

Liberator-V1000 Dual-port:

Internal photos & Final Assembly Detail



Figure 1: Antenna frame assembly showing Radome (Exterior view)



Figure 2: Antenna frame assembly showing antenna interface (Interior view)

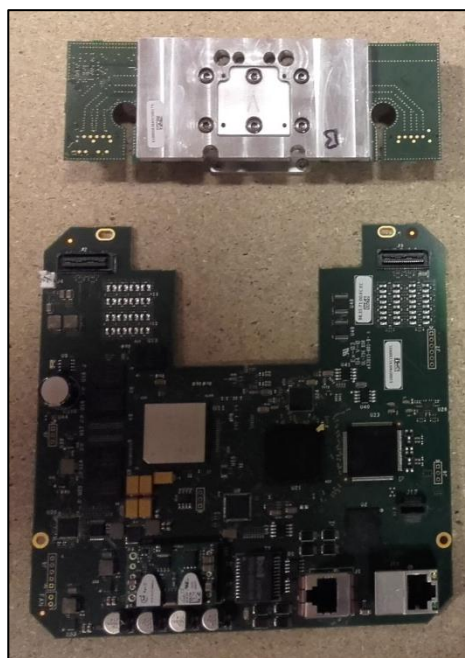


Figure 3: Antenna Frame Assembly, Modem Assembly and Microwave/Control Board/Diplexer Assembly



Figure 4: Assembled Unit less Rear Heatsink Plate



Figure 5: Microwave Unit Assembled with Control Board and Diplexer
(Component Side)



Figure 6: Microwave Unit Assembled with Control Board and Diplexer
(Heatsink Side)

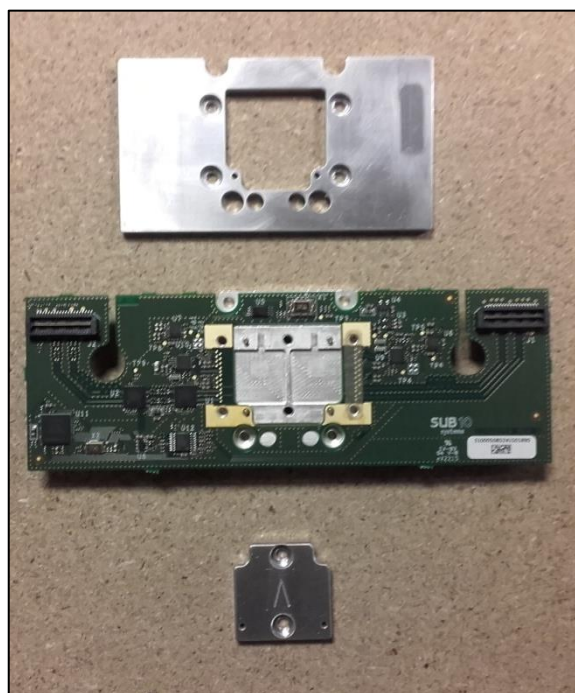


Figure 7: Assembly of Microwave Unit and
Control board

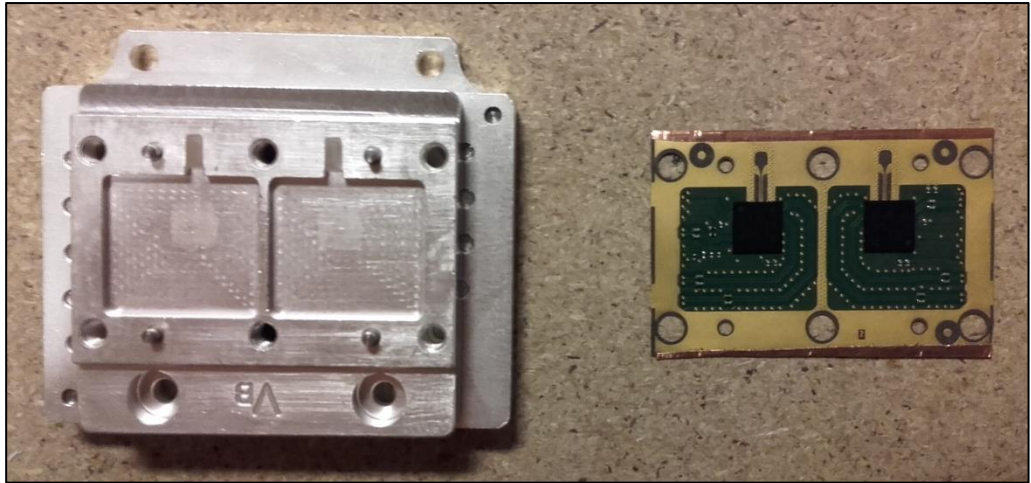


Figure 8: Microwave Unit
Components