



## FACTORY PLATE

Blank Label to use size approx 20 X 7.5mm: 3139 225 50894

To paste inside the battery compartment.

The diagram shows a product label with the following fields and callouts:

- KWR101830/01BU GGG**: Callout: GGG: S, PTR, TR, EO
- 3139 228 12211**: Callout: S=Sample
- MADE IN XXXXX**: Callout: PTR=Pre-Trial Run
- BS xx XXXXX x XXXXX**: Callout: TR= Trial-Run
- FCC ID: 2AADIKWR1018M0**: Callout: EO= Concession Order (same as Risk Order)
- Production YEAR and WEEK code only**: Callout: (To be filled by Production)
- COUNTRY ORIGIN**: Callout: (To be filled by production)
- Product 12NC**: Callout: (To be indicated)
- Product Model no.**: Callout: (To be indicated)

A red triangle callout points to the FCC ID field with the text: **.1**, **6JUN2013**, and **Change of FCC ID**.

1.

Change of FCC ID

Align the factory label to the edge of the battery compartment

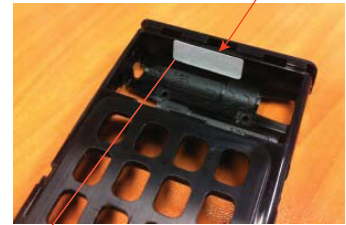


PHOTO LABEL

KWR101830/01BS

- Product Type no.  
(to be provided by Project)

3139 228 12221

Product 12NC  
(to be provided by Project)

MADE IN XXXXXXXXXX.

— COUNTRY ORIGIN  
(To be filled by production)

QTY :60 PCS

— Carton Quantity  
(To be provided by Project)

XX : XXXXX



—Production Code  
(To be filled by Production)

LOT NO.: XXX/XXX

CTN : XXX/XXX

— Carton Number  
(To be filled by Production)

Lot Number  
(To be filled by production)

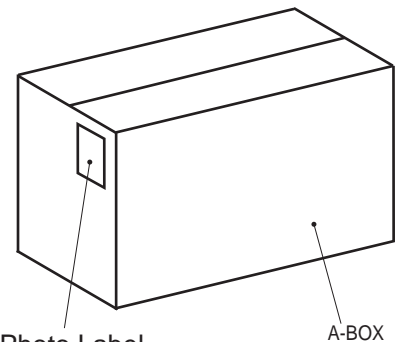


Photo Label

A-BOX

		MW		A4A																			
				KWR101830/01BS								3139 228 1222		1		06/06/2013 VN							
2013-01-31		vn																					
NAME NAAM		Vincent Neo						SUPERS. VERY		END		SH. B.		10		SH. B.		166-01				A4	