

APPENDIX: FCC §15.247 (i) - MAXIMUM PERMISSIBLE EXPOSURE (MPE)

EUT Description: Smart Bear Kid's PAD
Model No.: IP013A
FCC ID: 2AAD9IP013A

1. Applicable Standard

According to §1.1307(b)(5), systems operating under the provisions of this section shall be operated in a manner that ensure that the public is not exposed to radio frequency energy level in excess of the Commission's guideline. This is a Portable device. KDB 447498 D01 General RF Exposure Guidance v05 was used as the guidance.

According to §1.1307 and §2.1093 RF exposure is calculated.

2. RF Exposure Calculation Result:

802.11b/g/n:

Frequency: 2412-2462 MHz

Modulation: DSSS (CCK, OFDM, DBPSK, DQPSK)

Mid-Channel: 2.437 GHz (channel 06)

Antenna Gain: G = 3 dBi

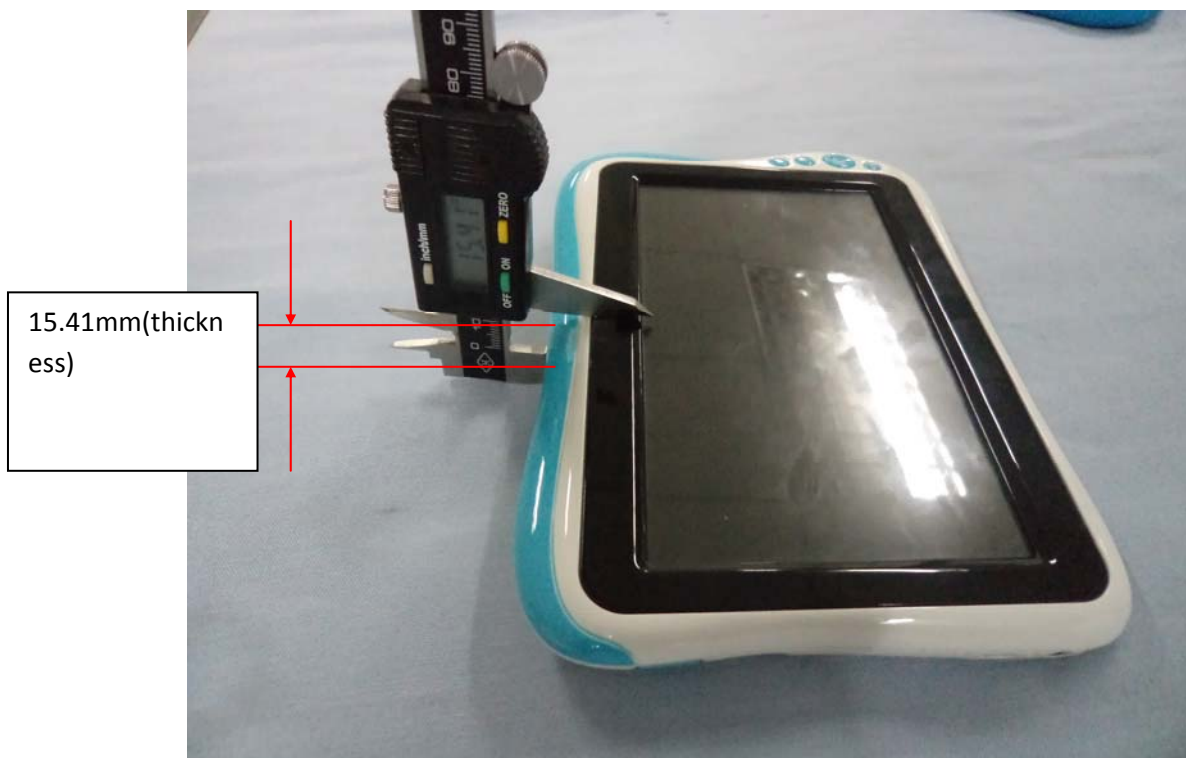
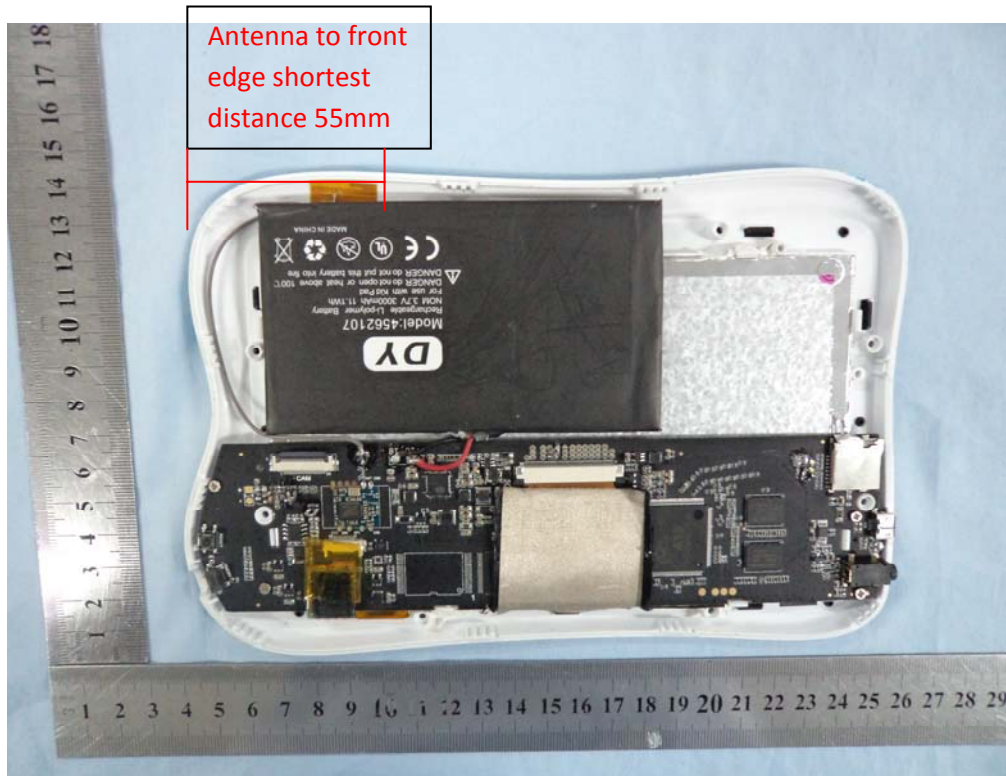
According to the requirement of KDB 447498 D01 General RF Exposure Guidance v05 Appendix A SAR Test Exclusion Thresholds for 100 MHz – 6 GHz and ≤ 50 mm.

The Max Peak Power measured and achieved in 11b mode is: 9.7dBm = 9.33mW < 10 mW (Thresholds) and the exact distance from (the closest part of) the internal antenna to the outside surface of the tablet is greater than 5mm.

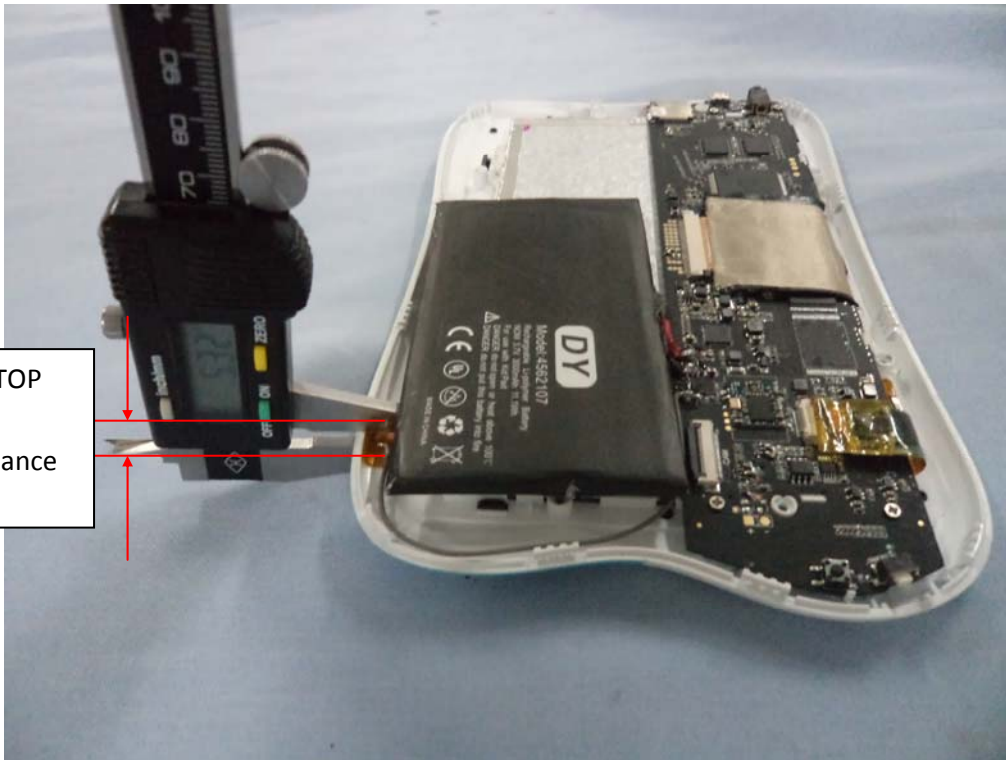
The SAR measurement is not necessary.

Supplementary Remarks Photos

Size of the Tablet: 200mm(Length) * 135mm(Width)* 15.41mm(thickness)



Antenna to TOP
edge exact
shortest distance
5.32mm



So Antenna to bottom edge exact shortest distance $15.41 - 5.32 \text{ mm} = 10.09 \text{ mm}$