

Quick Guide



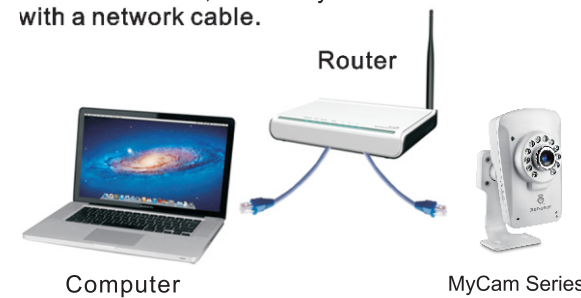
Important
Please read this manual
carefully before installation.

Start Here

Ready, set up, go!

Connect the camera to the network

First time to use, connect your camera to router with a network cable.



Install Camera Softwares

Insert the CD, and click “**Auto Run**”, you’ll see:
Then install “**Camera Setup**”, “**Camera Live**” and “**Multi-Live**”.



Camera Setup



Multi-Live

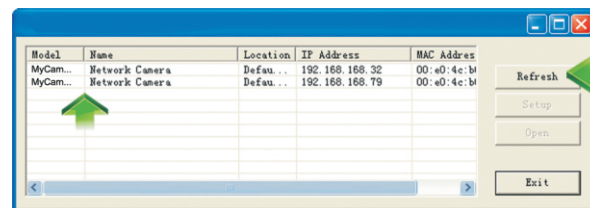


Camera Live

First time to view in the browser, Windows will ask whether to install an “**Active X**”. It’s perfectly safe. Click Allow to install.

View on PC

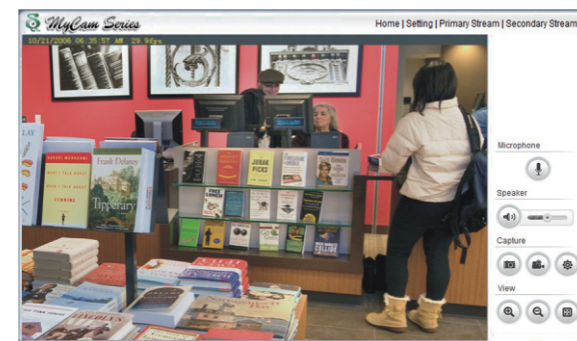
Double click  then appears:



The router automatically gives your camera an IP address. If not, click “**refresh**” till it shows up. Double Click the IP address to run the camera. You’ll see:

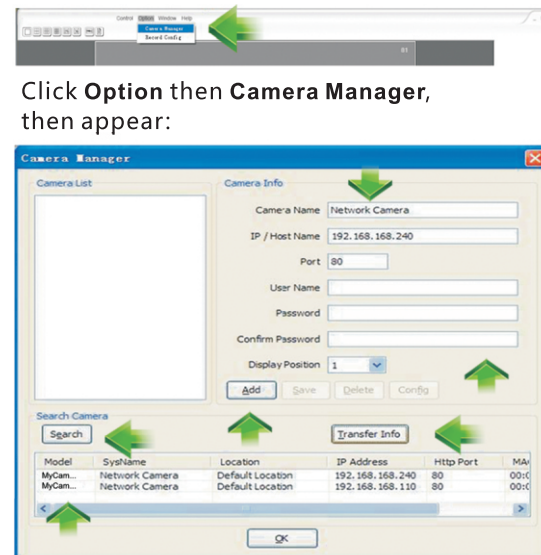


Click “**Multi Live**”, in the verification box:
User Name: **admin**
Password: **admin**
Click “**OK**” and enjoy yourselves!

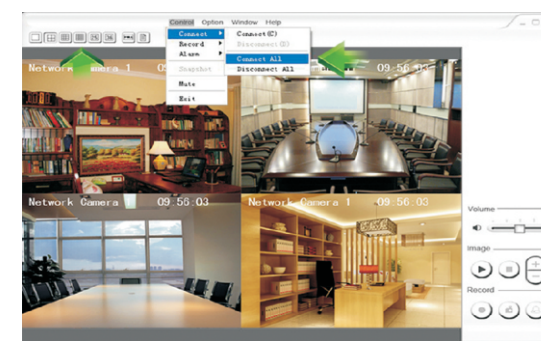


Multi-Live

Double click  then appears:

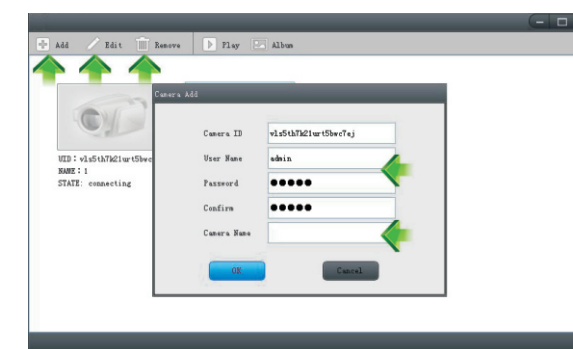


“**Search**”, Choose camera “**Transfer Info**”
User Name: **admin** Password: **admin**
Change Camera name, Then “**Add**”, “**OK**”
Then “**Control**”, “**Connect**”, “**Connect All**”
you’ll see:

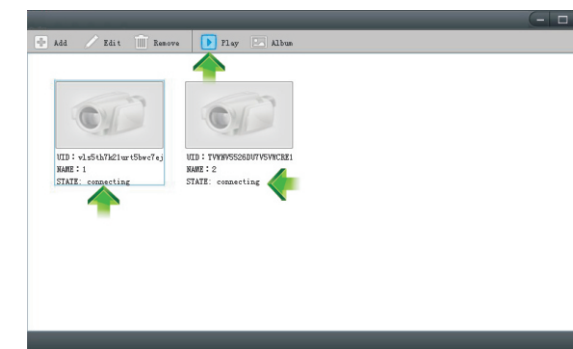


View on PC

Double click  then appears:




Click “**Add**” to add camera: Input **camera ID**, **User Name** and **Camera name**. Then it’s done. Click “**Edit**” to change the already input information.



See whether the state is “**On line**”. If not, wait a few Seconds till it’s on line.. Then **choose camera** and click “**Play**”, you’ll see the video.



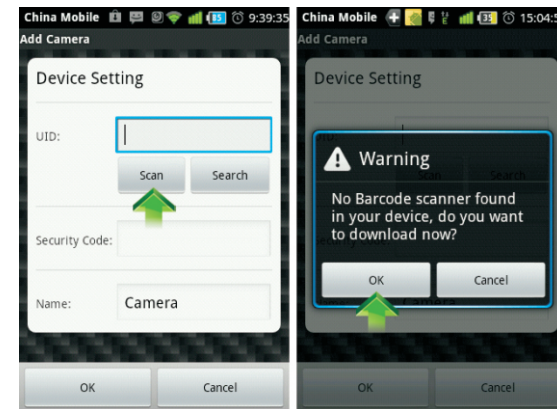
 Video Pause  show transmission info

 Snapshot, save really fast behind the screen

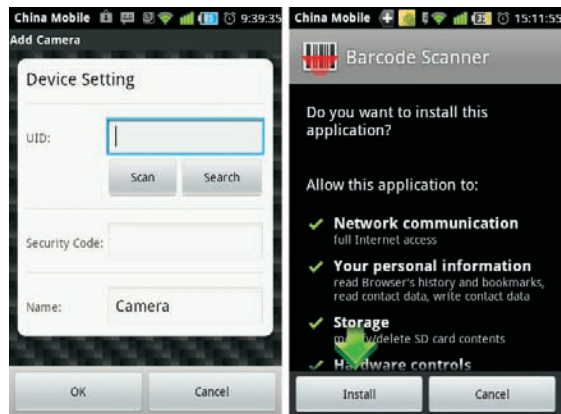
 Hearing the voice  Back to main manu

Install the scanner for iPhone, iPad and Android

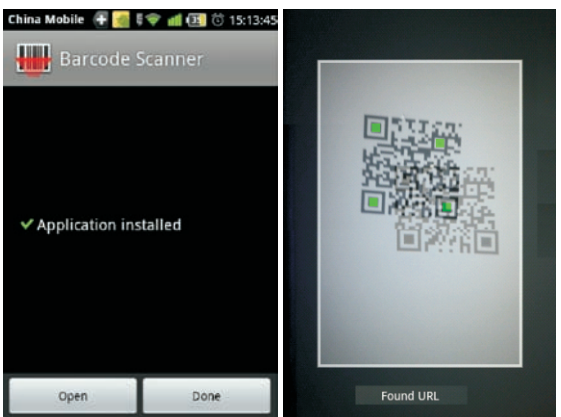
First time to use scan function. Press “**Scan**”.



Press “**OK**” to download the Barcode Scanner.



It's downloading behind the screen. It's 507 KB. Please wait 2-30 seconds. Depends on the WiFi Speed. When finishing downloading, it automatically shows up the installation screen. Press " **Install** ".



Then press " **Open** " or " **Done** " to finish installation. Now enjoy scanning the dimensional barcode.

View on Android

Install software " **DOD IP CAMERA** " 
Open it, you'll see:



Type the **UID** or **Scan** the **UID**. Input **password**, and **name**. Then click " **Save** ".




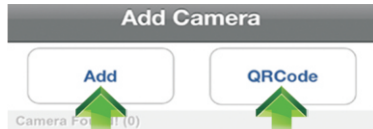
 For snapshots

 Back

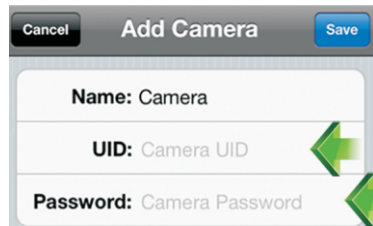
 For hearing the voice

View on iPhone, iPad

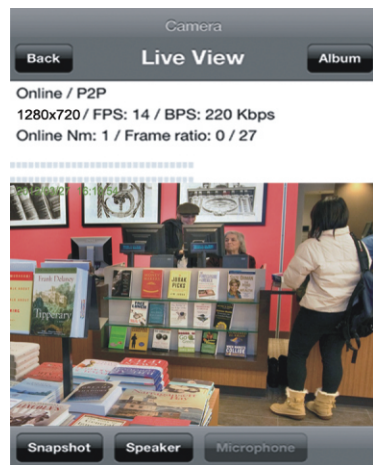
Install software " **DOD IP CAMERA** " 
Open it, you'll see:



Click " **QRCode** " to scan **UID**.
Click " **Add** " to manually input **UID**.



Input " **UID** " and " **Password** ".
Then you'll see:



" **Snapshot** " for getting pictures.
" **Speaker** " for hearing the voice.

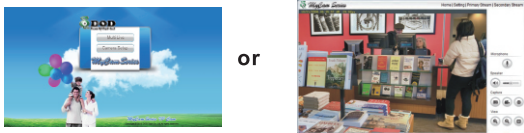
Wireless Setup

1. WPS

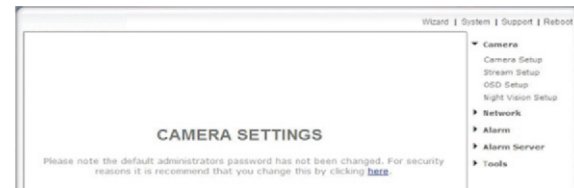
Press the camera WPS button, then press router's WPS button. When the camera's blue light (above the WPS button) is continuously on for 10 seconds then off. It's done.

2. Manual WiFi Setup

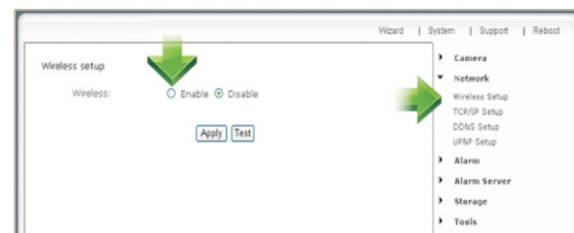
Click on " **Setting** ".



Then appear:



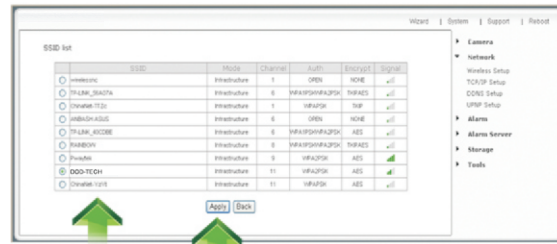
Click " **Network** ", then " **Wireless Setup** ".



Click " **Enable** ", then appear:



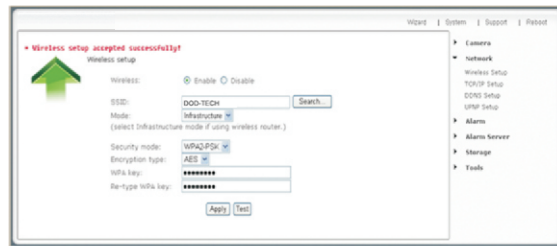
Click " **Search** " to find your WiFi.



Choose **your** router **SSID**(WiFi), Click " **Apply** ", then appear " **Wireless Network selected!** ".



Then input your router WPA (**WiFi Password**) and click " **Apply** ". You'll see: " **Wireless Setup Accepted Successfully!** "



Finished!

Now you can unplug the network cable!

Frequently asked questions

- Q: How many users can view the same camera at the same time?
A: 16
- Q: How many cameras can we view in one window?
A: 36
- Q: How many cameras can we view in the browser?
A: Countless. Depends on the network speed.
- Q: When the camera is viewing in the browser, can we use the same PC and view the same camera in another browser window?
A: No, the camera knows it's already open.
- Q: Can we use " **Camera Setup** " and " **Multi-Live** " at the same time in the same computer?
A: Only one of them will work alright, depends on who grabs the IP first.
- Q: Can we add DDNS in the Multi-Live to view videos in one software window and how many would it support?
A: Yes. Of course. Up to 36.
- Q: Using DOD IP Camera, why I only see black screen in my iPhone, iPad, Android?
A: The video size is too big. The network speed is too slow. Get to the setting, choose low quality, then you'll see fluent videos. (Details see the manual in CD)
- For more FAQ see the manual in CD.

FCC WARNING

This device complies with Part 15 of the FCC Rules. Operation is subject to the following two conditions:

- (1) This device may not cause harmful interference, and
- (2) this device must accept any interference received, including interference that may cause undesired operation.

NOTE 1: This equipment has been tested and found to comply with the limits for a Class B digital device, pursuant to part 15 of the FCC Rules. These limits are designed to provide reasonable protection against harmful interference in a residential installation. This equipment generates, uses and can radiate radio frequency energy and, if not installed and used in accordance with the instructions, may cause harmful interference to radio communications. However, there is no guarantee that interference will not occur in a particular installation. If this equipment does cause harmful interference to radio or television reception, which can be determined by turning the equipment off and on, the user is encouraged to try to correct the interference by one or more of the following measures:

- Reorient or relocate the receiving antenna.
- Increase the separation between the equipment and receiver.
- Connect the equipment into an outlet on a circuit different from that to which the receiver is connected.
- Consult the dealer or an experienced radio/TV technician for help.

NOTE 2: Any changes or modifications to this unit not expressly approved by the party responsible for compliance could void the user's authority to operate the equipment.

This device must be installed to provide a separation distance of at least 20 cm from all persons and must not be collocated or operating in conjunction with any other antenna or transmitter.