

## **Annex B. EUT AND TEST SETUP PHOTOGRAPHS**

### **Annex B.i. Photograph 1: EUT External Photo**



Whole Package - Top View



EUT - Front View



EUT - Rear View



EUT - Top View



EUT - Bottom View





EUT - Left View



EUT - Right View

## Annex B.ii. Photograph 2: EUT Internal Photo



Cover Off - Top View

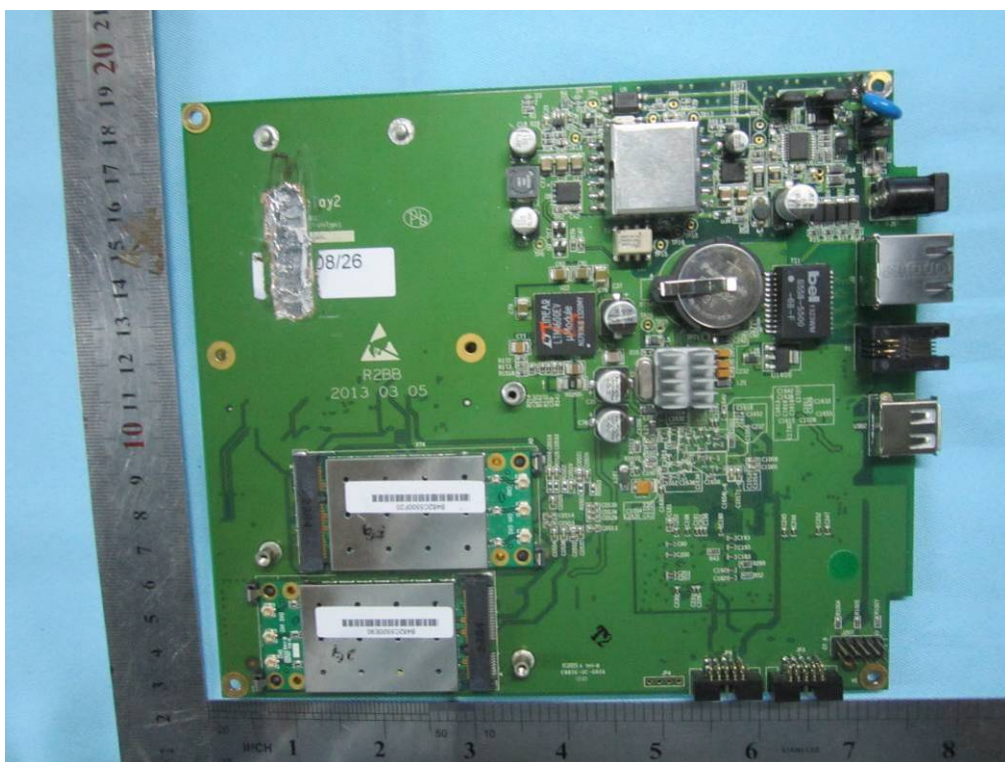


Adapter-front view

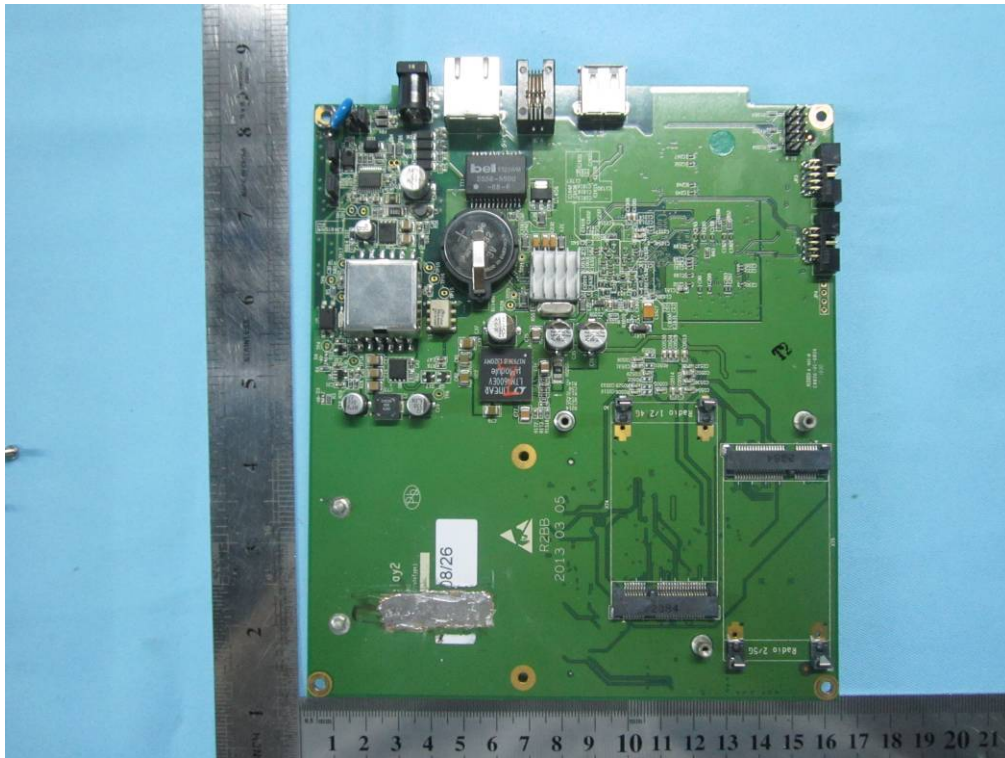




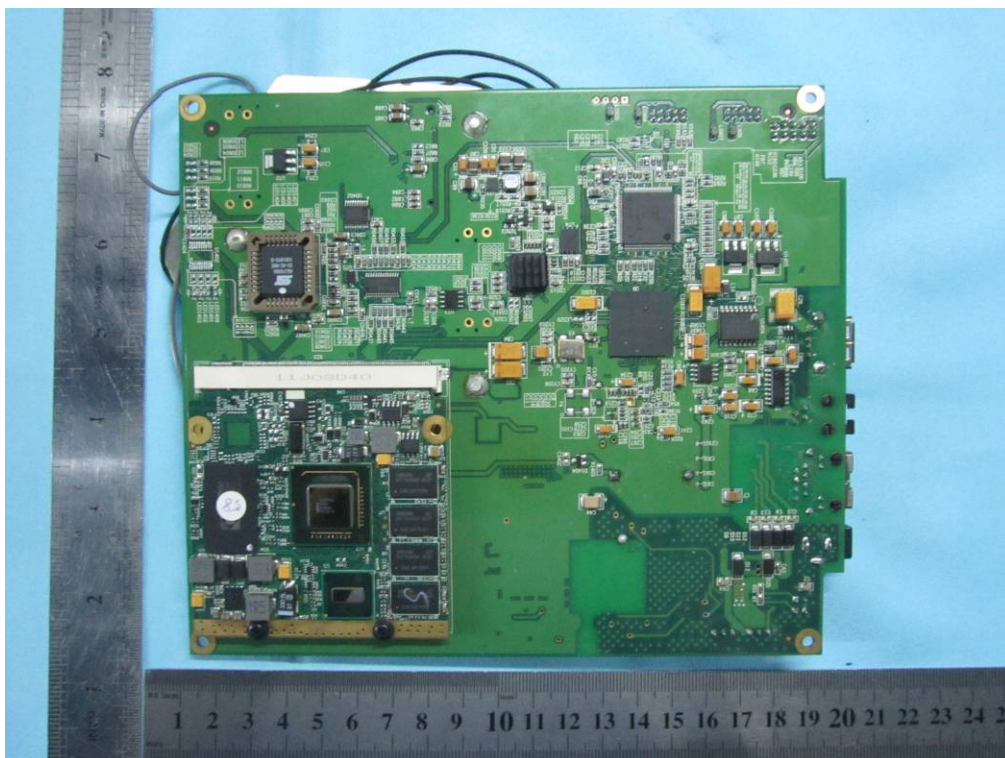
Mainborad - Top View



Mainborad Uncover - Top View-1

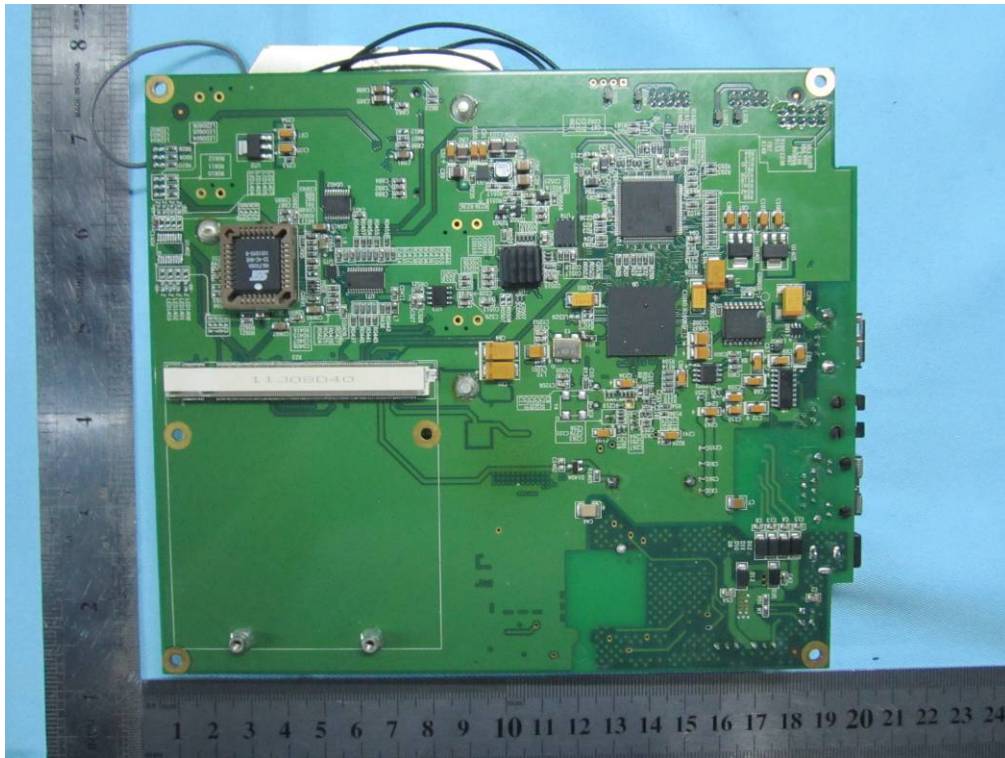


Mainborad Uncover - Top View-2

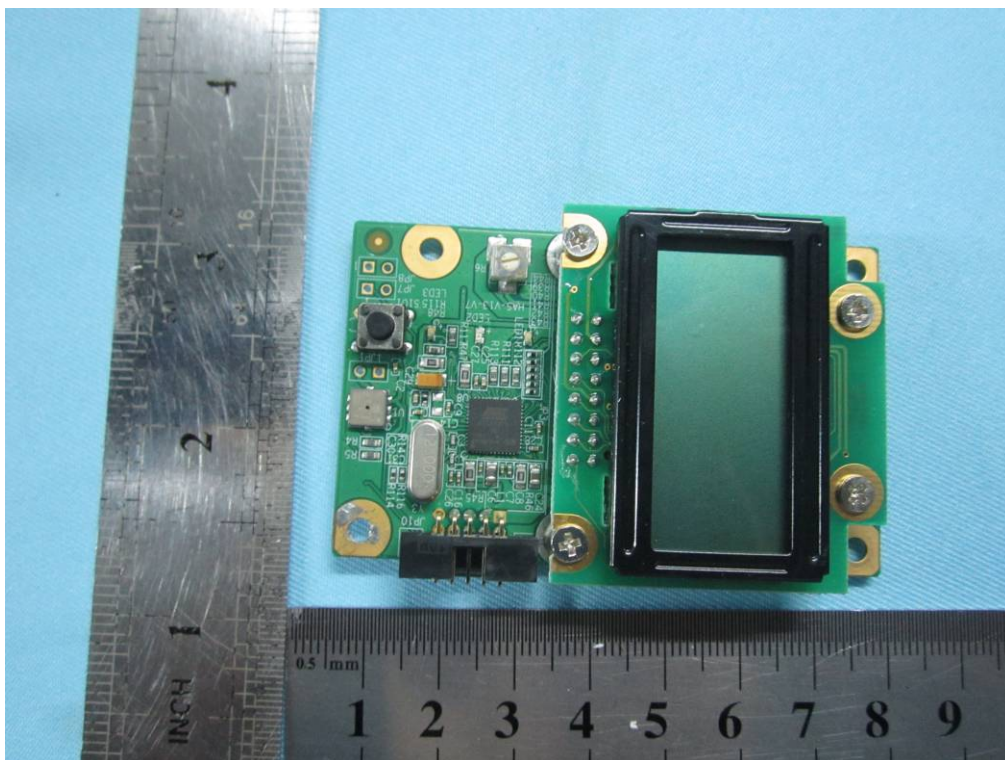


Mainborad - Bottom View



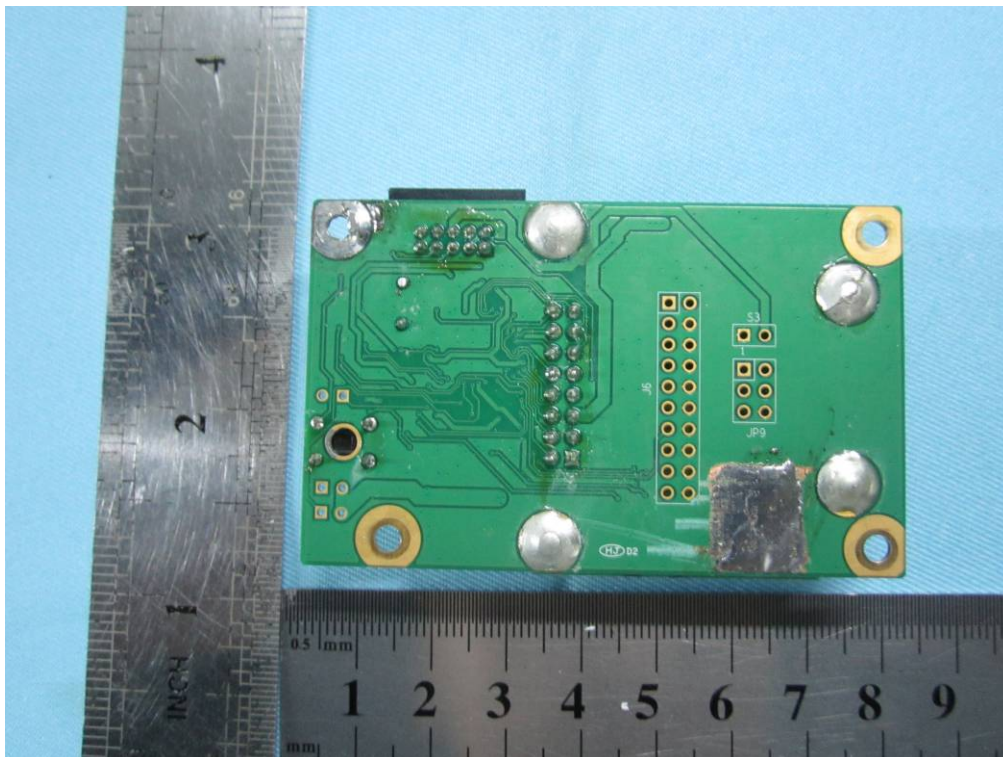


Mainboard Uncover - Bottom View



LED board - Top View



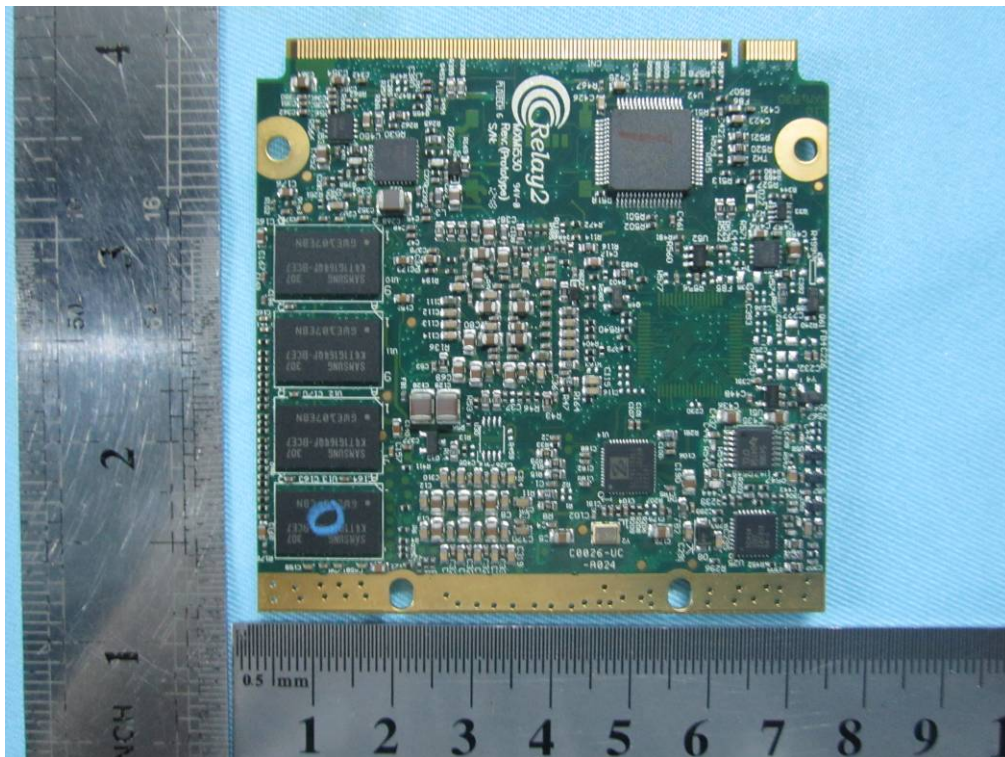


LED board - Bottom View



Control board - Top View



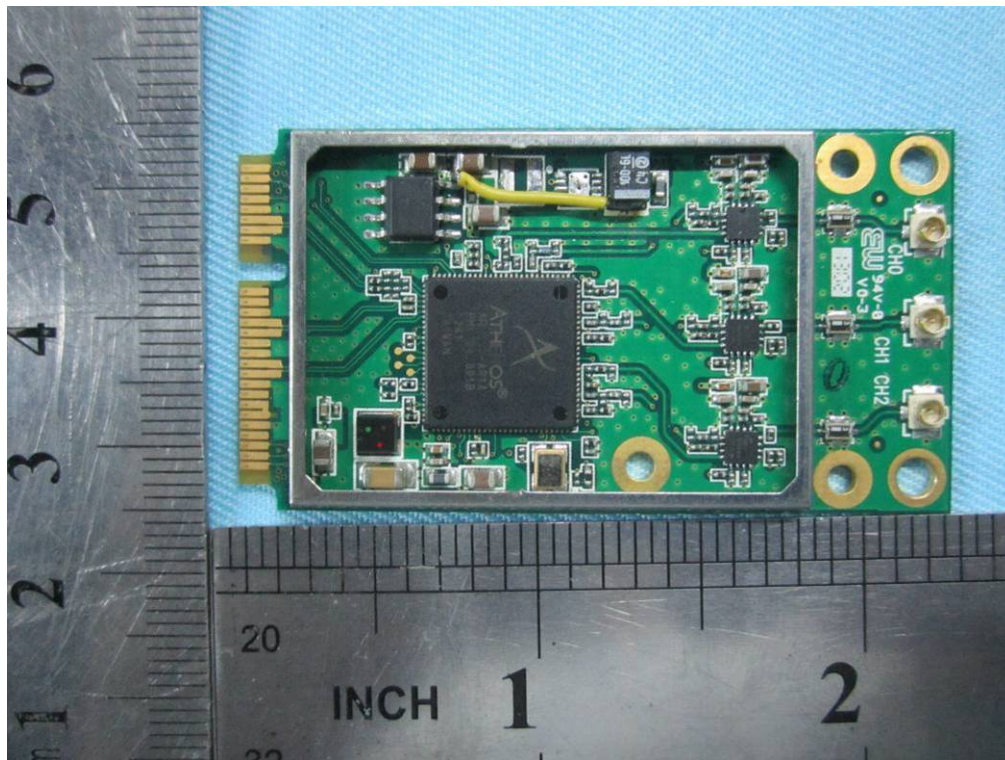


Control board – Bottom View

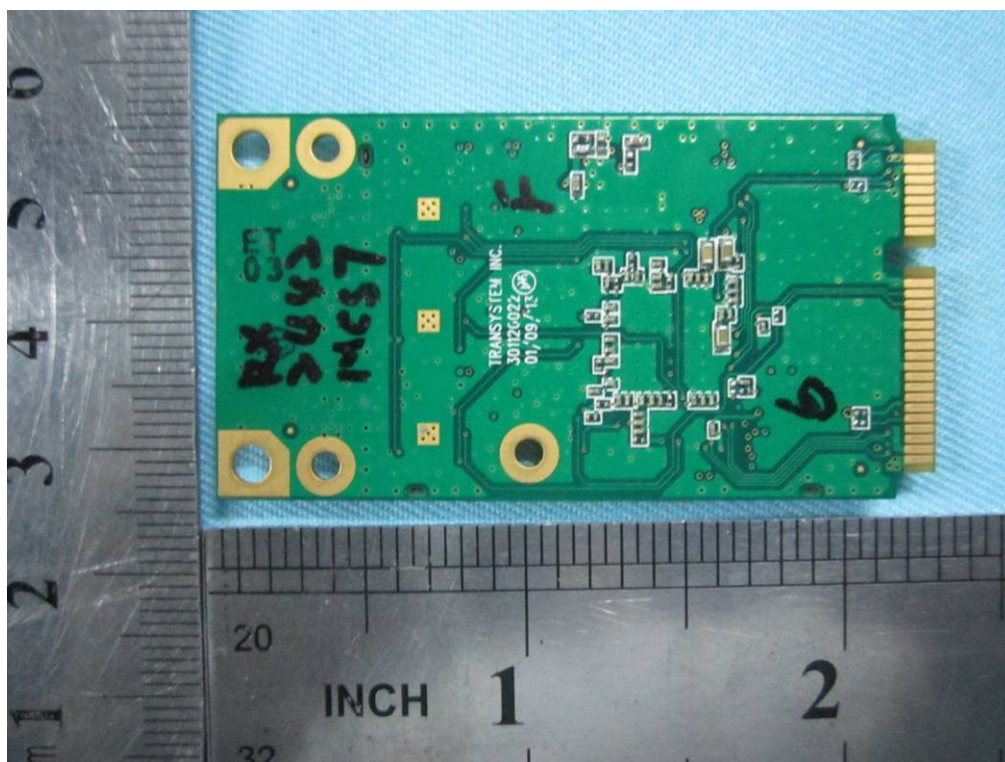


2.4GHz RF board - Top View





2.4GHz RF board Uncover - Top View

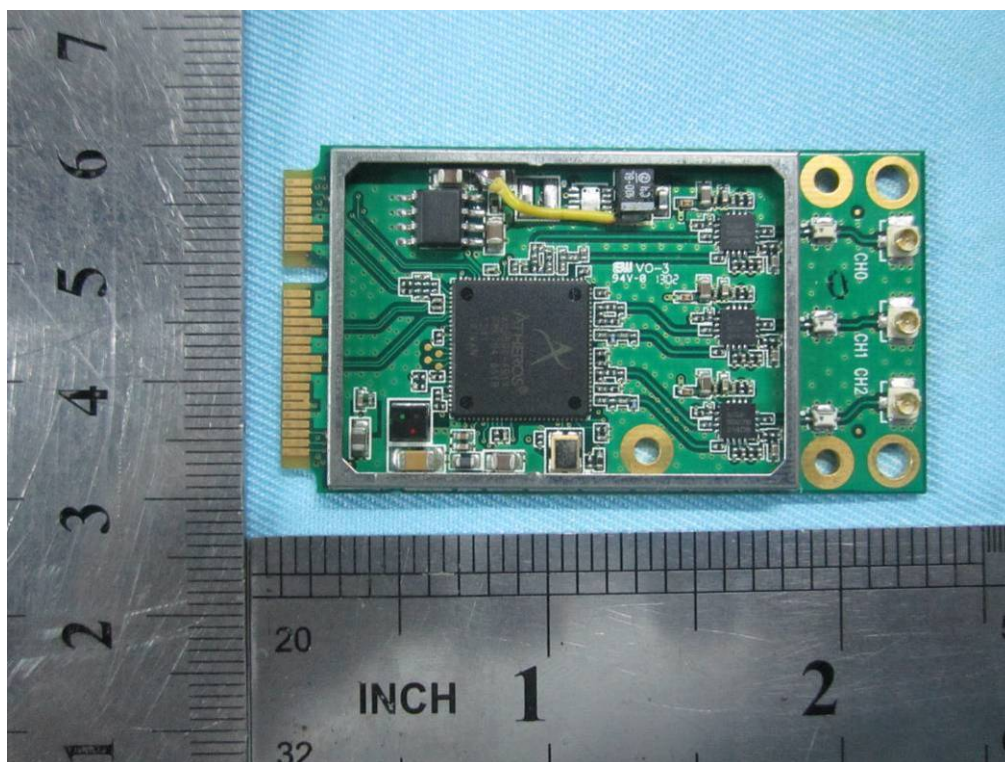


2.4GHz RF board – Bottom View



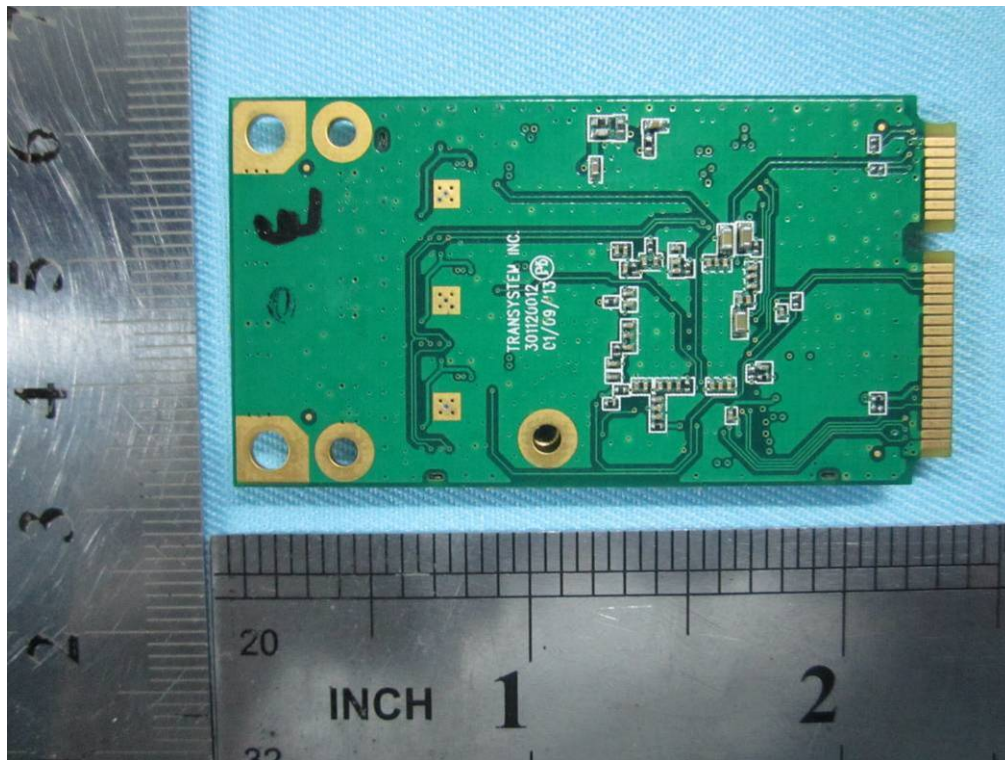


5GHz RF board - Top View

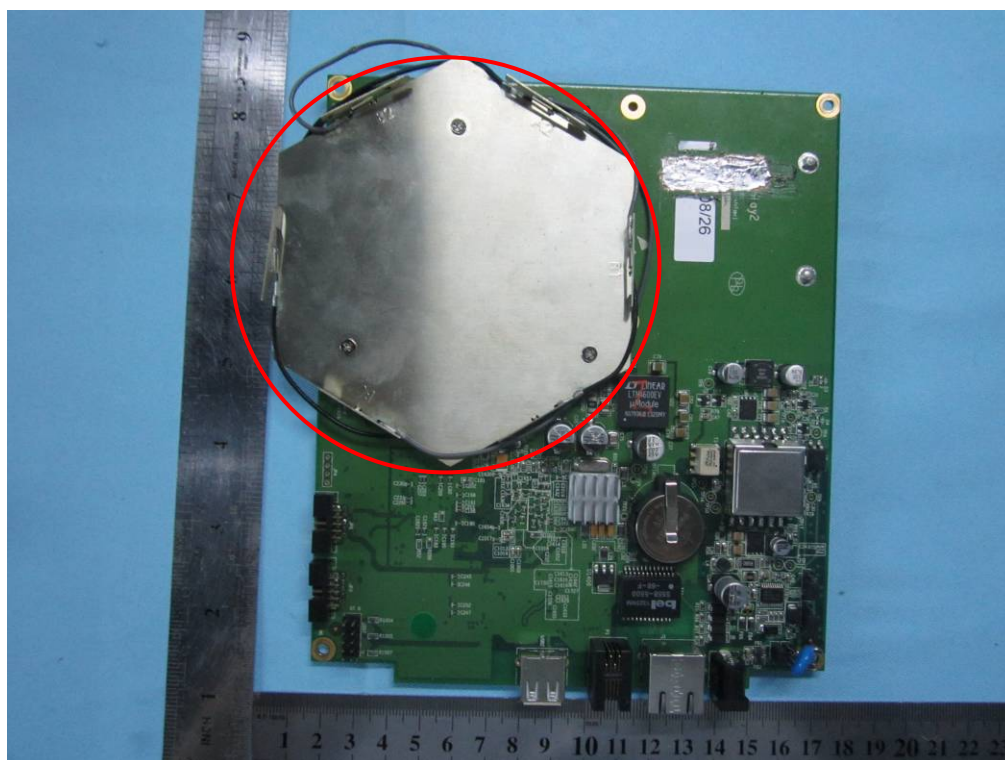


5GHz RF board Uncover - Top View





5GHz RF board – Bottom View

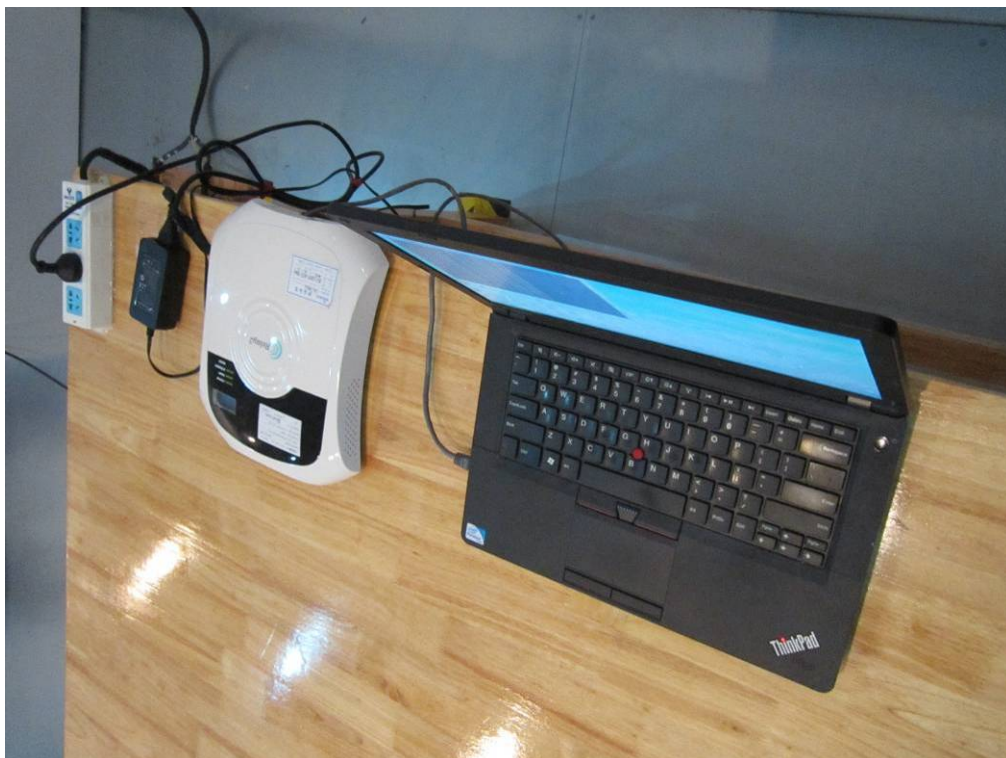


WIFI Antenna View

**Annex B.iii. Photograph 3: Test Setup Photo**

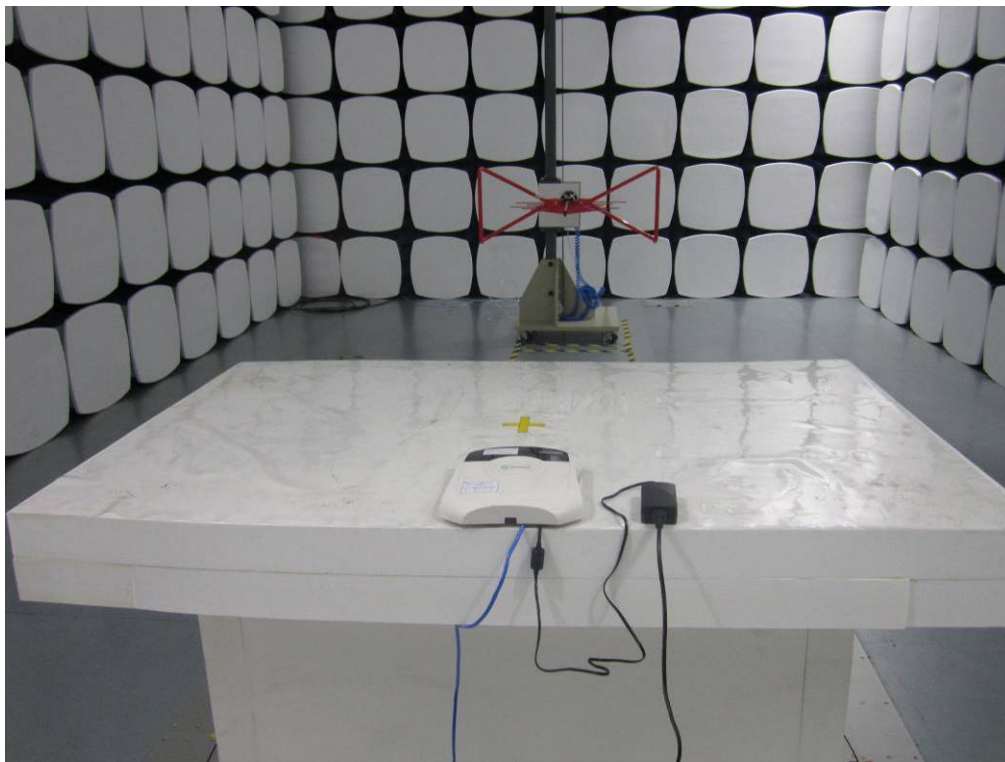


Conducted Emissions Test Setup Front View

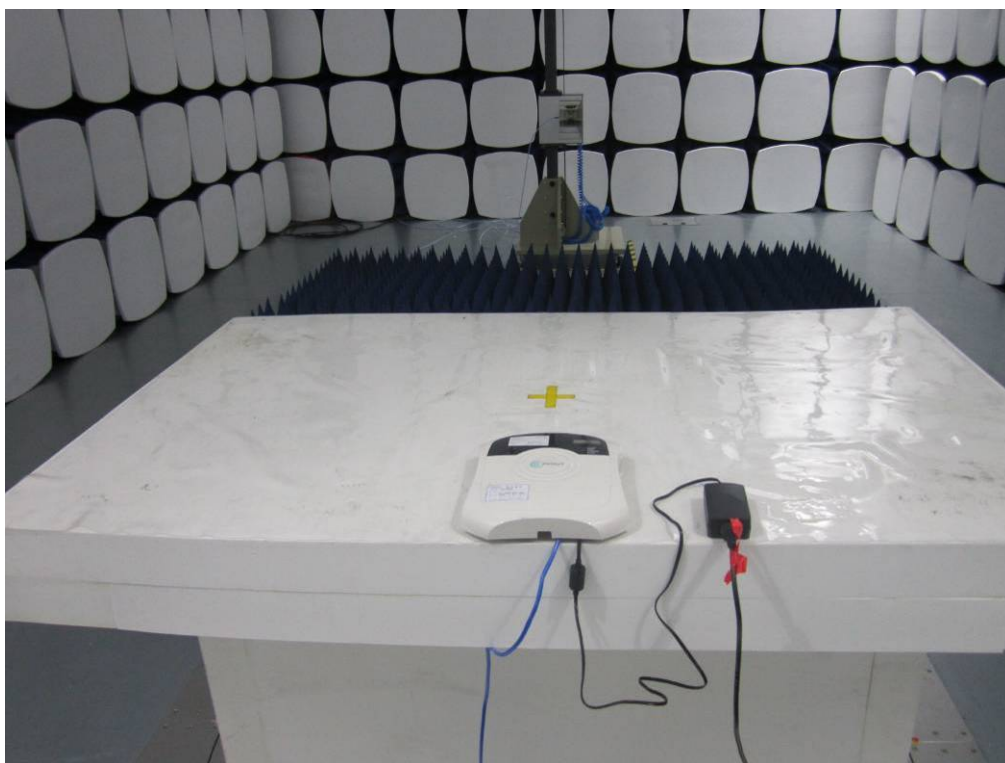


Conducted Emissions Test Setup Side View





Radiated Spurious Emissions Test Setup Below 1GHz - Front View



Radiated Spurious Emissions Test Setup Above 1GHz –Front View

## **Annex C. TEST SETUP AND SUPPORTING EQUIPMENT**

### **EUT TEST CONDITIONS**

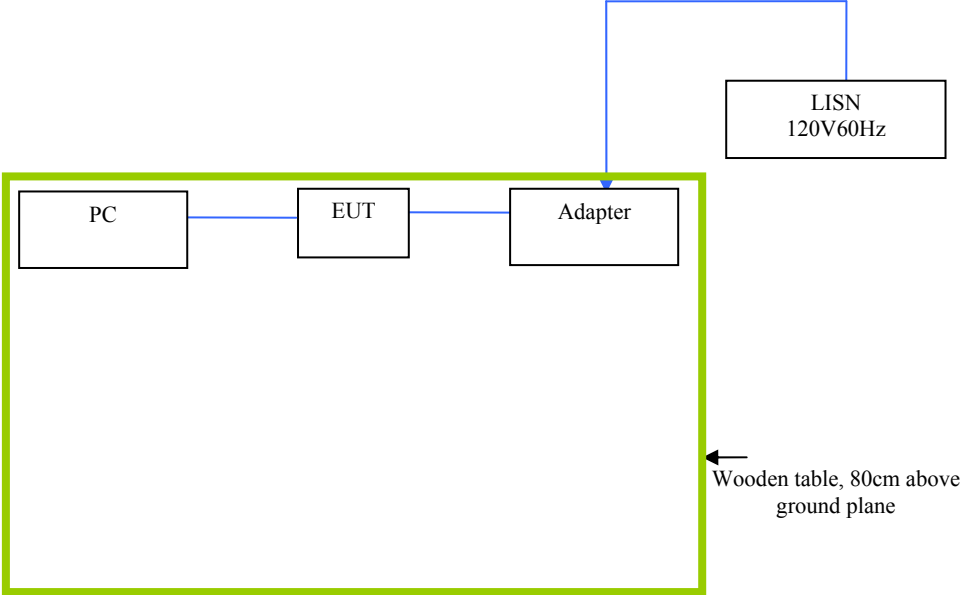
#### **Annex C. i. SUPPORTING EQUIPMENT DESCRIPTION**

The following is a description of supporting equipment and details of cables used with the EUT.

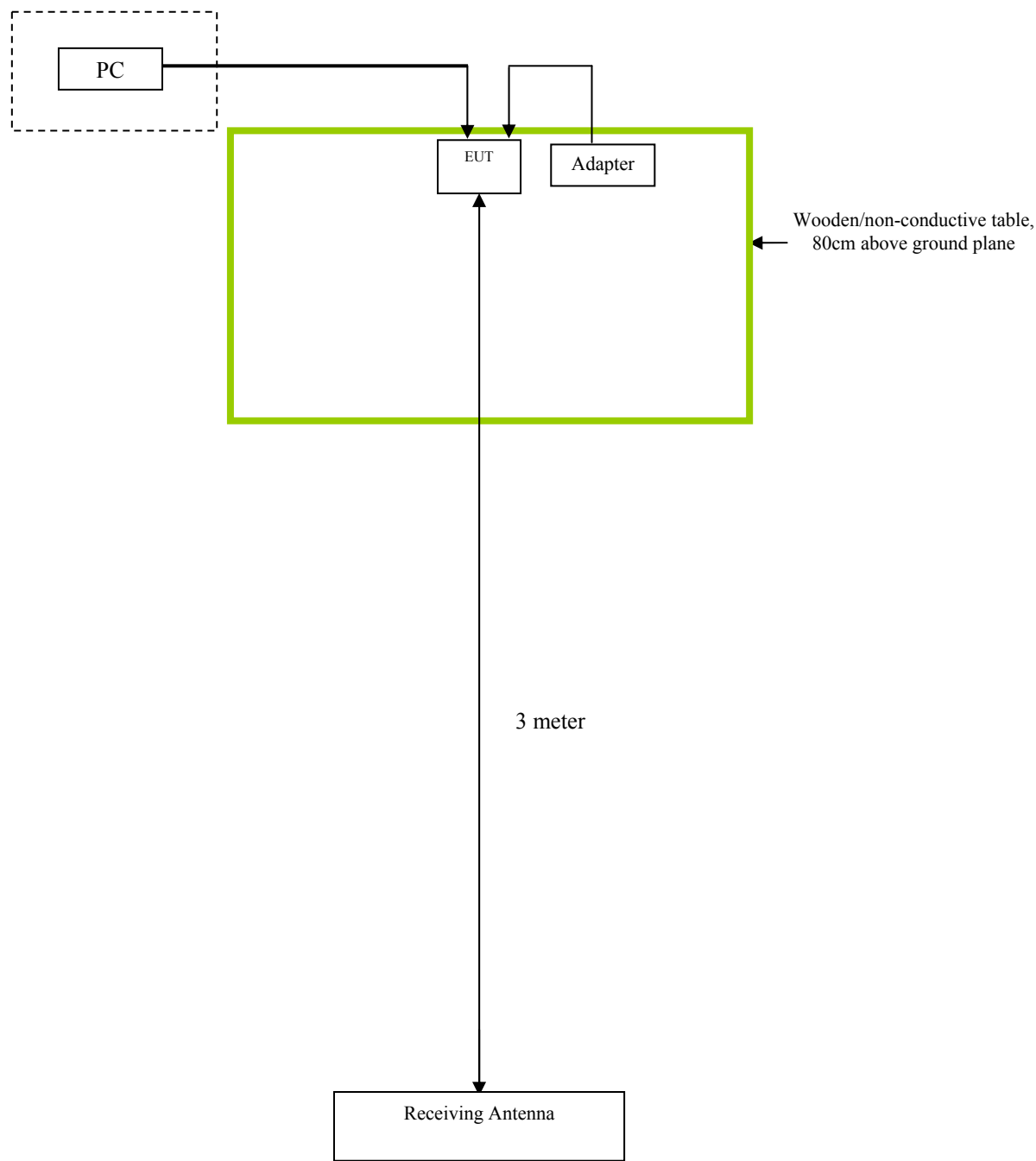
Manufacturer	Equipment Description (Including Brand Name)	Model	Calibration Date	Calibration Due Date
Lenovo Laptop	E40& 0579A52	N/A	Lenovo Laptop	E40& 0579A52



**Block Configuration Diagram for AC Line Conducted Emissions**



Block Configuration Diagram for Radiated Emissions





## **Annex C.ii. EUT OPERATING CONDITIONS**

The following is the description of how the EUT is exercised during testing.

Test	Description Of Operation
Emissions Testing	The EUT was continuously transmitting to stimulate the worst case.

## **Annex D. USER MANUAL / BLOCK DIAGRAM / SCHEMATICS / PART LIST**

**Please see attachment**



## **Annex E. DECLARATION OF SIMILARITY**

N/A