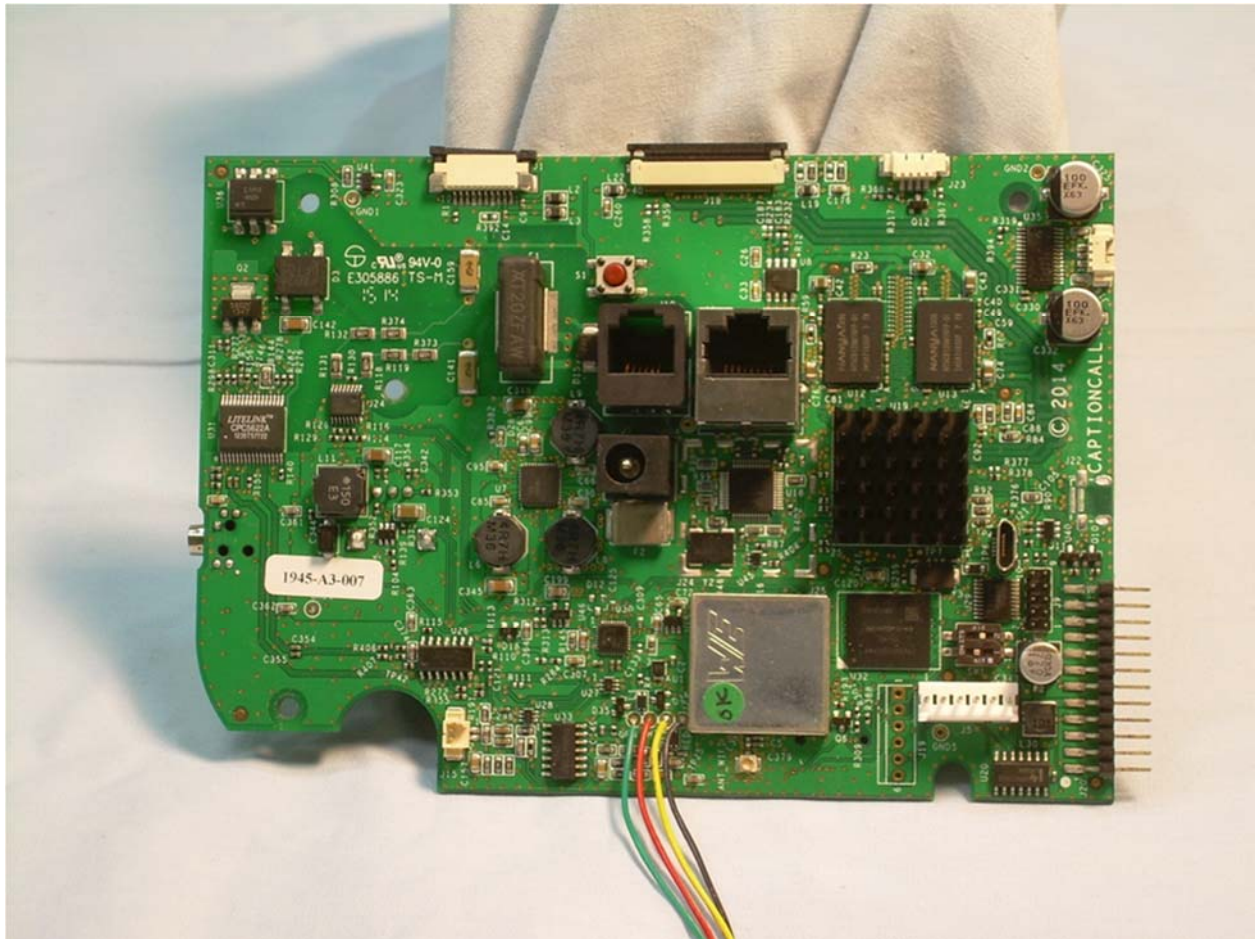


Internal Photographs

View with Back Cover Removed



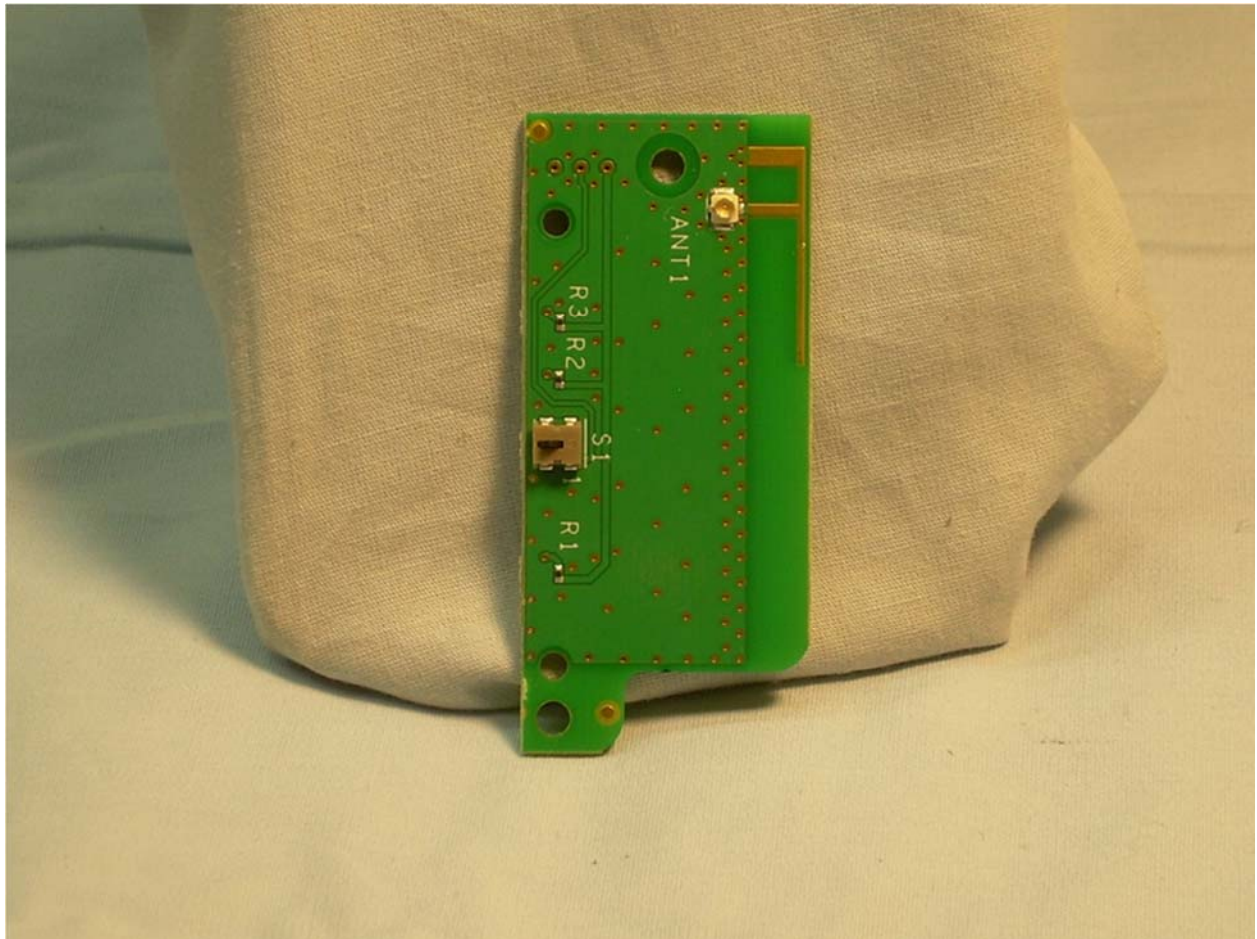
View of Back Side of Main PCB



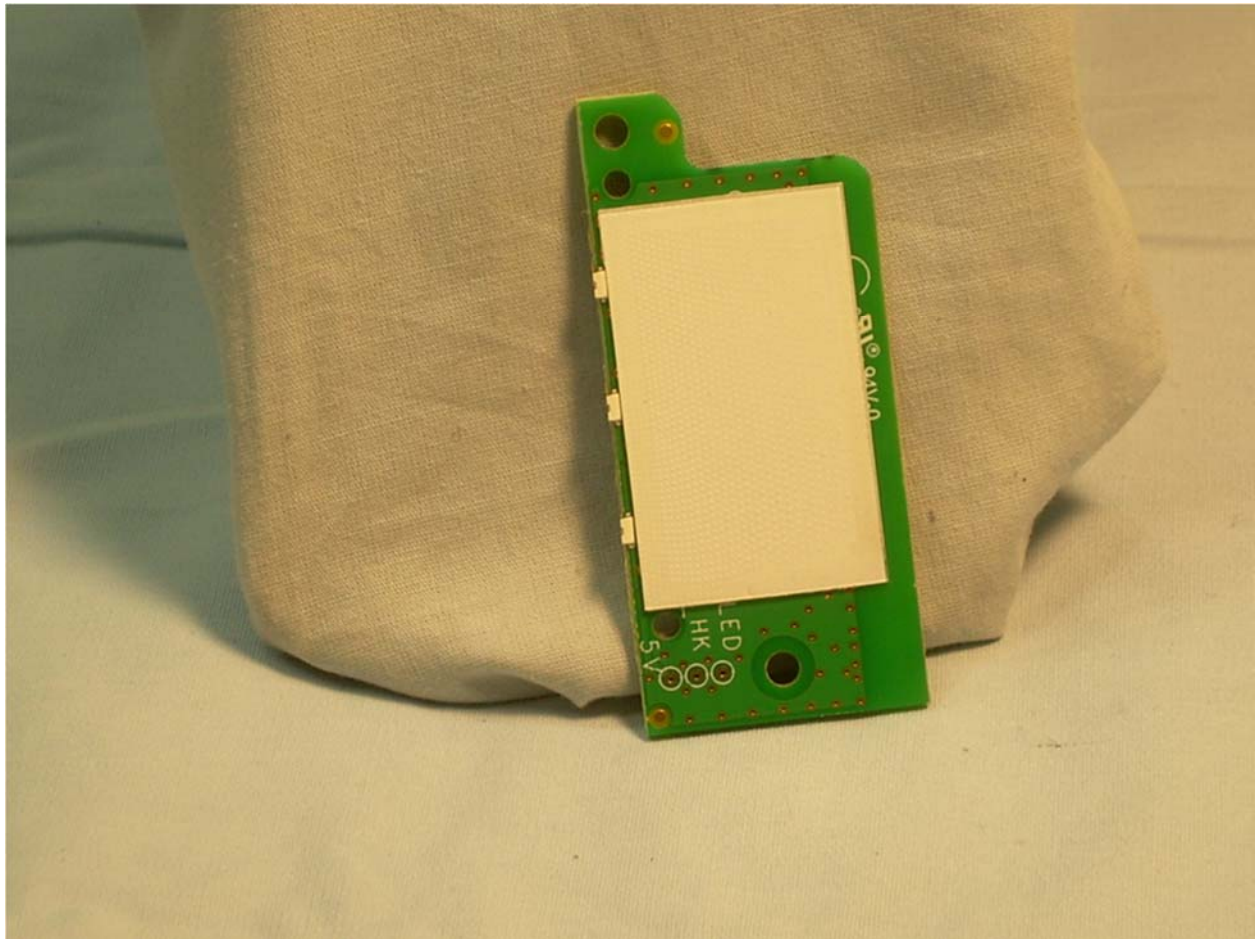
View of Front Side of Main PCB



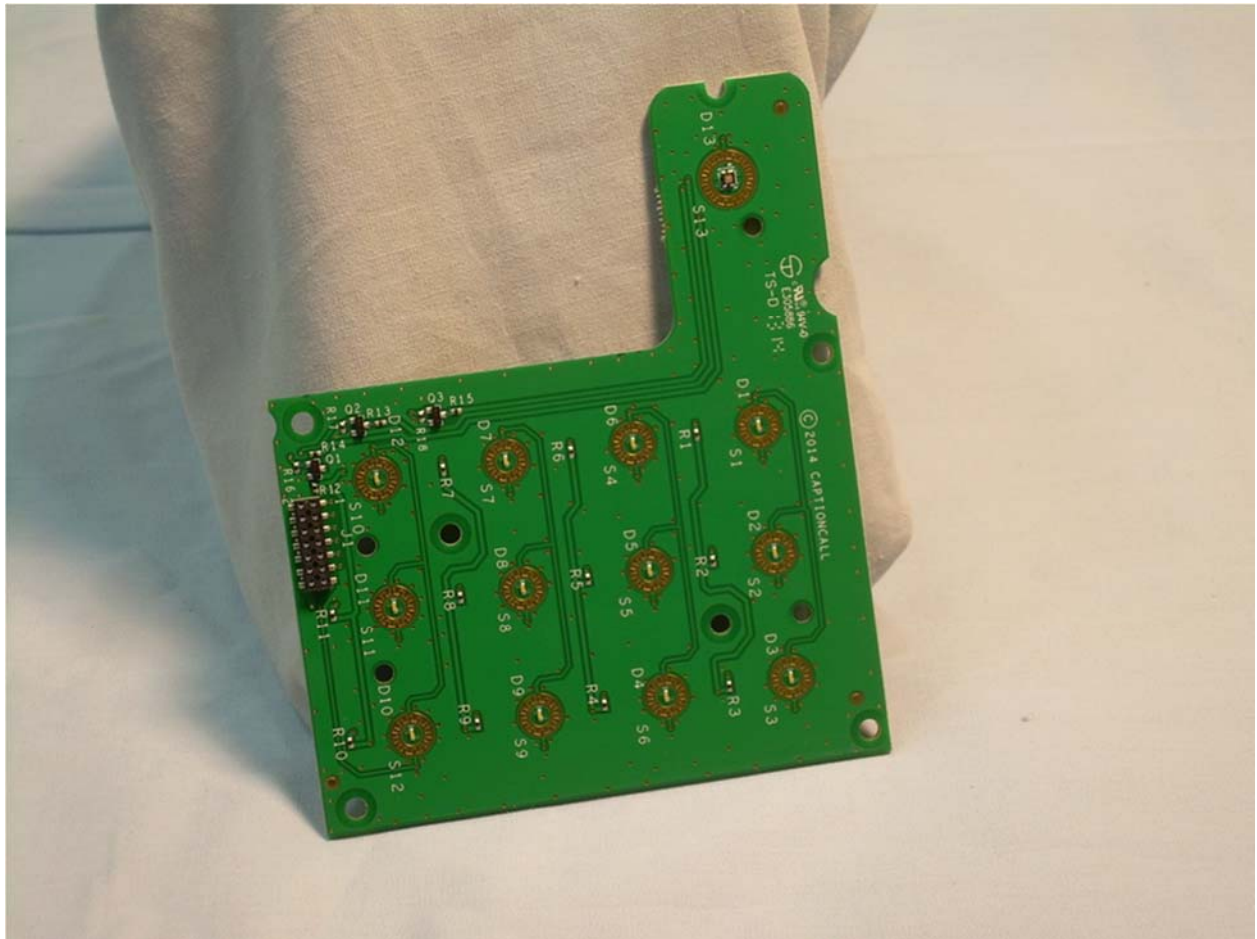
View of Back Side of Antenna PCB



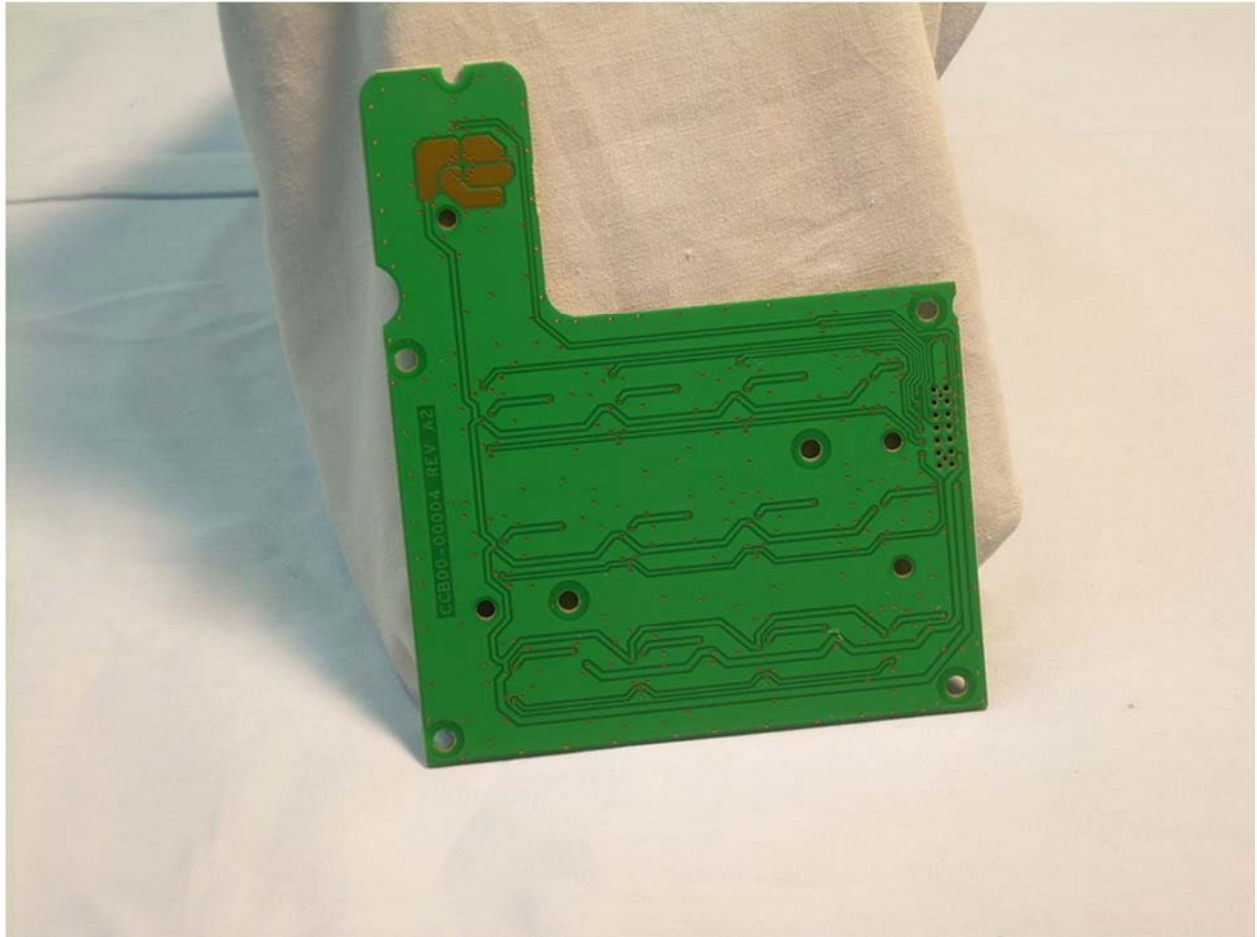
View of Front Side of Antenna PCB



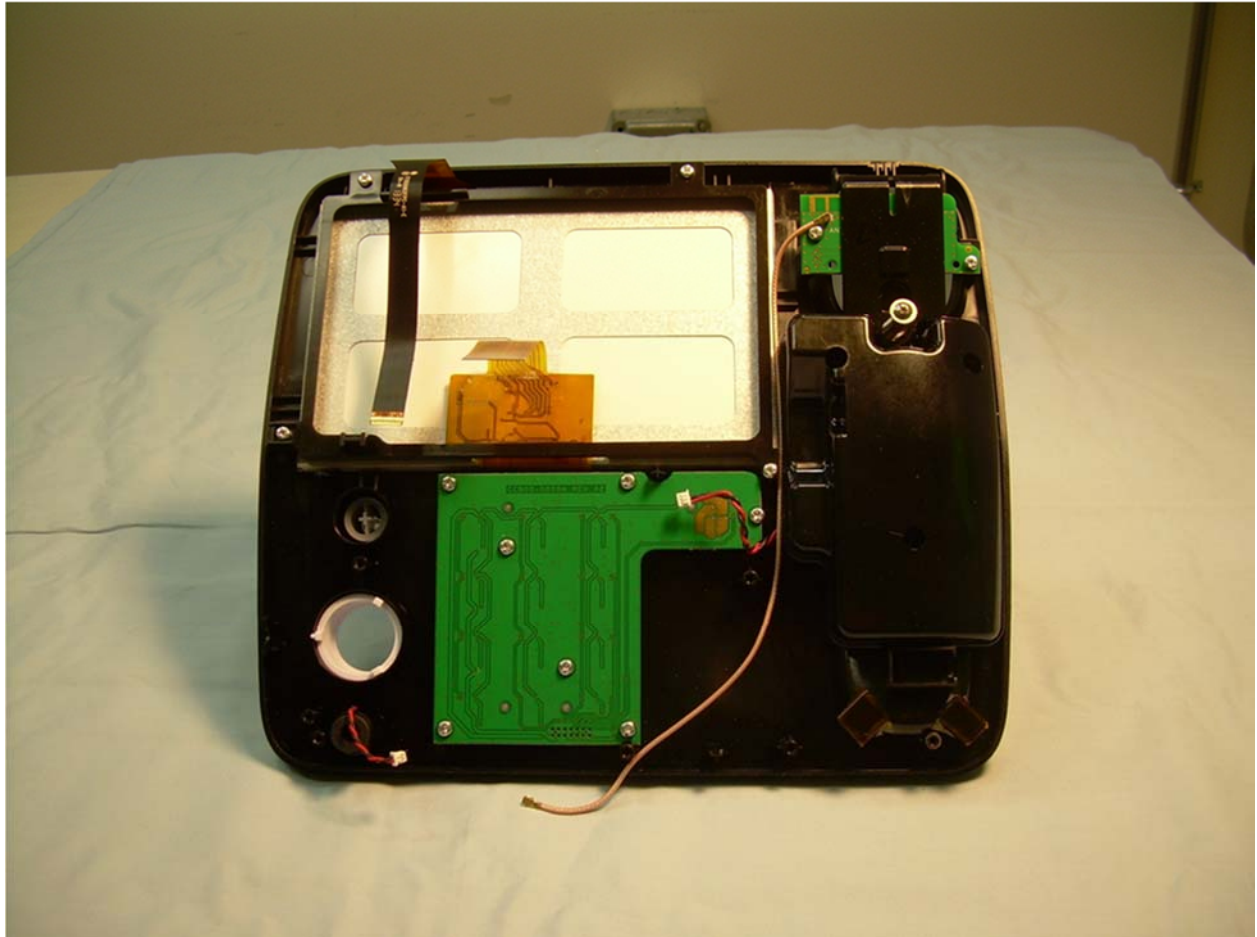
View of Front Side of Button Interface PCB



View of Back Side of Button Interface PCB



Internal View with Main PCB Removed



Internal View with PCBs Removed

