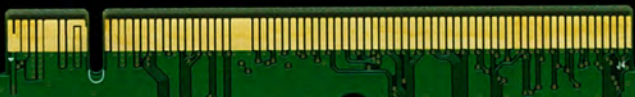


WIS 1G Base RX Interface



100213-016-4.0
RDGI P/N: 2C-0252

002



RX Module
#1



RX Module
#2



RX Module
#3



RX Module
#4



RX Module
#5



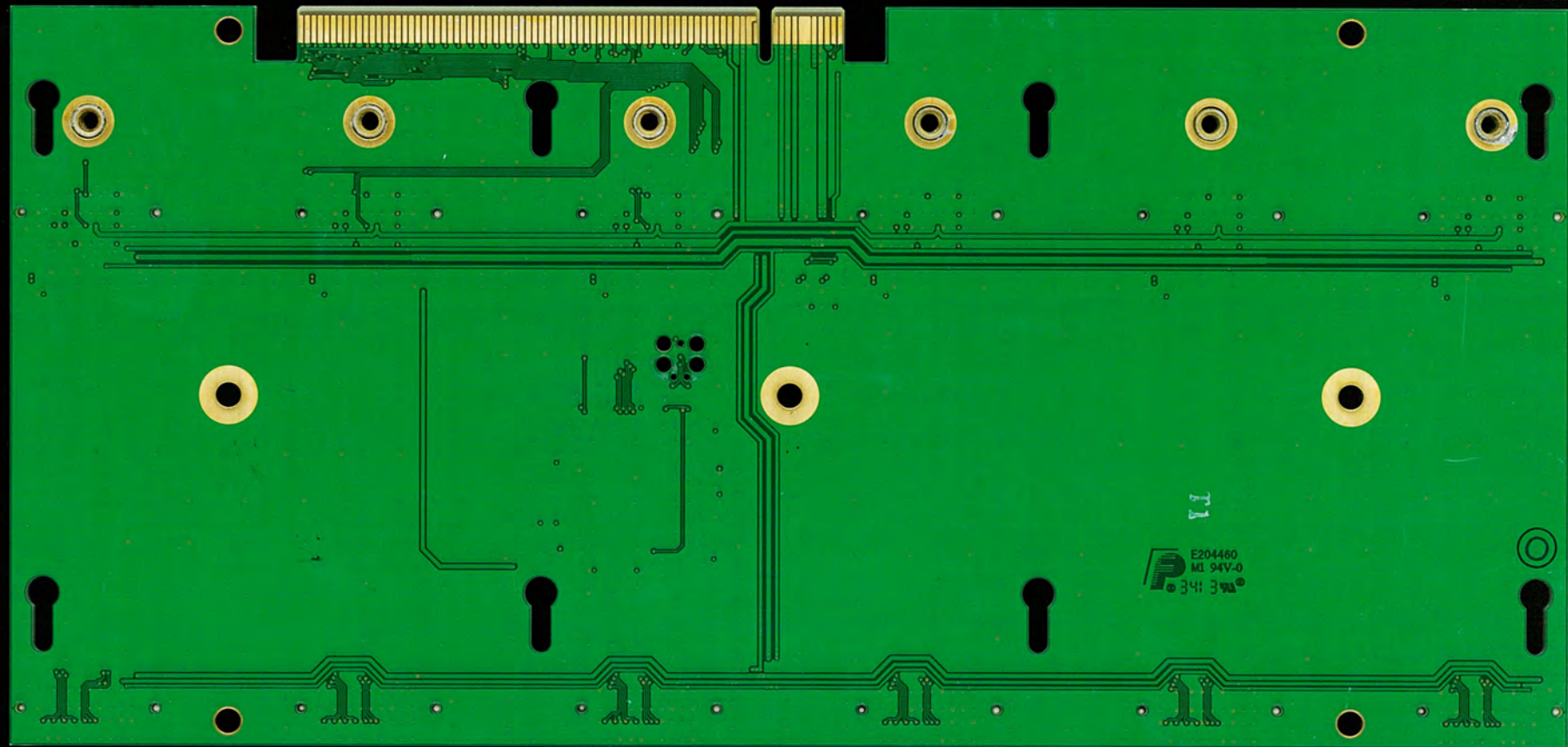
RX Module
#6

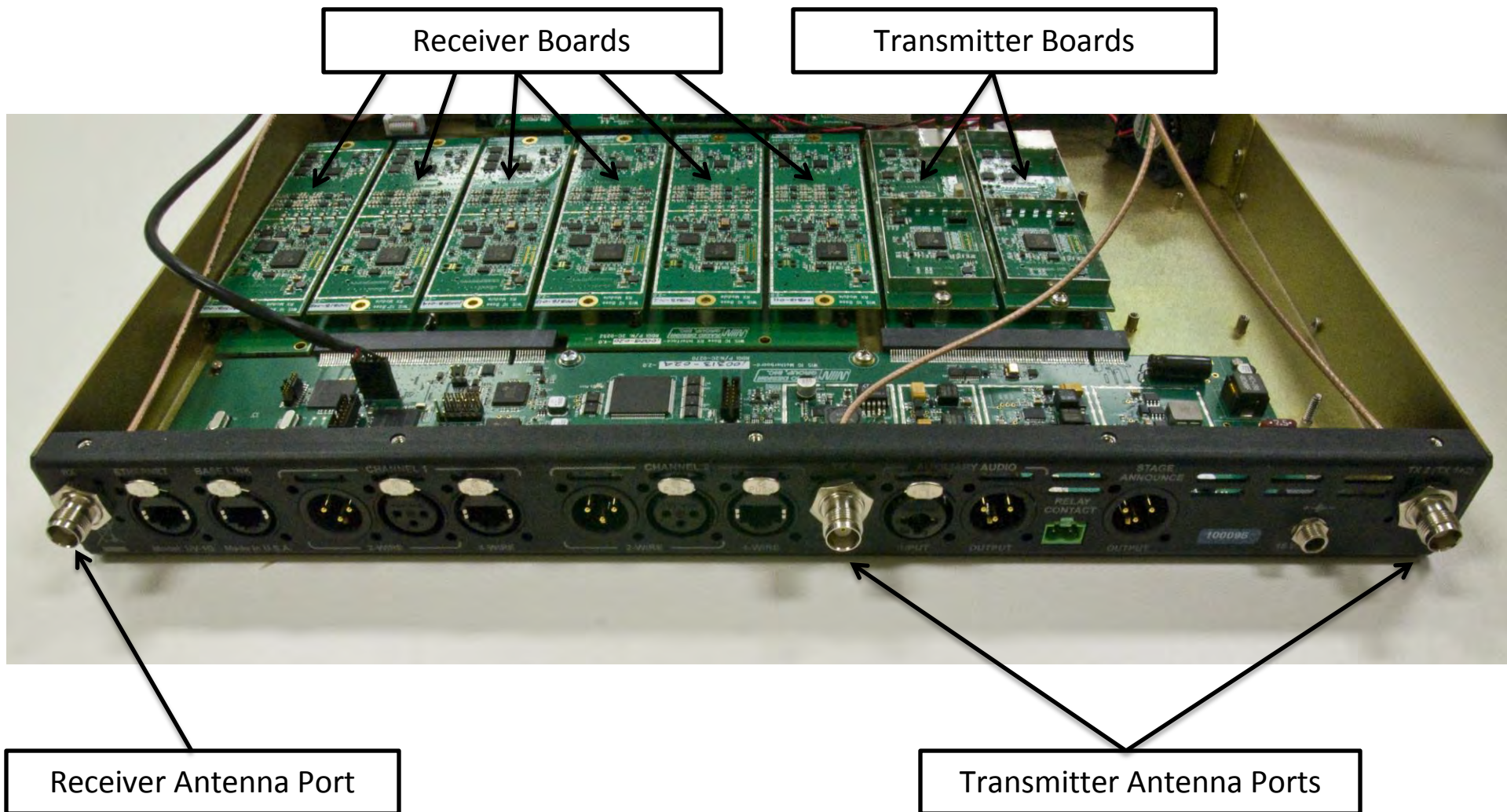


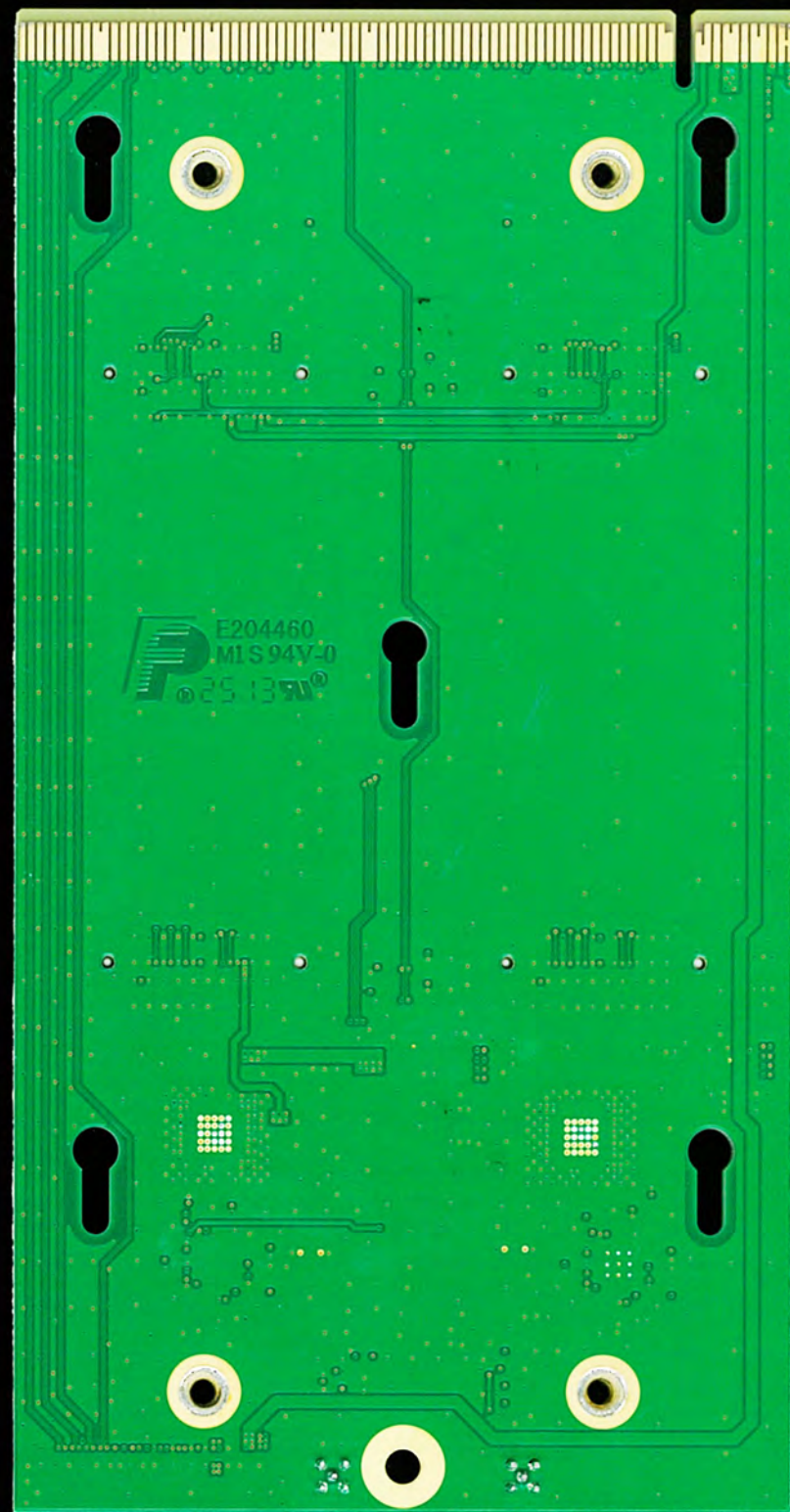
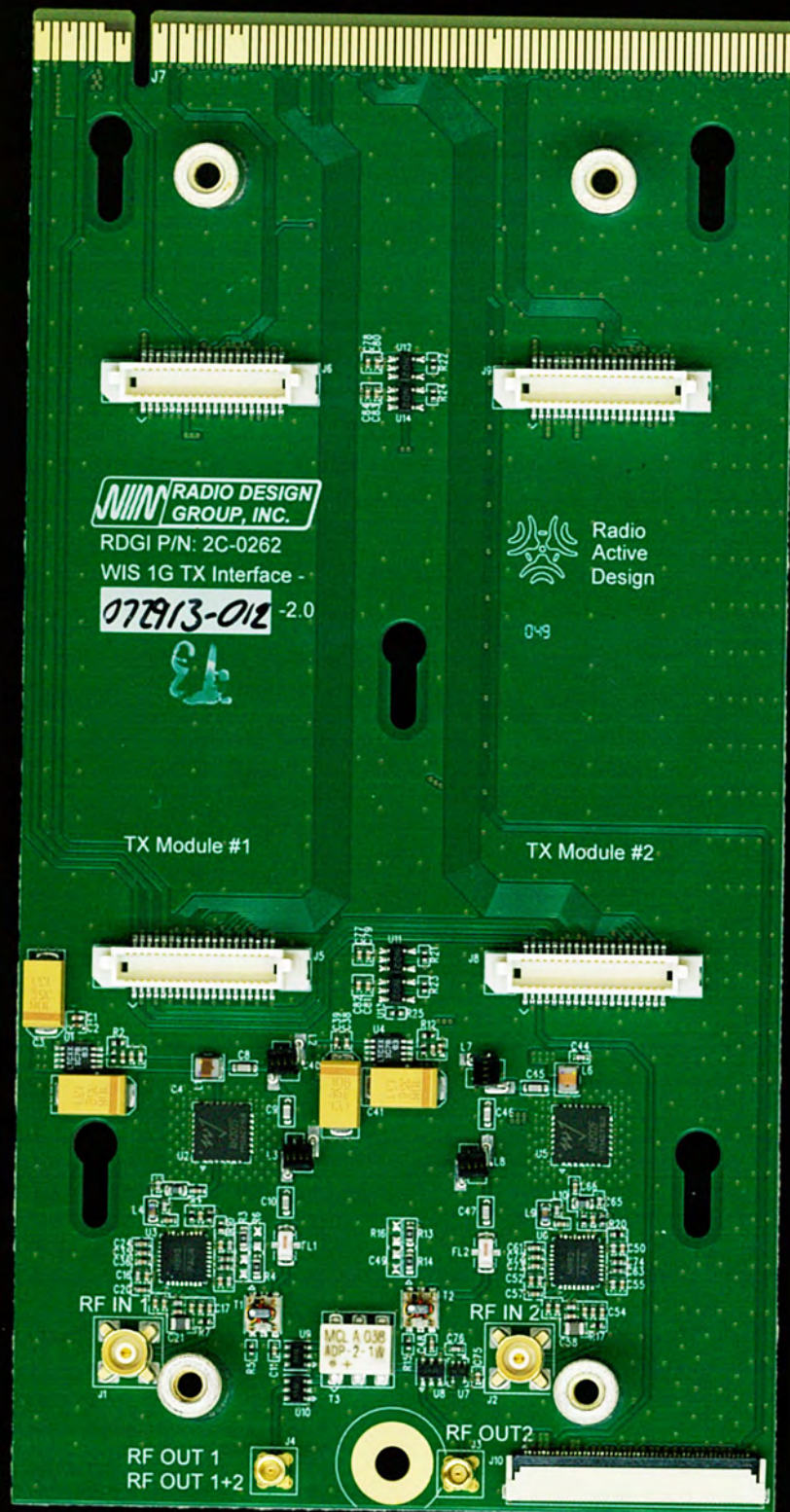
Program
Status

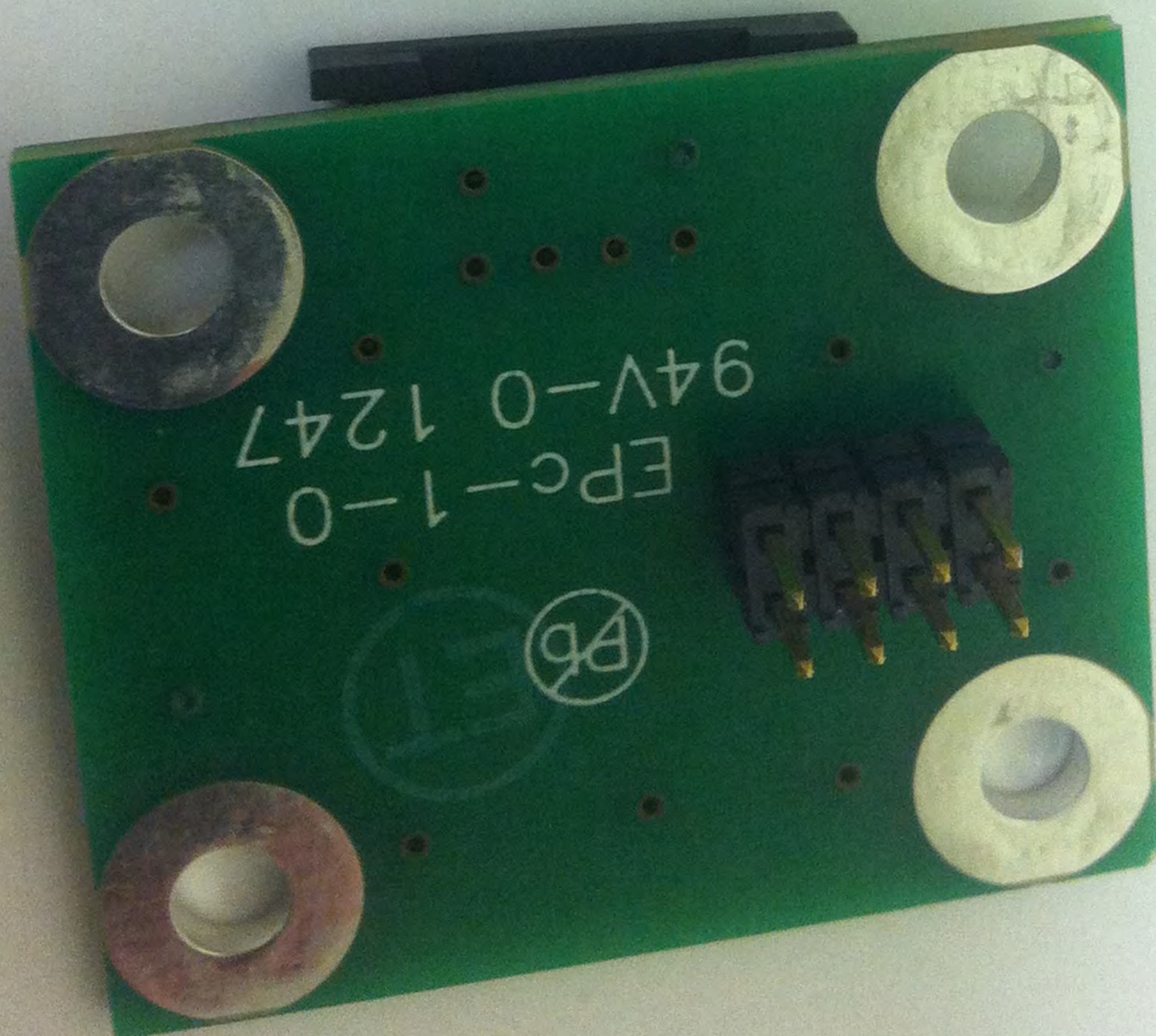
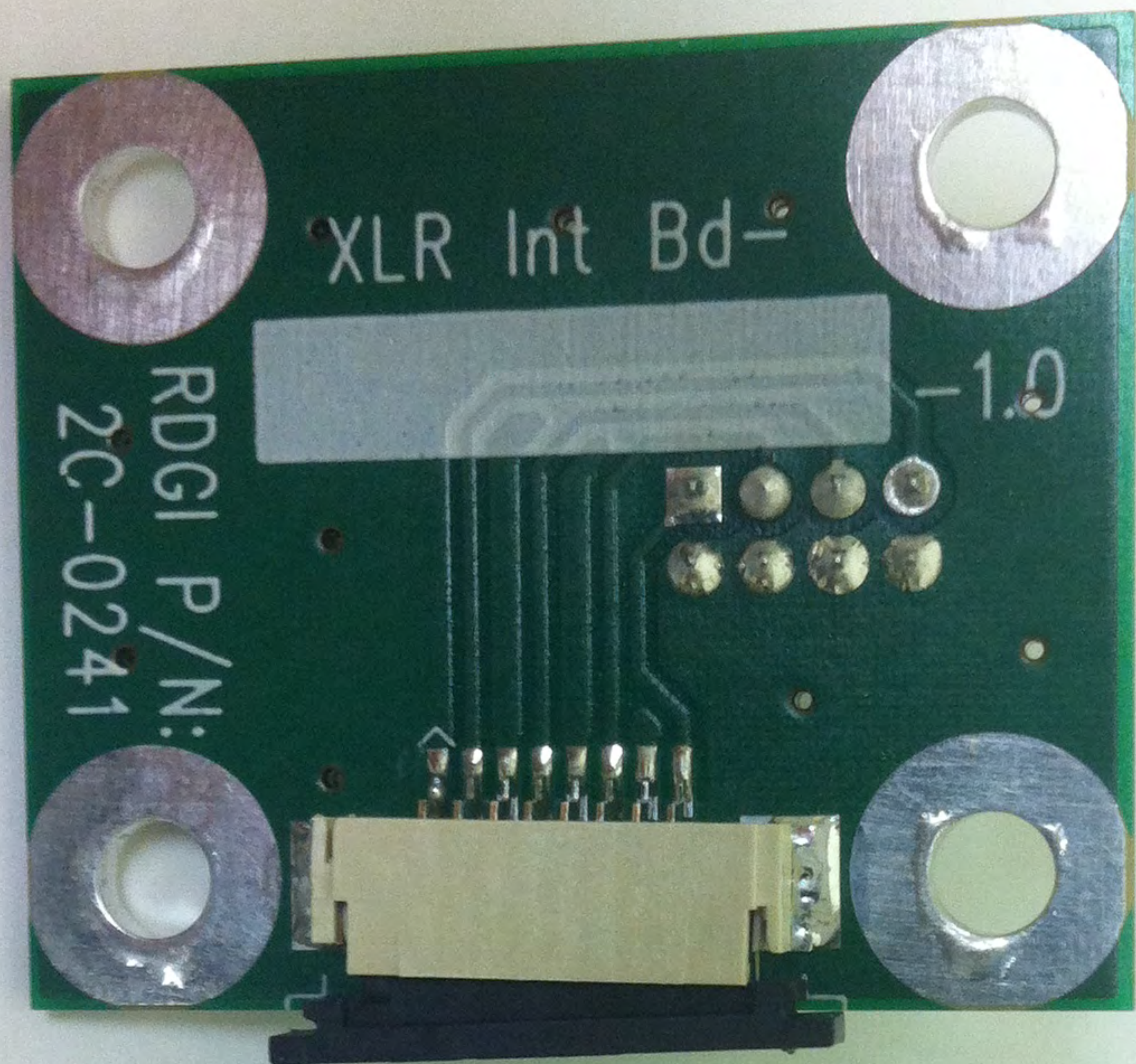
JTAG

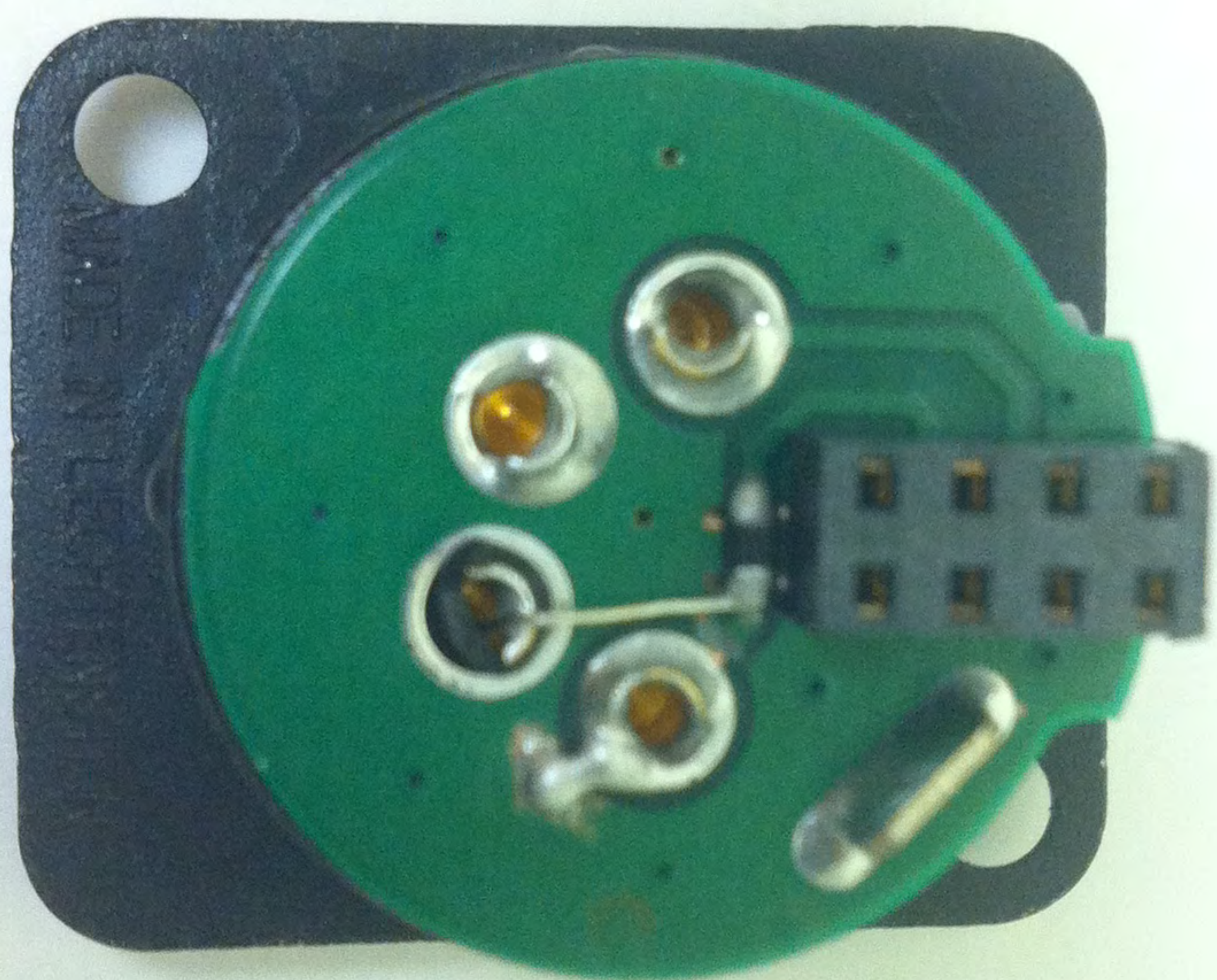












E204460
MIS 94V-0

RADIO DESIGN
GROUP, INC.

007

Radio
Active
Designs

WIS 1G RX Splitter

072913-009

-2 0

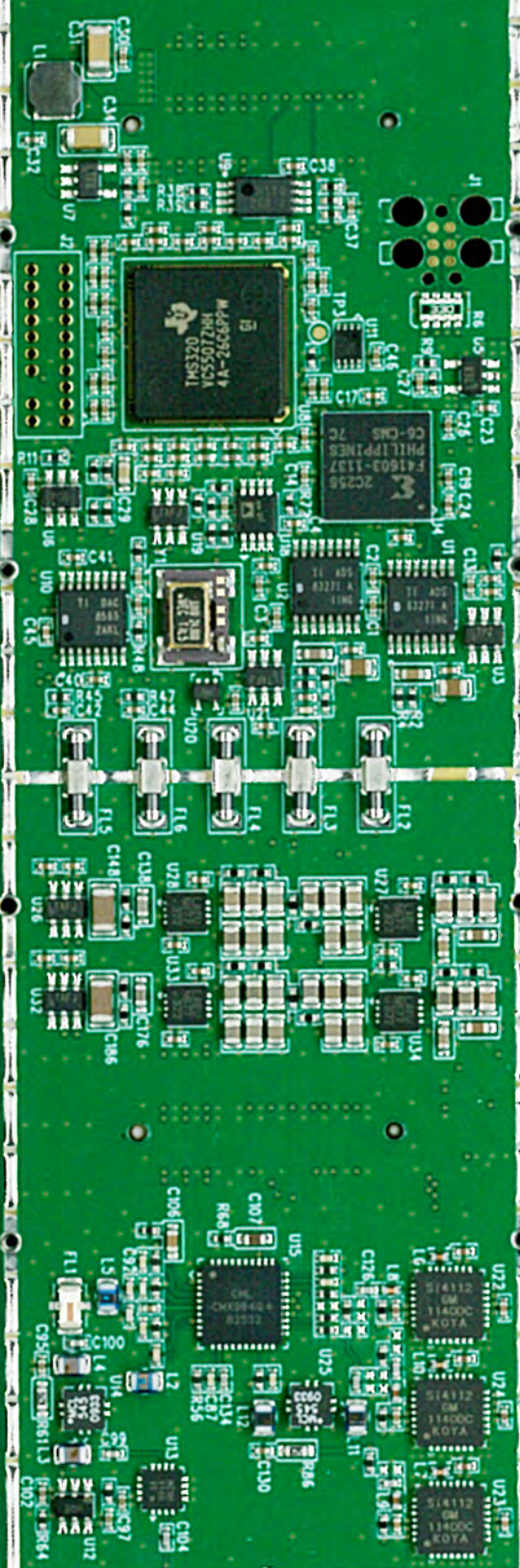
RDGI P/N 2C-0258

RF IN

+12V
GND

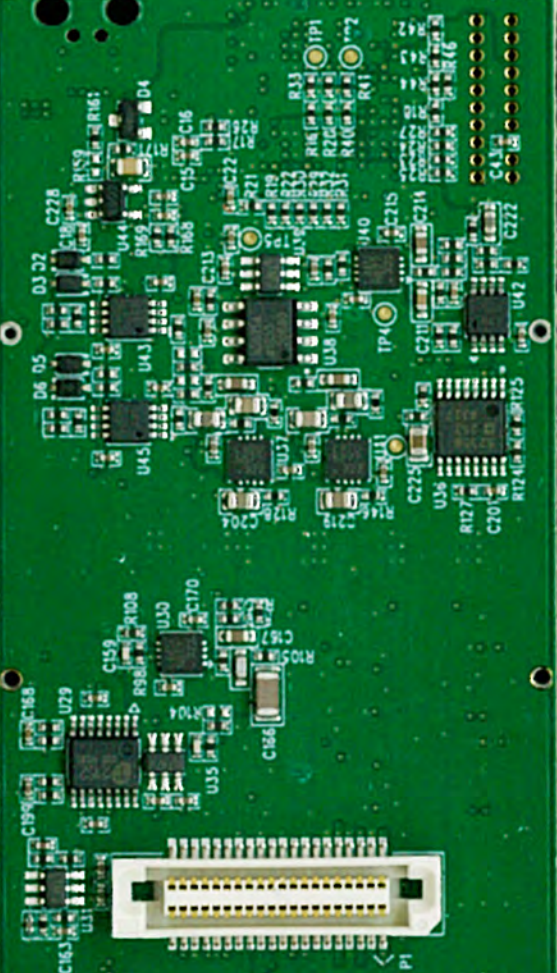
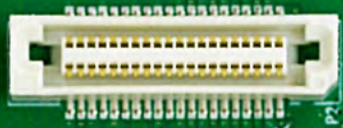
WIS 1G Base
RX Module

100313-028
-2.0

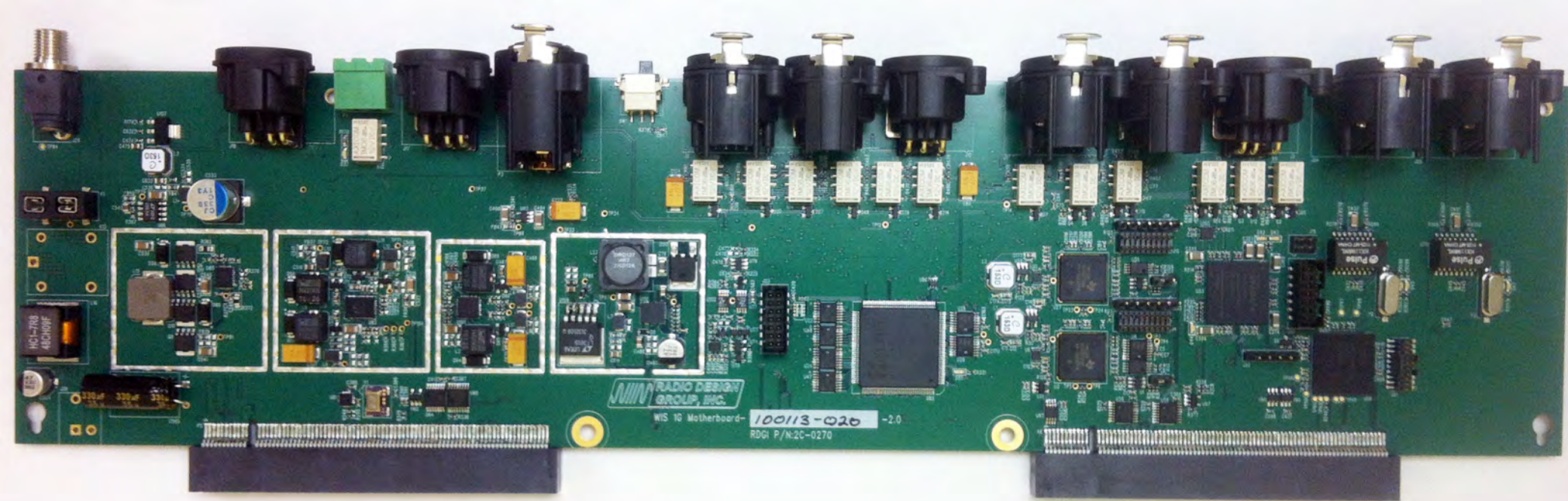


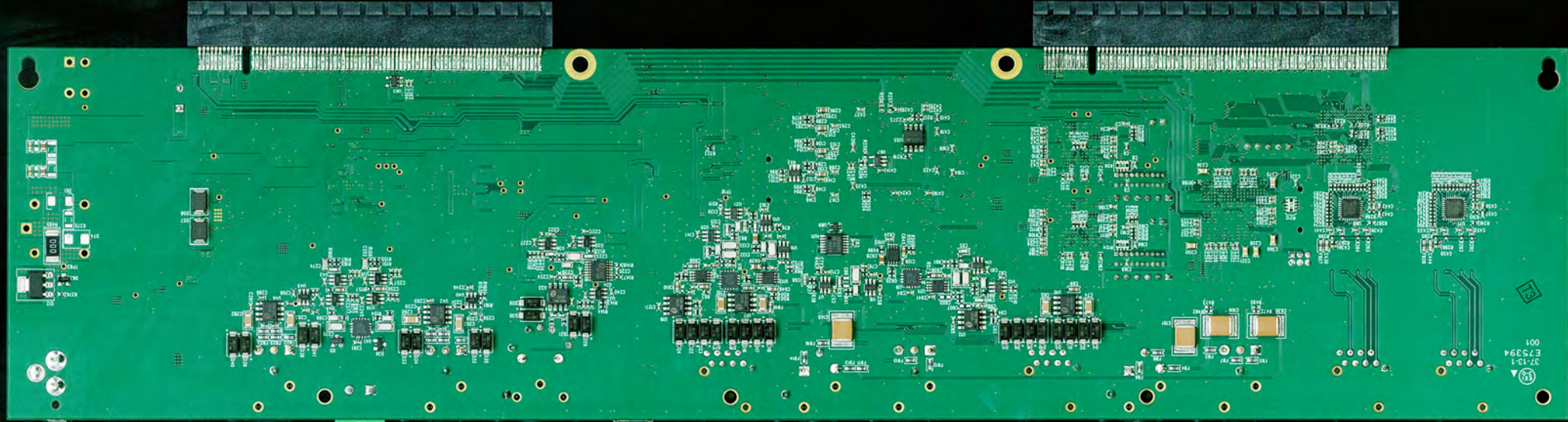
8920-C:2/N/P

RADIO DESIGN
GROUP, INC.



E204460
M11S94V-0
T9





37-13-1
E7S394
001

