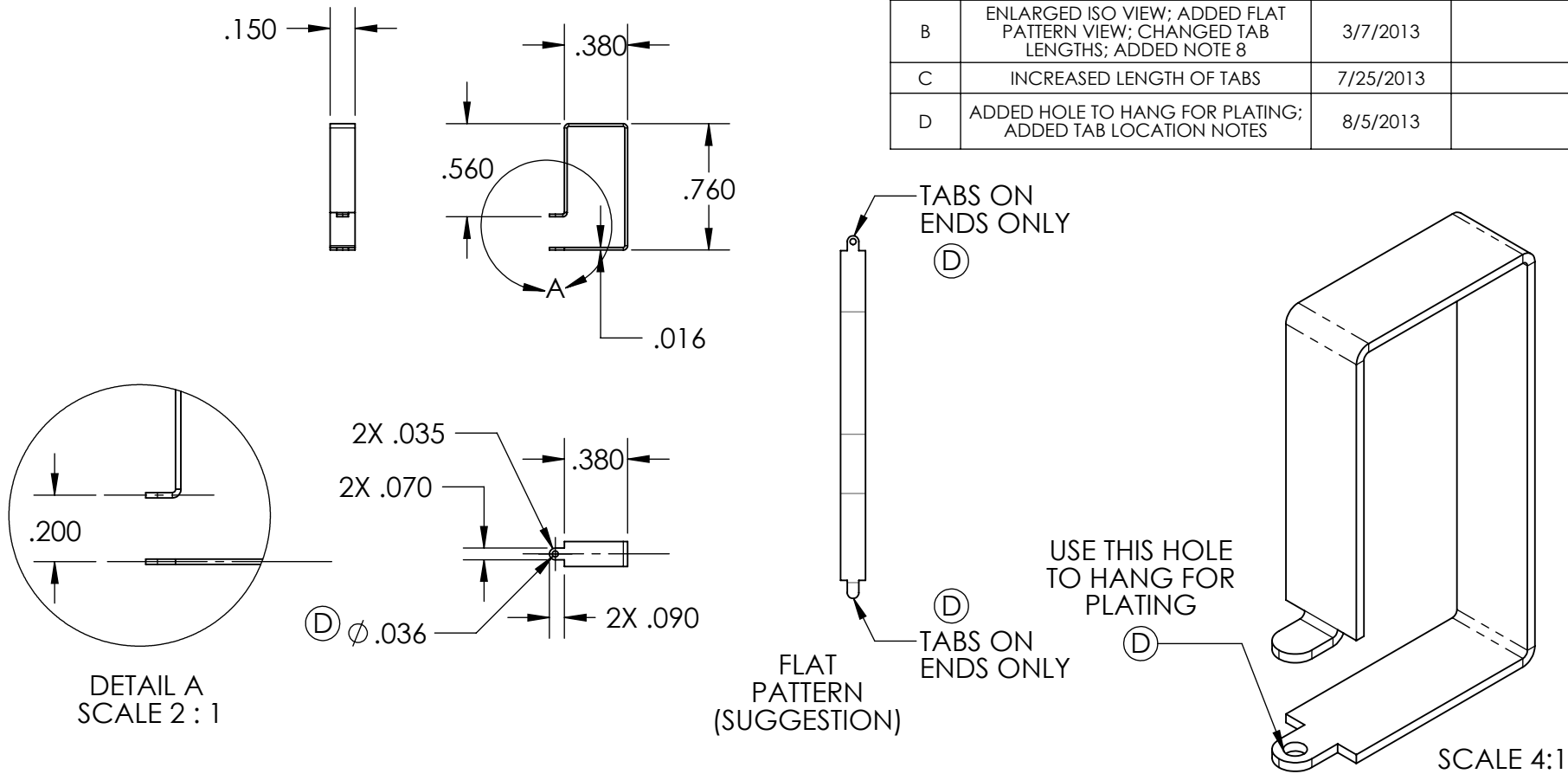


REVISIONS			
REV.	DESCRIPTION	DATE	APPROVED
A	PRODUCTION RELEASE	2/18/2013	
B	ENLARGED ISO VIEW; ADDED FLAT PATTERN VIEW; CHANGED TAB LENGTHS; ADDED NOTE 8	3/7/2013	
C	INCREASED LENGTH OF TABS	7/25/2013	
D	ADDED HOLE TO HANG FOR PLATING; ADDED TAB LOCATION NOTES	8/5/2013	



7. FINISH: SILVER PLATE PER QQ-S-365D, Type II, Grade A (**DO NOT** USE NICKEL IN THE PLATING PROCESS)
 8. CORNERS **MUST NOT** BE ETCHED FOR BENDING - ADVERSELY AFFECTS RF PERFORMANCE

<div>UNLESS OTHERWISE SPECIFIED:</div> <div>1. DIMENSIONS ARE IN INCHES</div> <div>2. TOLERANCES: .XXX ± .010 .XX ± .015 ANGLES ± 3°</div> <div>3. REMOVE BURRS AND SHARP EDGES .015 MAX.</div> <div>4. NORMALITY, SQUARENESS AND PARALLELISM OF MACHINED SURFACES .004</div> <div>5. MACHINED DIAMETER ON A COMMON CENTERLINE CONCENTRIC WITHIN .002 T.I.R.</div> <div>6. <div>32/</div>✓ ALL MACHINED SURFACES</div>		<div>PROPRIETARY NOTE:</div> <div>This document and the information it contains are proprietary and may not be used, assigned, or copied without the written consent of Radio Design Group</div>		<div>RADIO DESIGN GROUP, INC.</div> <div>8925 Rogue River Highway, Grants Pass, OR 97527-4377</div>		
<div>THIRD ANGLE PROJ.</div> <div>MAT .016" COPPER STRIP</div>		APPROVALS		DATE		
		DRAWN BY D. BULLOCK		02/18/13		
<div><div><div><div></div></div></div><div><div></div></div></div>		CHECKED				
		APPROVED				
		SHEET SIZE A		DWG NO. 10-0317		
		SCALE: 1:1		SHEET: 1 OF 1		