

# Quick Installation Guide

---

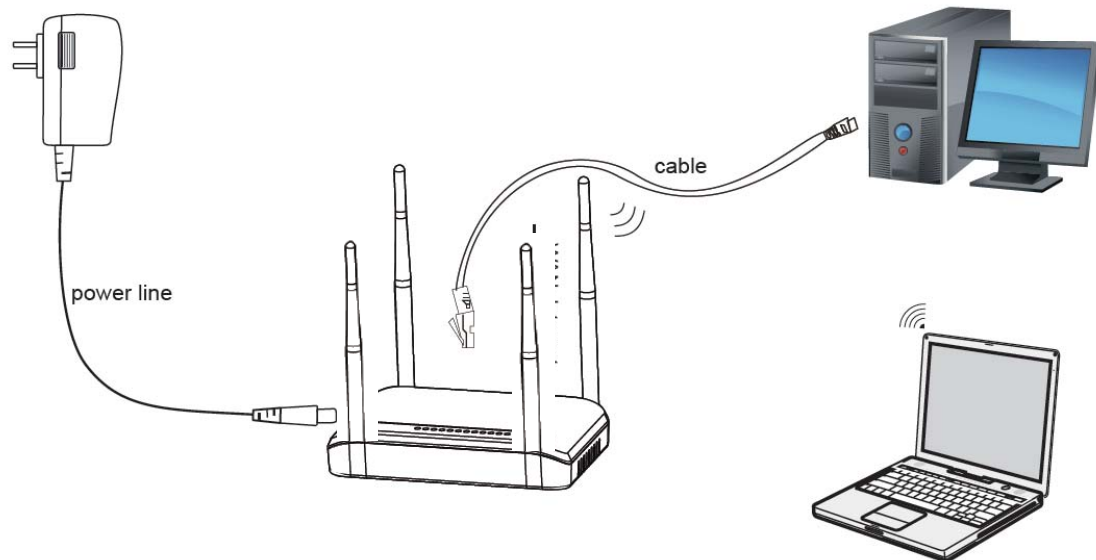
Wireless Router

Model: HT-600

Item List: ● WirelessRouter ● A Quick Installation Guide ● A Adapter

# Hardware Connection

The wireless Router in the power supply, the routers start-up,the computer can be connected through a wired network or wireless device.



When connected, please check the lights are normal:

LED	LED status	Description
Power	Green	The router is working.
WLAN	Green	The wireless has been enabled.
LAN	Green	LAN connection is normal.
WAN	Green	WAN connection is normal.

Warning:

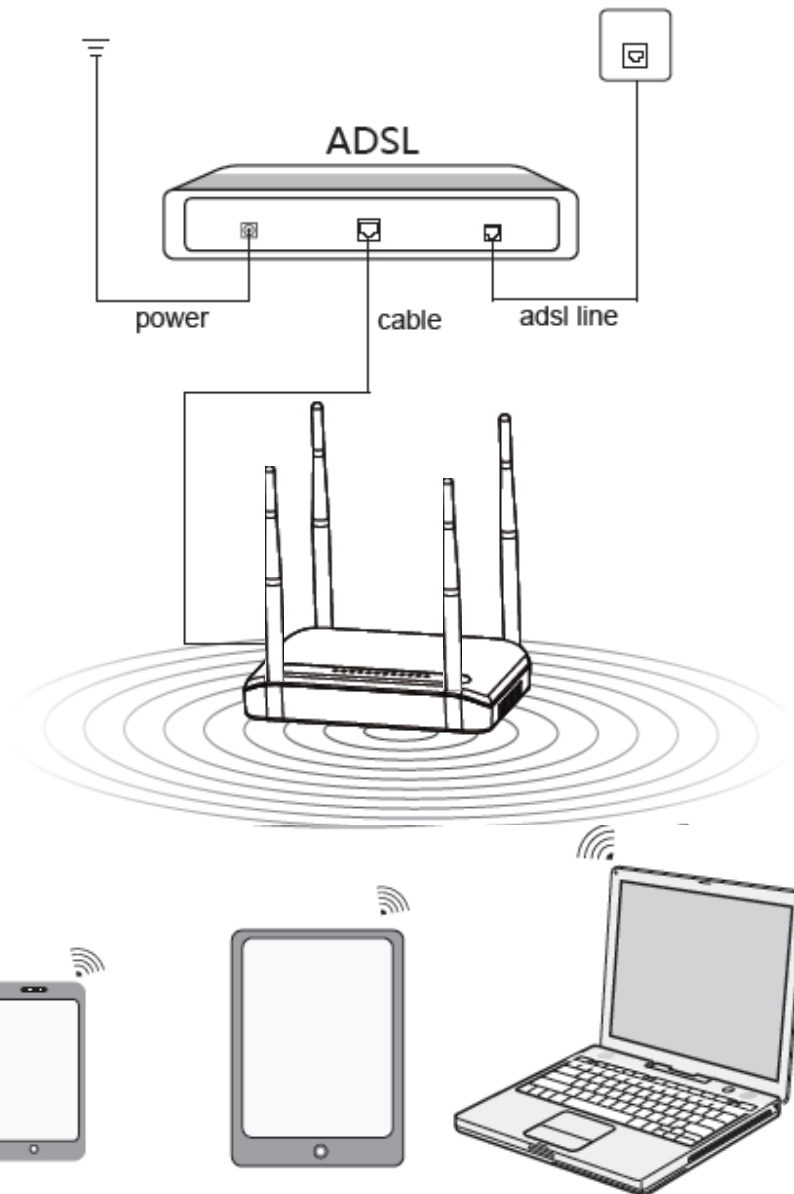
1. In thunderstorms, please remove the device's power and remove all connections, so as not to suffer from lightning damage;
2. Keep away from heat, keep the ventilation;
3. In storage, transport and operating environment, please note that waterproof.

## Three applications mode introduced

### 1. Router mode

You can use cable to connect to the ADSL Modem. Computer through wired or wirelessly connected to the device to share Internet access, computer's IP address and DNS address can be set to automatically accessible manner.

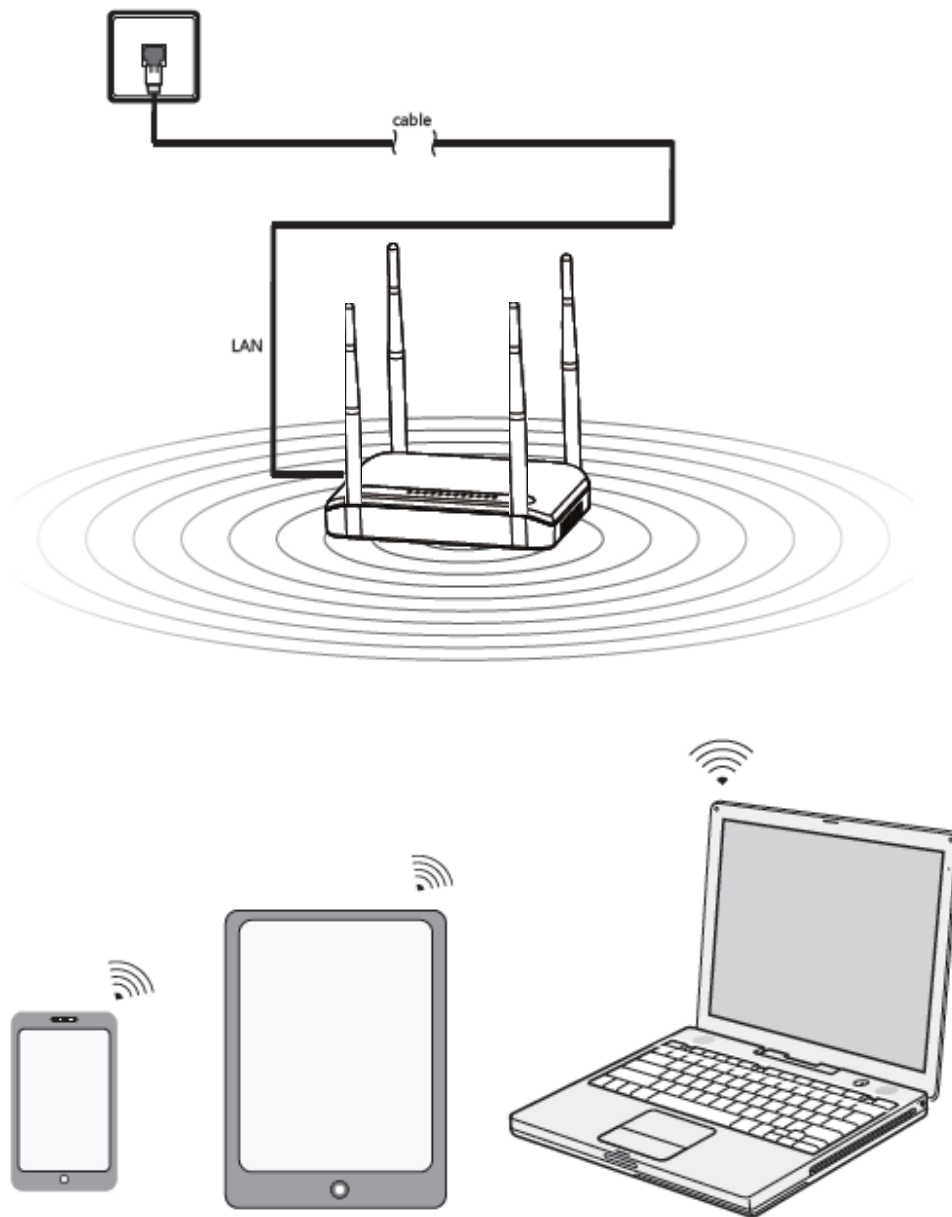
Apply to ordinary families, apartment, etc.



### 2. AP mode

The wireless access point AP, this mode simply set the equipment into bridge mode, connecting the network cable, then connect the computer wirelessly to the device to the Internet.

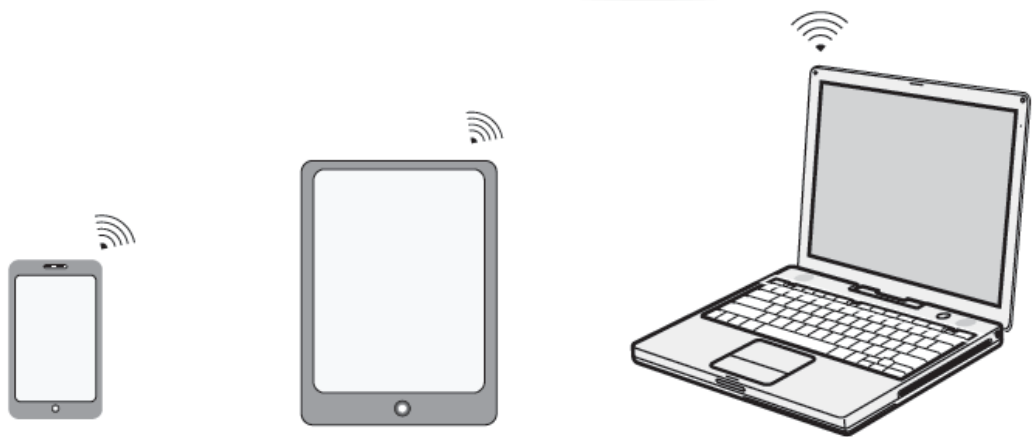
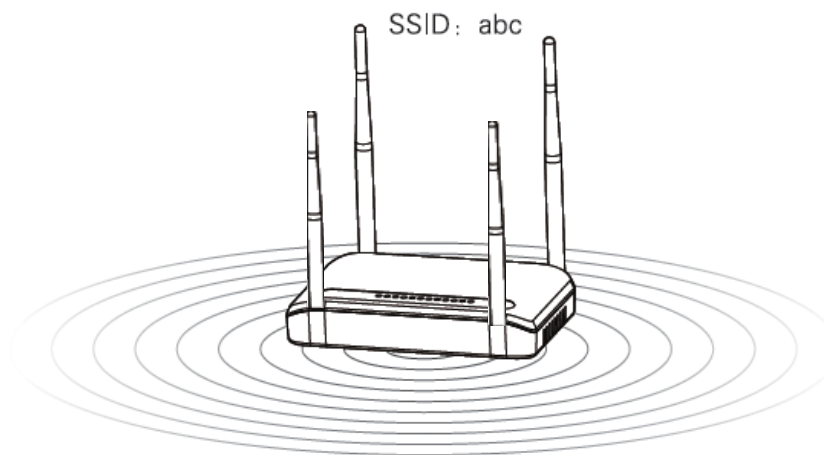
Apply to schools, dormitories, etc.



### 3. Repeater mode

University Repeater mode: wireless router wireless signal coverage can not meet the needs of users, universal repeater function to extend the wireless signal on a router.

SSID:123

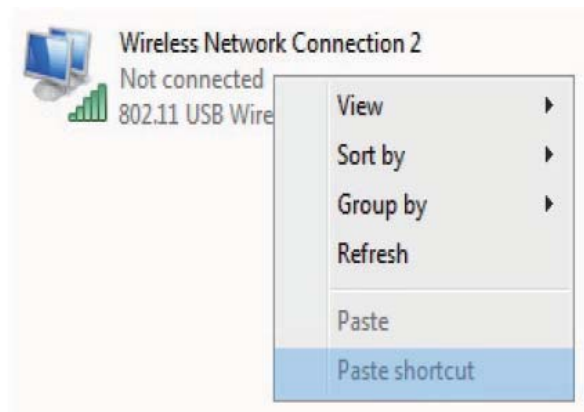


# Set up and correctly configured PC TCP/ IP parameters

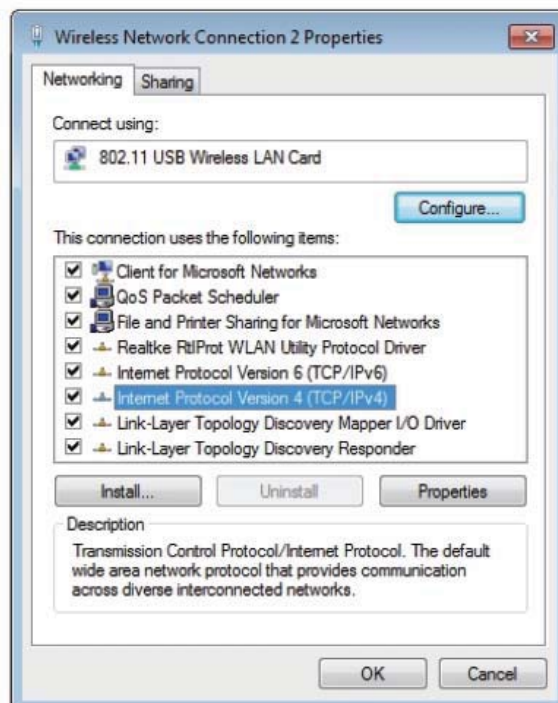
(Before setting, please make sure that your computer installed wireless card, Windows 7 system as an example to explain.)

## 1. Wireless network Settings:

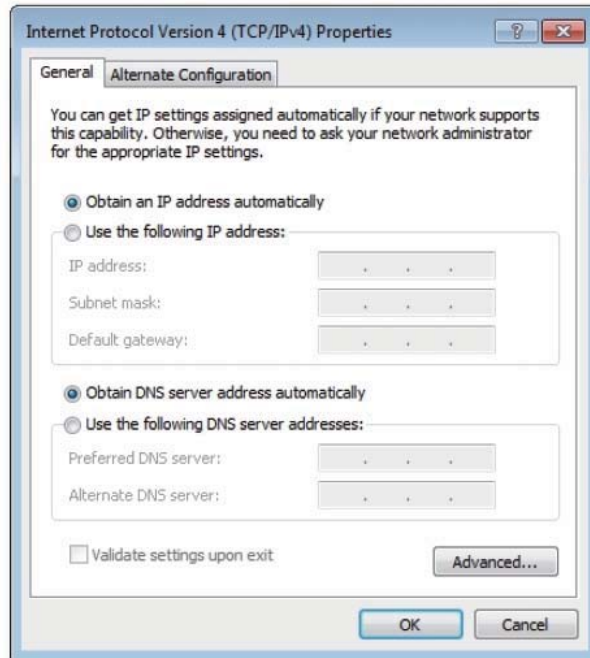
a. click “start – Control Panel–Network and Internet–Network and Sharing Center–Change adapter settings–Wireless Network Connection”. Right click “Wireless Network Connection”, Select “Properties”;



b. Double-click “Internet Protocol Version 4 (TCP/IPv4)”;



c. Set the computer's IP is "Obtain an IP address automatically" and "Obtain DNS server address automatically", After setup is complete click "OK", Return to the previous screen, click "OK" to save the settings.

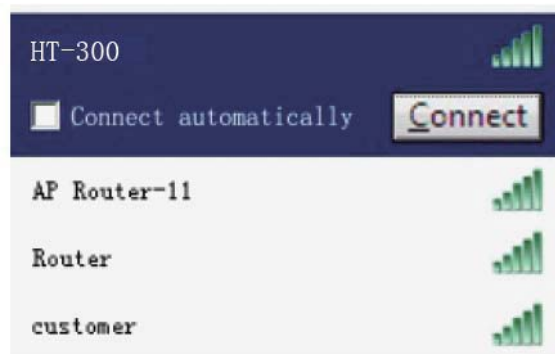


## 2. Wireless network connection

a. Network card installed, the icon appears bottom right corner of the desktop, Click on the icon;



b. In the pop-up list, select the network to connect to the wireless network, Click "Connect" button;



c. When the screen shows "Connected" when the computer has successfully connected to the network.



Note: The default not open wireless encryption, suggest you encrypted establish safe wireless network connection.

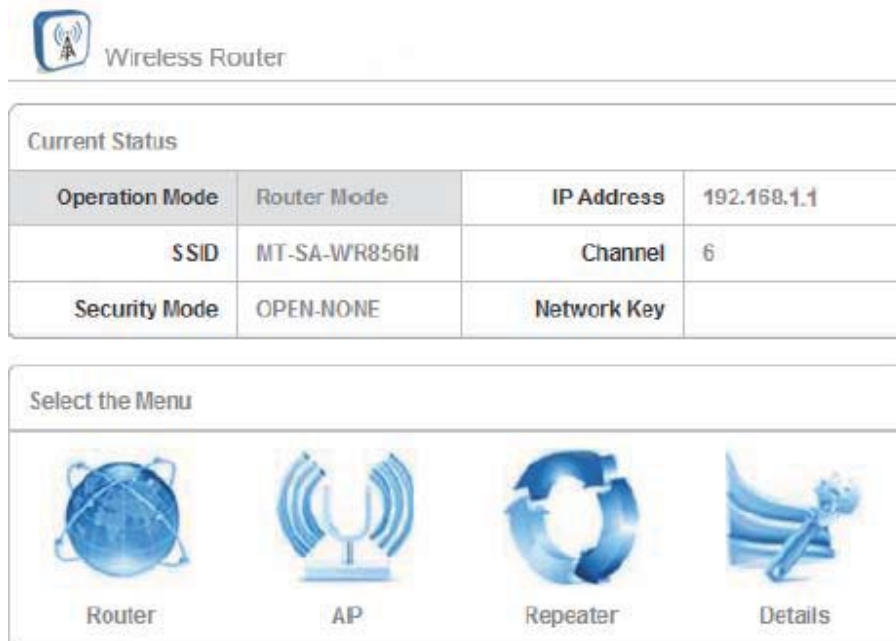


## Login the router management interface

a. Open the IE browser, Type in the address bar is <http://192.168.1.1>, press Enter; In the pop-up login window username: admin; Password: admin; then click "OK";



b. Into the main interface of the router;



c. Select the corresponding application mode on the main interface of the

router;

Route mode---PPPoE Dial-up mode Setup Guide

①.Router mode is selected, click PPPoE, enter the username and password provided by your ISP, and click "Next" to enter the appropriate settings;

Router Settings	
Step 1	Configure Internet Connection
Step 2	Configure Wireless Settings
Step 3	Save settings and Reboot

Internet Settings	
WAN Connection Type	<input type="radio"/> Static IP <input type="radio"/> DHCP <input checked="" type="radio"/> PPPoE

PPPoE	
User Name	*****@163.com
Password	*****
Verify Password	*****

Clone MAC Address	
MAC Address	<input type="text"/> <input type="button" value="Clone MAC"/>

②. Configure the wireless SSID and select the encryption method and enter your wireless

Router Settings	
Step 1	Configure Internet Connection
Step 2	Configure Wireless Settings
Step 3	Save settings and Reboot

Wireless Settings	
SSID	HT_soho_300
Security Mode	<input type="radio"/> Disable <input type="radio"/> WEP <input type="radio"/> WPA-PSK <input type="radio"/> WPA2-PSK <input checked="" type="radio"/> WPA/WPA2

WPA/WPA2	
Encryption Type	<input type="radio"/> TKIP <input checked="" type="radio"/> AES
Network Key	***** (8~63 Any Characters)

password; click "Apply";

AP Settings	
Step 1	Configure Wireless Settings
Step 2	Save settings and Reboot

Wireless Settings	
SSID	HT_soho_300
Security Mode	<input type="radio"/> Disable <input type="radio"/> WEP <input type="radio"/> WPA-PSK <input checked="" type="radio"/> WPA2-PSK <input type="radio"/> WPA/WPA2

WPA2-PSK	
Encryption Type	<input type="radio"/> TKIP <input checked="" type="radio"/> AES
Network Key	12345678 (8~63 Any Characters)

②. Save the configuration and restart.

AP Settings	
Step 1	Configure Wireless Settings
Step 2	Save settings and Reboot

Save settings and Reboot
The Router is rebooting. Please wait for 21 seconds
After this router is restart, wireless connection is disconnected. Please reconnect your wireless clients to router using followings.

Wireless information to connect			
SSID	HT_soho_300	Network Key	12345678

#### Repeater mode Setup Guide

①. To select repeater mode in the main interface of the router, enter the repeater settings page, click the SCAN search nearby SSID, then select the SSID you want to connect to, and then enter the wireless password, click "Apply";

Universal Repeater Settings					
<b>Step 1</b>		Scan and Wireless Connection			
<b>Step 2</b>		Save settings and Reboot			

Scan Wireless Signal					SCAN
SSID	BSSID	cha	Security	RSSI	Sel.
RT305x_AP_Test	00:c0:0b:01:0c:0a	6	Open	76	<input type="radio"/>
WR729N_Beta	00:01:9f:11:51:3f	6	WPA2-AUTO	86	<input checked="" type="radio"/>

Wireless Settings	
SSID	HT_soho_300
Security Mode	<input type="radio"/> Disable <input type="radio"/> WEP
	<input type="radio"/> WPA-PSK <input checked="" type="radio"/> WPA2-PSK <input type="radio"/> WPA/WPA2

WPA2-PSK	
Encryption Type	<input type="radio"/> TKIP <input checked="" type="radio"/> AES
Network Key	11223344 (8~63 Any Characters)

②. Save the configuration and restart.

Universal Repeater Settings	
<b>Step 1</b>	Scan and Wireless Connection
<b>Step 2</b>	Save settings and Reboot

Save settings and Reboot
<p>The Router is rebooting. Please wait for 19 seconds</p>
<p>After this router is restart, wireless connection is disconnected. Please reconnect your wireless clients to router using followings.</p>

Wireless information to connect			
SSID	HT_soho_300	Network Key	11223344

d. In the home page click on details, enter the page you can see the WAN、LAN、WLAN connection status and other information.

FAQ:

1. How to return to factory Settings?

A: In the case of powered, press and hold the back of the Reset button and hold it for 5-8 seconds and then release.

Note: Reset after the original configuration information will be lost, the factory default login IP: 192.168.1.1, the default user name and password: admin.

2. Why not search for wireless signals laptop?

A: Please check the following aspects were:

①. If the laptop built-in wireless card, make sure the wireless LAN function switch is turned on;

②. In the Device Manager to view the wireless network card driver has been installed successfully and the wireless card is enabled, As follows: Right-click "My Computer", Select "Properties" → "Hardware" → "Device Manager", In the device list, LAN network card driver in front of the green logo that has been successfully installed and enabled, if the network card icon in front of a red cross, that card is not enabled, right-click the network card, select Enable; If the network card icon of the front there is a question mark or an exclamation point, said nic drivers not to install success, please reinstall the nic driver. If not found network card, please right click on any icon, select the "scanning for detecting hardware changes", or reinstall network adapter.

3. Check the laptop's wireless card service is open. As follows: (in windows XP for example), right-click on the desktop "My Computer", select "Management", in Computer Management, select "Services and Applications" and then in the "Services" in view "Wireless Zero Configuration "of the state. If the status is not enabled, right-click "Wireless Zero Configuration" select enable, if startup type is disabled, right click select properties, the startup type to Automatic, and then status changed to enabled.

4. Try to close whether can search to wireless signals, avoid because too many obstacles to signal attenuation serious.

If still search less than wireless signals, Please try to use other wireless network card whether can connect to a wireless router, if you can't, please will restore to factory Settings, and reset router.

**FCC Caution:** Any changes or modifications not expressly approved by the party responsible for compliance could void the user's authority to operate this equipment.

This device complies with Part 15 of the FCC Rules. Operation is subject to the following two conditions: (1) This device may not cause harmful interference, and (2) this device must accept any interference received, including interference that may cause undesired operation. This device and its antenna(s) must not be co-located or operating in conjunction with any other antenna or transmitter.

This equipment should be installed and operated with minimum distance 20cm between the radiator and your body.

NOTE: This equipment has been tested and found to comply with the limits for a Class B digital device, pursuant to Part 15 of the FCC Rules.

These limits are designed to provide reasonable protection against harmful interference in a residential installation. This equipment generates, uses and can radiate radio frequency energy and, if not installed and used in accordance with the instructions, may cause harmful interference to radio communications.

However, there is no guarantee that interference will not occur in a particular installation.

If this equipment does cause harmful interference to radio or television reception, which can be determined by turning the equipment off and on, the user is encouraged to try to correct the interference by one or more of the following measures:

- Reorient or relocate the receiving antenna.
- Increase the separation between the equipment and receiver.
- Connect the equipment into an outlet on a circuit different from that to which the receiver is connected.
- Consult the dealer or an experienced radio/TV technician for help.