

crema *Shine*

TABLET COMPUTER

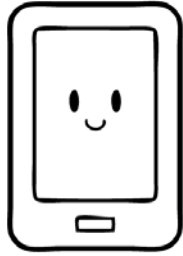
User Guide

KEPH

Contents

- 01 Get started
 - WiFi connection
 - Brightness adjustment
 - Screensaver & Charging
- 02 How to use content
- 03 Setting
- 04 Warranty
- 05 A/S

WiFi connection



Welcome to crema

Start >

► Press 'Start' at Welcome screen

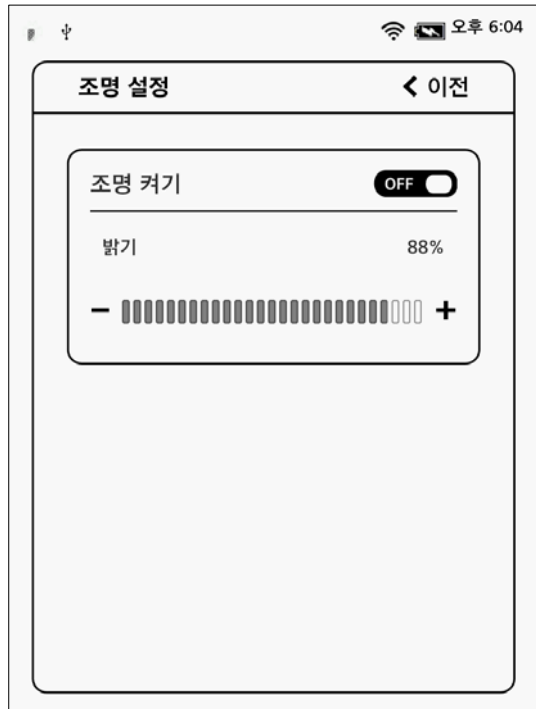
- Device is turned off.
- Press power button for 2 second to turn on.
- Press 'start' at welcome screen to move to the next.



► WiFi connection

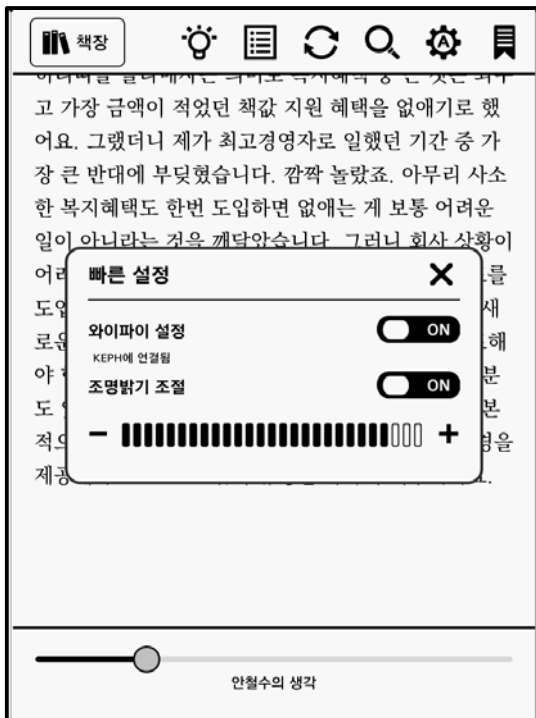
- Find available WiFi access point and connect the device with password.
- WiFi icon shows up in status bar.
- After WiFi connection, the device is allowed to be registered and used.

Brightness adjustment



► Brightness adjustment

- Light is turn on/off at '조명 설정'.
- Brightness is adjusted from 0% to 100%.
- Light is also turned on/off with pressing home button for 2~3 sec.



► Quick setting

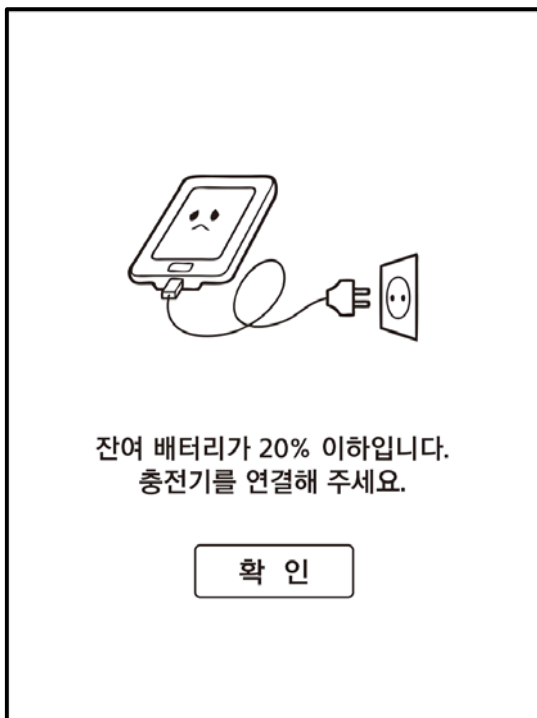
- Quick setting is available when status bar get pressed at viewer or shelf screen.
- WiFi and light is turned on/off with Quick setting.
- Using light gets battery life shorter.

Screensaver & Charging



▶ Sleep mode

- The device goes into sleep mode when it has not been used for 5 minutes.
- Press power button shortly to wake the device up.
- Time period for entering sleep mode is selected at '설정>스크린세이버 설정' after pressing home button.



▶ Battery charging

- When battery is less than 20%, screen of charging notice pops up.
- When it is less than 7%, the device stops working and needs charging.
- Battery lasts longer when WiFi and light are disable.

How to use content



▶ Downloading

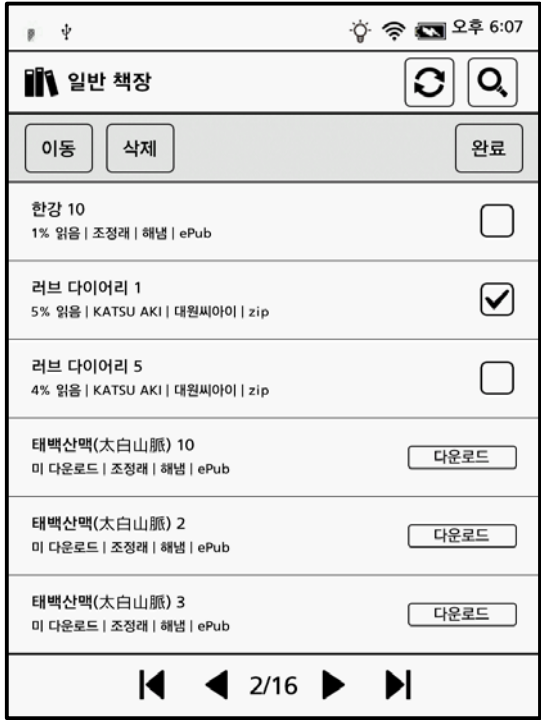
- Press 'download' while WiFi connected.
- The first page appears after completing download.
- Contents downloaded on the device are always available regardless of WiFi connection.



▶ Setting

- Press '설정' on top and move to setting menu.
- According to user account of designated bookstore, 5 devices are managed and SNS is available.
- When authentication of the device is cancelled, all contents downloaded are deleted.

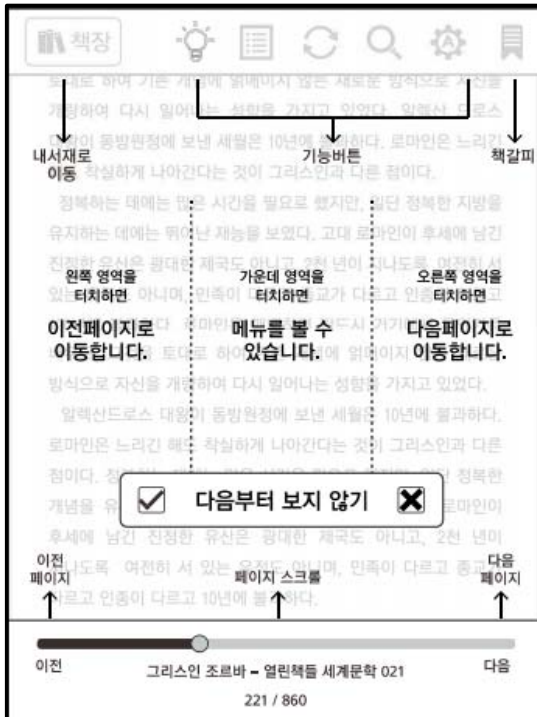
Content mangement



▶ Copy/Delete

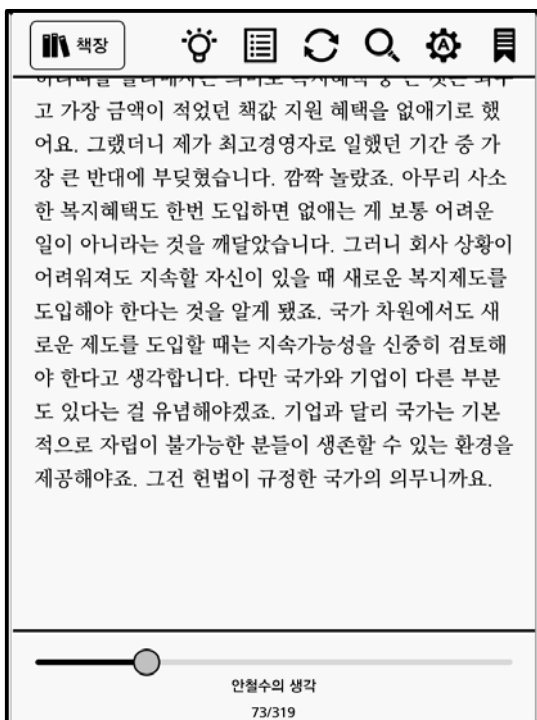
- Press '편집' on top to delete downloaded content.
- Delete is available only for downloaded contents.
- Downloaded content is moveable to user made folder.

Viewer



▶ Viewer guide page

- When viewer is executed for the first time, viewer opens the viewer guide page.
- The viewer guide page provides explanation on functions and touch area of viewer.
- Choose '다음부터 보지 않기' if the viewer guide page is not needed any more.



▶ Page turn

- Touch right/left area or using slide bar.
- Choose menu bar on top and then press slide on bottom and move right/left.
- Use content list icon of menu bar on top to move required page.

Viewer

글꼴 설정		완료
<p>도서 스타일 유지가 선택된 상태에서는 하단의 기능을 사용할 수 없습니다. 도서 스타일 유지를 해제하면 글자 크기, 글꼴, 컬러 모드, 줄 간격, 여백, 문단 정렬, 문단 간격,</p>		
글자 크기		
가 가 가 가 가		
글꼴		
<input checked="" type="radio"/> 기본 글꼴 <input type="radio"/> 크레마 명조 <input type="radio"/> kopub 바탕 <input type="radio"/> 서울한강체 <input type="radio"/> 서울남산체		
줄간격		여백
<input type="radio"/> <input type="radio"/> <input type="radio"/>		<input type="radio"/> <input type="radio"/> <input type="radio"/>
정렬		설정
<input type="radio"/> <input type="radio"/> <input type="radio"/> <input type="radio"/>		터치 영역 설정 >
<input checked="" type="checkbox"/> 체크 시, 원본 도서의 스타일을 유지합니다. <input type="checkbox"/> 체크 해제 시, 원본 도서의 스타일을 편집합니다.		

► Font

- The viewer provides customized reading environment with various options for font size, font type, line interval, space.
- Choose '원본 스타일 유지' to return to default setting values. Values except font size are not changeable.

터치 영역 설정		완료
<선호하는 탭 영역을 지정해 주십시오>		
<div> <div>←</div> <div>→</div> <div>이전</div> <div>다음</div> </div>	<div> <div>→</div> <div>←</div> <div>다음</div> <div>이전</div> </div>	<div> <div>←</div> <div>→</div> <div>이전</div> <div>다음</div> </div>
기본 <input checked="" type="checkbox"/>	왼손잡이용 <input type="checkbox"/>	오른손잡이용 <input type="checkbox"/>

► Selecting hand to use

- Choose preferred touch frame according to using hand at '터치 영역 설정'.
- Default is '기본'. Touch right side to move to the next page or touch left side to move to the previous page.
- Choose '왼손잡이용' for left handed user.

사과



(1) 사과¹

[명사] 사과나무의 열매. 8-9월에 익으며, 붉고 새콤달콤하다.
- 사과는 붉고 윤이 나야 맛이 있다.

(2) 사과²

[명사] 자기의 잘못을 인정하고 용서를 빌.

(3) 사과³

[명사] 유학의 네 가지 학과. 덕행(德行), 언어(言語), 정치(政事), 문학(文學)을 이른다.

방식으로 자신을 개량하여 다시 일어나는 성향을 가지고 있었다.
알렉산드로스 대왕이 동방원정에 보낸 세월은 10년에 불과하다.
로마인은 느리긴 해도 착실하게 나아간다는 것이 그리스인과 다른 점이다. 정복하는 데에는 많은 시간을 필요로 했지만, 일단 정복한 개념을 유지하는 데에는 뛰어난 재능을 보였다. 고대 로마인이 후세에 남긴 진정한 유산은 광대한 제국도 아니고, 2천 년이 지나도록 여전히 서 있는 유적도 아니며, 민족이 다르고 종교가 다르고 인종이 다르고 10년에 불과하다.
정복하는 데에는 많은 시간을 필요로 했지만, 일단 정복한 지방을 유지하는 데에는 뛰어난 재능을 보였다. 고대 로마인이 후세에 남긴

31 / 50


20여 년간 꽤 많은 사람들을 만나 의견을 나눴습니다. 세미나에도 많이 참석했구요. 강의뿐 아니라 컨퍼런스(학술회의)에 참석해서 듣기를 좋아하는데 사람들이 알아보기 시작한 후로는 강사분들이 불편해하시는 것 같아 국내보다 해외 컨퍼런스에 주로 갔습니다. 인문학이나 문화에 대한 포럼, 소규모 금융전문가들 모임 등 정기 모임도 있습니다만 요즘은 잘 나가지 못하는 편입니다.

제 | 한가한 시간에 즐기는 취미는 어떤 게 있나요?

안 | 영화를 좋아해서 화제가 된 영화는 대부분 보는 퍼이니다. 디비디(DVD) 등을 통해 집에 메모 하이라이트 공유 때는 '마리오 카트' 처 아이와 함께 놀 수 있는 게임도 즐겨했습니다. 스포츠 중에는 야구를 좋아하는데, 제가 부산고를 다닐 때는 부산고가 3년 동안 전국 우승을 다섯 번이나 했을 정도로 야구 명문이라 응원하러 많이 다녔고, 이후 롯데 팬이 됐어요. 그런데 한동안 롯데가 계속 저서 지친 일도 있었어요. 그래서 성적이 나쁜 시즌에는 가슴이 아파 아예 경기를 보지 않기도 해요.

82/284

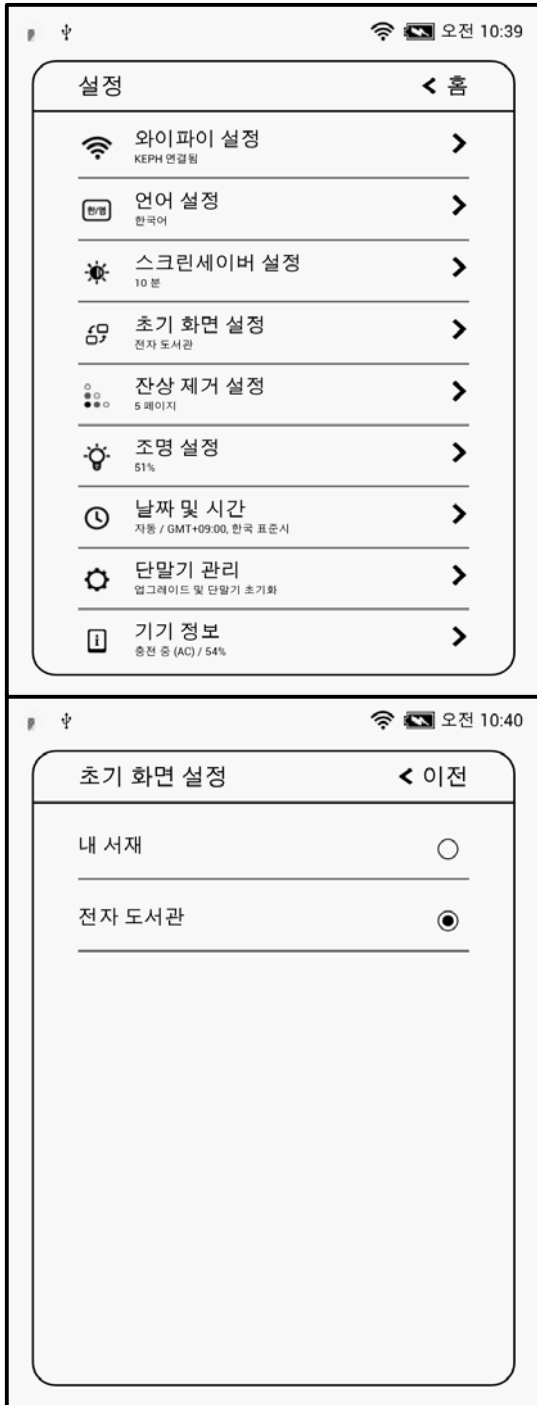
► Dictionary

- Press word for long and then searching result pops up on top.
- In case of a homonym or long result, touch pop-up to see more.
- Click icon() to look up word.


► Highlight/Memo/Share

- Press central page area for a long to get high-light/memo enable.
- Set or not set to see stored high-light/memo list.

Setting



► User is allowed to set customized reading environment with setting.

- Press setting menu() to enter setting menu list.
- 와이파이 설정 : connect or disconnect WiFi.
- 언어 설정 : choose out of Korean / English.
- 스크린세이버설정 : choose time interval to enter sleep mode.
- 초기 화면 설정 : choose the first screen out '내서재' or '전자도서관'.
- 잔상 제거 설정 : choose interval of refresh by page.
- 조명 설정 : adjust brightness of light.
- 단말기 관리 : The device is allowed to be upgraded with the latest FW.

Warranty

- KEPH provides one-year limited warranty according to the notice of Fair Trade Commission, under the law of Korea government.
- To make a warranty claim, please contact your original point of purchase or call Customer Service at +82-2-6271-7791.
- Your claim gets approved within 7 days and customer service proceeds within 14 days.
- If device is not defective and you wish return it within 7 days, return device must be approved as new with no scratch or damage and it must include all packing items. If return device is not in that condition, it may be refused to accept and further charged for delivery and stocking fee.

► Coverage of limited warranty

- Within one year from retail purchase, limited warranty service is provided and covers defects under normal consumer use except damage or malfunctions caused by misuse, commercial use, negligence or other external causes.
- In case of commercial use, the device gets warranty for a half year.
- The warranty terms were in effect as of the date of your purchase. In case of no proof of retail purchase, actual term were in effect, 3 months after your device was manufactured.
- Battery part is particularly warranted for a half year.

► **Exception to limited warranty**

- If device is not defective, it may occur any expense regardless of warranty terms. Please refer to user's manual prior to your claim.
1. Cases of defects and malfunctions caused by misuse.
 - Caused by unauthorized tampering, modification and negligent use
 - Caused by unauthorized access to device's SW and attempt on rooting
 - Attempted to repair by unqualified personnel.
 - Being used unauthorized consumable items, accessories, such as non certificated cheap charger, or quick charger, battery and charging cable, etc.
 2. Else cases
 - Caused by natural disaster such as fire, flood and lightning etc.
 - Caused by dead of consumable parts such as battery, memory card, connectors and attached items etc.

CE NOTICE TO USERS:

Hereby, Korea Electronic Publishing Hub. declares that this CREMA-0610L-B is in compliance with the essential requirements and other relevant provisions of directive 1999/5/EC.

FCC NOTICE TO USERS:

This device complies with part 15 of the FCC rules.

Operation is subject to the following two conditions:

- (1) This device may not cause harmful interference and
- (2) This device must accept any interference received, including interference that may cause undesired operation.

IMPORTANT NOTE:

To comply with the FCC RF exposure compliance requirements, no change to the antenna or the device is permitted. Any change to the antenna or the device could result in the device exceeding the RF exposure requirements and void user's authority to operate the device.