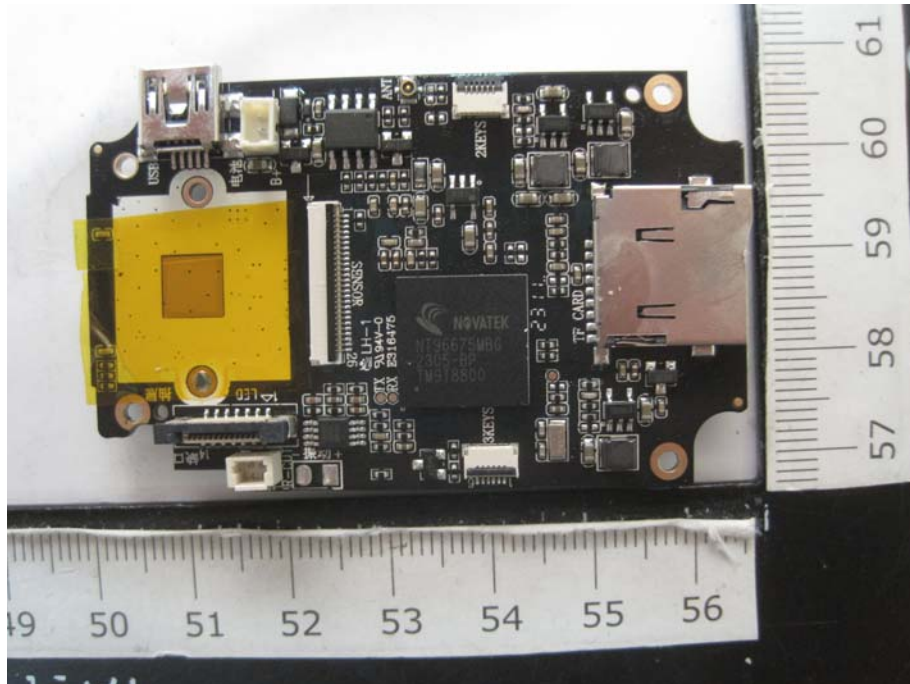




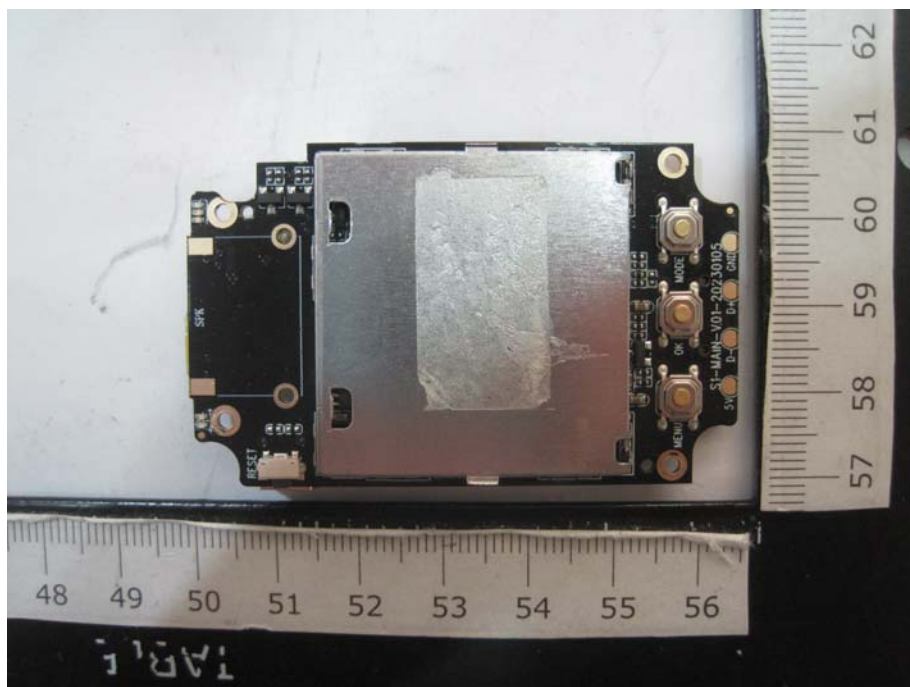
I/O Port of the EUT



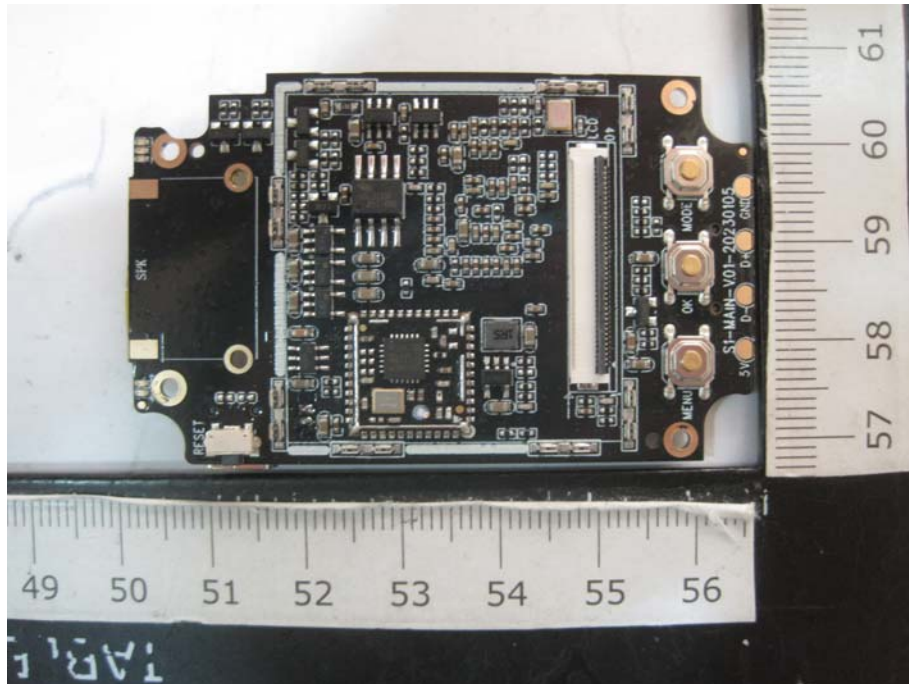
Inside View of the EUT



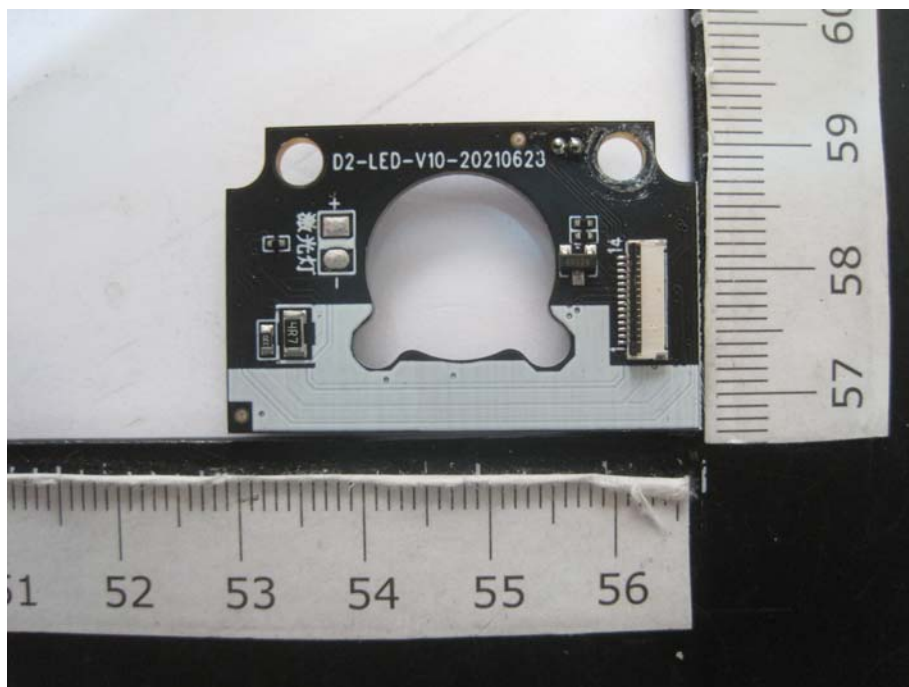
Front View of the PCB 1



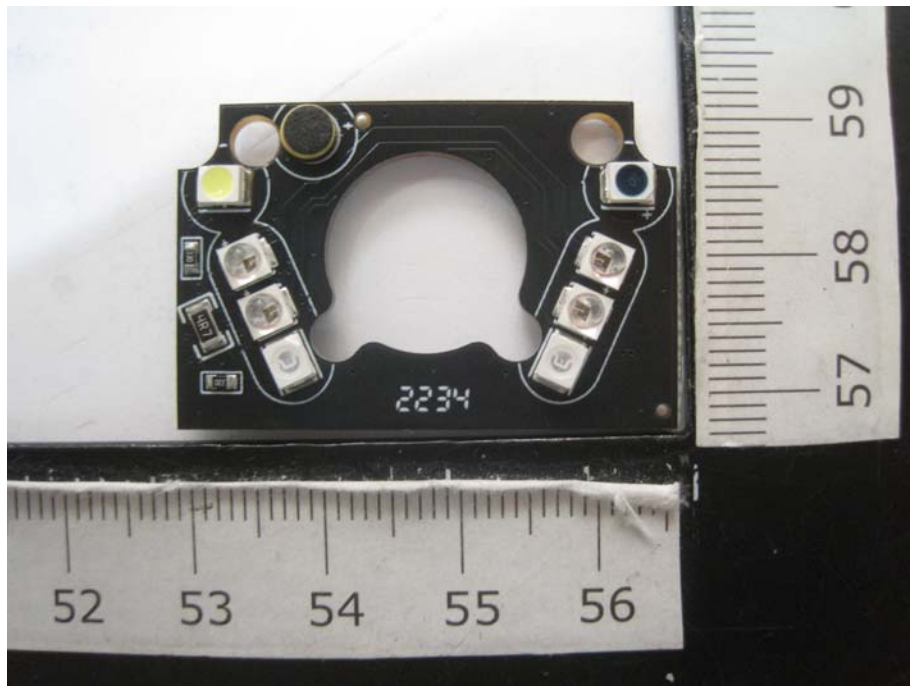
Rear View of the PCB 1



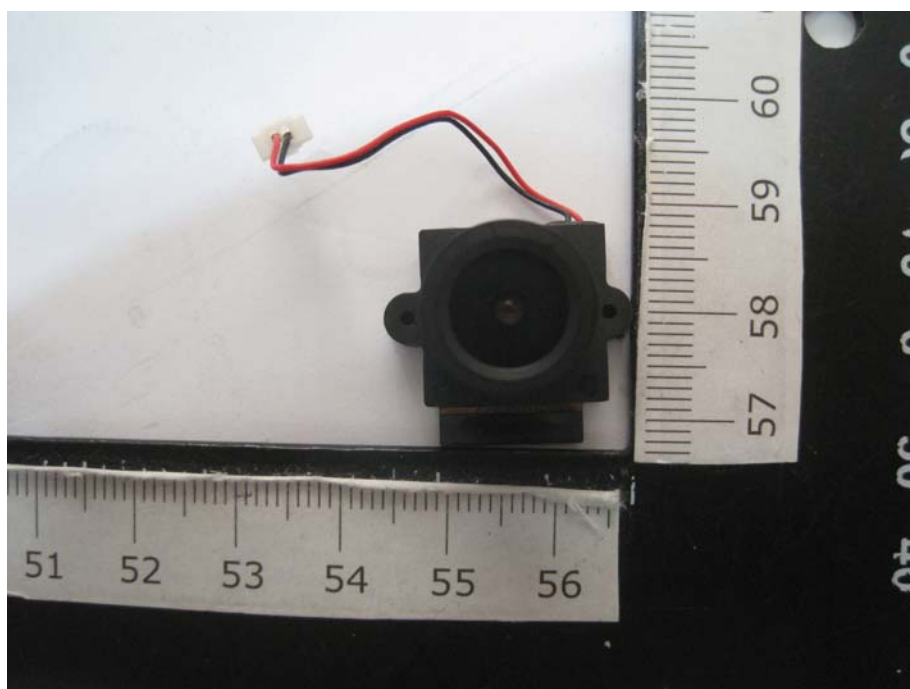
Rear View of the PCB 1-1



Front View of the PCB 2

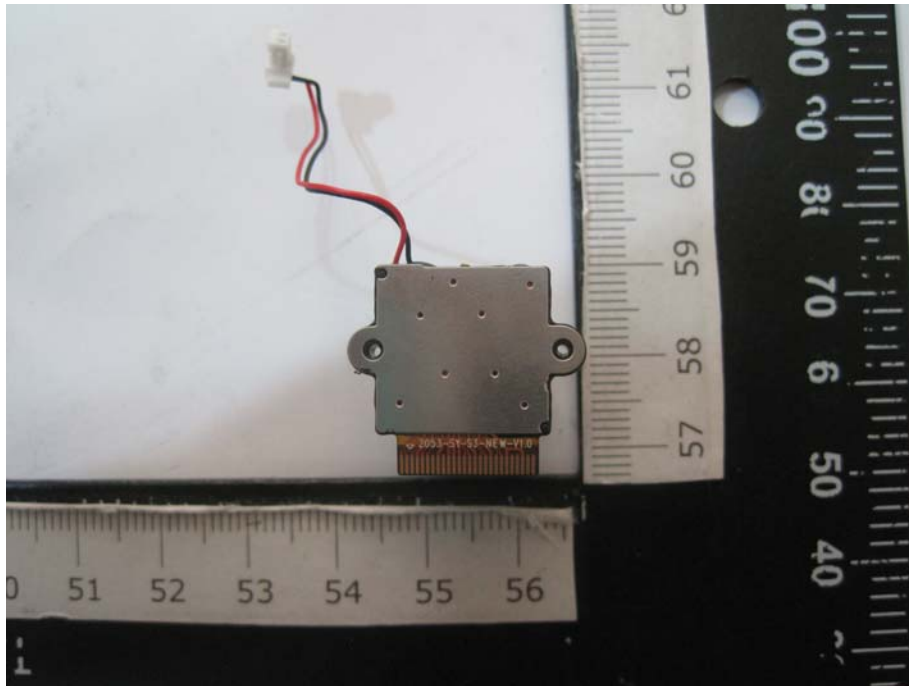


Rear View of the PCB 2

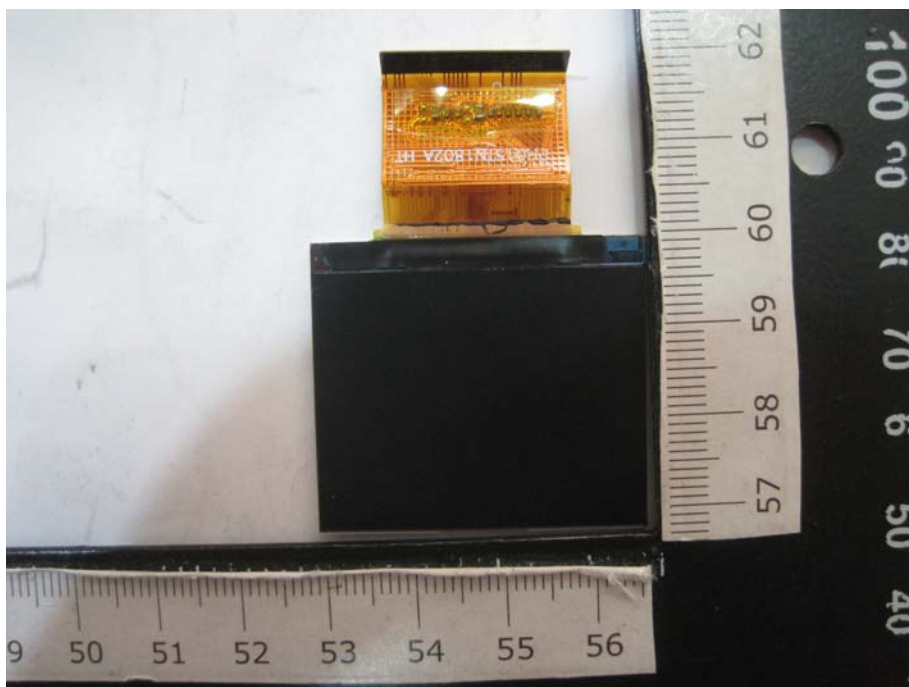


Front View of the CAM





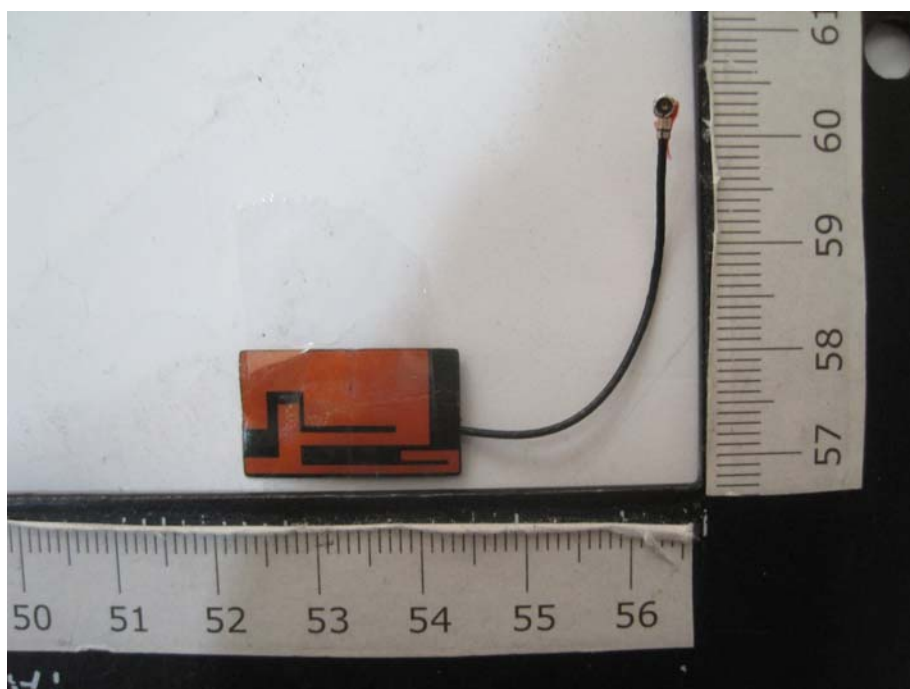
Rear View of the CAM



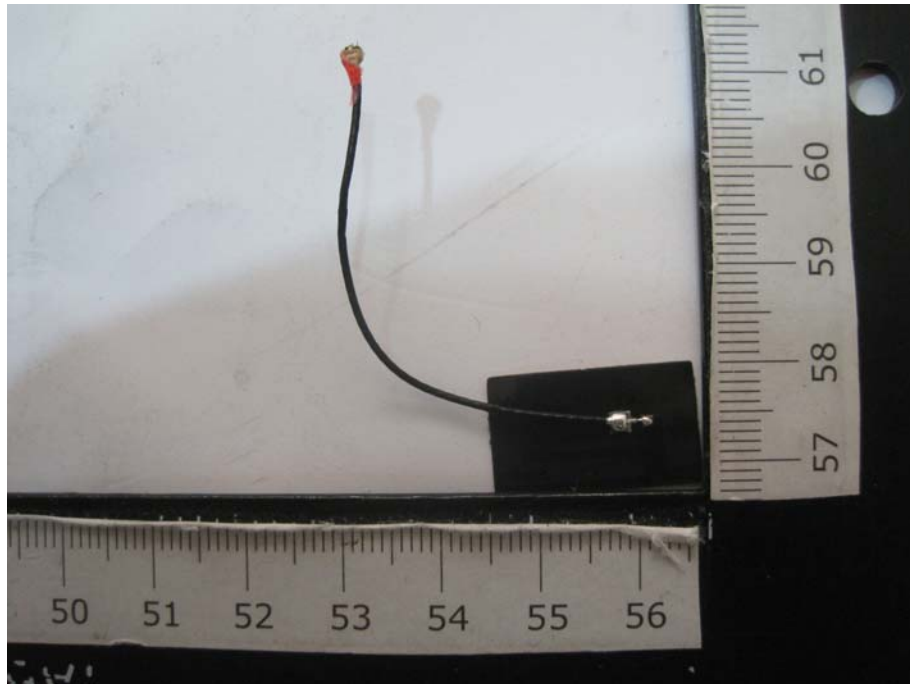
Front View of the Panel



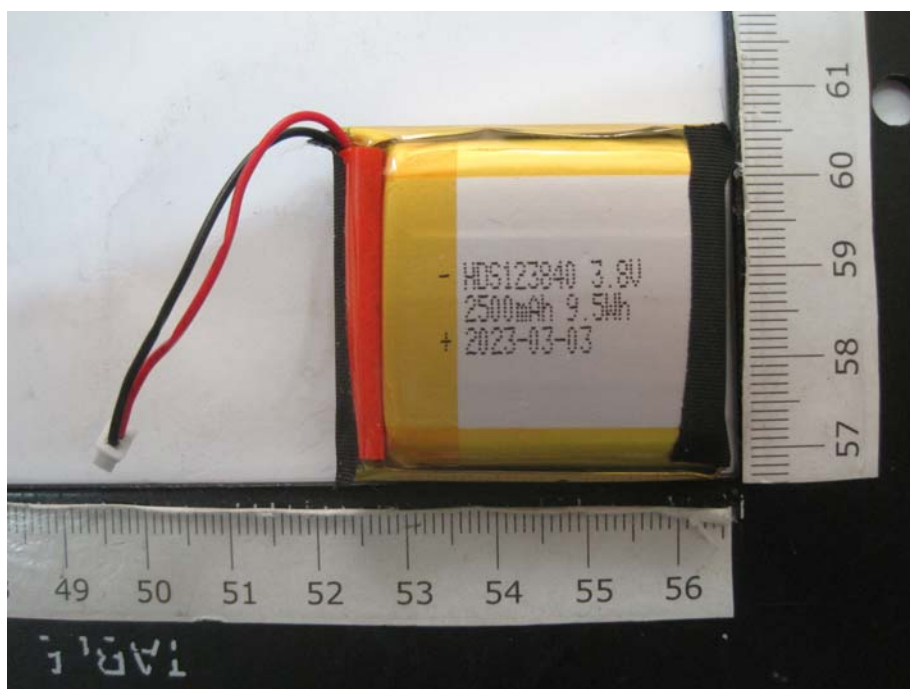
Rear View of the Panel



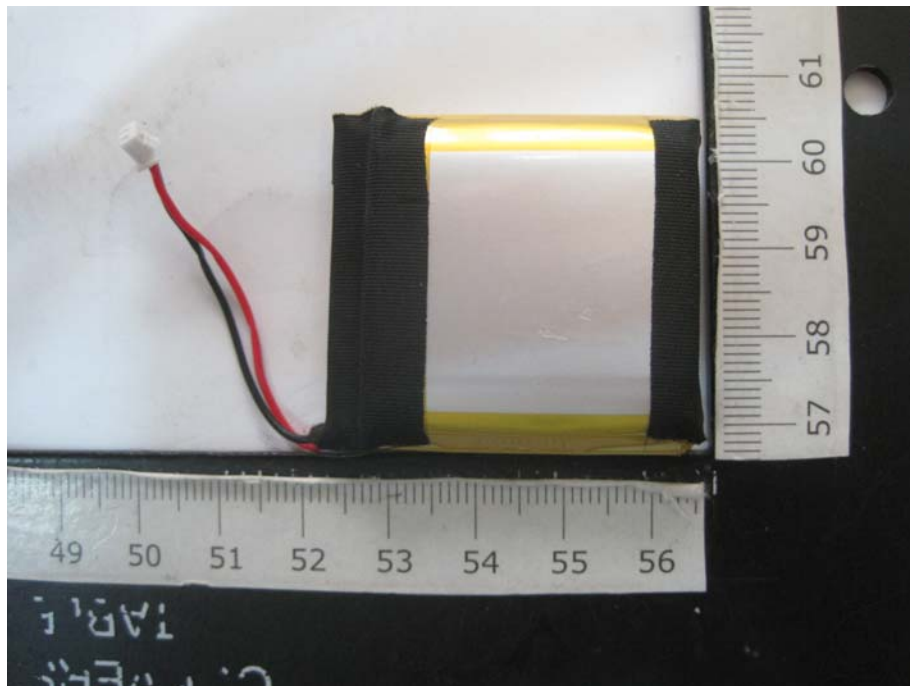
Front View of the FPC Antenna



Rear View of the FPC Antenna



Front View of the Battery

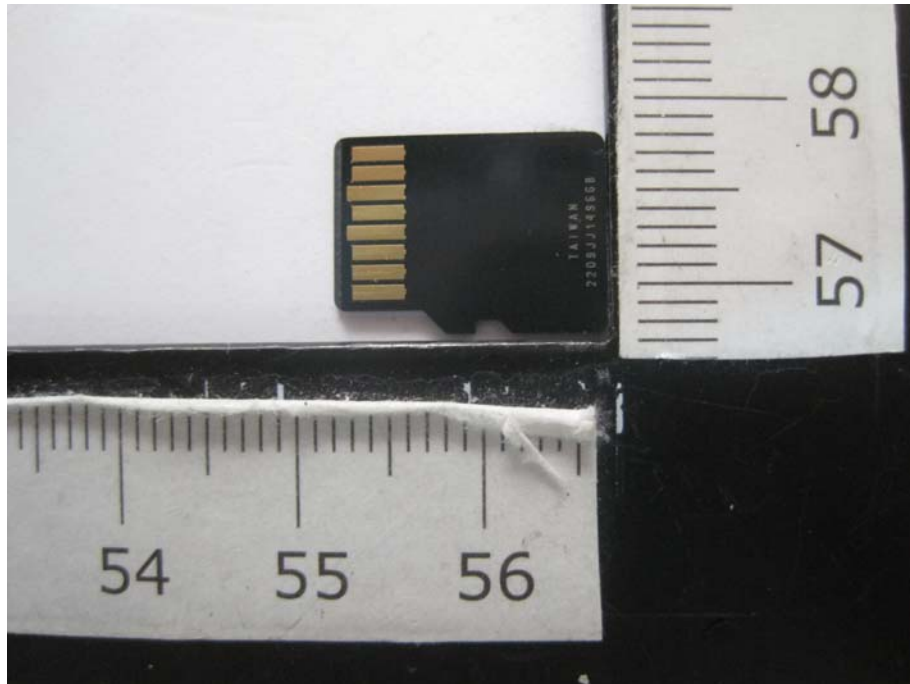


Rear View of the Battery

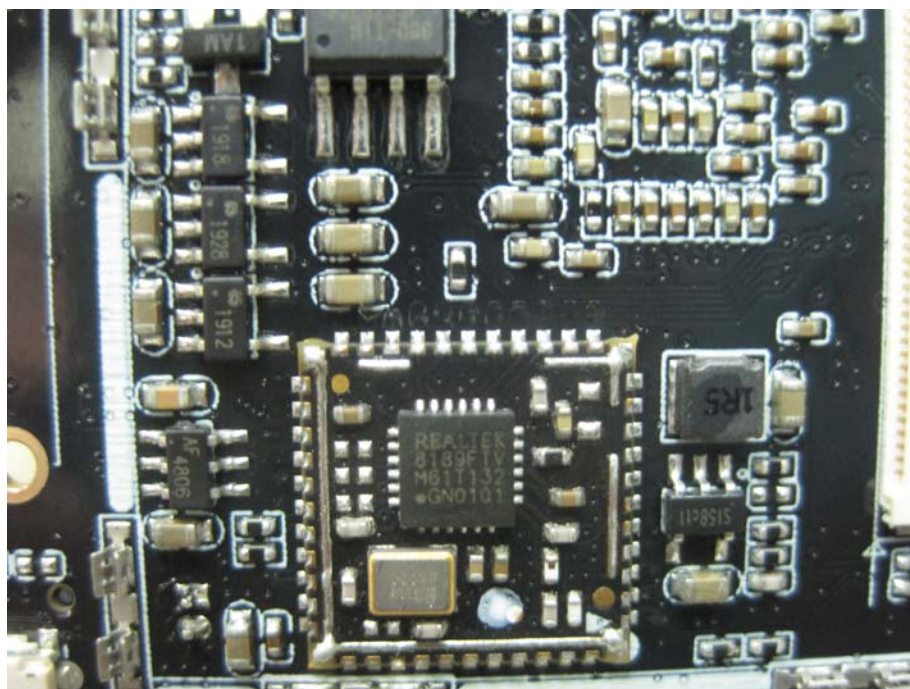


Front View of the SD Card





Rear View of the SD Card



Closer view of the Wi-Fi module