



Peninsula Phone Series Installation Guide

Models:

Analog cordless handset - HSH801

Analog cordless charging base - HSH802

Analog cordless 2-line telephone base - HSH803

Important safety instructions

When using your telephone equipment, basic safety precautions should always be followed to reduce the risk of fire, electric shock and injury, including the following:

1. This product should be installed by a qualified technician.
2. This product should only be connected to the host equipment and never directly to the network such as Public Switch Telephone Network (PSTN) or Plain Old Telephone Services (POTS).
3. Read and understand all instructions.
4. Follow all warnings and instructions marked on the product.
5. Unplug this product from the wall outlet before cleaning. Do not use liquid or aerosol cleaners. Use a damp cloth for cleaning.
6. Do not use this product near water such as near a bath tub, wash bowl, kitchen sink, laundry tub or swimming pool, or in a wet basement or shower.
7. Do not place this product on an unstable table, shelf, stand or other unstable surfaces.
8. Slots and openings in the back or bottom of the telephone base and handset are provided for ventilation. To protect them from overheating, these openings must not be blocked by placing the product on a soft surface such as a bed, sofa or rug. This product should never be placed near or over a radiator or heat register. This product should not be placed in any area where proper ventilation is not provided.
9. This product should be operated only from the type of power source indicated on the marking label. If you are not sure of the type of power supply on the premises, consult your dealer or local power company.
10. Do not allow anything to rest on the power cord. Do not install this product where the cord may be walked on.
11. Never push objects of any kind into this product through the slots in the telephone base or handset because they may touch dangerous voltage points or create a short circuit. Never spill liquid of any kind on the product.
12. To reduce the risk of electric shock, do not disassemble this product, but take it to an authorized service facility. Opening or removing parts of the telephone base or handset other than specified access doors may expose you to dangerous voltages or other risks. Incorrect reassembling can cause electric shock when the product is subsequently used.
13. Do not overload wall outlets and extension cords.
14. Unplug this product from the wall outlet and refer servicing to an authorized service facility under the following conditions:
 - A. When the power supply cord or plug is damaged or frayed.
 - B. If liquid has been spilled onto the product.
 - C. If the product has been exposed to rain or water.
 - D. If the product does not operate normally by following the operating instructions. Adjust only those controls that are covered by the operation instructions. Improper adjustment of other controls may result in damage and often requires extensive work by an authorized technician to restore the product to normal operation.
 - E. If the product has been dropped and the telephone base and/or handset has been damaged.
 - F. If the product exhibits a distinct change in performance.
15. Avoid using a telephone (other than cordless) during an electrical storm. There is a remote risk of electric shock from lightning.
16. Do not use the telephone to report a gas leak in the vicinity of the leak. Under certain circumstances, a spark may be created when the adapter is plugged into the power outlet, or when the handset is replaced in its cradle. This is a common event associated with the closing of any electrical circuit. The user should not plug the phone into a power outlet, and should not put a charged handset into the cradle, if the phone is located in an environment containing concentrations of flammable or flame-supporting gases, unless there is adequate ventilation. A spark in such an environment could create a fire or explosion. Such environments might include: medical use of oxygen without adequate ventilation; industrial gases (cleaning solvents; gasoline vapors; etc.); a leak of natural gas; etc.
17. Only put the handset of your telephone next to your ear when it is in normal talk mode.
18. The power adapter is intended to be correctly oriented in a vertical or floor mount position. The prongs are not designed to hold the plug in place if it is plugged into a ceiling, under-the-table or cabinet outlet.
19. Use only the power cord and batteries indicated in this user guide. Do not dispose of batteries in a fire. They may explode. Check with local codes for possible special disposal instructions.
20. In wall mounting position, make sure to mount the telephone base on the wall by aligning the eyelets with the mounting studs of the wall plate. Then slide the telephone base down on both mounting studs until it locks into place. Refer to the full instructions in **Installation** in this user guide.
21. **CAUTION:** Keep small metallic objects such as pins and staples away from the handset receiver.
22. **CAUTION:** There may be a risk of explosion if a wrong type of handset battery is used (HSH801). Use only the supplied rechargeable battery or replacement battery pack (BT198555/BT298555).

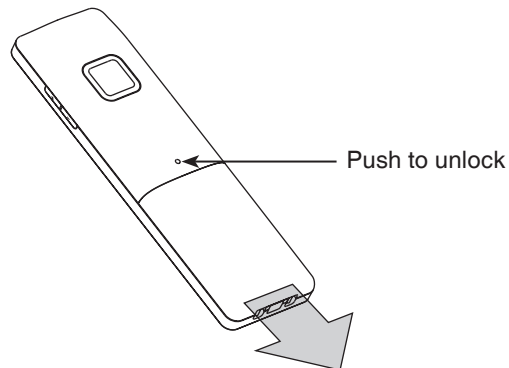
SAVE THESE INSTRUCTIONS

Installation

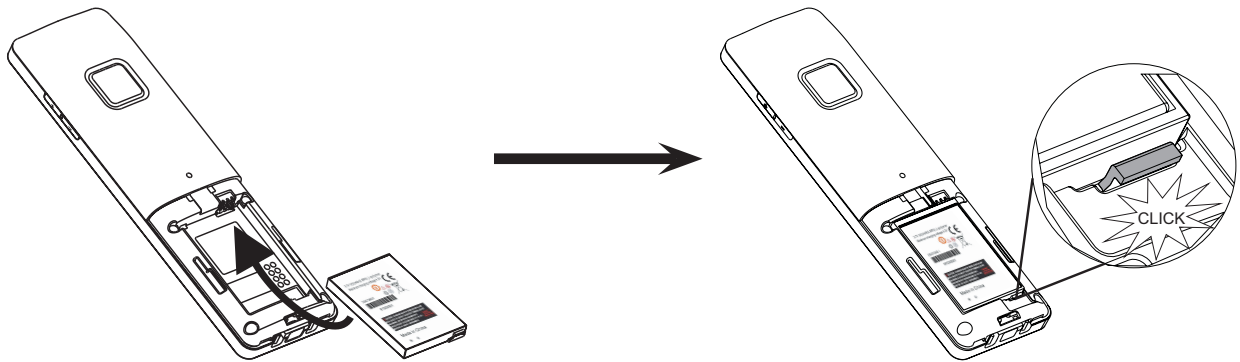
Cordless handset - HSH801

Handset battery installation

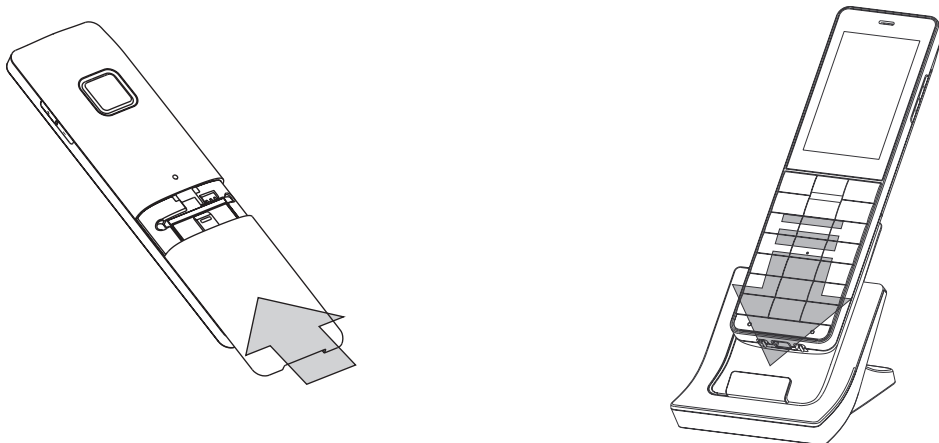
1. Push the hole at the back of the handset using a pen, then slide the battery compartment outwards.



2. Insert the small tabs of the battery into the slots inside the battery compartment. Make sure the metallic contact is correctly oriented as shown below. Push the battery into the battery compartment until it clicks securely into place.



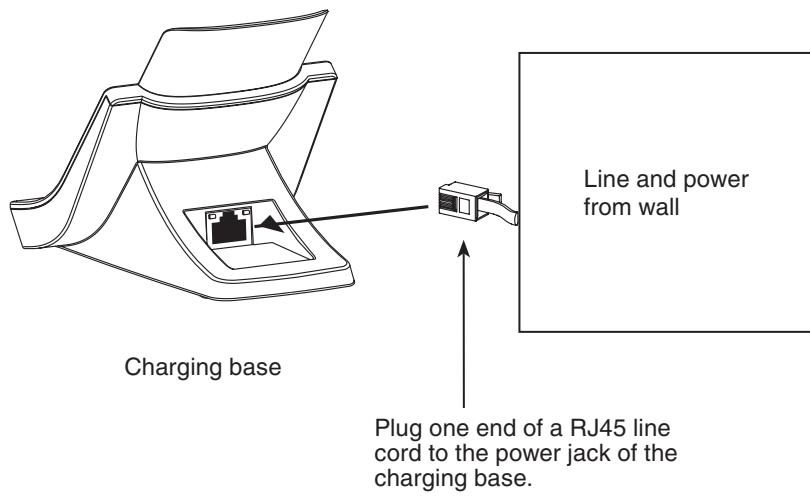
3. Align the battery compartment cover flat against the battery compartment, then slide it towards the center of the handset until it clicks into place.



Cordless charging base - HSH802

Charging base installation

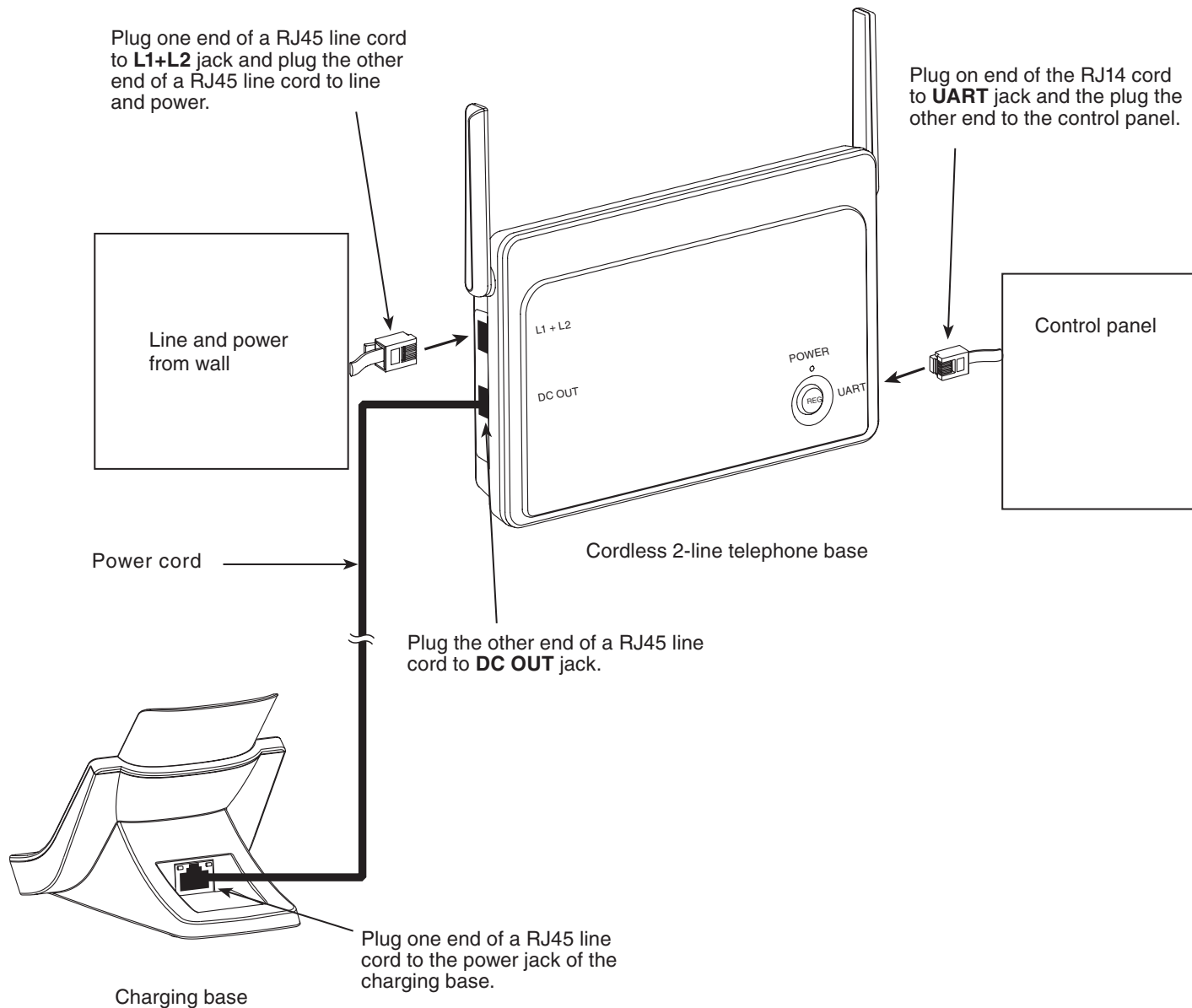
The charging stand is designed for desktop use. Install the charging stand as shown below.



Cordless 2-line telephone base - HSH803

Telephone base installaion

The telephone base is designed for desktop use. Install the telephone base as shown below.

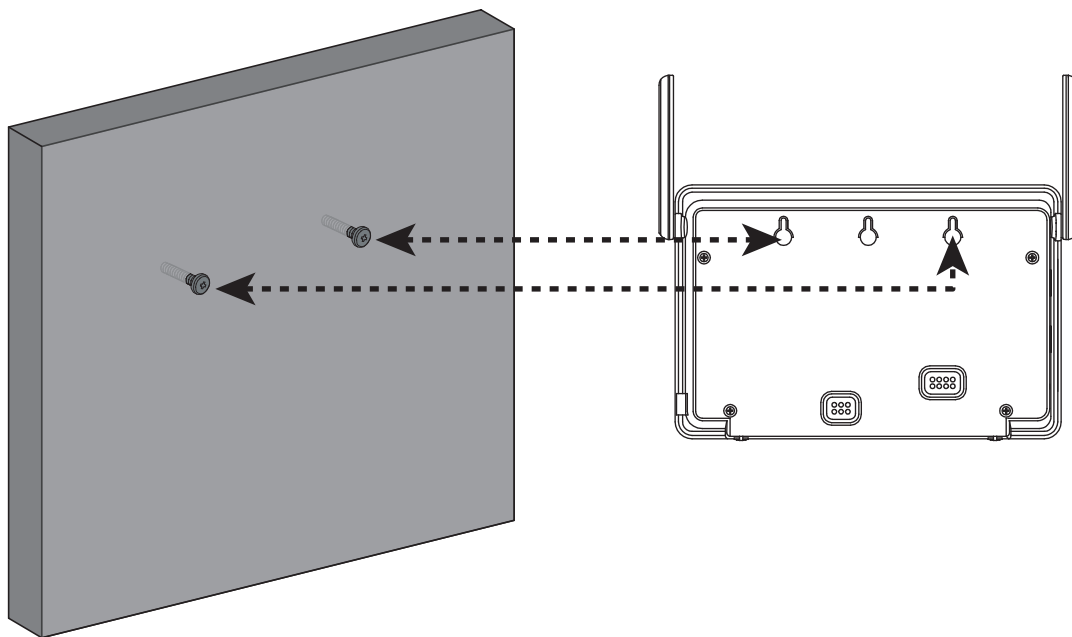


Note: The telephone base can support one charging base. It is optional for you to connect the charging base to the telephone base. Refer to **Charging base installation** on page 2 for another installation method for charging base.

Cordless 2-line telephone base - HSH803

Telephone base installation

The telephone base can be installed to the wall. Install the telephone base as shown below.



FCC, ACTA and IC regulations

FCC Part 15

This equipment has been tested and found to comply with the requirements for a Class B digital device under Part 15 of the Federal Communications Commission (FCC) rules. These requirements are intended to provide reasonable protection against harmful interference in a residential installation. This equipment generates, uses and can radiate radio frequency energy and, if not installed and used in accordance with the instructions, may cause harmful interference to radio communications. However, there is no guarantee that interference will not occur in a particular installation. If this equipment does cause harmful interference to radio or television reception, which can be determined by turning the equipment off and on, the user is encouraged to try to correct the interference by one or more of the following measures:

- Reorient or relocate the receiving antenna.
- Increase the separation between the equipment and receiver.
- Connect the equipment into an outlet on a circuit different from that to which the receiver is connected.
- Consult the dealer or an experienced radio/TV technician for help.

Changes or modifications to this equipment not expressly approved by the party responsible for compliance could void the user's authority to operate the equipment.

This device complies with Part 15 of the FCC rules. Operation is subject to the following two conditions: (1) this device may not cause harmful interference, and (2) this device must accept any interference received, including interference that may cause undesired operation.

For cordless telephone only - Privacy of communications may not be ensured when using this telephone.

For cordless telephone only - To ensure safety of users, the FCC has established criteria for the amount of radio frequency energy that can be safely absorbed by a user or bystander according to the intended usage of the product. This product has been tested and found to comply with the FCC criteria. The handset may be safely held against the ear of the user. The telephone base shall be installed and used such that parts of the user's body other than the hands are maintained at a distance of approximately 20 cm (8 inches) or more.

This Class B digital apparatus complies with Canadian requirement:
CAN ICES-3 (B)/NMB-3(B).

FCC Part 68 and ACTA

This equipment complies with Part 68 of the FCC rules and with technical requirements adopted by the Administrative Council for Terminal Attachments (ACTA). The label on the back or bottom of this equipment contains, among other things, a product identifier in the format US:AAAKXNANXXXX. This identifier must be provided to your telephone service provider upon request.

The plug and jack used to connect this equipment to premises wiring and the telephone network must comply with applicable Part 68 rules and technical requirements adopted by ACTA. A compliant telephone cord and modular plug is provided with this product. It is designed to be connected to a compatible modular jack that is also compliant. An RJ11 jack should normally be used for connecting to a single line and an RJ14 jack for two lines. See the installation instructions in the user's manual.

The Ringer Equivalence Number (REN) is used to determine how many devices you may connect to your telephone line and still have them ring when you are called. The REN for this product is encoded as the 6th and 7th characters following the US: in the product identifier (e.g., if ## is 03, the REN is 0.3). In most, but not all areas, the sum of all RENs should be five (5.0) or less. For more information, please contact your telephone service provider.

This equipment may not be used with Party Lines. If you have specially wired alarm dialing equipment connected to your telephone line, ensure the connection of this equipment does not disable your alarm equipment. If you have questions about what will disable alarm equipment, consult your telephone service provider or a qualified installer.

If this equipment is malfunctioning, it must be unplugged from the modular jack until the problem has been corrected. Repairs to this telephone equipment can only be made by the manufacturer or its authorized agents. For repair procedures, contact your local distributor.

If this equipment is causing harm to the telephone network, your telephone service provider may temporarily discontinue your telephone service. Your telephone service provider is required to notify you before interrupting service. If advance notice is not practical, you will be notified as soon as possible. You will be given the opportunity to correct the problem and your telephone service provider is required to inform you of your right to file a complaint with the FCC. Your telephone service provider may make changes in its facilities, equipment, operation, or procedures that could affect the proper functioning of this product. Your telephone service provider is required to notify you if such changes are planned.

If this product is equipped with a corded or cordless handset, it is hearing aid compatible.

If this product has memory dialing locations, you may choose to store emergency telephone numbers (e.g., police, fire, medical) in these locations. If you do store or test emergency numbers, please:

Remain on the line and briefly explain the reason for the call before hanging up.

Perform such activities in off-peak hours, such as early morning or late evening.

When the adjunct is used with a leased system, permission of the owner of the equipment must be obtained for connection of the adjunct because modification of the host system is often required.

This product can only be connected to the host equipment and never directly to the network.

Industry Canada

Operation is subject to the following two conditions: (1) this device may not cause harmful interference, and (2) this device must accept any interference, including interference that may cause undesired operation.

The term "IC:" before the certification/registration number only signifies that the Industry Canada technical specifications were met.

This product meets the applicable Industry Canada technical specifications.

Technical specifications

Analog cordless 2-line - HSH801(Handset) & HSH803(Telephone base)

Frequency Control	Crystal controlled PLL synthesizer
Transmit frequency	Handset: 1921.536-1928.448 MHz Telephone base: 1921.536-1928.448 MHz
Channels	5
Nominal effective range	Maximum power allowed by FCC and IC. Actual operating range may vary according to environmental conditions at the time of use.
Power requirements	Handset: 3.7V Li-polymer Telephone base: 12V DC @1000mA
Message waiting signal	Steady/periodic high voltage pulse, periodic low voltage pulse, reverse polarity, FSK, Siemens and/or Panasonic
Size	Telephone base: 8.43 x 9.84 x 1.57 in (214 x 250 x 40 mm)

Analog cordless charging base - HSH802

Power requirement	12V DC @1000mA
Size	4.95 x 3.15 x 3.42 in (125.7 x 80 x 86.85mm)

VTECH TELECOMMUNICATIONS LTD.

A member of THE VTECH GROUP OF COMPANIES.

Distributed in the U.S.A. by VTech Communications, Inc., Beaverton, Oregon 97008.

Distributed in Canada by VTech Technologies Canada Ltd., Richmond, B.C. V6W 1L5.

VTech is the registered trademark of VTech Holdings Limited.

Copyright © 2013 for VTECH TELECOMMUNICATIONS LTD.

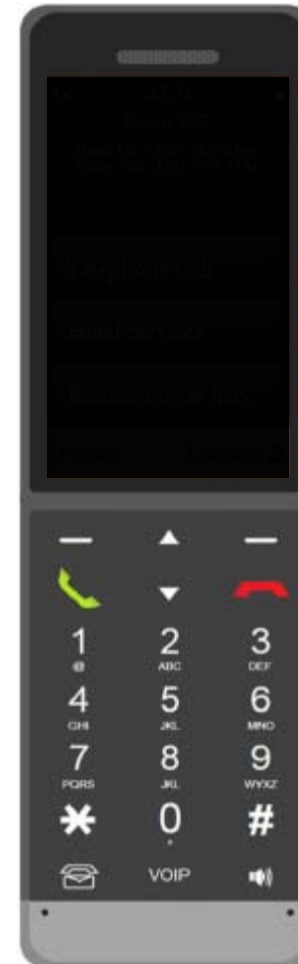
All rights reserved. Printed in China.

The Peninsula DECT Phone

(with Touch Screen) Function Flow

Home Screens

Telephone Call, Hotel Services, Restaurants & Bars, Privacy & Language Setting



Remark:

On the HOME screen there are include :

- Room No (programmed)
- Hotel Tel No (preset)
- Room Fax No (interface from Opera via TC3 / ESD)

***for the room is not check in the Room Fax No will displayed General Fax No.**

Screen Attributes:

The touch screen will dim out every **3 minutes** for each following stages:

From 100% → 50%

From 50% → 25%

From 25% → OFF

***take 9 minutes before the screen completely go OFF either on the docking station or not.**

The Dect Phone have **no** movement / proximity sensor, however when the Dect Phone pull out from the docking the screen will turn 100% on.

***But if the Dect Phone screen off and not plug into the docking station, the guests need to press any hard key to wake up the screen / phone.**

Telephone Call

(Room to Room via **Short-Cut Key**)



Remark:

The Dect Phone will **automatically add prefix** for the following telephone call:

- Room to Room
- Local Call
- International Call
- VOIP

The guest can delete the phone number if made a mistake, but **the prefix cannot be "deleted"**.

Phone line only occupied when the guest press the **green "CALL"** button.

***Voice Mail will call out automatically**

Telephone Call

(International Call via **Short-Cut Key**)



Remark:

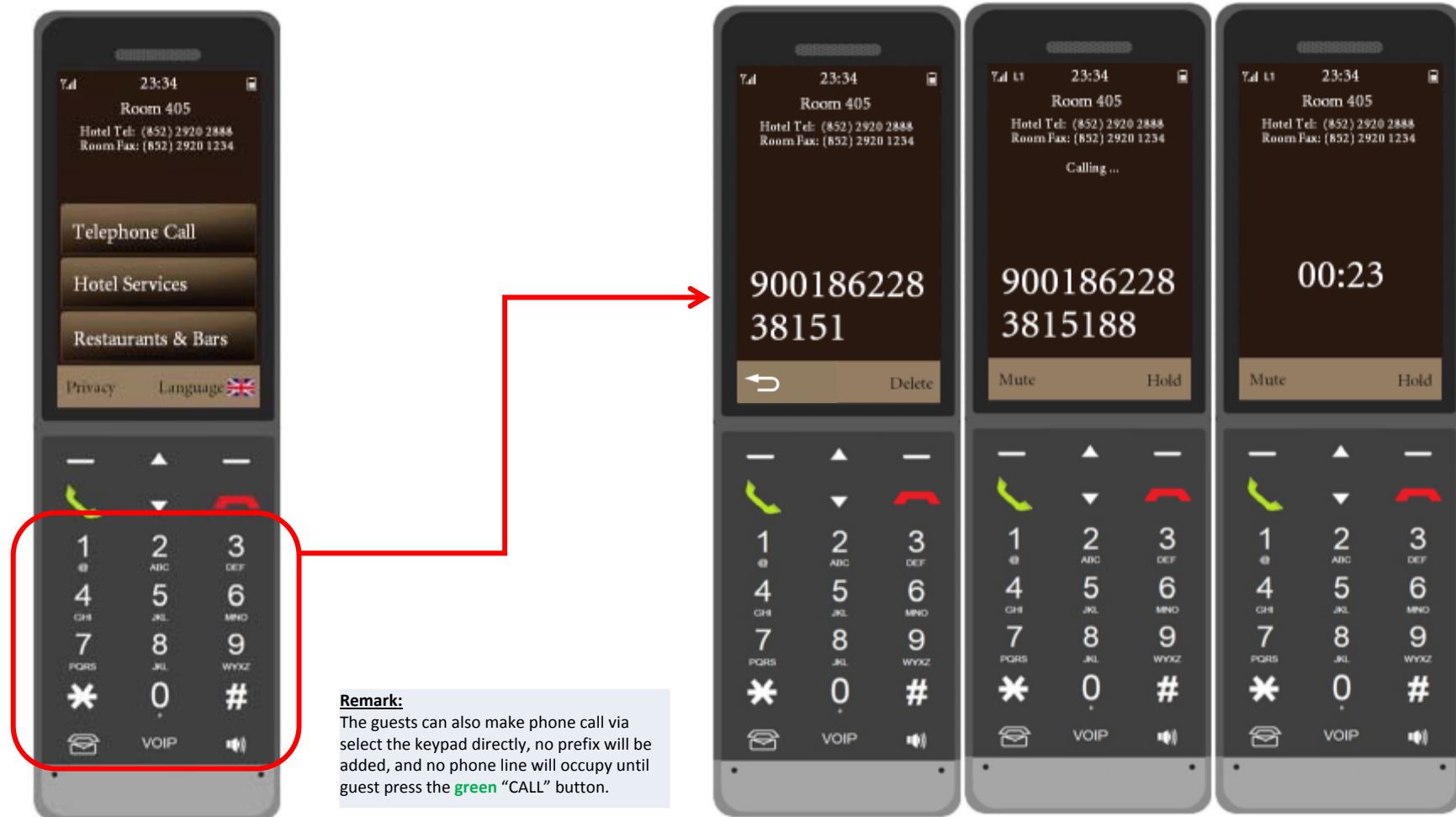
The Dect Phone will **automatically add prefix** for International Call, same for Local Call, VOIP.

Guest can delete the phone number if made a typo, however the prefix **cannot** be "deleted".

Again phone line only occupied when the guest press the **green** "CALL" button except Voice Mail.

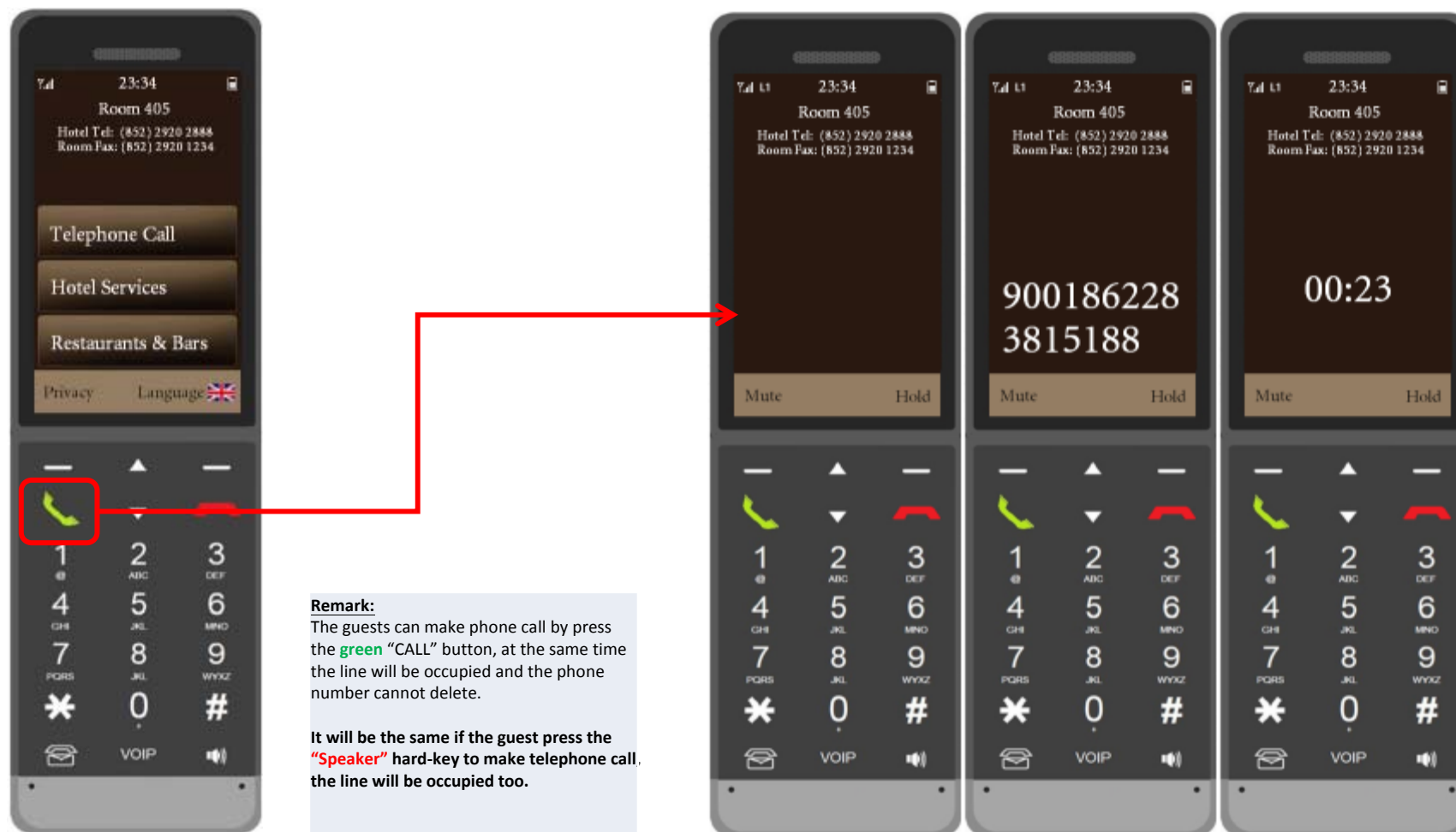
Telephone Call

(Make phone call via **keypad**)



Telephone Call

(Make phone call via **green** “Call” Button with **Dial Tone**)



Hotel Services

(example: make phone call to operator)



Remark:

All Hotel Services calls are pre-set and it will **automatically call out and connect**. The guest is **not** request to press the green "call" button.

Display Sequence: confirmed by PHK

- Bell Service
- Concierge
- Housekeeping
- Front Desk
- Room Service
- Operator
- Transportation
- Laundry
- The Peninsula Spa

Restaurants & Bars

(example: make a phone call to Gaddi's)



Remark:

All Restaurants & Bars calls are pre-set and it will **automatically call out and connect**. The guest is **not** request to press the **green** "call" button.

Display Sequence: confirmed by PHK

- Felix
- Gaddi's
- Chesa
- The Verandah
- Spring Moon
- Imasa
- The Lobby
- The Bar
- Salon de Ning

Phone Privacy

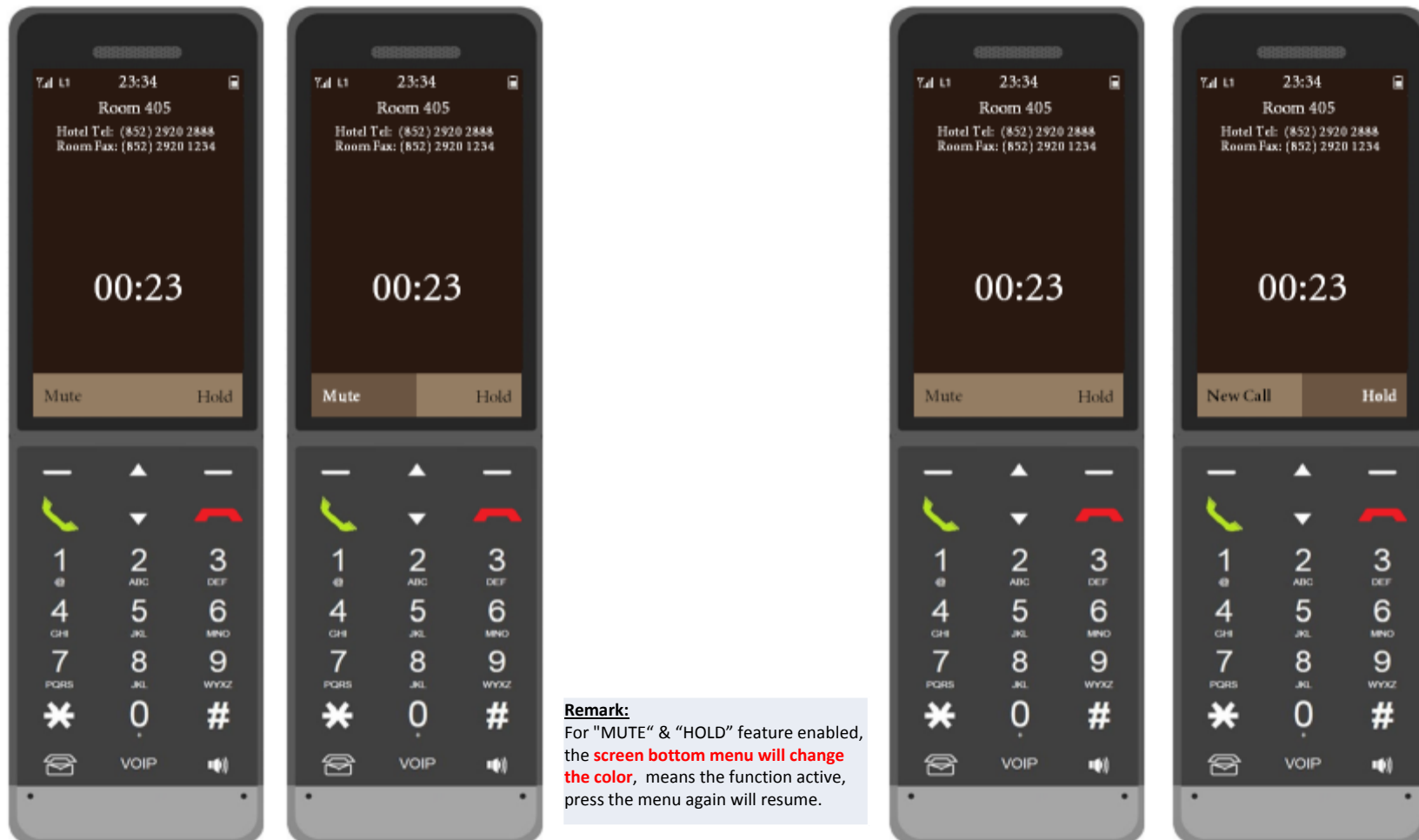
(Block & Unblock)



Remark:

Guest can enable Phone Privacy, a confirmation message will prompt to the guest. When it is confirmed, an “**Phone Privacy Enabled**” will display on the screen until it release... also for release the privacy another message will prompt to the guest to unblock the calls.

Mute & Hold



Language Selection

(English, Traditional Chinese, Simplified Chinese, Japanese & French for **PHK**)



Remark:

Guest can either press the screen / hard-key to change the phone language.

***For PHK the languages available to select are:**

- English
- Traditional Chinese
- Simplified Chinese
- Japanese &
- French

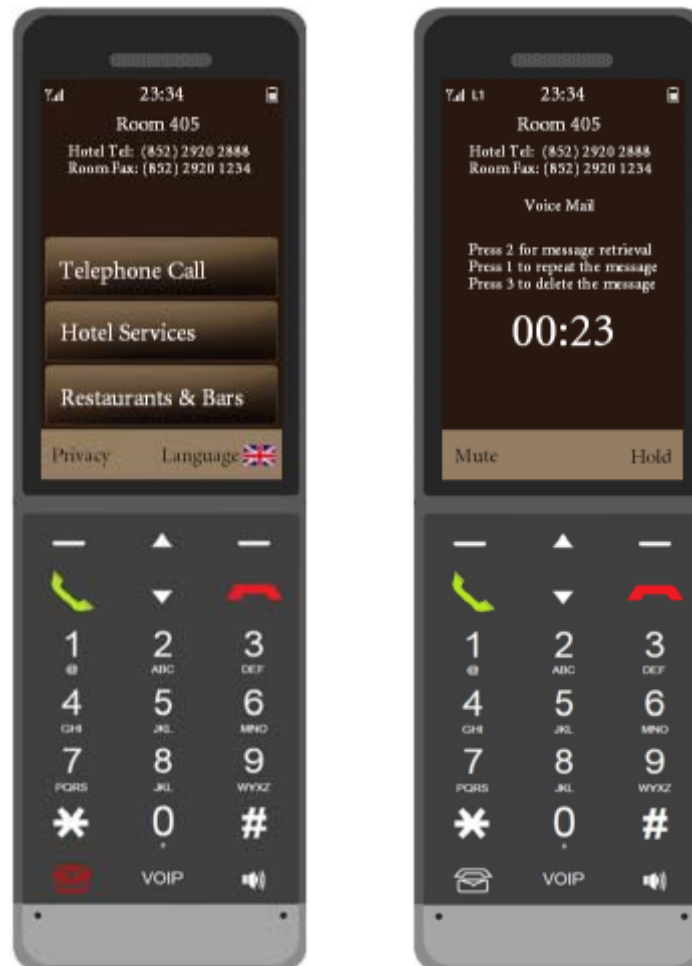
***Feedback from Directors review to include the "Flag" icon in case some guests cannot read the language on default screen.**

***HSH standard languages total are 11 and they include:**

- English
- Traditional Chinese
- Simplified Chinese
- Japanese
- French
- Russian
- Korean
- German
- Spanish
- Portuguese
- Arabic

New Voice Mail

(with voice mail instructions)



Remark:

For new voice mail, the voice mail hard-key will be changed to **red color & flash**. The guest can press "Voice Mail" hard-key, it will call voice mail box directly.

Once the call is connected, the voice mail instruction will show on the screen.

Volume Control

(Ringer & Speaker)



Remark:

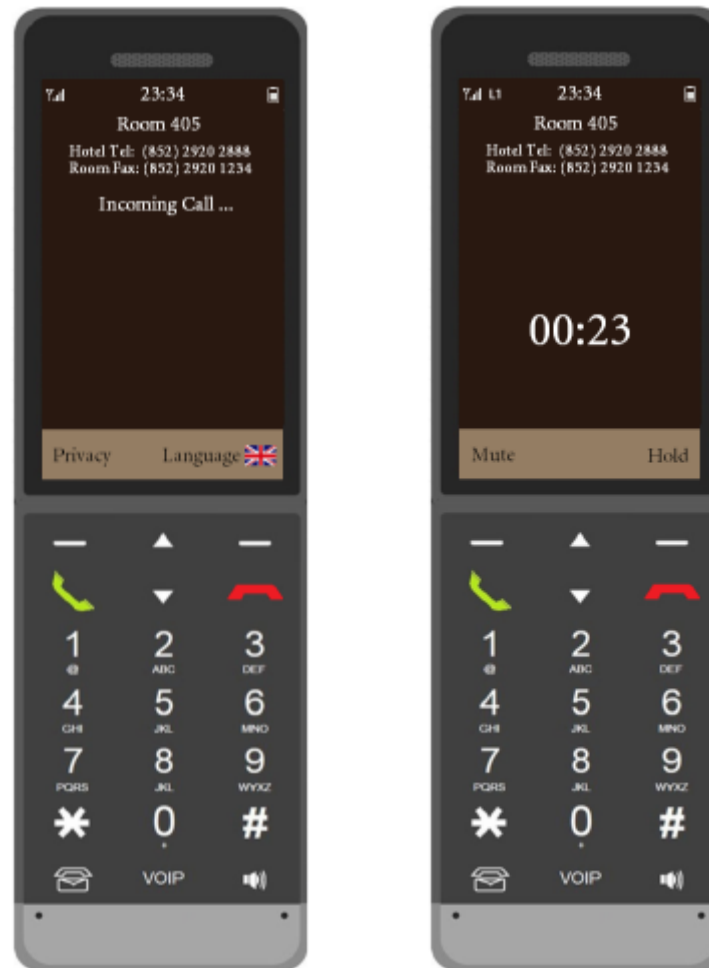
The volume control key will control the volume to **BOTH** Phone Ringer & Phone Speaker.

Also an animate icons display on the phone status bar. There are 4 levels of volume control, 100%, 75%, 50% & 25%. ***it will never go silence**

***next time when the guest change the volume Control the Dect Phone will change base on the last volume level setting**

Incoming Call

(Room Audio will auto-mute and resume when call finish)

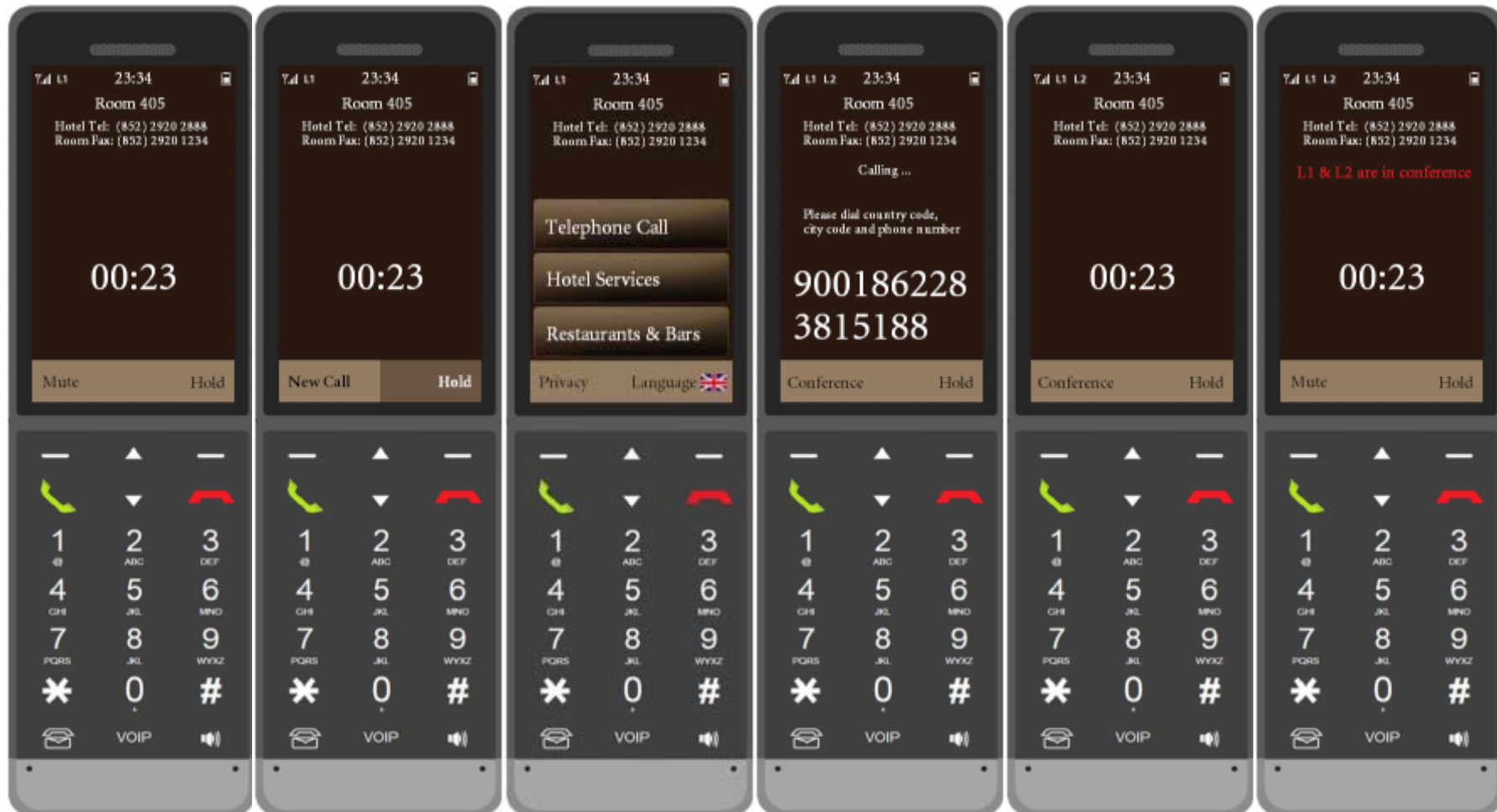


Remark:

For ALL incoming call, where the Room Audio is on, ESD systems will **automatically MUTE** the room audio, when **the call finish the Room Audio will be resumed.**

***also in a phone conversation when the guest place the Dect Phone back to Docking Station the Speaker will active automatically.**

Conference Call



Remark:

Conference call to be initiated from the same hand-set, one line must be occupied. The guest need to "Hold" the current line then select the "New Call" to start another call. At this time the L1 on the status bar require to be FLASH as indicated is on-hold, the new call can be dialed via the quick key / key pad. When the other line are connected the guest to press "Conference" to merge two calls. Together. *Guest also able to toggle between "Hold" between Line 1 and Line 2 but the held line the L? indicator to be FLASH...

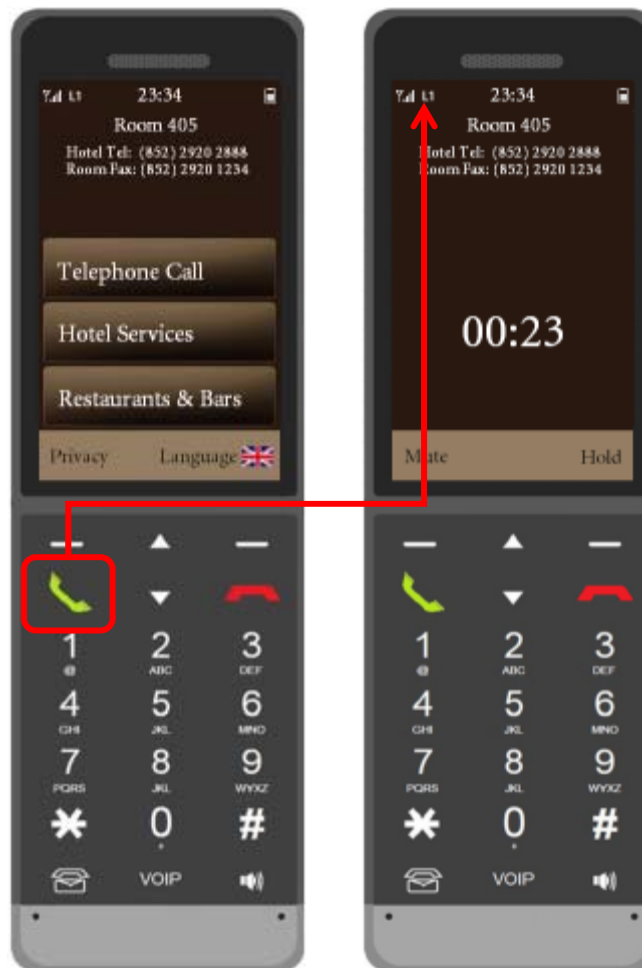
Join Line

(from another hand set)

1st hand set



Other hand set(s)



Remark:

When one phone line is in used, the another hand-set can join the same call by press the green "call" button automatically.

*If the guest want to make another Telephone Phone call who need to either via Quick-Keys or Keypad.

Get Line 2 with Line 1 in use

(from another hand set)

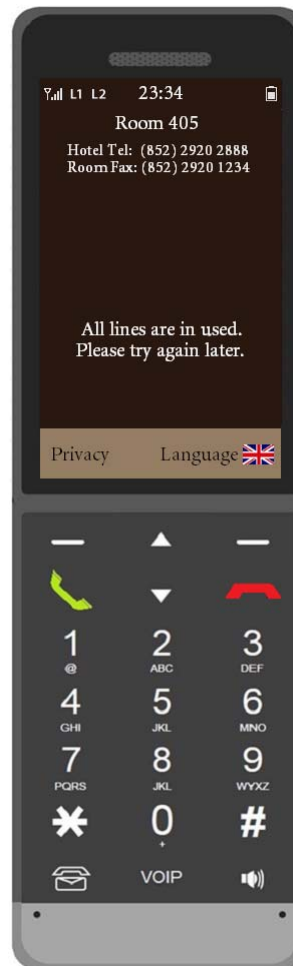


Remark: When one phone line is in use, the another hand-set can make phone call by press the "New Call" button.

* The guests can also make phone call via select the keypad directly, no prefix will be added, and no phone line will occupy until guest press the green "CALL" button.

All Lines Occupied

(the other hand sets not able to call out)



Remark:

When both phone lines are in used, the other hand-sets cannot make any phone call, except the Phone Privacy setting or change Language.

Also a message will be promoted to the guest saying "**All lines are in used. Please try again later.**"