


User Manual

PC Installation Tools

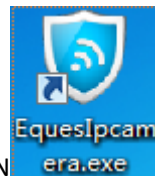


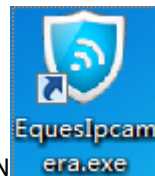
Double Click , setup it in PC as per instructions.

Open IP camera

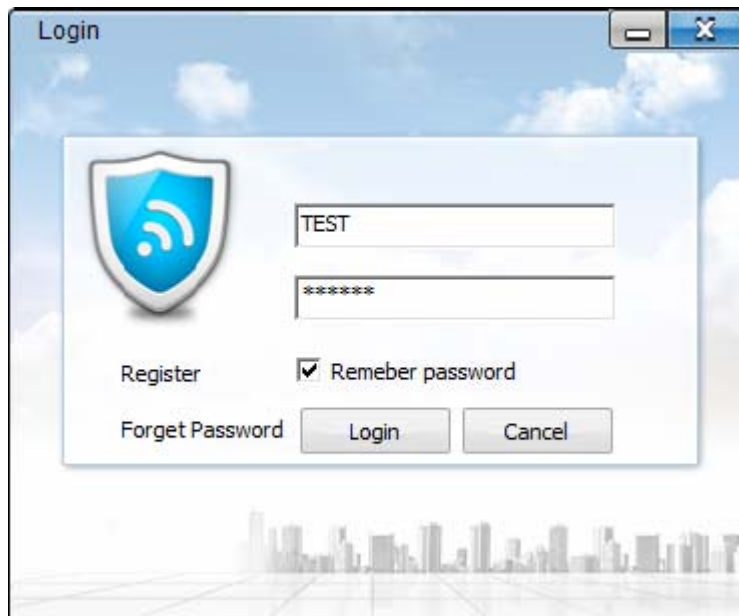
Insert power cord, press the “power” key on the back and LED indicator light on.

Operation



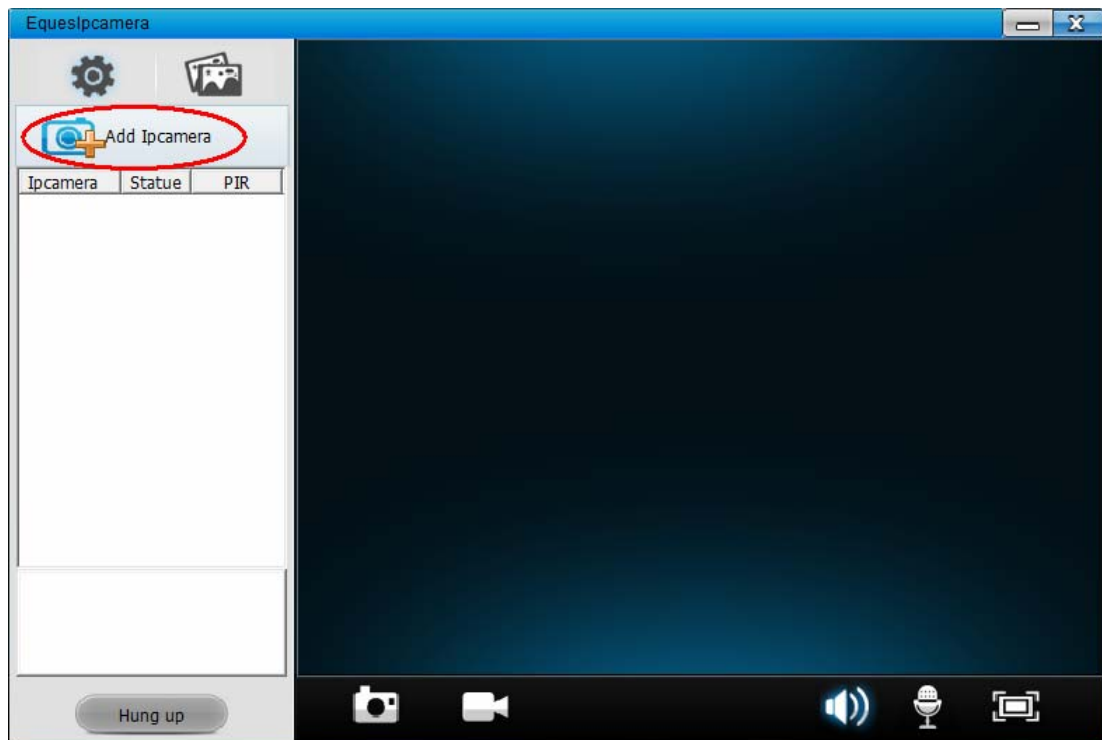
A) Double click the short cut ICON  on the PC desk to open the management platform.

B) Input Account and Code, e.g. TEST and 123456



Add camera

Click “Add camera”



Input WiFi SSID and code, click “ Create QR code ”

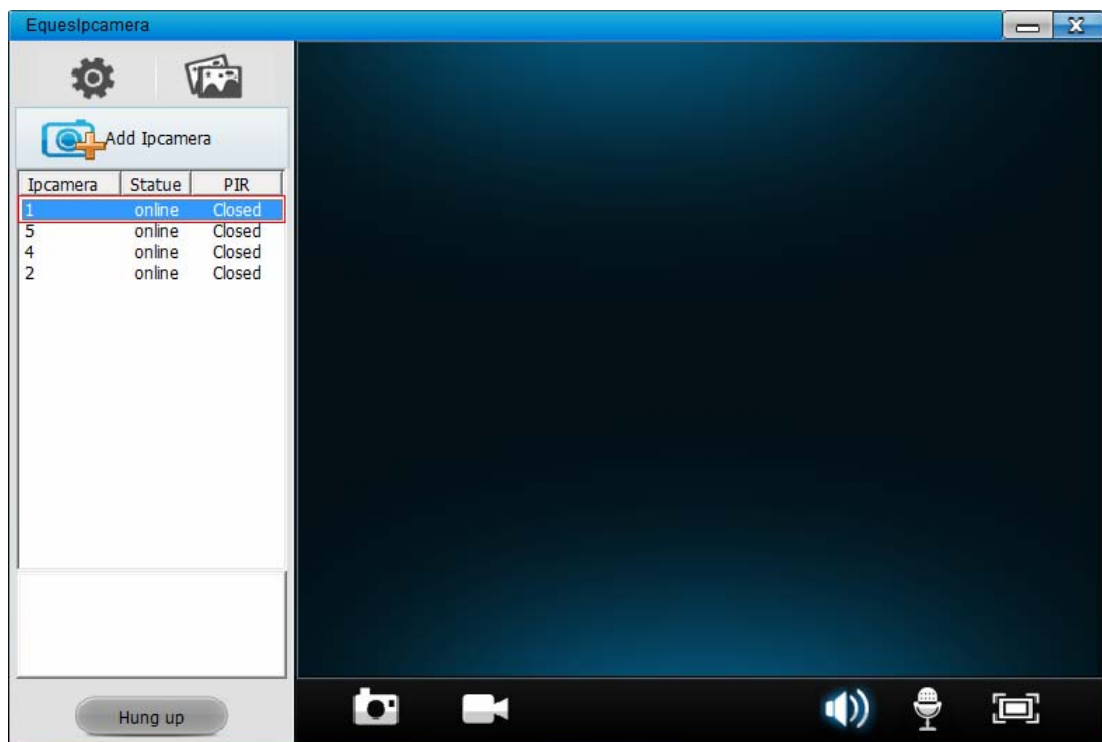
Notes: It is available only when the WiFi is connected with internet.



Long press the scan key (SET2), Keep the camera against the center of QR cord with around 20 to 30 cm distance to scan, according to the voice prompt.



Click the new device in the column as below

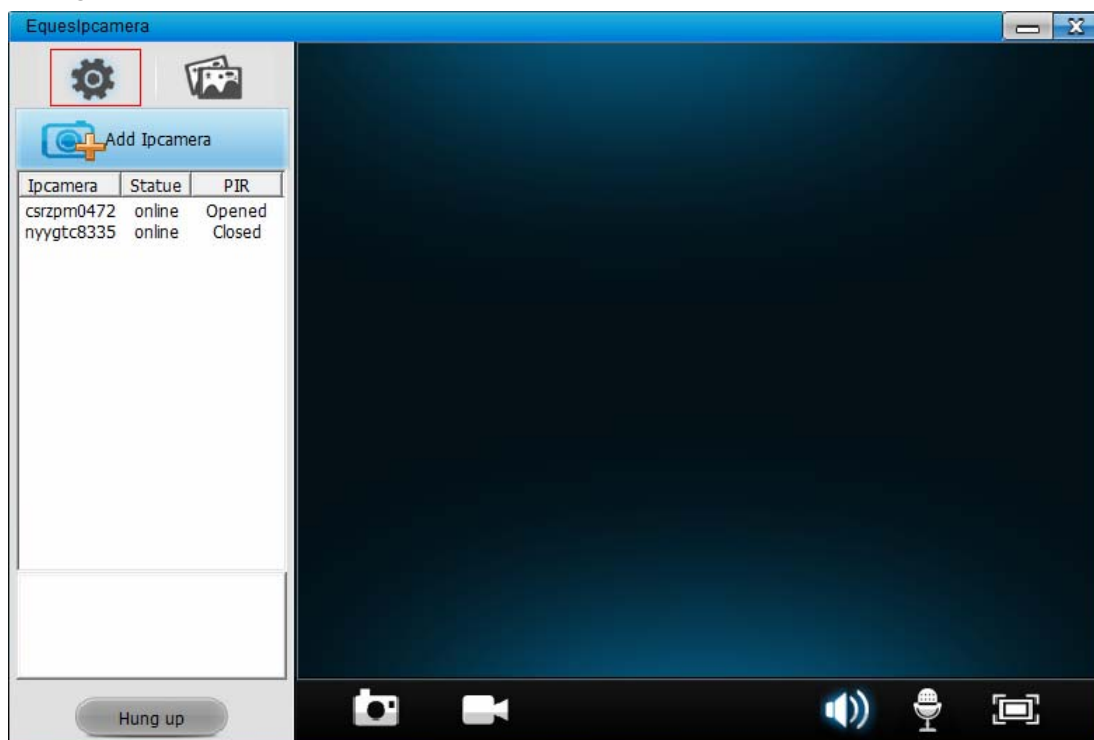


Operation

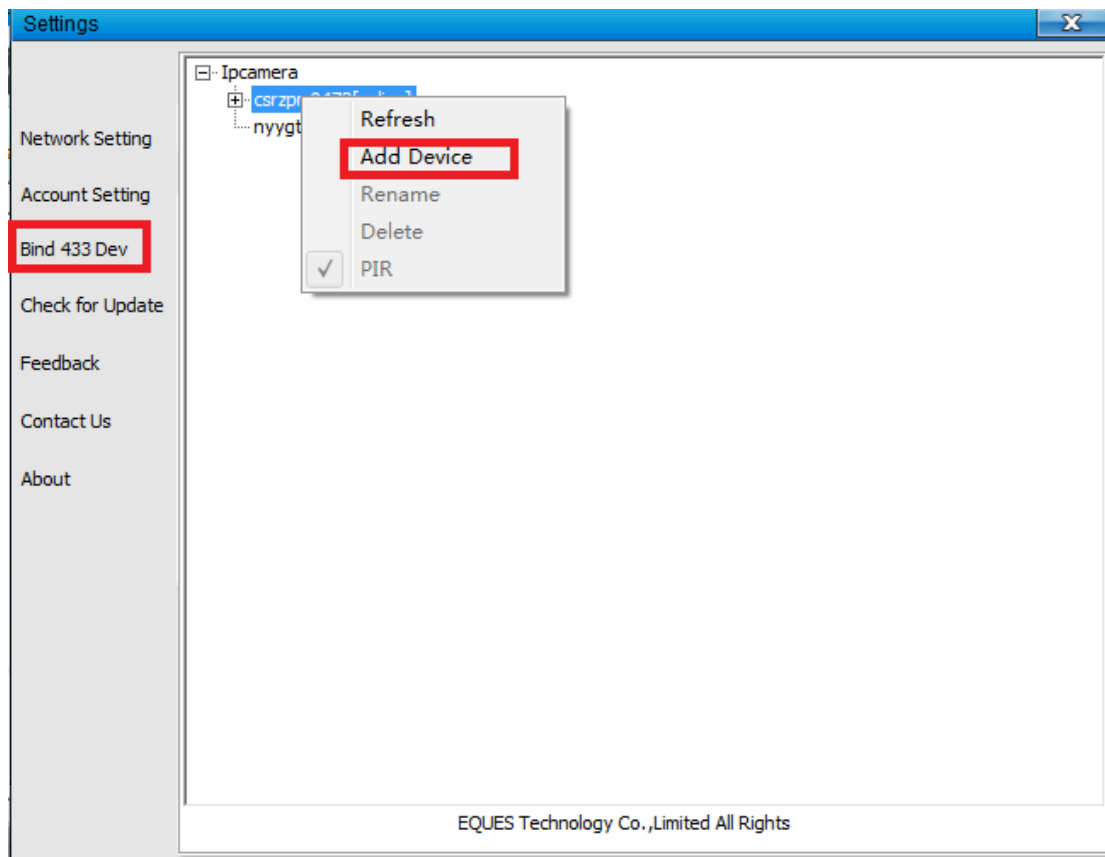
Double click the camera in the column to have a real-time view



Alarm Device Bind:
Settings



Please click "Bind 433 device", choose the IP camera and add device to bind the device as per voice prompt. Notes: the 433 device must be online.



FCC Warning Statement

Changes or modifications not expressly approved by the party responsible for compliance could void the user's authority to operate the equipment.

This equipment has been tested and found to comply with the limits for a Class B digital device, pursuant to Part 15 of the FCC Rules. These limits are designed to provide reasonable protection against harmful interference in a residential installation. This equipment generates uses and can radiate radio frequency energy and, if not installed and used in accordance with the instructions, may cause harmful interference to radio communications. However, there is no guarantee that interference will not occur in a particular installation. If this equipment does cause harmful interference to radio or television reception, which can be determined by turning the equipment off and on, the user is encouraged to try to correct the interference by one or more of the following measures:

- Reorient or relocate the receiving antenna.
- Increase the separation between the equipment and receiver.
- Connect the equipment into an outlet on a circuit different from that to which the receiver is connected.
- Consult the dealer or an experienced radio/TV technician for help

FCC Radiation Exposure Statement

The antennas used for this transmitter must be installed to provide a separation distance of at least 20 cm from all persons and must not be co-located or operating in conjunction with any other antenna or transmitter.