



# INSTRUCTION

# TABLE OF CONTENT

|   |    |
|---|----|
| UltraDash Z3+C .....                              | 01 |
| Precautions .....                                 | 02 |
| Product Specs .....                               | 03 |
| Package Contents.....                             | 04 |
| Product Features .....                            | 04 |
| Camera Parts & Control .....                      | 05 |
| In-vehicle Installation .....                     | 08 |
| On Screen Notifications.....                      | 18 |
| Video Mode.....                                   | 22 |
| Video Menu .....                                  | 23 |
| Setup Menu.....                                   | 25 |
| Playback Mode .....                               | 26 |
| Wireless Link & iQ Viewer ( iOS & Android ) ..... | 32 |
| iQ Viewer Instruction ( iOS & Android ) .....     | 38 |
| USB Storage ( Windows & Mac ) .....               | 44 |
| Firmware Update Instruction .....                 | 45 |
| iQ Player (Windows & Mac).....                    | 47 |
| Warranty.....                                     | 47 |
| Trouble Shooting.....                             | 48 |
| Appendix .....                                    | 51 |

Congratulations on the purchase of your new UltraDash Z3+C camera! We'd like to thank you for your purchase. We strive to bring you the highest quality products, allowing you to capture every memory. We know you'll love using your UltraDash! The following instructions are written for optimized use of your UltraDash Z3+C camera. Each of the default settings have been designed to achieve the highest quality video while maintaining peace of mind when the camera is on. It is not recommended you adjust the default settings.

## EASY TO USE

With new technology readily available, the creators of Cansonic have developed an easy to use camera for everyday use. UltraDash Z3+C allows its user to record files in 1, 3, or 5 minute lengths. These files are easy to download to your home desktop or personal laptop. In most instances, the video files are easily played on your mobile device. While most cameras traditionally use the entire capacity of the Micro SD card until it is removed, UltraDash automatically deletes the oldest file to create space for the new video.

### UltraDash Z3+C offers two modes:

1. **Video Mode:** Video mode will set to default when the camera is active.
2. **Playback Mode:** Users can view all previously recorded videos.

### FEATURES:

#### Automatic Start / Stop Technology:

Maintain full focus on the road! The vehicle's ignition will let the camera turn on while connected to your vehicle's 12V outlet or cigarette lighter socket. When the vehicle is turned off, the camera will automatically shut down.

UltraDash Z3+C lets users adjust camera settings to get the perfect shot. For a great video every time, here are a few tips from the designers:

1. Reduce the amount of sky in the picture. By adjusting the camera towards the road, the automatic exposure compensation will be focused on the road and not the light from the sky.
2. Position the camera in the center of the dash. If you place the camera behind the rearview mirror, you will avoid all distractions from the road.
3. Remove any objects that will obstruct your shot such as the protective lens cover. Clear vision will allow you to record everything in one shot.

## ADDITIONAL TIPS

### Full optimization of memory card:

1. Before removal of the memory card from UltraDash Z3+C, be sure to turn off the camera. Leaving the camera on while removing its memory card may lead to eased or corrupt files.
2. Format memory card by accessing setup menu, then choosing the format option. You will now be able to fully use all the memory power of your Micro SD card.
3. By reformatting your memory card every 2–3 weeks, your memory card will continue to be fully utilized. Only do this AFTER you've downloaded any files from the card to your computer, as formatting the card will remove all content.

## PRECAUTIONS

Please read the following instructions carefully. Proper Use of UltraDash Z3+C is necessary in order to avoid operational problems that may occur.

### WARNING:

DO NOT expose UltraDash Z3+C to moisture under any circumstance. The camera is NOT WATERPROOF and will become defective and may put the user at risk of electric shock or fire exposure.

DO NOT use UltraDash Z3+C for any illegal purpose or to infringe on another individual's rights. When audio is being recorded, we recommend you allow any and all persons near UltraDash Z3+C know that they are being recorded. You can disable the microphone on the camera.

### CAUTION:

Do not perform any activities or services with the device unless you are qualified to control the object. Misuse of UltraDash Z3+C may result in electric shock or fire exposure.

AVOID ANY uses of the camera that are not listed in the manual.

If your UltraDash Z3+C needs service repairs, please visit a qualified technician to perform the necessary repairs:

UltraDash Z3+C has had exposure to water (rain, all forms of water, ETC.)

UltraDash Z3+C operating system is not functioning properly

UltraDash Z3+C does not turn on properly

### Liquid Crystal Display (LCD)

UltraDash Z3+C is equipped with an LCD screen for easy viewing. The screen has a multi-layer complex component that contains nearly 600,000 pixels. The pixels the screen projects may fail as a result of: Defective Problems or Prolonged Exposure to the sun.

Product life may also be a cause for screen failure. One pixel is equivalent to 0.0001% of total screen exposure. One-pixel failure per year during the operational life of UltraDash Z3+C is standard and should not be cause for concern.

### Proper Use of UltraDash Z3+C

The following instructions are listed for exclusive use of UltraDash Z3+C.

Please read all instructions to prolong camera use and effectiveness.

- Remove packaging and ensure the windshield is clear of dirt and debris before you install your dash camera mount.
- Avoid any and all distractions in regards to technology, IT'S THE LAW.  
Any obstruction of drivers' view of the road may result in fines. Ensure UltraDash Z3+C is placed clear of your view of the road, as well as out of the way of airbags in the event of an accident.
- Disconnect UltraDash Z3+C adaptor when the vehicle is not in use. By doing so, you will avoid camera damage as well as hazards such as fires and electrocution.

- Avoid viewing the camera playback feature while operating a vehicle. It is illegal and may result in a fine or even death.
- Avoid adjusting the camera settings while driving. It is dangerous and illegal.

**OBEY THE LAW!**

## **Cleaning**

Proper maintenance of UltraDash Z3+C is essential to allow for full optimization of the camera. Maintenance suggestions are:

- Clean the device with a soft dry cloth. For tough dirt, please use a small quantity of water and a neutral detergent. Clean with a soft cloth.
- Avoid contact with UltraDash Z3+C lens as damage may be caused.
- When necessary, clean the lens carefully by using lens cleaning fluid and a soft cloth.

Google Maps mapping service, Android and Google Play are trademarks of Google LLC in the United States and other countries.

SanDisk is a registered trademark or trademark of Western Digital Corporation or its affiliates in the US and/or other countries.

Windows is a registered trademark of Microsoft Corporation in the United States and other countries.

iPhone, iPad, Mac and App Store are registered trademarks of Apple Inc. in the United States and other countries.

IOS is a registered trademark of Cisco in the U.S. and other countries.

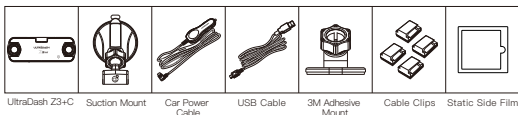
MicroSD is a trademark of SD-3C, LLC.

## PRODUCT SPECS

|   |  |
|---|--|
| Product Name / Model Number                                   | Dash Cam / Z3+C  |
| Power Requirements  | 5V / 1.5A; 12–24V DC   |
| Power Supply (Car power cable)                                | Input: 12–24V DC<br>Output: 5V DC<br>Fuse Type: 32mm / 2A  |
| Power Input(Car power cable)                                  | Built-in super capacitor   |
| Left/Right Sensor Resolution                                  | Sony Starvis, 5M Pixel   |
| Rear Sensor Resolution<br>(Rear camera is sold separately)    | Sony Starvis, 5M Pixel   |
| Wide-Angle Lens Angle/Aperture                                | 140° / F1.8  |
| Telephoto Lens Distance/Aperture                              | 164ft / F2.0 Standard Edition only   |
| Cabin Lens Angle/Aperture                                     | 140° / F1.8 Commercial Edition only  |
| Rear Lens Angle/Aperture<br>(Rear camera is sold separately)  | 160° / F1.8  |
| Left/Right Recording Resolution                               | 2K (2560 x 1440 pixel) @ 30fps   |
| Rear Recording Resolution<br>(Rear camera is sold separately) | 2K (2560 x 1440 pixel) @ 30fps   |
| Screen Size   | 2.7"   |
| Screen Resolution   | 960 (W) X 240 (H) pixels x RGB   |
| Screen Ratio  | 16 : 9   |
| Card Reader   | Micro SD, SDHC, up to 256GB  |
| SD Card (Recommended Type)                                    | 32–256GB, U3, SDHC. <b>Note:</b> SD card is not included. We recommend using SanDisk Max Endurance Micro SD Card for the best result.                                  |
| SD Card Recorded File Capacity<br>(Based on Default Settings) | 32 GB Micro SD = 120 mins of recording<br>64 GB Micro SD = 240 mins of recording<br>128 GB Micro SD = 480 mins of recording<br>256 GB Micro SD = 960 mins of recording |
| Unit Dimensions   | 5.7 x 2 x 0.6 inches (14.5 x 5.1 x 1.5cm)  |
| Unit Weight   | 4.9 oz (138.9g)  |

## PACKAGE CONTENTS

Please check the contents of your UltraDash product.



\* Product appearance may differ slightly to that shown above.

## PRODUCT FEATURES

### – 2.7" LCD Color Screen

We developed a screen that perfectly fits your camera, without any loss of resolution. This design allows you to use the playback feature, instantly letting you view the shot you just captured.

### – Quick Release Magnetic Mount

We know how difficult it is to maintain focus with movement. We developed a mount that is uniquely designed for easy attaching and removing so you can focus on capturing the perfect shot.

### – G sensor / File Protection

UltraDash Z3+C's built-in sensor detects an outside force, forcing the camera to save what has been just shot. The file can also be manually saved. By pressing our easy to access button around the screen, you are able to save an individual file.

### – Automatic Start / Stop Tech

UltraDash Z3+C comes with built-in sensors that automatically turn the camera on and off with the vehicle.

### – Built-In Microphone & Speaker

A built-in microphone and speaker come standard. The feature also works with the camera's playback feature.

### – GPS Data

UltraDash Z3 is able to record your location and speed while filming with the magnetic GPS mount.

### – Parking Mode (Optional)

UltraDash Z3+C has a sleep mode, but a unique feature enables the camera to automatically record 30 seconds of video if there is any physical movement of the vehicle. This feature requires hardwiring to permanent power. (sold separately, please see Cansonic website for more detail).

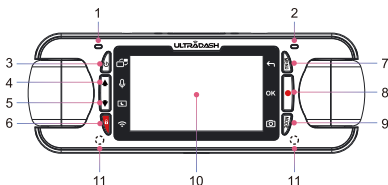
**– 2K Rear Camera Recording (Optional)**

UltraDash Z3+C supports the rear camera recording. You can purchase the rear camera as a front and rear 4K + 2K dual-camera recording. (sold separately, please see Cansonic website for more detail).

**– Infrared Illumination (Commercial Edition Only)**

The commercial edition is equipped with two automatic infrared fill lights that enhance image clarity captured through the cabin lens in low-light conditions.





### 1. Red Status LED Indicator

Constant: Power on.

Flashing: Recording.

### 2. Blue Status LED Indicator

Constant: Charging.

### 3. Power / Screen Select Button

**Power** 

Press and hold the button for 2 seconds to turn the camera on/off.

**Screen Select** 

Press to Switch the main camera to display on PIP screen.

### 4. Up / Mute Button

**Up** 

Navigate up within menus or go to the previous file in playback mode.

**Mute** 

Turn on or off the audio recording function while in video mode.

### 5. Down / Screen Off Button

**Down** 

Navigate down within menus or go to the next file in playback mode.

**Screen Off** 

Turn on/off the LCD screen.

### 6. File Protect / Wireless Link Button

**File Protect** 

Simply press the button and to protect the current video file from overwriting.

#### Note:

- If the button is pressed within the first third of a video clip, the previous clip will also be protected.
- If the button is pressed within the final third of a video clip, the next clip will also be protected (if recording continues).

## Wireless Link

In Video mode, press to start the wireless link when it is not recording.

### 7. Menu / Leave Button **MENU** /

**Menu** **MENU**

Press this button to open the Video or Setup menu.

**LEAVE** 

Press the Leave button to return to the previous page.

### 8. Record / OK Button / **OK**

**Record** 

In Video mode, press to start or stop recording.

**OK** **OK**

The OK button used to select options in menus.

### 9. Mode / Screen Shot Button **MODE** /

**Mode** **MODE**

This button allows you to navigate between video, and playback modes.

**Screen Shot** 

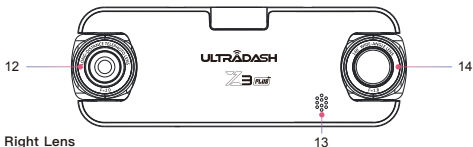
While you are recording in video mode, press the button and you will be able to take a screenshot of the current frame.

### 10. Screen

UltraDash Z3+C is equipped with a standard 2.7" LCD color screen to let you view.

### 11. Infrared Lights For Vehicle Cabin (Commercial Edition Only)

The commercial edition is equipped with two automatic infrared lights specifically designed for the vehicle cabin. These lights activate when internal and external lighting is insufficient, providing additional illumination for clearer image capture in low-light conditions. In addition, the cabin camera will switch to black-and-white mode to capture the video in dark environments.



### 12. Right Lens

**Standard**

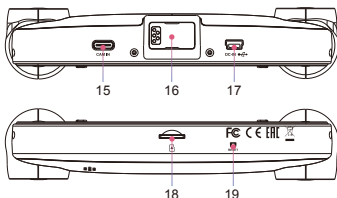
Right lens is a telephoto lens designed to capture all the details for you, or you can record the rear traffic by point this lens backward.

**Commercial**

Right lens is a wide-angle lens designed to record everything through the front windshield.

### 13. Speaker

System sound and recorded footage sound.



#### 14. Left Lens

##### **Standard**

Left lens is a wide-angle lens designed to record everything through the front windshield.

##### **Commercial**

Left lens is another wide-angle cabin lens which is designed for a professional driver to record driver-passenger interaction.

#### 15. Rear Camera Port (Optional)

By connecting UltraDash Z3+C rear camera, you are able to record a 2K resolution video simultaneously for your rearview. (sold separately)

#### 16. Connector Port

Attach the magnetic connector to the connector port.

#### 17. DC-IN/Data transfer Port

By connecting UltraDash Z3+C with the supplied car power cable you are able

to charge the camera. This will also be utilized to let you connect the USB cord to your PC.

You can either connect the car power cable with the device or magnetic connector.

#### 18. Micro SD Card Slot

Insert your micro SD card here. Push your memory card into the slot until you hear a click.

#### 19. Reset Button

On the rare occasions the camera has a problem, use the reset button to shut down the camera. Simply press the reset until the camera turns off and press power button to turn on.

## IN-VEHICLE INSTALLATION

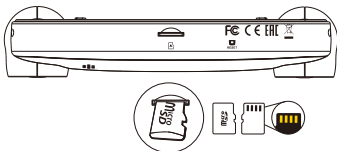
For the first installation, follow the instructions below:

### 1. INSERT YOUR MICRO SD CARD INTO UltraDash Z3+C

UltraDash Z3+C is designed to allow a standard Micro SD card to record your footage. Before installing, make sure the gold end of the card is facing down of the LCD screen. Once it's aligned with the slot, push the card in and listen for the **CLICK** that will confirm it is secure.

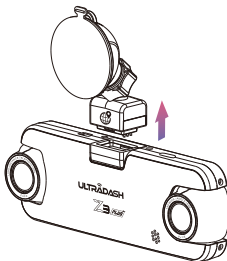
#### TIP:

- If you cannot hear the **CLICK**, take a small coin by the edge and push on the outside end of the card until the sound is made.
- Remember: **DO NOT REMOVE OR INSERT THE MEMORY CARD WHILE ULTRADASH Z3+C IS TURNED ON.**

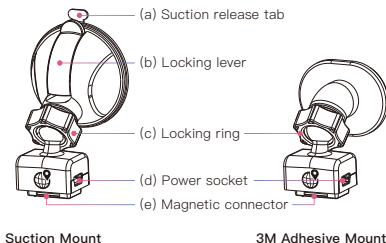


### 2. CONNECT UltraDash Z3+C TO THE MAGNETIC MOUNT

Attach UltraDash Z3+C onto (e) the magnetic connector on the mount. Make sure you align the camera within the connector port for proper installation.



## REPLACE THE SUCTION MOUNT WITH THE 3M ADHESIVE MOUNT (OPTIONAL):

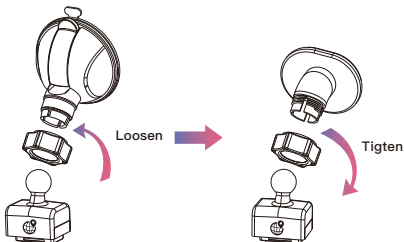


There are two types of mounts included in the package. One is a suction-cup and the other is a 3M-adhesive type. The suction mount makes it easier to attach and detach from the windshield while the adhesive mount provides more solid support for the camera.

The magnetic connector is already installed on the suction mount. If you prefer using the 3M adhesive mount, please follow the guide below:

### How to use the 3M Adhesive Mount:

- Loosen the **(c) locking ring** on the suction mount and pull the **(e) magnetic connector** out.
- Next, loosen the **(c) locking ring** from the 3M adhesive mount, and plug the **(e) magnetic connector** into the 3M adhesive mount.
- Clean the installation area on the windshield and peel off the plastic covering. Adhere it to the windshield.



### 3. ATTACH THE STATIC SIDE FILM AND MOUNT TO THE WINDSHIELD

#### **WARNING:**

ALWAYS pay attention to the road ahead of you. Driving with distractions on the road may result in penalties, accidents, or even death. **PLEASE DRIVE CAREFULLY.** Always place the mount in a location that will not obstruct the driver's view of the road. We recommend you place the mount behind the rearview mirror on the passenger side, within the windshield wiping area.

**CAM clearly needs to view through**



**Left-hand Drive**

**CAM clearly needs to view through**



**Right-hand Drive**

**DO NOT** place the camera in front of the driver's side.

**DO NOT** place the mount within the airbag deployment area or near any mirrors.

**DO NOT** operate UltraDash Z3+C while driving. Remember, the camera will automatically record when the vehicle engine has started.

**PLEASE** place the camera where the power cable is easily concealed and will not distract the driver. Avoid areas such as the steering wheel, pedals, or gear shifter.

**PLEASE** remember to clean the area where the mount's suction cup will be placed.

**PLEASE** adjust your camera settings before you begin driving.

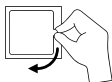
1



### 1. Position film location and clean windshield

Before applying, clean windshield location, remove any dust, oil and use any cloth to give one last polish for best performance.

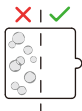
2



### 2. Remove the protective layer

Before sticking, pull out the actual film protector. Pull out and remove the protective layer on one side.

3



### 3. Attach static side film to the windshield

Adhere the static side to the windshield, press out and remove excess bubbles using a squeegee or plastic card.

Make sure to press it fully to adhere on the windshield.

4



### 4. Install 3M adhesive mount (or Suction mount)

Mount 3M adhesive mount within the surface of the film and avoid the area that spans between windshield and film.

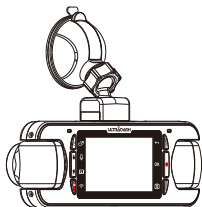
#### Note:

- Do not reuse windshield sticker applicator film repeatedly. This will reduce the adhesion performance and cause the static film to fall off.

#### 4. ATTACH THE MOUNT TO THE WINDSHIELD

Remove the protective plastic film and select a location on the windshield where it won't distract you. Then, put the suction mount in place.

Release the **(b) locking lever** from the mount by pulling down on it. Hold the suction mount in place and press against the window. While holding it in place, pull the **(b) release lever** back to lock the mount



#### TIPS:

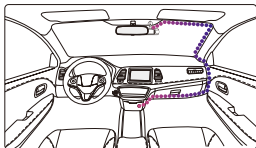
- When selecting a location for the suction mount, make sure it's on a glass surface that is smooth and free of paint.
- Before mounting, clean the area with a dry/clean cloth and add a small amount of moisture to the windshield. This allows a stronger bond to form between the glass and the suction mount.
- Remember to place the mount within the area of the vehicle's windshield wipers.
- The **(a) suction release tab** allows you to release the cup from the glass to readjust your camera placement.

#### 5. ADJUST THE ANGLE

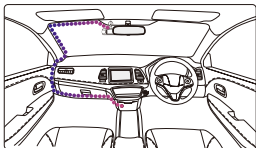
Loosen the **(c) locking ring** and adjust the camera to the angle you want. When you find the perfect angle, remember to tighten the **(c) locking ring** again.

#### 6. CONNECTING TO CAR POWER OUTLET

Connect the power cable that is in the package to your vehicle's 12V outlet. The provided cable clips can help you keep the power cable neat.



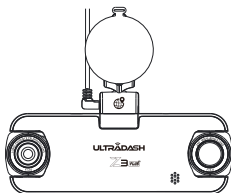
➤ 12-24V DC Left-hand Drive



➤ 12-24V DC Right-hand Drive



Plug the power cable into the (d) power socket of the mount or camera. This will allow the camera to begin charging.



## 7. THE FIRST-TIME SETUP

When connecting the power, UltraDash Z3+C will turn on and display the first-time setup guide below.

Select the Language

Language

English ✓

Español

Deutsch

Русский

OK Enter Back

Select the Country

Select Country

United States >

Canada >

China

Mexico >

OK Enter Back

Select Time Zone

Select Time Zones

United States (EST) ✓

United States (CST)

United States (MST)

United States (PST)

OK Enter Back

Set the Time and Date

Set Time and Date

11 : 17 : 01

12 / 25 / 2022

MM/DD/YYYY

OK Enter Back

Select the Speed Unit

Select Speed Unit

MPH ✓

KMH

OK Enter Back

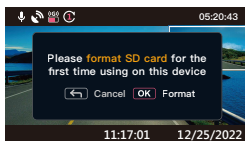
Set Wireless Link Password

Set Wireless Link Password

1 2 3 4 5 6 7 8

OK Enter Back

First Time Use SD Card Format. Press OK button to format



**TIP:**

You can reset the settings either by operating inside of the SETUP MENU, or by restoring defaults.

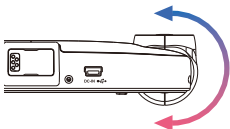
From now on, UltraDash Z3+C will automatically turn on and start recording once power has been made available from the 12V outlet. Just start the vehicle and start driving!

- If there is no 12V outlet or cigarette lighter for your vehicle, use the included USB power cable but please notice that your USB power output port should provide 2A current to make sure the device works properly.
- DO NOT wire UltraDash Z3+C directly to the car cigarette outlet or any 12V outlet. Doing so will result in permanent damage to the camera.
- You can purchase our hardwire kit from the Cansonic official website that will directly connect to your vehicle's fuse box. This will allow you to have your 12V outlet available for other use.

Please read carefully and follow the instructions below to help you operate UltraDash Z3+C safely.

## 8. ADJUST THE ANGLE

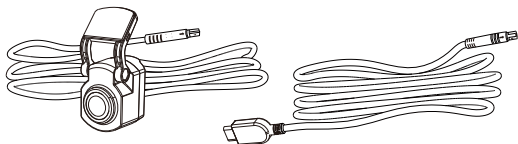
Adjust the camera to the angle you want, the lens can be rotated up and down 180 degree. We recommend that the hood of the car should occupy at least 1/5 of the screen.



Congrats! Now you are all set!

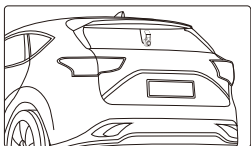
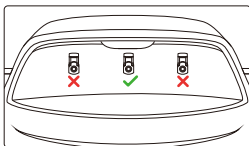
## 9. REAR CAMERA INSTALLATION (OPTIONAL)

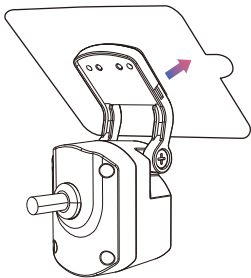
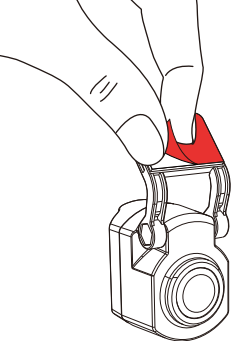
The 2K resolution rear camera R1 is sold separately on the official website.



### (1) SELECT A LOCATION ON THE REAR WINDSHIELD

Select a location on the rear windshield, attach the adhesive mount, and place the rear camera in place. The rear camera mount is designed for sloping windows or vertical/ flat windows.



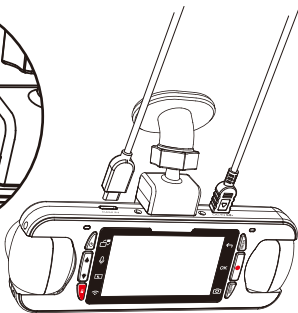


**Note:**

- It is recommended to place the rear windshield camera within the windshield wiping area at the top of the rear windshield to record as clear an image as possible. Make sure the heating grid lines do not obstruct the view.

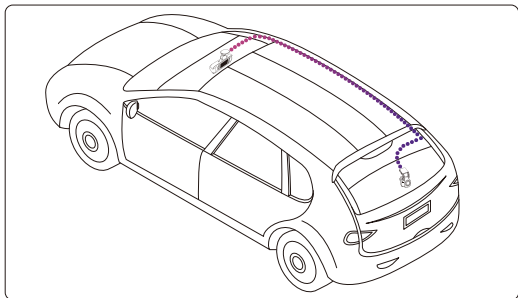
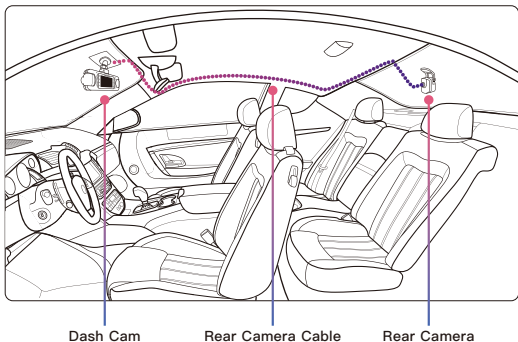
**(2) CONNECT THE REAR CAMERA CABLE**

Use the CAM IN port on the top of the front dash cam and plug in the rear camera cable.



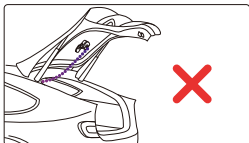
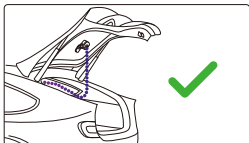
### (3) ROUTE THE REAR CAMERA CABLE

Route the rear camera cable through the vehicle to the rear windshield and tuck the cable away. The end of the cable should run through from the side of the headliner at the rear of the vehicle for you to connect and mount the rear camera to your selected position.

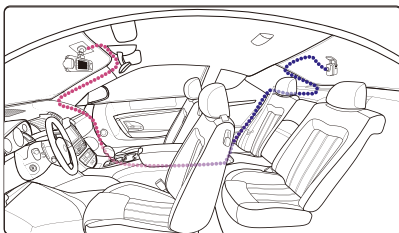


**Note:**

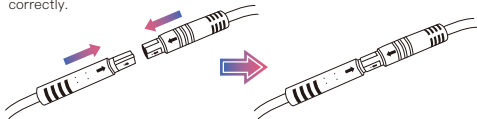
- For hatch back trunk opening, leave about 3–5 inches of extra cable at the vehicle's end to ensure adequate cable connections, and comfortably open the trunk without moving the rear camera.




- Check all airbags locations on the vehicle owner's manual. DO NOT route cable over the airbags to avoid potential interference with airbag deployment and posing a problem with proper airbag operation.
- For vehicles that have Headliner and curtain airbag, the wire should run through from the bottom of the passenger side carpet trim, along the rear seat side, to the rear windshield molding, and to the selected position.

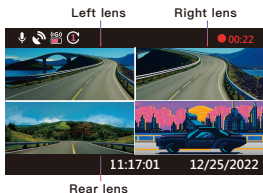
**(4) CONNECT THE REAR CAMERA CABLE TO THE REAR CAMERA**

When all the cable is in place, connect the rear camera cable to the rear camera, line up cable pins and turn the locking ring to secure the cable connection. Check the front dash cam to ensure the rear camera is working correctly.



## (5) ADJUST THE REAR CAMERA

Once the mount is set to the rear windshield, ensure the display on the front dash cam (front and rear views) are level. Press the **Screen Select** Button  when recording to switch from the rear display to full screen, adjusting the rear camera accordingly. Ensure the display is in the center, and the vehicle behind should show at least 1/3 of the display. **DO NOT** attempt to adjust the dash cam while driving.



### Note:

- You can also connect UltraDash Z3+C to your mobile device and download **iQ Viewer** on App Store / Google Play. Use its **Live View** function to adjust the rear camera.
- If you still find it too much trouble or don't want to do it yourself. It is recommended to find your local reliable **Auto Dealer Service Department, Car stereo Installer, and Auto Mechanic shop** to ask about dash cam installation. Fees may vary from one shop to another. Please ask and check the reputation of the shop before installing it.

### WARNING:

**ALWAYS** pay attention to the road ahead of you. Driving with distractions on the road may result in penalties, accidents, or even death. **PLEASE DRIVE CAREFULLY.**

**ALWAYS** place the mount in a location that will not obstruct the driver's view of the road. We recommend you place the mount behind the rearview mirror on the passenger side, within the windshield wiping area.

**DO NOT** place the camera in front of the driver's side.

**DO NOT** place the mount within the airbag deployment area or near any mirrors.

**DO NOT** operate UltraDash Z3+C while driving. Remember, the camera will automatically record when the vehicle engine has started.

**PLEASE** place the camera where the power cable is easily concealed and will not distract the driver. Avoid areas such as the steering wheel, pedals, or gear shifter.

**PLEASE** remember to clean the area where the mount will be placed.

**PLEASE** adjust your camera settings before you begin driving.

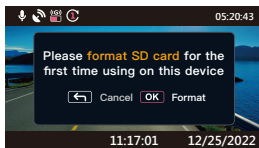
## ON SCREEN NOTIFICATIONS

The following information will help you better understand the On Screen Notifications when corresponding alert is detected.

- **First Time Use SD Card Format:** when the SD card is inserted into the device for the first time, the device will ask you to format the card. Press **OK** button to format and **MENU** button to cancel.

Note: Please save the important file before formatting the card.

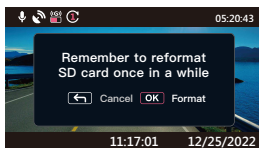
OPTIONS: Format (Recommended) / Cancel



- **30 Days SD Card Reformat:** When the SD card has been formatted for 30 days, the device will ask you to reformat the card every 30 days to days to keep the storage of SD card is working correctly. Press **OK** button to format and **MENU** button to cancel.

Note: Please save the important file before formatting the card.

OPTIONS: Format (Recommended) / Cancel

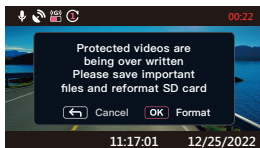




- **Protected Files Over Written:** When the protected space of SD card is full, the device will ask you to reformat the card, otherwise the first protected file will be overwritten when the protected space is full. Press **OK** button to format and **MENU** button to cancel.

Note: Please save the important file before formatting the card.

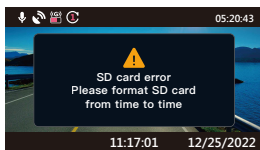
OPTIONS: Format (Recommended) / Cancel



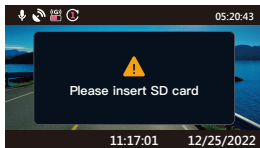
- **SD Card Error:** When there is any writing / reading issue with the SD card, the device will ask you to replace the card.


Note: Please save the important file before formatting the card.

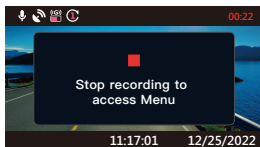
Note: If the notification keeps showing up, please check if the SD card is still working. The life of SD cards is limited, it could be from 3 months to a year or more depends on usage. Check with your SD card manufacturer for warranty information.




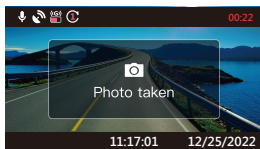
- **Insert SD card:** This is a notification to remind you to insert the SD card.



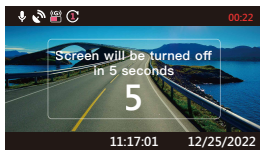
- **Access Menu During Recording:** When pressing **MENU** button during recording, you may need to press **Record**  button to stop recording first then you can press **MENU** button to access Menu.



- **Screenshot:** Press and hold the **Record**  button for two seconds during recording to take a snapshot of the photo. The image will be saved in the photo folder



- **Screen Saver:** When screen saver is turned on, the device will automatically turn off the screen after 30 seconds or 2 minutes of inactivity, and 5 seconds before the screen is turned off. The display will indicate that the machine is about to turn off the screen.

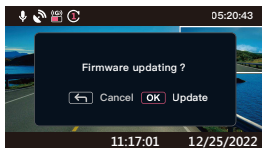


- **Update Firmware:** Press **OK** button to start updating the firmware and **MENU** button to cancel.

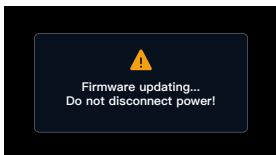
Note: Please save the important file before formatting the card.

Note: For more information about firmware update, please read page 50.

OPTIONS: Update (Recommended) / Cancel



- **Updating Firmware:** Do not disconnect power or press any button during this period, it may cause update failure.
- Note: For more information about firmware update, please read the page 50.



## VIDEO MODE

The following information will help you better understand the icons in **VIDEO MODE** and their relative functions. Some icons show up only when corresponding functions are activated.

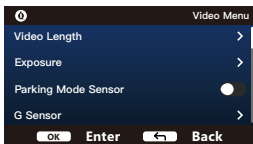
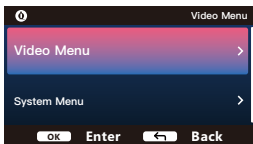


1. **Microphone:** When the audio recording function is off, there will be a red line across the icon.
2. **GPS:** If this icon flashes, it indicates UltraDash Z3+C is locating GPS signal. When the GPS signal is found, the icon will stop flashing and remain stable on the screen.
3. **G Sensor:** The current sensitivity level of G-Sensor.
4. **Video Length:** The duration of each video clip.
5. **Parking Mode Sensor:** Indicates whether the parking mode function is enabled or not. (Optional)
6. **Recording Duration:** This will indicate the length of the current recording.
7. **File Protection:** Indicates the current video clip is protected.
8. **PIP:** UltraDuo Z3+C will display the image from both cameras at the same time. Use screen select hot key to choose the main camera to display on PIP screen.
9. **Time:** Displays current time.
10. **Date:** Displays current date.

## VIDEO MENU

UltraDash Z3+C's default settings have been set for you to use the camera without needing to change the settings. If you need to make adjustments to the settings, the following instructions will help you.

Press the **MENU** button and select **Video Menu** while in **VIDEO MODE** while UltraDash Z3+C is not recording.



Use the **UP** and **DOWN** buttons to select setting options and press the **OK** button to enter the sub-menu.

Once you access the sub-menu, highlight the desired setting and press the **OK** button to confirm your selection and to return to the **VIDEO MENU**.

Press twice the **LEAVE** button twice to return to video mode.

### TIP:

– You are not able to access UltraDash Z3+C menu while the camera is recording.

- **Video Length:** Set the length for each individual video clip. The video recorded by UltraDash Z3+C will be split and stored as individual video clips. The loop recording function will automatically overwrite the oldest and non-protected video clip when the memory card is full.  
OPTIONS: 1 Minute (default) / 3 Minutes / 5 Minutes
- **Exposure:** Adjust exposure levels settings.  
OPTIONS:  
Left Camera: +2 / +1 / 0 (default) / -1 / -2  
Right Camera: +2 / +1 / 0 (default) / -1 / -2  
Rear Camera: +2 / +1 / 0 (default) / -1 / -2
- **Parking Mode Sensor (Optional):** If the parking mode sensor is turned on, Z3+C will enter sleep mode when the vehicle is turned off or when Z3+C loses its power supply. In the sleep mode, if Z3+C detects any external forces, it will automatically turn on and take a 30 second video and turn off afterward. The videos taken in this situation will all be protected. The parking mode feature requires the hardwiring to permanent power. (Hardwire kit is sold separately)  
OPTIONS: On / Off (default)

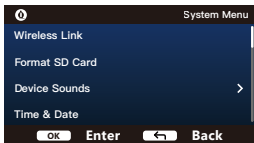
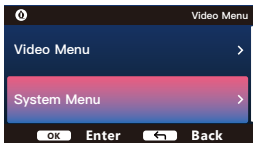
- **G Sensor:** G sensor is the sensor that can detect forces. When it senses any forces, it will protect the current file automatically. Adjust the sensitivity of G sensor here.  
OPTIONS: High / Medium (default) / Low / Off
- **GPS:** Turn the GPS function ON or OFF.  
OPTIONS: On (default) / Off
- **Speed Units:** Adjust the unit for speed data.  
OPTIONS: MPH (default) / KMH
- **Screen Saver:** UltraDash Z3+C has a function to let the screen shut down after a period of inactivity. Press any button to re-activate the display.  
OPTIONS: 30 Seconds / 2 Minutes / Off (default)
- **UltraDash Stamp:** Turn the UltraDash logo stamp ON or OFF on the recorded files.  
OPTIONS: On (default) / Off
- **Time & Date Stamp:** Turn ON or OFF the date stamp mark on the recorded files.  
OPTIONS: On (default) / Off
- **Information Stamp:** Turn ON or OFF the information stamp including the acceleration, speed, longitude and latitude data on the recorded files.  
OPTIONS: On (default) / Off
- **Speed Stamp:** Turn ON or OFF only the speed stamp mark on the recorded files.  
OPTIONS: On (default) / Off
- **License Plate Stamp:** Input your license plate number to put your license plate stamp on the recorded files.  
OPTIONS: On (default) / Off

**NOTE:**

- When you are in the **SETUP MENU** -> **Restore Defaults**, you will be able to

## SETUP MENU

Press the **MENU** button and select Video Menu while in **VIDEO MODE** while UltraDash Z3+C is not recording.



Use the **UP** and **DOWN** buttons to select setting options and press the **OK** button to enter the sub-menu.

Once you access the sub-menu, highlight the desired setting and press the **OK** button to confirm your selection and to return to the **SETUP MENU**.

Press the **LEAVE** button to return to video mode.

**Note:** UltraDash Z3+C default settings have been selected for great image quality and ease of operation. Under most circumstances, you don't need to change the settings.

**Note:** The setup menu cannot be accessed while the camera is recording.

- **Wireless Link:** Turn on the wireless function to connect your mobile device.  
OPTIONS: Connect / Disconnect
- **Format SD Card:** Format the memory card. Formatting will remove ALL the files in the card.  
OPTIONS: Yes / No
- **Device Sounds:** Adjust the button beep sound, volume, and voice recording.  
OPTIONS:  
Beep: On (default) / Off  
Audio Rec: On (default) / Off
- **Time & Date:** Adjust the TIME and DATE as required by using the UP and DOWN buttons to set the value. Press the **OK** button to save the setting and press the **MENU** button to return to the **SETUP MENU**.
- **Time Zone / DST:** Select the time zone setting.  
OPTIONS: -12 / -11 / -10 / -9 / -8 / -7 / -6 / -5 / -4 / -3.5 / -3 / -2.5 / -2 / -1 / GMT / +1 / +2 / +3 / +4 / +5 / +6 / +7 / +8 / +9 / +10 / +11 / +12

- **Language:** Select a preferred language.  
OPTIONS: English (default) / Español / Deutsch / Русский / 简体中文 / 繁體中文
- **Country:** Select a country and time zone setting.  
OPTIONS: United States / Canada / China / Mexico / Korea / Japan / Taiwan / Russia / Spain / Norway / Finland / Sweden / Germany / France / Italy / Netherlands / Belgium / Denmark / Poland / United Kingdom / Ireland / India / Others
- **Display Invert:** Rotate the LCD display for upside down footage recording only.  
Note: Up and down buttons remain the same as the default configuration.  
OPTIONS:  
Left Camera: On / Off (default)  
Right Camera: On / Off (default)  
Rear Camera: On / Off (default)
- **Display Mirror:** Flip the LCD display horizontally for mirror footage recording only.  
OPTIONS:  
Left Camera: On / Off (default)  
Right Camera: On / Off (default)  
Rear Camera: On / Off (default)
- **Restore Defaults:** Reset all the settings to UltraDash factory default.
- **System Info:** Displays the firmware version.  
OPTIONS:  
Firmware Version: Displays the firmware version.  
Wireless Link Info: Displays the wireless link SSID and change wireless link password.  
Card Info: Displays the memory card information.  
Satellite Signal: The count of how many satellite signals Z3+C is receiving.



## PLAYBACK MODE

Use **MODE** button to access **PLAYBACK MODE** while UltraDash Z3+C is not recording.

In **PLAYBACK MODE**, you are able to review the videos you have stored.

### DIRECTORIES

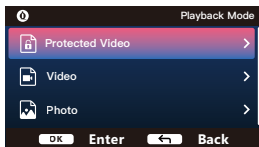
Press the **UP** or **DOWN** buttons to navigate through the menu.

**Protected:** The directory for all protected videos.

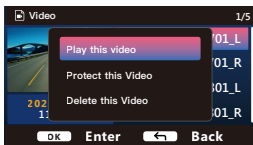
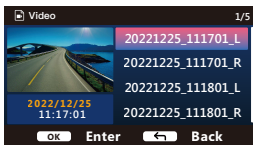
**Video:** The directory for all unprotected videos.

Note: If the video file is protected under playback mode, the file will remain in video directory.

**Photo:** All photos in the file.



### VIDEO FILES



Use the **UP** and **DOWN** buttons to select the video file and press the **OK** button to select play this video.

**Video file name:** The format of video file name is **YYYYMMDD\_HHMMSS\_[L/R/B]**

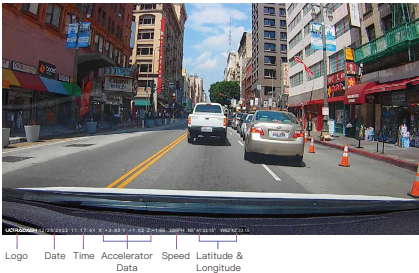
**YYYY:** Years. **MM:** Months. **DD:** Days.

**HH:** Hours. **MM:** Minutes. **SS:** Seconds.

**L/R/B:** Left or Right or Back(Rear) Camera.

For example, 20221225\_111701\_L mean this file was taken at Dec 25, 2022, 11:17:01, L means left lens.

The watermark in the image file is described below.



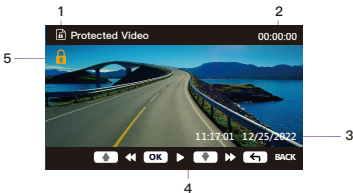
**UltraDash Stamp:** Logo, can be turned on / off in VIDEO MENU.

**Time & Date Stamp:** Date, Time, can be turned on / off in VIDEO MENU.

**Information Stamp:** Accelerator Data, Speed, Latitude & Longitude, can be turned on / off in VIDEO MENU.

**Speed Stamp:** Speed Data, can be turned on / off individually.

**License Plate Stamp:** License plate number, can be turned on / off in VIDEO MENU.




1. **File Type:** Indicates the file type is video.
2. **Playback:** Displays the current playback time.
3. **Date & Time:** Indicates the date and time of the recorded file.
4. **Playback Controls:** Use UltraDash Z3+C buttons as instructed below.



OK : PLAY/PAUSE.



MENU /  : STOP playing video and go back to Video/Protected directory.



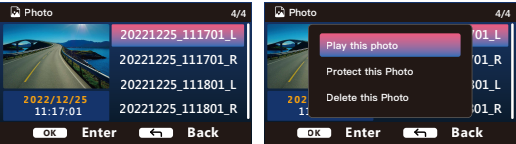
UP : REWIND.



DOWN : FAST FORWARD.

5. **Protected File :** Indicates the selected file is protected.



**PHOTO FILES**



Use the UP and DOWN buttons to select the video file and press the OK button to play.



- 1. **File Type:** Indicates the file type is video.
- 2. **Date & Time:** Indicates the date and time of the recorded file.
- 3. **Playback Controls:** Use UltraDash Z3+C buttons as instructed below.

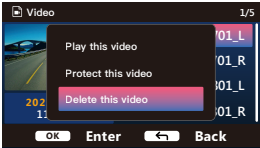
-  **UP :** REWIND.
-  **DOWN :** FAST FORWARD.

## DELETING FILES

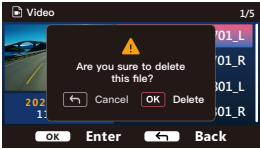
Use the **UP** and **DOWN** buttons to select the video file and press the **OK** button to select delete this video.

**Note:** PROTECTED FILES CANNOT BE DELETED.

You will have the following options:



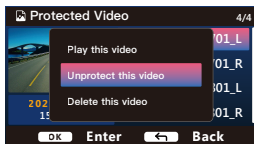
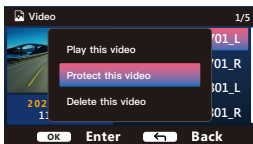
Once selected, follow the on screen instructions to delete the current file.



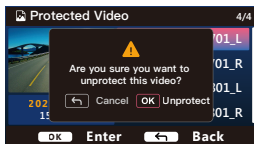
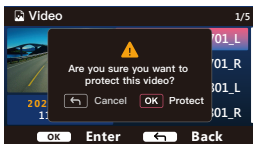
## PROTECT / UNPROTECT FILE

Use the **UP** and **DOWN** buttons to select the video file and press the **OK** button to select protect / unprotect this video.

You will have the following options:



Once selected, follow the on screen instructions to protect the current file.



## WIRELESS LINK & iQ VIEWER ( iOS & Android )

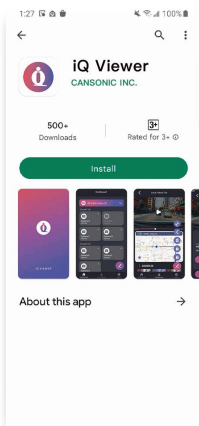
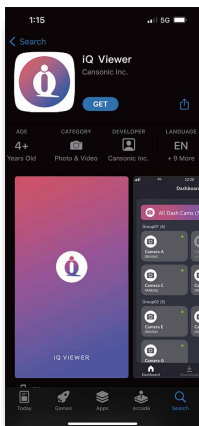
Connect UltraDash Z3+C with your mobile devices by using wireless link function.

### 1. DOWNLOAD iQ Viewer

iQ Viewer is a completely free set of video playback application. Which can be used to remote control and live stream preview in a short distance or download and review videos from UltraDash Z3+C. With its mapping function, users can view the route, speed, latitude, longitude, and direction of the drive at the time. In addition, users can easily edit the length of the video for quick upload to share with friends, relatives, and insurance companies.

Please download iQ Viewer from App store / Google Play.

You can choose the theme color of the app through the setting of your phone. The following instructions will use the dark theme to introduce the APP.



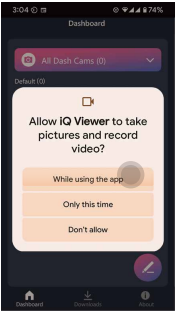
Operating System Minimum Requirements: iOS 15 and above / Android 10 and above.

2. OPEN iQ Viewer APP ON YOUR MOBILE DEVICE

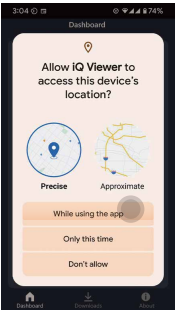
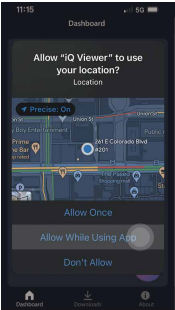
The first time you open the app, two notifications will pop up.



- 1. You will need to allow 「iQ Viewer」 to take photos and record videos 「While using the app」 . (Android users only)
- 2. You will need to allow 「iQ Viewer」 to access the location information of this device "While using the app". (Both Android and iOS users) The following pictures are provided for reference.

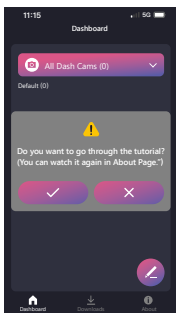
Android



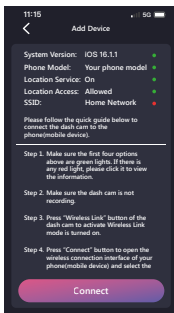
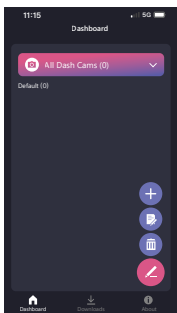
iOS



After allowing, the app will pop up a notice to ask you if you want to go through the first time use tutorial. We highly recommend press   when you haven't gotten familiar with iQ Viewer. You can always turn it off or on in **ABOUT** page.



Press **PEN**  icon on **DASHBOARD** page and then press +  icon to enter **ADD DEVICE** page.







### 3. TURN ON UltraDash Z3+C'S WIRELESS LINK FUNCTION

There are two ways to turn on WIRELESS LINK.

While in **VIDEO MODE**, press **STOP**  button to stop the recording, and press **WIRELESS LINK**  button to turn on **WIRELESS LINK**.

While in **VIDEO MODE**, press **STOP**  to stop the recording, press **MENU** button, select **SETUP MENU**, and select **WIRELESS LINK** option.


Make sure UltraDash Z3+C is not recording. If a recording is in progress, please press the **RECORD**  button to stop recording. You will find that the red light will stop flashing, and the record red dot icon in the upper right corner of the screen will disappear. Press **WIRELESS LINK**  button on the dash cam until the device activates **WIRELESS LINK** function. You'll see the password you need to use next.



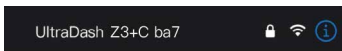
#### Note:

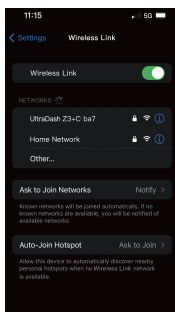
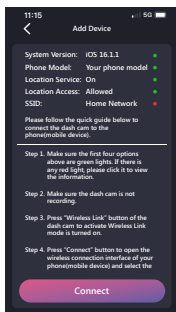
- The password can be edited in Setup Menu > System Info > Wireless Link Info > Password Change.
- Please be aware, that if you press **MENU** button, **WIRELESS LINK** function will be turned off and go back to **VIDEO MODE**.

### 4. CONNECT ULTRADASH Z3+C WITH YOUR MOBILE DEVICE

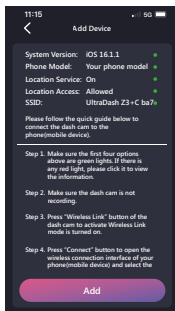
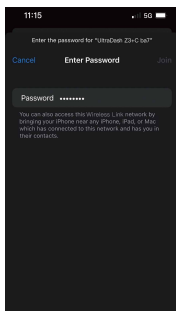
Press **CONNECT**  button to open the wireless connection interface of your mobile device and select the wireless device you want to connect.

The name of the device should start with "UltraDash..." ba7 is the product ID, each Z3+C has a different ID.





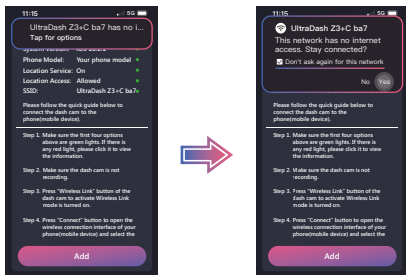
After selecting the UltraDash wireless device, enter the password displayed on the dash cam screen. Confirm the connection and press **BACK TO PREVIOUS PAGE** < button at the top left to return to **ADD DEVICE** page. Check if all five green lights ● are on in **ADD DEVICE** page, if there are any red lights ●, please press to view the relevant information.



## 5. THE VERY IMPORTANT STEP

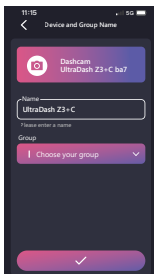
(Android users must pay attention, iOS users can skip)

This step is very important, please pay attention that after about 5–10 seconds, your mobile device may pop up with a notification telling you **"This UltraDash device has no internet access"** please check **"Don't ask me again for this network"** and select **"Yes"** to complete the setup.



## 6. RENAME THE DEVICE AND ASSIGN THE GROUP

Please press **ADD** button to enter **DEVICE AND GROUP NAME** page, you can rename your device and set it to your custom group. You can also directly press **✓** button to complete all settings, and the device will be automatically assigned to the default group with the model of the device as the name.

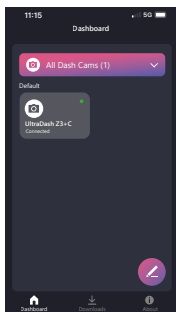


## 7. READY TO GO

After completing all the settings, you will be returned to **DASHBOARD** page. Congratulations! Now you are all set! You can view all your devices on **DASHBOARD** page. After pairing and connecting you can directly press to enter your connected device to use all wireless functions.

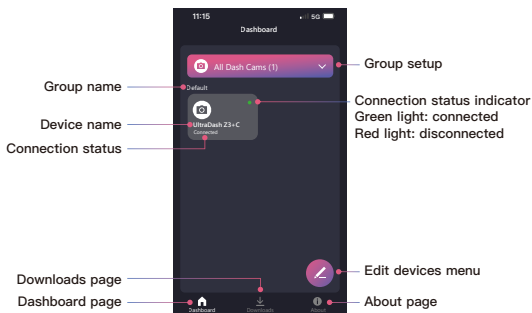
### Note:

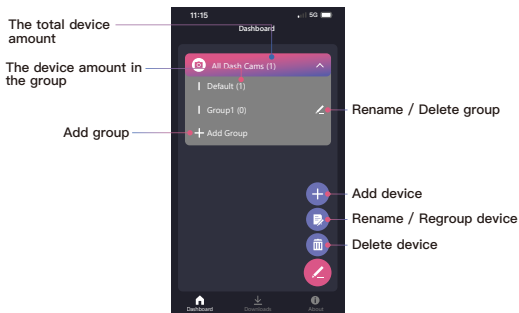
- A mobile device can only connect to one dash cam at a time through a wireless network, and you must connect your device to use it.



### MANAGE CONNECTED DEVICES (DASHBOARD PAGE)

**ADD / DELETE / RENAME / REGROUP** connected devices on your mobile device. Press the connected device you just added on the **DASHBOARD** page. You will see a green light ● next to the device meaning the device is connecting to your mobile device correctly and then you will enter the **DASH CAM** page.

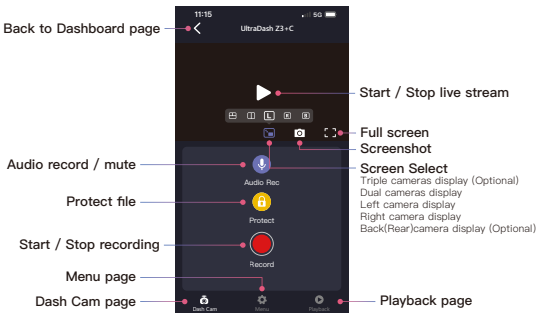




After you enter **DASH CAM** page, you can find there will be three pages (**DASH CAM / MENU / PLAYBACK**) in the bottom navigation bar. You can always press it to switch the page. If you want to go back to **DASHBOARD** page, just simply press **BACK TO PREVIOUS PAGE** < button.

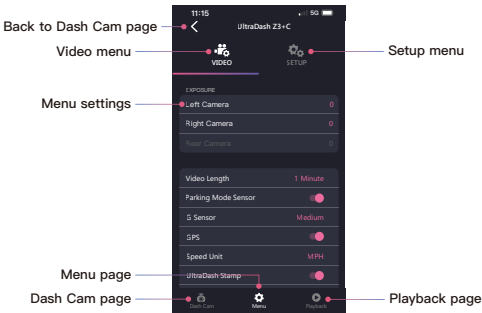
### CONTROL AND OPERATE (DASH CAM PAGE)

Control the **LIVE STREAM / VIDEO RECORD / AUDIO RECORD / PROTECT FILE** function on your mobile device.



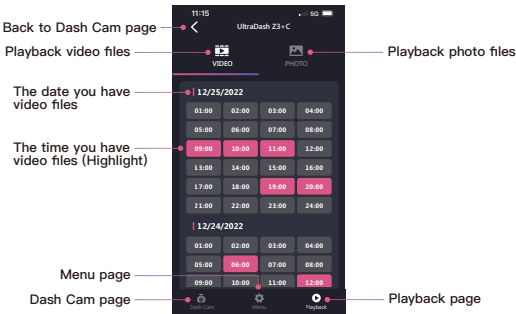
**ACCESS VIDEO AND SETUP MENU (MENU PAGE)**

**ADJUST SETTINGS** on your mobile device. These settings will be synced with the dash cam.

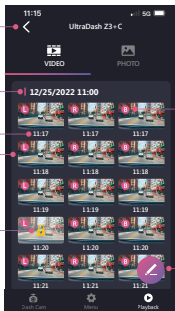


**PLAYBACK AND DOWNLOAD FILES (PLAYBACK PAGE)**

**PLAYBACK (PROTECT / UNPROTECT / DELETE)** or **DOWNLOAD** the videos from the connected UltraDash Z3+C on your mobile device.



Back to previous page



Date and time

Exact time of the video

Video files

Protected video files

L: Left camera  
R: Right camera  
B: Back(Rear)camera  
(Optional)

Edit files menu

Back to previous page



Play / Stop the  
selected video

Timeline of the  
selected video

Full screen

The video you select  
(Highlight)

Download files

Delete files

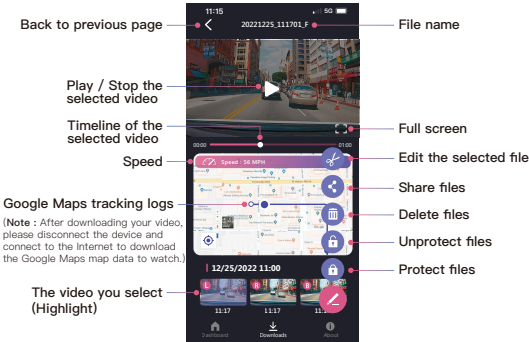
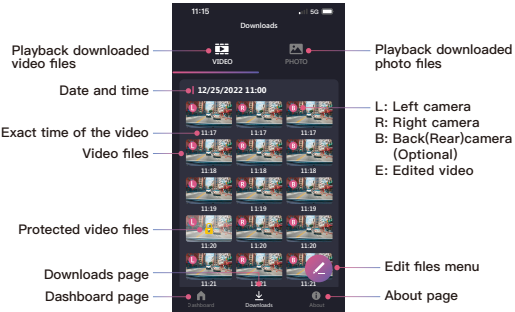
Unprotect files

Protect files

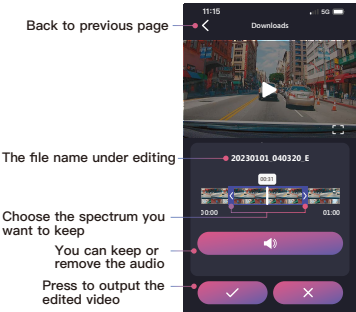


**CUT AND SHARE DOWNLOADED FILES (DOWNLOADS PAGE)**

Not only **PLAYBACK (PROTECT / UNPROTECT / DELETE)** the downloaded files with speed data and Google Maps function but also **CUT** and **SHARE** the files to your friends and relatives on your mobile device.

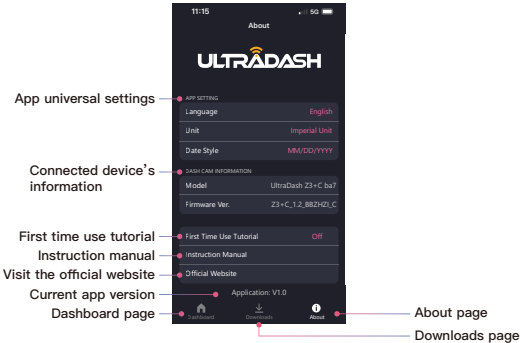


Cut / edit function is very simple, select the length of the video you want, and press ✓ button to output the edited video.



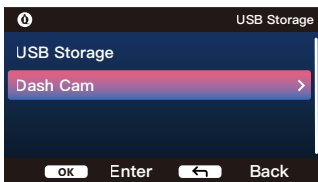
APP SETTINGS AND HELPFUL INFO (ABOUT PAGE)

Change LANGUAGE / SPEED UNIT / DATE FORMAT settings and check the FIRMWARE / SOFTWARE VERSION / FIRST TIME USE TUTORIAL / INSTRUCTION MANUAL / OFFICIAL WEBSITE on your mobile device.



## USB STORAGE ( Windows & Mac )

When you use the provided USB cable to connect UltraDash Z3+C to your computer, the LCD screen will show two available options.



Use the **UP** and **DOWN** buttons to select the necessary function, and press the **OK** button to continue.

### USB STORAGE

When you have connected UltraDash Z3+C to the computer, the camera will operate as a card reader. Your computer will have a pop up of a new drive for you to browse all the video and picture files.

#### **Note:**

- UltraDash Z3+C is a “Read Only” device. If you want to copy / delete / edit the files, remove the Micro SD Card and use another card reader to connect your computer.

**REMEMBER:** Turn your UltraDash Z3+C off before you disconnect it from your computer.

### DASH CAM

When you choose this option, UltraDash Z3+C will turn on and work normally while the device is being charged.

#### **Note:**

- **REMEMBER:** To always turn off UltraDash Z3+C before disconnecting it from your computer.

## FIRMWARE UPDATE INSTRUCTION

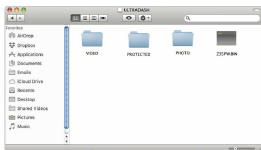
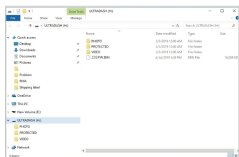
Team UltraDash will keep update the firmware to improve the better user experience for our valued customers. Once you register your product on Cansonic website, we will send you information about our new firmware update. Or you can visit the link below once for a while to check if there is any new firmware update:

**https: //cansonic.com/pages/download**

Please follow the step by step instruction below:

1. Make sure your SD card is formatted and copy the Z3SFW.BIN into the root directory of the SD card.

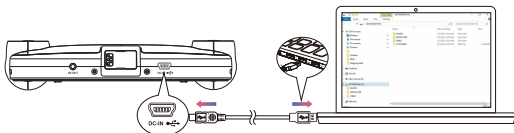
**Notice:** Make sure the file name is Z3SFW.BIN If you see Z3SFW.BIN(1) or so on, please rename the file name to **Z3SFW.BIN**



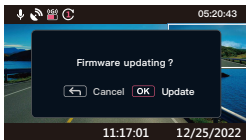
2. Insert the SD card into the dashcam.



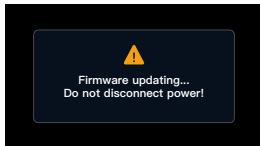
3. Connect UltraDash Z3+C to your PC or Mac with the USB cable, and make sure the dashcam is charging.



4. When turning on the dashcam, select Dash Cam and there will be a popup message as picture below. Please press **OK** button to start the update.



5. When the update starts, there will be a popup message as picture below. **DO NOT TURN OFF OR PRESS ANY BUTTON DURING THIS PERIOD, IT MAY CAUSE THE UPDATE FAILURE.**



6. It may take a while for updating. Once it finishes the update, UltraDash Z3+C will turn off the device automatically.



7. Turn on the dash cam and reset the first time settings. Press MENU button twice to entry SETUP MENU and select the System Info and select Firmware Version to check if the Version is the latest one [Z3+C\_X.X\_XXXXXX\_X] as shown on website, then it is successfully updated.



## iQ PLAYER (Windows & Mac)



iQ Player is completely free set of video playback software. Which can be used to review data and videos of the latest UltraDash dash cameras. With its mapping function, user is able to view the route, speed, latitude, longitude, direction of the drive and information of the G sensor data at the time. In addition, users can easily edit the length of video for quick upload to share with friends, relatives and insurance companies.

**Download Link:** <https://cansonic.com/pages/iq-player>

## WARRANTY

Take a minute to register your new UltraDash product at <https://cansonic.com/pages/registration> and save a copy of your receipt or bill of sales as proof of purchase.

You will enjoy our manufacture warranty coverage, repair / replacement service and customer support.

### ONE (1) YEAR LIMITED WARRANTY

Cansonic warrants UltraDash branded products against defects in materials and workmanship when used normally in accordance with our official guidelines

<https://cansonic.com/pages/warranty> for a period of ONE (1) YEAR from the date of original retail purchase.



# ONE YEAR LIMITED WARRANTY

To obtain repairs or replacement within the terms of this warranty, please fill the information and present your receipt or bill of sale as proof.

Serial Number: \_\_\_\_\_ Model Number: \_\_\_\_\_

Purchase Date: \_\_\_\_\_ Name: \_\_\_\_\_

Email: \_\_\_\_\_ Telephone: \_\_\_\_\_

Address: \_\_\_\_\_

\_\_\_\_\_

The Company hereby warrants to the original retail purchaser of this product that should this product or any part thereof, under normal use and conditions, be proven defective in material or workmanship within one year parts and labor from the date of original purchase, such defect(s) will be repaired or replaced with reconditioned product (at the Company's option) for parts and repair labor. This limited warranty is the purchaser's exclusive remedy for any such defect(s). This warranty does not apply to any product of part thereof which, in the opinion of the Company, has suffered or been damaged through alteration, improper installation, mishandling, misuse, neglect, accident, or by removal or defacement of the factory serial number/bar code label(s). The opinion of the Company with respect to this matter shall be final.

**THE EXTENT OF THE COMPANY'S LIABILITY UNDER THIS WARRANTY IS LIMITED TO THE REPAIR OR REPLACEMENT PRO VIDEO ABOVE AND, IN NO EVENT, SHALL THE COMPANY'S LIABILITY EXCEED THE PURCHASE PRICE PAID BY PURCHASER FOR THE PRODUCT.**

## TROUBLE SHOOTING

|   |  |
|---|--|
| Blurred Image (Video)   | UltraDash Z3+C comes with a protective lens cover for the camera's lens, be sure to remove it. Wipe the lens with a soft cloth until any debris / stains are removed. Clean your vehicle's windshield where the camera is placed.  |
| Unable to insert Micro SD Memory Card                                       | Make sure the metal portion of the memory card faces the screen side. Once inserted, push the card until a <b>CLICK</b> sound is heard.  |
| Memory card does not release from UltraDash Z3+C                            | UltraDash Z3+C releases the Micro SD Memory Card by pressing the memory card forward. By applying the pressure on the memory card, a small click sound will be made.<br>If you are unable to remove the memory card, use the edge of a small coin to push forward until the click sound is made. |
| UltraDash Z3+C video files can not be played                                | These files may not be played on your PC if you do not have a suitable video player installed. Please refer to page 52. Download Link: <a href="https://cansonic.com/pages/iq-player">https://cansonic.com/pages/iq-player</a>   |
| Video files jump when they are being played                                 | The memory card that we recommends for best quality is the UHS type 3 Max Endurance Micro SD Card.<br>If your PC does not recognize the video files, try another PC to view the recorded video.  |
| The total video recording time is only a few minutes long                   | You may have a small amount of available space left for your memory card. Back up all the files you need from the memory card. Only AFTER you back up all the files you need, format the memory card with UltraDash Z3+C.  |
| I cannot save my video files to my computer through the USB storage feature | The functions have been optimized to work properly with both PC and Mac computers. Please reboot your computers. Make sure UltraDash Z3+C is connected properly.   |
| UltraDash Z3+C shuts down on its own  | Auto power off function will turn off Z3+C automatically after it loses its power supply. Make sure Z3+C is connected properly to the car power cable.   |
| UltraDash Z3+C does not charge in my car                                    | If your car power cable is not working properly with your UltraDash Z3+C, check your car's power fuses. Also check your power cord and replace it if there is an issue.  |



|   |  |
|---|--|
| Micro SD Card is not letting me view my files                                       | Try some different card readers and computers to see if any of them can view the files. If none of them work, the files are probably damaged. Use Z3+C to format the memory card. (WARNING: formatting the memory card will remove all the files saved), We recommended using the branded UHS 3 Max Endurance Micro SD Card. Note: You must format the memory card with UltraDash Z3+C for first time use. |
| I cannot delete the file on UltraDash Z3+C  | Be sure the file you are trying to delete is unprotected. If the file is protected, please follow the instruction on page 35 to unprotect the file first, and then delete the file.  |
| My screen turns off after I just turned it on                                       | The screen saver function turns off the screen after a period of inactivity. If you want to turn off this function, go to VIDEO menu -> Screen Saver, and turn it off.   |
| The message "Please Format SD Card" appears on my screen                            | UltraDash Z3+C requires formatting the Micro SD card if the card is used on Z3+C for the first time. Please format the SD card in the SETUP menu.  |
| UltraDash Z3+C does not charge  | Be sure the power cord is connected properly. When Z3+C is being charged, the blue LED indicator will illuminate.  |
| A "Card Error" message appears on my UltraDash Z3+C                                 | This indicates that the Micro SD card is not properly formatted to your UltraDash Z3+C. Please remove the files you would like to keep on to your PC, and perform a "Format SD Card" procedure to allow your memory card to function properly with Z3+C.   |
| A "Card Full" message appears on my UltraDash Z3+C                                  | When this message appears, your Micro SD card is at full capacity. Reminder: When you have protected files, you limit the use of your memory card. Delete unnecessary files to allow maximum use of your memory card.  |
| UltraDash Z3+C always turn on by itself.  | The parking mode function will automatically start recording a 30 second video clip and turn off when external forces are detected. If you want to turn off this function, go to VIDEO menu -> Parking Mode Sensor, and turn it off.   |
| I press the MENU button but nothing happens   | Reminder: UltraDash Z3+C will not let you access the menu while it is recording. To access the menu, stop recording and the MENU feature will be accessible.   |
| When I download files from the Canonic website a malicious software message appears | If this message appears, simply adjust your browser settings and allow for the download to proceed. Once complete, reset your browser security to protect your PC.   |

|                   |  |
|-------------------|--|
| Unresolved Issues | <p>If you continue to have problems with your Cansonic UltraDash Z3+C, please reset your camera to default settings in the setup menu and begin the process over again.</p> <p>If these problems remain, please describe your question and send it to <a href="mailto:service_usa@cansonic.com">service_usa@cansonic.com</a> or call our customer service number provided on the Cansonic Website.</p> |
|-------------------|--|

## Appendix

### Wireless Link Specification

|                 |                       |
|-----------------|-----------------------|
| Standard        | IEEE802.11n           |
| Security        | WPA2                  |
| Frequency Range | 2400–2483MHz ISM band |
| Transfer Rate   | 150Mbps (802.11n)     |
| Output Power    | 9.46dBm±2dB (802.11n) |

### GPS Specification

|                 |              |
|-----------------|--------------|
| Frequency Range | 1559–1610MHz |
|-----------------|--------------|



### FCC Warning

This device complies with part 15 of the FCC rules. Operation is subject to the following two conditions: (1) this device may not cause harmful interference, and (2) this device must accept any interference received, including interference that may cause undesired operation.

Changes or modifications not expressly approved by the party responsible for compliance could void the user's authority to operate the equipment.

### FCC NOTE

This equipment has been tested and found to comply with the limits for a Class B digital device, pursuant to part 15 of the FCC Rules. These limits are designed to provide reasonable protection against harmful interference in a residential installation. This equipment generates uses and can radiate radio frequency energy and, if not installed and used in accordance with the instructions, may cause harmful interference to radio communications. However, there is no guarantee that interference will not occur in a particular installation. If this equipment does cause harmful interference to radio or television reception, which can be determined by turning the equipment off and on, the user is encouraged to try to correct the interference by one or more of the following measures:

- Reorient or relocate the receiving antenna.
- Increase the separation between the equipment and receiver.
- Connect the equipment into an outlet on a circuit different from that to which the receiver is connected.

- Consult the dealer or an experienced radio/TV technician for help.
- Radiation Exposure Statement
- This equipment complies with FCC radiation exposure limits set forth for an uncontrolled environment. This equipment should be installed and operated with minimum distance 20cm between the radiator and your body.

CE-RED  
RED2014/53/EU

Declaration of Conformity

Hereby, CANSONIC INC. declares that this Dash cam product is in compliance with essential requirements and other relevant provisions of Directive 2014/53/EU. A copy of the Declaration of conformity can be found at [www.cansonic.com](http://www.cansonic.com).

Frequency range:

2.4G Frequency range: 2412–2472MHz, Maximum E.I.R.P: 9.95dBm

The device complies with RF specifications when the device used at > 20mm your body.





**Instagram:** @cansonic\_usa



**Facebook:** @cansonicusa



**Youtube:** Cansonic USA



**Official:** [www.cansonic.com](http://www.cansonic.com)

**Product Name:** Dash Cam

**Model:** Z3+C

**Manufacturer:** Cansonic Company Limited

**Address:** 3/F, Building 1, Guanlan Automotive–electronics Characteristic Industrial Park, Shenliang Group, No.299 Guanping Road, Guanglan Town, Longhua District, Shenzhen

---

**Subject to change disclaimer:**

While Cansonic has made every effort at the time of publication to ensure the accuracy of the information provided. Images displayed on this manual are for illustration purposes and intended to help illustrate how the function operates and are not indicative of actual relative differences. Errors and omissions excepted. Product design, product specifications, availability are all subject to change without notice.

---