

Issues related to usage

- During the shut off procedure, please DO NOT remove Micro SD card immediately, to avoid damaging to the recorded video.
- Original connection cable is required. Use none original connection cable will void the warranty.

Issues related to battery

- Please recycle the battery according to the local regulation.
- Please DO NOT change the battery. Improper battery replacement might cause explosion!
- Please DO NOT disassemble the camera unit and the mobile charge cable.
- Please DO NOT short the battery.
- For the battery, please DO NOT expose to high temperature environment (such as direct sunshine or fire baking), to avoid explosion.
- Please DO NOT put the battery into fire to avoid explosion.

Issues related to the Micro SD card

- Please use Class 6, 8GB (and above) Micro SD card (maximum can support up to 32 GB).
- Use Micro SD card for the first time, please format the Micro SD card on the PC to ensure the reliable performance.

The function might be different by region, please follow the product you purchasd.

Package Content



1.Video camera

2.Bracket of video camera

3.Power adaptor

4.micro USB cable

5.Bike mount

6.Bike stem strap

7.Strap fixing pad

8.Fixture screw

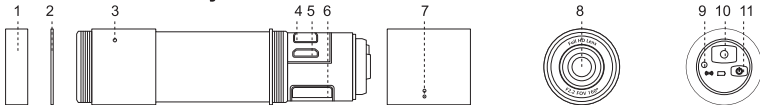
9.Adhesive pad

10.Tripod mount

11.User manual

12.Warranty card

Introduction of main body



1.Lens protection cap

2.Lens protection shield

3.Microphone

4.Micro HDMI interface

5.Micro USB interface

6.Micro SD card slot

7.Speaker

8.Lens

9.LED indicator

10.Functional button

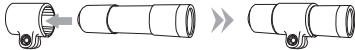
11.Power switch

Bicycle installation

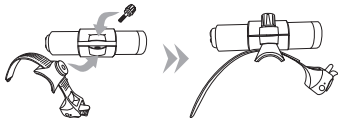
① Thread the bike stem strap through the slot of bike mount.



② Install the video camera onto the bracket of video camera.

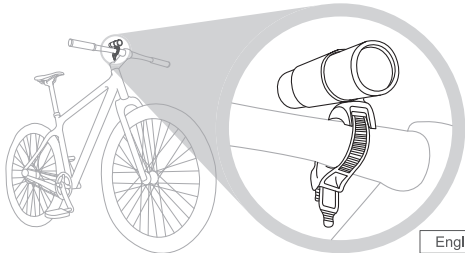


③ Attach the ① bike mount and ② bracket of video camera with fixture screw.



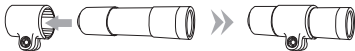
④ Place the strap fixing pad on the bike stem on the video camera installation location, with the grooved stripe side wrapped around the stem.

⑤ Place ③ video camera unit on top of strap fixing pad, then thread the strap through fixing slot, and fasten to secure the camera unit.

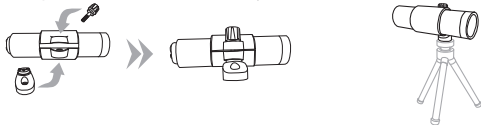


Tripod installation

① Install the camera onto the bracket of video camera.



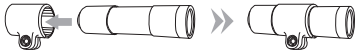
② Attach the ① bracket of video camera and tripod mount with fixture screw.



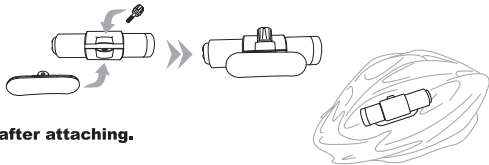
③ Mount the ② video camera unit onto the tripod to complete the installation.

Helmet installation

① Install the video camera onto the bracket of video camera.



② Attach the ① bracket of video camera and adhesive pad with fixture screw.





※ **For better adhesive effect, please don't move in 24 hours after attaching.**



Software download

- iOS user can search "GoLife Extreme" in App Store
- Android user can search "GoLife Extreme" in Google Play




Power on / off

- While in power off, press the "" button shortly, with a beep sound, the video camera will be powered on.
- Long press the "" button, with two beep-beep sound, the camera will be powered off.

For video recording

- While in power on, press the "" button shortly, then it will start the video recording (• red LED will be lighted).
- Press the "" button again will stop the video recording.

WiFi connection

- ① While in power on, press the "" for 3 seconds, it will start the WiFi function ( blue LED will be flashed). Press the "" button again for 3 seconds, it will shut off the WiFi connection.
- ② After the WiFi connection is enabled, go to the mobile phone end to setup WiFi, select "PAPAGO", then confirm the connection.
- ③ Restart the GoLife Extreme, to preview the operations.

User Manual Warning :

FCC Mark Warning :

This device complies with FCC Rules Part 15. Operation is subject to the following two conditions:

- This device may not cause harmful interference, and
- This device must accept any interference received, including interference that may cause undesired operation.

This equipment has been tested and found to comply with the limits for a class B digital device pursuant to part 15 of the FCC Rules. These limits are designed to provide reasonable protection against harmful interference in a residential installation.

This equipment generates, uses and can radiate radio frequency energy and, if not installed and used in accordance with the instructions, may cause harmful interference to radio communications.

However, there is no guarantee that interference will not occur in a particular installation.

If this equipment does cause harmful interference to radio or television reception, which can be determined by turning the equipment off and on, the user is encouraged to try to correct the interference by one or more of the following measures:

- Reorient or relocate the receiving antenna.
- Increase the separation between the equipment and receiver.
- Connect the equipment into an outlet on a circuit different from that to which the receiver is connected.
- Consult the dealer or an experienced radio/TV technician for help.

FCC Exposure Statement :

This equipment complies with RFCC radiation exposure limits set forth for an uncontrolled environment .

This equipment should be installed and operated with minimum 20cm between the radiator and your body.