

User Manual

Product Name : High Resolution Car Recorder

Model No. : CR56

Applicant : SanJet Technology Corp.

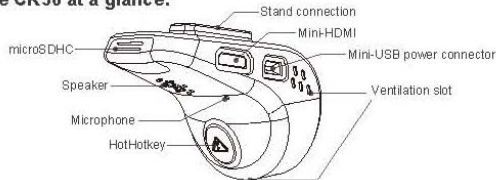


CR56 User Manual

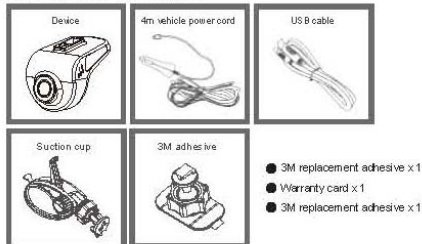
CR56 Smart HD Dashboard Camera Installation Guideline

Thank you for purchasing the CR56 Smart HD Dashboard Camera. Please read these guidelines carefully and pay attention to all the precautions contained within for successful operation.

The CR56 at a glance:



Items included with the CR56:



For iOS devices

Apple iPhone users should ensure they are running iOS 5.0 or above. Please check your iOS edition by clicking **Settings** → **General** → **About This Machine**. Please note that the CR56 VicoViewer app is only supported on iOS 5.0 or above.

Step 1: Download the VicoViewer app



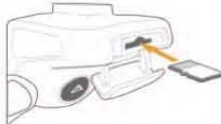
Please follow the steps below to search for and download the VicoViewer app from the Apple App Store:

Note: Downloading the app via your smartphone's 3G connection may subject to extra charges on your smartphone bill. Please be mindful of your data plan and 3G data usage before downloading via 3G. Alternatively you may download the app via Wi-Fi instead.



Step 2: Insert the micro SDHC card and switch on the CR56

Please insert your micro SDHC memory card before turning on the CR56 device. The system will prompt you with a voice message and automatically enter recording mode after powering on.



Note: Insert the micro SDHC card with the gold contacts facing up. Please only use Class 10 micro SDHC memory cards.

Step 3. Select the Wi-Fi connection

After the CR56 has powered on and entered recording mode, the device takes about 20 seconds to activate the built-in Wi-Fi connection. Please wait patiently. Open the Wi-Fi function by clicking the **Settings** icon on your iPhone and selecting the AP connection for the CR56:



Note: 1) The Vico-WF1 CR56 connection has an effective distance of 2-3 meters. Please DO NOT attempt to use it from distances further than this.
2) The CR56 can connect to a maximum of two concurrent users.

Step 4. Open the VicoViewer app

For Android devices

Android smartphone should ensure they are running Android 4.0 or above. Please check your Android edition by clicking **Settings** → **About** → **Software Information**. Please note that the CR56 VicoViewer app is only supported on Android 4.0 or above.

Step 1: Download the VicoViewer app



Please follow the steps below to search for and download the VicoViewer app from Google Play:

Note: Downloading the app via your smartphone's 3G connection may subject to extra charges on your smartphone bill. Please be mindful of your data plan and 3G data usage before downloading via 3G. Alternatively you may download the app via Wi-Fi instead.



Step 2: Insert the micro SDHC card and switch on the CR56

Please insert your micro SDHC memory card before turning on the CR56 device. The system will prompt you with a voice message and automatically enter recording mode after powering on.



Note: Insert the SD card with the gold contacts facing up. Please only use Class 10 micro SDHC memory cards.

Step 3. Select the Wi-Fi connection

After the CR56 has powered on and entered recording mode, the device takes about 20 seconds to activate the built-in Wi-Fi connection. Please wait patiently. Open the Wi-Fi function by clicking the **Settings** icon on your smartphone and selecting the AP connection for the CR56.



Step 4. Open the VicoViewer app

Summary of the VicoViewer app functions: ★ Live Streaming Preview

Use the function key on the left to connect the CR56 to the VicoViewer app. After the connection is established, video will be displayed to allow the shooting angle to be adjusted. Please loosen the support nut before adjusting the device.



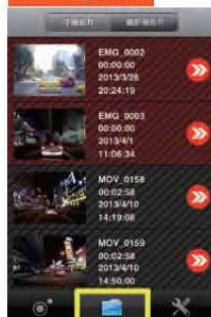
You may also use your smartphone in landscape mode; the video will rotate automatically.

Special notes:

For instant image previews in the app, the video is streamed to your smartphone via Wi-Fi at a lower resolution (QVGA 320x240). This differs from the actual recording resolution (Full HD 1080p). Please note that the actual resolution differs from what is seen in the preview mode.

The actual video resolution stored on the microSDHC card is 1080p or 720p (depending on your settings; the default is 1080p).

★ Playback

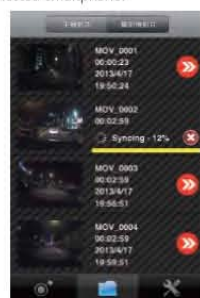


Select the folder buttons at the bottom of the screen for playback. You may select videos saved in the CR56 device and send them to your smartphone.

Emergency recording data (highlighted in red) is displayed in the upper part of the screen. There are up to 15 emergency recording files available. After all 15 emergency recording files are used, files must be deleted or backed up in order to free up space.

Swipe files up or down to select them for playback and to download them to your smartphone's memory.

Select the desired video and then click the **Save** button in upper-right corner to upload it to the connected smartphone.

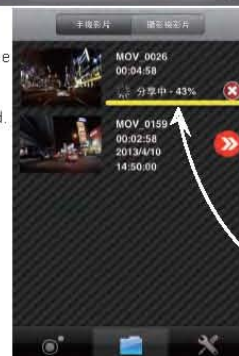


Select files to download and the app will display the download progress.

★ Upload file to Facebook/YouTube



You can adjust the playback time, and select fast forward or rewind.



Click on the Facebook or YouTube icon in the upper-right corner to share recording files downloaded to your smartphone. To proceed, please disconnect your smartphone from the Vico Wi-Fi AP and upload via 3G or over a Wi-Fi network.

Displaying uploading status.



please enter your Google/Facebook account username and password the first time you log in.
VicoCenter helps the VicoViewer app transfer videos to Facebook and YouTube for sharing.



★ Camera Settings



Use the function key on the right to set up:

- ⊗ Camera
- ⊗ System
- ⊗ Collision Detection
- ⊗ Emergency Email Alerts
- ⊗ Lane Departure Warning System
- ⊗ System Information

Recording format:

1080p/30fps (default); 720p/ 60fps; 720p/30fps

Exposure settings:

Select +1 / +0.5 / 0 / -0.5 / -1. This can be fine-tuned to compensate for the color of your vehicle's thermal insulation film.

Special notes:

There are 15 emergency recordings. [The oldest one will be overwritten once all 15 recording spaces are used. Please back up or delete old recordings](#) when prompted by the voice message "the emergency recording files are full".

★ System Settings:



Time zone setup:

Synchronize the CR56 time with your smartphone or manually configure the device system time.

Function setup:

You may set auto recording to ON (default) / OFF; mute/unmute audio; overlay the video time text ON (default) / OFF; and set up a personalized Vico-Tag.

An eight character personal **Vico-Tag** (default "Vico-WF1") can be added to the right side of the time in the lower-left corner of the recorded image.

Wi-Fi settings:

Change the CR56 Wi-Fi SSID AP name. The default value is "Vico-WF1". You can also change the 802.11n wireless channel. There are 11 channels available to choose from. The default value is "Auto".

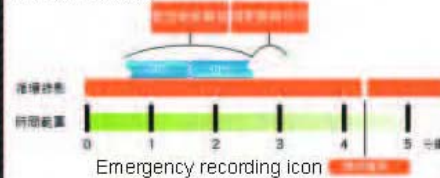
Note 1: Wireless channel settings can be changed to avoid interference with neighboring wireless devices. This may be required when the Vico-WF1 is installed indoors close to other wireless devices. The default "Auto" value is recommended for use in vehicles.

Note 2: The 802.11n wireless frequency differs from those used by vehicle GPS devices. The Vico-WF1 can thus be used freely without risk of interference. CR56 is CE/FCC/BSMI certified, as well as an NCC-certified electronic device.

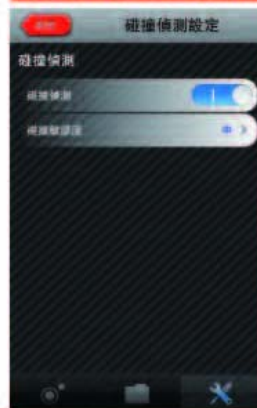
Note 3: Please note that changes made to the Wi-Fi settings (including the SSID name, the Wi-Fi channel, and/or the emergency email forwarding in AP mode) may take up to one minute to take effect after exiting back into recording mode. Other settings take effect immediately upon exiting back into recording mode.



Reset: Reset the CR56 back to its factory defaults by formatting the microSDHC card. Please remember to first back up any important recording data before formatting the card. **Please format the microSDHC card once a month to defragment the card after repeat recordings and improve access efficiency.** Voice messages will default back to English the first time after the system powers on following a master reset. The CR56 will retain the same language as your smartphone (English/Chinese) until the device and the app are next connected.



★ G-Sensor Settings



In case of a collision during driving, the collision sensor will trigger an emergency recording to ensure that the accident files are kept without being overwritten. The Collision Detection settings control the built-in G-sensor (ON/OFF). Open the Collision Detection settings and set the collision detection sensitivity. The default value is 'Medium'. When emergency recording is triggered, the Vico-WF1 saves important footage 30 seconds before and after the collision in the emergency event folder on the microSDHC card. There are 15 file spaces available for use.

Please note that the G-sensor is turned OFF by default.

Special notes:

There are 15 emergency recordings. **The oldest one will be overwritten once all 15 recording spaces are used. Please back up or delete old recordings** when prompted by the voice message "the emergency recording files are full".

★ Email Alert Settings:

The Email Alert function sends a notification email to a given address through your smartphone in case of an emergency (this can be triggered both manually and via the collision sensor). The default value is OFF.

Smartphone AP name (Wifi SSID): Please enter the SSID network name for your personal Wi-Fi (AP) connection.
Wifi password: Please enter the password for your personal Wi-Fi (AP) connection.



★ Please note before enabling this function:
The CR56 device enters Client/Slave mode after the Email Alert function is activated. The CR56 device employs your smartphone as a Server/Master AP to send the emergency email. Please restart the CR56 to resume normal operation.

★ The original CR56 connection is lost after this function is enabled. Note: Please open your smartphone's personal hotspot function and connect the CR56 to your smartphone before opening the VicoViewer app for this operation.
Please keep smartphone's hotspot (AP mode) and Wi-Fi functions on while using this feature. In case of any setup or operation issues, please press and hold the hotkey for eight seconds to reset the CR56 to its factory default settings.

★ Email Alert Smartphone Settings:



The Email Alert function uses your smartphone as a Server/Master AP for emailing, therefore you must first have the hotspot and Wi-Fi functions on. Please refer to your smartphone manual for how to enable the hotspot (AP mode / portable Wi-Fi base station) in order to set up the VicoViewer.

Please restart the CR56 after activating this function. The CR56 enters Client/Slave mode to search for your smartphone hotspot after being restarted. The Wi-Fi Email Alert function sends a notification email to a given address through your smartphone in case of an emergency (this can be triggered both manually and via the collision sensor).

Please note that in this mode the Wi-Fi setup will not detect the CR56 AP. Please note that you can only open and use the app after the CR56 has connected to your smartphone hotspot.

Please carefully type the SSID and password of your smartphone hotspot. If connection to your smartphone cannot be established after the CR56 has restarted, press and hold the hotkey to reset the device back to its factory default settings. In case of any setup or operation issues, please press and hold the hotkey for eight seconds to reset the CR56 to its factory default settings.

★ Lane Departure Warning System Settings:



The CR56 supports a Lane Departure Warning System (LDWS) alert function. This function uses a voice reminder in case of lane departure while driving so as to ensure your safety.

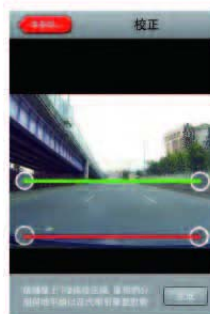
Please ensure that the support is adjusted and tightened, and that the image is aligned before opening the LDWS function. Press the Alignment key and then align the two baselines with the horizon and the vehicle hood.

You can choose to have a voice reminder or an alarm, as well as adjust the LDWS sensitivity (High / Medium / Low).

Single Hotkey ON and OFF:
Press and hold the hotkey for two seconds to toggle the LDWS function ON / OFF during normal recording. The system will prompt you with a voice message to confirm the change.

Recommendation:
We recommend you turning the LDWS function off while driving in metropolitan areas and turning it on for long-distance highway driving.

Check Baseline:
Please realign the LDWS baselines anytime you change the camera angle.



Note:
Please note that the LDWS may stop functioning at night or in low-light environments. This is normal.

Please align the green baseline with the horizon and the red baseline with the vehicle hood.

★ System Information:



The System Information page displays information about the device and the app.

The Facebook option enables you to log in to your Facebook account to download videos to your smartphone and to upload videos to Facebook for sharing.

The YouTube option enables you to log in to your Google account to downloading videos to your smartphone and to upload videos to YouTube for sharing.

The Camera Status page displays the device firmware version, the microSDHC card capacity, the temperature, and the factory calibration data.

★ Voice Notification information:

The Vico-CR56's built-in voice messages are in English by default. The VicoViewer app will automatically change the CR56 language to match your smartphone interface language. If the smartphone interface language is in Chinese, then the CR56 will first remind you in English before switching to Chinese after the first connection.

Chinese	English	Description
1. System is starting	System started	Host startup prompt
2. Recording is starting	Recording started	Recording startup prompt
3. Emergency recording startup	Emergency recording started	Emergency recording triggered by the collision sensor and the manual trigger
4. System is about to close	System shutting down	Host shutdown prompt
5. WiFi connecting	WiFi connected	Smartphone app open and connection prompt
6. WiFi is disconnecting	WiFi disconnected	App offline prompt
7. Start LDWS	Lane Departure Warning System enabled	Press and hold the holkey for two seconds and then release it
8. Close LDWS	Lane Departure Warning System disabled	Press and hold the holkey for two seconds and then release it
9. Station, lane departure reminder	Warning! Lane departure	Lane departure prompt
10. Reset to factory defaults	Reset to factory defaults	Press and hold the holkey for eight seconds to reset to the factory defaults
11. High temperature, recording disabled	High temperature, recording disabled	Protection is enabled when the device is turned on and the ambient temperature is above 65 degrees Celsius
12. Return to normal operating temperature	Normal operating temperature restored	Resume after temperature drop
13. Memory card error, recording disabled	Memory card error, recording disabled	Memory card not found on the memory card has failed. Please format your memory card with your computer
14. Emergency recording full	Emergency recording full	All 15 emergency recording files have been used. Please back up and delete some of the files.

★ Video footages Playback

The CR56 employs H.264 compression and generates files with an .mp4 extension. The built-in media player on most Microsoft Windows computers (e.g. Windows Media Player) does not support H.264 files and so playback may fail or appear corrupted (e.g. garbled, lagged, missing images, unsynchronized audio etc.). If you encounter any of these problems, please try downloading other free media players instead.

Video files generated by the CR56 are 1080p (1920x1080) at 30 fps. These files place very high demands on your computer graphics cards, memory and CPU. If playback quality remains poor even when played from your computer hard disk with a media player that supports H.264 files, then you may need to upgrade your computer hardware.

Note:
The brightness and sharpness of video images may vary with the color of the thermal insulation film in your vehicle. You can adjust the CR56's exposure value for better quality if the image looks fuzzy or unclear (as a result of low light caused by dark insulation film).

Recording time span (emergency recording time excluded)

Resolution \ Memory capacity	8GB	16GB	32GB
1080p/30fps	100 Minutes	220 Minutes	450 Minutes
720p/30fps	180 Minutes	375 Minutes	775 Minutes
720p/60fps	140 Minutes	300 Minutes	620 Minutes

User Manual Warning :

FCC Mark Warning :

This device complies with FCC Rules Part 15. Operation is subject to the following two conditions:

- This device may not cause harmful interference, and
- This device must accept any interference received, including interference that may cause undesired operation.

This equipment has been tested and found to comply with the limits for a class B digital device pursuant to part 15 of the FCC Rules. These limits are designed to provide reasonable protection against harmful interference in a residential installation. This equipment generates, uses and can radiate radio frequency energy and, if not installed and used in accordance with the instructions, may cause harmful interference to radio communications. However, there is no guarantee that interference will not occur in a particular installation.

If this equipment does cause harmful interference to radio or television reception, which can be determined by turning the equipment off and on, the user is encouraged to try to correct the interference by one or more of the following measures:

- Reorient or relocate the receiving antenna.
- Increase the separation between the equipment and receiver.
- Connect the equipment into an outlet on a circuit different from that to which the receiver is connected.
- Consult the dealer or an experienced radio/TV technician for help.

FCC Exposure Statement :

This equipment complies with RFCC radiation exposure limits set forth for an uncontrolled environment .

This equipment should be installed and operated with minimum 20cm between the radiator and your body.