

Betta® SE PLUS

Smart Pool Skimmer

Owner's Manual

2025 and Later Versions



www.BettaBot.com

888-692-3882 (888-MyBetta)

562-579-0001

info@BettaBot.com



1. Important Safety Instructions

- The Betta SE Plus (Model 2025 and later) can be charged via solar power while the device is either powered ON or OFF, and by adapter when it's powered OFF.
- DO NOT SWIM while the Betta is in operation. Remove it from the pool and store it in a cool, shaded area when the pool is in use.
- The Betta Smart Pool Skimmer is not a toy. Keep it out of reach of children.
- Be cautious when working near the pool. Watch your steps and maintain balance.
- The Betta may not function with wired underground pool cleaners. Refer to section 4.7 of this manual for a solution or try adding hose/wire weights to keep them off the surface. During swimming season, keep Betta in the pool unless the pool is in use or the unit requires cleaning or maintenance.
- Do not leave Betta in a hot, dry area outside of the pool unattended to prevent damage or hazards. Refer to section 4.5 for Fall/Winter handling exceptions.
- Do not clean the Betta using a pressure washer to avoid damaging the unit.
- Betta SE Plus is incompatible with infinity pools. Please check future Betta models for compatibility.
- Regularly check the debris basket based on your estimate of when it may be full. Betta does not have an LED indicator to signal when the basket is full.

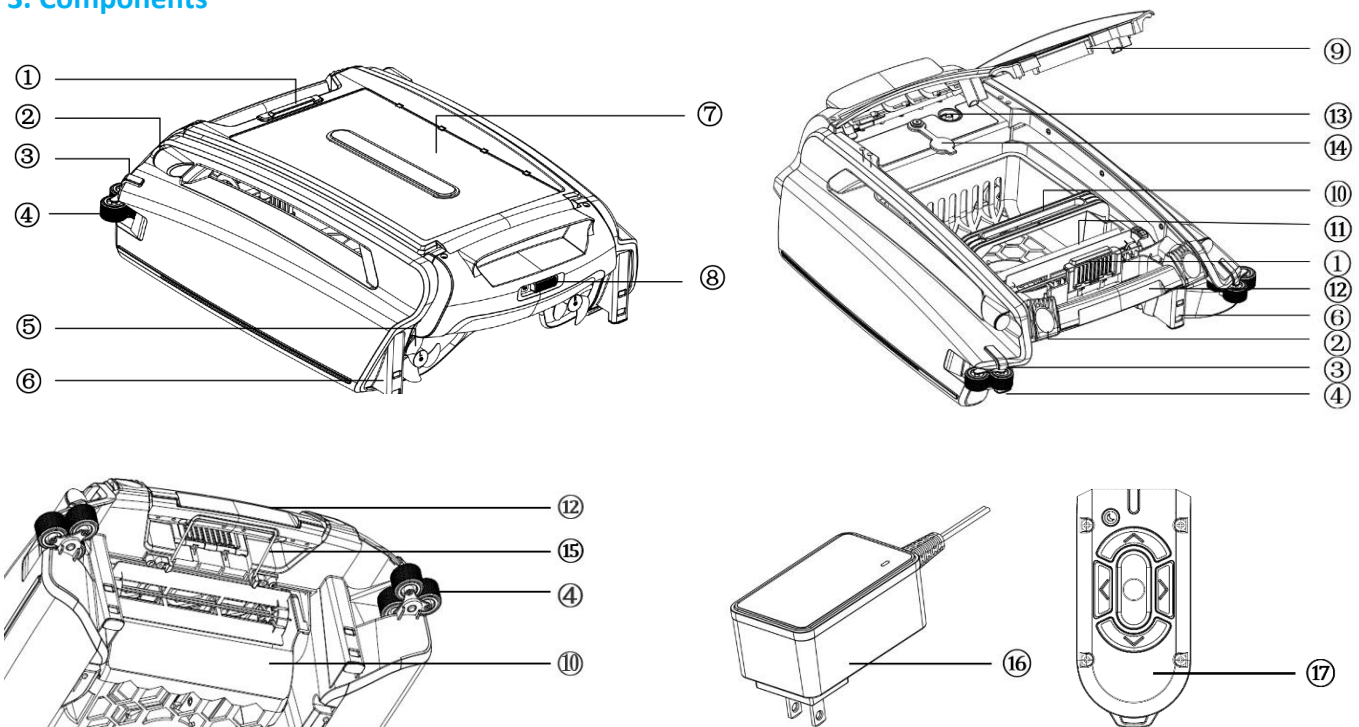
2. About Betta SE Plus

Thank you for purchasing the Betta Solar-Powered Robotic Pool Skimmer. When properly maintained and cared for, Betta will provide you with years of reliable service. Be sure to read all the instructions in this manual to fully understand how to use and care for your unit.

Betta is an intelligent pool skimmer that operates primarily on its own. It functions as a surface cleaner/skimmer for your pool and is powered by built-in rechargeable batteries, either by a solar panel, or by a power adapter. Betta is fully autonomous but can also be controlled manually using the included remote. It features a control board and various sensors, including a gyroscope, to navigate the pool surface efficiently.

The unit collects floating debris in its path, which is stored in a removable collection basket inside. Typically, you will need to empty the basket and clean the unit every 3-4 days, though sometimes as frequently as every 1-2 days. To do so, simply remove the unit from the pool, empty the basket, and clean the unit using a water hose. Once cleaned, place the Betta back in the pool, and it will resume its operation automatically.

3. Components



Parts List

- | | |
|----------------------------|------------------------------|
| 1. Cover Lock | 9. Cover |
| 2. Distance Measure Sensor | 10. Debris Collection Basket |
| 3. LED Status Indicator | 11. Debris Intake Impeller |
| 4. Guide Wheel | 12. Handle |
| 5. Propeller | 13. Charging Port |
| 6. Anti-stranding Bar | 14. Charging Port Cover |
| 7. Solar Panel | 15. Anti-Tangle Mechanism |
| 8. Power Switch | 16. Charging Power adapter |
| | 17. Remote Control |

4. Using Betta SE PLUS for the first time

4.1 Using the unit for the first time

Attention:

Be sure to watch your steps and maintain your balance when working by the pool side.

- **Step 1:** Slide the power switch to the "ON" position. The LED status indicators at the front will flash, and the propellers and impeller will begin to run.
- **Step 2:** Place the Betta into your pool, and it will automatically start moving and cleaning the pool's surface.

Operation Modes:

Betta operates in three modes: **Auto Mode**, **Sleep Mode**, and **Remote Control Mode**.

- **Auto Mode:**

Betta is fully self-driving, using its sensors to guide its movements and manage operations, including charging. By default, Betta operates in Auto Mode unless controlled by the remote. In this mode, the lights on Betta will flash normally, indicating it's functioning autonomously.

- **Sleep Mode:**

To conserve battery energy, you can activate Sleep Mode by pressing the Sleep button on the remote control. In this mode, Betta will continue to seek solar charging and move itself to optimal positions, but its operations are reduced. The lights will glow and fade slowly, indicating Sleep Mode.

- **Remote Control Mode:**

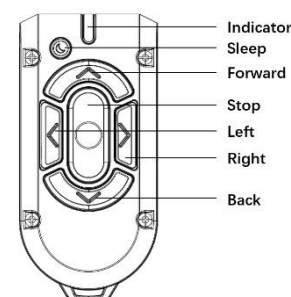
When needed, you can manually control Betta's movement and path using the included remote control. Remote Control Mode allows for quick navigation, giving you precise control of Betta's location. In this mode, the lights on Betta will remain solid green.

4.2 Remote Control

Using the Remote Control:

Your remote control should work right out of the box as it has already been paired with your Betta unit at the factory. Pairing is only necessary if the remote control does not function or if either the Betta SE Plus unit or the remote control has been replaced.

- **Moving Forward/Backward/Stop:** Simply press the Forward, Backward, or Stop button once to control Betta's movement. The lights on Betta will remain solid green.
- **Turning Left/Right:** While Betta is moving forward, backward, or is stopped, press and **hold** the left button to turn left, or press and **hold** the right button to turn right. The lights on Betta will remain solid green during this operation.
- **Returning to Auto Mode:** To switch Betta back to Auto Mode, press and hold the Stop button for 2 seconds. If the remote control is not used for 2 minutes, Betta will automatically return to Auto Mode. In Auto Mode, the lights will begin flashing.
- **Sleep Mode:** While Betta is running, press the Sleep button (located on the upper left of the remote) once to enter Sleep



Mode. In this mode, Betta stops collecting debris but will continue moving to find optimal spots for solar charging. The lights will slowly glow and fade green. Press the Sleep button again to exit Sleep Mode.

Attention:

If Betta is not responding to the remote control (Betta's lights are not solid green), check the following:

- **Flashing Lights (Normal):** If Betta's lights are flashing normally but not responding to the remote control, you will need to pair the remote. Refer to the pairing instructions below.
- **Glowing and Fading Lights:** If Betta's lights are glowing and fading in Green, it is in Sleep Mode. Press the Sleep button once to exit Sleep Mode, then press any control button to start using the remote.
- **No Lights (Battery Depleted):** If Betta is completely out of battery (power switch is ON, but there are no indicator lights), place Betta in sunlight and allow it to charge by solar or charge with the power adapter

When the Betta is not responding to the Remote Control (Betta does not light is not turning to Solid Green), check the following:

- 1) If the Betta lights are flashing normally and not responding to the Remote control, you need to pair the Remote. See instructions below.
- 2) If the Betta lights are glowing and fading slowly, Betta is in **Sleep Mode**. Press **Sleep** button once, you may exit Sleep Mode and press any control button to start to use Remote.
- 3) When Betta is totally out of battery (the power switch is in ON position, but no lighting on the indicators). Place Betta into sunlight and wait for it's get charged or plug into the power outlet with the included power adapter

Pairing Betta with a New Remote:

The remote control included with Betta is pre-paired at the factory. You only need to follow the pairing steps if the remote does not work or if you have replaced it with a new one.

Pairing Instructions:

1. Slide the power switch to the "OFF" position to turn off the unit.
2. Slide the switch to "ON" to turn it back on.
3. Within 5 seconds of turning on the unit, press any button on the remote control.
4. After 5 seconds, test the remote by pressing the buttons to see if the unit is in Solid Green lights and responds and moves accordingly.
5. If the unit responds, the pairing is complete. If not, repeat the procedure from the beginning.

If you continue to experience issues with pairing, please contact Betta customer service for further assistance.

4.3 LED Light Status Indicator

The LED status indicators (one on each side at the front) display the unit's operation status and working conditions.

- **Auto Standard Mode:**
 - Lights: Flashing Green
 - Status: The unit has enough power and will continue running.
- **Intermittent Mode:**
 - Lights: Flashing Red
 - Status: The battery is low, and the unit operates intermittently as it attempts to find sunlight for recharging.
- **Low Battery Mode:**
 - Lights: All indicators are off
 - Status: The battery is very low or completely discharged.
- **Remote Control Mode:**
 - Lights: Solid Green
 - Status: The unit is being controlled manually using the remote control.
- **Strand Mode:**
 - Lights: Flashing Red and Green
 - Status: The unit's propellers or impeller are not functioning properly, likely due to an obstruction. The unit will stop

automatically but will attempt to restart every 20 minutes.

- **Sleep Mode:**
 - Lights: Slowly glowing and fading in Green
 - Status: The unit is in Sleep Mode. It stops collecting debris but will continue to seek sunlight for charging.

4.4 Use of Anti-stranding Bumper Bars

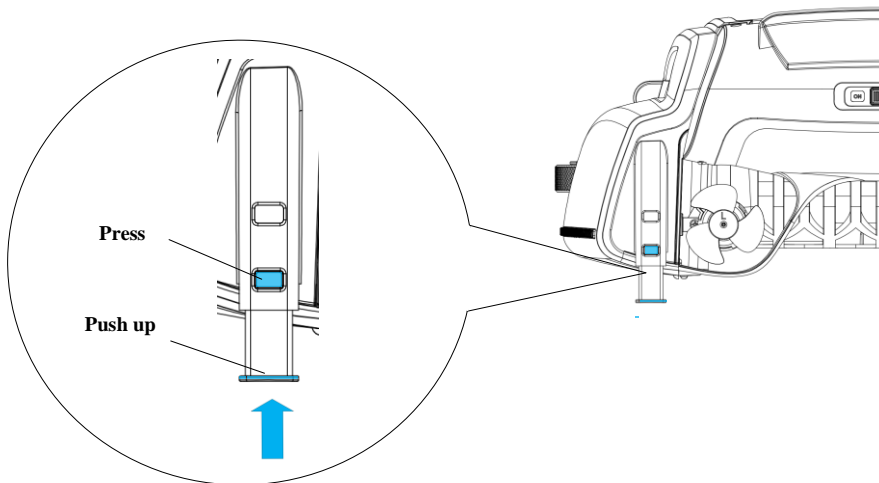
When to use:

If Betta gets stuck on shallow steps or other structures in your pool, you can adjust the built-in anti-stranding rods to resolve the issue.

How to use:

Press the upper button on the rod housing and pull down the rods. Each rod has two height settings. Adjust them in pairs—either both front rods or both rear rods—to maintain balance.

Retrieving the Anti-Stranding Bumper Rods: Press the lower button on the rod housing. Push the rods up until they are fully retracted into position. Repeat this step for each rod, one by one.



4.5 Battery Run Time and Charging during Fall/Winter

During the fall and winter, the sun's rays hit the Earth at a shallower angle. This causes the rays to spread out more, reducing the amount of energy that reaches any given spot. Additionally, the longer nights and shorter days prevent the Earth from warming up. As a result, solar charging efficiency is significantly lower during these seasons, and Betta's battery may not fully charge even on a sunny day. Therefore, you can expect Betta to have a shorter runtime compared to the summer.

Solutions:

- **Solution 1:** If the temperature drops below 68°F (20°C), remove the Betta skimmer from the pool. To charge the unit outside, position it at a 45-degree angle against a wall, directly facing the sunlight. Leave it to charge for a full day, adjusting the position as the sun moves.
- **Solution 2:** To conserve energy when debris collection is not necessary, set Betta to Sleep Mode. Simply press the Sleep button on the remote control.
- **Solution 3:** Charge the unit by power adapter. See section 4.6 below.

4.6 Charging by Adapter Instruction

Attention:

The unit must be turned OFF when charging by power adapter.

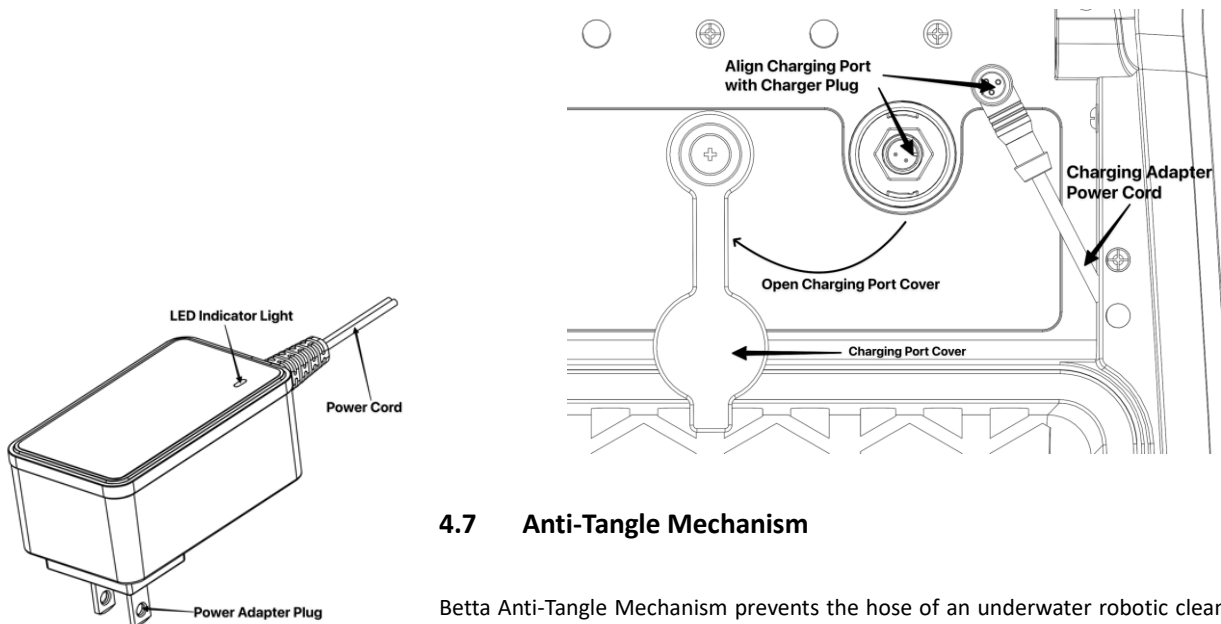
The charging adapter is included in the package. A red indicator light on the charger shows that the battery is charging, while a green light means the battery is fully charged, and the charger can be removed.

When to use:

When the machine's indicator light is flashing red or completely off, it needs to be charged.

How to use:

- Open the charging port cover as illustrated below.
- Remove the charger adapter from the packaging box.
- Turn the unit OFF.
- Align the charger plug with the charging port as shown in the diagram and insert it.
- Plug in the charger; the indicator will turn red, indicating the unit is charging.
- Once the indicator turns green, the battery is fully charged, and you can remove the charger.



4.7 Anti-Tangle Mechanism

The being simultaneously in the swimming pool.

Betta Anti-Tangle Mechanism prevents the hose of an underwater robotic cleaner from pulled into the debris basket by the Betta skimmer's impeller when both are operating

When to use: Typically used when a wired underwater robotic cleaner is in operation.

How to use: Rotate the metal guard strip downward to the front of the debris basket.



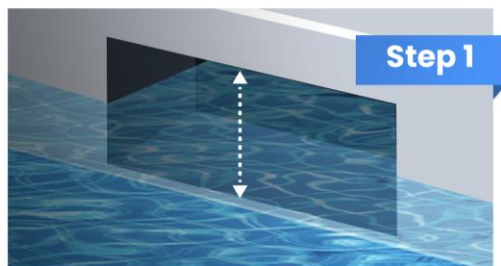
Attention:

- Rotate the metal guard strip upwards and store it in the slot beneath the handle when there is no wired underwater robotic cleaner operating in the pool.
- Do not use the strip as a handle, as it may break if you lift the Betta with it.

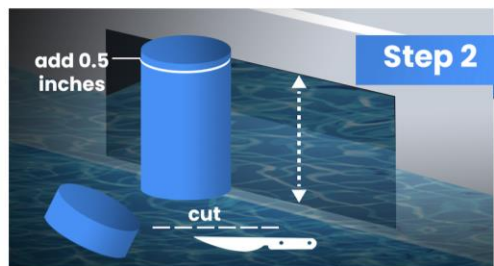


4.8 Using a Swimming Foam Noodle to Prevent Betta Getting Stuck at the Skimmer Port

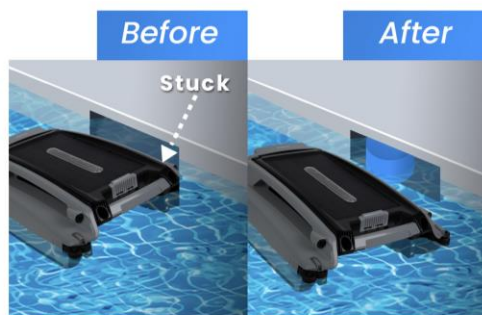
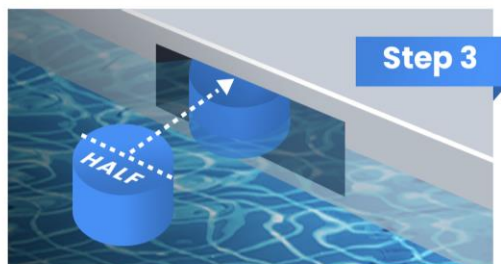
Measure the height of the skimmer port opening.



Cut the foam noodle to the desired length, adding 0.5 inches to the height of the skimmer port opening.



Insert the foam noodle tightly into the skimmer port opening, ensuring that approximately half of the foam noodle protrudes outside of the port.



5. Cleaning and Storage

Attention:

- Empty the debris basket before cleaning
- Always be cautious near the pool. Watch your step and maintain your balance while working by the poolside.
- Clean the debris collection basket every 2-3 days to keep Betta running at high efficiency.

Cleaning Steps:

- Use the remote or wait until Betta is near the shallow end of the pool where you can safely access it.
- Lift Betta carefully by keeping it flat, using both hands—one on the front handle and the other on the lift grip at the rear. This prevents debris from escaping the basket. Place Betta on a flat surface.
- Slide the power switch to the OFF position.
- Unlock the cover and lift the basket handle to remove the basket from the unit. Empty the debris.
- Rinse the basket with a water hose until it is completely clean.
- Return the basket to the unit, secure the cover, and turn the power back on.
- While cleaning the basket, you may also clean the solar panel. White residue on the panel is likely from pool water chemicals or minerals. Rinse it off with a water hose and wipe the panel with a soft, dry cloth. Do NOT use a pressure washer or any tools to scrape or brush the panel to avoid damage.

Winter and Long-Term Storage

If you are closing your pool for the winter, remove Betta from the pool. Rinse it with hose water, allow it to dry completely. Place it in a storage bag (Betta offers one, sold separately), and store it indoors at room temperature in a dry place, away from excessive heat. Before using it for the next season, inspect all parts of Betta for any signs of damage or issues. When ready, turn the power on and resume use.

6. Troubleshooting

Problem	Possible Cause	Action Steps
Not running at night	The unit is in Low Battery Mode. The status lights are off, indicating the battery level is very low or completely discharged.	Leave the unit in the pool. After sunrise, it will begin running at intervals to find spots with optimal sunlight for recharging. For faster charging, you can manually place it in direct sunlight.
Not running during the daytime	Scenario 1: The unit is in Intermittent Mode – the status lights are flashing in Red, indicating the battery is low.	You may leave it as is in the pool, the unit will run in intervals in attempts to locate sunlight where it can be recharged.
	Scenario 2: The unit is in Sleep Mode. The status lights are off, indicating the battery level is very low or completely discharged.	Try to place it in the spot that has direct sunlight in the pool and wait until it gets some charge.
	Scenario 3: The unit is in Strand Mode. Status lights are flashing in Red and Green indicating Betta is stuck at some structures, such as stairs, stools, or propeller/impeller is strapped by something.	<ul style="list-style-type: none"> • Please be patient and wait for a few minutes. The unit will try restarting every 20 minutes when it is in Strand Mode. • Ensure that the basket is in place, and the Cover Lock is properly secured. • Check propellers and Impeller for dirt, string, or hair.
	Scenario 4: Betta is in Sleep Mode. The lights on Betta is glowing and fading slowly when it's in Sleep Mode.	<ul style="list-style-type: none"> • Press the Sleep button on the Remote Control located on the upper left corner to exit the Sleep Mode.
Unit only runs a short time when sunlight is sufficient	1) The solar panel has residues. 2) Propeller or Impeller is strapped.	<ul style="list-style-type: none"> • Clean the solar panels. • Ensure propellers and Impeller are turning freely.
The unit is moving in circles	One or both propellers are trapped which makes the unit running unbalanced.	Check propellers and Impeller for dirt, string, and hair.
Can't be controlled by remote	If the light on remote control is not lit when press any button, remote control batteries are low.	Replace remote batteries (2x AAA).
	Remote unit is not paired with Betta.	Try pairing the remote control with Betta unit again.
	Betta may be in Sleep Mode when battery charge is extra low or completely discharged.	When sunlight becomes available, the unit will exit Sleep Mode and can then be controlled by remote.
No Battery or Short Running Time in Fall/Winter	The sunlight angle is shallow cause low solar charging efficiency. Also, the duration of sunshine is shorter.	Under certain weather condition, you may take the skimmer out of the water and put it in an angle facing the sunlight. You may also put the Betta in Sleep Mode for a period to reserve some energy. See instruction is 4.5 (Battery Run time and Charging during Fall/Winter). The ultimate solution is to charge it with the power adapter.

7. Warranty Information

Betta is designed for use in fresh/chlorine water or salt water with salinity levels up to 5000 P.P.M. The unit comes with a **1-Year Manufacturer's Warranty** from the date of purchase. Please note that using the unit in seawater pools will void the warranty. For any issues or concerns, contact us directly. Betta honors extended warranties ONLY through Betta Care. Any extended warranty offers from third-party retailers will not be serviced by Betta directly. If you have questions about the Betta warranty, please contact us at info@BettaBot.com or 888-692-3882.

Warranty Registration

scan the QR code below



www.bettabot.com/pages/warranty-registration

Extended Warranty (Betta Care)

scan the QR code below



www.bettabot.com/pages/warranty

8. Customer Service (Available 7 days a week via email, live chat, and phone)

Phone: 1-888-692-3882 (1-888-MyBetta) or 562-579-0001 | Fax: 562-579-0008

Live Chat: Available on any webpage at www.BettaBot.com

Email: info@BettaBot.com

FCC Statement

Any Changes or modifications not expressly approved by the party responsible for compliance could void the user's authority to operate the equipment.

This device complies with part 15 of the FCC Rules. Operation is subject to the following two conditions:

- (1) This device may not cause harmful interference, and
- (2) This device must accept any interference received, including interference that may cause undesired operation.

RF warning for Portable device:

The device has been evaluated to meet general RF exposure requirement. The device can be used in portable exposure condition without restriction.

Note : This equipment has been tested and found to comply with the limits for a Class B digital device, pursuant to part 15 of the FCC Rules. These limits are designed to provide reasonable protection against harmful interference in a residential installation. This equipment generates,uses and can radiate radio frequency energy and, if not installed and used in accordance with the instructions, may cause harmful interference to radio communications. However, there is no guarantee that interference will not occur in a particular installation. If this equipment does cause harmful interference to radio or television reception, which can be determined by turning the equipment off and on, the user is encouraged to try to correct the interference by one or more of the following measures:

- Reorient or relocate the receiving antenna.
- Increase the separation between the equipment and receiver.
- Connect the equipment into an outlet on a circuit different from that to which the receiver is connected.
- Consult the dealer or an experienced radio/TV technician for help.