

SHAPESCALE

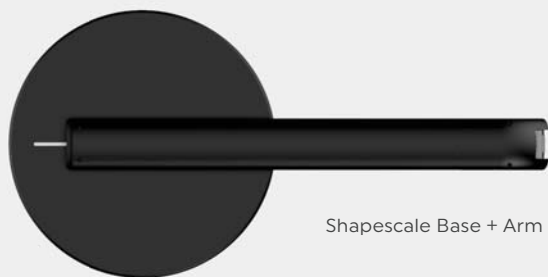


SCAN QR CODE TO GET STARTED

OR VISIT

[SUPPORT.SHAPESCALE.COM/GUIDE](https://support.shapescale.com/guide)

PACKAGE CONTENT



Shapescale Base + Arm



Shapescale Head



User manual



Carpet feet

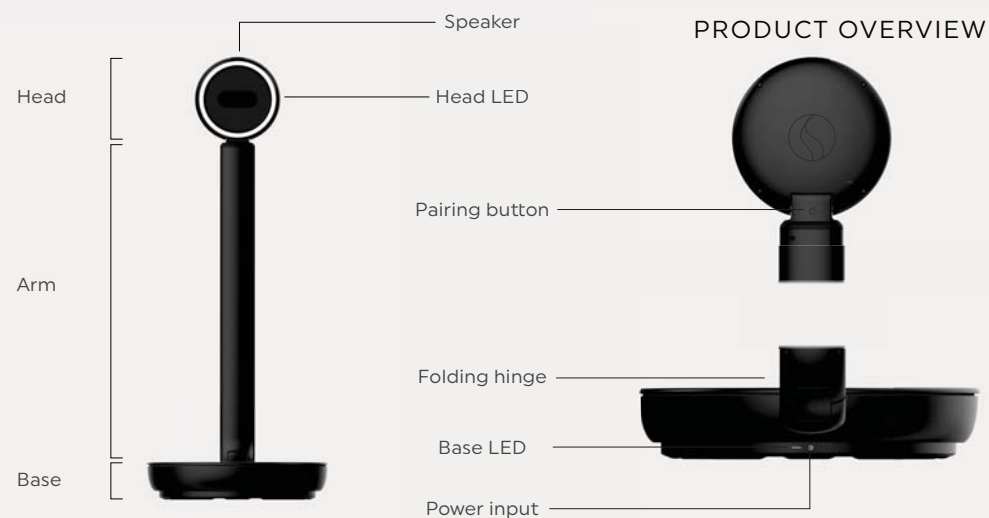


Power adapter

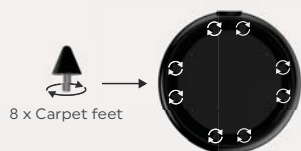


Power cord

PRODUCT OVERVIEW



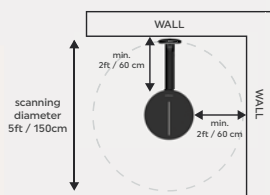
PRODUCT SETUP



If you want to use the scale on soft floor, please install the 8 carpet feet provided by screwing them in the base. If not you can skip this step.



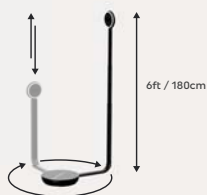
Avoid overly lit or dark location. Avoid placing the device in direct sunlight or in front of large windows or mirrors. If you experience issues with scans try moving it to another location.



Select a location that has proper clearance for the scanning motion. Do not place the device closer than 2ft / 60cm from a wall. Manually rotate the arm around the base to verify you have enough clearance.



Open the arm, until it is locked in open position.



The arm extend up to 6ft / 180cm, please make sure the ceiling height is higher than 6 ft and that no object may interfere with the trajectory of the arm while it extends.



Insert the head in the top of the arm until you can hear the click and the head is locked in place.

WIFI SETUP



Connect the scale to power, using the power supply provided.



Download and install the Shapescale App. In the Shapescale app, follow the onboarding or go into your Profile - Device - Device setup to start the pairing.



Head LED should be blinking blue indicating the device is in pairing mode.



Once you have followed the instructions in the app, the Head LEDs will turn to rotating rainbow. Indicating the device is connected to wifi and has internet connectivity.



If the device is not blinking blue. Please press the pairing button for 5 sec until it is blinking blue.



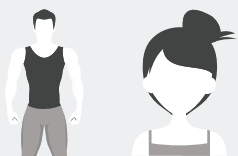
No Wifi



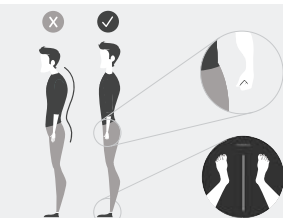
No Internet

If the Head LED ring is red, it means the device cannot connect to the Wifi. If the LED ring is Yellow, it means it is connected to the Wifi but does not have internet connectivity.

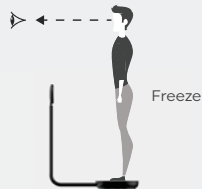
YOUR FIRST SCAN



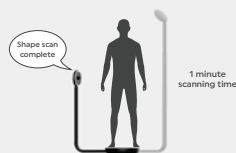
For best results, wear tight clothing or underwear. If you have long hair, make sure you tie your hair up in order to have your neck visible.



Step on ShapeScale and make a fist with both hands, stand upright and keep your feet separated in a wide stance. It will automatically start scanning.



Make sure do not move during the scan. It is best to focus on an imaginary point in front of you and not watch the product while it is rotating.



The scan will last 1 minute, and ShapeScale will inform you which part of your body is being scanned. The device will inform you when you scan step off.



The LED will indicate the progress of the scan upload which should take 5 min at 1 MB/s (300MB). Make sure you keep the device connected to the power until the scan has finished to upload.



Once uploaded, it will take ~5min to process your scan. You will get an app notification when the scan is ready. When the LED returns to rainbow you are ready to take another scan.

SAFETY & HANDLING

This is not a complete list of safety and handling precautions. Before using ShapeScale, review ShapeScale User Guide at support.shapescale.com/guide.



If the device LEDs blinking purple, please contact customer support at support.shapescale.com.

Be careful when folding or unfolding the arm, placing your hands close to the folding mechanism could result in injury.

The device should be kept away from children under 18 years old and pets.

Maximum weight is 440 lbs (200 kg).

Maximum recommended height is 6'6" or 2m.

The device is for indoor use only.

Operating temperature range is 50°F to 104°F (10°C to 40°C).

Storage temperature range is -22°F to 140°F (-30°C to +60°C).

Avoid using the device in a humid environment. Do not submerge the device or accessories in water.

Do not use a power supply other than the one provided, using a different power supply could result in damage or injury.

Do not try to repair or modify this equipment yourself. No service or repairs should be performed on the ShapeScale device other than the maintenance listed in the device's instructions for use.

Do not use accessories, detachable parts, or materials not described in the instructions for use. Use of parts and components other than those specified or provided by the manufacturer of this equipment could result in increased electromagnetic emissions or decreased electromagnetic immunity of this equipment and result in improper operation.

ShapeScale should only be used on firm ground, and not on top of any other objects or platforms such as furniture.

SAFETY & HANDLING

This is not a complete list of safety and handling precautions. Before using Shapescape, review ShapeScale User Guide at support.shapescape.com/guide.

	Maximum weight is 440 lbs (200 kg).	
	Maximum recommended height is 6'6" (2m).	
	The device is for indoor use only.	
	Operating temperature range is 50°F to 104°F (10°C to 40°C).	
If the Head light blinking red, please contact customer support at support.shapescape.com .	Storage temperature range is -22°F to 140°F (-30°C to +60°C).	
Be careful when folding or unfolding the arm, placing your hands close to the folding mechanism could result in injury.	Avoid using the device in a humid environment. Do not submerge the device or accessories in water.	Do not try to repair or modify this equipment yourself. No service or repairs should be performed on the ShapeScale other than the maintenance listed in the device's instructions for use.
The device should be kept away from children under 18 years old and pets.	Do not use a power supply other than the one provided, using a different power supply could result in damage or injury.	Do not use accessories, detachable parts, or materials not described in the instructions for use. Use of parts and components other than those specified or provided by the manufacturer of this equipment could result in increased electromagnetic emissions or decreased electromagnetic immunity of this equipment and result in improper operation.
		ShapeScale should only be used on firm ground, and not on top of any other objects or platforms such as furniture.

REGULATORY INFORMATION

Not a Medical device

ShapeScale is not a medical device, it is not intended to diagnose, treat, cure, or prevent a disease or health condition. It does not have FDA or medical CE approval.

Regulatory

Regulatory certification information is available on support.shapescape.com/compliance.

FCC and ISED Canada Compliance

This device complies with part 15 of the FCC Rules and ISED Canada licence-exempt RSS standards.

FCC Statement

This equipment has been tested and found to comply with the limits for a Class B digital device, pursuant to part 15 of FCC Rules. These limits are designed to provide reasonable protection against harmful interference in a residential installation. This equipment generates and can radiate radio frequency energy. If not installed and used in accordance with the instructions, it may cause harmful interference to radio communications. However, there is no guarantee that interference will not occur in a particular installation. Verification of harmful

interference by this equipment to radio or television reception can be determined by turning it off and then on. The user is encouraged to try to correct the interference by one or more of the following measures:

- Reorient or relocate the receiving antenna.
- Increase the separation between the equipment and receiver.
- Connect the equipment into an outlet on a different circuit to that of the receiver's outlet.
- Consult the dealer or an experienced radio/TV technician for help.

Any changes or modifications to this unit not expressly approved by the party responsible for compliance could void the user's authority to operate the equipment. The emissions are maintained within the band of operation under all conditions of normal operation.

FCC Radiation Exposure Statement

This equipment complies with FCC radiation exposure limits set forth for an controlled environment. This transmitter must not be co-located or operating in conjunction with any other antenna or transmitter. This equipment should be installed and operated with minimum distance 20cm between the radiator & your body.

ISED Statement

This device complies with Innovation, Science and Economic Development Canada license-exempt RSS standard (s). Operation is subject to the following two conditions: (1) this device may not cause interference, and (2) this device must accept any interference, including interference that may cause undesired operation of the device. Le présent appareil est conforme aux CNR d'Innovation, la science et le développement économique Canada licenciables aux ondes radio exemptes de licence. L'exploitation est autorisée aux deux conditions suivantes: (1) l'appareil ne doit pas produire de brouillage, et (2) l'utilisateur de l'appareil doit accepter tout brouillage radioélectrique subi, même si le brouillage est susceptible d'en compromettre le fonctionnement.

ISED Radiation Exposure Statement

This equipment complies with ISED RF radiation exposure limits set forth for an uncontrolled environment. This transmitter must not be co-located or operating in conjunction with any other antenna or transmitter. This equipment should be installed and operated

REGULATORY INFORMATION

with a minimum distance of 20cm between the radiator & your body.
Conforme aux limites d'exposition de rayonnement RF ISED établies pour un environnement non contrôlé. Cet émetteur ne doit pas être co-implanté ou fonctionner en conjonction avec toute autre antenne ou transmetteur. Cet équipement doit être installé et utilisé avec une distance minimale de 20cm entre le radiateur & votre corps.

Operation of 5150-5250MHz is restricted to indoor use only.
Le fonctionnement de 5150-5250 MHz est limité à une utilisation en intérieur uniquement.

EU / UK Compliance



Shape Labs Inc. hereby declares that this wireless device is in compliance with Directive 2014/53/EU. A copy of the declaration of conformity is available at support.shapescale.com/compliance.

Disposal and Recycling information



The symbol above means that according to local laws and regulations your product shall be disposed of separately from household waste. When this product reaches its end of life, take it to a collection point designated by local authorities.

Class 1 Laser information

This device is classified as a Class 1 Laser Product under the EN/IEC 60825-1, Edition 3 (2014) internationally. This product complies with FDA performance standards for laser products except for conformance with IEC 60825-1 Ed. 3 as described in Laser Notice No. 56, dated May 8, 2019. This device contains one or more lasers. Use other than described in the user guide, repair, or disassembly may cause damage, which could result in hazardous exposure to infrared emissions that are not visible.

CLASS 1 LASER PRODUCT

ShapeScale one-year limited warranty

Shape warrants the device and accessories against defects in materials and workmanship for one year from the date of original purchase. Shape does not warrant against normal wear and tear, nor damage caused by accident or abuse.