

Universal Ambient Light Installation Tutorial

1. Installation Precautions

1-1. Pay attention to the following during the installation process:

1-2. The dismantled trim panels and other components need to be placed so as not to scratch the dashboard or the interior of the car

1-3. The wire skin or other debris left by the wiring, please clean up in time and do not leave it in the car

1-4. The wiring part inside the vehicle must be well insulated and fixed to prevent short circuit from causing other faults

1-5. Avoid the line affecting the steering wheel shaft, accelerator, pedal and other active control components of the car

1-6. Check and count the corresponding product accessories before loading

1-7. The main control box directly takes the 12V power supply to test the LED strip and other lamp accessories

1-8. Switch whether the three basic colors of red, green and yellow are lack of color and breakpoint

1-9. After inspection, there is no problem before loading, and the light bar cannot be violently bent

1-10. The installation of the light bar is not tested, and the problem of the light bar in the installation is not guaranteed.

1-11. The light bar can be cut. If the color of the tail is inconsistent or the color of the whole strip is out of sync after cutting, you can continue to trim about 2 mm.

1-12. Be sure to install the wiring harness and control box when the vehicle is turned off, so as not to damage the machine or other accessories in the state of hot swapping

1-13. The installation position of lamps (contour light bar/handle/storage box/footwell lamp, etc.) should be installed according to the actual situation. The installation position of lamps in this document is only for reference

2. Product functional testing

2-1. Control: physical button control, applet control, APP control

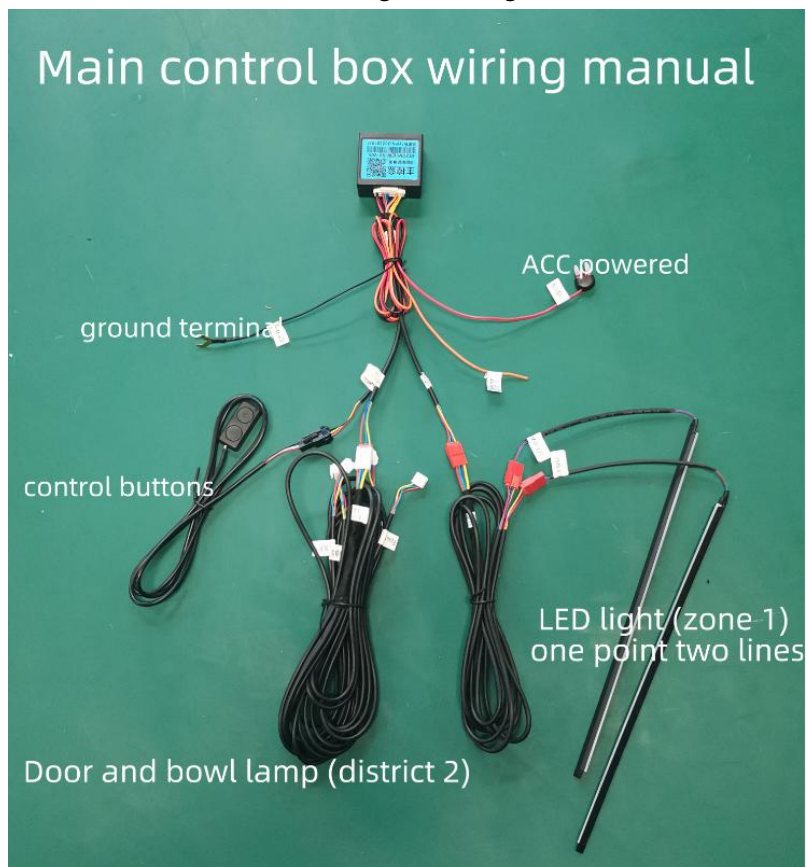
2-2. The main control box is connected to electricity: the power ground (GND) is connected to the ground wire or the ground wire; the power supply +12V is connected to the body ACC

2-3. Power connection of the auxiliary control box: the power ground (GND) is connected to the ground wire or the ground wire; the power supply +12V is connected to the body ACC or the normal power 12V

2-4. Count the accessories and install the main control box first

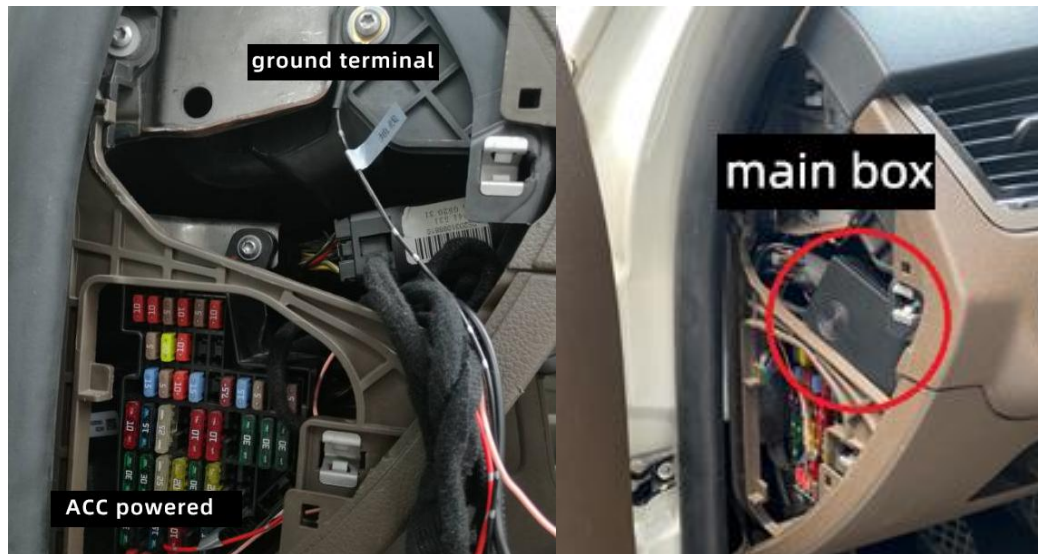


2-5. Main control controller wiring and wiring



3. Main control box installation

3-1. First find the car power fuse box, find the ACC12V fuse (ACC12V is the power supply that will become 0V after the car key is removed or the OFF gear), connect the power +12V of the main control box wiring harness here; connect the main control box wiring harness " Power ground (GND)" is connected to ground or ground wire; connect to the main control box and place it in a suitable place to fix it (note, do not place the main control box at the air outlet of the air conditioner, so as not to affect the music rhythm effect)

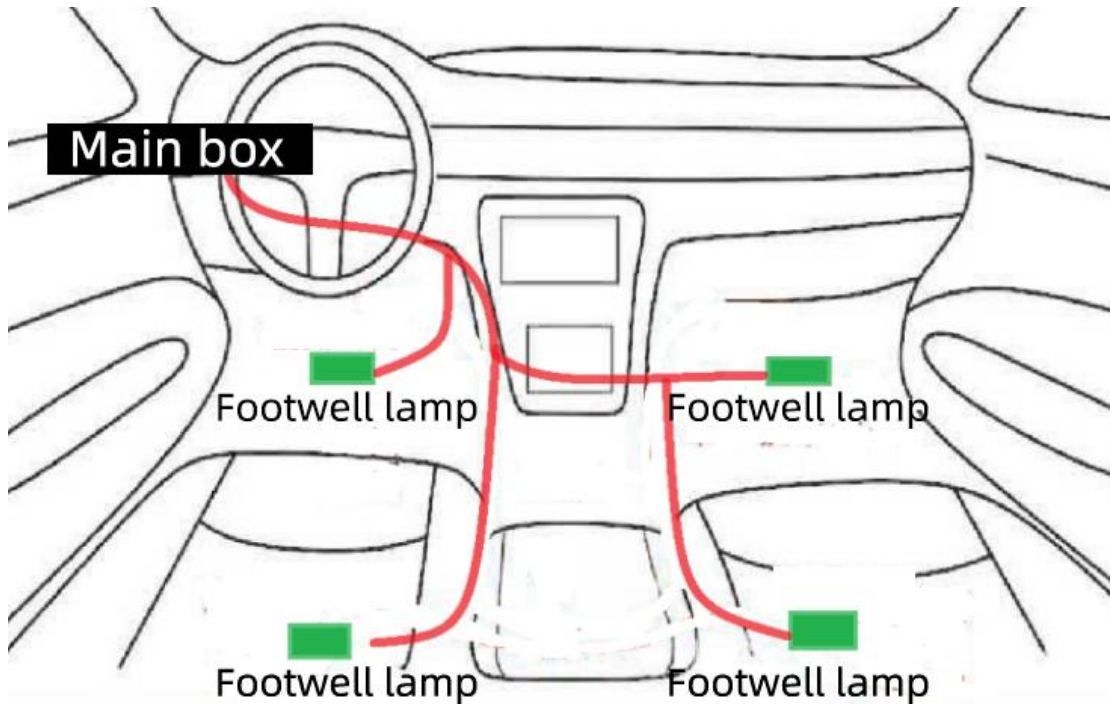


3-2. Installation of the central control outline light (connected to "Zone 1/Central control outline light"): First remove the relevant central control decorative strips with the rocker, for the wiring of the central control outline light, and install the light strip into the central control gap. If it is very tight, cut off the hot melt adhesive on the reverse side, then put it into the light bar, and fix it with screws. The installation position of each model is different, and the actual position shall prevail.





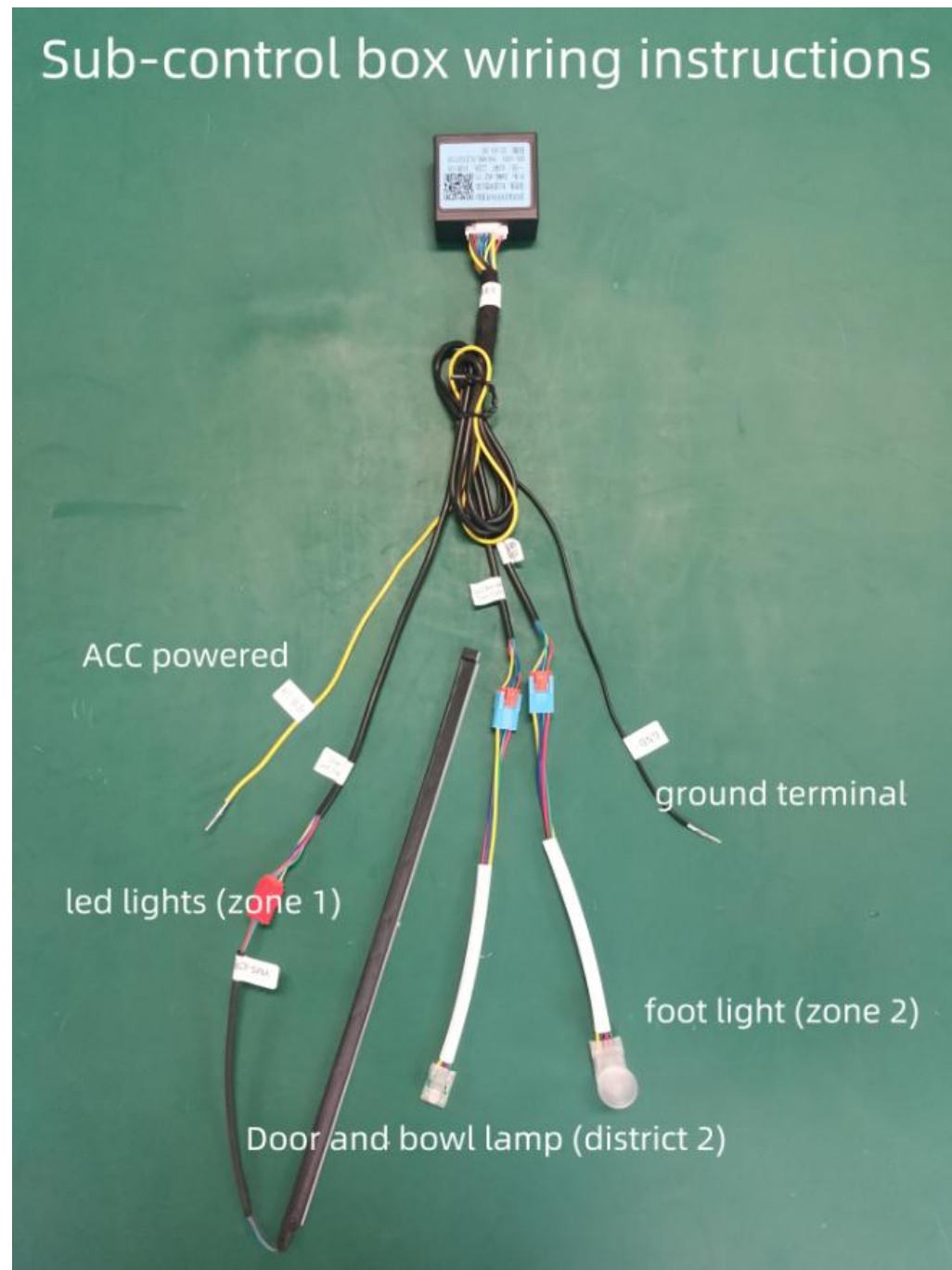
3-3. Footwell lamp installation (connected to "2 zone/footwell"): Footwell lamp wiring



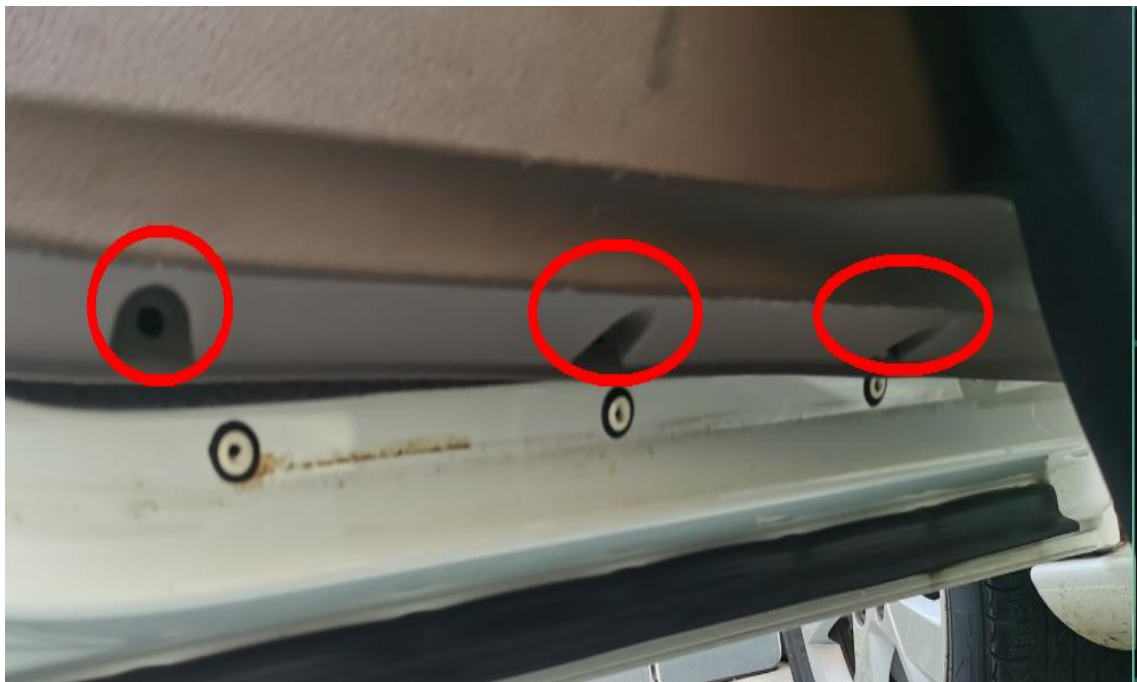
Move the wire to the four foot socket lights and fix them in place



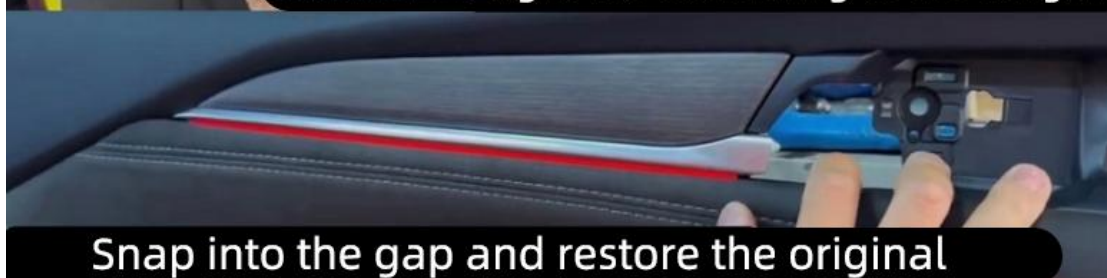
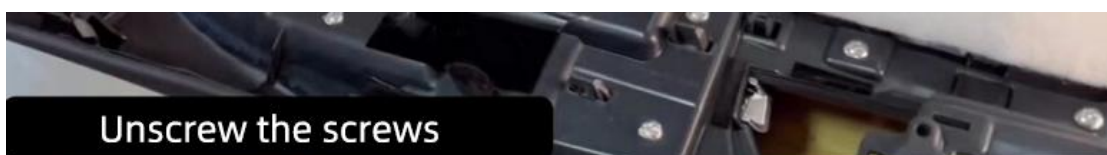
4. Sub-control box installation



4-1.Remove the door frame decorative strip and door lock screw, unplug the socket in the door frame, and take off the door frame



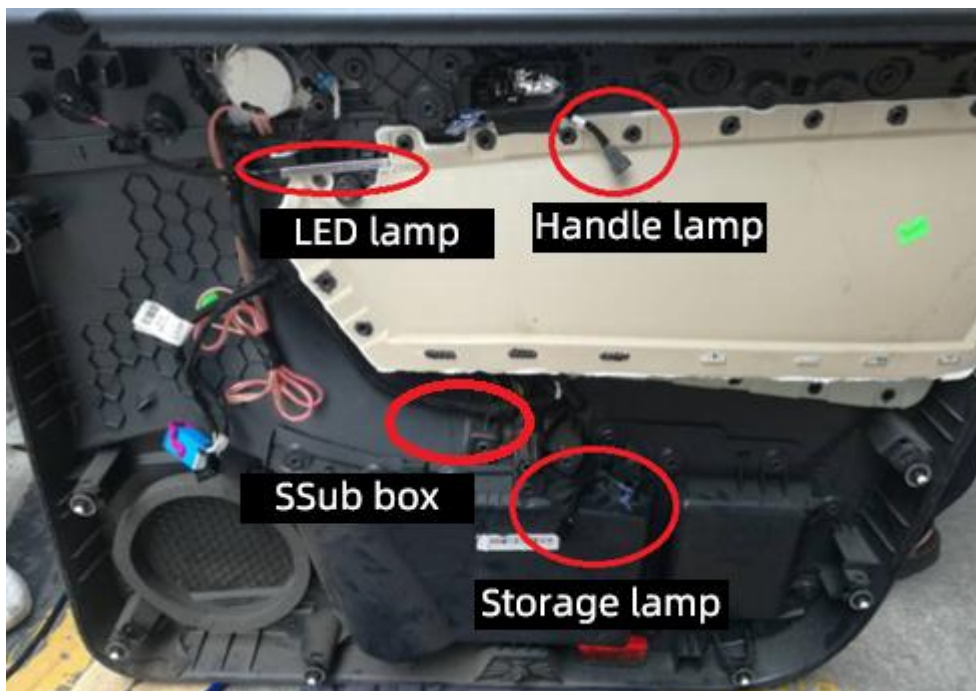
4-2.The outline light bar is pierced from the door frame and installed in the door gap. The construction is based on the door gap situation to avoid violent extrusion and explosion of the lamp beads.



The panel is of hot melt adhesive type

Cut off the hot melt adhesive cap

Upper screw fixation

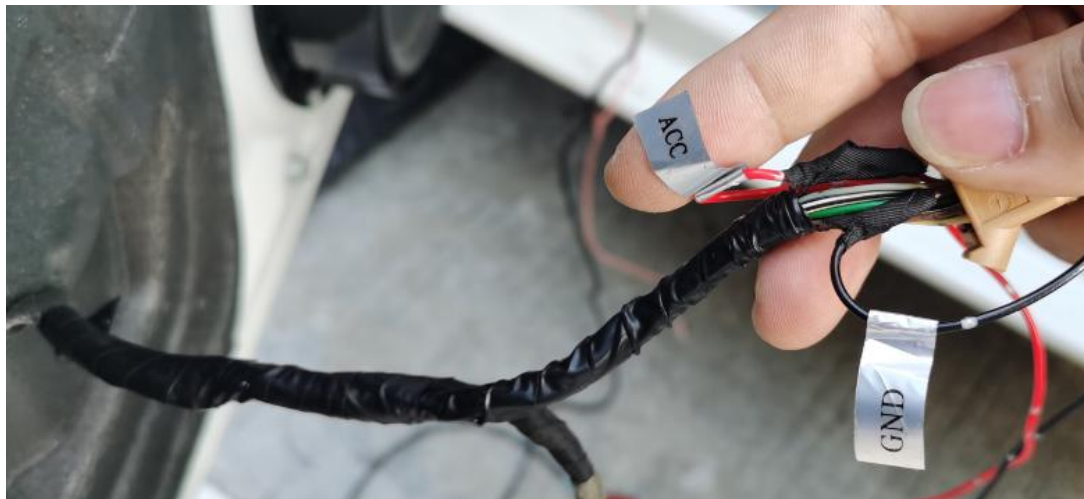


4-3.The handle light and the storage box light need to be installed by opening the hole. The opening position of the handle light is generally upward, and the position should be hidden to see the light and not see the light. The storage box can also be opened upward or side to back.



4-4. Find the normal power 12V (or ACC12V), and connect the power +12V of the wiring harness of the sub-control box here; find the ground wire, and connect the "power ground (GND)" of the wiring harness of the sub-control box here; after completing the wiring assembly , Do not rush to lock the door frame, you should first perform a basic power-on test (whether the control is normal, whether the color of the light bar is the same, whether the lights are synchronized)

Note: The four gates should be unified, that is, the four gates take "normal power 12V" or the four gates take "ACC12V"



5. Optional speaker installation

5-1. Find the position of the door panel horn and align it well (it is forbidden to stick the horn on the horn to avoid abnormal noise).

5-2. Find the position and fix it with hot melt glue



Common problems and solutions

Fault phenomenon	possible causes	Solution
Main box light is off	<ol style="list-style-type: none"> 1.The power supply line is not connected or wrongly connected (should be connected to 12V strong electricity) 2. If the ground wire is grounded, the grounding may be bad 3.The lamp head is not plugged in or the lamp is damaged 	<ol style="list-style-type: none"> 1. Check whether the power supply is strong 12V, and measure whether there is 12V (9~16V) between PIN1 (GND) and PIN2 (power) 2. Change grounding to wiring grounding <p>Plug in the lamp head connector and replace the lamp</p>
Sub box light is off	<ol style="list-style-type: none"> 1. The power supply line is not connected or wrongly connected (should be connected to 12V strong electricity) 2. If the ground wire is grounded, the grounding may be bad 3. The lamp head is not plugged in or the lamp is damaged <p>The secondary box is not paired (automatic pairing failed)</p>	<ol style="list-style-type: none"> 1. Check whether the power supply is strong 12V, and measure whether there is 12V (9~16V) between PIN1 (GND) and PIN2 (power) 2. Change grounding to wiring grounding 3. Plug in the lamp head connector and replace the lamp <p>Manually pair the ambient light again (see "Keys, Mini Programs Operation Instructions")</p>
When ACC is OFF, the door lights are turned off asynchronously	Inconsistent door connection	The four gates should be unified, that is, the four gates take "normal power 12V" or the four gates take "ACC12V"
Physical buttons cannot	The button connector is not plugged in	Plug in the button connector; check whether the button circuit

be controlled	properly; the line is disconnected	is off. For the specific use of the button, see "Button and Mini Program Operation Instructions"
Abnormal color and brightness of lamps	Wire harness gets stuck during installation resulting in short or open circuit; light bar/light head damaged	Check wiring; replace with new light bar/light head
The mini program/APP cannot find the ambient light (main box)	The applet/APP has been updated; the main box is damaged; the problem of new mobile phone adaptation	Delete the applet/APP and scan the code again to enter; replace the main box; contact the after-sales staff
In close proximity, when two or more vehicles are installed at the same time, the pairing affects each other	The main box mistakenly used the auxiliary box next to it as the auxiliary box of the car door	<p>Method 1: After the first car is paired and installed, do not turn off the ACC or keep the ambient light on, then pair the second car, and so on.</p> <p>Method 2: After the first car pairing and installation is completed, unplug the car battery electrode, and then pair the second car, and so on.</p> <p>Method 3: After the first vehicle is paired and installed, disconnect the power supply of the main/secondary box, and then pair the second vehicle, and so on.</p> <p>Method 4: Keep the distance between vehicles at least 40 meters before pairing</p>

FCC WARNING

This device complies with part 15 of the FCC Rules. Operation is subject to the following two conditions: (1) this device may not cause harmful interference, and (2) this device must accept any interference received, including interference that may cause undesired operation.

Any changes or modifications not expressly approved by the party responsible for compliance could void the user's authority to operate the equipment.

NOTE: This equipment has been tested and found to comply with the limits for a Class B digital device, pursuant to Part 15 of the FCC Rules. These limits are designed to provide reasonable protection against harmful interference in a residential installation. This equipment generates, uses and can radiate radio frequency energy and, if not installed and used in accordance with the instructions, may cause harmful interference to radio communications.

However, there is no guarantee that interference will not occur in a particular installation. If this equipment does cause harmful interference to radio or television reception, which can be determined by turning the equipment off and on, the user is encouraged to try to correct the interference by one or more of the following measures:

- Reorient or relocate the receiving antenna.
- Increase the separation between the equipment and receiver.
- Connect the equipment into an outlet on a circuit different from that to which the receiver is connected.
- Consult the dealer or an experienced radio/TV technician for help.

To maintain compliance with FCC's RF Exposure guidelines, This equipment should be installed and operated with minimum 20cm distance between the radiator and your body: Use only the supplied antenna.