

Table of contents

Chapter 1 : Product description	2
Chapter 2 : Installation procedure	4
Example of layout/installation	4
Wall mounting instructions.....	5
Key holder Assembly Instruction	11
Device information	12
Specifications	12
Maintenance operation	12
Precautions	12
Copyright.....	14

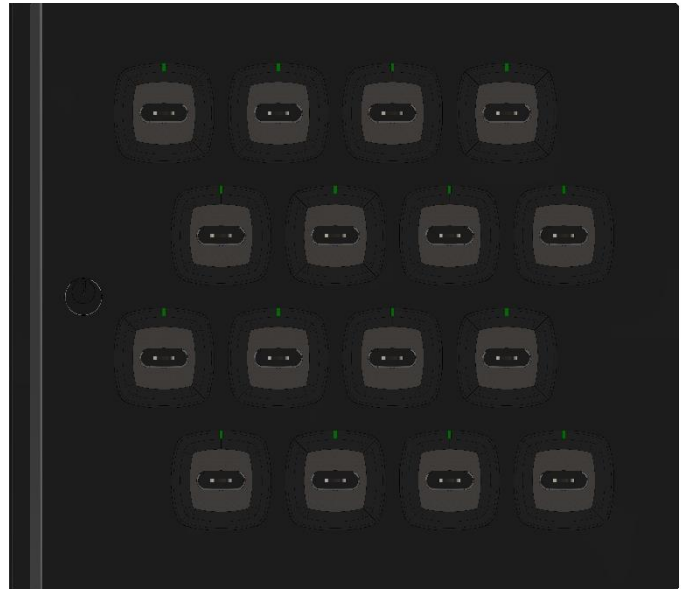
Chapter 1: Product description

A SmartKey Manager Skv2 is composed of the following elements:

Central Unit (UC)



Key panel (KP)



Badges



Key rings (with unique identification)



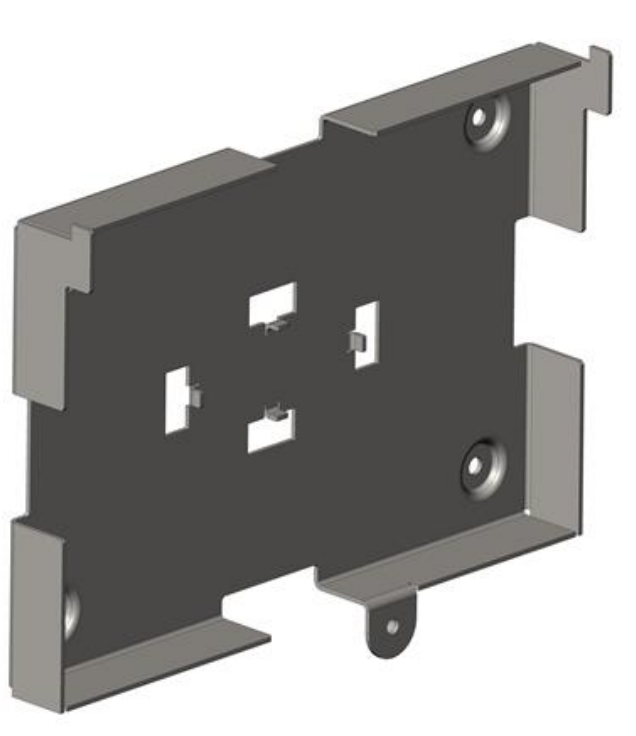
Mounting template trunking Central Unit/Panels 270mm:



Trunking Mounting Template Panels/Panels 334mm



Wall mounting bracket Central Unit and Key Panels:

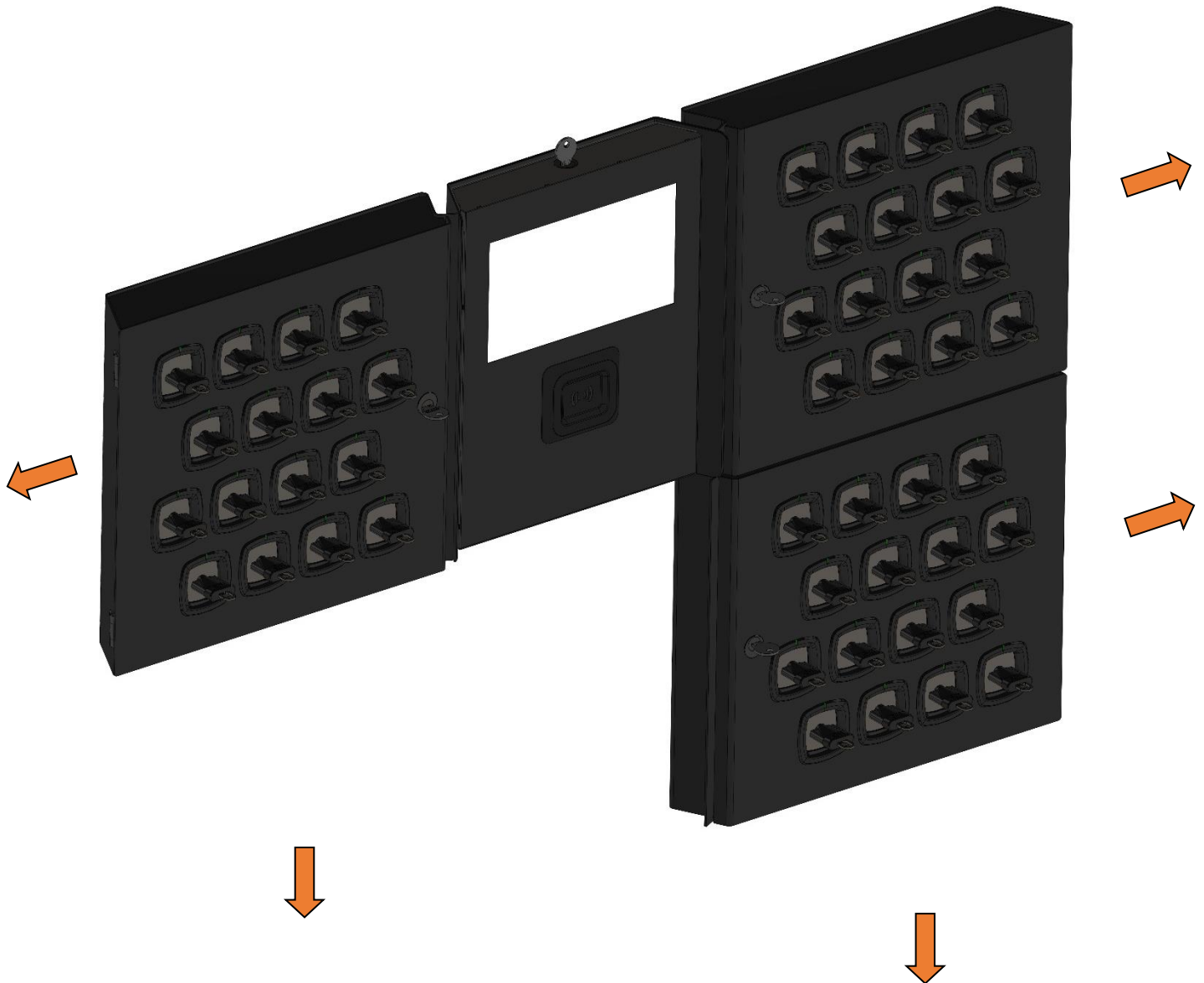


Chapter 2 : Installation procedure

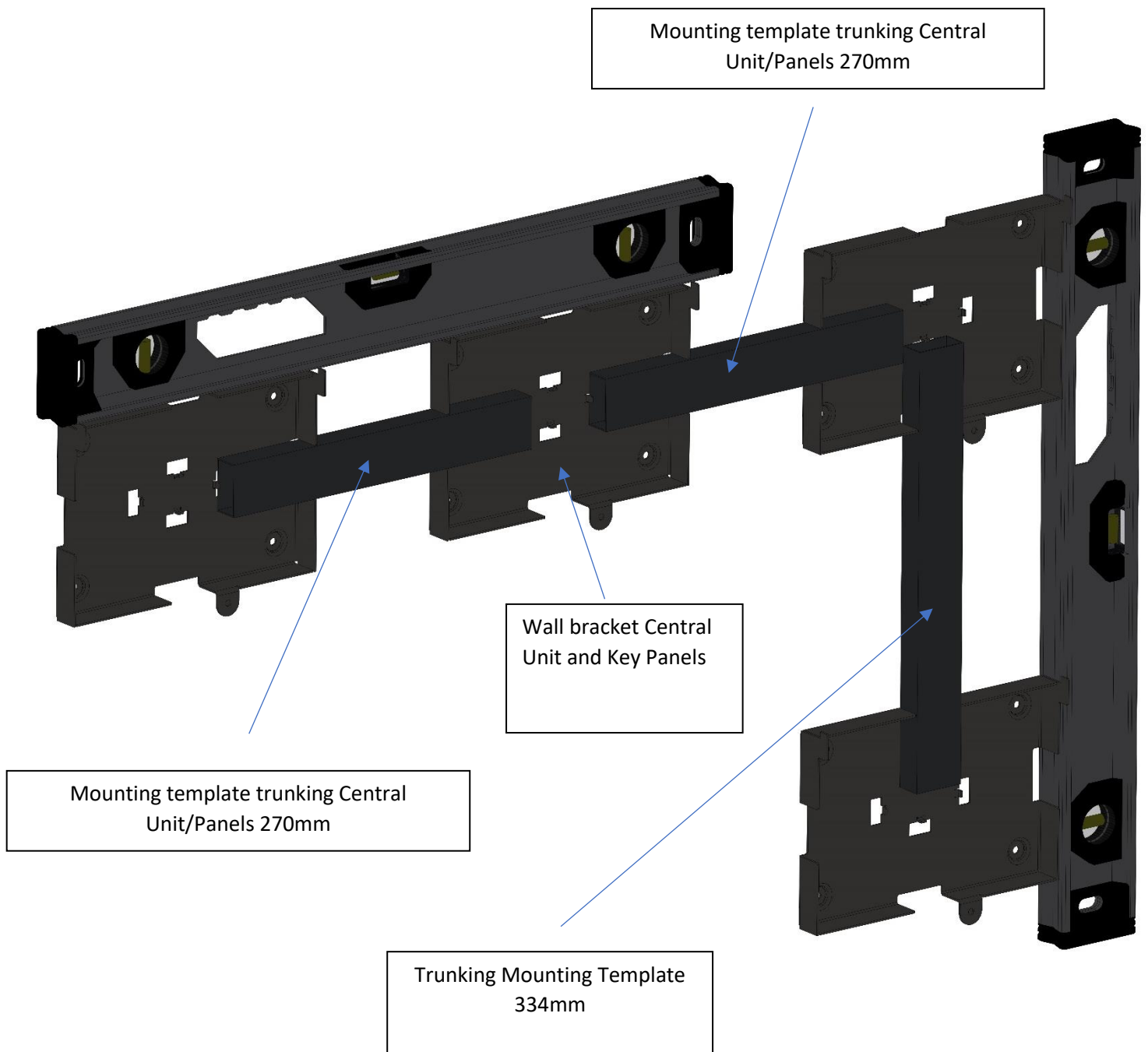
Example of layout/installation

Any configuration can be made with a Central Unit and Key Panels on the right and left or above and below.

Note: No panels can be installed below and above the Central Unit

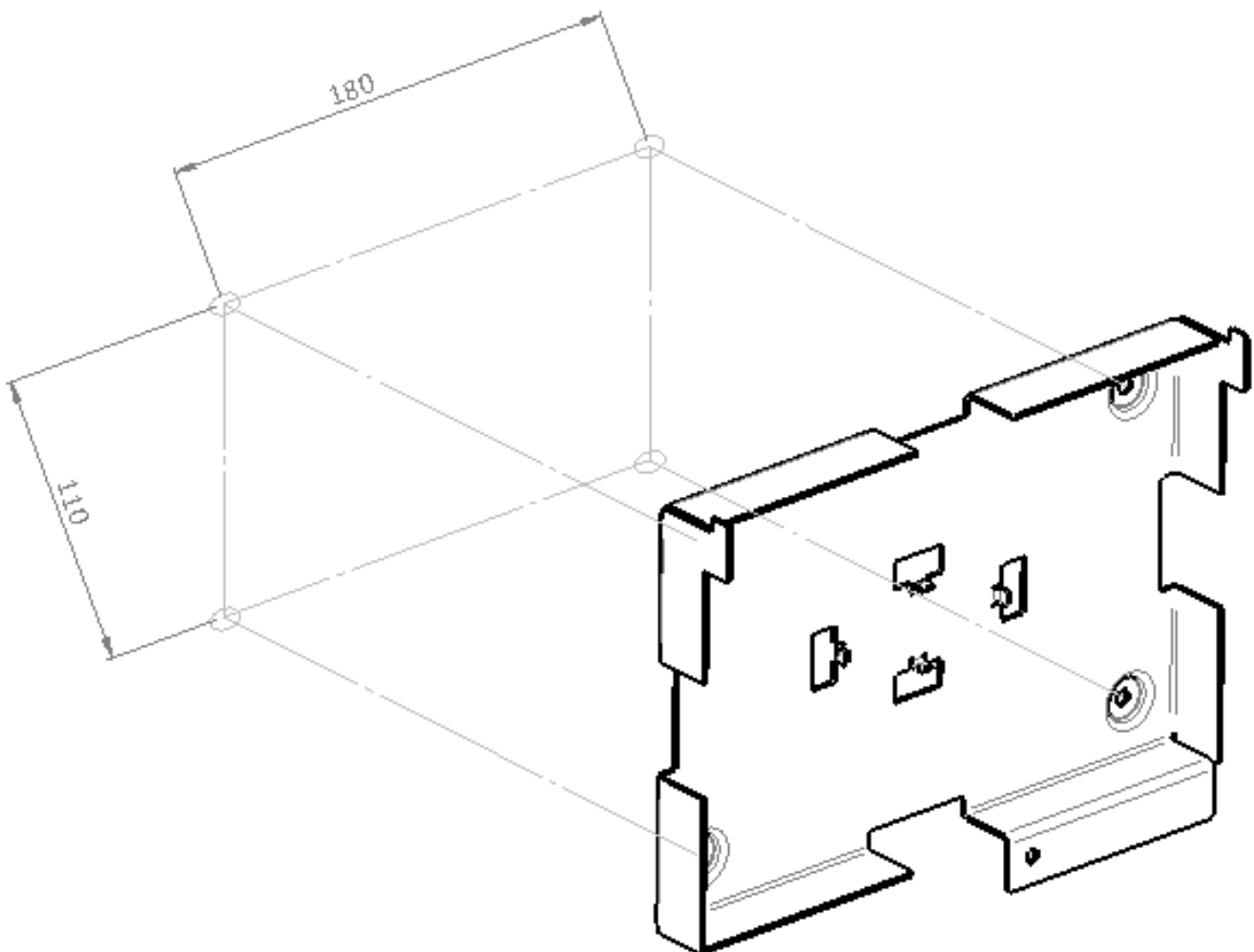


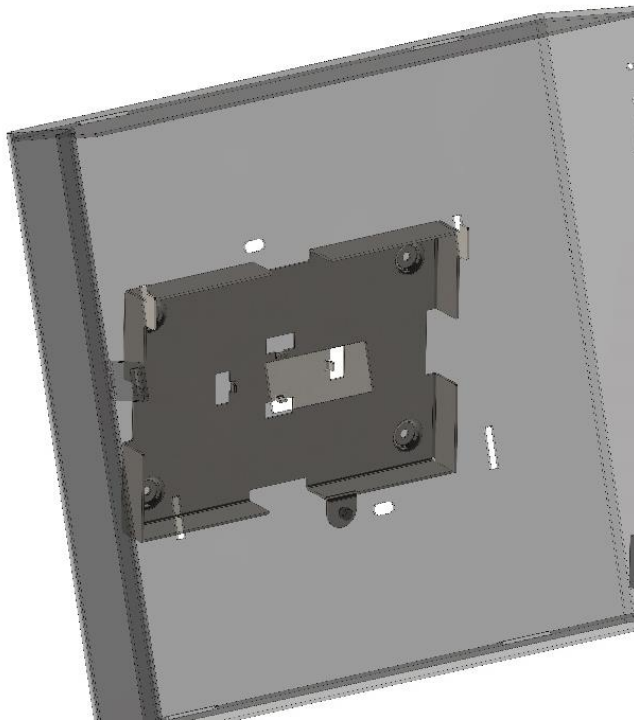
Wall mounting instructions



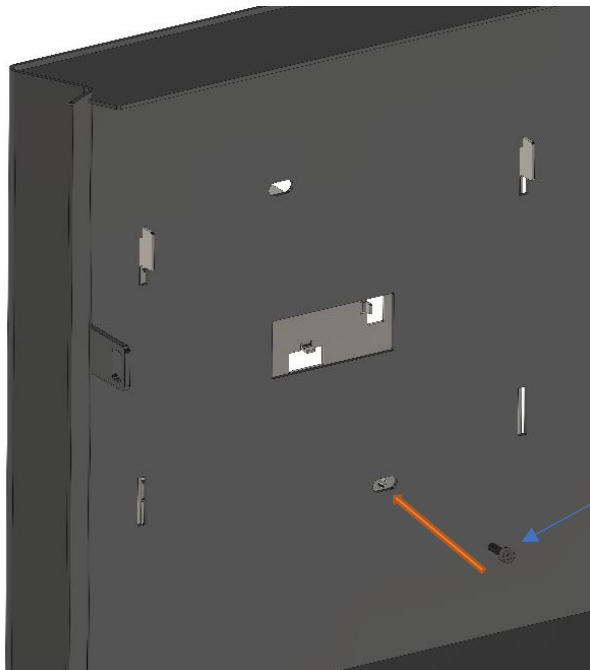
- Position the wall mounting bracket Central Unit and Key Panels

- Position a spirit level
- Point out the 4 holes of the bracket for drilling on the wall
- Drill 4 holes $\varnothing 8\text{mm}$, minimum depth 50 mm for the wall plugs with the 180mm x 110mm centers of the wall bracket
- (Use suitable plugs according to the type of wall)
- Fixing the support with 4 screws, diameter 5 x 50mm
- Use the appropriate trunking (Central Unit/Panels or Panels/Panels) to fix the other supports.
- (For information: the channel is used as a drilling template, but it must be kept on the assemblies because it is also used to pass the cables)





- Hook the key panels or the central unit (as shown in the picture)

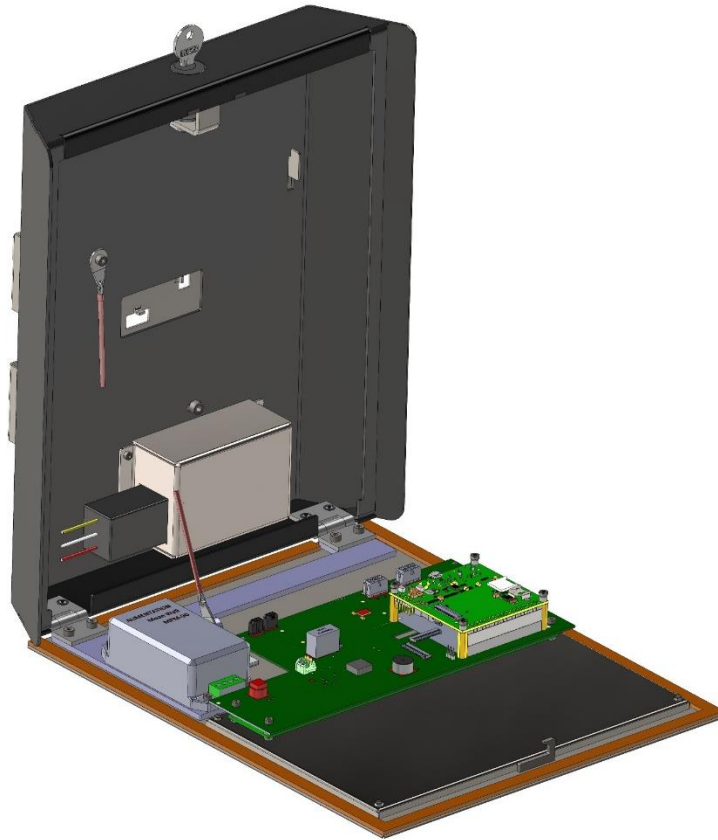


- Fixing the key panel to the mounting bracket with the CHC screw M5x10

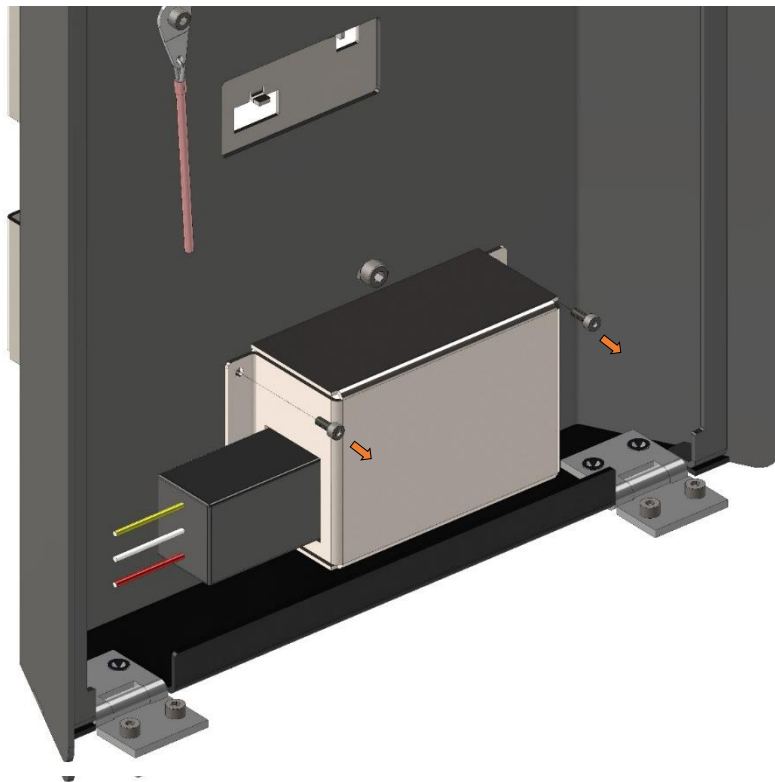
NOTE: This is the same principle for fixing the central unit.

Connection to the electrical network and Ethernet network

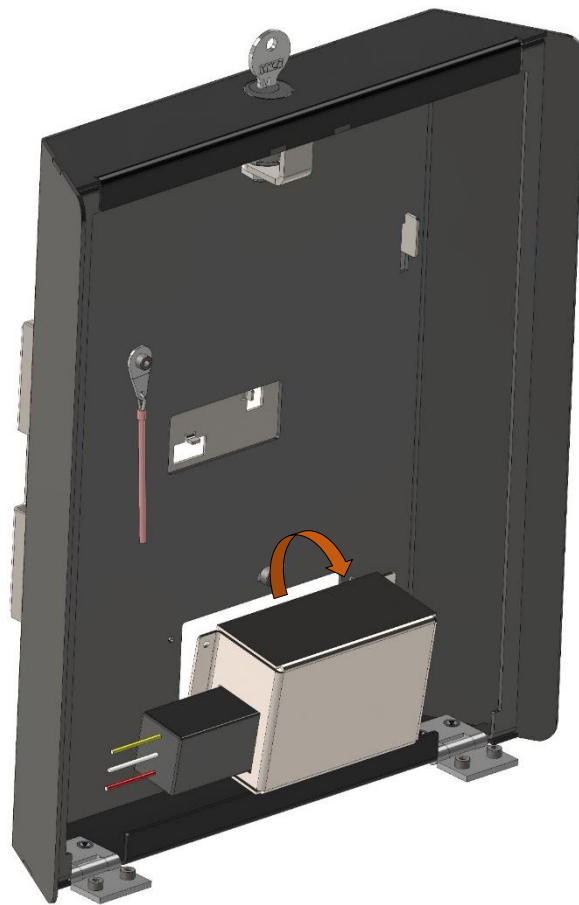
- Open the central unit by unlock the lock located at the top of the Central Unit



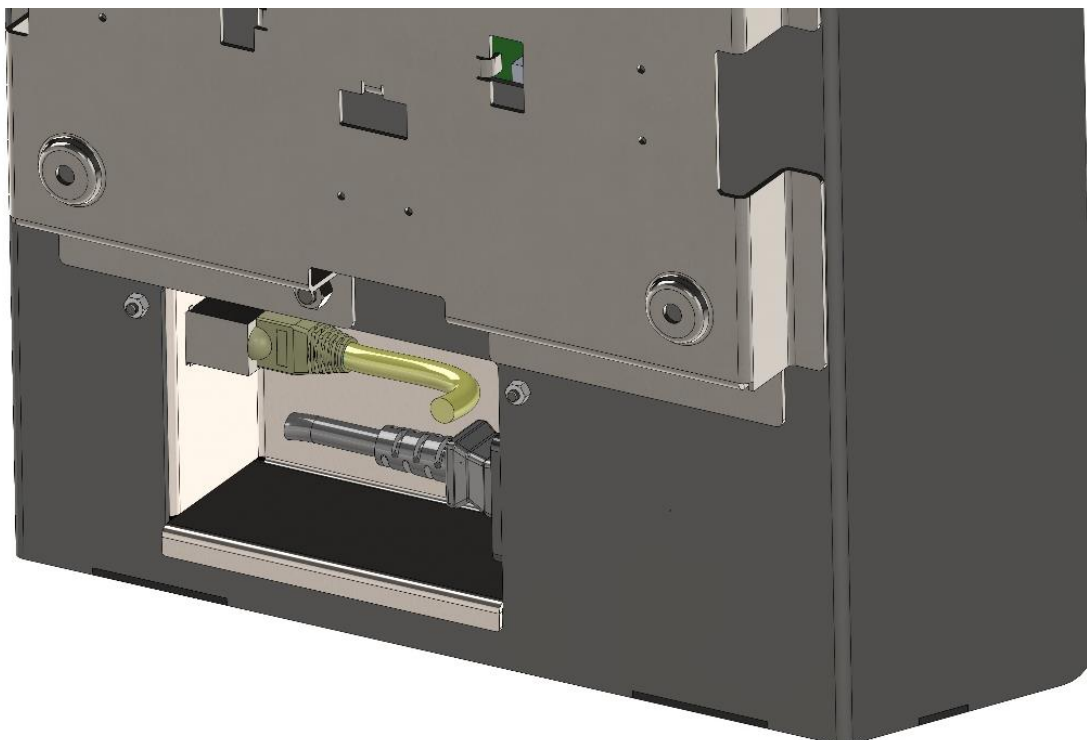
- Unscrew the 2 CHC M3x8 screws.



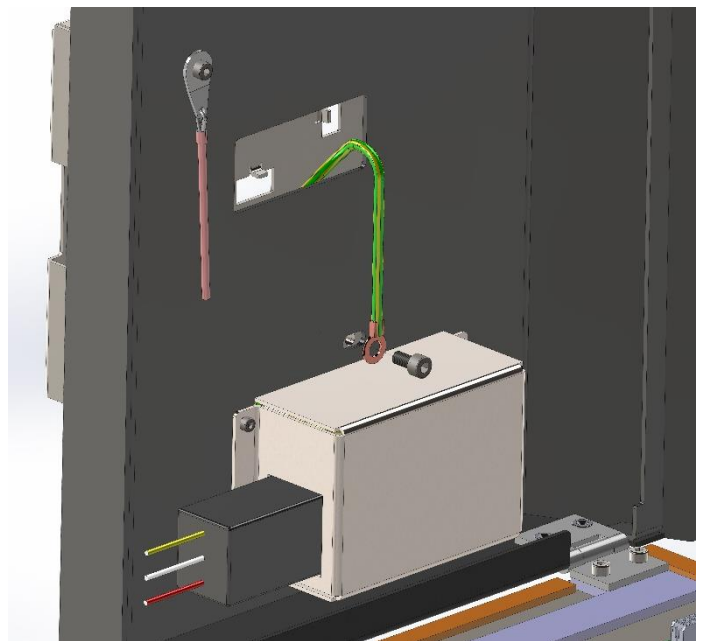
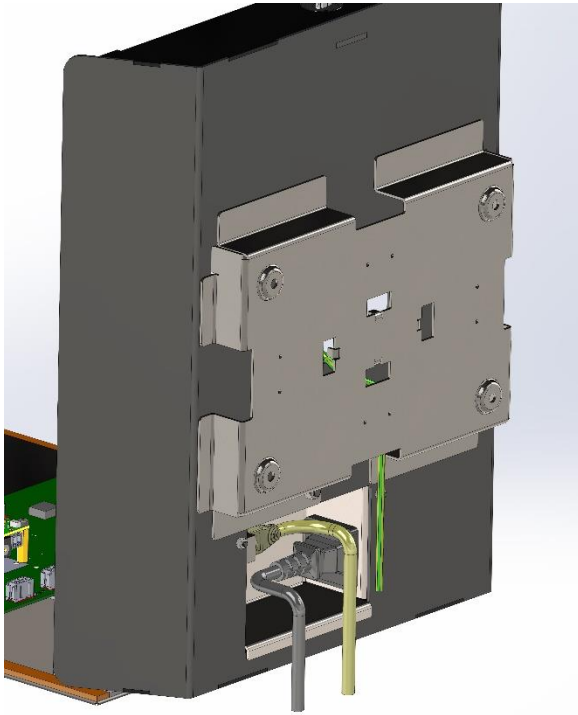
- Flip the box to access inside.



- Plug RJ45 cable (cat6 & S/FTP type) and power cable
- Put back the box and screw it with 2 CHC M3x8 screws



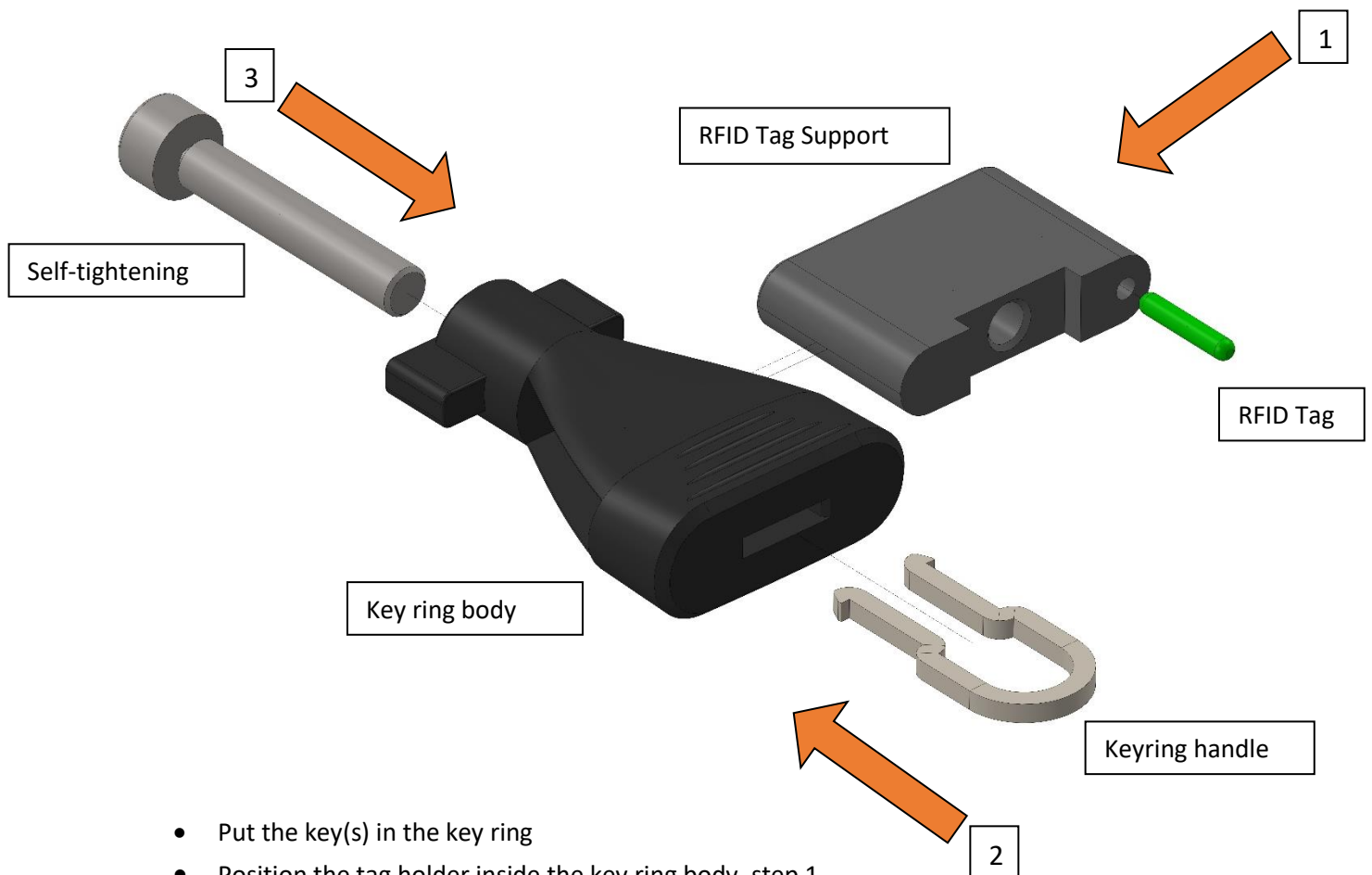
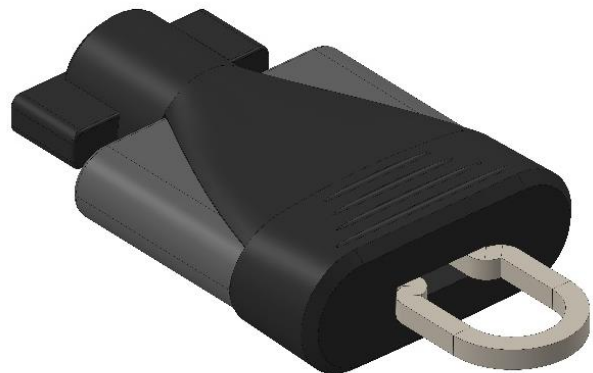
- Connect the earth to the chassis by sliding the crimped earth cable from the outside to the inside of the central unit through the wall bracket (as shown below).



Key holder Assembly Instruction

The RFID key ring consists of:

- 1 Key ring body
- 1 RFID tag holder
- A handle allowing to attach one or several elements such as keys or others
- A self-breaking screw allowing to make the shackle unremovable after installation
- 1 RFID tag



- Put the key(s) in the key ring
- Position the tag holder inside the key ring body, step 1
- Press firmly to place the shackle into the key ring body, step 2
- Tighten the self-tightening screw until the screw breaks, step 3

Device information

Specifications

	Central Unit	Key Panel
RFID Frequency	125kHz – 13.56MHz	125kHz
Protection Factor	IP40	IP40
Temperature	5 °C to +45 °C	5 °C to +45 °C
Storage Temperature (power off)	0 to 60°C	0 to 60°C
Dimensions (L x W x D)	315mm x 95mm x 360mm	403mm x 96mm x 360mm
Weight	5 kg	8.5 kg
Power supply	80-264V CA, 113-370V CC	12VCC Via Central Unit
Max Consumption	80,4W – 6,7A for the full system	
Cabinet material	Steel + Polyester paint	Steel + Polyester paint
Plastic part material	POLYLAC PA-707K/ lupital F20-03	POLYLAC PA-707K/ lupital F20-03
Ethernet Interface	100 Mbit	
Max consumption	80,4W – 6,7A for the full system	
Max no of key panel	8	
ethernet interface	10/100 Mbit with IEEE 1588	
Display Size	10.1 inches (16:9 Diagonal)	
Operating System	Embedded Linux	

Maintenance operation

1. Fuse replacement: Use Ø5x20mm - 2.5A Time Delay / 250VAC (certified to IEC 60127-6)
2. Replacement of a key entry, contact your dealer
3. Replacement of the touch screen, contact your dealer
4. Replacement of a key ring, contact your dealer

Precautions

Important safety instructions

1. Read these instructions carefully.
2. Keep these instructions.
3. Follow all warnings.
4. Follow all instructions.

Warning/Precautions

- Do not position the cabinet in a corridor leading to an emergency exit where it could impede evacuation.
- Electrical connections must be made by a professionally trained and authorized electrician.
- The earth wire of the system must be correctly and continuously connected to ground.
- Before powering up, the correct insulation of the cables, the earthing of the elements and the correct connection of the 220V cables to the power supply must be carried out.

- Install the Skv2 out of reach of children.
- The wall where the Smart Key Manager is installed must be able to support at least 5 kg per Central Unit and 10 kg per key panel.



This symbol means that the product should not be disposed of with household waste as it contains electronic components. You must dispose of your Smart Key Manager in accordance with applicable laws and regulations.



This symbol indicates the location of the terminal to be connected to the equipment earth. It is imperative that this terminal be connected to an earth ground continuously and by a qualified electrician.

Changes or modifications to this equipment not authorized by Serv Trayvou may void the electromagnetic compatibility (EMC) and terminate your authority to operate the product. This product has been tested for EMC compatibility under certain conditions, including the use of shielded cables to connect the various components of the system. It is important to use the shielded cables provided between the system components and an RJ45 cat6 S/FTP cable to reduce the likelihood of interference with other electronic devices.

FCC declaration

This equipment has been tested and found to comply with the limits for a Class B digital device, pursuant to part 15 of the FCC Rules. These limits are designed to provide reasonable protection against harmful interference in a residential installation. This equipment generates uses and can radiate radio frequency energy and, if not installed and used in accordance with the instructions, may cause harmful interference to radio communications. However, there is no guarantee that interference will not occur in a particular installation. If this equipment does cause harmful interference to radio or television reception, which can be determined by turning the equipment off and on, the user is encouraged to try to correct the interferences by one or more of the following measures:

- Reorient or relocate the receiving antenna.
- Increase the separation between the equipment and the receiver.
- Connect the equipment into an outlet on a circuit different from that to which the receiver is connected.
- Consult the dealer or an experienced radio/TV technician for help.

This portable equipment with it's antenna complies with FCC's radiation exposure limits set forth for an uncontrolled environment. To maintain compliance, follow the instructions below:

1. *This transmitter must not be co-located or operating in conjunction with any other antenna or transmitter.*
2. *Avoid direct contact to the antenna, or keep contact to a minimum while using this equipment.*

ISED declaration

This device complies with Industry Canada's licence-exempt RSSs. Operation is subject to the following two conditions:

1. This device may not cause interference, and
2. This device must accept any interference, including interference that may cause undesired operation of the device.

This portable equipment with its antenna complies with RSS102's radiation exposure limits set forth for an uncontrolled environment. To maintain compliance, follow the instructions below :

1. This transmitter must not be co-located or operating in conjunction with any other antenna or transmitter.
2. Avoid direct contact to the antenna, or keep contact to a minimum while using this equipment.

Copyright

The guide and mentioned programs are protected by copyright law (all rights reserved). It is forbidden to copy the guide by any means whatsoever, to distribute copies of free software from third parties without agreement of the company Serv Trayvou.

In case of non-compliance, Serv Trayvou reserve the right to take legal action.

The Company "SERV TRAYVOU INTERVERROUILLAGE" is not responsible for any changes or modifications not expressly approved by the party responsible for compliance. Such modifications could void the user's authority to operate the equipment.