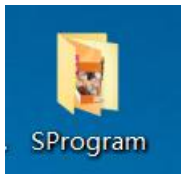
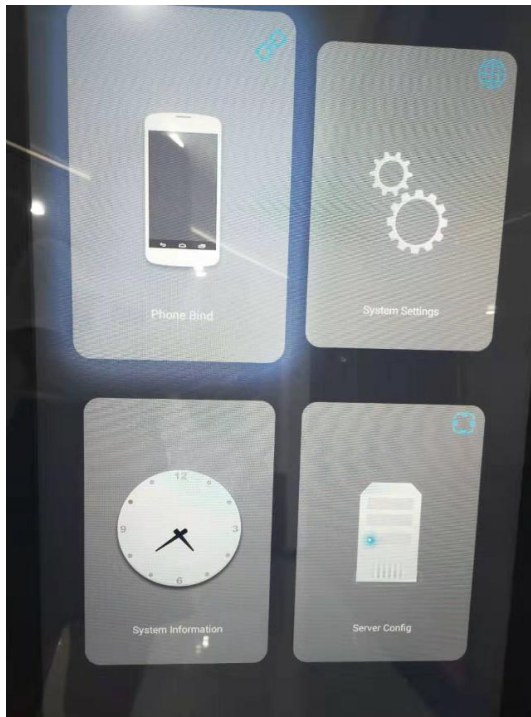

Manual for Single Publishing

1. Use an empty USB , or SD card , create a new file , name it “SProgram”;
2. Put the pictures and videos in the file “SProgram” (Single picture size less than 3M , single video size less than 300M).



3. Turn on the signage, it will show the below page :

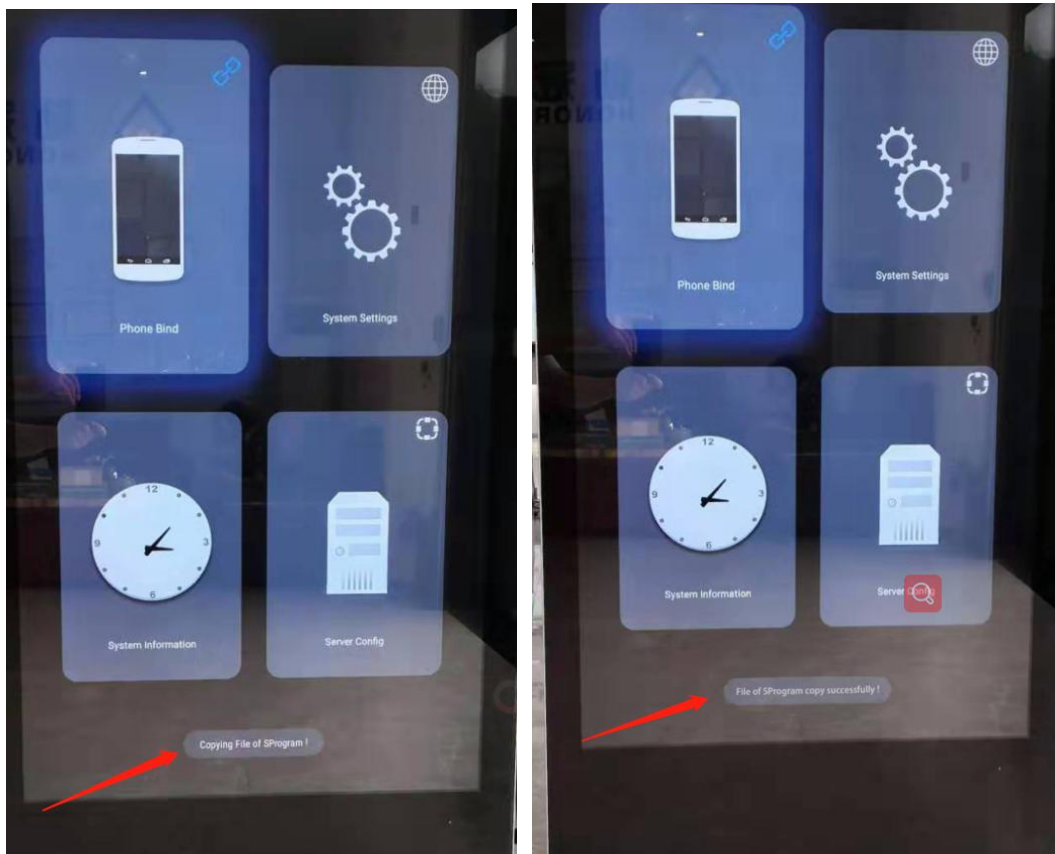


4. Connect the USB or SD card to the signage USB port .

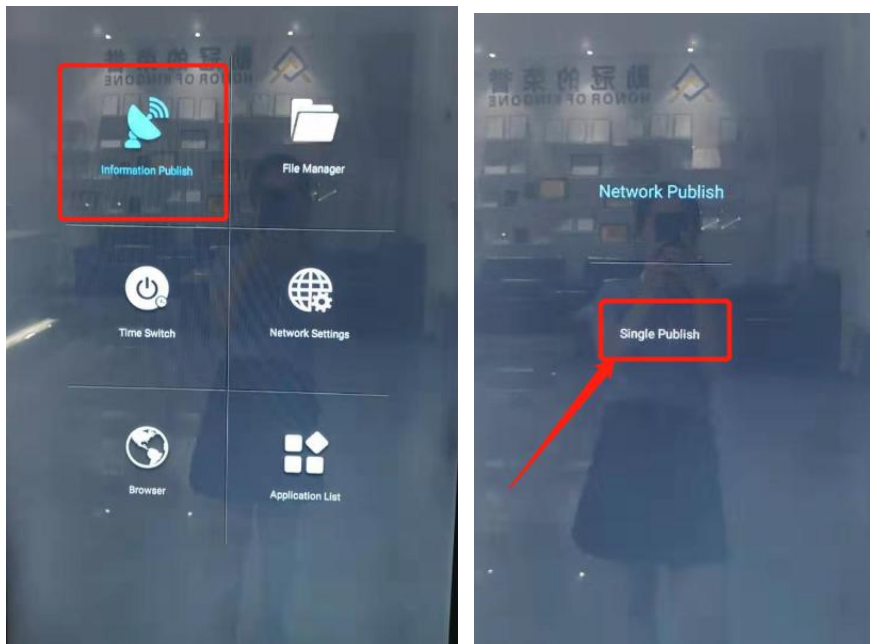
It will show “Copying File of SProgram! ”.

When the copy finished , it will show “File of SProgram copy successfully!” .

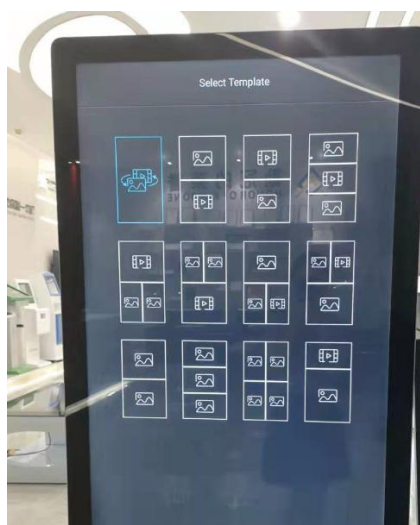
Then you can remove the USB , the files has been copied into the signage successfully.



5. Back to the home page , choose “Information Publish”,
Choose “Single Publish”.



6. Then you will see below different playing template : it
can play 1 picture, or 1 video, or picture and video playing on
the same screen , choose the playing template you need,
signage will display the pictures and videos in the SProgram
automatically.



FCC Statement

This equipment has been tested and found to comply with the limits for a Class B digital device, pursuant to part 15 of the FCC Rules. These limits are designed to provide reasonable protection against harmful interference in a residential installation. This equipment generates, uses and can radiate radio frequency energy and, if not installed and used in accordance with the instructions, may cause harmful interference to radio communications. However, there is no guarantee that interference will not occur in a particular installation. If this equipment does cause harmful interference to radio or

television reception, which can be determined by turning the equipment off and on, the user is encouraged to try to correct the interference by one or more of the following measures:

- Reorient or relocate the receiving antenna.**
- Increase the separation between the equipment and receiver.**
- Connect the equipment into an outlet on a circuit different from that to which the receiver is connected.**
- Consult the dealer or an experienced radio/ TV technician for help.**

This device complies with part 15 of the FCC Rules. Operation is subject to the following two conditions: (1) This device may not cause harmful interference, and (2) this device must accept any interference received, including interference that may cause undesired operation.

Caution

Any changes or modifications not expressly approved by the party responsible for compliance could void the user's authority to operate the equipment.

FCC Radiation Exposure Statement

This equipment must be installed and operated in accordance with provided instructions and the antenna(s) used for this transmitter must be installed to provide a separation distance of at least 20 cm from all persons and must not be co-located or operating in conjunction with any other antenna or transmitter. End-users and installers must be provide with antenna installation instructions and transmitter operating conditions for satisfying RF exposure