



**SELFIE
STICK**
WATER PROOF

1 Product appearance



1	Bracket fixing screw	2	Screw
3	Bluetooth camera controller	4	Antiskid texture
5	Hand detent	6	Lanyard hole

- Maximum diving depth with this case is 15 meters.
- Keep the "BT Shutter" APP is opening before diving

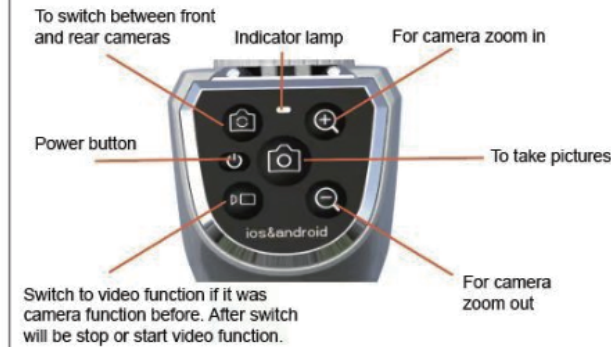
2 Attention

Please read the below instructions carefully before using this case.

Operation and maintenance

- Strictly follow the installation & disassembly instructions every time when using.
- The phone should be connected with bluetooth controller before diving. And ensure that the phone is in the long-bright state of taking pictures
- Make sure the case is well-locked and the sealing joint gap is averagely lined up before diving.
- Stop using this case if the sealing ring is damaged or deformed.
- Maximum diving depth is 15meters,over 15 meters is not guaranteed.
- Test the camera shutter button after every-time installation,make sure it is able to rebound after pressing.
- If the camera window is fogged up,keep the desiccant inside the case at least for 10 minutes before putting the case into the water.
- After every-time using,immerse the completely locked case in fresh water for 20 minutes,then wipe the case with soft fibre cloth and keep in a dry place.
- Do not expose the case under the high temperature environment or beside heating equipments,e.g.hot sunshine,oven,or water heater.
- Conduct waterproof test before diving.
- Do not use the case in sulfur-bearing hot spring.
- Do not take the case apart or outfit,privately,otherwise the waterproof function may be descended.
- it is not suggested you rent or lend this case to others in case of any disputes.

Bluetooth controller(Shell box-BT) operating instructions



- Long press for 3 seconds, release after the indicator light flashes, the controller is turned on. And the controller will automatically search for the last linked device, if the last device can not be searched, (Shell box-BT) will automatically enters the searchable state.
- Long press for 6 seconds, release after the indicator light flashes,the controller is turned on. And the Bluetooth controller enters the searched state.

When the bluetooth disconnect and how to reconnect.

- When the phone is actively disconnected, the phone needs to actively search for the Bluetooth controller, and click to link again.
- The Bluetooth controller is actively disconnected, and the Bluetooth controller needs to be restarted (Long press the power button for 3 seconds, the indicator light will light on and release the button), the Bluetooth controller (Shell box-BT) will automatically connect to the last linked mobile phone.
- Replace the device to connection: In the off state (Long press the power button for 6 seconds, the indicator light flashes and release). Use the phone to find the Bluetooth controller (Shell box-BT) to connect.

WARNING:

This device complies with part 15 of the FCC Rules. Operation is subject to the following two conditions: (1) this device may not cause harmful interference, and (2) this device must accept any interference received, including interference that may cause undesired operation. Any changes or modifications not expressly approved by the party responsible for compliance could void the user's authority to operate the equipment.

NOTE: This equipment has been tested and found to comply with the limits for a Class B digital device, pursuant to Part 15 of the FCC Rules. These limits are designed to provide reasonable protection against harmful interference in a residential installation. This equipment generates, uses and can radiate radio frequency energy and, if not installed and used in accordance with the instructions, may cause harmful interference to radio communications. However, there is no guarantee that interference will not occur in a particular installation. If this equipment does cause harmful interference to radio or television reception, which can be determined by turning the equipment off and on, the user is encouraged to try to correct the interference by one or more of the following measures:

- Reorient or relocate the receiving antenna.
 - Increase the separation between the equipment and receiver.
 - Connect the equipment into an outlet on a circuit different from that to which the receiver is connected.
 - Consult the dealer or an experienced radio/TV technician for help.
- The device has been evaluated to meet general RF exposure requirement. The device can be used in portable exposure condition without restriction