

INTERTEC Co.,Ltd.

Date: March 10, 2023

Office of Engineering Technology
Federal Communications Commission
7435 Oakland Mills Road
Columbia, MD 21046

RE: New Family Listing Declaration

Please review the attached exhibits supporting our request for applying New Family Listing to the FCC ID: **2A9WE-ITBKLN04-R01** for Company Name: INTERTEC Co.,Ltd. Product Description: ELECTRIC BIDET SEATS

Base model: KL600

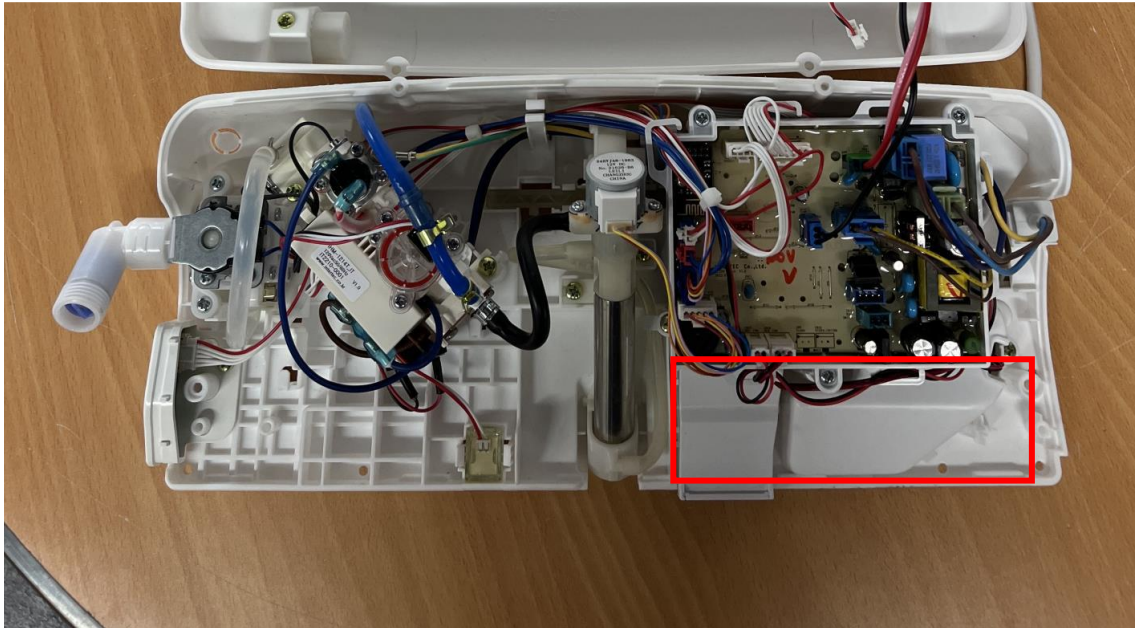
Additional model(s): KL600A, KL600B, KL600C, KL600D, KL600E, KL601, ITB600

The only difference between the base model KL600 and the additional model(s) KL600A, KL600B, KL600C, KL600D, KL600E, KL601, ITB600 is as follows:

Model Name	Differences
KL600	Basic Model
KL600A	This model is derived for Marketing purpose, It is identical to the basic model.
KL600B	
KL600C	
KL600D	
KL600E	
ITB600	
KL601	This model is identical to basic model except for removal of deodorization function.

* Details of difference between basic model and KL601:

In the KL601, the deodorization Part (Fan, Filter and Cover) are removed compared to basic model. Deodorization part is as the red box in the below photo.



Should you have any questions, please contact us.

Sincerely,

Name: KIM JI HYUN

Title: PRESIDENT

Ji Hyun Kim