



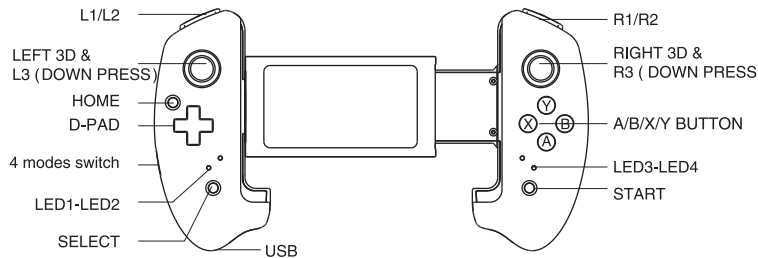
## Red Bat Wireless Game Controller User Manual (PG-9083S)

### Application Instruction:

1. Direct play without any platform or complicated activation to connect.
2. Support Android / iOS / smart TV, N-S, P4 with wireless connection, Win 7/8/10 PC, N-S with wired connection.
3. With extending holder, super telescopic, adjustable. Maximum extending size up to 280 MM.
4. The structure accords with ergonomics and feels comfortable.
5. Support some cloud gaming platforms.

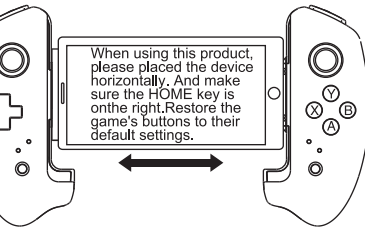
- \* Due to the mobile phone system problems, individual mobile phones may not support this device (e.g. the mobile phones of the Media Tek platform can not support it).
- \* Due to the official game platform software upgrade or source code changes and other not resist factors caused of some games can not be played or connected with our gamepad. Our company has no responsibility, we reserves the right of final interpretation for this.

### Instruction for key function:



### Electrical parameters:

- 1.Product Size: L215.5\*W127.9\*H54.5 mm
- 2.Product Weight: 232±5g
- 3.Working voltage: DC 3.7V
- 4.Working current: <15mA
- 5.Static current: < 15uA
- 6.Continuous gameplay time: >15H
- 7.Input voltage/current: DC 5V/ 500 mA
- 8.Charging Time: about 3 hours
- 9.BT 5.0 transmission distance: ≤8M
- 10.Battery capacity: 400mAh
- 11.Standby time: up to 30days once fully charged

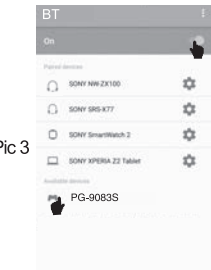
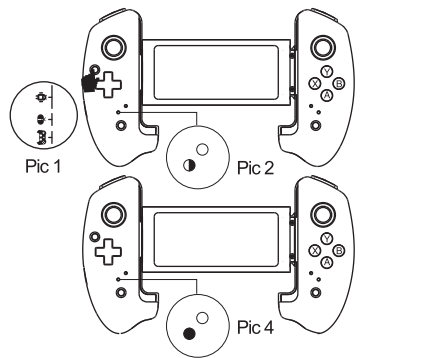


### Product Application:

#### Direct Play Mode (Android V3) :

Set the mode switch to the " " (First or second) position;

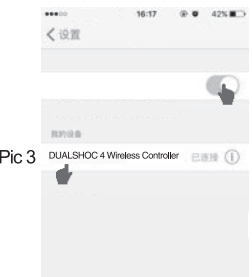
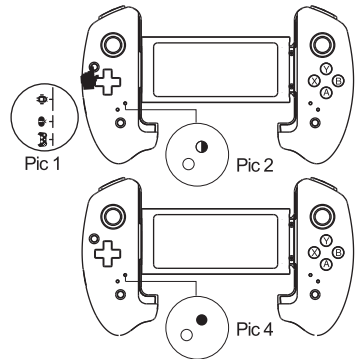
Press and hold the " HOME " button for 3 seconds to turn on the gamepad. At this time, the LED1 indicator flashes quickly, then search "PG—9083S" on mobile BT and pair it, LED1 indicator will be always on after connected successfully. If you connected before, press the HOME button directly, LED1 indicator will flash slowly, automatically reconnect.



#### Direct Play Mode ( IOS MFI ) :

Set the mode switch to the " " position;

Press and hold the " B + HOME " button for 3 seconds to turn on the gamepad. At this time, the LED2 indicator flashes quickly, then search "DUALSHOC 4 Wireless Controller" on mobile BT and pair it, LED2 indicator will be always on after connected successfully. If you connected before, press the HOME button directly, LED2 indicator will flash slowly, automatically reconnect.



### Mapping game buttons for direct play mode Android :

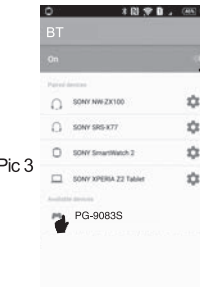
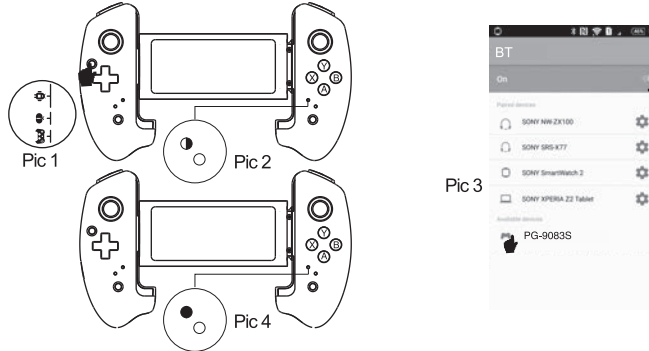
Check the default operation instructions at [www.ipega.hk](http://www.ipega.hk). If you need to reset the game buttons, please download and install " ShootingPlus V3 " APP from APP Store/ Google Play Store, remap the game buttons in the APP and adjust the button position.



### Android Standard Mode:

Set the mode switch to the " " position;

Press and hold the " HOME " button for 3 seconds to turn on the gamepad. At this time, the LED3 indicator flashes quickly, then search "PG—9083S" on mobile BT and pair it, LED3 indicator will be always on after connected successfully. If you connected before, press the HOME button directly, LED3 indicator will flash slowly, automatically reconnect.



### P4 Mode

Turn on the P4 console and plug-in USB data cable to the console and controller then press "HOME". Once connected, the LED 2 will always on. Then unplug the USB data cable, now the controller is able to reconnect. If the controller enter to another mode, please redo the above step for the P4 mode connection.

### N-S Mode

During the off mode of the controller, press "R2" + "Home" to enter N-S mode. While paring, the LED 2 and 3 will flash quickly. Once connected, the controller will automatically select the LED indicator. If the controller enter to another mode, please redo the above step for the N-S mode connection.

### Wired mode:

During the off-mode and plug-in to the console, the controller will automatically identify the console (PC / N-S).

1. Plug-in to PC, the controller set-up as X-input 360 mode (#1 indicator light up), press "Home" for 3s will change to D-input P3 mode (#2 indicator light up).
2. Plug-in to N-S dock, the controller will identify the order automatically.
3. Once connected successfully, the user can start the game by using the controller.

### Operation Instructions:

BT Connection instruction (press and hold on 3's)	Android BT Mode		IOS BT Mode
	Direct Play Mode (Android V3)	Android General model	IOS MFI
Indicators	LED 1	LED 3	LED 2
Remark	Gamepad operation and Touch screen operation are not supported at the same time		

BT Connection instruction (press and hold on 3's)	P4 Wireless mode	N-S mode
	P4 Wireless mode	N-S wireless mode
Indicators	Plug in the USB data cable and press HOME	R2 + HOME
Remark	Redo the step while you pair with others mode	

BT Connection instruction	Wired mode(connecting by USB data cable )	
	N-S	PC Wired mode
Indicators	connect the gamepad to the P3 console'sport via the USB cable.	
Remark	Automatically allocated by console LED lights always on	PC P3 Mode: LED2 PC 360 Mode: LED1 Press and hold HOME at the same time,P3 and 360 modes can switch freely

### Reminder

1. While charging the controller to connect the console, the controller cannot switch the mode.
2. While turn on the controller in wireless mode and plug-in the USB, it automatically turn to wired mode.
3. To optimize the joystick movement, the 3D joystick default angle start from 45 degree, users allow to adjust through "Shooting Plus V3" app. (From the border 0 to 250, default as 150).

### Charging/sleep/wake up/off function of Gamepad:

1. Charging function:
  - a. When the power is low, the LED4 indicator flashes quickly;
  - b. When charging, the LED4 indicator flashes slowly;
  - c. When fully charged, the LED4 indicator light is always on;
2. Sleep / wake up / off function:
  - a. The gamepad will automatically turn off if no operation within 60 minutes.
  - b. When you need to restart, you need to press the HOME button to wake up then you can reconnect;
  - c. When the gamepad is turned on, press and hold the HOME button for 5 seconds, the product will be turned off, and all the LED indicators will turn off;

### Notes:

1. Please do not store this product in wet or high-temperature areas.
2. Don't knap, beat, drub, pierce, or try to decompose this product, to avoid unnecessary damage to the product.
3. The product has built-in batteries, and please don ' t discard them together with the garbages.
4. Don't charge the controller in a place near the fire or other heat source.
5. Non professional personnel should not disassemble the product, otherwise it will not be covered in the after-sales warranty service.

### Accessories List:



### FCC Statement

This equipment has been tested and found to comply with the limits for a Class B digital device, pursuant to part 15 of the FCC Rules. These limits are designed to provide reasonable protection against harmful interference in a residential installation. This equipment generates, uses and can radiate radio frequency energy and, if not installed and used in accordance with the instructions, may cause harmful interference to radio communications. However, there is no guarantee that interference will not occur in a particular installation. If this equipment does cause harmful interference to radio or television reception, which can be determined by turning the equipment off and on, the user is encouraged to try to correct the interference by one or more of the following measures:

- Reorient or relocate the receiving antenna.
- Increase the separation between the equipment and receiver.
- Connect the equipment into an outlet on a circuit different from that to which the receiver is connected.
- Consult the dealer or an experienced radio/TV technician for help.

Caution: Any changes or modifications to this device not explicitly approved by manufacturer could void your authority to operate this equipment.

This device complies with part 15 of the FCC Rules. Operation is subject to the following two conditions: (1) This device may not cause harmful interference, and (2) this device must accept any interference received, including interference that may cause undesired operation.

### RF Exposure Information

The device has been evaluated to meet general RF exposure requirement. The device can be used in portable exposure condition without restriction.