



ANC BLUETOOTH HEADPHONE

ANC

Active
Noise cancelling



Manual

Please read all instructions carefully
and retain for future use

SONIC OE10W

Usage Instruction

- (1) Don't attempt to disassemble the unit and change any part, except there is operation method mentioned in the manual.
- (2) Don't expose the unit to liquid, moisture or humidity, since it is not a waterproof product.
- (3) Disconnect the unit with your BT device and move it to the safe area if the liquid get inside the unit.
- (4) Don't assemble or disassemble the unit to avoid electric shock, if there is water on your hands.
- (5) Don't expose the unit to extremely high temperature or dispose of the unit in fire as it will result in an explosion.
- (6) Don't place the unit in an electromagnetic interference environment to avoid malfunction.

Packing list

Headphones	X 1
User manual X 1	X 1
3.5mm AUX line	X 1
Charging cable	X 1

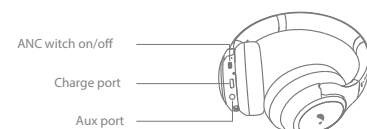
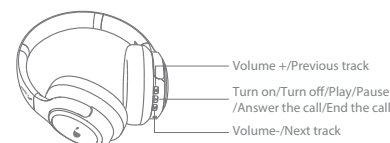


Product specification

- BT version : V5.0
- Battery capacity : 400 mAh
- Charging time : About 2.5 hours
- Transmission distance : ≥ 10 meters
- Horn impedance : $32 \Omega \pm 15\%$
- Frequency range : 20 Hz-20KHz
- Speaker size : 40 mm
- Playing time : About 15 hours
- Rated input : 5V ≈ 350 mA
- Audio interface : AUX
- SNR : 115dB ± 3 dB
- Microphone sensitivity : -38dB ± 3 dB
- ANC depth : -25dB ± 3 dB

(All technical information is subject to actual performance)

Product schematic description



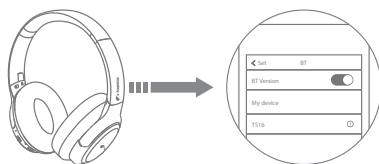
Operating instruction

1. Turn on/Turn off

- When the earphones is in turn off states,long press the button for 3 seconds to start the earphone.
- When the earphones is in turn on states, long press the button for 3 seconds to power off the earphone.

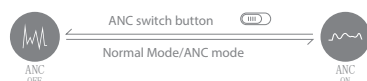
2. BT pairing

- Step 1: When the earphones is in turn off states,long press the button for 3 seconds to start the earphone.
- Step 2: Open the smart device BT list, search and find "PeopleLink Sonic OE10W",click it to connect.



3.Switch on/off ANC mode

- When the earphones is in non ANC mode,put the switch button up to open the ANC mode.
- When the earphones is in ANC mode, put the switch button down to off the ANC mode.



Reminder: After using the headset, please turn off the headphone, meanwhile switch the ANC noise reduction button to the "ANC off" side to avoid running out of power

4.During the music playing

- Single Click: Volume up
- Long press 2 seconds: Previous track
- Single click: Volume down
- Long press 2 seconds: Next track
- Single click: Play/Pause

5. Phone hands-free

- Single click: Answer the call/End the call
- Click twice: Rewind the phone
- Long press 2 seconds: Reject the call

LED light introduction

Turn on	Red and blue LED light flash alternately
Turn off	Red and blue LED light die out
ANC mode	Green LED light normally on
ANC shut off	Green LED light die out
Reconnect	Red and blue LED light flash alternately
Bluetooth connected	Red and blue LED light die out
Search the Bluetooth device	Red and blue LED light flash alternately
Bluetooth disconnect	Red and blue LED light flash alternately
Earphones charging	Red LED light normally on
Earphones fully charged	Red LED light die out
Battery low prompt	Red LED light flash 1 time every 10 seconds.

FCC statement

This device complies with Part 15 of the FCC Rules. Operation is subject to the following two conditions: (1) this device may not cause harmful interference, and (2) this device must accept any interference received, including interference that may cause u ndesired operation.

Changes or modifications to this unit not expressly approved by the party responsible for compliance could void the user's authority to operate the equipment.

NOTE: This equipment has been tested and found to comply with the limits for a Class B digital device, pursuant to Part 15 of the FCC Rules. These limits are designed to provide reasonable protection against harmful interference in a residential installation. This equipment generates, uses and can radiate radio frequency energy and, if not installed and used in accordance with the instructions, may cause harmful interference to radio communications. However, there is no guarantee that interference will not occur in a particular installation.

If this equipment does cause harmful interference to radio or television reception, which can be determined by turning the equipment off and on, the user is encouraged to try to correct the interference by one or more of the following measures:

- Reorient or relocate the receiving antenna.
- Increase the separation between the equipment and receiver.
- Connect the equipment into an outlet on a circuit different from that to which the receiver is connected.
- Consult the dealer or an experienced radio/TV technician for help.

This device and its antenna(s) must not be co-located or operation in conjunction with any other antenna or transmitter.

Radiation Exposure Statement

The device has been evaluated to meet general RF exposure requirement in portable exposure condition without restriction.

Product Model: PeopleLink Sonic OE10W PMN: Bluetooth Headphones

ISED statement

English:

This device contains licence-exempt transmitter(s)/receiver(s) that comply with Innovation, Science and Economic Development Canada's licence-exempt RSS(s). Operation is subject to the following two conditions: (1) This device may not cause interference. (2) This device must accept any interference, including interference that may cause undesired operation of the device.

French: Cet appareil contient des émetteurs/récepteurs exempts de licence qui sont conformes aux RSS exempts de licence d'Innovation, Sciences et Développement économique Canada. L'exploitation est soumise aux deux conditions suivantes : (1) Cet appareil ne doit pas provoquer d'interférences. (2) Cet appareil doit accepter toute interférence, y compris les interférences susceptibles de provoquer un fonctionnement indésirable de l'appareil.

This device meets the exemption from the routine evaluation limits in section 2.5 of RSS 102 and compliance with RSS 102 RF exposure, users can obtain Canadian information on RF exposure and compliance.

Cet appareil est conforme à l'exemption des limites d'évaluation courante dans la section 2.5 du crv - 102 et conformité avec rss 102 de l'exposition aux rf, les utilisateurs peuvent obtenir des données canadiennes sur l'exposition aux champs rf et la conformité.

This equipment complies with Canada radiation exposure limits set forth for an uncontrolled environment. Cet équipement est conforme aux limites d'exposition aux rayonnements du Canada établies pour un environnement non contrôlé.

The device has been evaluated to meet general RF exposure requirement. This equipment should be installed and operated with minimum distance 0mm between the radiator & your body. L'appareil a été évalué pour répondre aux exigences générales d'exposition aux RF. Cet équipement doit être installé et utilisé avec une distance minimale de 0 mm entre le radiateur et votre corps.