

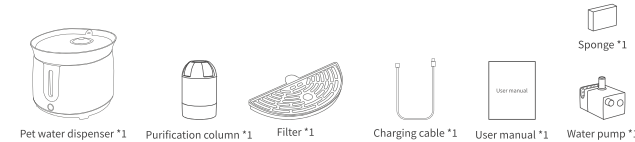
## Dimidou pet water dispenser MY01

• Instructions •  
Please read this manual carefully before use

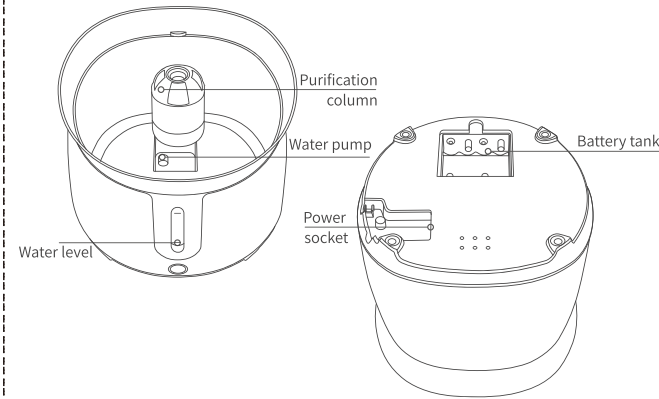
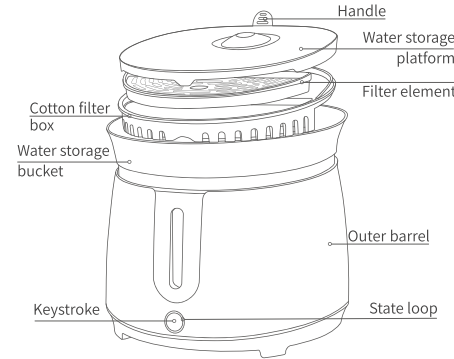
### Attention Please read this manual carefully before using the product and keep it properly

- ① Do not disassemble the equipment without permission. Improper operation may cause electric shock or fire.
- ② To avoid the risk of electric shock, please do not use it in humid and humid environment.
- ③ Please do not store this product in humid environment for a long time.
- ④ It is forbidden to touch the live switch with wet hands, and it is forbidden to pull or plug the power plug with wet hands to prevent electric shock.
- ⑤ Please use the voltage and frequency conforming to international standards. Otherwise, it may cause serious consequences such as equipment damage and even fire.
- ⑥ If your equipment is abnormal, please feel free to contact our company after sales.

### Product list After opening the equipment package, please confirm whether the equipment is in good condition, and confirm whether the accessories are complete according to the following figure.

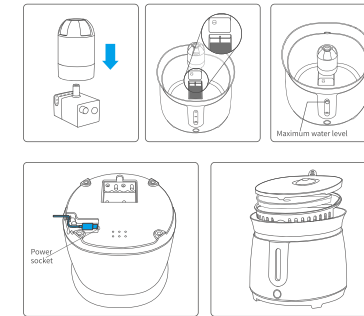


### Product introduction

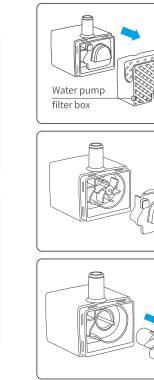


### Instructions for use

#### Equipment installation



#### Cleaning pump



# DMDPET

Tel: 400-0755-269 Zip Code: 518131  
Shenzhen Dimidou Technology Co., LTD.  
Address: 11B Haining Plaza, Dalang Street, Longhua District, Shenzhen  
Copyright © Shenzhen Dimidou Technology Co., LTD. 2022. All rights reserved.

V2.0

### APP operation The device can be configured only in the 2.4G Wi-Fi band.

#### 1. Download Smart Life

Scan the QR code on the right, click the menu in the upper right corner, and in the browser.  
Open the page to download, register and log in.  
(For Android/iOS users)  
Android users can also search and download "Smart Life" in the mobile phone mall, and register and log in.



#### 2. Connect the drying box

Plug in the drying box, turn on Bluetooth on the mobile phone, click on the upper right corner and select Add Equipment.  
In the scanned equipment list, find "DMDPET-water dispenser" and click "Connect". According to the interface prompt, enter the password of wireless network to enter the drying box operation interface.

\*The device can only be connected in the 2.4G Wi-Fi band. Please ensure that the router is connected in the 2.4G Wi-Fi band; otherwise, the device cannot be connected. After the network is configured, daily use is not affected by the Wi-Fi frequency band.

### Indicator light

When there is water shortage, the status ring displays red flashing, and when there is insufficient water, it displays red.

### Mode switching

Click the button "Continuous water supply"- "Intermittent water supply"- "Intelligent" circulation.

### Pattern description

Continuous water supply: Continuous water supply, the status ring is displayed in white.

Intermittent water supply: Water supply stops for three minutes, intermittent operation, and the status ring flashes white.

Intelligent mode: This mode needs to be connected with WIFI, and the drinking machine automatically switches water supply according to time, and the status ring flashes white.

### Filter element replacement/cleaning

Please clean the filter regularly. It is recommended to clean it every 30 days and replace it every 60 days.

### UV sterilization

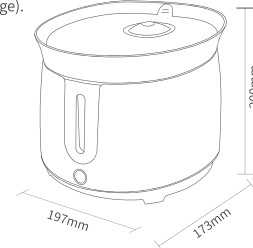
The drinking machine with sterilization module automatically sterilizes the remaining water in the water storage bin.

### Spare battery

It can be powered by 4 No.5 batteries, and the battery power is in emergency mode, which will have a longer water supply gap. It can be used for about one week (the specific time is subject to the battery charge).

### Product information

Model Number: MY01  
Product size: 197\*173\*200 mm  
Product weight: 1kg  
Material: ABS  
Power Supply: 5V=1A  
Rated Power: 3W  
Capacity: 2L  
Implementation Standard: GB 4706.1



\* The above dimensions are measured manually.  
Please understand the slight error

### Troubleshooting table

Fault phenomenon	Treatment measures
The indicator light is not on; The pump does not produce water	① Check whether power supply is connected. ② Check whether blade of pump is blocked. Please make necessary clean if yes. ③ Check whether the water is enough, and add water if it is not.
Malfunction Description	Water level is low Water is not enough, lower than water level
Equipment status	Indicator light off Waiting for connection of pump
Filter status	Clean filter Replace filter

### Guide after sale

Dear users, thank you for using DMDPET Dimidou products. Please read the following terms carefully before using this product:

1. Warranty regulations: This product is guaranteed for one year (subject to valid purchase certificate). During the warranty period, the company will provide free maintenance services for the quality problems of the products themselves.

2. Non-warranty regulations

The following conditions (but not limited to the following) are not covered by the warranty:  
(1) Damage caused by improper handling, use, storage and maintenance by users, or artificial damage.

(2) Repair by the maintenance department not designated by our company, or assembly, disassembly and maintenance by users themselves.

(3) Product accessories (such as plastic cups, etc.) and printed matter (such as instructions, etc.).

(4) Use gifts and accessories that are not standard for our products, causing damage.

(5) The model contained in the invoice is inconsistent with the model of the repaired product or has been altered.

(6) The warranty period is exceeded.

(7) Products for non-household use (such as business, commercial and corporate collective).

8 There is no valid invoice.

Damage caused by force majeure.  
Do not belong to the scope of warranty products, will provide fee-based maintenance services, our customer service center is still enthusiastic for you.

### After-sales warranty card

User name	Contact number
User address	
Product model	Date of purchase
Purchasing channel	
Problem record	

### FCC Statement:

This equipment has been tested and found to comply with the limits for a Class B digital device, pursuant to part 15 of the FCC Rules. These limits are designed to provide reasonable protection against harmful interference in a residential installation. This equipment generates, uses and can radiate radio frequency energy and, if not installed and used in accordance with the instructions, may cause harmful interference to radio communications. However, there is no guarantee that interference will not occur in a particular installation. If this equipment does cause harmful interference to radio or television reception, which can be determined by turning the equipment off and on, the user is encouraged to try to correct the interference by one or more of the following measures:

- Reorient or relocate the receiving antenna.

- Increase the separation between the equipment and receiver.

- Connect the equipment into an outlet on a circuit different from that to which the receiver is connected.

- Consult the dealer or an experienced radio/TV technician for help.

Caution: Any changes or modifications to this device not explicitly approved by manufacturer could void your authority to operate this equipment.

This device complies with part 15 of the FCC Rules. Operation is subject to the following two conditions: (1) This device may not cause harmful interference, and (2) this device must accept any interference received, including interference that may cause undesired operation.