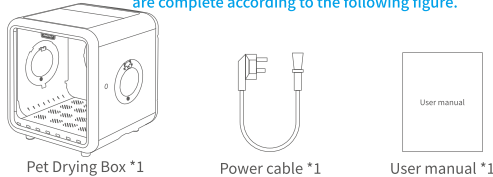
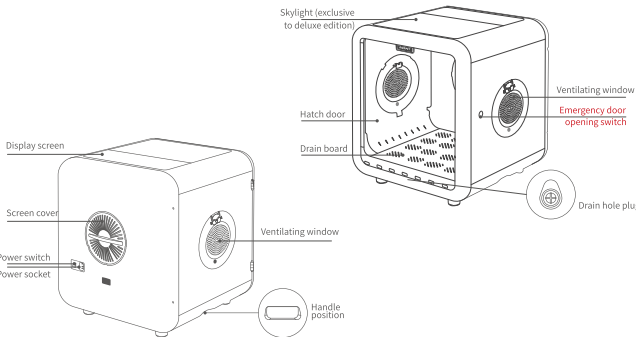


DMD PET DRYING BOX
MH66• Instructions •
Please read this manual carefully before use**Attention** Please read this manual carefully before using the product and keep it properly

- ① Do not disassemble the equipment without permission. Improper operation may cause electric shock or fire.
- ② To avoid the risk of electric shock, please do not use it in humid and humid environment.
- ③ Please do not store this product in humid environment for a long time.
- ④ It is forbidden to touch the live switch with wet hands, and it is forbidden to pull or plug the power plug with wet hands to prevent electric shock.
- ⑤ Please use the voltage and frequency conforming to international standards. Otherwise, it may cause serious consequences such as equipment damage and even fire.
- ⑥ If your equipment is abnormal, please feel free to contact our company after sales.

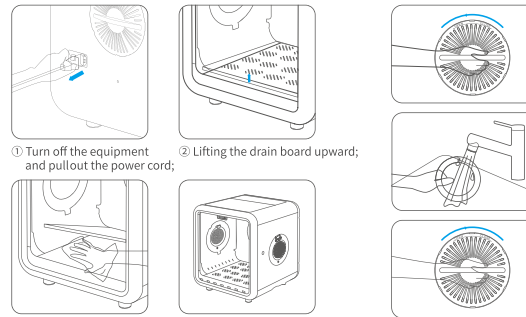
Product list After opening the equipment package, please confirm whether the equipment is in good condition, and confirm whether the accessories are complete according to the following figure.**Product introduction****APP operation** The device can be configured only in the 2.4G Wi-Fi band.**1. Download Smart Life**

Scan the QR code on the right, click the menu in the upper right corner, and in the browser. Open the page to download, register and log in. (For Android/iOS users) Android users can also search and download "Smart Life" in the mobile phone mall, and register and log in.

2. Connect the drying box

Plug in the drying box, turn on Bluetooth on the mobile phone, click on the upper right corner and select Add Equipment. In the scanned equipment list, find "DMDPET-Intelligent Drying Box" and click "Connect". According to the interface prompt, enter the password of wireless network to enter the drying box operation interface.

★The device can only be connected in the 2.4G Wi-Fi band. Please ensure that the router is connected in the 2.4G Wi-Fi band; otherwise, the device cannot be connected. After the network is configured, daily use is not affected by the Wi-Fi frequency band.

**Daily cleaning**

Rotate the net cover and take out the filter cotton. After cleaning and drying, install it back to the equipment.

DMDPET

Tel: 400-0755-269 Zip Code: 518131
Shenzhen Dimidou Technology Co., LTD.
Address: 11B Haining Plaza, Dalang Street, Longhua District, Shenzhen
Copyright © Shenzhen Dimidou Technology Co., LTD. 2022. All rights reserved.

V2.0

Instructions for use**Turn on**

After plugging in the power supply, the device enters "standby mode".

Open the hatch

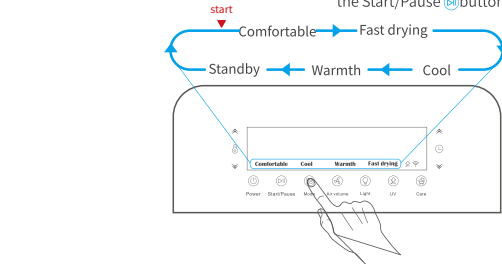
Click the power button to open the hatch.

Mode switching

① Click the mode button and switch cyclically according to the mode shown below;
② Start running: After selecting the mode, click the Start/Pause button to start running.

Unlock/Lock

Press the Start/Pause key for a long time to unlock/lock the drying box.

**Drying mode**

In the drying process, the temperature, air volume and time can be adjusted as needed.

- ① Click the Mode button to switch to the desired drying mode;
- ② Click the temperature button, adjust the temperature through the increase or decrease key, and then press the temperature button to determine;
- ③ Click the air volume button to adjust the air volume, and then press the Start/Pause button to determine;
- ④ Click the time button, adjust the time through the increase or decrease key, and then press the time button to determine;
- ⑤ After the setting is completed, click the Start/Pause button to start running.
- ⑥ After drying, the hatch opens automatically.

Cat house mode

- ① Click the mode button to switch to the desired cat house mode;
- ② Click the air volume button to adjust the air volume, and then press the Start/Pause button to determine;
- ③ After the setting is completed, click the Start/Pause button to start running.

Care model

- ① Click the conservation button to switch to the conservation mode;
- ② After the setting is completed, click the start-stop button to start running.

UV mode

Do not let pets into the drying box after the sterilization mode is turned on.

- ① Click the UV button to switch to sterilization mode;
- ② After the setting is completed, click the Start/Pause button to start running.

Lighting operation

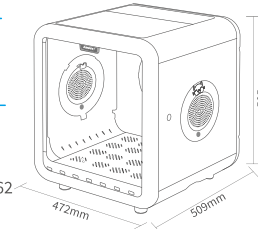
In the startup state, press the light button to open or close; When the light is on, press the light button for a long time to adjust the brightness.

Shut down

In the startup state, press the power button for 3 seconds to shut down.

Product information

Model Number: MH66 Space capacity: 66L
Working environment: 25-35°C Material: ABS PC
Rated input power: 1600W Timing range: 1-120min
Noise (pet nest): 35-55dB(a) CMII ID: 2020DP6462



* The above dimensions are measured manually.
Please understand the slight error

Troubleshooting table

Fault description	Checking flow/Solution
Unable to boot	whether the power switch is turned on.
Unable to reach the set temperature	Whether the door is closed and the ambient temperature is too low (recommended indoor temperature 25-35°C)
Poor drying effect	The air volume and temperature are set too low.
Error code E1: High temperature anomaly	Turn off the power supply of the equipment and reboot it after 10 seconds.
Error code E2: Abnormal communication or temperature and humidity sensor	Turn off the power supply of the equipment and reboot it after 10 seconds.
Error code E3: NTC data exception	Turn off the power supply of the equipment and reboot it after 10 seconds.
Error code E4: Abnormal fan speed feedback	Turn off the power supply of the equipment and reboot it after 10 seconds.
Error code E5: PTC heating anomaly	Turn off the power supply of the equipment and reboot it after 10 seconds.

Guide after sale

Dear users, thank you for using DMDPET Dimidou products. Please read the following terms carefully before using this product:

1. Warranty regulations: This product is guaranteed for one year (subject to valid purchase certificate). During the warranty period, the company will provide free maintenance services for the quality problems of the products themselves.

2. Non-warranty regulations

The following conditions (but not limited to the following) are not covered by the warranty:
(1) Damage caused by improper handling, use, storage and maintenance by users, or artificial damage.

(2) Repair by the maintenance department not designated by our company, or assembly, disassembly and maintenance by users themselves.

(3) Product accessories (such as plastic cups, etc.) and printed matter (such as instructions, etc.).

(4) Use gifts and accessories that are not standard for our products, causing damage.

(5) The model contained in the invoice is inconsistent with the model of the repaired product or has been altered.

(6) The warranty period is exceeded.

(7) Products for non-household use (such as business, commercial and corporate collective).

8 There is no valid invoice.

Damage caused by force majeure.

Do not belong to the scope of warranty products, will provide fee-based maintenance services, our customer service center is still enthusiastic for you.

After-sales warranty card

User name		Contact number
User address		
Product model		Date of purchase
Purchasing channel		
Problem record		

FCC Statement:

This equipment has been tested and found to comply with the limits for a Class B digital device, pursuant to part 15 of the FCC Rules. These limits are designed to provide reasonable protection against harmful interference in a residential installation. This equipment generates, uses and can radiate radio frequency energy and, if not installed and used in accordance with the instructions, may cause harmful interference to radio communications. However, there is no guarantee that interference will not occur in a particular installation. If this equipment does cause harmful interference to radio or television reception, which can be determined by turning the equipment off and on, the user is encouraged to try to correct the interference by one or more of the following measures:

- Reorient or relocate the receiving antenna.

- Increase the separation between the equipment and receiver.

- Connect the equipment into an outlet on a circuit different from that to which the receiver is connected.

- Consult the dealer or an experienced radio/TV technician for help.

Caution: Any changes or modifications to this device not explicitly approved by manufacturer could void your authority to operate this equipment.

This device complies with part 15 of the FCC Rules. Operation is subject to the following two conditions: (1) This device may not cause harmful interference, and (2) this device must accept any interference received, including interference that may cause undesired operation.