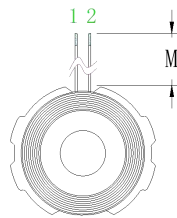
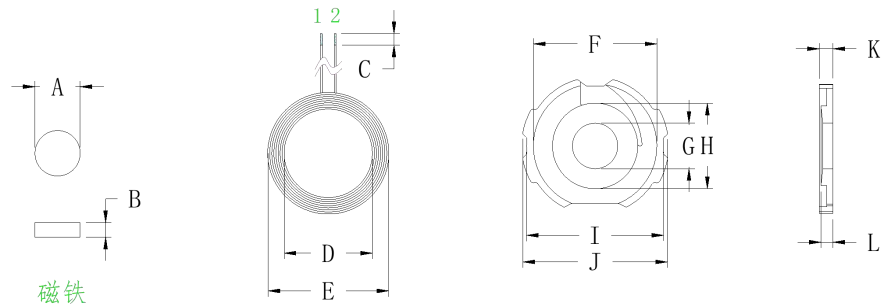


一、Plane structure diagram: unit:MM



A	7.65 ± 0.05
B	2.0 ± 0.05
C	2 ± 1
D	14 ± 0.2
E	20.7 ± 0.3
F	21 ± 0.2
G	7.7 ± 0.05
H	13.5 ± 0.2
I	23.5 ± 0.2
J	25 ± 0.3
K	2.5 ± 0.1
L	2.25 ± 0.1 中柱高度
M	1.5 ± 1

二、Product Parameter:

Foot position	Wire diameter	Number of turns	Remarks
1 - 2	0.08*24P	14	Hot air stranding wire

三、Technical requirements:

1. Fix the end of the wire to prevent loose and broken wires
2. According to customer requirements, the long thread is cut and tinned, and the tinning depth is 2 ± 1 MM
3. Point the appropriate white glue on the soft magnetic sheet, paste the coil, and ensure that the product surface is clean and tidy in the process
4. The soft magnetic sheet used is with round holes, without damage
5. Additional process (according to customer requirements) : Install 7.65x2.0mm magnet in the middle round hole of the finished product and in the finished product

四、Electrical parameter:

1.inductance, Q value:

$$PIN \quad 1 - 2 = 8.1\mu H \pm 0.2\mu H$$

$$Q \text{ value} \geq 25$$

The above inductance values are based on Quanhua 1062A instrument, 10KHZ/0.3Vrms as the standard or equivalent instrument.

Q value is based on Quanhua 1062A instrument, 100KHZ/0.3Vrms as standard or equivalent instrument

五、bill of materials:

number	name	material	supplier	Remarks
1	Hot air stranding wire	0.08X24P	Weihaan or equivalent	
2	Magnetic sheet	G25 Soft substrate	Tiantong or equivalent	
3	tin	High temperature environmental	Thousand Islands or	
4	White glue	BY882	Moon or equivalent	
5	Strong magnetic	7.65*2.0(Stronger than	United win or equivalent	Additional process,
6	Double-sided adhesive	613-14mm	Honghui or d	Blue font