

User Manual

1. Preface

Thank you for purchasing contact-free smart baby monitor.

This manual describes the purpose, function, and safe use of the device. Before using this device, please read and fully understand the contents of this manual to ensure that you can use this device correctly and ensure the safety of the supervised and the operator.

The release version of the software is: V1.0

2. Safety information

Before using this device, please read this manual carefully and fully understand the relevant warnings and risks.

This device does not replace the medical diagnosis of a professional doctor.

Please use the original power adapter, using other adapters may damage the device.

Do not forcefully insert or pull out, so that the socket is damaged.

Children please use under adult supervision.

When the device is in the monitoring state, please do not move it at will, so as not to affect the accuracy of the data.

After downloading the mobile APP, please ensure that the

Bluetooth, positioning, and WiFi functions of the mobile phone are enabled in advance and allow the APP to use the relevant permissions, otherwise the device may not be connected to the mobile network.

This device is for indoor use only.

This device can only be used below 2000 meters above sea level.

The measurement results of this device are for reference only and cannot be directly used as a basis for clinical treatment.

We do not recommend the use of this device if you have a pacemaker or other implanted device in your body. Follow your doctor's advice if necessary. Note: Implantable devices here refer to devices that work with electricity in the body.

This device cannot be used with a defibrillator.

This device is not intended for use during CT or Magnetic Resonance (MRI) procedures.

This device cannot be used in flammable environments (eg, oxygen-enriched environments).

Do not submerge this device by swimming in water.

Do not immerse the device in water or other liquids.

Do not use acetone or other volatile solutions to clean this device.

Do not collide or squeeze the device strongly, if the casing is broken, please stop using it.

This device should not be placed in a pressure vessel or gas sterilization equipment.

Do not disassemble the device at will, otherwise it will cause machine failure or affect the normal operation of the device.

This device cannot be placed in the following environments: direct sunlight, high temperature, high humidity, close to water or fire sources, high electromagnetic influence.

The measurement results of this device cannot distinguish all diseases, and the device is not regarded as a medical device. If you feel unwell, you should consult your doctor immediately.

Do not use this device for self-diagnosis without consulting your doctor, and especially do not take new medications without doctor's permission.

This device cannot replace professional heart or other organ function measurement equipment. Medical ECG measurement requires professional and complete measurement.

Dispose of waste in accordance with relevant laws and regulations.

3. Product introduction

(1) Product name and model

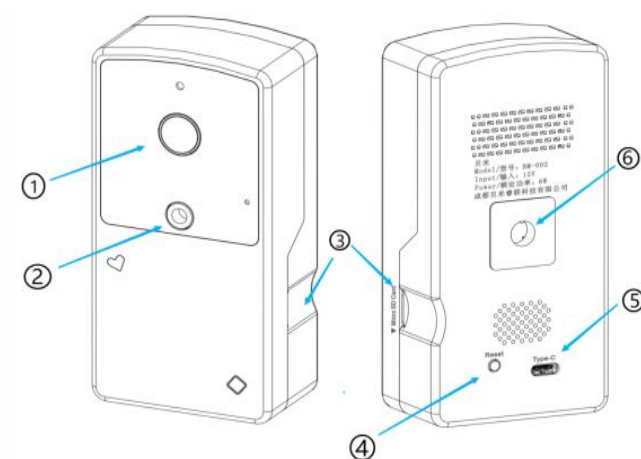
Product name: Smart Baby Monitor

Product Model: CH0100

(2) Intended use

It is suitable for real-time continuous monitoring of vital signs, such as heart rate, breathing index, body temperature and other vital signs of infants, and timely alarming for abnormal vital signs, such as: abnormal heart rate, abnormal breathing, risk of suffocation, risk of high temperature scalding, hot, cold, fever, etc. Timely early warning and alarm notification, intelligent data analysis report for infant sleep and growth.

(3) Overview CH0100



- | | |
|---------------------|----------------------|
| ①HD Camera | ②Infrared Detectors |
| ③Micro-SD Card Slot | ④Reset |
| ⑤TypeC Power Port | ⑥Stand Mounting Hole |

(4) Product components

Components: smart baby monitor, stand, power adapter, Micro SD

Card, Ruibao Genie/ Ruibao APP.

4. Preparation before use

(1) Preparation for unpacking

Before unpacking, please check the box carefully. If you find any damage, please contact the carrier or our company immediately. If the package is complete, please unpack it in the correct way, carefully take the device and other components out of the box, and check whether there is any mechanical damage to the device and whether the items are complete. If you have any questions, please contact our company immediately.

(2) Warnings and precautions

Please save the box and packing materials for future shipping or storage.

Please keep the warranty card for warranty use.

When disposing of packaging materials, you must follow local regulations or the hospital's waste disposal system and keep packaging materials out of the reach of children.

The device may be contaminated by microorganisms during storage, transportation and use. Please confirm whether the packaging is in good condition before use.

5. How to use

(1) Before use

Before use, please pay attention to the following points to ensure the accuracy of monitoring data.

- a. Only use the power supply equipment and accessories specified in this product;
- b. The device has an alarm function for abnormal vital signs, and the alarm has a certain early warning function;
- c. Ungrounded equipment next to the patient and interference from electrosurgery can cause waveform instability;
- d. Please do not block the device during use to avoid interference with the measurement results (except for ordinary textiles).

(Vibration will affect the measurement accuracy of the device, please avoid the device facing the vibration source. Such as curtains, running fans, etc.)

The device installation diagram is shown in the following figure:



(2) Use steps

- a. Mobile APP installation: If you are an Android user, please use (WeChat/browser) to scan the QR code in the lower right corner of the "Instruction Card" in the product package to download the "Ruibao Genie/Ruibao APP" to install; if you are an IOS user, please search for "Ruibao Genie" in the APP Store, download and install it; if you are an IOS user, you can also use (WeChat/browser) to scan the QR code of "Instruction Card" in the product package, and download and install the "Ruibao Genie APP";
- b. Power on the device: please use the special power adapter provided by us to power the device, please be careful not to let the baby get close to the power source;
- c. Connect App: Open the successfully downloaded and installed Ruibao Genie/Ruibao APP, the user registers and logs in, enters the

APP and clicks the “Pair Device” button on the APP homepage, and follows the prompt steps to set the device network. Please pay attention to reading the prompt text in the process of network pairing. Every step of operation should be based on reading and understanding the prompt text. If there is pairing failure or unsuccessfully pairing for a long time, under the power-on, please press and hold the reset button for 15s, and then restart the network pairing process.

6. Data view

- a. After the device is successfully connected to the network, various monitoring data can be viewed in the APP;
- b. If you want to share your account, please find the share button and click it, the sharing QR code will pop up on the mobile interface, and the shared user needs to scan the shared QR code to log in on the APP login interface.

7. Network security instructions

- a. When the APP has an update request, we will notify the user in the form of an APP pop-up window, please pay attention to check the APP update status, and keep the latest version of the APP to ensure the experience of using the device;

- b. Note that your mobile phone must meet: Android 6.0 or later, iOS 9.0 or later;
- c. Please use the home 2.4G WiFi during the network pairing process, instead of using the home 5G WiFi or using the mobile phone hotspot.

8. OTA upgrade warning

During the OTA upgrade process, please wait for the mobile phone to indicate that the OAT upgrade is successful. During the upgrade process, please keep the mobile phone and the device connected to the Internet. Please do not disconnect the power supply of the device at will during the upgrade process to prevent the device from failing to start normally.

9. Maintenance

This device must be repaired by the designated after-sales service center (provided by the seller, if necessary, please ask the seller for the contact information of the designated after-sales service center), otherwise the warranty will not be enjoyed.

With proper maintenance, the expected life of this device is 5 years.

10. Recycling

Relevant waste, residues, etc., as well as the disposal of equipment and accessories at the end of their service life, should not be discarded at will, and should comply with local regulations. This equipment must be taken to the appropriate facility when planning to discard it, or contact us for recovery and recycling.

11. Questions and Answers

Why can't the device perform data collection?

Answer: 1. Please make sure to use a dedicated power adapter for power supply; 2. Please make sure that the pairing network uses 2.4G WiFi for home use; 3. Please ensure that the mobile Internet data is turned on; 4. Contact the local agent to solve the problem.

12. Warranty

From the date of purchase, in addition to the one-year warranty provided by the host, the rest of the accessories provide a six-month free warranty. The starting date is the purchase invoice date.

You must ask the clerk to stamp this warranty card when purchasing this product. When requesting free warranty service, this warranty card and purchase invoice must be presented.

When requesting warranty service, please send this product to a

designated repair center or sales store for repair.

Product damage due to the following conditions is not covered by the warranty:

- a. Disassemble or modify the product without authorization;
- b. Failure to operate correctly according to the instructions for use: collision, drop, immersion in water;
- c. Improper repairs by unauthorized organization, etc.;
- d. Quality defects caused by force majeure (man-made damage, wear and tear, and problems caused by unexpected circumstances).

13. Help & Support

If you want to know more product information or need our technical support, please scan the QR code at this manual cover, and follow our Wechat public account. Look forward to your consultation.

FCC Warning:

This equipment has been tested and found to comply with the limits for a Class B digital device, pursuant to part 15 of the FCC Rules. These limits are designed to provide reasonable protection against harmful interference in a residential installation. This equipment generates, uses and can radiate radio frequency energy and, if not installed and used in accordance with the instructions, may cause harmful interference to radio communications. However, there is no guarantee that interference will not occur in a particular installation. If this equipment does cause harmful interference to radio or television reception, which can be determined by turning the equipment off and on, the user is encouraged to try to correct the interference by one or more of the following measures:

- Reorient or relocate the receiving antenna.
- Increase the separation between the equipment and receiver.
- Connect the equipment into an outlet on a circuit different from that to which the receiver is connected.
- Consult the dealer or an experienced radio/TV technician for help.

Caution: Any changes or modifications to this device not explicitly approved by manufacturer could void your authority to operate this equipment.

This device complies with part 15 of the FCC Rules. Operation is subject to the following two conditions:

(1) This device may not cause harmful interference, and (2) this device must accept any interference received, including interference that may cause undesired operation.

This equipment complies with FCC radiation exposure limits set forth for an uncontrolled environment. This equipment should be installed and operated with minimum distance 20cm between the radiator and your body.