

120克双铜，过油，单黑印刷，五折页，尺寸: 65*70mm

YOCOM

WIRELESS MICROPHONE
Lightning Receiver

YM-L02

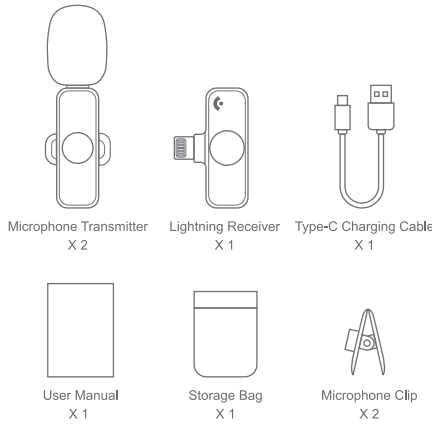
INTRODUCTION

Thanks for choosing our product.
This product is a smart wireless microphone that provides professional-grade recording output. Plug and play, no App required. Multiple uses: It can be used in online live broadcasts, video Vlog shooting, program interviews, recording, video teaching, and other occasions.

BASIC PRODUCT SPECIFICATIONS

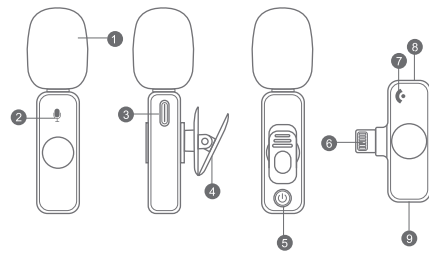
Brand: YOCOM
Model Name: YM-L02
Connector Port: Lightning
Charging Port: Type-C
Signal Transmission: 2.4GHz
Operation Time: About 4-6H
Charging Time: About 90 Minutes
Charging Current: 60mA
Frequency Range: 20-20KHz
Compatible Devices: iPhone or iPad with Lightning Port
Transmitting Distance: 20 Meters (barrier-free distance)
Software Compatibility: All Software Compatibility

PACKING LIST



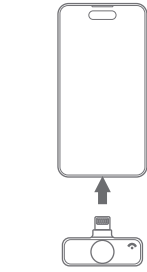
PRODUCT DIAGRAMMATIC PRESENTATION

- 1 Windproof net
- 2 Microphone indicator
- 3 Microphone Type-C charging port
- 4 Microphone clip
- 5 Switch key
- 6 Lightning port to connect iPhone
- 7 Receiver indicator
- 8 Microphone reset key
- 9 Lightning charger port of the receiver

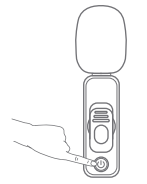


HOW TO USE

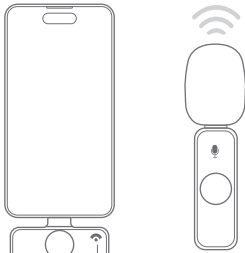
Step 1: Connect the Lightning receiver to the iPhone with the Lightning port.
The connection is successful if the indicator light is on.



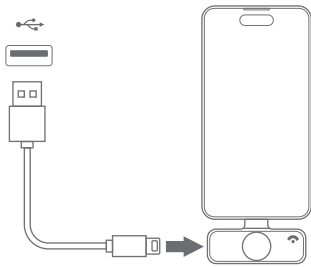
Step 2: Press the switch key of the microphone, the indicator light turns green and then power is turned on.



Step 3: The indicator green light of the receiver keeps always on, then open the phone camera, live App, or other Apps and then use the microphone to receive sound.



The indicator Green light always on



Special Note

For the use of ⑨ Lightning port: there is no battery in the Lightning receiver and no need to recharge during live streaming. If the iPhone is low power during Live it can be recharged directly through ⑨ Lightning port.

MORE DETAIL

Microphone Transmitter		
Function	How to use	Light
Power on	Press switch key once	Green light on
Power off	Press switch key about 3 seconds	Light off
Pairing		Red and green flash alternately
Paired		Green light keeps on
Pause	Press switch key once	The green light flashes slowly during pause
Reset	Press reset key for 3 seconds	
Low battery alarm	Power on state	The red and green lights come on every 10 seconds
Charging	Charging with Type-C cable	The red light goes out when it is fully charged

Receiver		
Function	How to use	Light
Power on	Plug in the device	Green light on
Power off	Plug off the device	Light off
Pairing		Green light flashes slowly
Paired		Green light on

WARRANTY CERTIFICATE

Name:	
Address:	
Tel.No:	
Date of purchase: (dd/mm/yy)	
Store name:	
Warranty period:	

If you have any question about this product, welcome to connect us.
We will try our best to solve your problem within 24h,Office Customer Service E-mail:
yocom.us1@gmail.com

YOCOM

Email : yocom.us1@gmail.com

YOCOM

WIRELESS MICROPHONE
Lightning Receiver

YM-L01

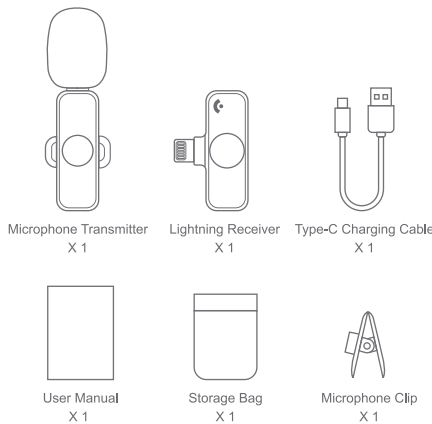
INTRODUCTION

Thanks for choosing our product.
This product is a smart wireless microphone that provides professional-grade recording output. Plug and play, no App required. Multiple uses: It can be used in online live broadcasts, video Vlog shooting, program interviews, recording, video teaching, and other occasions.

BASIC PRODUCT SPECIFICATIONS

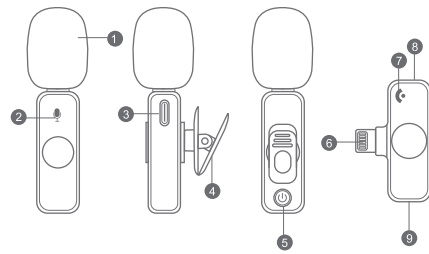
Brand: YOCOM
Model Name: YM-L01
Connector Port: Lightning
Charging Port: Type-C
Signal Transmission: 2.4GHz
Operation Time: About 4-6H
Charging Time: About 90 Minutes
Charging Current: 60mA
Frequency Range: 20-20KHz
Compatible Devices: iPhone or iPad with Lightning Port
Transmitting Distance: 20 Meters (barrier-free distance)
Software Compatibility: All Software Compatibility

PACKING LIST



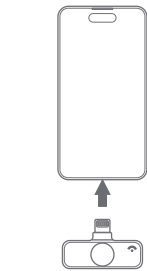
PRODUCT DIAGRAMMATIC PRESENTATION

- 1 Windproof net
- 2 Microphone indicator
- 3 Microphone Type-C charging port
- 4 Microphone clip
- 5 Switch key
- 6 Lightning port to connect iPhone
- 7 Receiver indicator
- 8 Microphone reset key
- 9 Lightning charger port of the receiver

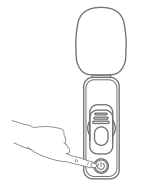


HOW TO USE

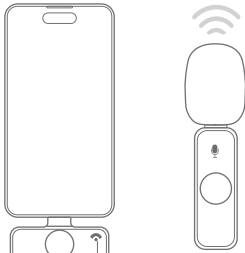
Step 1: Connect the Lightning receiver to the iPhone with the Lightning port.
The connection is successful if the indicator light is on.



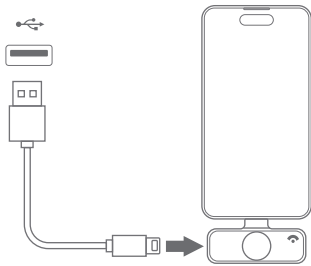
Step 2: Press the switch key of the microphone, the indicator light turns green and then power is turned on.



Step 3: The indicator red light of the receiver keeps always on, then open the phone camera, live App, or other Apps and then use the microphone to receive sound.



The indicator red light always on



Special Note

For the use of ⑨ Lightning port: there is no battery in the Lightning receiver and no need to recharge during live streaming. If the iPhone is low power during Live it can be recharged directly through ⑨ Lightning port.

MORE DETAIL

Microphone Transmitter		
Function	How to use	Light
Power on	Press switch key once	Green light on
Power off	Press switch key about 3 seconds	Light off
Pairing		Red and green flash alternately
Paired		Green light keeps on
Pause	Press switch key once	The green light flashes slowly during pause
Reset	Press reset key for 3 seconds	
Low battery alarm	Power on state	The red and green lights come on every 10 seconds
Charging	Charging with Type-C cable	The red light goes out when it is fully charged

Receiver		
Function	How to use	Light
Power on	Plug in the device	Red light on
Power off	Plug off the device	Light off
Pairing		Red light flashes slowly
Paired		Red light on

WARRANTY CERTIFICATE

Name:	
Address:	
Tel.No:	
Date of purchase: (dd/mm/yy)	
Store name:	
Warranty period:	

If you have any question about this product, welcome to connect us.
We will try our best to solve your problem within 24h,Office Customer Service E-mail:
yocom.us1@gmail.com

YOCOM

Email : yocom.us1@gmail.com

FCC Warning:

This equipment has been tested and found to comply with the limits for a Class B digital device, pursuant to part 15 of the FCC Rules. These limits are designed to provide reasonable protection against harmful interference in a residential installation. This equipment generates, uses and can radiate radio frequency energy and, if not installed and used in accordance with the instructions, may cause harmful interference to radio communications. However, there is no guarantee that interference will not occur in a particular installation. If this equipment does cause harmful interference to radio or television reception, which can be determined by turning the equipment off and on, the user is encouraged to try to correct the interference by one or more of the following measures:

- Reorient or relocate the receiving antenna.
- Increase the separation between the equipment and receiver.
- Connect the equipment into an outlet on a circuit different from that to which the receiver is connected.
- Consult the dealer or an experienced radio/TV technician for help.

Caution: Any changes or modifications to this device not explicitly approved by manufacturer could void your authority to operate this equipment.

This device complies with part 15 of the FCC Rules. Operation is subject to the following two conditions:

(1) This device may not cause harmful interference, and (2) this device must accept any interference received, including interference that may cause undesired operation.

This equipment complies with FCC radiation exposure limits set forth for an uncontrolled environment. This equipment should be installed and operated with minimum distance 0cm between the radiator and your body.