

User Manual of Immers Gallery

“Open the Door of Holographic Metaverse
to Feel the New Vision of Naked Eye”

Thanks for choosing the Immers Gallery to bring you an immersive visual feast.

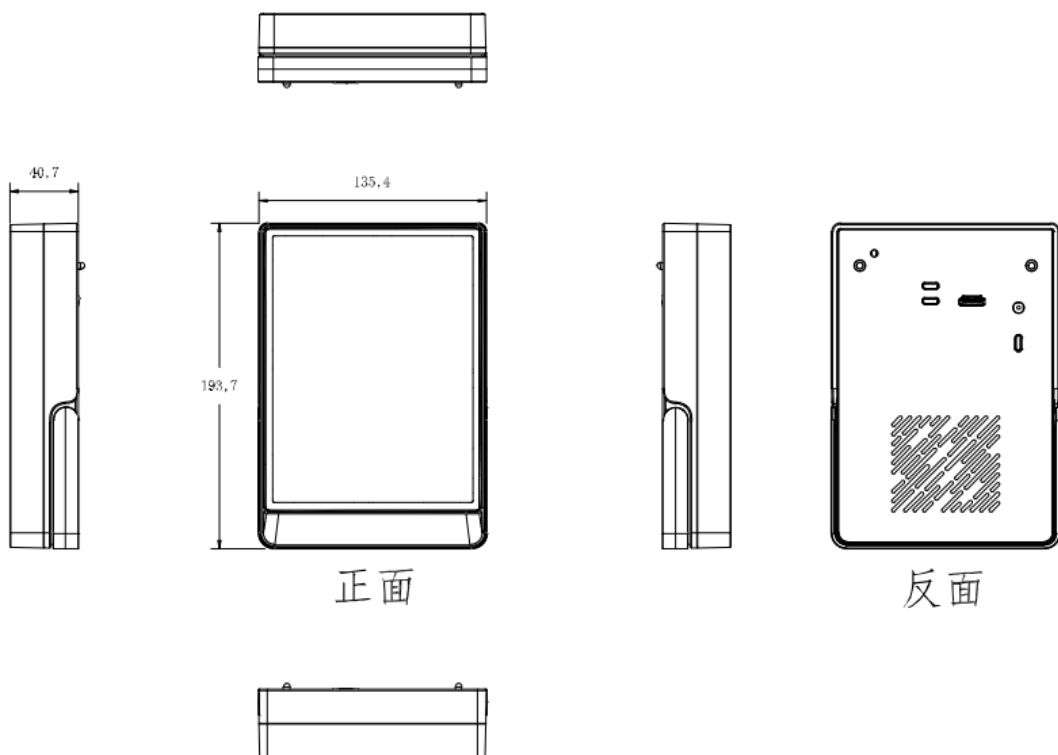
Contents

- 01 Safety Instruction
- 02 Product Information
- 03 Instructions
- 04 Fault Analysis and Clearing
- 05 Cautions

01 Safety Instruction

1. Please read the user manual carefully and save for reference before using the product.
2. Product picture & descriptions are for reference only. Detailed information is in accordance with the final product.
3. Please follow the instructions carefully.
4. Design and specifications of this product are subject to change without prior notice.

02 Product Information



Product Name	Holo Frame
Model No	IG079-Pro
Screen	7.9 Inch LCD Display
Resolution	1536*2048
Dimensions	193.7mm×135.4mm×40.7mm
Usage Environment	Indoor only
View Distance	0.5m above
Display Area	159.7*119.8mm
Brightness	220cd/m ²
Contrast Ratio	1000:1
Response Time	35ms
Package Size	240*191*85mm
OS	Android 11
Touch	No
Power Supply	100V ~ 240V AC,50~60Hz, 12V/2.5A
Input	TypeC
View Points	49
Filter Type	Holo Lens
Player	Holo OS

Content Format	Multi-tile
Plug_In	Unity plug-in

Product Configuration

01	Immers Gallery*1
02	Adaptor*1
03	Power Cord*1
04	Type-C Connector*1
05	Clean Wiper
06	User Manual*1

03 Instructions

Power on

Connect power cord, touch and hold the power button to power on, wait few seconds to enter operation interface.

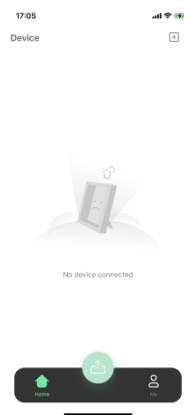
Network Binding and Unbinding

Preparations: Please keep the device be fully charged before network connection. Click setting, select network and enter password to make connection.

- 1) **Binding:** Download “Immers” app to your phone and sign up as required. Click the top right corner to add device, scan the QR code of device ID on Immers Gallery, reminder of “connection succeed” means binding is completed. (“Immers” account can be bound to multiple Immers Gallery, but a single device can be bound to one account only which can be bonded to other account after unbinding.)



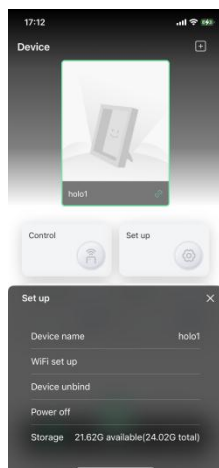
Scan QR code to download Immers app



Download Immers



Immerse Gallery



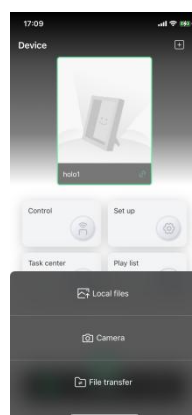
Setting

Enter account page, scan the QR code to make binding

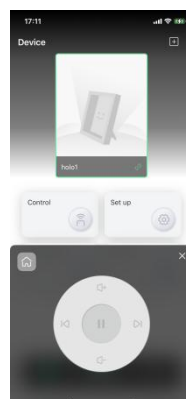
2) **Unbinding:** Go to mobile app setting, click “unbind device”.

Unbind Device

Photo and Video Transmission



To bind the device in home page



There are 2 transmission methods optional.

- 1) USB Flash: Put USB flash to the type c interface via adaptor, copy content to the local file of Immers Gallery (only picture format jpg/png and video format mp4 supported so far).
- 2) Immers App: Open Immers app, select corresponding Immers Gallery, click upload button, select camera or local picture, which will be uploaded to server to make 3D conversion, then to be downloaded to Immers Gallery automatically to play (all uploaded file can be viewed in playlist of app setting).

Camera or Local Picture

Playlist

Content Playback

- 1) Select video or photo file in Immers Gallery to play
To select 3D content format and 3D focus setting in playback interface if needed.
- 2) Select corresponding device through the app, click control button to adjust play, pause, volume up and down, previous picture and next picture.

Immers Control Interface

Power Off

- 1) Touch and hold the power button for 3 seconds to power off.
- 2) Go to setting page of the app, click power off.

Immers Power Off Setting

04 Fault Analysis and Clearing

Fault Analysis and Clearing

- 1) Display does not light up: Please check the remaining battery capacity and power supply, make sure the display is power in.
- 2) Flashing Screen: Restart the device, if the fault cannot be rectified, please contact our technical staff.
- 3) No Sound: Go to setting---sound to adjust volume.

05 Cautions

Operation and Maintenance

1) Cautions

The surface of display is glass, please do not apply mechanical impact, such as impact or height crash.

Do not apply too much pressure to display surface or the connection area of the LCD module to avoid tonal variation.

If the display is spotless, please wipe it with a soft dry cloth gently. If solvent is required, only alcohol can be used.

2) Environment

Keep a dry environment and avoid chemicals.

Do not expose the product to rain, humidity, or direct sunlight, so as not to affect normal use.

Storage temperature :-20°C to 60°

Storage temperature :-20°C to 60°

Relative humidity: ≤65%

Do not plug the ventilation hole.

Do not put the display near radiator, heat source or any other equipment that may affect normal ventilation.

3) Tips for Recycling

To protect the environment better, please comply with the national laws and regulations on electrical and electronic product recycling and treatment, and hand it over to the local manufacturer with the national recognized recycling and treatment qualification for recycling and treatment when the user no longer needs the product, or the product is life terminated.

4) The following problems may occur, which is normal occurrence and not quality issue of the display:

- a. Due to the specialty of LCD display, screen flicker may occur on initial use. Please power off and restart the display to ensure that the screen does not flicker again.
- b. The effective pixels of the LCD display reach or exceed 99.99%, but there will also be 0.01% or less pixel loss or brightness loss in the display.
- c. The image brightness may be slightly uneven when you use different desktop patterns.
- d. Due to the specialty of LCD display, there will be no pixel residue in normal operation. However, when the same static image is displayed for a long time and

then the image is switched, the previous residual image may continue to be retained, which is called "residual image". The best way to avoid it is to run a screen saver with monochrome or moving images when you're not using the system.

Manufacturer: Shenzhen Smart Superv Co., Ltd

ADD: 8F, Block A7, Nanshan Intelligent Park, 1001 Xueyuan Avenue, Taoyuan Town, Nanshan District, Shenzhen, China

Support Line:

Homepage:<https://www.smartsuperv.com/>

This device complies with part 15 of the FCC Rules. Operation is subject to the following two conditions: (1) This device may not cause harmful interference, and (2) this device must accept any interference received, including interference that may cause undesired operation.

FCC warning:

Any Changes or modifications not expressly approved by the party responsible for compliance could void the user's authority to operate the equipment.

Note: This equipment has been tested and found to comply with the limits for a Class B digital device, pursuant to part 15 of the FCC Rules. These limits are designed to provide reasonable protection against harmful interference in a residential installation. This equipment generates uses and can radiate radio frequency energy and, if not installed and used in accordance with the instructions, may cause harmful interference to radio communications. However, there is no guarantee that interference will not occur in a particular installation. If this equipment does cause harmful interference to radio or television reception, which can be determined by turning the equipment off and on, the user is encouraged to try to correct the interference by one or more of the following measures:

- Reorient or relocate the receiving antenna.
- Increase the separation between the equipment and receiver.
- Connect the equipment into an outlet on a circuit different from that to which the receiver is connected.
- Consult the dealer or an experienced radio/TV technician for help.

This equipment complies with FCC radiation exposure limits set forth for an uncontrolled environment. This equipment should be installed and operated with minimum distance 20cm between the radiator & your body.