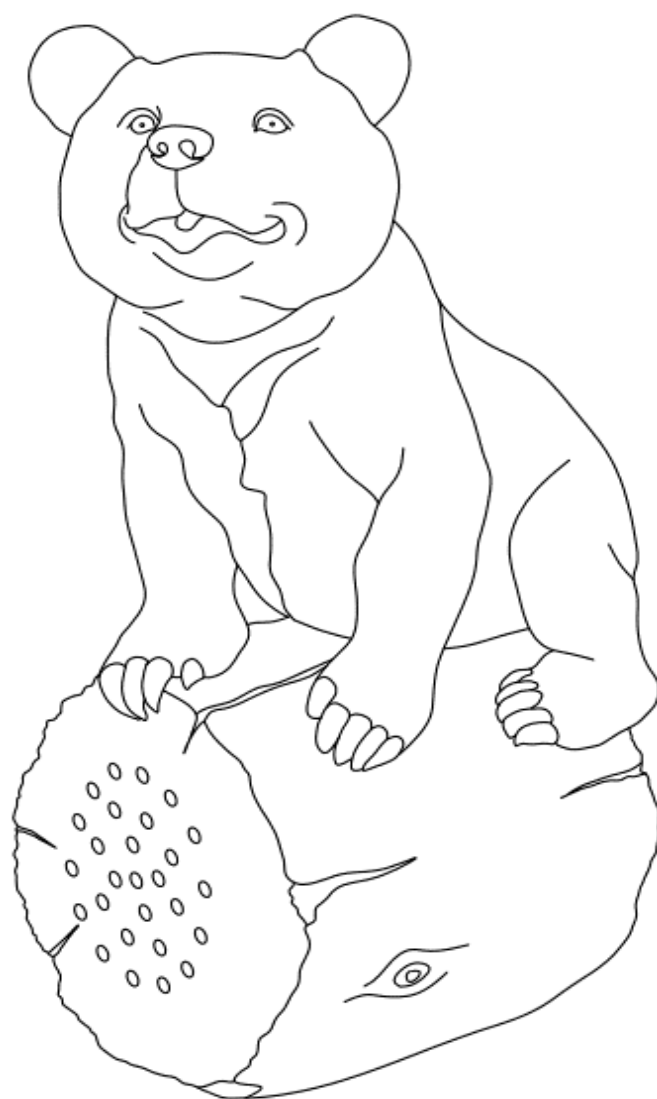


Owner's Manual

AXOSO[®]

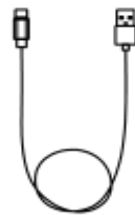
Black Bear Solar Bluetooth-Enabled Speaker NYYX22200



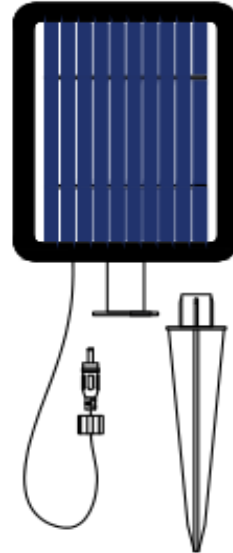
PARTS LIST



body with bluetooth speaker x1

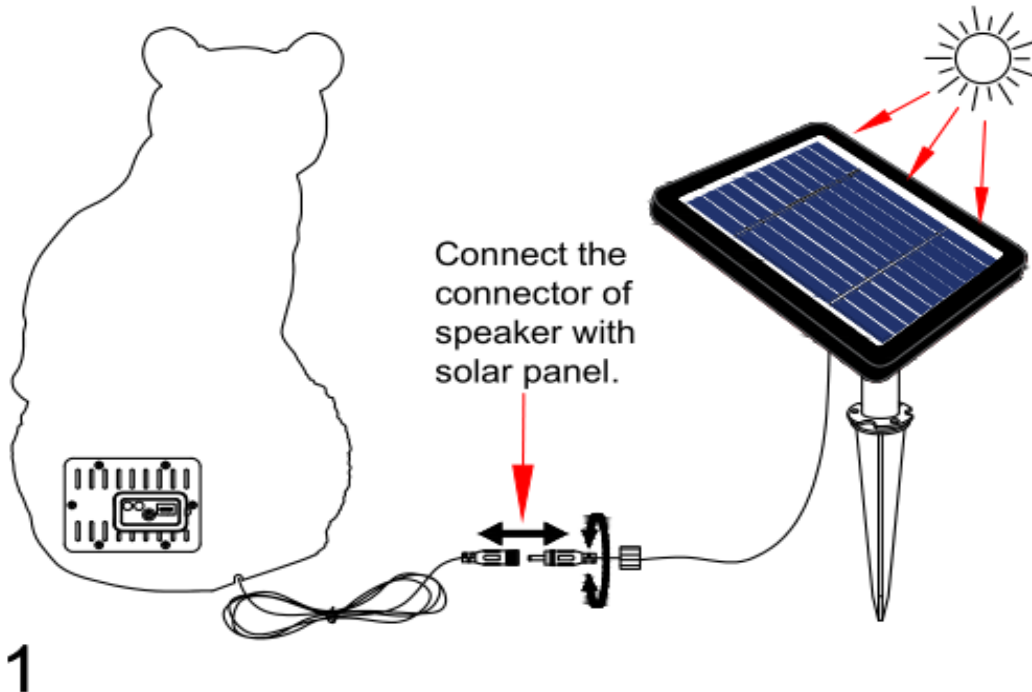


USB Charging Cable x1

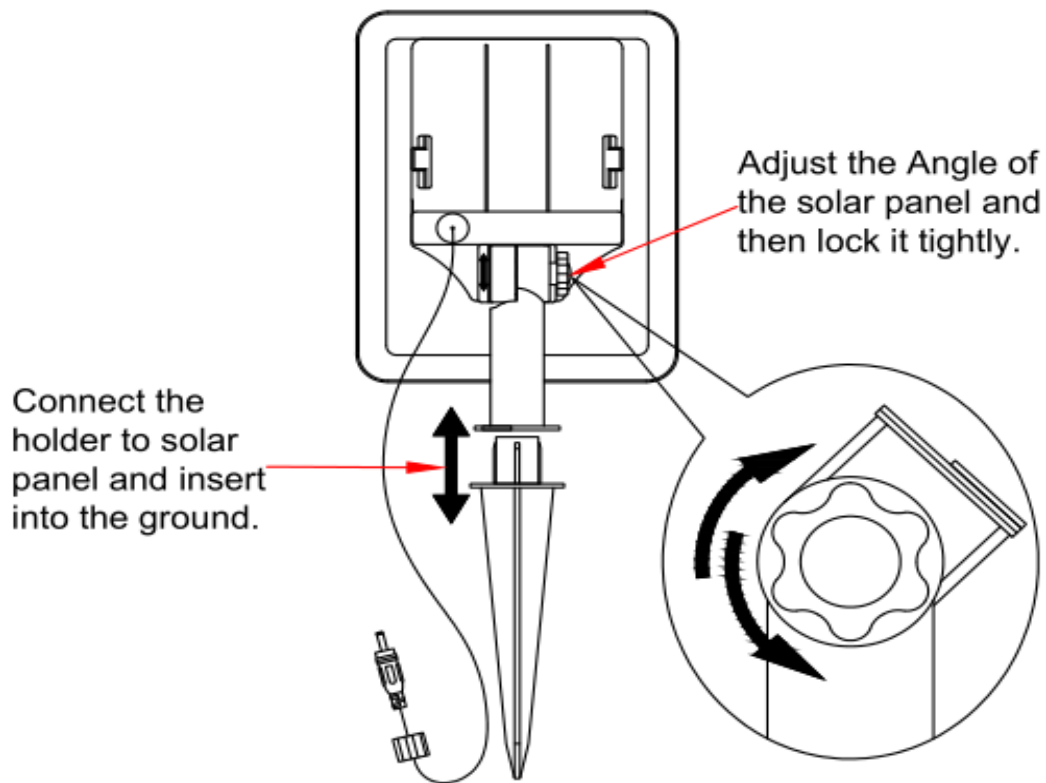


solar panel x1

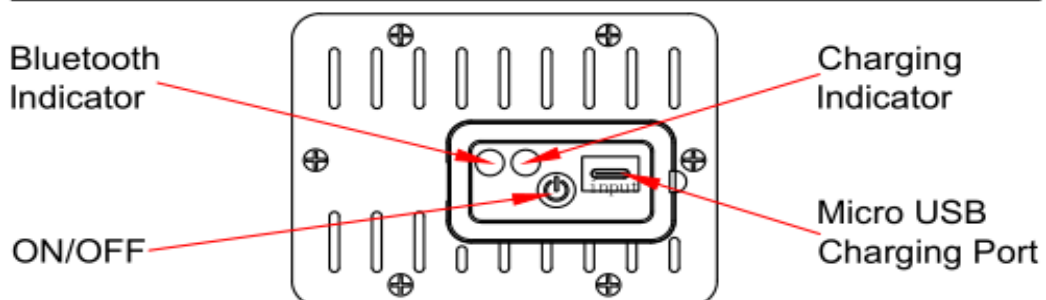
ASSEMBLY INSTRUCTIONS



SOLAR PANEL AND EXTERNAL STRUCTURE



BATTERY CASE



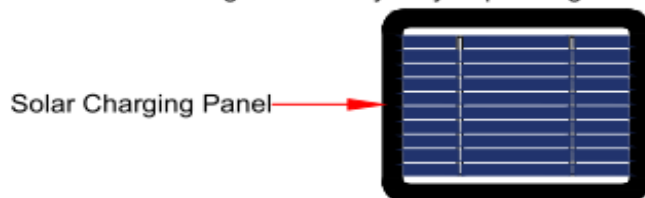
- *Push the power button on the back of the speaker to turn the speaker to ON or OFF.
- *When the speaker is charging the indicator light turns RED.
- *When the speaker is fully charged the indicator light turns GREEN.

CHARGING THE SPEAKER WITH THE SOLAR PANEL

The Solar and Bluetooth Speaker comes with a built-in rechargeable battery. Prior to using the speaker for the first time, it is recommended to charge the battery fully.

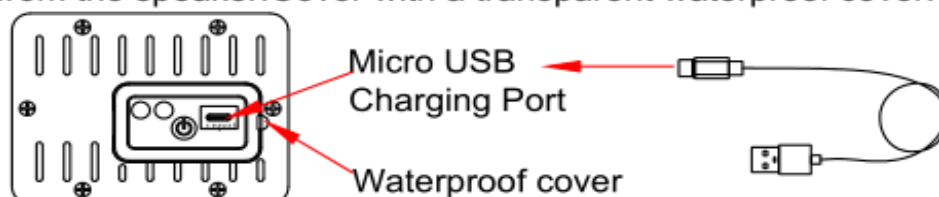
To charge the speaker, place the speaker under direct sunlight indoor light. Recommended charge time using the Solar Panel is 8 hours. It is important you charge the speaker for at least 8 hours before using it for the first time.

★ Charge times may vary depending on weather conditions.



CHARGING THE SPEAKER WITH A USB CABLE

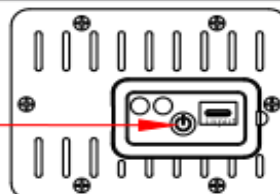
1. Pull back cover from the USB port. Plug the small end of the USB charging cable into the USB port on the back of the speaker.
2. Plug the large end of the USB charging cable into your computer or other USB charging device.
Recommended charge time with a USB cable is 2-3 hours.
3. When charging is complete, remove the USB charging cable from the speaker. Cover with a transparent waterproof cover.



BASIC OPERATION

3

Push the power button on the back of the speaker to turn the speaker to ON or OFF



PAIRING THE SPEAKER WITH A BLUETOOTH DEVICE

1. To pair the speaker with a Bluetooth-enabled device, press the ON/OFF button.
2. Listen for the connection tone. The Bluetooth indicator light will quickly flash BLUE.
3. Keep the speaker and Bluetooth-enabled device within three feet of each other during the pairing process. Set your Bluetooth-enabled device to search for Bluetooth devices.
4. If there are no paired devices in range when the speaker is turned on, it will go into pairing mode automatically. If a paired device is in range, the speaker will connect to it automatically.
 - * Pairing an ISO Phone/Device:
 - Go to settings > BLUETOOTH
(Make sure Bluetooth is ON)
 - * Pairing an Android Phone/Device:
 - Go to settings > Connections > Bluetooth
 - Search for devices (Make sure Bluetooth is ON)
 - * Pairing other Call Phone/Devices:
 - Review the instruction manual that came with your phone/device.
5. When the Bluetooth device finds the speaker, select **JX-Z02** from the list of discovered Bluetooth devices.
6. After a successful pairing, you will hear a tone.

Note : The bluetooth 5.0 works up to 66 ft.

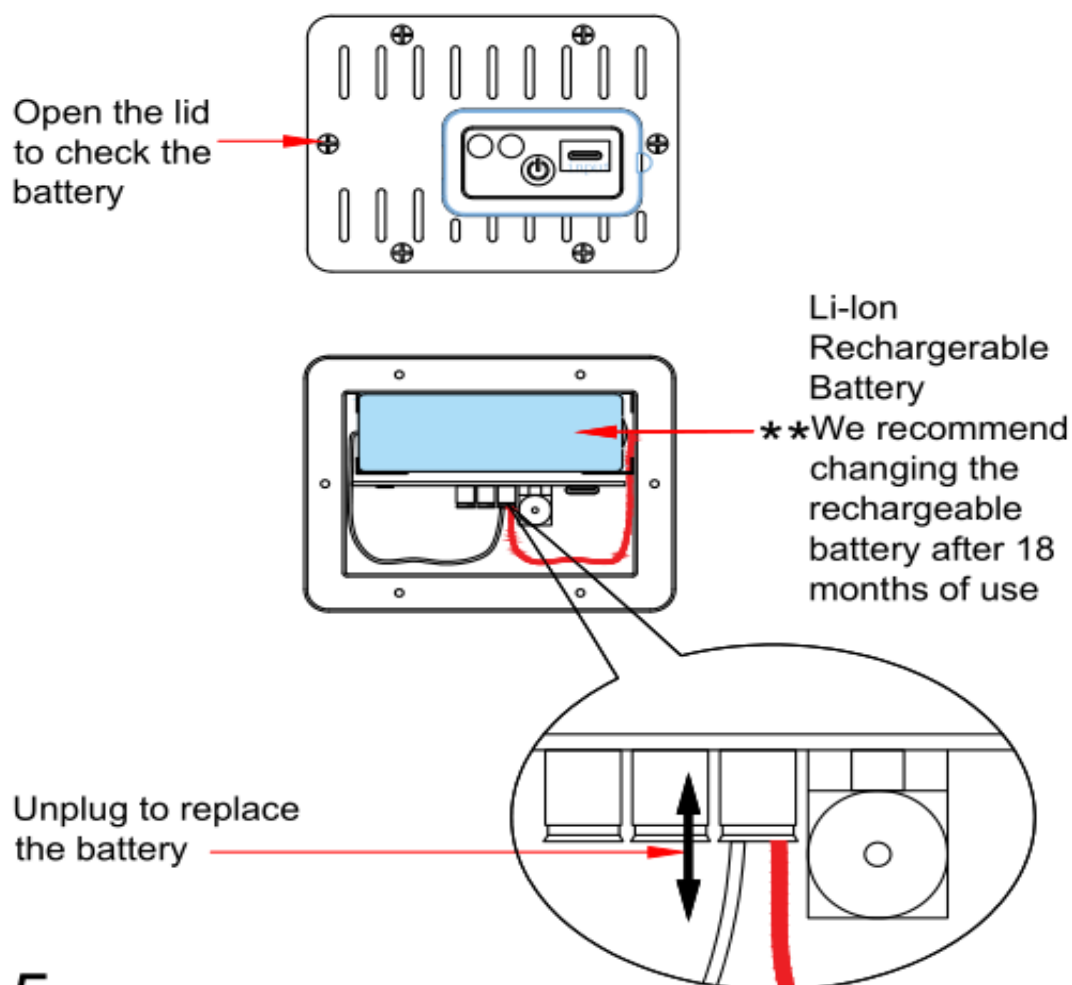
****** The Bluetooth devices can pair with our two speakers at the same time.

Notice : Before pairing the speaker with another device, unpair the speaker from the currently paired device . On your device's Bluetooth settings, select **JX-Z02** then select Forget This Device twice. When the speaker has been unpaired , it automatically goes into pairing mode again.

PLAYING MUSIC

To enjoy wireless music on your Bluetooth speaker, make sure that you are connected to a Bluetooth-enabled device. Open your media player and press PLAY. Once playback begins, you can control the music and volume from your connected device. Playback time on the built-in battery is approximately 12 hours, depending on music level and other factors.

REPLACEMENT PART



FCC Warning

This device complies with Part 15 of the FCC Rules.

Operation is subject to the following two conditions: (1) This device may not cause harmful interference, and (2) this device must accept any interference received, including interference that may cause undesired operation.

Changes or modifications not expressly approved by the party responsible for compliance could void the user's authority to operate the equipment.

NOTE: This equipment has been tested and found to comply with the limits for a Class B digital device, pursuant to Part 15 of the FCC Rules. These limits are designed to provide reasonable protection against harmful interference in a residential installation. This equipment generates, uses, and can radiate radio frequency energy and, if not installed and used in accordance with the instructions, may cause harmful interference to radio communications. However, there is no guarantee that interference will not occur in a particular installation. If this equipment does cause harmful interference to radio or television reception, which can be determined by turning the equipment off and on, the user is encouraged to try to correct the interference by one or more of the following measures:

- Reorient or relocate the receiving antenna.
- Increase the separation between the equipment and receiver.
- Connect the equipment into an outlet on a circuit different from that to which the receiver is connected.
- Consult the dealer or an experienced radio/TV technician for help.

RF Exposure Information

This equipment complies with FCC radiation exposure limits set forth for an uncontrolled environment. This equipment should be installed and operated with minimum distance 20cm between the radiator and your body.

Maintain

Dirts can build up on this solar speaker over time,pls use the wet soft cloth to clean it.

LIMITED WARRANTY INFORMATION

Item is covered under one year limited warranty from the date of purchase.

Not Covered Under Warranty

The limited warranty will NOT cover cases of damages due to:

1. Inadequate care and/or neglect
2. Environmental and/or natural elements
3. Immersion in water, unless specified
4. Improper Installation/Storage and/or Maintena

CUSTOMER SERVICE

For any additional questions or concerns please contact our Customer Service:

E-mail: zhuoge@vip.163.com

AXOSO[®]