

miady

5000mAh Magnetic Power Bank

Model: M2259Q

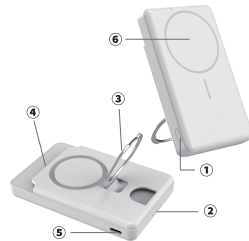
User Manual

Please read this manual before using the product and keep it for future reference.



Warning

- Read all safety information below and operating instructions before using this power bank to avoid injury and damage to your device.
- We assume no responsibility for the damage to the charged devices due to improper operation to this power bank.



- ① Anti-Lost ON/OFF Button ② LED Indicator ③ Foldable Stand
④ Card Holder ⑤ Type-C Output/Input ⑥ Magnetic Charging

LED ON	0000	000	00	0
Power Percentage	100%	75%	50%	25%



Package Content

- Miady 5000mAh Wireless Portable Charger * 1
- USB-C to USB-C Cord * 1
- User Manual * 1



Specification

Weight	144,5g/5,10oz
Size	101,97 x 68,37x 15,80mm/4,01x2,69x0,62inches
Capacity	5000mAh/3,85V/19,25Wh
Type C Input	5V3A/9V2A/12V1,5A (Max,18W)
Type C Output	5V3A/9V2,2A/12V1,67A (Max,20W)
Wireless Output	5W/7,5W/10W/15W



Instructions

1.Anti-Lost Air Tracker Tags

- **Power On:**
Press and hold the "On/Off" button of your power bank for about 2 seconds until you hear a "beep." This means the device is now on.

2. Card Holder

- The foldable stand includes a slot that can hold up to two cards.

3. Charging the Portable Charger

- Use a certified AC adapter and the included Type-C charging cable to charge the portable charger.
- While charging, the LED indicator will flash white. Once fully charged, the indicator will stop flashing, and all four white LED lights will remain on.
- The charger supports pass-through charging, allowing you to wirelessly charge your phone while recharging the portable charger via the Type-C port.

4. Charging Devices with a Type-C Cable

- Connect your device using the Type-C cable. The four white LED lights will illuminate when the device is connected. Each light represents approximately 25% of the battery power; as power is consumed, the lights will turn off one by one.

5. Wireless Charging

- The wireless charging feature activates automatically. Place a wireless charging-enabled device on the charging pad. The first LED will light green, and the four white LEDs will indicate battery levels. For optimal charging, remove your phone case.
- For iPhone 12 series and newer models with built-in magnets, the device will align and attach to the magnetic ring for efficient wireless charging.
- Once your device is fully charged, remove it from the power bank. Double-tap the power button to turn off the charger.



FAQ

Q:Can I charge other devices while charging the battery pack?

A: Yes, it supports pass-through charging.

Q:Will it easily detach from the phone?

A:No, the strong magnetic charging pad ensures it stays firmly attached, especially when using a magnetic phone case or no case at all.

Q:Does it only support iPhone 12/13/14/15/16 series? Can it charge other phones?

A:Magnetic wireless charging works with iPhone 12 series and newer. Other phones can be charged using a data cable.

Q:Why does the charging speed slow down or stop before fully charging my phone?

A: This might be due to the "Optimized Battery Charging" or "80% Limit" settings. You can turn it off by going to Settings > Battery > Charging Optimization and selecting "NONE."

Q:Will wireless charging work with a phone case?

A:For best results, remove your phone case or use Apple's official magnetic cases. Avoid cases thicker than 2,5mm or those made of metal."

Q:Why does the battery get warm while charging or discharging?

A: It's normal for wireless charging to generate some heat. The product meet international safety standards to ensure safe usage.



Warranty

- Miady magnetic portable chargers come with an 18-month limited warranty from the original purchase date. If you encounter any issues, please contact our support team.If you have any more questions or need further assistance, feel free to ask.

Model: M2259Q

FCC Warning Statement: Changes or modifications to this unit not expressly approved by the party responsible for compliance could void the user ' s authority to operate the equipment. This equipment has been tested and found to comply with the limits for a Class B digital device, pursuant to Part 15 of the FCC Rules. These limits are designed to provide reasonable protection against harmful interference in a residential installation. This equipment generates, uses and can radiate radio frequency energy and, if not installed and used in accordance with the instructions, may cause harmful interference to radio communications. However, there is no guarantee that interference will not occur in a particular installation. If this equipment does cause harmful interference to radio or television reception, which can be determined by turning the equipment off and on, the user is encouraged to try to correct the interference by one or more of the following measures:

- Reorient or relocate the receiving antenna.
- Increase the separation between the equipment and receiver.
- Connect the equipment into an outlet on a circuit different from that to which the receiver is connected.
- Consult the dealer or an experienced radio/TV technician for help.

This device complies with Part 15 of the FCC Rules. Operation is subject to the following two conditions: (1) this device may not cause harmful interference, and (2) this device must accept any interference received, including interference that may cause undesired operation.

FCC Radiation Exposure Statement

The device has been evaluated to meet general RF exposure requirement. The device can be used in portable exposure condition without restriction.