



***Congratulations on
purchasing our Backup Camera System!***



IN NO EVENT SHALL SELLER OR MANUFACTURER BE LIABLE FOR ANY DIRECT OR CONSEQUENTIAL DAMAGES OF ANY NATURE, OR LOSSES OR EXPENSES RESULTING FROM ANY DEFECTIVE PRODUCT OR THE USE OF ANY PRODUCT.



We recommend doing a benchmark test before installation to ensure that all components are working properly.

USER MANUAL

Digital Wireless Camera System SPLIT VIEW FOR (2) CAMERA

Normally you do not need to pair the camera and monitor, we defaulted and paired them well to the first channel before delivery. What you need to do are as follow:

1. Find out the installation place of the camera and the power of reversing light(or ACC).
2. Install the monitor to a suitable place and connect it to the cigarette lighter.

Package contents

- ▶ Wireless camera x 1
- ▶ 5" wireless monitor x 1
- ▶ Mount Bracket x 1
- ▶ Antenna x 2
- ▶ Screw Kit for Camera Installation x 1
- ▶ Camera Power Cable x 1

Installation

- Electric shock or product malfunction may occur if this product is installed incorrectly.
- Use this product within the voltage range specified. Failure to do so can cause electronic shock or product malfunction.
- Take special care when cleaning the monitor, no wet hands touch during installation.
- Make sure to firmly affix the product before use.
- If smoke or a burning smell is detected, disconnect the system immediately.
- Where the power cable may touch a metal case, cover the cable with friction tape.
A short circuit or disconnected wire may cause a fire.
- While installing the System be careful with the wire positioning in order to avoid wire damage.
- Do not watch movies or operate the monitor while driving; as it may cause an accident.
- Do not install the monitor where it may obstruct drivers view or obstruct an air bag device.
- Dropping the unit may cause possible mechanical failure.
- Do not hard press on the camera lens.
- Do not crush or damage the power cable.
- Do not use the device during a lightning storm.

Operating Precautions

1. The device may be powered by a 12/32 volt battery or the vehicle's electrical system.
2. Make sure all cables are connected properly. Improper cable connections may damage the monitor. Remove the power cable connections when not using the device.

FAQ

1. Is the signal between the camera and the receiver encrypted?

Yes.

2. How many cameras does the system support?

2 cameras.

3. Why does the frame rate sometimes drop when I am driving?

When driving the signal reception might drop sometimes. This occurs as the signal to the receiver is constantly transmitted from different angles. This is considered normal when transmitting wirelessly.

4. Is the camera water resistant?

The camera is Ip69k classed. This means that the camera is well protected from both dust and humidity. It can be placed outside and can be cleaned using a pressure washer.

5. Can I hear sound from the camera?

No, the camera does not have a microphone.

6. I am using the camera for reversing, how do I mirror the image?

Please see the instructions in the "Operation" section.

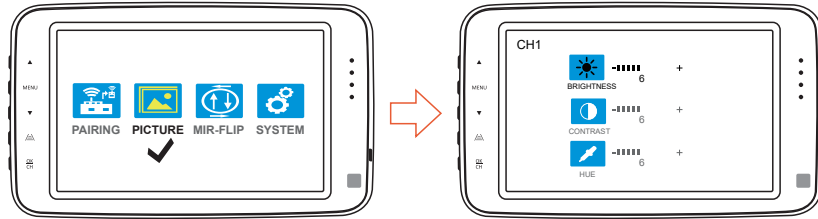
7. What do I do if I have bad reception on the LCD-monitor?

Start by reading through the troubleshooting. If troubleshooting doesn't help, welcome to contact us:

8. Will the camera break at very low temperatures?

No, at very low temperatures the picture might turn red. At extremely low temperatures the camera might turn off. However, when the temperature gets higher again the camera will regain its functionality.

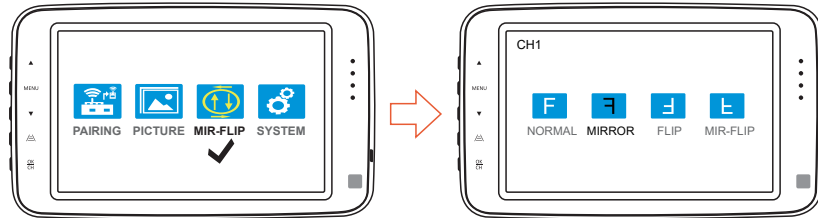
Picture-Image Settings



The image can be modified to the driver's specifications. Easily adjust the Brightness, Contrast, and Color to create the optimal brightness.

- 1) Press "Menu"
- 2) Press "▲/▼" & "OK" to Select "Picture"
- 3) Press "OK" & "▲/▼" to adjust picture image settings

Mir-flip Screen Rotation Settings



Rotation Options (Vertical + Horizontal) There are many advantages to rotating a screen vertically or horizontally. Different views include :

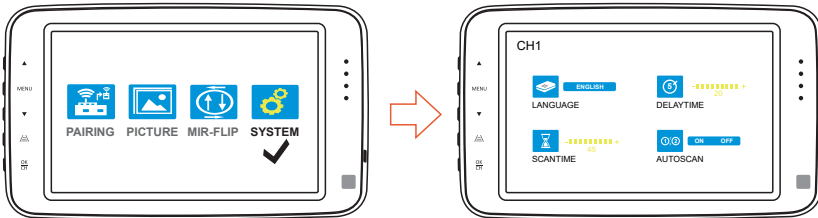
Normal → Standard Display → Display in classic view

Mirror → Horizontal Reverse → Display flipped horizontally

Flip → Vertical Reverse → Display flipped vertically

Mir → Flip Hand V Revers → Display flipped vertically + horizontally

System - Settings



1. Press "Menu", Choose "SYSTEM"
Press "OK"
2. Press "▲", "▼" to adjust
3. Press "OK" to select

Language: Language Selection

Delaytime: Interval Time when reversing camera displays

Scantime: Interval time when autoscan is on

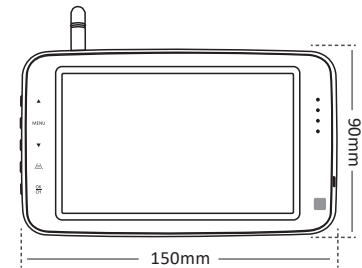
Autoscan: Auto displays CH1 & CH2 on/off

Autoscan means system displays CH1 & CH2 by turns

Technical Specification

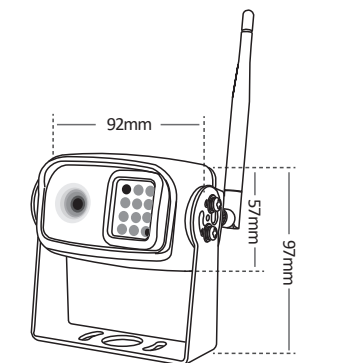
Monitor

- Monitor Panel Size 5" LED Digital Panel
- Video System PAL/NTSC auto
- Resolution 800 x 3(RGB) x 480
- Brightness 500cd/m²
- Contrast Ratio 500:1
- Screen Mode 16:9
- Field of View Top: 50°, Bottom 70°, L/R 70°
- Audio NO
- Dot Pitch 0.077(W) x 0.231(H)mm
- Active Area 110.000(W) x 62.832(H)mm
- Power Input DC 10V-32V
- Operating Temperature -4F to approx. 176F
- Frequency 2400-2483.5 MHz
- Transmission Type Digital Wireless
- Video Input 2 Channel
- Video Source 1vp-p75Ω
- Pairing CH1 Camera Paired
- Power Consumption About 4W
- Transmission Distance 328 ft
- Display Mode Single / Autoscan / Split View

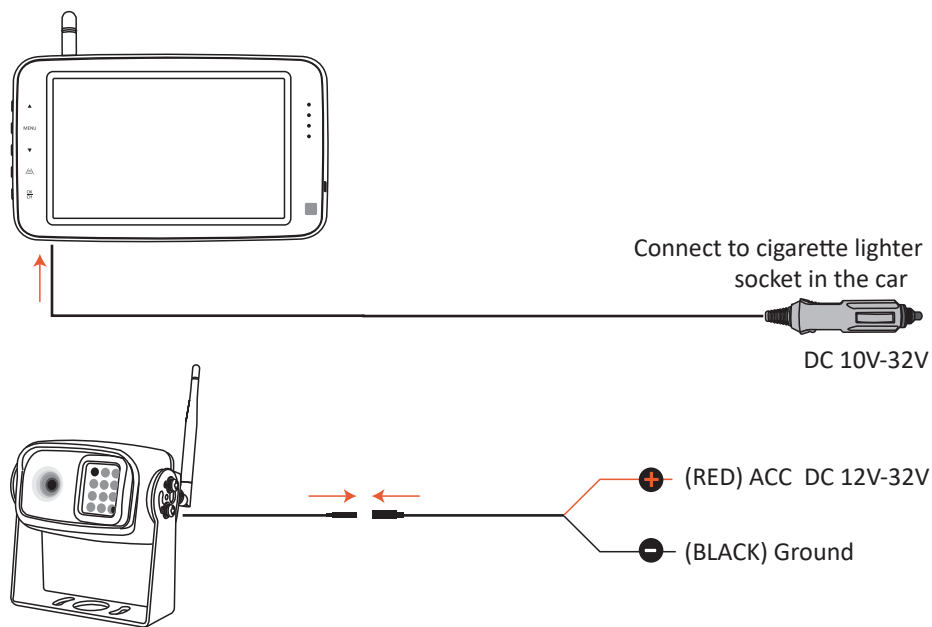


Camera

- Sensor 1/3' CCD
- Effective Pixel Array 512x492
- Sync. System 700 TV LINES
- Minumination 0.1 LUX
- Working Current 260mA
- Optical Format 1/3 inch
- Camera Correction R-0.45-1.0
- Lens F=3.6 mm
- Viewing Angle 110°
- Waterproof Rating IP69K
- Power Consumption About 3.5W (IR on)
- Power Input DC12 -32V
- Operating Temperature -4F to approx. 176F
- Frequency 2400-2483.5 MHz
- Transmission Type Digital Wireless
- Transmission Distance 328 ft
- S/N Ratio More than 48dB
- White Balance Auto
- IR Control Auto



Wiring The System

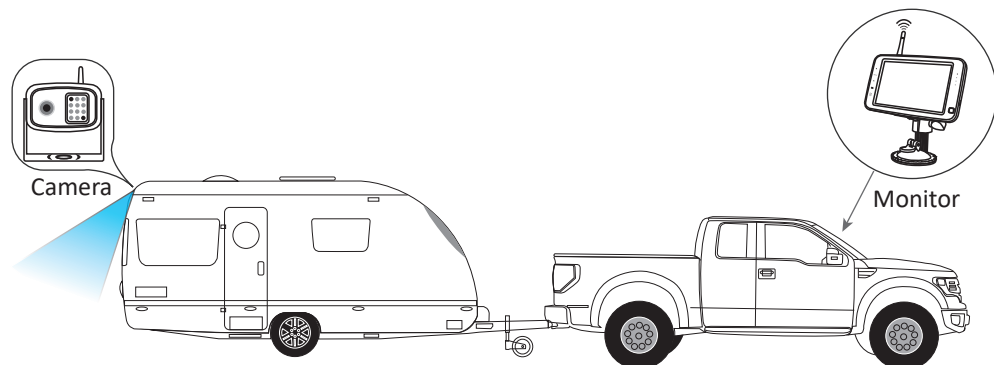


CAMERA CONNECTION: Locate the clearance lights wiring on your vehicle. You may need to remove the interior panel in order to locate. Connect the power cables for camera: Red wire to light's positive; Black wire to chassis ground.

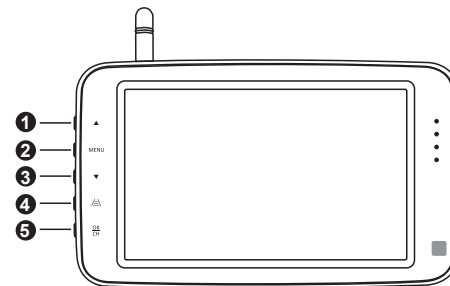
MONITOR CONNECTION: Cigarette lighter adapter: firmly insert the lighter plug to the cigarette lighter socket.

DO NOT INSTALL monitor where it may obstruct driver view or obstruct air bag devices.

Position



Monitor Operation

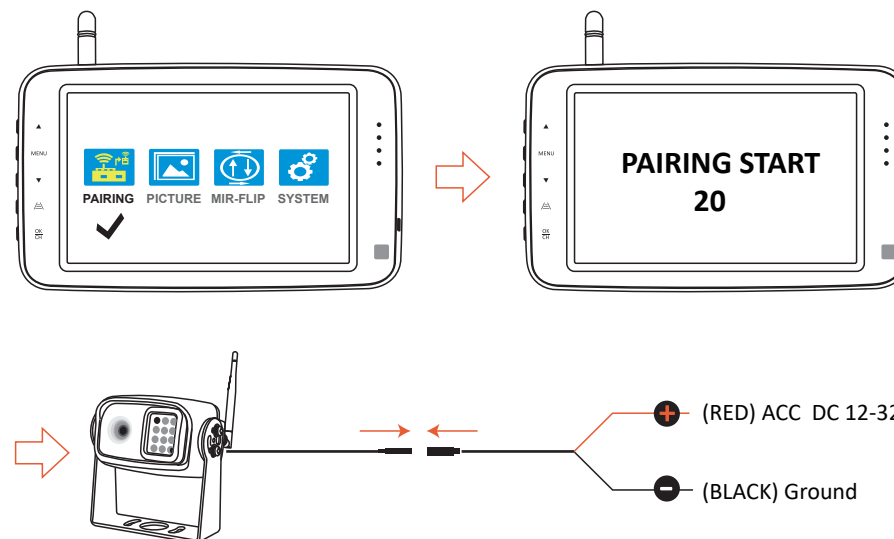


- 1 UP Arrow
- 2 Menu / Selection button
- 3 Down arrow
- 4 Parking Line on/off and Adjust Parking Line Position
- 5 Confirm / CH Selection

Main Menu

Pairing

System has been paired, connect power and it works. Use pairing unless you need to add more cameras or replace a camera.



Camera Pairing:

1. Un-plug camera's power connection
2. Keep monitor is power connected
3. Press monitor button " Menu", press "▲" or "▼" scroll to Pairing
4. Press "OK", monitor appears countdown 20 seconds
5. Connect camera to its power source
6. Camera signal appears on monitor

Note: no need to press any button on camera

FCC Caution.

§ 15.19 Labelling requirements.

This device complies with part 15 of the FCC Rules. Operation is subject to the following two conditions: (1) This device may not cause harmful interference, and (2) this device must accept any interference received, including interference that may cause undesired operation.

§ 15.21 Information to user.

Any Changes or modifications not expressly approved by the party responsible for compliance could void the user's authority to operate the equipment.

§ 15.105 Information to the user.

Note: This equipment has been tested and found to comply with the limits for a Class B digital device, pursuant to part 15 of the FCC Rules. These limits are designed to provide reasonable protection against harmful interference in a residential installation. This equipment generates uses and can radiate radio frequency energy and, if not installed and used in accordance with the instructions, may cause harmful interference to radio communications. However, there is no guarantee that interference will not occur in a particular installation. If this equipment does cause harmful interference to radio or television reception, which can be determined by turning the equipment off and on, the user is encouraged to try to correct the interference by one or more of the following measures:

- Reorient or relocate the receiving antenna.
- Increase the separation between the equipment and receiver.
- Connect the equipment into an outlet on a circuit different from that to which the receiver is connected.
- Consult the dealer or an experienced radio/TV technician for help.

RF warning for Mobile device:

This equipment complies with FCC radiation exposure limits set forth for an uncontrolled environment. This equipment should be installed and operated with minimum distance 20cm between the radiator & your body.
