

ULTIMEA

Dolby Atmos

HDMI™

Bluetooth®



User Manual

Poseidon D80

EN: User Manual

DE: Benutzerhandbuch

JP: ユーザーマニュアル

FR: Manuel de l'utilisateur

IT: Manuale d'uso

ES: Manual del usuario

Model No.: U2620

Poseidon D80 7.1 Channel Dolby Atmos Soundbar

Contents

03	User Manual	English
	Connection and Installation	05
09	Benutzerhandbuch	Deutsch
	Anschluss und Installation	11
15	ユーザーマニュアル	日本語
	接続と設置	17
21	Mode d'Emploi	Français
	Raccordement et installation	23
27	Manuale d'uso	Italiano
	Connessione e installazione	29
33	Manual del usuario	Español
	Conexión e instalación	35

User Manual



Model No.: U2620

WE ARE READY TO HELP



support@ultimea.com
support.ultimea.com

Scan code to download app

You can also search for "ULTIMEA" on Google Play or Apple Store to download the app.

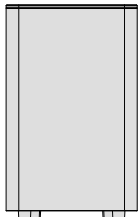


@ultimea_official

+1 888-598-8875 (US) Mon-Fri 9am-5pm (PST)
+49 89-628-25828 (EU) Mon-Fri 9am-5pm (CET)



1 ACCESSORIES LIST



Subwoofer



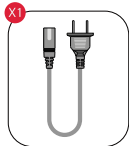
Soundbar



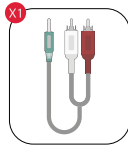
Surround Speaker × 4



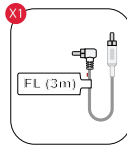
Power Adaptor



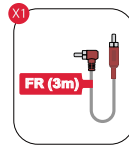
Subwoofer Power Cable



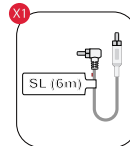
Stereo 3.5mm to RCA Audio Cable



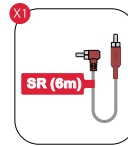
Front Left Surround Cable (3m)



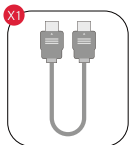
Front Right Surround Cable (3m)



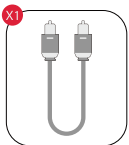
Rear Left Surround Cable (6m)



Rear Right Surround Cable (6m)



HDMI Cable



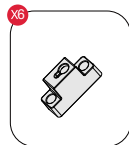
Digital Optical Cable



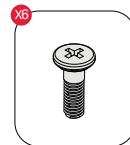
Remote Control



Wall Mounted Kit



Wall Bracket

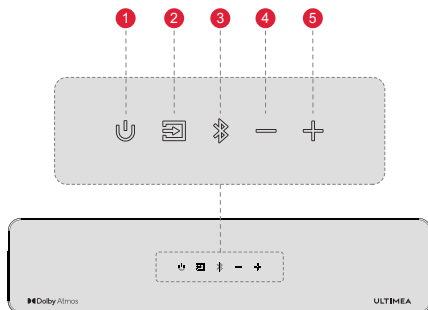


Mounting Screw on Speakers



User Manual

2 SOUNDBAR CONTROLS

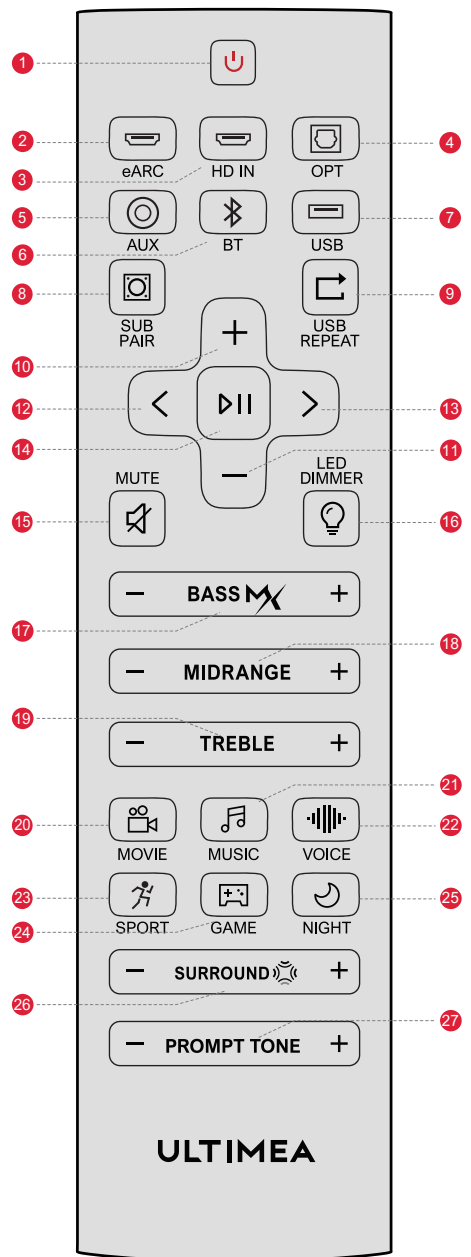


Control Panel

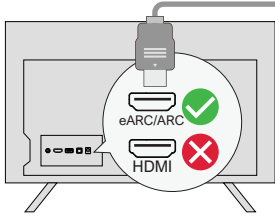
- 1 **“⏻”**: **Power Button**
Press to power on / off.
- 2 **“📺”**: **Source**
Press to switch channels: eARC-HD IN(HDMI IN)-OPT (OPTICAL)-BT-AUX-USB.
- 3 **“📶”**: **Bluetooth**
Press to switch to BT channel and enter pairing mode. Hold for 3 seconds to disconnect current device and choose to connect to a new device manually on your mobile phone / PC / TV (BT ID: Poseidon D80).
- 4 **“-”**: **Volume Down**
- 5 **“+”**: **Volume Up**

Remote Control

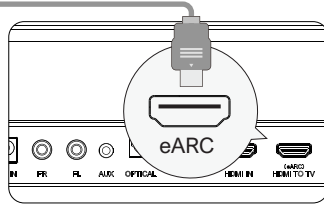
- 1 "U": **Power Button**
Press to power on / off.
- 2 "eARC": **eARC**
Press to switch to HDMI eARC channel.
- 3 "HD IN": **HD IN**
Press to switch to HDMI IN channel.
- 4 "OPT": **OPT**
Press to switch to OPTICAL channel.
- 5 "AUX": **AUX**
Press to switch to AUX channel.
- 6 "BT": **BT**
Press to switch to BLUETOOTH channel.
- 7 "USB": **USB**
Press to switch to USB channel.
- 8 "SUB PAIR": **SUB PAIR**
Press and hold the button for 3 seconds to put the Soundbar in a state ready to pair with the subwoofer.
- 9 "USB REPEAT": **USB REPEAT**
USB Mode: Press to switch between single loop playback and list loop playback.
- 10 "+": **Volume Up**
- 11 "-": **Volume Down**
- 12 "<": **Previous**
For BT and USB mode only: Skip to previous track.
- 13 ">": **Next**
For BT and USB mode only: Skip to next track.
- 14 "Play / Pause": **Play / Pause**
For BT and USB mode only.
- 15 "MUTE": **MUTE**
- 16 "LED DIMMER": **LED DIMMER**
Press to adjust display brightness in 5 levels. Press and hold for 3s to turn off the LED display.
- 17 "BASS MAX": **BASSMAX**
Press to adjust bass level, the display will show: "BS-6", "BS-5", "BS-4", "BS-3", "BS-2", "BS-1", "BS 0", "BS 1", "BS 2", "BS 3", "BS 4", "BS 5", "BS 6".
- 18 "MIDRANGE": **MIDRANGE**
Press to adjust alto level, the display will show: "MR-6", "MR-5", "MR-4", "MR-3", "MR-2", "MR-1", "MR 0", "MR 1", "MR 2", "MR 3", "MR 4", "MR 5", "MR 6".
- 19 "TREBLE": **TREBLE**
Press to adjust treble level, the display will show: "TB-6", "TB-5", "TB-4", "TB-3", "TB-2", "TB-1", "TB 0", "TB 1", "TB 2", "TB 3", "TB 4", "TB 5", "TB 6".
- 20 "MOVIE": **MOVIE**
Press to switch to MOVIE mode, the display will show: "MOVI".
- 21 "MUSIC": **MUSIC**
Press to switch to MUSIC mode, the display will show: "MUSC".
- 22 "VOICE": **VOICE**
Press to switch to VOICE mode, the display will show: "VOIC".
- 23 "SPORT": **SPORT**
Press to switch to SPORT mode, the display will show: "SPRT".
- 24 "GAME": **GAME**
Press to switch to GAME mode, the display will show: "GAME".
- 25 "NIGHT": **NIGHT**
Press to switch to NIGHT mode, the display will show: "NIGT".
- 26 "SURROUND": **SURROUND**
Press to adjust surround sound level, the display will show: "SR-6", "SR-5", "SR-4", "SR-3", "SR-2", "SR-1", "SR 0", "SR 1", "SR 2", "SR 3", "SR 4", "SR 5", "SR 6".
- 27 "PROMPT TONE": **PROMPT TONE**
Press to adjust prompt tone level, the display will show: "PT 0", "PT 1", "PT 2", "PT 3".



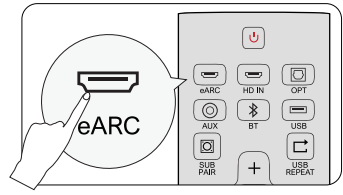
3 CONNECT TO TV VIA HDMI eARC / ARC



Steps 1:
Connect one end of the HDMI cable to the eARC / ARC port your TV.



Steps 2:
Then connect the other end to the eARC port of the soundbar.



Steps 3:
Press "eARC" button on the remote control to select "eARC" input.

Note:

Make sure your TV HDMI supports eARC, otherwise the Dolby Atmos audio signal cannot be transmitted.

Atmos: If you are watching a movie in the Dolby Atmos format, please set the audio output on your TV to Pass Through:
TV Settings > Home > Settings > Sound > Digital Audio Output > Pass Through

DTS: If you are watching a movie in the DTS format, please set the audio output on your TV to PCM:
TV Settings > Home > Settings > Sound > Digital Audio Output > PCM

What's the difference between: HDMI IN, HDMI ARC, HDMI eARC?

HDMI IN is a standard HDMI input that allows you to connect devices to your TV or audio system. It supports audio and video signals, but it does not support audio return channel (ARC) or enhanced audio return channel (eARC) functionality.

HDMI ARC is a special HDMI port that supports two-way communication between your TV and audio system. This means that audio can be sent from your TV to your audio system, and audio system can send audio back to your TV.

HDMI eARC (Enhanced Audio Return Channel) is an updated version of HDMI ARC that supports higher quality audio formats such as Dolby Atmos and DTS:X.

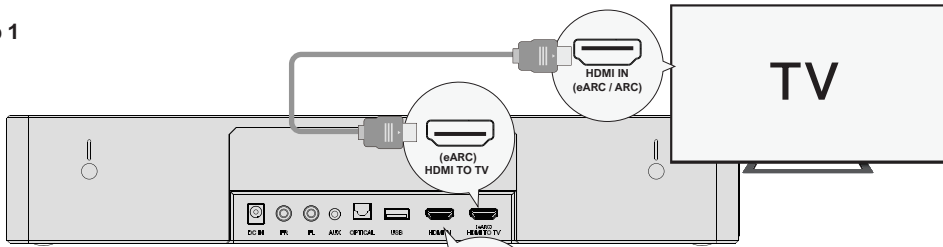
Note: Please turn on the "CEC" function on your TV.

When eARC / ARC is connected, your TV remote control can control the soundbar and TV simultaneously:

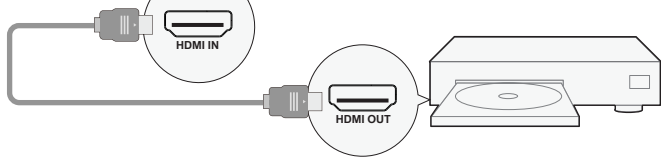
- ① Turn on / off
- ② Adjust the volume

4 CONNECT TO OTHER DEVICE VIA HDMI IN

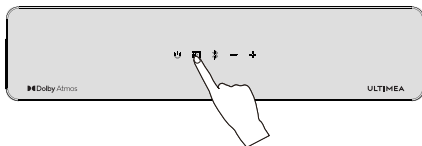
Step 1



Step 2



Step 3



Step 1: Connect the HDMI Cable to the HDMI OUT (eARC) port on the Soundbar and the other end to the eARC / ARC port on the TV.

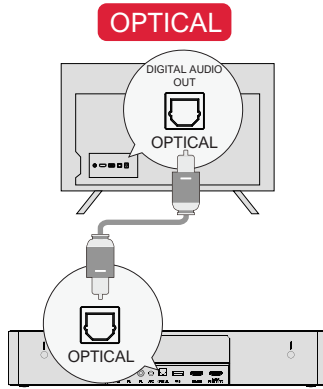
Step 2: Connect the HDMI cable to the HDMI OUT port on the other device (Such as DVD or game console) and the other end to HDMI IN port on the Soundbar.

Step 3: Press "HDMI IN" button on Soundbar or Remote Control to switch to HDMI IN channel.

Note: Your TV HDMI needs to support eARC to transmit the Dolby Atmos audio format to your Soundbar.

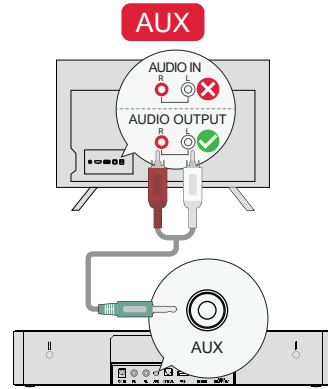
5 CONNECT TO TV VIA OPTICAL / AUX

EN



OPTION 1: OPTICAL

- 1 Make sure the TV's port is OPTICAL OUT, connect both sides of the cable to OPTICAL, for both the TV and the soundbar.
 - 2 Make sure the optical plug is inserted correctly as it shows in the picture. Do not insert the plug upside down and break the optical.
- Note:** If audio is playing from the internal TV speakers, mute or minimize the TV volume.



OPTION 2: AUX

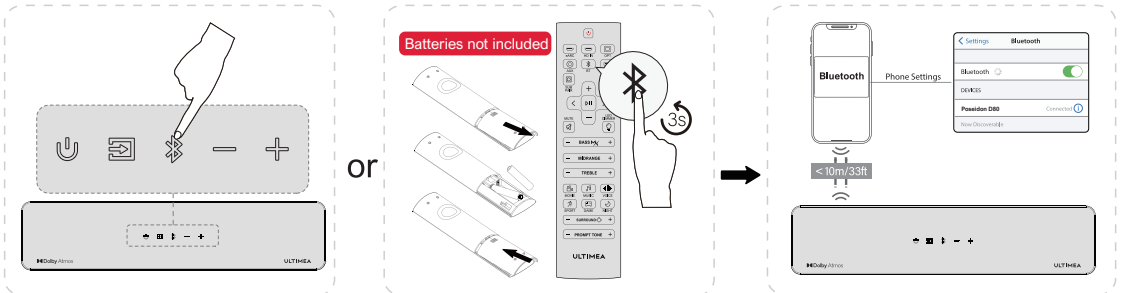
- 1 Connect the 3.5mm to RCA audio cable to connect to your TV's RCA AUDIO OUT port.
 - 2 Make sure the color of the cables ends matches the color of the TV ports.
- Note:** Please remember to unplug the AUX cable from TV and Soundbar when you want to switch other mode.

In Optical Mode: If there is no sound, try setting the TV audio output to PCM: TV Settings > Home > Settings > Sound > Digital Audio Output > PCM

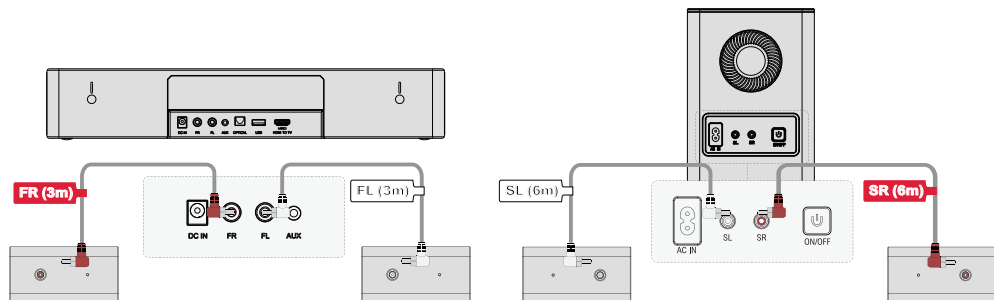
6 CONNECT TO BLUETOOTH®

- 1 Press the "Bluetooth" button on the soundbar or remote control to enter Bluetooth pairing mode.
- 2 Open your phone's Bluetooth settings, find and select "Poseidon D80" to connect the soundbar.

Note: If it's already in the Bluetooth mode and connected, press and hold "Bluetooth" button for 3 seconds to disconnect the current device and connect to new device manually on your mobile phone / PC / TV.



7 CONNECT TO SUBWOOFER AND SURROUND SPEAKERS



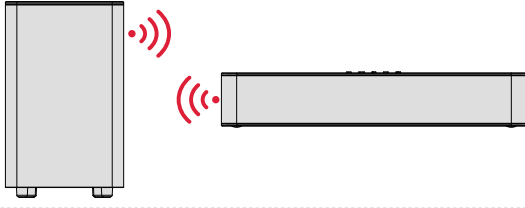
- 1 Use the Front Surround Cables (FL & FR) to connect the soundbar and surround speakers, please pay attention to match the same color interfaces on the surround speakers with the corresponding ones on the soundbar and place the surround speakers accordingly.

- 2 Use the Rear Surround Cables (SL & SR) to connect the subwoofer and surround speakers, please pay attention to match the same color interfaces on the surround speakers with the corresponding ones on the subwoofer and place the surround speakers accordingly.

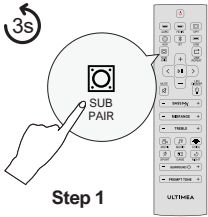
Note: After connecting the surround speakers in the manner described above, when facing the front of the soundbar, the two surround satellite speakers on the right side will have red interfaces, while the two surround satellite speakers on the left side will have white interfaces. Please ensure that they are positioned accordingly to ensure an optimal audio experience.

8 PAIRING SUBWOOFER

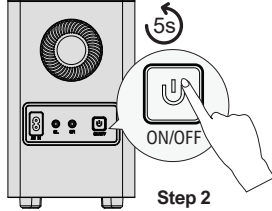
EN



The subwoofer has been paired with the soundbar by factory.
If there is no sound coming from the subwoofer, you need to re-pair the soundbar with the subwoofer.



Step 1



Step 2

Step 1:

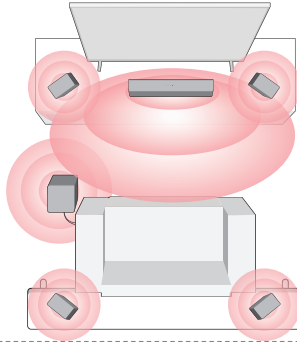
Press and hold the "SUB PAIR" button on the remote control for 3 seconds, the display will show "SUB" flashing.

Step 2:

Press and hold the ON / OFF button on subwoofer for 5 seconds, the white LED will be fast flashing.
The white LED will be always on when the subwoofer is paired successfully.

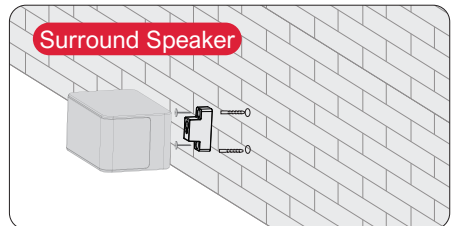
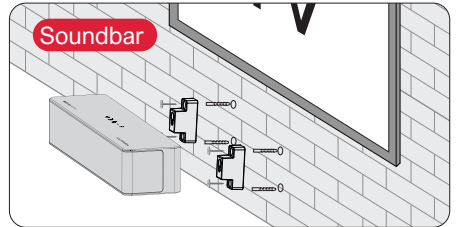
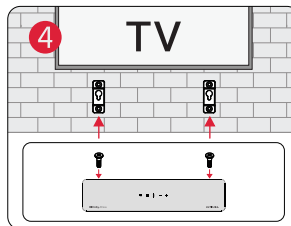
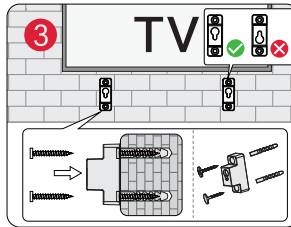
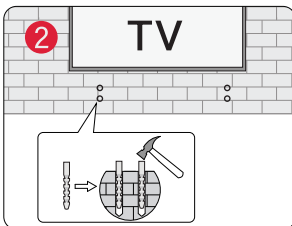
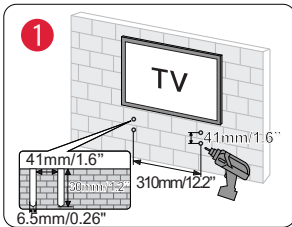
9 PLACEMENT RECOMMENDATION

Full 360° Surround



For a better listening experience, lay out the entire system as shown in the picture above.

10 WALL MOUNT INSTALLATION



Note: The wall mount bracket used for the surround speakers is identical to that of the sound speaker, so the vertical hole spacing is the same as that of the sound bar, and the installation method is also the same.

11 SPECIFICATIONS

EN

Model Number	U2620
Power Supply	AC 100-240V, ~50/60Hz
Soundbar Drivers	2.25" × 3 (Soundbar) + 2.25" × 4 (Surround Speaker) + 6.5" (Subwoofer)
Frequency Response	35Hz - 18kHz
Standby Power	<0.5W
Operating Temperature	-10°C - 45°C/14°F - 113°F

Dimensions and Weight	
Soundbar	400 (W) × 70 (H) × 90 (D)mm 15.7" × 2.8" × 3.5"
Subwoofer	185 (W) × 288 (H) × 260 (D)mm 7.3" × 11.3" × 10.2"
Surround Speaker	135 (W) × 70 (H) × 90 (D)mm 5.3" × 2.8" × 3.5"
Packaging	476(W) × 338 (H) × 346 (D)mm 18.7" × 13.3" × 13.6"
Net Weight	7.9kg / 17.4lbs
Gross Weight	10.4kg / 22.9lbs

SAFETY INSTRUCTIONS

Please read this user manual carefully and save it for future reference.

Do not make unauthorized alterations to the product, doing so may compromise safety, regulatory compliance, system performance, and may void the warranty.

- Avoid dropping.
- Do not disassemble.
- Do not submerge in water
- Avoid extreme temperatures.
- Do not use the device outdoors during thunderstorms.
- Use original or certified cables.
- Do not place dangerous items on top of this device (e.g. liquid filled objects, lit candles).
- Clean with a dry, soft lint-free cloth. Do not use any corrosive cleaner or oil.
- To avoid hearing damage, do not listen for extended periods at high volume.
- Do not expose the batteries to extreme heat sources such as direct sunlight or open flames.
- The ideal operating temperature for this product and its accessories is between 41°F/5°C and 95°F/35°C.
- The adapter should be installed near the device and should be easily accessible.
- Do not use this product in environments of extreme heat or cold. Never expose this device to strong sunshine or wet environments.

PROPER DISPOSAL INSTRUCTIONS



This mark shown on the product or its packaging, indicates that this product should not be disposed of with other household waste at the end of its working life.

To prevent possible harm to the environment or human health from uncontrolled waste disposal, please separate this from other types of wastes and recycle it responsibly to promote the sustainable reuse of material resources.

Waste Electrical & Electronic Equipment

Household user should contact either the retailer where they purchased this product, or their local government office, for details of where and how they can take this item for environmentally safe recycling.

Business users should contact their suppliers and check the terms and conditions of the purchase contract. This product should not be mixed with other commercial wastes for disposal.

FCC REGULATORY COMPLIANCE

Any changes or modifications not expressly approved by the party responsible for compliance could void the user's authority to operate the equipment.

This device complies with Part 15 of the FCC Rules.

Operation is subject to the following two conditions:

- (1) This device may not cause harmful interference.
- (2) This device must accept any interference received, including interference that may cause undesired operation.

NOTE: This equipment has been tested and found to comply with the limits for a Class B digital device, pursuant to part 15 of the FCC Rules. These limits are designed to provide reasonable protection against harmful interference in a residential installation. This equipment generates, uses, and can radiate radio frequency energy, and if not installed and used in accordance with the instructions, may cause harmful interference to radio communications.

However, there is no guarantee that interference will not occur in a particular installation. If this equipment does cause harmful interference to radio or television reception, which can be determined by turning the equipment off and on, the user is encouraged to try to correct the interference by one or more of the following measures:

- Reorient or relocate the receiving antenna.
- Increase the separation between the equipment and the receiver.
- Connect the equipment to an outlet on a circuit different from that to which the receiver is connected.
- Consult the dealer or an experienced radio / TV technician for help.

This equipment complies with FCC radiation exposure limits set forth for an uncontrolled environment. This equipment should be installed and operated with a minimum distance of 20cm between the radiator & your body. This transmitter must not be co-located or operating in conjunction with any other antenna or transmitter.

ISED WARNINGS

This device contains licence-exempt transmitter (s) / receiver (s) that comply with Innovation, Science and Economic Development Canada's licence-exempt RSS (s). Operation is subject to the following two conditions:

- (1) This device may not cause interference.
- (2) This device must accept any interference, including interference that may cause undesired operation of the device.

L'émetteur/récepteur exempt de licence contenu dans le présent appareil est conforme aux CNR d'Innovation, Sciences et Développement économique Canada applicables aux appareils radio exempts de licence. L'exploitation est autorisée aux deux conditions suivantes:

- (1) L'appareil ne doit pas produire de brouillage;
- (2) L'appareil doit accepter tout brouillage radioélectrique subi, même si le brouillage est susceptible d'en compromettre le fonctionnement.

The device meets the exemption from the routine evaluation limits in section 2.5 of RSS 102 and compliance with RSS-102 RF exposure, users can obtain Canadian information on RF exposure and compliance.

Le dispositif rencontre l'exemption des limites courantes d'évaluation dans la section 2.5 de RSS 102 et la conformité à l'exposition de RSS-102 rf, utilisateurs peut obtenir l'information canadienne sur l'exposition et la conformité de rf.

This transmitter must not be co-located or operating in conjunction with any other antenna or transmitter. This equipment should be installed and operated with a minimum distance of 20 centimeters between the radiator and your body.

Cet émetteur ne doit pas être Co-placé ou ne fonctionnant en même temps qu'aucune autre antenne ou émetteur. Cet équipement devrait être installé et actionné avec une distance minimum de 20 centimètres entre le radiateur et votre corps.

Declaration of Conformity

We (Manufacturer is responsible for this declaration)
Ultimea Technology (Shenzhen) Limited
(Company name)

20th Floor, Building 4, Tianan Cloud Park, Bantian St.,
Longgang District Shenzhen, China 518000
(Company address)

Declare under our sole responsibility that the product
Trade Mark: ULTIMEA

Product Name: Poseidon D80 7.1 Channel Dolby
Atmos Soundbar

Model No.: U2620

To which this declaration relates is in conformity with
the essential requirement set out in the Council Directive
on the Approximation of the laws of the Member States
relating to RED Directive (2014/53/EU) & RoHS (2011/
65/EU) product is responsible to affix CE marking, the
following standards were applied:

EN 55032:2015/A1:2020
EN 55035:2017/A11:2020
EN IEC 61000-3-2:2019/A1:2021
EN 61000-3-3:2013/A2:2021
ETSI EN 301 489-1 V2.2.3 (2019-11)
ETSI EN 301 489-17 V3.2.4 (2020-09)
ETSI EN 300 328 V2.2.2 (2019-07)
EN 50663: 2017
EN IEC 62368-1:2020+A11:2020
IEC 62321-3-1:2013
IEC 62321-4:2013+A1:2017
IEC 62321-5:2013
IEC 62321-6:2015
IEC 62321-7-1:2015
IEC 62321-7-2:2017
IEC 62321-8:2017

Full Name: Yoyo.Yu

Position: Approbation Manager

Signature: 

Place/Date: Shenzhen, China / June. 20-2024

Trade Marks:



Dolby, Dolby Atmos, and the double-D symbol are registered trademarks of Dolby Laboratories Licensing Corporation. Manufactured under license from Dolby Laboratories. Confidential unpublished works. Copyright© 2012-2021 Dolby Laboratories. All rights reserved.



The Bluetooth® word mark and logos are registered trademarks owned by Bluetooth SIG, Inc. and any use of such marks by Soundlab Technology Co.,Ltd. is under license. Other trademarks and trade names are those of their respective owners.



The terms HDMI, HDMI High-Definition Multimedia Interface, HDMI trade dress and the HDMI Logos are trademarks or registered trademarks of HDMI Licensing Administrator, Inc.

ULTIMEA

Poseidon D80 7.1 Channel Dolby Atmos Soundbar
Model No.: U2620

 Ultimea GmbH
Buchenring 57, 22359 Hamburg, Germany

 EVATOST CONSULTING LTD
Office 101 32 Threadneedle Street, London, United
Kingdom, EC2R 8AY

@Dynamic Inc. All rights reserved, registered in the United States and
other countries.
9804 Crescent Center Drive, Suite 604, Rancho Cucamonga, CA 91730

Made in China



Manufacturer: Ultimea Technology (Shenzhen) Limited
Address: 20th Floor, Building 4, Tianan Cloud Park,
Bantian St., Longgang District, Shenzhen, China 518000

If you need our support, kindly reach out to our service
team. We are always glad to help.

+1 888-598-8875 (US)
Mon-Fri 9am-5pm (PST)
+49 89-628-25828 (EU)
Mon-Fri 9am-5pm (CET)

 support@ultimea.com

 support.ultimea.com



@ultimea_official