

100*95mm

Ledetech®

Model: F-M4

Size: 65.5*65.5*85.5mm Weight: 71.4g

Manufacturer: Ningbo Lede Computer Technology Co., LTD Place of origin: China

Address: 12 Jiahe Road, Fengshan Street, Yuyao City, Ningbo City, Zhejiang Province

Standard of execution: Q/NBLD001 - 2017

Place of origin: China

Time of warranty: 18 months

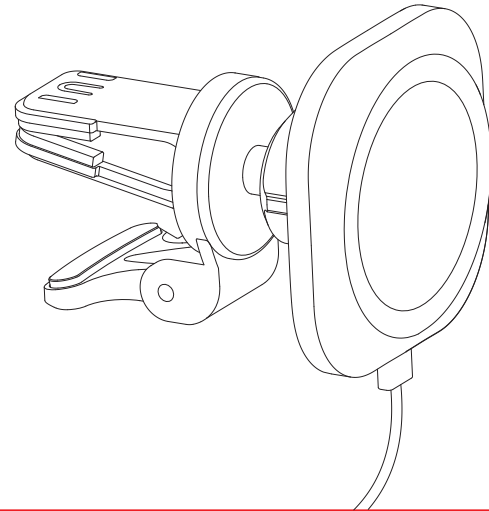
400-889-2826

www.ledetek.com

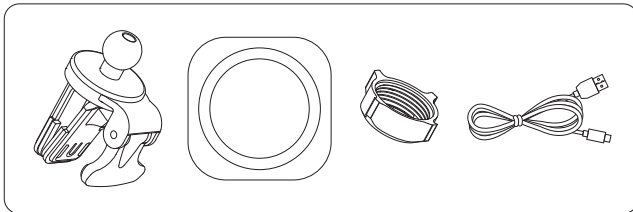
Magnetic suction mobile phone vehicle support

Instruction manual

LD-M4



Product components



Precautions

Limit of hazardous substances: Lead, copper, hexavalent chromium, polybrominated biphenyls and polybrominated diphenyl ethers content not more than 0.1% (mass fraction), The content of cadmium should not exceed 0.01% (mass fraction).

Use a power adapter of 20W or higher

Input: 5V≈3A or 9V≈2A or 12V≈2A (Max)

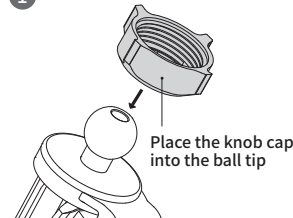
Output: 5W/15W (Max)

iPhone/Output: 7.5W (Max)

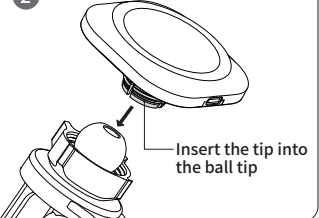
Suitable for mobile phones that support wireless charging and have magnetic absorption function

Installation Procedure

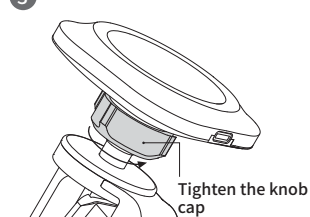
1



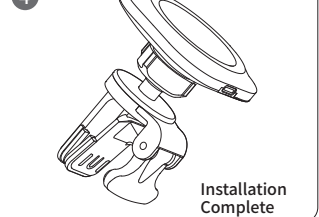
2



3



4



FCC statement:

This device complies with Part 15 of the FCC rules. Operation is subject to the following two conditions: 1) this device may not cause harmful interference, and 2) this device must accept any interference received, including interference that may cause undesired operation.

Note: This equipment has been tested and found to comply with the limits for a Class B digital device, pursuant to part 15 of the FCC Rules. These limits are designed to provide reasonable protection against harmful interference in a residential installation.

This equipment generates uses and can radiate radio frequency energy and, if not installed and used in accordance with the instructions, may cause harmful interference to radio communications. However, there is no guarantee that interference will not occur in particular installation. If this equipment does cause harmful interference to radio or television reception, which can be determined by turning the equipment off and on, the user is encouraged to try to correct the interference by one or more of the following measures:

- Reorient or relocate the receiving antenna.
- Increase the separation between the equipment and receiver.
- Connect the equipment into an outlet on a circuit different from that to which the receiver is connected.
- Consult the dealer or an experienced radio/TV technician for help.

Changes or modifications not expressly approved by the party responsible for compliance could void the user's authority to operate the equipment.

Radiation Exposure Statement

This device complies with FCC RF radiation exposure limits set forth for an uncontrolled environment. This transmitter must not be co-located or operating in conjunction with any other antenna or transmitter. During the operation of device a distance of 15 cm surrounding the device and 20 cm above the top surface of the device must be respected.