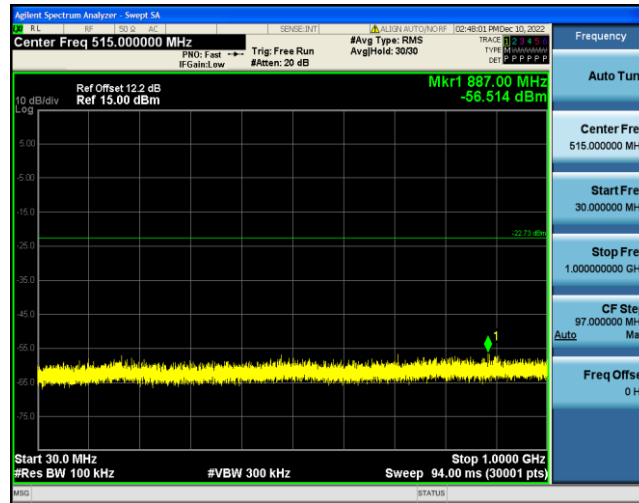


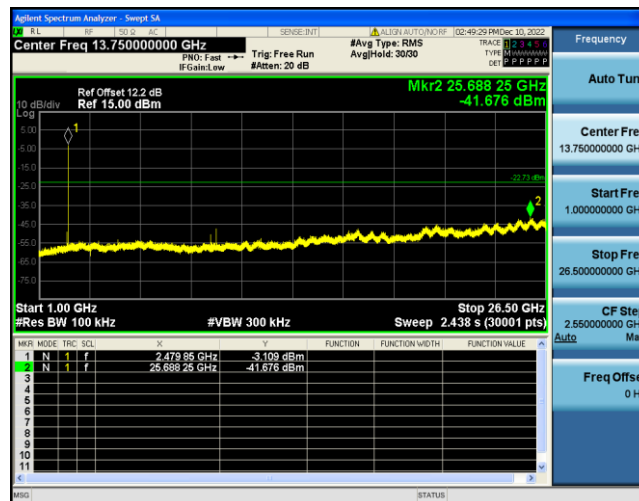
2DH5-Ant1-2480-0~Reference--2.73



2DH5-Ant1-2480-30~1000--2.73



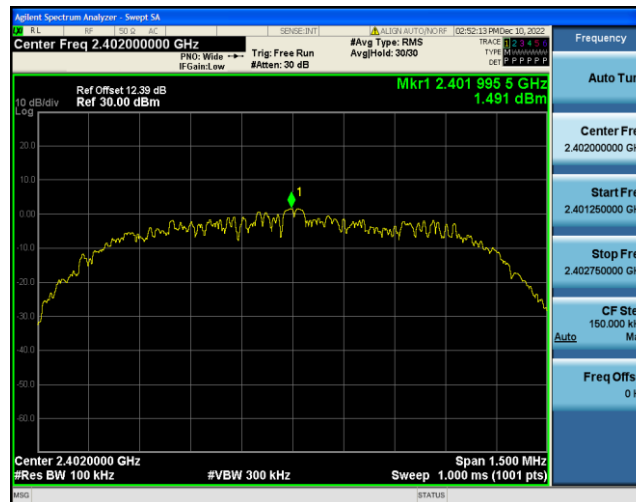
2DH5-Ant1-2480-1000-26500-2.73



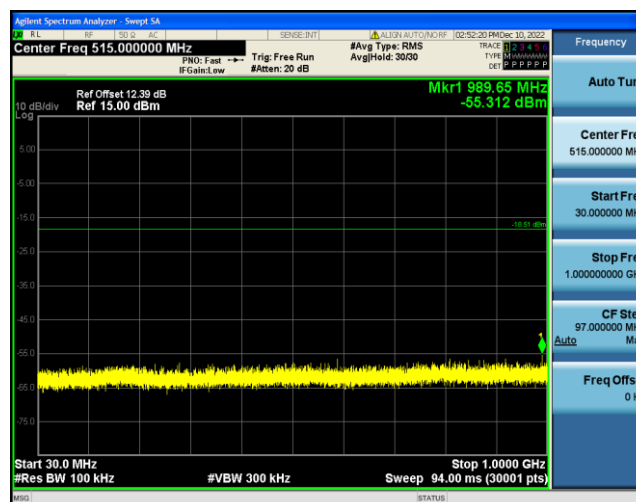
3DH5-Ant1-2402-0-Reference-1.49



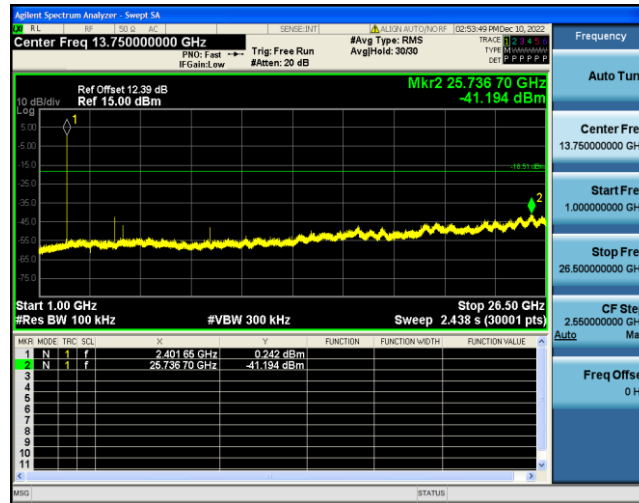
Report No.: PTC22083003101E-FC01



3DH5-Ant1-2402-30~1000-1.49



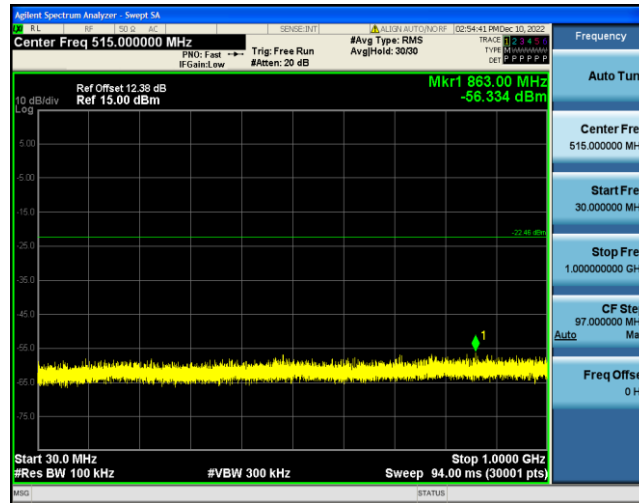
3DH5-Ant1-2402-1000~26500-1.49



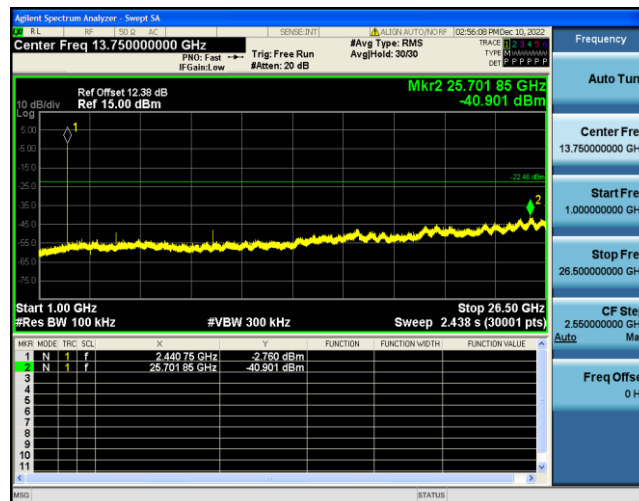
3DH5-Ant1-2441-0~Reference--2.46



3DH5-Ant1-2441-30~1000--2.46



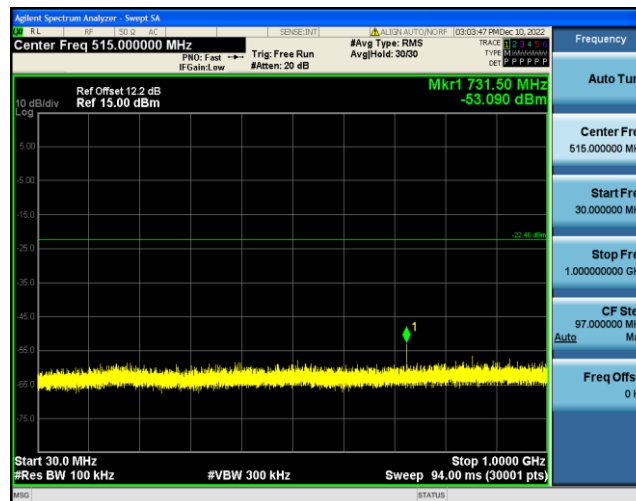
3DH5-Ant1-2441-1000-26500-2.46



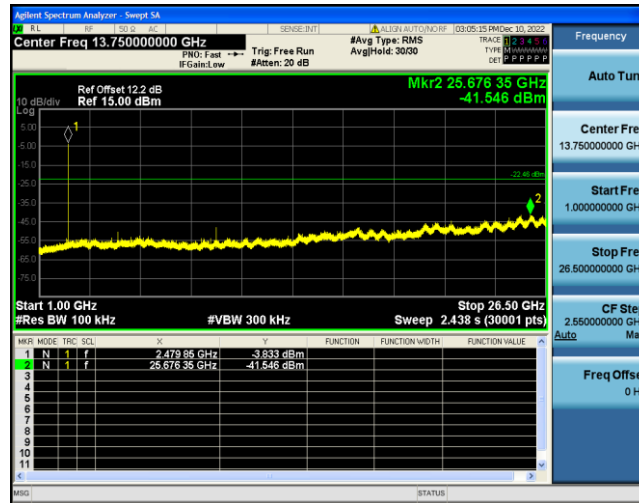
3DH5-Ant1-2480-0-Reference-2.46



3DH5-Ant1-2480-30~1000--2.46



3DH5-Ant1-2480-1000~26500--2.46





14 Antenna Requirement

14.1 Test Standard and Requirement

Test Standard	FCC Part15 Section 15.203 /247(c)
Requirement	<p>1) 15.203 requirement:</p> <p>An intentional radiator shall be designed to ensure that no antenna other than that furnished by the responsible party shall be used with the device. The use of a permanently attached antenna or of an antenna that uses a unique coupling to the intentional radiator, the manufacturer may design the unit so that a broken antenna can be replaced by the user, but the use of a standard antenna jack or electrical connector is prohibited.</p> <p>2) 15.247(c) (1)(i) requirement:</p> <p>Systems operating in the 2400-2483.5 MHz band that is used exclusively for fixed. Point-to-point operations may employ transmitting antennas with directional gain greater than 6dBi provided the maximum conducted output power of the intentional radiator is reduced by 1 dB for every 3 dB that the directional gain of the antenna exceeds 6 dBi.</p>

14.2 Antenna Connected Construction

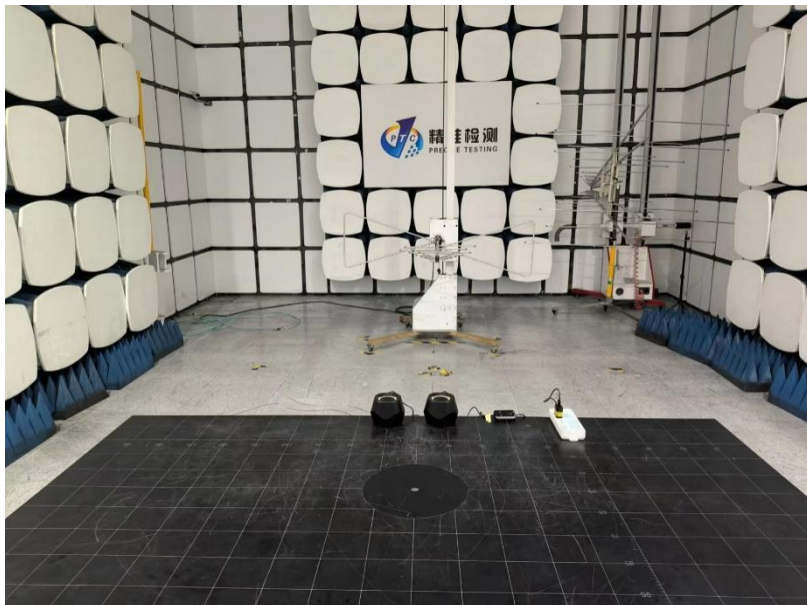
The antenna is PCB Antenna which permanently attached, and the best case gain of the antenna is 1.68dBi. It complies with the standard requirement.

15 APPENDIX I -- TEST SETUP PHOTOGRAPH

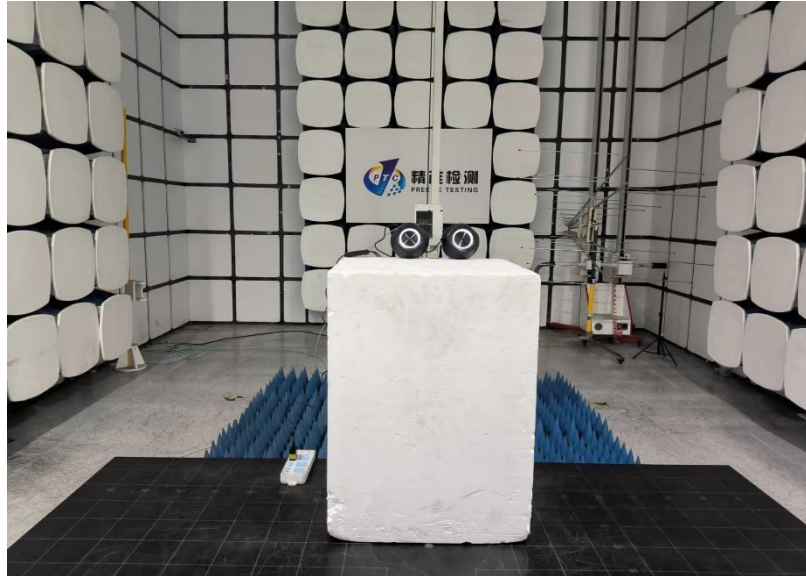
Conducted Emissions



Radiated Emissions
From 30M-1GHz

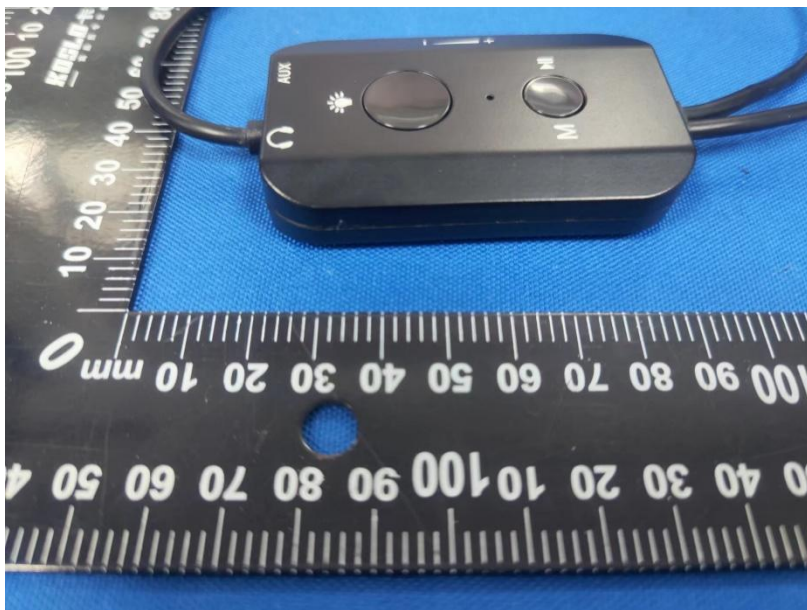


Above 1GHz

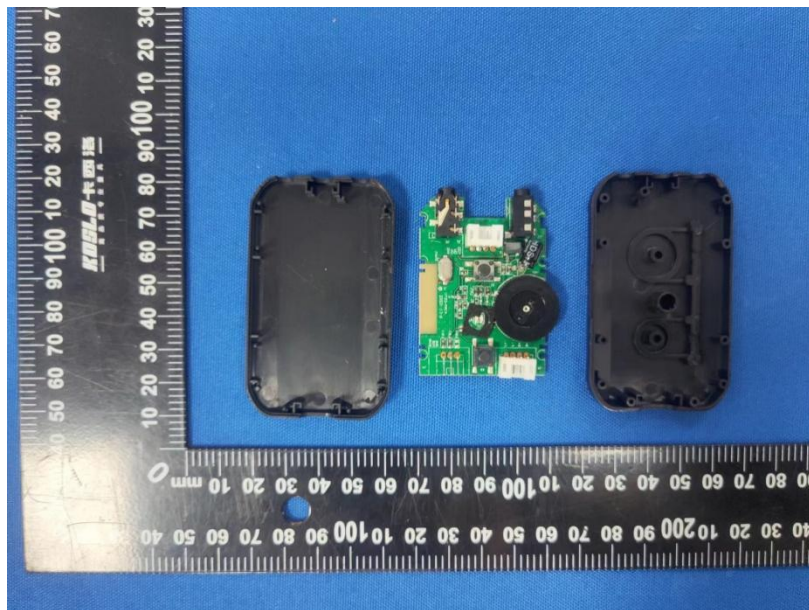


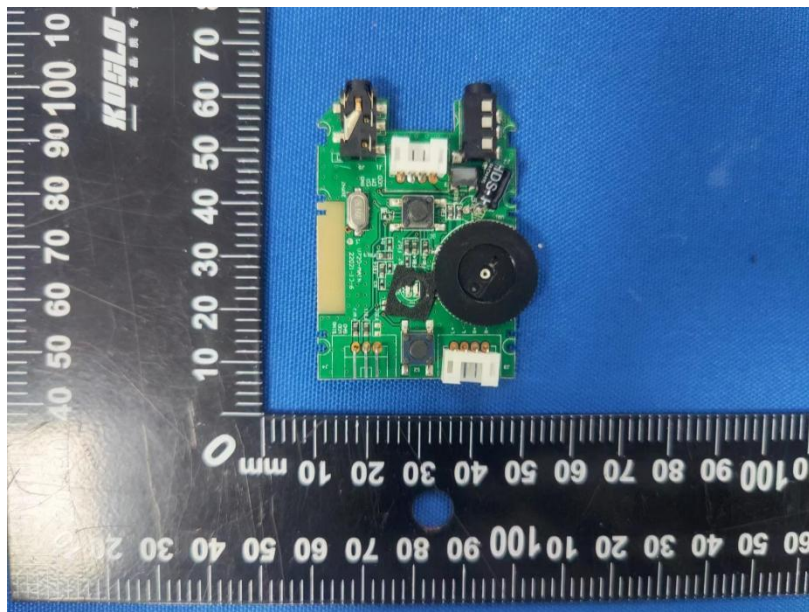
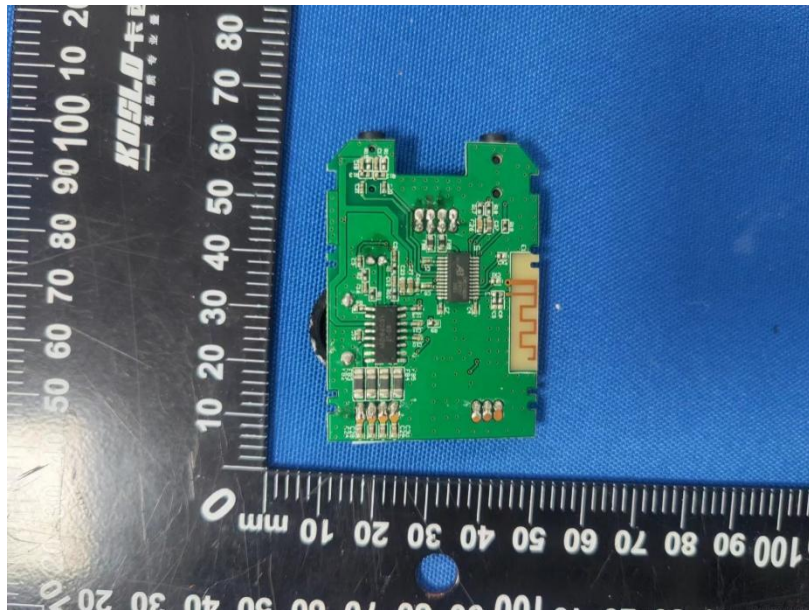
16 APPENDIX II -- EUT PHOTOGRAPH











*****THE END REPORT*****