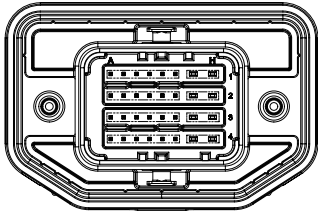


General Specifications

Model No.: CCampV1
Output power: 100W RMS
Power input: 12VDC
Connector P/N: Molex 643341001
Frequency response: 55Hz - 20KHz
Signal-to-noise ratio: > 80dB
Wireless specification
Bluetooth® version: 5.1
Bluetooth® profile: A2DP 1.3, AVRCP 1.6
Bluetooth® transmitter frequency range: 2.402 - 2.480GHz
Bluetooth® transmitter power: ≤ 10dBm (EIRP)
Bluetooth® transmitter modulation: GFSK, π/4 DQPSK, 8DPSK

Connect to the power amplifier through the cable with Molex 643191211. As long as the 12V power supply is connected and the speaker box is matched, you can search and connect Bluetooth through mobile phones and other devices, and then play music. In addition, if connected to the CAN BUS, you CAN control the power amplifier volume through the CAN BUS.

Molex P/N:643341001		
PIN	NET NAME	Remark
H4	LOUT-	Speaker out
H3	GND_POWER	Power IN
H2	12V_POWER	Power IN
H1	ROUT+	Speaker out
G4	LOUT+	Speaker out
G3	GND_POWER	Power IN
G2	12V_POWER	Power IN
G1	ROUT-	Speaker out
F4	/	NC
F3	/	NC
F2	/	NC
F1	GND_CAN	Reserved
E4	/	NC
E3	/	NC
E2	/	NC
E1	CANH	CAN BUS
D4	SUBOUT-	Reserved
D3	/	NC
D2	/	NC
D1	CANL	CAN BUS
C4	SUBOUT+	Reserved
C3	/	NC
C2	/	NC
C1	GND_CAN	Reserved
B4	/	NC
B3	/	NC
B2	/	NC
B1	AING	Reserved
A4	IN2	Reserved
A3	IP2	Reserved
A2	IN1	Reserved
A1	IP1	Reserved



H2	12V_POWER
G2	
H3	GND_POWER
G3	
G4	Speaker L+
H4	Speaker L-
H1	Speaker R+
G1	Speaker R-
E1	CAN BUS_H
D1	CAN BUS_L

FCC Statement

This equipment has been tested and found to comply with the limits for a Class B digital device, pursuant to part 15 of the FCC Rules. These limits are designed to provide reasonable protection against harmful interference in a residential installation. This equipment generates uses and can radiate radio frequency energy and, if not installed and used in accordance with the instructions, may cause harmful interference to radio communications. However, there is no guarantee that interference will not occur in a particular installation. If this equipment does cause harmful interference to radio or television reception, which can be determined by turning the equipment off and on, the user is encouraged to try to correct the interference by one or more of the following measures:
—Reorient or relocate the receiving antenna.
—Increase the separation between the equipment and receiver.
—Connect the equipment into an outlet on a circuit different from that to which the receiver is connected.
—Consult the dealer or an experienced radio/TV technician for help.

This device complies with Part 15 of the FCC Rules. Operation is subject to the following two conditions: (1) this device may not cause harmful interference, and (2) this device must accept any interference received, including interference that may cause undesired operation.

Caution: FCC/IC Radiation Exposure Statement

This equipment complies with FCC and IC RSS-102 radiation exposure limits set forth for an uncontrolled environment. This equipment should be installed and operated with a minimum distance of 20cm between the radiator and any part of your body. This transmitter must not be co-located or operating in conjunction with any other antenna or transmitter.

Pour se conformer aux exigences de conformité CNR 102 RF exposition, une distance de séparation d'au moins 20 cm doit être maintenue entre l'antenne de cet appareil et toutes les personnes. Cet émetteur ne doit pas être Co-placé ou ne fonctionnant en même temps qu'aucune autre antenne ou émetteur.

Caution!

Any changes or modifications not expressly approved by the party responsible for compliance could void the user's authority to operate the equipment.

Canada Statement

This device contains licence-exempt transmitter(s)/receiver(s) that comply with Innovation, Science and Economic Development Canada's licence-exempt RSS(s). Operation is subject to the following two conditions:
(1) This device may not cause interference.
(2) This device must accept any interference, including interference that may cause undesired operation of the device.

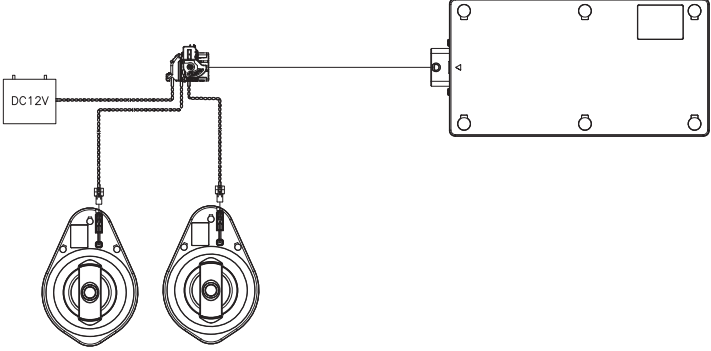
L'émetteur/récepteur exempt de licence contenu dans le présent appareil est conforme aux CNR d'Innovation, Sciences et Développement économique Canada applicables aux appareils radio exempts de licence. L'exploitation est autorisée aux deux conditions suivantes :
1. L'appareil ne doit pas produire de brouillage;
2. L'appareil doit accepter tout brouillage radioélectrique subi, même si le brouillage est susceptible d'en compromettre le fonctionnement.

This class [B] digital apparatus complies with Canadian ICES-003. CAN ICES-003 (B) / NMB-003 (B)
Ce produit de classe [B] est conforme aux spécifications de la réglementation ICES-003 du Canada. CAN ICES-003 (B) / NMB-003 (B)

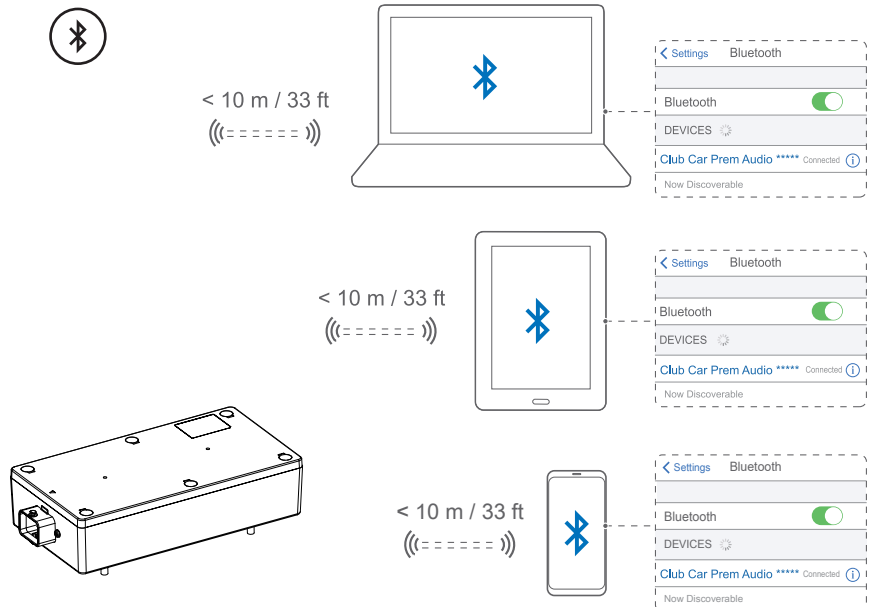


The Bluetooth® word mark and logos are registered trademarks owned by Bluetooth SIG, Inc. and any use of such marks by Club Car LLC is under license. Other trademarks and trade names are those of their respective owners.

Connection Schematic Diagram



Bluetooth Connected



Play Music

