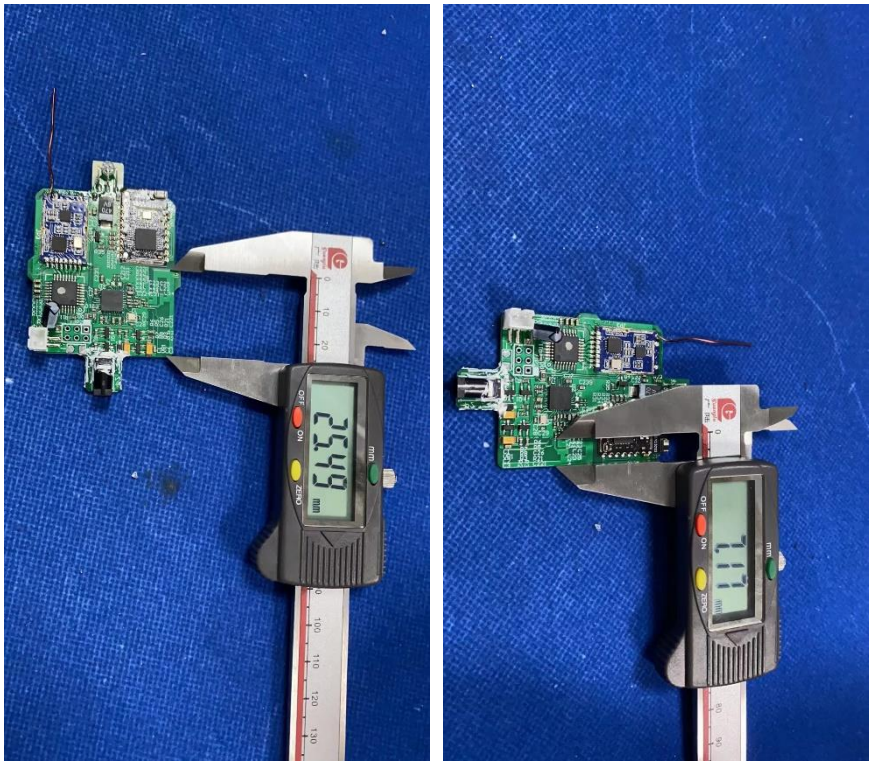


# 1. Antenna Description:

Antenna type	PCB BT Antenna
Model	50805
Frequency range	2402-2480MHz
Manufacturer	ZhongShan Ya Tai Electric Appliances Co. Ltd
ANT Peak Gain	2.00 dBi

# 2. Antenna Photo:

Length :25.49mm  
Width:7.17mm



# 3. Test Equipment & Conditions

### 3.1 Test instrument

VSWR is tested using Agilent E5071B connected to a hand mechanism, and the status is free space.

### 3.2 Test environment and methods

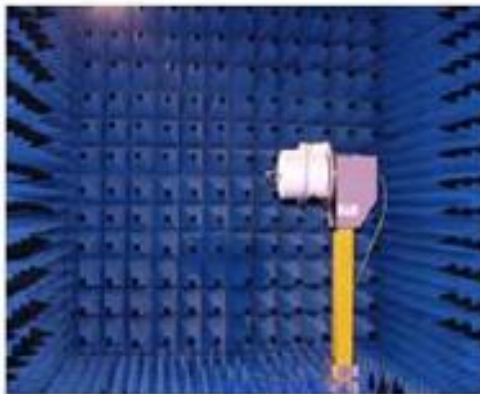
Dark room specifications: ETS-743

TD-SCDMA test equipment: StarPoint SP6010/Agilent 8960

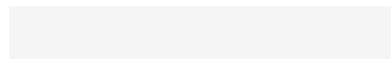
LTE-TDD/FDD-SCDMA test equipment: StarPoint SP8011/CMW500

WCDMA/GSM/CDMA test equipment: Agilent 8960

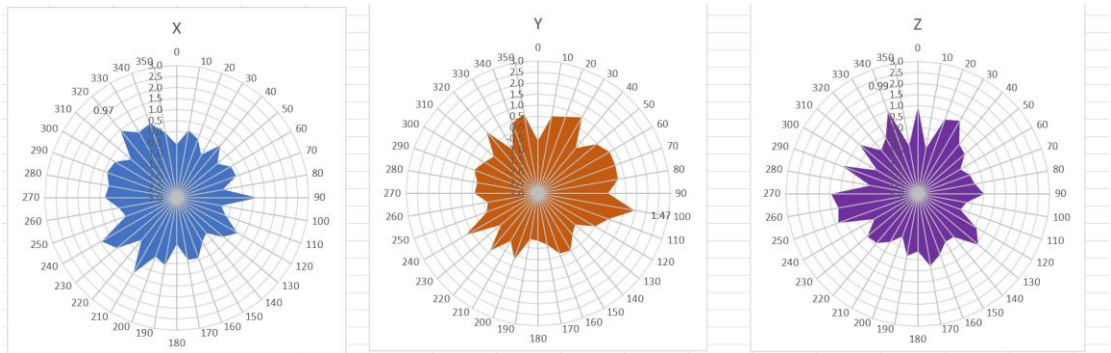
Passive efficiency testing equipment: Agilent Technologies E5071B



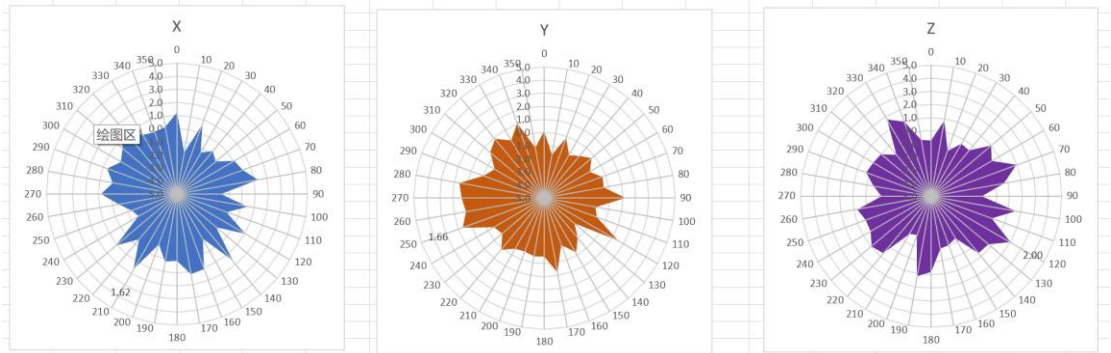
## 4 . Antenna Radiation Pattern



2402MHz



2440MHz



2480MHz

