

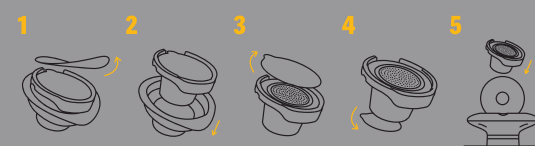
WELCOME TO EXPERIENCES BEYOND THE ORDINARY

Before you begin exploring our unique worlds, please remember to follow these important steps prior to dropping a pod:

CHECK IF YOUR PODS HAVE SEALS

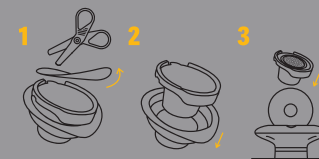
PODS WITH SEALS

1. Peel off the packaging seal.
2. Take out the pod from its packaging.
3. Remove the **top** seal.
4. Remove the **bottom** seal.
5. Drop a pod in your OOKA and enjoy your session.



PODS WITHOUT SEALS

1. Cut to open the pod packaging.
2. Take out the pod from its packaging.
3. Drop a pod in your OOKA and enjoy your session.



Scan to discover flavors, moods, accessories and much more!



FINISHING & CLEANING

8. FINISHING YOUR SESSION

- OOKA automatically switches off at the end of a session.
- Alternatively, you can end your session by pressing and holding the power button until its light goes off.
- A descending beep and the Portal ring flashing red indicate the end.



Watch our videos to bring your OOKA experience to life.

9. REMOVING THE POD



- Open the Portal lid. OOKA will beep to warn you of hot surfaces. Use tongs to remove the pod and dispose of it carefully.



10. CLEANING YOUR OOKA

- Wait until the red Portal ring goes off.
- Remove the water from the tank.
- Use the OOKA brush to clean the inside of the device.



AIR2021-0016-03



GET READY TO ENJOY!

ONE PORTAL.
MANY WORLDS.
OOKA

QUICK START GUIDE

1. CHARGE YOUR OOKA

- Please charge your ooka fully with the power supply unit provided.



- Battery power level, pulsates while charging
- Connected to power

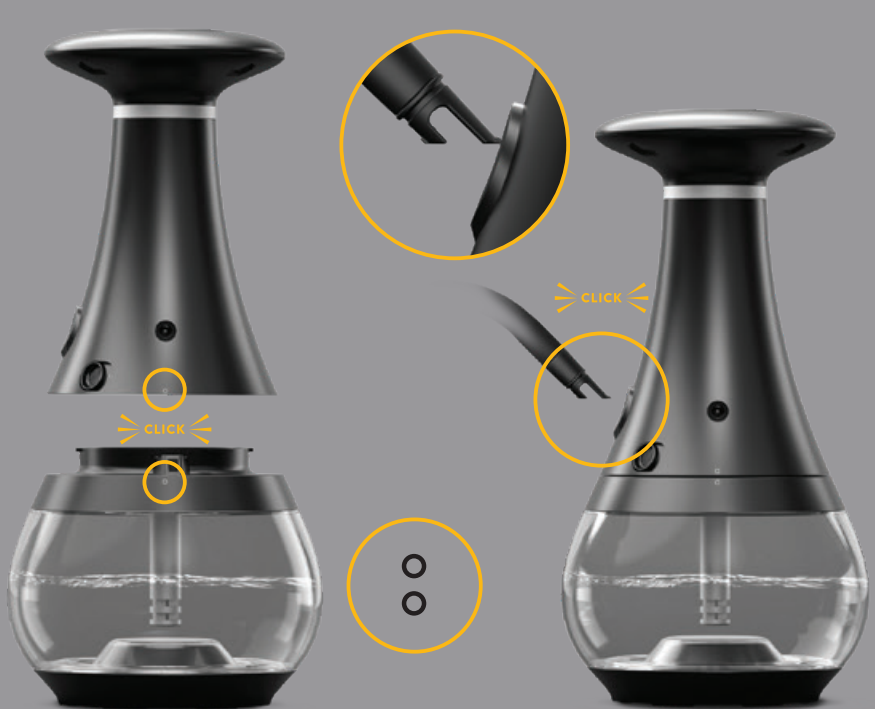
2. FILL WITH WATER

- Slide the tank release button and lift the device body.
- Add water to the fill line indicated.



3. CONNECT THE HOSE

- Position the hose as indicated below and insert it until you hear a click.



4. DROP A POD

- Check if your pod has seals. Remove both the top and bottom seals (if any).
- Press the (A) open button to open the (B) Portal lid, drop a pod and close it.



5. POWER UP

- Press and hold the (C) power button until the (D) outer ring is fully lit.
- A beep and the (E) Portal ring pulsing amber indicate that ooka is heating up.



Wait for a few minutes.

6. READY

- An ascending beep and the Portal ring in solid amber indicate your session is ready.



7. ENJOY!

- Twist the air flow adjuster to alter the draw pressure. Sit back and enjoy your session. The cloud and taste will build over time.



Scan for English Escanee para Español EN ES
Scannen Sie für Deutsch Rechercher en Français DE FR
Cerca l'italiano مسح الكود للغة العربية IT E

