

Wave Wireless Speaker System

User's Guide for Model ISB273B v3045



Features

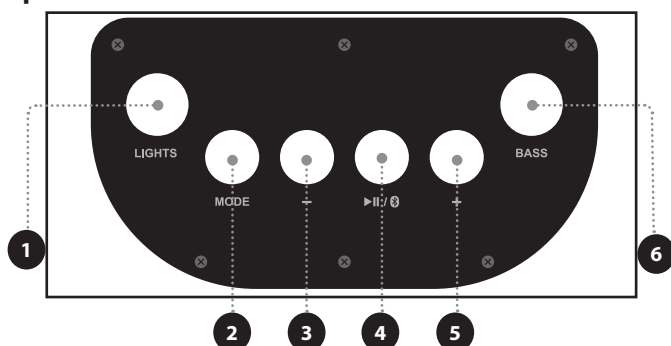
- Bluetooth wireless - range 60 ft.
- Party +: Connect to another ISB273 speaker
- Voice prompts announce speaker functions
- LED light effects
- Bass Boost
- Microphone Input
- 3.5mm Aux in
- MicroSD card slot
- USB port – supports MP3 file format
- Carry handle
- Built-in rechargeable battery
- Battery life: approx. 5 hours at 50%

Includes

- User's Guide
- MicroUSB to USB charging cable

Overview

Top Controls



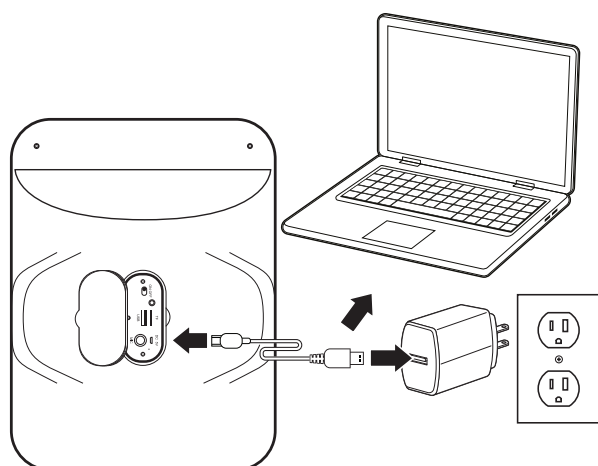
Controls and Functions

1. **Lights:** Press to cycle through LED light effects. Press and hold 5 seconds to turn Voice Prompts on/off.
2. **Mode/Bluetooth:** Press to switch between Bluetooth, Aux, USB, and MicroSD. Press and hold for 3 seconds to activate Party + Mode.
3. **Vol -/Previous:** Press to decrease volume. Press and hold to return to previous track.
4. **Play/Pause:** Press to play or pause tracks. Press and hold for 3 seconds to disconnect Bluetooth.
5. **Vol +/Next:** Press to increase volume. Press and hold to skip to next track.
6. **Bass:** Press to turn Bass Boost feature on/off.

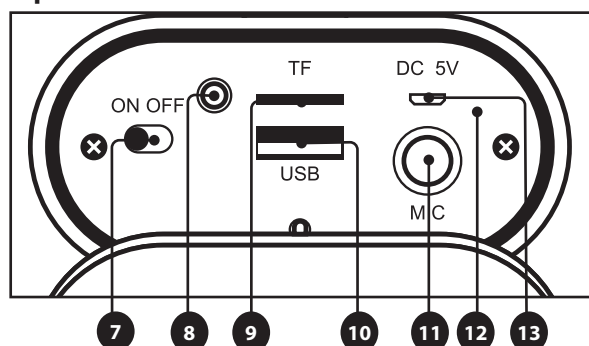
Charging the Battery

To power the unit or charge the internal battery, connect the DC Power Input on the speaker to a powered-on computer or standard power outlet using an UL certified AC/DC power adapter (not included).

After charging, unplug charging cable from the speaker. You can play music and operate the speaker normally during charging.



Back Inputs



7. **Power On/Off**
8. **Aux In (3.5mm Input).**
9. **MicroSD Card Slot**
10. **USB Port**
11. **Microphone Input**
12. **LED Charging Indicator**
13. **DC Power Input:** Use to charge the internal battery and power the speaker. Charge time is approximately 4 hours.

Bluetooth Wireless

Pairing & Playing Audio

1. When powered on, the speaker will enter Bluetooth Mode automatically. If you are playing from a different source, press the **Mode** button to select **Bluetooth Mode**.
2. Using the Bluetooth setting on your device, search for new devices and select **ISB273**. Refer to the user's manual for your specific device for instructions on pairing and connecting Bluetooth devices.
3. When successfully paired, a voice prompt will announce the connection.
4. Use the controls on the connected device to select and begin playing audio. Use the controls on the speaker or the connected device to play, pause, and adjust volume.

Note: The speaker will automatically connect to the last paired device when powering on. If your device becomes unpaired or it is unable to connect, press and hold the **Play/Pause/Pair** button for 3 seconds to enter pairing mode. A voice prompt will announce "Bluetooth is connecting" start from step two to connect to your device.

Party + Mode

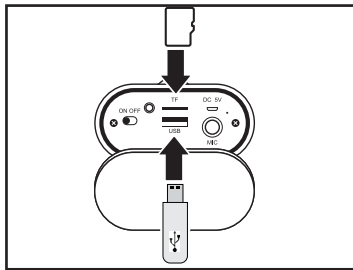
Pair two **ISB273** speakers wirelessly to double the audio from your Bluetooth device.

1. After powering on, press and hold the **Mode** button for 3 seconds to enter Party + mode. When connected, you will hear a notification sound.
2. Using the Bluetooth setting on your device, search for new devices and select **ISB273**.
3. To exit Party + Mode, press and hold the **Mode** button for 3 seconds on either speaker.

Note: When powered off while paired, the two speakers will reconnect again after powering on.

USB Drive & MicroSD Input

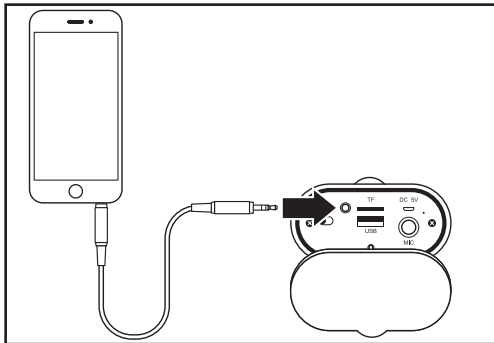
1. Load a USB drive or a Micro SD card into the appropriate media port.
2. The speaker will automatically switch to USB or SD mode.
3. Use the controls on the speaker to select and play and pause audio from the connected drive.



Aux In

Requires a 3.5mm audio cable (included).

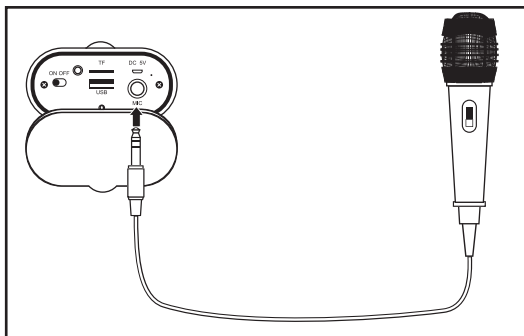
1. Connect a 3.5mm audio cable to the **Aux In** on the speaker and the **audio output/headphone jack** on an audio device.
2. The speaker will automatically switch to **Aux in** mode.
3. Use the controls on the connected device to select and play audio.



Using a Microphone

To use a microphone (not included), plug one end of a microphone cable into your microphone and plug the other end of the cable into the **Microphone Input**.

To detach the microphone, turn down the speaker volume and unplug the microphone cable from the speaker, then detach the microphone from the cable.



Customer Support

To download this User's Guide in English, Spanish, or French, or to get answers to frequently asked questions, visit the support section at: www.iLiveElectronics.com

Para descargar este Manual del Usuario en inglés, español y francés, o para obtener respuestas a preguntas frecuentes, visite la sección de apoyo en: www.iLiveElectronics.com

Pour télécharger ce guide de l'utilisateur en anglais, espagnol ou français, ou pour obtenir des réponses à des questions fréquemment posées, consultez la rubrique d'assistance sur: www.iLiveElectronics.com

For Warranty Information and the most up-to-date version of this User's Guide, go to www.iLiveElectronics.com

Customer Service: **1-888-999-4215** | Email Support: prodinfo@dpiinc.com | Email Parts: partsinfo@dpiinc.com

Copyright © 2023 Digital Products International (DPI, Inc.) All other trademarks appearing herein are the property of their respective owners. Specifications are subject to change without notice.

Important Safety Instructions

- Read these Instructions.
- Keep these Instructions.
- Heed all Warnings.
- Follow all instructions.
- Do not use this apparatus near water.
- Clean only with a dry cloth.
- Do not block any ventilation openings. Install in accordance with the manufacturer's instructions.
- Do not install near any heat sources such as radiators, heat registers, stoves, or other apparatus (including amplifiers) that produce heat.
- Do not defeat the safety purpose of the polarized or grounding-type plug. A polarized plug has two blades with one wider than the other. A grounding type plug has two blades and a third grounding prong. The wide blade or the third prong are provided for your safety. When the provided plug does not fit into your outlet, consult an electrician for replacement of the obsolete outlet.
- Protect the power cord from being walked on or pinched particularly at plugs, convenience receptacles, and the point where they exit from the apparatus.
- Only use attachments/accessories specified by the manufacturer.
- Unplug this apparatus during lightning storms or when unused for long periods of time.
- Refer all servicing to qualified service personnel. Servicing is required when the apparatus has been damaged in any way, such as power-supply cord or plug is damaged, liquid has been spilled or objects have fallen into the apparatus, the apparatus has been exposed to rain or moisture, does not operate normally, or has been dropped.

FCC Warnings

Warning: Changes or modifications to this unit not expressly approved by the party responsible for compliance could void the user's authority to operate the equipment.

NOTE: This equipment has been tested and found to comply with the limits for a Class B digital device, pursuant to Part 15 of the FCC Rules. These limits are designed to provide reasonable protection against harmful interference in a residential installation. This equipment generates, uses, and can radiate radio frequency energy and, if not installed and used in accordance with the instructions, may cause harmful interference to radio communications. However, there is no guarantee that interference will not occur in a particular installation. If this equipment does cause harmful interference to radio or television reception, which can be determined by turning the equipment off and on, the user is encouraged to try to correct the interference by one or more of the following measures:

- Reorient or relocate the receiving antenna.
- Increase the separation between the equipment and receiver.
- Connect the equipment into an outlet on a circuit different from that to which the receiver is connected.
- Consult the dealer or an experienced radio/TV technician for help.
- The device has been evaluated to meet general RF exposure requirement. The device can be used in portable exposure condition without restriction.

Additional Warnings and Precautions

- **CAUTION:** TO PREVENT ELECTRIC SHOCK, MATCH WIDE BLADE OF PLUG TO WIDE SLOT, FULLY INSERT.
- Mains plug is used as disconnect device and it should remain readily operable during intended use. In order to disconnect the apparatus from the mains completely, the mains plug should be disconnected from the mains socket outlet completely.
- **WARNING:** Shock hazard - Do Not Open.
- **CAUTION:** Use of controls or adjustments or performance of procedures other than those specified may result in hazardous radiation exposure.
- **WARNING:** Changes or modifications to this unit not expressly approved by the party responsible for compliance could void the user's authority to operate the equipment.
- **WARNING:** Do not place this unit directly onto furniture surfaces with any type of soft, porous, or sensitive finish. As with any rubber compound made with oils, the feet could cause marks or staining where the feet reside. We recommend using a protective barrier such as a cloth or a piece of glass between the unit and the surface to reduce the risk of damage and/or staining.
- **WARNING:** Do not ingest battery, chemical burn hazard.
- Battery shall not be exposed to excessive heat such as sunshine, fire or the like.
- Lithium batteries, like all rechargeable batteries, are recyclable and should be recycled or disposed of according to state and local guidelines. They should never be disposed of in normal household waste and they should never be incinerated, as they might explode. Contact your local government for disposal or recycling practices in your area.



WARNING: To reduce the risk of electric shock, do not remove cover (or back). No user-serviceable parts inside. Refer servicing to qualified service personnel.



The exclamation point within an equilateral triangle is intended to alert the user to the presence of important operating and maintenance (servicing) instructions in the literature accompanying the appliance.



The lightning flash with arrowhead symbol, within an equilateral triangle, is intended to alert the user to the presence of un-insulated "dangerous voltage" within the product's enclosure that may be of sufficient magnitude to constitute a risk of electric shock to persons.



This symbol indicates that this product incorporates double insulation between hazardous mains voltage and user accessible parts.



WARNING: This product can expose you to chemicals including lead, which is known to the State of California to cause cancer. For more information go to: www.P65Warnings.ca.gov This product meets and complies with required Federal product guidelines.

