

Block Party Wireless Party Machine

User's Guide for Model IJB425B v3406-01



Important Safety Instructions

- Read these Instructions.
- Keep these Instructions.
- Heed all Warnings.
- Follow all instructions.
- Do not use this apparatus near water.
- Clean only with a dry cloth.
- Do not block any ventilation openings. Install in accordance with the manufacturer's instructions.
- Do not install near any heat sources such as radiators, heat registers, stoves, or other apparatus (including amplifiers) that produce heat.
- Do not defeat the safety purpose of the polarized or grounding - type plug. A polarized plug has two blades with one wider than the other. A grounding type plug has two blades and a third grounding prong. The wide blade or the third prong are provided for your safety. When the provided plug does not fit into your outlet, consult an electrician for replacement of the obsolete outlet.
- Protect the power cord from being walked on or pinched particularly at plugs, convenience receptacles, and the point where they exit from the apparatus.
- Only use attachments/accessories specified by the manufacturer.
- Unplug this apparatus during lightning storms or when unused for long periods of time.
- Refer all servicing to qualified service personnel. Servicing is required when the apparatus has been damaged in any way, such as power-supply cord or plug is damaged, liquid has been spilled or objects have fallen into the apparatus, the apparatus has been exposed to rain or moisture, does not operate normally, or has been dropped.

FCC Warnings

Changes or modifications not expressly approved by the party responsible for compliance could void the user's authority to operate the equipment. This equipment has been tested and found to comply with the limits for a Class B digital device, pursuant to Part 15 of the FCC Rules. These limits are designed to provide reasonable protection against harmful interference in a residential installation. This equipment generates uses and can radiate radio frequency energy and, if not installed and used in accordance with the instructions, may cause harmful interference to radio communications. However, there is no guarantee that interference will not occur in a particular installation. If this equipment does cause harmful interference to radio or television reception, which can be determined by turning the equipment off and on, the user is

encouraged to try to correct the interference by one or more of the following measures:

- Reorient or relocate the receiving antenna.
- Increase the separation between the equipment and receiver.
- Connect the equipment into an outlet on a circuit different from that to which the receiver is connected.
- Consult the dealer or an experienced radio/TV technician for help.

This device complies with part 15 of the FCC Rules. Operation is subject to the following two conditions: (1) This device may not cause harmful interference, and (2) this device must accept any interference received, including interference that may cause undesired operation.

The device has been evaluated to meet general RF exposure requirement. The device can be used in portable exposure condition without restriction.

Additional Warnings and Precautions

- **CAUTION:** TO PREVENT ELECTRIC SHOCK, MATCH WIDE BLADE OF PLUG TO WIDE SLOT, FULLY INSERT.
- Mains plug is used as disconnect device and it should remain readily operable during intended use. In order to disconnect the apparatus from the mains completely, the mains plug should be disconnected from the mains socket outlet completely.
- **WARNING:** Shock hazard - Do Not Open.
- **CAUTION:** Use of controls or adjustments or performance of procedures other than those specified may result in hazardous radiation exposure.
- **WARNING:** Changes or modifications to this unit not expressly approved by the party responsible for compliance could void the user's authority to operate the equipment.
- **WARNING:** Do not place this unit directly onto furniture surfaces with any type of soft, porous, or sensitive finish. As with any rubber compound made with oils, the feet could cause marks or staining where the feet reside. We recommend using a protective barrier such as a cloth or a piece of glass between the unit and the surface to reduce the risk of damage and/or staining.
- **WARNING:** Do not ingest battery, chemical burn hazard.
- Battery shall not be exposed to excessive heat such as sunshine, fire or the like.
- Lithium batteries, like all rechargeable batteries, are recyclable and should be recycled or disposed of according to state and local guidelines. They should never be disposed of in normal household waste, and they should never be incinerated, as they might explode. Contact your local government for disposal or recycling practices in your area.



WARNING: To reduce the risk of electric shock, do not remove cover (or back). No user-serviceable parts inside. Refer servicing to qualified service personnel.



The exclamation point within an equilateral triangle is intended to alert the user to the presence of important operating and maintenance (servicing) instructions in the literature accompanying the appliance.



The lightning flash with arrowhead symbol, within an equilateral triangle, is intended to alert the user to the presence of un-insulated "dangerous voltage" within the product's enclosure that may be of sufficient magnitude to constitute a risk of electric shock to persons.



This symbol indicates that this product incorporates double insulation between hazardous mains voltage and user accessible parts.



WARNING: This product can expose you to chemicals including lead, which is known to the State of California to cause cancer. For more information go to: www.P65Warnings.ca.gov **This product meets and complies with required Federal product guidelines.**

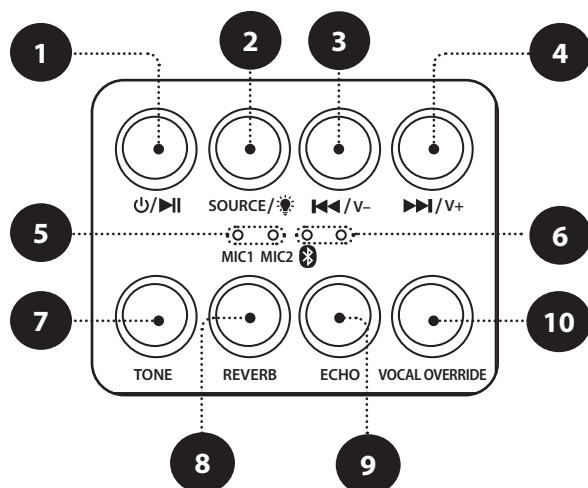
Features

- Bluetooth wireless
- Aux In
- MicroSD and USB inputs
- 5 voice changing effects for mic
- Color changing LED lights
- Playtime: up to 4.5 hours at 50% volume with lights on up to 6 hours at 50% volume with lights off

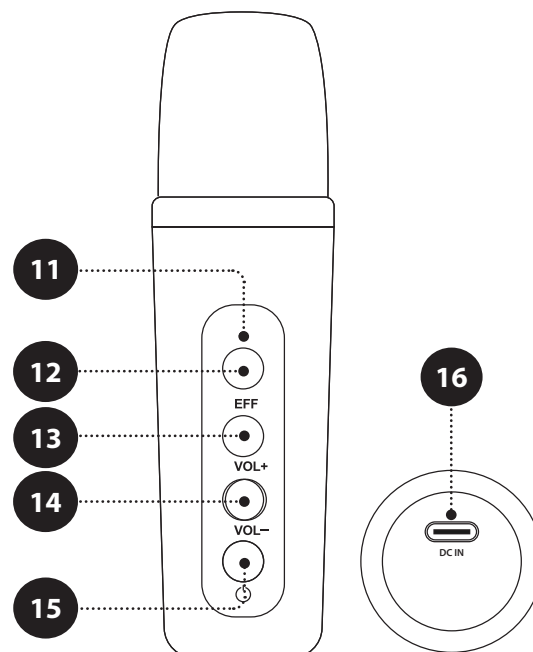
Includes

- User's guide
- 2 wireless microphones
- 2 USB-C to USB cables
- Aux cable

Controls and Functions



1. **Power/Play/Pause:** Press and hold to power on/off. Press to pause or resume playback. Press twice to manually pair or disconnect Bluetooth.
2. **Source/Lights:** Press and hold to switch between Aux/Bluetooth/USB/MicroSD modes. Press to cycle through light modes.
3. **Previous/Volume Down:** Press and hold to return to the previous track. Press to decrease volume.
4. **Next/Volume Up:** Press and hold to skip to the next track. Press to increase volume.
5. **Mic Connection LED Indicator Lights**
6. **Bluetooth Connection and Power LED Indicator Lights**
7. **Tone:** Press to cycle through mic vocal effects.
8. **Reverb:** Press to add a reverb effect to the microphone.
9. **Echo:** Press to add an echo effect to the microphone.
10. **Vocal Override:** Press to prioritize microphone vocals over backing music (for karaoke use).



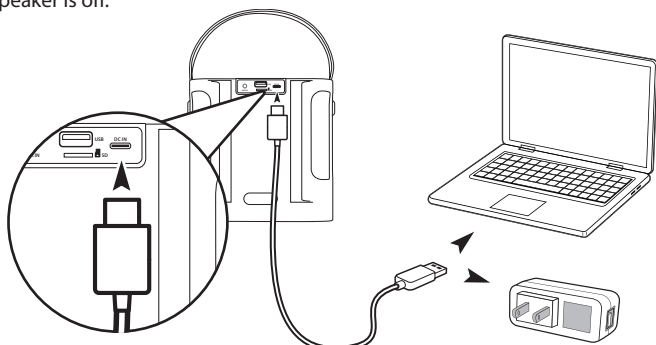
11. **LED Indicator Light (Microphone)**
12. **Vocal Effects:** Press to cycle through mic vocal effects.
13. **Mic Vol+:** Press to increase the mic volume.
14. **Mic Vol-:** Press to decrease the mic volume.
15. **Power:** Press and hold down to power the mic on/off.
16. **DC Power Input (Microphone)**

Note: Microphones must be plugged in to charge. They will not charge from the speaker in the microphone holders.

Charging the Speaker

Charge fully before use. The charge time is approximately 4 hours. When the speaker is charging, the **LED Indicator Light** will display a solid red light. When charging is complete, the indicator light will turn off.

To charge the speaker, connect a USB-C to USB cable (included) to the **DC power input** on the speaker and to the USB port of a powered-on computer or USB power adaptor (not included). For best results, charge while the speaker is off.



Charging the Microphones

Charge fully before use. The charge time is approximately 2 hours. Battery life is approximately 10 hours.

To charge the microphones, connect a USB-C to USB cable (included) to the **DC power input** on the microphone and to the USB port of a powered-on computer or USB power adaptor (not included). While charging, the **LED Indicator Light** on the microphone will display a solid red light. When the microphones are fully charged, the light will turn off.

Bluetooth Wireless

Pairing & Playing Audio

1. When powered on, the speaker will enter Bluetooth Mode automatically. To enter Bluetooth Mode from another mode, press and hold the **Source/Lights** button.
2. Using the Bluetooth setting on your device, search for new devices and select **IJB425**. Refer to the user's manual for your specific device for instructions on pairing and connecting Bluetooth devices.
3. When successfully paired, a voice prompt will announce "Bluetooth connected." The LED Indicator Light will also display a solid light.
4. Use the controls on the connected device to select and begin playing audio. Use the controls on the speaker or the connected device to play, pause, and adjust volume.

Note: The speaker will automatically connect to the last paired device when powering on. If your device becomes unpaired or it is unable to connect, press the **Power/Play/Pause** button twice to enter pairing mode. A voice prompt will announce "Bluetooth is connecting" start from step two to connect to your device.

Light Modes

Press the **Source/Lights** button to cycle through light effects. The speaker has 6 different light effect options: Gentle Rainbow, Color Wheel, Vivid Rainbow, Sharp Shift, Slow Morph, Dance Pulse. Press the **Source/Lights** Button twice to turn the lights on/off.

Customer Support

To download this User's Guide in English, Spanish, or French, or to get answers to frequently asked questions, visit the support section at:

www.iLiveElectronics.com

Para descargar este Manual del Usuario en inglés, español y francés, o para obtener respuestas a preguntas frecuentes, visite la sección de apoyo en:

www.iLiveElectronics.com

Pour télécharger ce guide de l'utilisateur en anglais, espagnol ou français, ou pour obtenir des réponses à des questions fréquemment posées, consultez la rubrique d'assistance sur: www.iLiveElectronics.com

For Warranty Information and the most up-to-date version of this User's Guide, go to www.iLiveElectronics.com

Customer Service: 1-888-999-4215 | Email Support: prodinfo@dpiinc.com | Email Parts: partsinfo@dpiinc.com

Copyright © 2025 Digital Products International (DPI, Inc.) All other trademarks appearing herein are the property of their respective owners. Specifications are subject to change without notice.

Vocal Effects

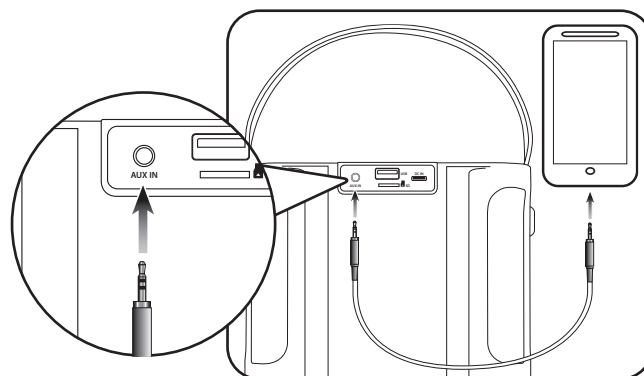
Press the **Vocal Effects** button to cycle through the microphone vocal effects. The microphones have 5 different vocal effect options: High Pitch, Low Pitch, Ultra High Pitch, Ultra Low Pitch, and Delay/Reverb.

Aux In

Requires a 3.5mm audio cable (included).

1. Connect a 3.5mm audio cable to the **Aux In** on the speaker and the **audio output/headphone jack** on an audio device.
2. The speaker will automatically switch to **Aux in** mode. To switch to Aux Mode from another source, press and hold the **Source/Lights** button.
3. Use the controls on the connected device to select and play audio.

Note: If the playback volume through the speaker is low, make sure the volume level on your connected device is turned up.



USB and MicroSD

Supports USB drives and MicroSD cards up to 16GB.

1. Insert a USB drive into the **USB Port** or a MicroSD card into the **MicroSD Slot** on the speaker.
2. The speaker will automatically switch to **MicroSD** or **USB** mode. To enter either playback mode from another source, press and hold the **Source/Lights** button.

