

**HAPPY
NUTS** 

THE BALLBER™



USER GUIDE

JUST THE TIPS

STEP 1

Choose your guard, if desired.

STEP 2

Press power button to turn on trimmer.

STEP 3


Slide trimmer blade across skin to remove hair, repeat as necessary.

STEP 4

Rinse the blade under running water and wipe with a soft cloth. Store in a dry place.



 Visit www.myhappynuts.com/register

 Register Ballber™ Pro & join [The Nut Club](#) to receive a free, extended warranty.

USING YOUR GUARDS



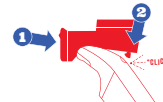
1MM GUARD: FOR NUT + BODY GROOMING

Attach the guard by placing it over the trimmer blade. To remove the guard, unlatch one side of the guard and remove from the blade.



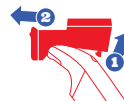
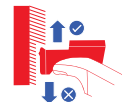
MULTI-ADJUSTABLE GUARD: FOR FACIAL HAIR GROOMING

To attach the multi-adjustable guard, place the front of the guard onto the blade and push the back of the guard into the hole on the backside of the trimmer. You will hear a click once properly connected.



Turn the adjustable dial to the desired setting between 0-10mm.

Begin trimming your facial hair by moving the blade in long strokes against the direction of hair growth.



To remove the guard, lift the backend of the guard off the trimmer, and carefully slide the guard off the blade.

CHARGING

WIRELESS CHARGING WITH THE DOCK

Insert the USB-C charging cord into the back of the dock and place the dock on a level surface. Insert charging cord into AC wall outlet. Make sure trimmer is turned off and place into the dock.

When fully charged, the indicator light on the digital display changes from red to green.

The digital display indicates the percentage of remaining battery. The Ballber™ Pro takes up to 4 hours to fully charge and lasts up to 120 minutes on a full charge.



QUICK CHARGING WITH THE POWER CORD



Make sure the trimmer is off and insert the charging cord into the bottom port of the trimmer then insert into wall AC Outlet.

When fully charged, the indicator light on the digital display changes from red to green.

The digital display indicates the percentage of remaining battery. The Ballber™ Pro takes up to 4 hours to fully charge and lasts up to 120 minutes on a full charge.

DISCLAIMER: Do not overcharge. Overcharging can shorten the life of the battery over time. Only use the power cord provided.

REPLACING THE BLADES

STEP 1

Make sure trimmer is off. Push the blade release button on the back of the trimmer while pulling the blade off the trimmer.

STEP 2

Insert replacement blade into the trimmer body. Make sure the two prongs are lined up with the two slots. You will hear a click when the blade properly inserted.



CAUTION: Ensure trimmer is turned off and not charging before replacing the blade. Do not use the trimmer if the blade is damaged. Throw the broken blade away immediately. For optimal performance, blades should be replaced every 6 months or when the trimmer no longer provides the results you expect. Visit www.myhappynuts.com to purchase The Ballber™ Pro replacement blades.



Visit www.myhappynuts.com to explore products for men's nuts.

Use code **BALLBERPRO10** for 10% off your next order | Limit one use per customer.

CLEANING

STEP 1

Use the cleaning brush to remove hair from the blade.

STEP 2

Rinse the blade under running water and wipe with a soft cloth.

STEP 3

Store in a dry place.

CAUTION: Always ensure trimmer is turned off and unplugged before cleaning. Clean after each use.

TRAVEL LOCK

Travel lock prevents the trimmer from accidentally powering on.



To activate travel lock, press and hold the on/off button for three seconds. The red travel lock symbol appears on the digital display when activated.



To deactivate the travel lock, press and hold the on/off button for three seconds. The green travel lock symbol appears on the digital display when travel lock is deactivated.

IMPORTANT SAFETY INSTRUCTIONS

For household use only. When using an electric product, always follow basic safety precautions. Read all instructions before using The Ballber™ Pro. Save these instructions for future reference.

WARNING

To reduce the risk of burns, fire, electric shock, or injury to persons

- Use this product only for its intended household use as described in this manual.
- This trimmer is not intended for use by persons (including children) with reduced physical, sensory or mental capabilities, or lack of experience and knowledge, unless they have been given supervision or instruction concerning use of the trimmer by a person responsible for their safety. Children should be supervised to ensure that they do not play with the trimmer.
- The trimmer is intended to cut hair, and is capable of cutting skin if not used carefully. Do not use attachments not specified by the manufacturer.
- This trimmer is for personal use only. Do not use it on animals.
- Always attach the power cord to the trimmer first, then to power outlet.
- Never use the trimmer if it has a damaged power cord or damaged power adapter, if it is not working properly, if it has been damaged, or after the charging cord has been dropped into water. Contact customer service at info@myhappynuts.com to determine if the product is under warranty.
- Keep the appliance away from direct sunlight and heated surfaces. Do not store at temperatures above 140°F (60°C). Do not place anything heavy on or pinch the appliance.
- To prevent possible damage to the power cord, do not wrap it around the product.
- Keep the air openings free of lint, hair and similar objects.
- Never drop or insert any object into any opening.
- Do not operate or plug in trimmer where aerosol (spray) products are being used or where oxygen is being administered.
- Always check the blade and trimming guard before using the trimmer. Do not use the trimmer if the blade or guard are damaged, as injury may occur.
- Always store the trimmer, attachments and power cord in a moisture-free area. Make sure the cord is disconnected from the trimmer.
- To recharge the battery, only use the supply unit provided with the trimmer.

DANGER

To reduce the risk of electric shock

- If connected to a power outlet, do not reach for the appliance that has fallen into water. Unplug immediately before retrieving appliance.
- Do not place or store the appliance where it can fall or be pulled into a tub or sink. Do not place or drop into water or other liquid.
- Do not use while fully submerged in water.
- Always unplug the appliance from the electrical outlet immediately after charging. Unplug this appliance before cleaning.

BATTERY

This appliance contains batteries that are non-replaceable & materials that are hazardous to the environment. Battery must be disposed of separately from household waste.

- Unplug and operate the trimmer until the battery runs out.
- Remove the screw at the base of the backside of the trimmer.
- Remove the battery and PCB (Protection Circuit Board) for disposal.
- Dispose of the battery safely according to your local environmental laws and guidelines.

For assistance, email us at info@myhappynuts.com for additional support.

The Ballber™ Pro is designed in California and assembled in China.

Distributed by Suit Up Brands LLC, Playa Del Rey, CA 90293.

© 2022 Suit Up Brands LLC. All rights reserved. Happy Nuts and The Ballber are trademarks of Suit Up Brands LLC, registered in the U.S.

: **77 K 5F B=B;**

This device complies with part 15 of the FCC Rules. Operation is subject to the following two conditions: (1) this device may not cause harmful interference, and (2) this device must accept any interference received, including interference that may cause undesired operation.

Any changes or modifications not expressly approved by the party responsible for compliance could void the user's authority to operate the equipment.

NOTE: This equipment has been tested and found to comply with the limits for a Class B digital device, pursuant to Part 15 of the FCC Rules. These limits are designed to provide reasonable protection against harmful interference in a residential installation. This equipment generates, uses and can radiate radio frequency energy and, if not installed and used in accordance with the instructions, may cause harmful interference to radio communications.

However, there is no guarantee that interference will not occur in a particular installation. If this equipment does cause harmful interference to radio or television reception, which can be determined by turning the equipment off and on, the user is encouraged to try to correct the interference by one or more of the following measures:

- Reorient or relocate the receiving antenna.
- Increase the separation between the equipment and receiver.
- Connect the equipment into an outlet on a circuit different from that to which the receiver is connected.
- Consult the dealer or an experienced radio/TV technician for help.

To maintain compliance with FCC's RF Exposure guidelines, This equipment should be installed and operated with minimum 20cm distance between the radiator and your body: Use only the supplied antenna.



**WE'RE
MAKING YOUR
NUTS OUR
BUSINESS.**



**SCAN TO ACTIVATE AN EXTENDED WARRANTY
AND GET 10% OFF YOUR NEXT ORDER.**