

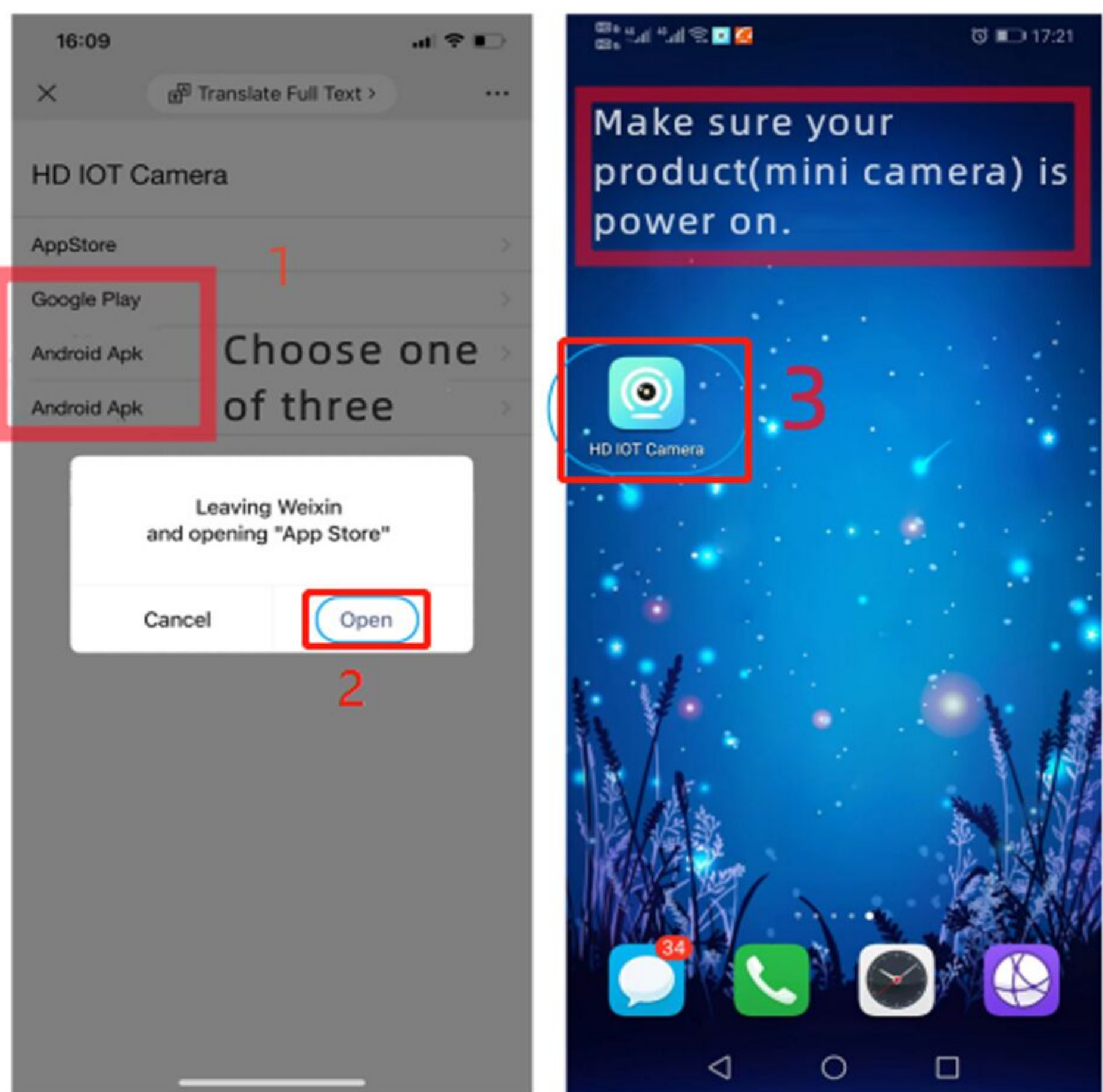
for Android

HD IOT Camera-Smart camera

Android Operating Instructions

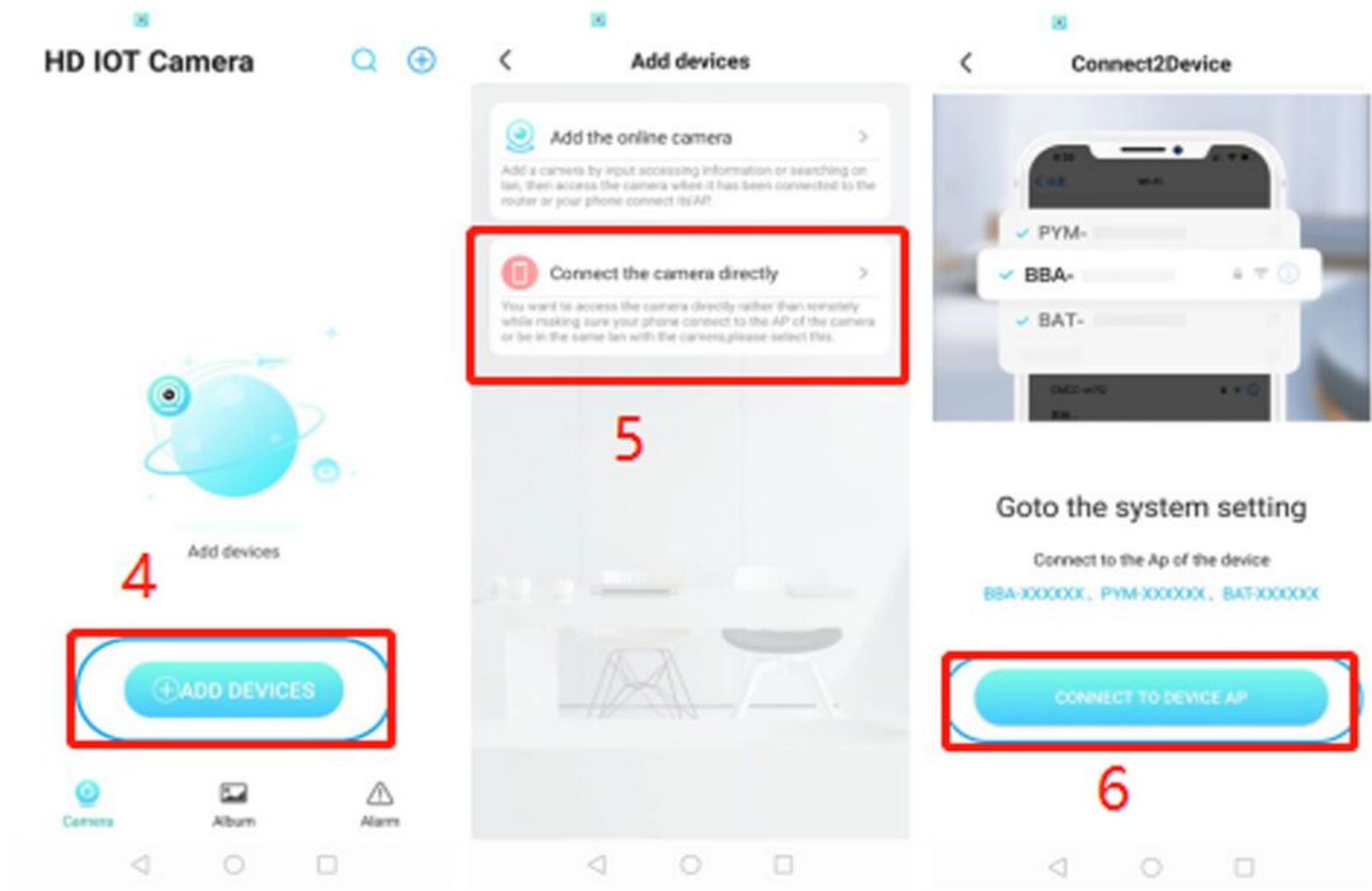


Scan QR code to download



Select any ---Download App

Open APP

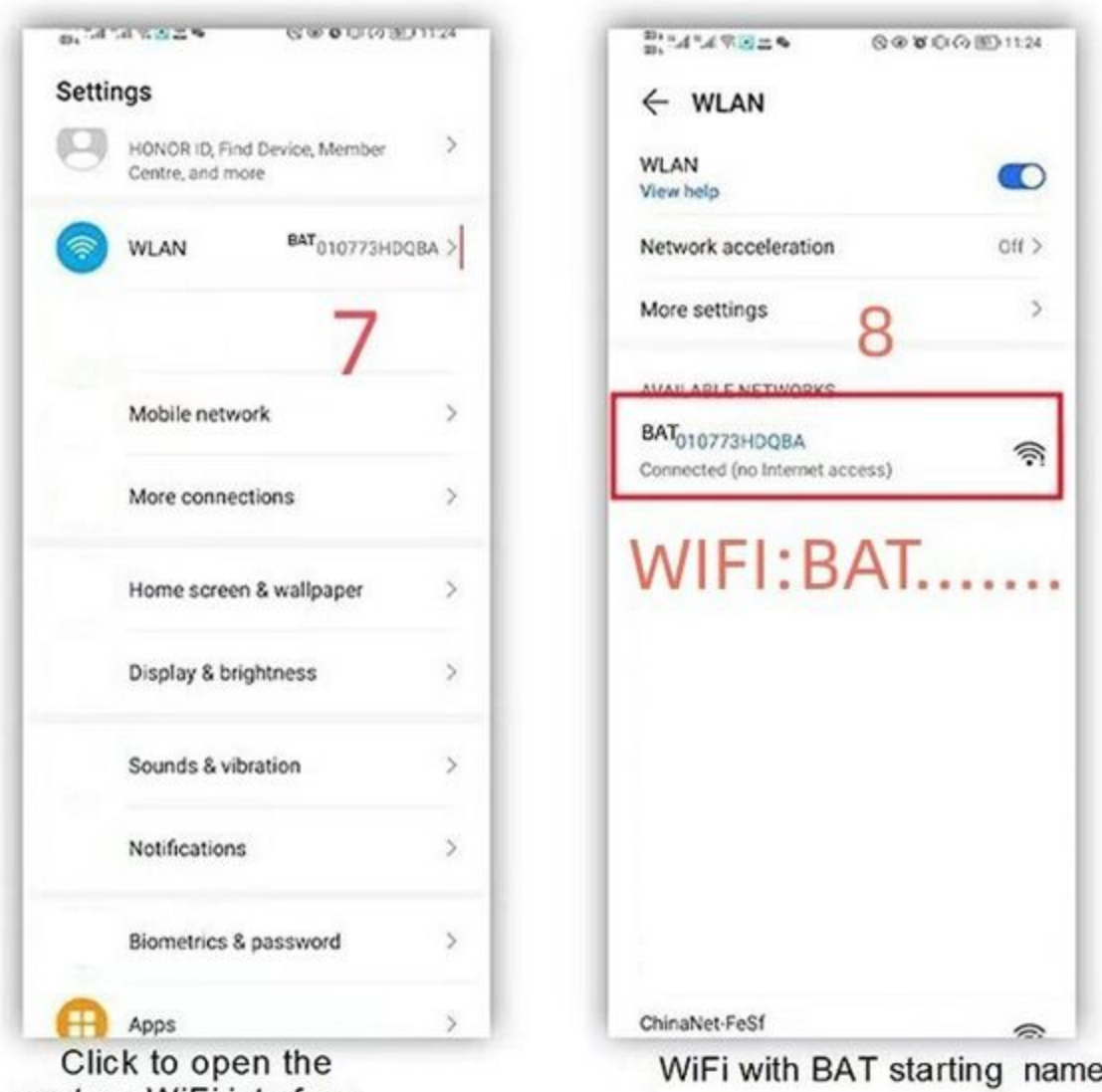


ADD DEVICES

CAMERA DIRECTLY

CONNECT TO DEVICE AP

Connect the machine's own hot spot, the hot spot at the beginning of BAT. Click Connect. After the link is successful, return to APP, as shown in the following figure.



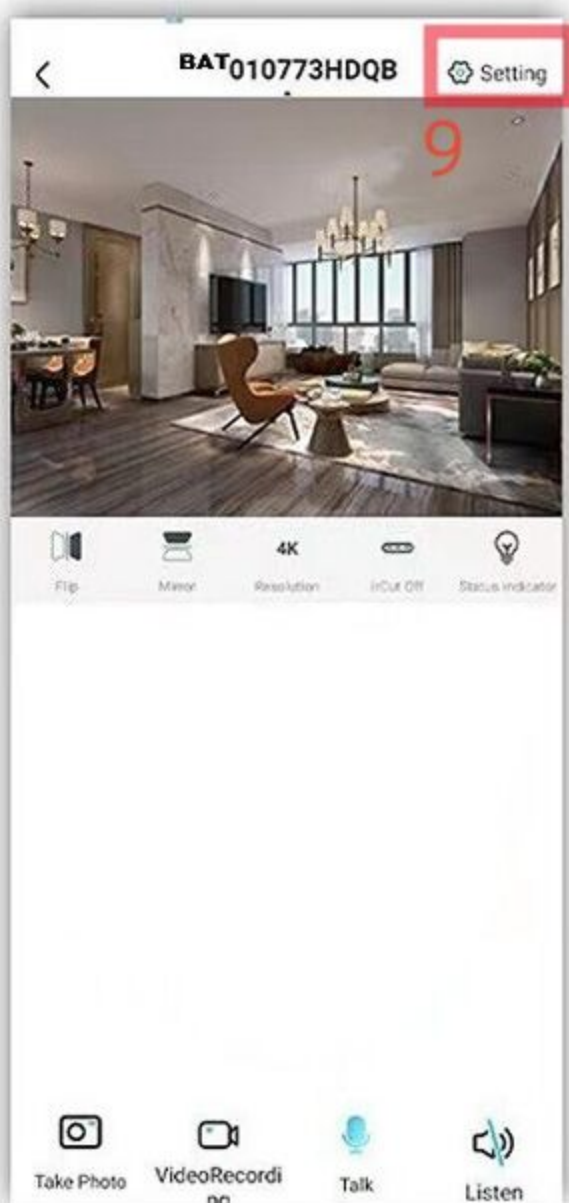
Click to open the system WIFI interface

WIFI with BAT starting name

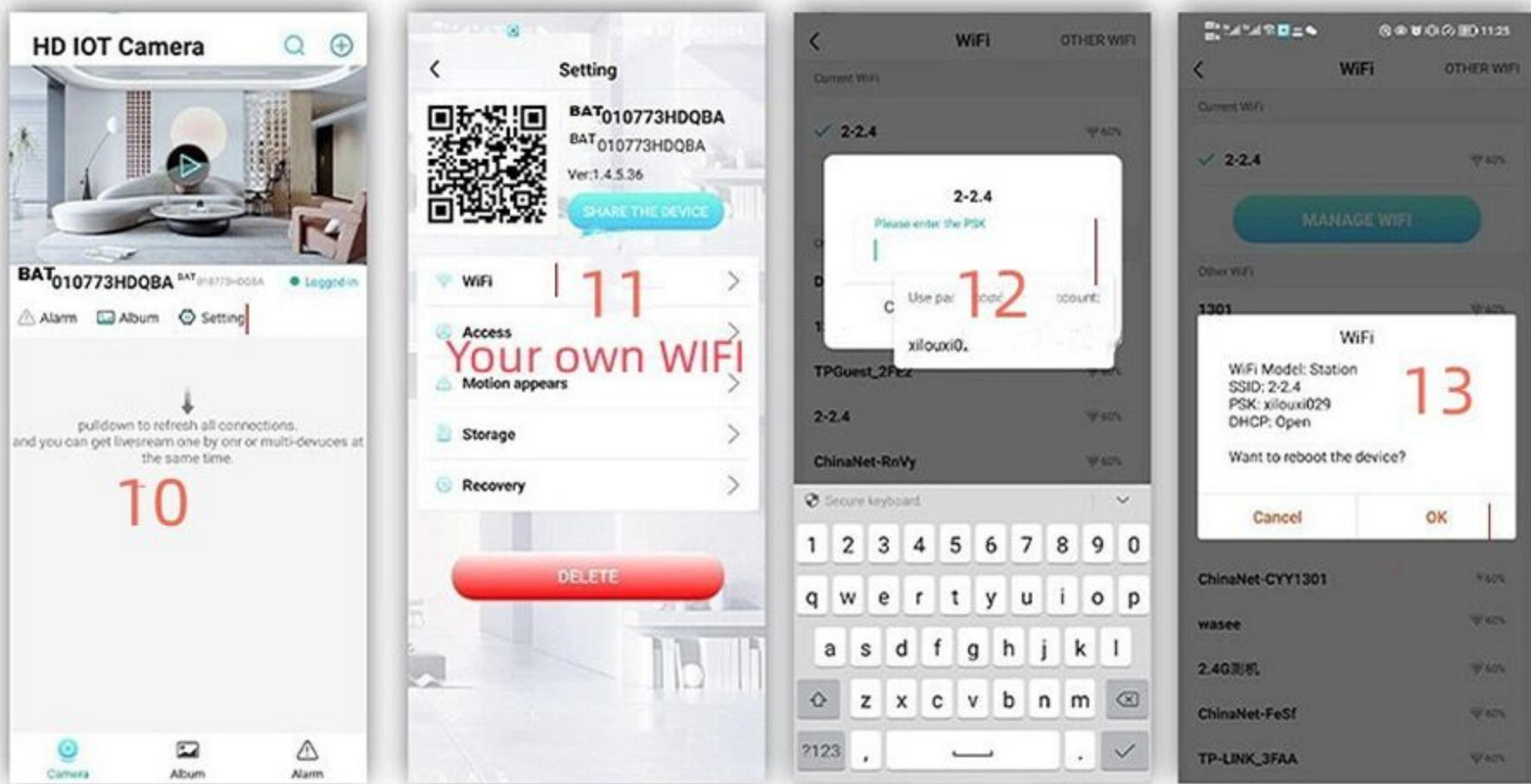
Back to APP

3. No network link has been completed, you can watch the video closely.

Note: You can't remotely monitor the WIFI that links the camera within 4 meters of the camera every time you view it without a network link, With WIFI at home, you can perform the following steps to achieve remote monitoring.



Find your own WIFI account and enter the password correctly, then click OK to return.



Click on the pinion in the figure

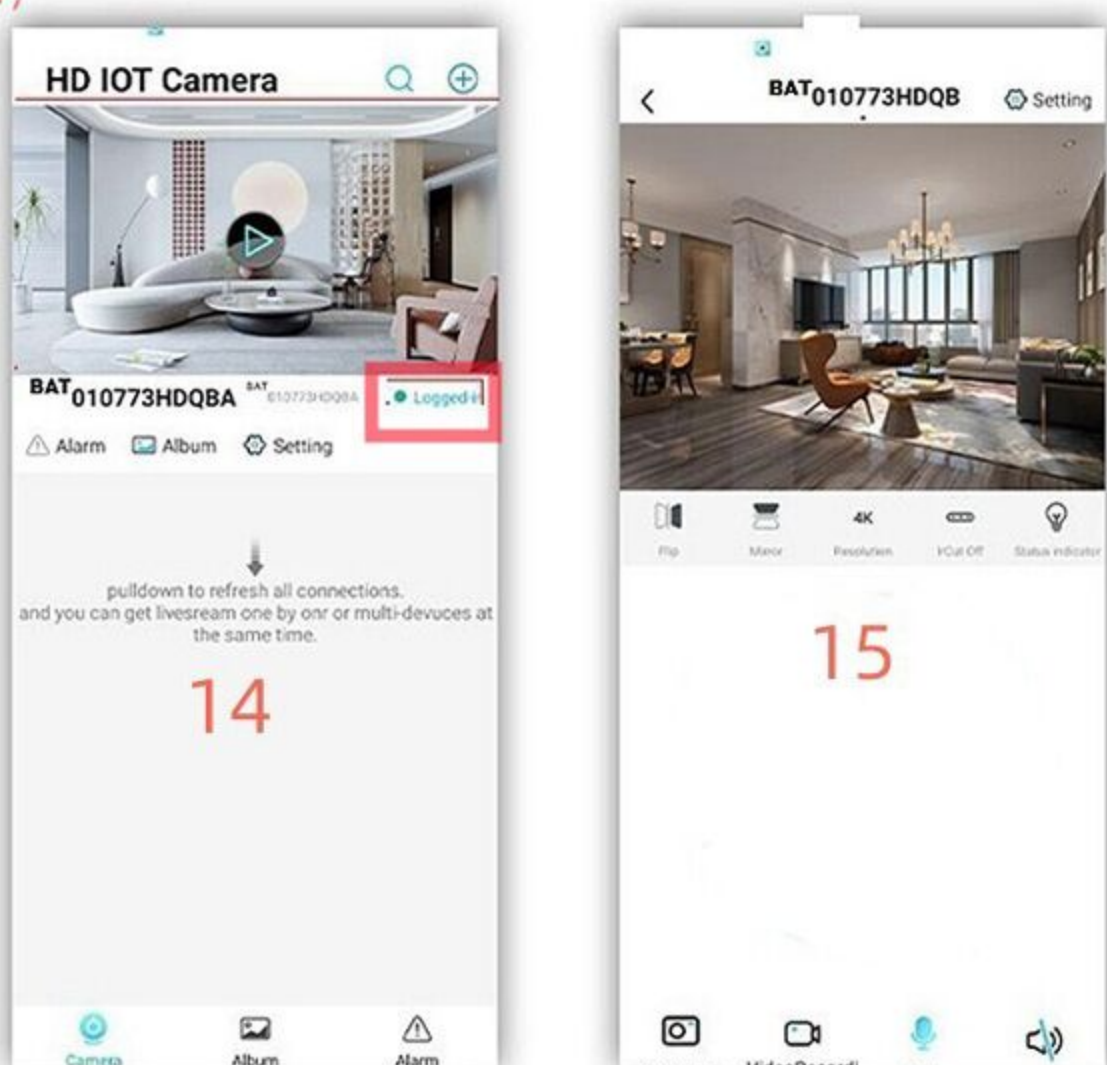
Click WIFI Settings

Find WIFI and enter the password link

Click OK to restart

When you return to the APP, you will see that the reminder link is successful. At this time, you can click the play button to view the screen, and the remote setting is successful.

After successful WIFI setup, restart the APP, ON/OFF indicator is always on



Note: As long as the WIFI password is correct, it can be linked. If it cannot be linked, first forget the router password, verify the password, and then re-enter it.

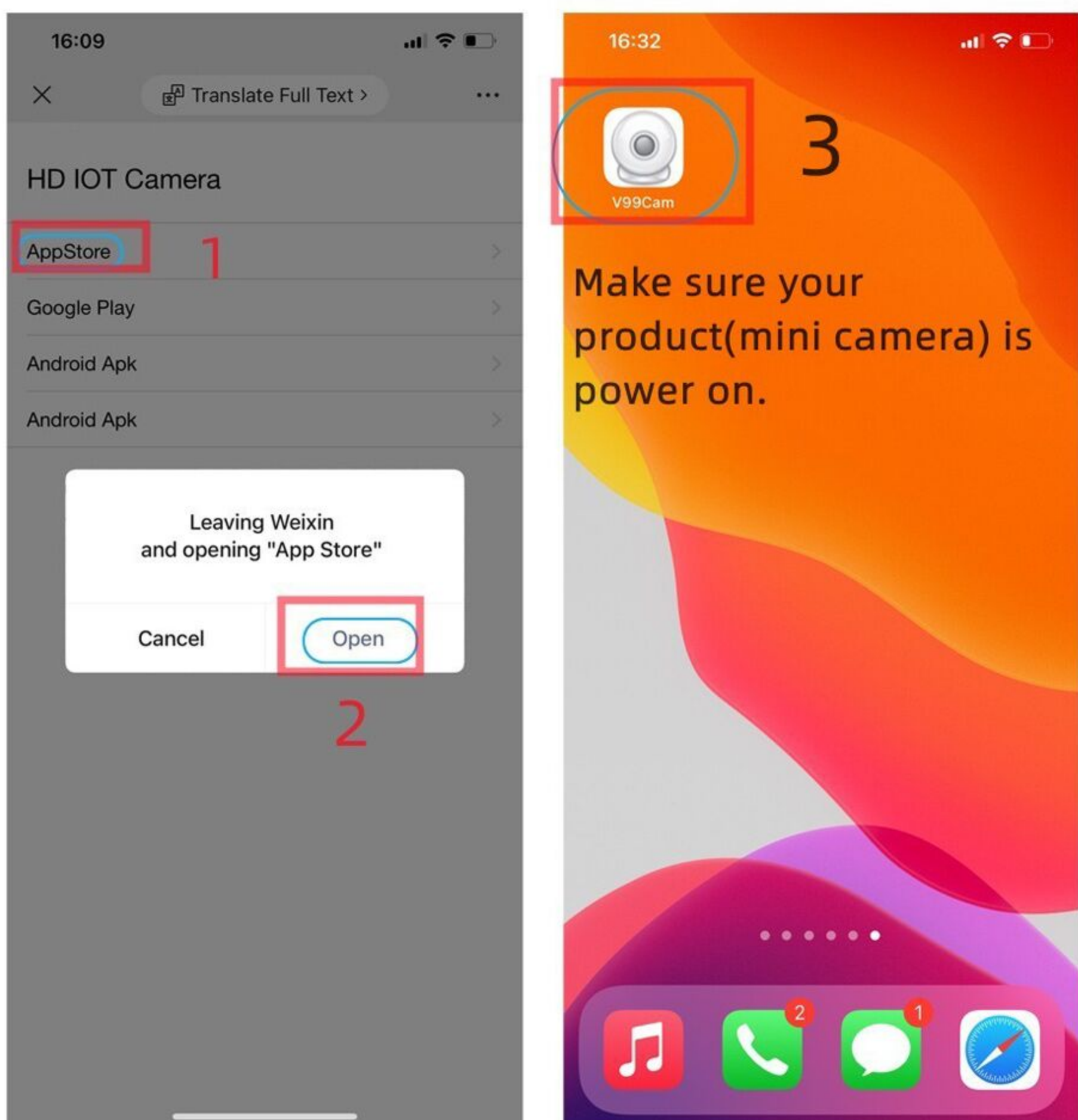
for IOS

V99 Cam-Smart camera

IOS Operating Instructions

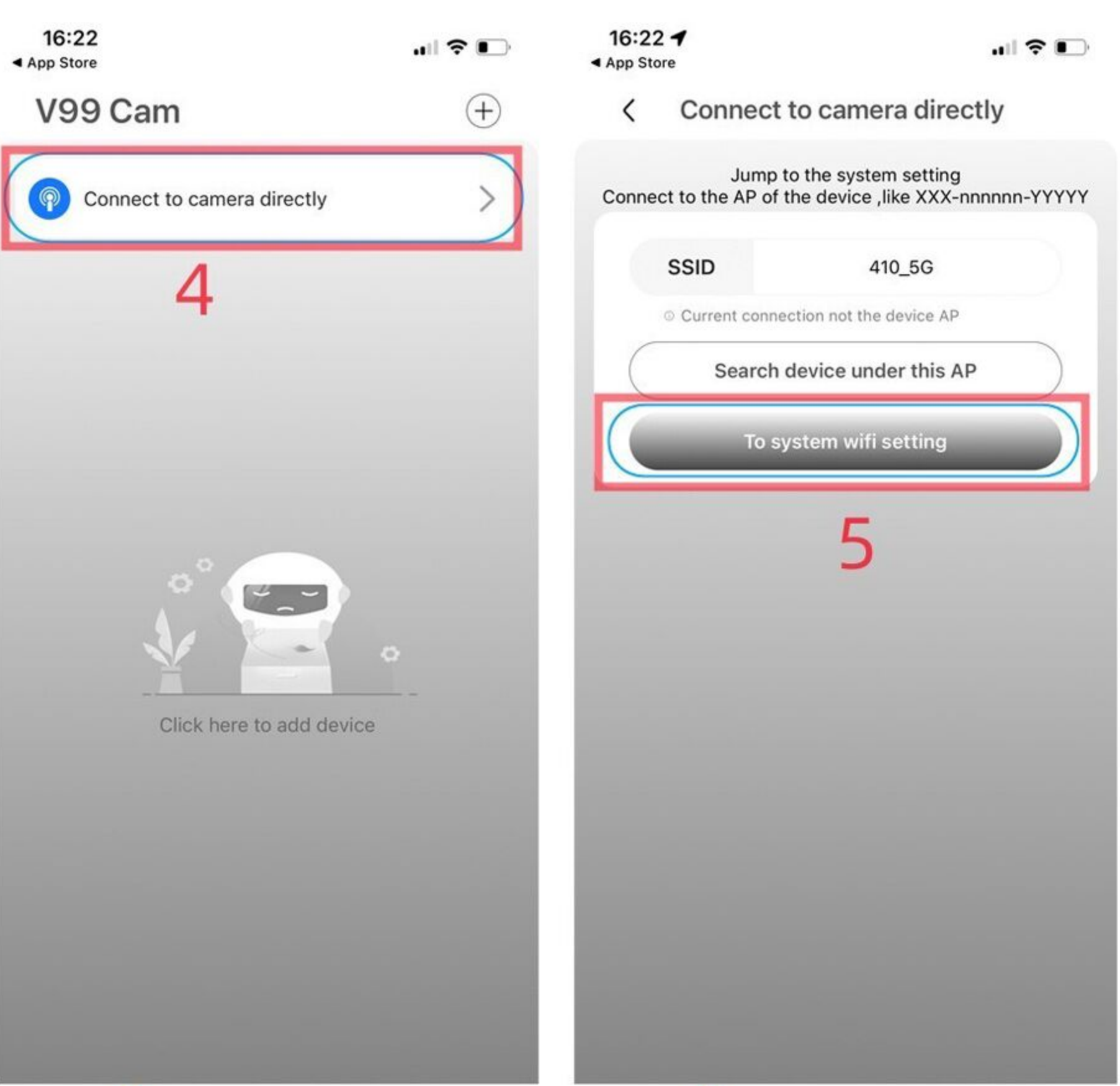


Scan QR code to download



Download App

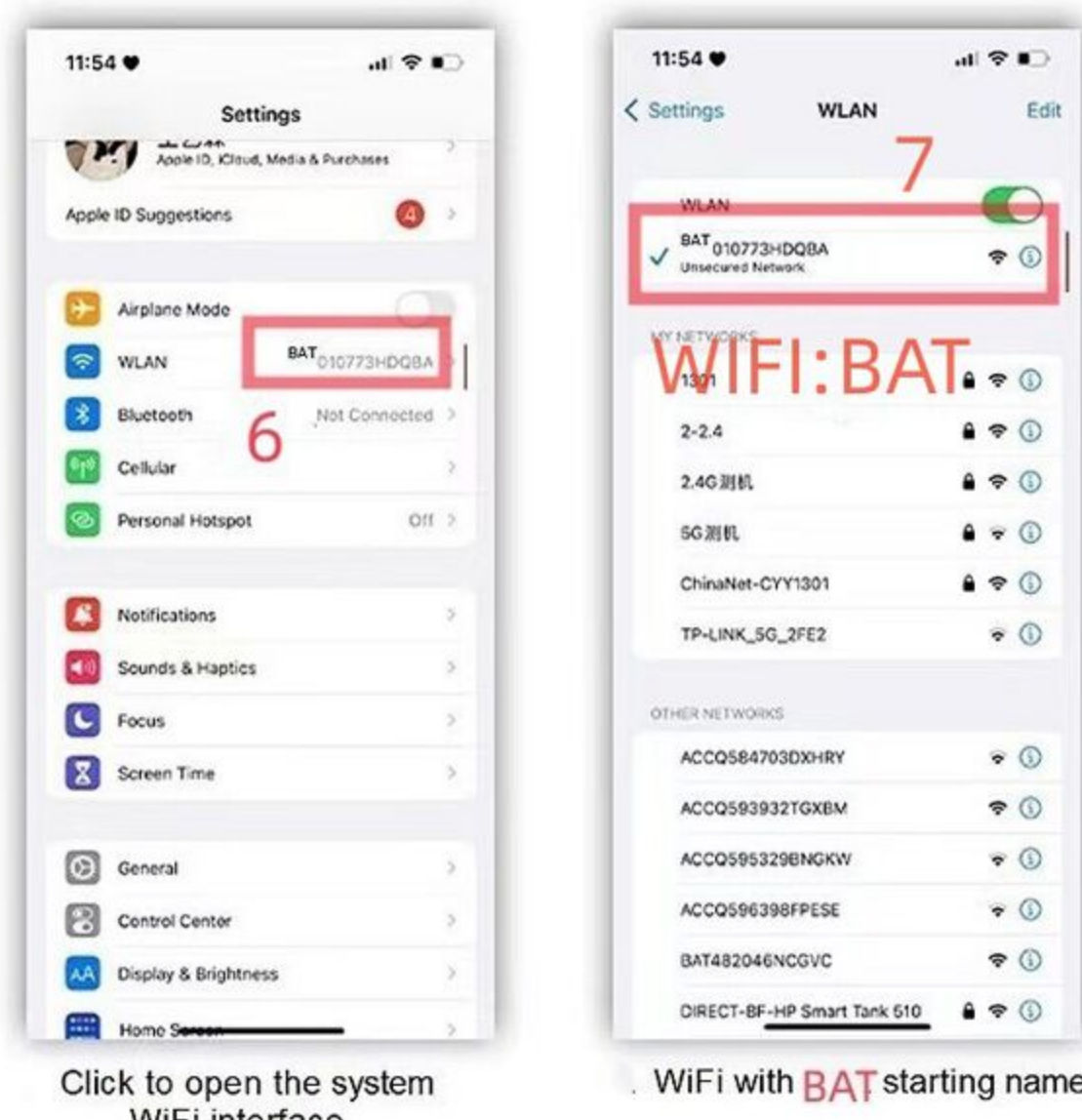
Open APP



Camera directly

Make camera wifi hotspot settings

Connect the machine's own hot spot, the hot spot at the beginning of BAT. Click Connect. After the link is successful, return to APP, as shown in the following figure.



Click to open the system WIFI interface

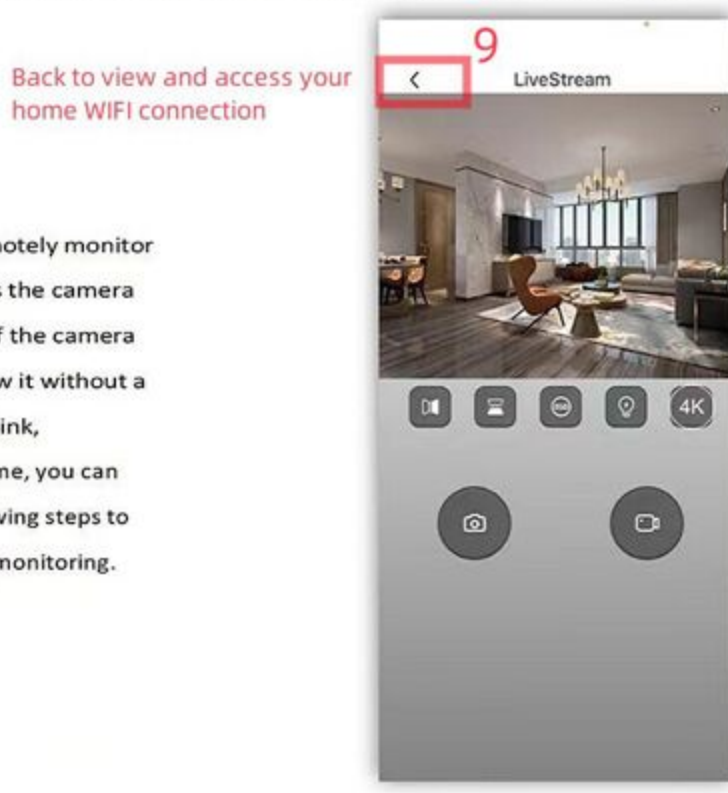
WIFI with BAT starting name

After entering the page, follow the steps below.

No network link has been completed, you can watch the video closely.



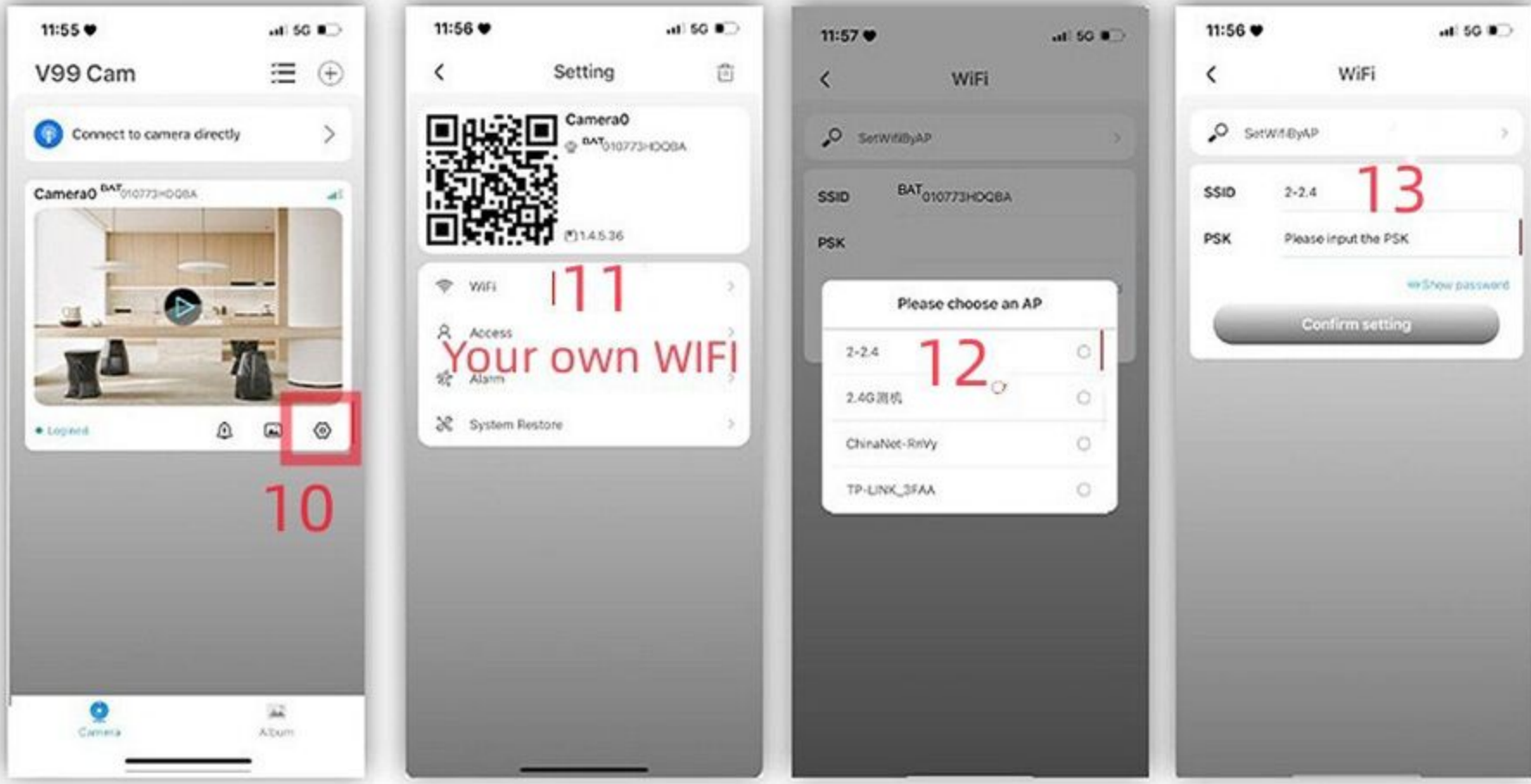
Click the screen to view after the link is successful



Back to view and access your home WIFI connection

Note: You can't remotely monitor the WIFI that links the camera within 4 meters of the camera every time you view it without a network link, With WIFI at home, you can perform the following steps to achieve remote monitoring.

Find your own WIFI account and enter the password correctly, then click OK to return.



Click on the pinion in the figure

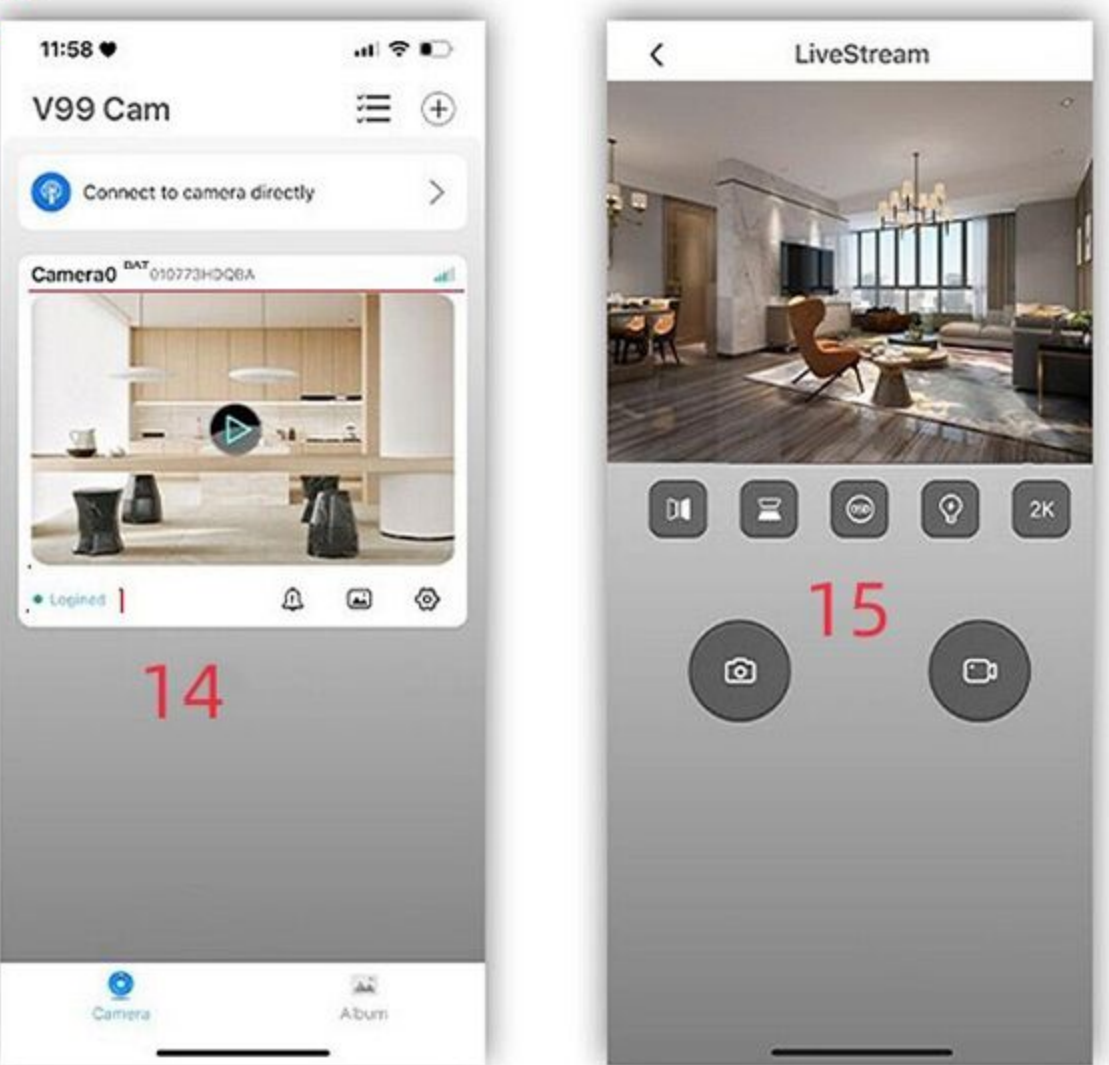
Click WIFI Settings

Link WIFI

Fill in the password

3. When you return to the APP, you will see that the reminder link is successful. At this time, you can click the play button to view the screen, and the remote setting is successful.

After successful WIFI setup, restart the APP, ON/OFF indicator is always on



Note: As long as the WIFI password is correct, it can be linked. If it cannot be linked, first forget the router password, verify the password, and then re-enter it.

FCC Warning

This device complies with part 15 of the FCC rules. Operation is subject to the following two conditions: (1) this device may not cause harmful interference, and (2) this device must accept any interference received, including interference that may cause undesired operation.

Changes or modifications not expressly approved by the party responsible for compliance could void the user's authority to operate the equipment.

NOTE: This equipment has been tested and found to comply with the limits for a Class B digital device, pursuant to part 15 of the FCC Rules. These limits are designed to provide reasonable protection against harmful interference in a residential installation. This equipment generates uses and can radiate radio frequency energy and, if not installed and used in accordance with the instructions, may cause harmful interference to radio communications. However, there is no guarantee that interference will not occur in a particular installation. If this equipment does cause harmful interference to radio or television reception, which can be determined by turning the equipment off and on, the user is encouraged to try to correct the interference by one or more of the following measures:

- Reorient or relocate the receiving antenna.
- Increase the separation between the equipment and receiver.
- Connect the equipment into an outlet on a circuit different from that to which the receiver is connected.
- Consult the dealer or an experienced radio/TV technician for help.

Radiation Exposure Statement

This equipment complies with FCC radiation exposure limits set forth for an uncontrolled environment. This equipment should be installed and operated with minimum distance 20cm between the radiator and your body.