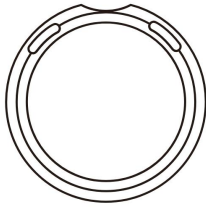


Portable Locator Device



Smart Finders



User Guide

Tips: If you purchased a tag with a case, please take the tag out of the case and pair it with your iOS device before placing it back into the case for use.

Model: TAGC

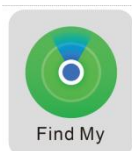
How to Pair

Note: Ensure you are using the latest version of the iOS system and allow notifications and location access to enable all features.

1.1 Turn on Bluetooth on iPhone and connect to Internet.

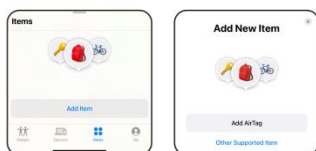
1.2 Press the side button on the finder and listen for one beep to indicate it is powered on.

1.3 Open the 'Find My' app, as shown in Figure 1.



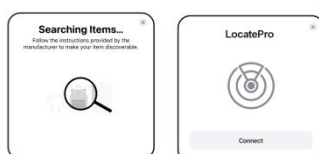
(Figure 1)

1.4 In the 'Find My' app, click on Add Item → Other Supported Items, as shown in Figure 2.



(Figure 2)

1.5 Click Connect, as shown in Figure 3.



(Figure 3)

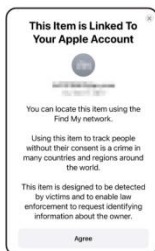
1.6 Name your LocatePro and click Continue, as shown in Figure 4.



(Figure 4)

1.7 Select an emoji for your LocatePro.

1.8 Click Continue, then click “Agree” (Figure 5) to link your Apple Account. Finally click “Finish” to complete the set up.



(Figure 5)

How to Replace The Battery

Notched area

Locate the notched area on the thicker side of the product (refer to the image) and gently pry it open with your fingers.

Additional Tips

3.1 To switch from active mode to disabled mode (Airplane mode), simply remove the battery.

3.2 To switch from disabled mode (Airplane mode) to working mode, reinstall the battery. The LocatePro will successfully pair after this.

3.3 Press and hold the button until you hear one prompt tone, followed by two consecutive prompt tones, and then three consecutive indicator tones. Continue holding for 5 seconds. When you hear a long indicator tone, release the button to restore the device to its factory settings. (The reset function is designed for situations where the device becomes slow after extended use.)

3.4 To remove the LocatePro from your Apple devices, open the Find My app, select Items, find the device, and scroll down to click on Remove This Device

WARNING

Do Not Swallow the Battery: Risk of chemical burns.

Choking Hazard: The LocatePro, battery compartment door, battery, and case can pose choking risks. Keep out of reach of small children.

Medical Device Interference: The LocatePro emits electromagnetic fields and contains magnets, which may interfere with pacemakers, defibrillators, or other medical devices. Maintain a safe distance and consult your doctor if needed. Discontinue use if interference occurs.

Care Instructions: Discoloration with use is normal. Clean with a soft, dry cloth. Avoid using liquids or harsh cleaners.

Handling and Cleaning Instructions

- Avoid applying pressure with sharp objects on the rubber seal or battery terminal contacts inside the device.
- Keep moisture out of device openings and do not use aerosol sprays, solvents, or abrasive materials for cleaning.

Legal Notice

- The "Works with Apple" badge signifies that the product is designed to work with the specified Apple technology and certified to meet Apple Find My network standards. Apple is not responsible for the operation, use, or regulatory compliance of this product.
- Apple, Apple Find My, Apple Watch, Find My, iPhone, iPad, iPadOS, Mac, macOS, and watchOS are trademarks of Apple Inc., registered in the U.S and other countries.
- iOS is a trademark or registered trademark of Cisco in the U.S. and other countries, used under license.

FCC Caution:

This device complies with part 15 of the FCC Rules. Operation is subject to the following two conditions: (1) This device may not cause harmful interference, and (2) this device must accept any interference received, including interference that may cause undesired operation.

Any changes or modifications not expressly approved by the party responsible for compliance could void the user's authority to operate the equipment.

NOTE: This equipment has been tested and found to comply with the limits for a Class B digital device, pursuant to Part 15 of the FCC Rules. These limits are designed to provide reasonable protection against harmful interference in a residential installation. This equipment generates, uses and can radiate radio frequency energy and, if not installed and used in accordance with the instructions, may cause harmful interference to radio communications. However, there is no guarantee that interference will not occur in a particular installation.

If this equipment does cause harmful interference to radio or television reception, which can be determined by turning the equipment off and on, the user is encouraged to try to correct the interference by one or more of the following measures:

- Reorient or relocate the receiving antenna.
- Increase the separation between the equipment and receiver.
- Connect the equipment into an outlet on a circuit different from that to which the receiver is connected.
- Consult the dealer or an experienced radio/TV technician for help.

The device has been evaluated to meet general RF exposure requirement. The device can be used in portable exposure condition without restriction.

FCC ID: 2A9GG-TAGC