

WF311-喂水器-中性说明书

尺寸：80x140mm

材质&工艺：128g铜版纸, 骑马钉

印刷：彩色印刷

封面封底朝外

USER MANUAL

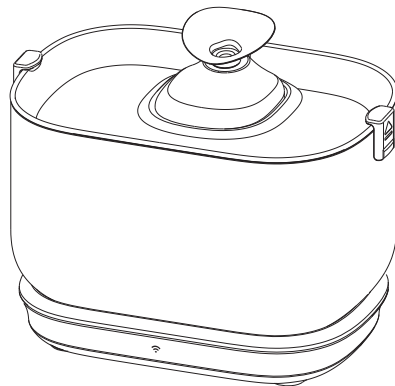
Battery-operated Automatic Pet Water Fountain

Model: WF311
Made in China

WF311_V2.0



This device complies with Part 15 of the FCC Rules. Operation is subject to the following two conditions: (1) this device may not cause harmful interference, and (2) this device must accept any interference received, including interference that may cause undesired operation.



Before using the product, please read this manual thoroughly and retain it for future reference.

CONTENTS

SAFETY PRECAUTIONS	01
PRODUCT OVERVIEW	05
WORKING MODE INTRODUCTION	07
HOW TO USE	08
INDICATORS AND BUTTONS OVERVIEW	13
HOW TO BIND APP	15
BATTERY PCAK	19
CARE INSTRUCTIONS	20
TROUBLESHOOTING	21
SPECIFICATIONS	22

SAFETY PRECAUTIONS

! Warning

- Dispose of all packaging materials properly. Keep the polybags away from children and pets as these bags could cause suffocation.
- Do NOT allow children to play with, in or around the pet water fountain.
- To avoid injury, please keep close supervision when the appliance is used near children.
- Do NOT use the water fountain with pets not able to reach the water tray or with any physical disability.
- Do NOT place any foreign object in the water tank.
- Do NOT disassemble the pet fountain other than components as instructed in this User Manual.
- Do NOT use the pet fountain for anything other than its intended use.
- Only use attachments recommended or sold by the manufacturer. The use of attachments not recommended or sold by the manufacturer may cause an unsafe condition. Do NOT modify the pet fountain.
- Do NOT operate any appliance if the unit is malfunctioning or has been damaged. Do not attempt repairs on the device yourself. Contact our customer service immediately for further instructions.
- Be sure to disconnect the power supply for safety when the appliance is not in use.
- Please disconnect the power supply before maintaining and cleaning the machine.
- Always unplug the appliance when not in use; or before putting on or taking off parts and before cleaning.
- The power adapter and wire plug must not be flooded during cleaning.

- This product is for indoor use only.
- This product is not allowed to run without water.
- Never pull the electrical power cord to remove the plug from the wall outlet.
- If the plug of this device gets wet, turn off the electricity of that wall outlet. Do NOT attempt to unplug.
- Check the device after installation. Do NOT plug in if there is water on the contact points or plug.
- To avoid tripping, always position the power cord out of the way of foot traffic.
- Do not use the appliance in the bathroom.
- Replace the filter at least once every 2 weeks or when the flow rate has noticeably reduced. For two or more cats, you may need to replace the filters more regularly if it becomes blocked.
- In the whole machine, only the stainless steel part and the non-detachable part connected with it can be put into the dishwasher for cleaning. Do NOT put other parts into the dishwasher, otherwise, there is a risk of deformations.

CAUTION

- Do NOT allow pets to chew on or swallow any parts. If you are concerned about the power cord, purchase a cord conduit (a hard-plastic protector) at any hardware store to protect the power cord.
- If an extension cord is necessary, one unit with a proper rating should be used.
- Do NOT install or store the pet water fountain where it will be exposed to weather or temperatures below 0°C / 40°F.

- Read and observe all important notices listed on the pet water fountain and in the packaging.

This device complies with part 15 of the FCC Rules.

Operation is subject to the following two conditions:

(1) this device may not cause harmful interference, and

(2) this device must accept any interference received , including interference that may cause undesired operation .

Changes or modifications to this unit not expressly approved by the party responsible for compliance could void the user's authority to operate the equipment.

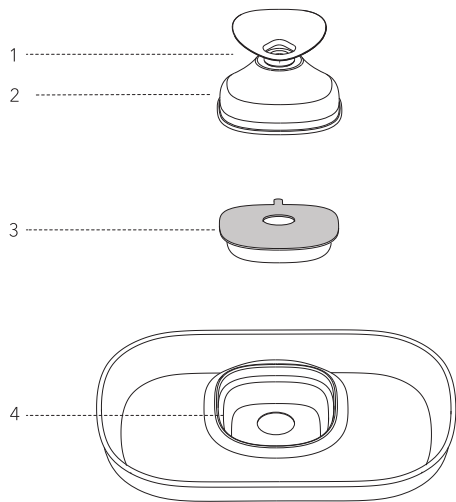
NOTE:

This equipment has been tested and found to comply with the limits for a class B digital device, pursuant to part 15 of the FCC Rules. These limits are designed to provide reasonable protection against harmful interference in a residential installation. This equipment generates, uses and can radiate radio frequency energy and, if not installed and used in accordance with the instructions, may cause harmful interference to radio communications. However, there is no guarantee that interference will not occur in a particular installation. If this equipment does cause harmful interference to radio or television reception, which can be determined by turning the equipment off and on, the user is encouraged to try to correct the interference by one or more of the following measures:

- Reorient or relocate the receiving antenna .
- Increase the separation between the equipment and receiver.
- Connect the equipment into an outlet on a circuit different from that to which the receiver is connected .
- Consult the dealer or an experienced radio/TV technician for help.

This device and its antenna(s) must not be co-located or operation in conjunction with any other antenna or transmitter.

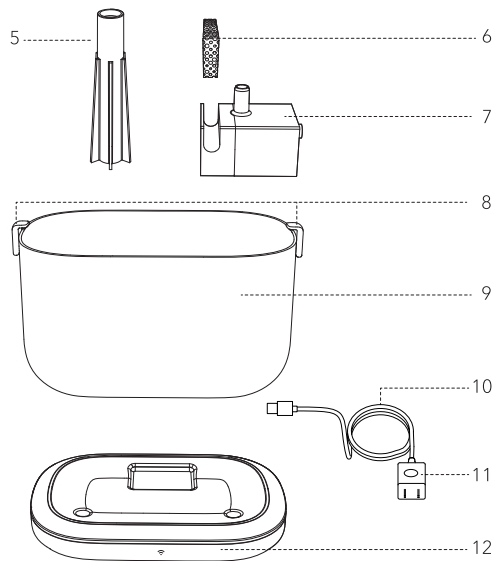
PRODUCT OVERVIEW



1. Spout
2. Lid

3. Filter
4. Stainless Steel Water Tray

Warning: Components 1 and 2 are integrated and cannot be detached.



5. Water Pipe
6. Foam Filter
7. Wireless Water Pump
8. Snap Lids

9. Water Tank
10. Power Cord
11. Power Adapter
12. Tank Base

Warning: Components 8 and 9 are integrated and cannot be detached.

WORKING MODE INTRODUCTION

Power supply mode:

1. Use of external power supply: the external power cord is required during use, which is suitable for use in areas with power sockets.

2. Battery-operated use: there is a built-in rechargeable battery, which can be used without plugging in. It is suitable for indoor areas without power sockets.

Note: when used for the first time, it needs to be fully charged before use. If you need to use it immediately you can connect the external power cord, charge the water fountain while working, and then unplug it when it is fully charged.

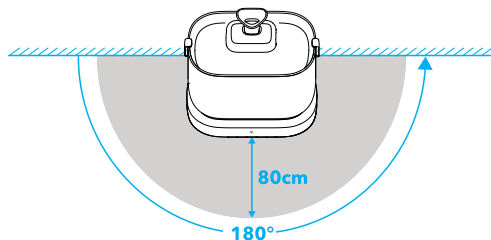
Water outlet mode:

1. Normal Mode: 24 hours continuous water outlet.

2. Induction Mode :

1) The water fountain has a built-in sensor, and when the pet activity is detected within the sensing range, it will automatically give water for 30 seconds.

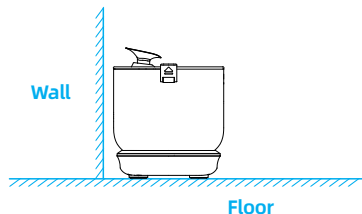
2) Induction Angle: 180° (The sensing distance between the left and right sides gradually decreases)



3) Sensing range (for pets): up to 80cm on three sides.

Note:

The back of the water fountain cannot sense pets, so it is necessary to use the back of the product against the wall to avoid affecting pets drinking water.



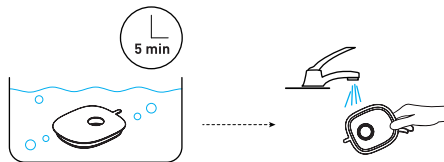
HOW TO USE

1. Soak the filter in a clean bowl for 5 minutes, then rinse the filter thoroughly with tap water.

Notes:

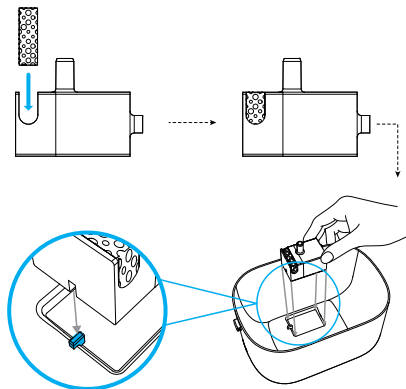
1) The filter must be fully soaked before the fountain is turned on; otherwise, the water may not flow through the filter smoothly and cause spillage.

2) Do not soak the filter in the water tank of the fountain in case of any surface dust.

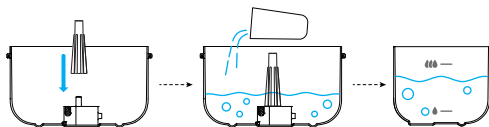


2. Insert the foam filter into the groove of the water pump. Position the pump according to the bottom slot shape.

Note: Please pay attention to aligning the recessed part of the pump with the protruding part of the water tank, otherwise the pump cannot be installed firmly.

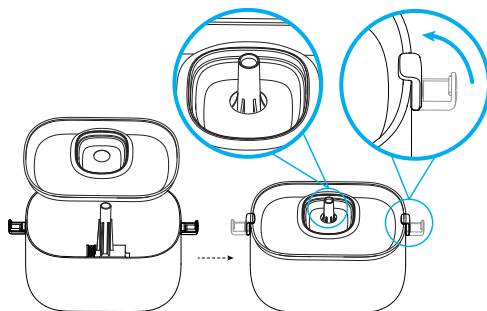


3. Install the silicone pipe on the pump. Add water to the tank.



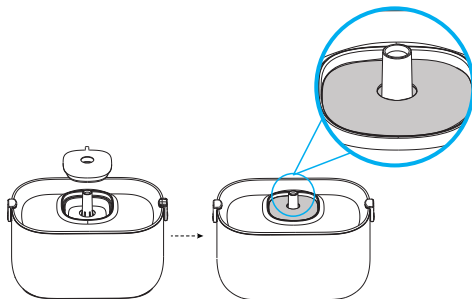
4. Install the water tray and fasten the snap lids.

Note: Pass the water pipe through the hole of the water tray, and the snap lids of the water tray need to be fastened, otherwise it will loosen.

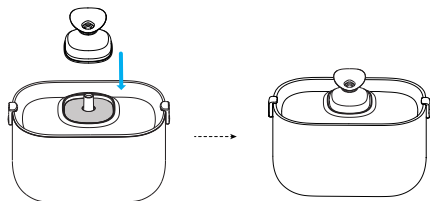


5. Install the soaked filter.

Note: Please make sure the hole of the water pipe passes through the hole of the filter.



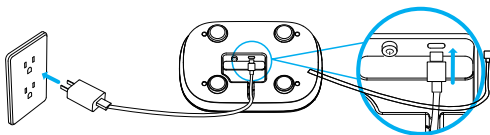
6. Install the filter lid.



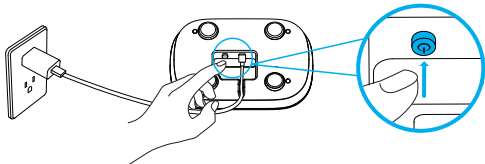
7. Power the water fountain.

1) During external power supply:

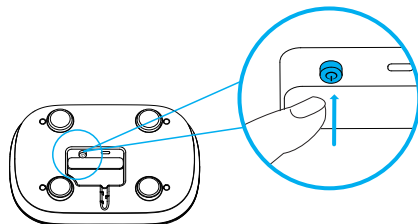
① Connect the power supply to the base.



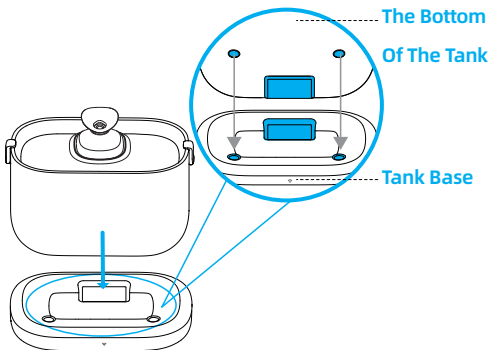
② Turn on the power switch of the base.



2) During Battery-operated use: turn on the power switch of the base directly.

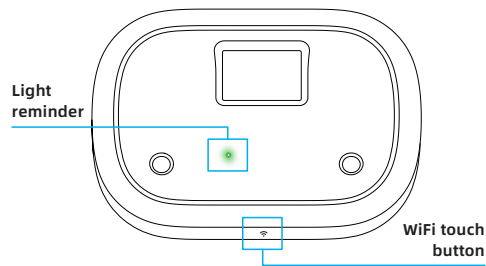


8. Install the water tank with the tank base by aligning the protruding hole of the water tank with the tank base.



INDICATORS AND BUTTONS OVERVIEW

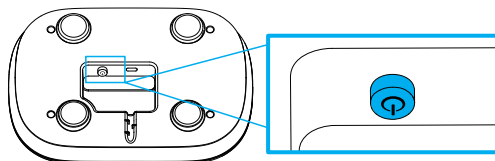
Lighting Part:



WiFi touch button

Short press 5 times, the green light flashes (WiFi resets).

Button Part:



Power Button

Power on:

press the button, the button locked and the product is powered on.

Shut down:

press the button again, the button is unlocked and the product is powered off.

Lamplight Indicator Guide

Feature	LED Color	Instructions status	Description
WiFi display	Green	Flicker	The WiFi is not connected, and the light goes out after the connection is complete.
Low battery	Red	Flicker	Under chargeing.
		Steady on	Fully charged
Low water level	Green	Steady on	The water volume is low, and the light goes out after the water is replenished.

Priority Sequence

The LED indicators will display in the following priority order:

1. WiFi Display.
2. Low Battery.
3. Low Water.

Note: Higher priority indicators will override lower priority ones when multiple conditions are present.

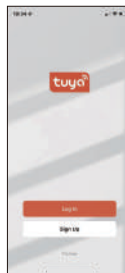
How to bind app

Step 1. App download and installation

Please scan the QR code on the packaging box to download TuyaSmart app and complete the installation.
Or manually look up TuyaSmart App on your phones app store.



b. Login (existing TuyaSmart account)



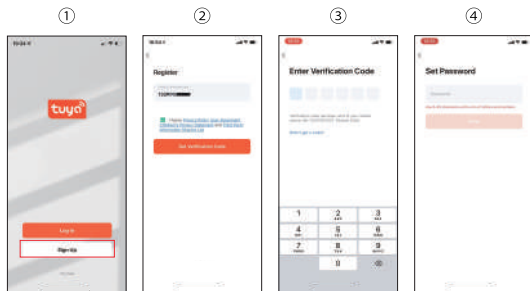
① Please click "log in"



② Enter your login details and tick the app policy

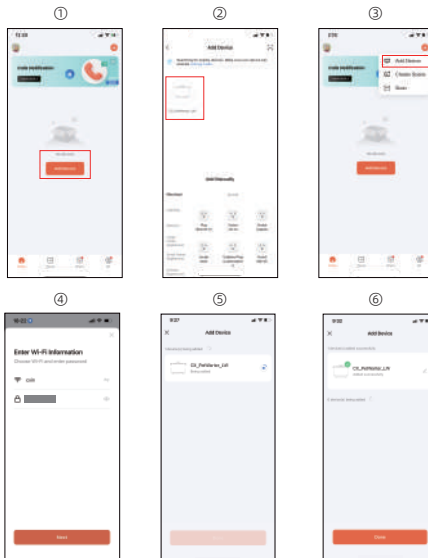
Step 2. App Registration / Login

a. Account registration



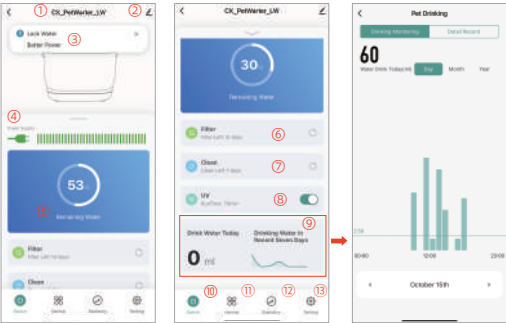
- ① Please open the "TuyaSmart" app and click "Sign up"
- ② Please enter your email address and tick the app policy.
- ③ Please input the verification code sent to your email address.
- ④ Please set up your login password.

Step 3. Pet Fountain Configuration



- ① After you log in, click "add device".
- ② Click "add" after "discovering devices".
- ③ Click "+" to add Pet Water Fountain.
- ④ Enter Wi-Fi information.
- ⑤ Connecting...
- ⑥ Device added successfully.

Step 4: Interface introduction



Main Screen Features

Maintenance Timers

1. Filter Replacement: Set reminder (0-90 days).
2. Cleaning Schedule: Set pump and tank cleaning reminders (0-31 days).
3. Reset Options:
 - After replacing filter, tap to reset timer.
 - After cleaning pump and tank, tap to reset timer.
4. UV Operation: Configure UV running time (0-60 minutes).

Main Screen Features

1. Device Name: Customizable device identifier.
2. Fountain Status: Current operating information.
3. Status Indicators: Low water and battery level notifications.
4. Battery Status: Shows charging progress and current battery level.
5. Water Level: Displays remaining water percentage.
6. Filter Timer: Shows time until filter replacement is needed.
7. Cleaning Reminder: Displays when cleaning maintenance is due.
8. UV Sterilization: Adjustable sterilization control (0-60 minutes).
9. Water Consumption: Daily water usage statistics.
10. App Control (On/Off).
11. Operation Modes: Toggle between normal and smart modes.
12. Statistics: View usage data and trends.
13. Settings: Access device configuration.

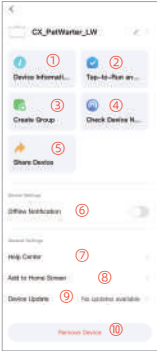
Usage Statistics

The statistics screen provides detailed water consumption data with:

- Daily usage tracking.
- Monthly consumption trends.
- Graphical usage visualization.

Device Management

1. Device Info: View device ID, IP address, MAC, time zone, and signal strength.
2. Quick Access: Configure Tap-to-Run and automation settings.
3. Group Control: Create and manage device groups.
4. Network: Check device connectivity status.
5. Sharing: Share device access with other users.
6. If the device is offline, the APP will send a message after 30 minutes.
7. Support: Access Help Center.
8. Home Screen: Add device to home screen.
9. Updates: Manage device firmware updates.
10. Remove Device:
 - Removes WIFI configuration.
 - Requires new account setup for reconnection.



BATTERY PCK

The water dispenser has a built-in rechargeable battery, please pay attention to the following items in daily use:

1. The built-in battery cannot be disassembled. Please do not disassemble it by yourself to avoid a decline in battery performance or damage to the battery. In serious cases, electrical safety hazards overheating, fire or injury may occur.
2. If the product has not been used for a long time, please charge the product at least once every six months to avoid affecting the service life of the battery.
3. When low power is prompted, please charge the battery as soon as possible to avoid affecting the service life of the battery.
4. Avoid using it at low temperature, otherwise, the battery power will decrease, which is a normal phenomenon.
5. Please use the power adapter in the package to charge the water fountain.
6. DO NOT expose the battery to any direct heat source, including fire or direct sunlight.
7. The battery must be removed from the water fountain before it is scrapped.
8. DO NOT dispose of the water fountain or the Battery Pack in fire, water or other liquids. This is to avoid any explosion hazards.
9. DO NOT dispose of the Li-ion battery in your household waste. Dispose of it by following your local environmental laws and regulations.
10. Do not heat above 140°F [60°C] or incinerate the battery pack. Keep the battery pack away from children.

CARE INSTRUCTIONS

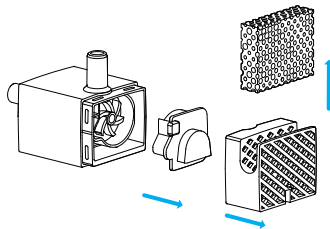
1. Replace the filter and the foam filter at least once every 2 weeks.
2. Clean the pump and fountain at least once every 2 weeks.

How to clean the pump

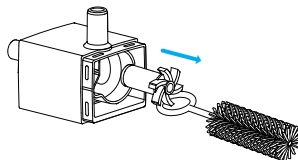
1. Remove the foam filter, pump cover and impeller cover in sequence.

Note:

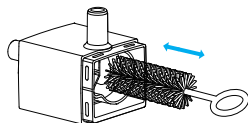
The foam filter affects the water yield very much, so please clean it frequently and replace it in time when cleaning the pump.



2. Remove the impeller by the brush hook.



3. Use the brush to clean the parts with water.



Tip: The brush can also be used to clean the spout. Recommended to clean the spout every 2 weeks.

TROUBLESHOOTING

Problem	Solution
Water keeps spilling out of the water tray	The filter may not be fully soaked. Please soak the filter in a clean bowl(not in the water tank) for 5 minutes before the first use.
The pump stops working.	1) Fill in water between MIN and MAX. The pump will fail if it runs dry. 2) Clean the pump, water tank, and drinking basin.
How often should I change the filter before first use?	Please replace the filter at least once every 2 weeks.
Why do I need to soak the filter before first use?	The filters absorb more water(and therefore clean more water) when they're wet and expanded. Soaking the filter removes particulate matter that may have settled on the filter.
Water output speed slows down.	1) For the first use(or reuse after long-time storage), the water pump needs to discharge air, it's normal if the water output speed slows down.

Problem	Solution
Water output speed slows down.	2) It is dirt in the pump, please refer to " How to Clean the Pump" in the manual to clean it.
No water after installation	This product adopts a wireless pump that is induction powered. Please ensure the power supply is properly connected, and the water tank, base and water pump are installed correctly. Please refer to the "How to Use" section of the manual.
Black residues and dirt appear in the water tank and on the filter element	1)Please ensure that clean water sources are replaced regularly. 2)Please make sure to soak and wash the filter element in advance.

SPECIFICATION

Model	WF311
Power Adapter	Input: 100-240V 50/60Hz Output: 5V/1A
Material	ABS, Stainless SUS304
Water Tank Capacity	2.5L
Dimensions	232.9X157.8X185.8mm
Net Weight	920g

FCC Caution:

This device complies with part 15 of the FCC Rules. Operation is subject to the following two conditions: (1) this device may not cause harmful interference, and (2) this device must accept any interference received, including interference that may cause undesired operation.

Any changes or modifications not expressly approved by the party responsible for compliance could void the user's authority to operate the equipment.

NOTE: This equipment has been tested and found to comply with the limits for a Class B digital device, pursuant to Part 15 of the FCC Rules. These limits are designed to provide reasonable protection against harmful interference in a residential installation. This equipment generates, uses and can radiate radio frequency energy and, if not installed and used in accordance with the instructions, may cause harmful interference to radio communications. However, there is no guarantee that interference will not occur in a particular installation.

If this equipment does cause harmful interference to radio or television reception, which can be determined by turning the equipment off and on, the user is encouraged to try to correct the interference by one or more of the following measures:

- Reorient or relocate the receiving antenna.
- Increase the separation between the equipment and receiver.
- Connect the equipment into an outlet on a circuit different from that to which the receiver is connected.
- Consult the dealer or an experienced radio/TV technician for help.

To maintain compliance with FCC's RF Exposure guidelines, This equipment should be installed and operated with minimum distance between 20cm the radiator your body: Use only the supplied antenna.