

VibTrefoil

Now, you can boldly explore your Playtime. Thank you for your participation and support.

Support (US/CA): +1 (888) 868-2241

Service Hours: 9:00 AM-10:00 PM Monday to Friday (EST)

Email: support-us@bigshocked.com



User Manual

Product Name

VibTrefoil

Enjoy your playtime



Note: Colors may differ from the image

Customer Support:

support-us@bigshocked.com | +1 (888) 868-2241

Service Hours: 9:00 AM-10:00 PM Monday to Friday (EST)

Welcome to unlock and explore your sweet time!



Discreet
Packaging



Body Safe
Materials



1-Year
Warranty



Free Shipping

* Amazon
Prime Members
Enjoy Free Shipping

Table of Contents

First-Time Use Checklist	1
Discover The JOYHUB App	3
How to Use	4
Connect with The JOYHUB App	5
App Features & Fun	6
Charging Instructions	7
Cleaning & Safety Tips	8
Usage Tips & Best Practices	9
Troubleshooting & Customer Support	11
Warranty & Brand Commitment	12

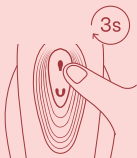
First-Time Use Checklist

**Before you begin,
ensure you've done the following:**



1. Fully charge the device

The indicator light flashes during charging and turns solid when full (approx. 90 min).



2. Press and hold power button for 3 seconds (Short presses won't work)

A quick press won't work — long press is required to turn on/off.

First-Time Use Checklist



3. Test both control sides

Test both control sides

The vibration modes of the main motor and the vibration modes of the two rabbit motors operate independently. Try both buttons.



4. Review safety precautions

Never use while charging. Avoid submersion in water.



5. Want advanced features?

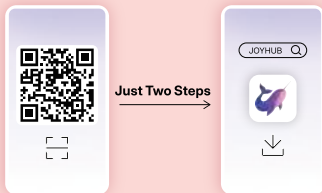
Download the JOYHUB App to unlock remote play, music mode, and more (see next page).

Discover The JOYHUB App

Unlock the full potential of your VibTrefoil with the JOYHUB App.

Enjoy remote control, custom vibration patterns, and more.

📲 *Download now from the iOS App Store, or scan the QR code.*
(Full connection guide on page 5)



Now, you can boldly explore your playtime.

How to Use



● Power Button

Press and hold for 3s to turn on or off
Short press to switch the Vibration modes of the main motor.

● The vibrations of two rabbit ears part (when power on)

Short press to switch the Vibration modes of the two rabbit motors.

Charging Indicator Status

Flashing = Charging

Solid = Fully charged

Off = Device powered off

****Make sure to fully charge the toy before first use.***

If you have any questions, please contact us:



Toll-Free Support (US/CA): +1 (888) 868-2241

Service Hours: 9:00 AM-10:00 PM Monday to Friday (EST)



support-us@bigshocked.com

Connect with The JOYHUB App



1.



Turn on the toy

(Press and hold the power button for 3 seconds until the light turns on).

2.



Open the JOYHUB App

(Make sure wireless connection is enabled on your phone).

3.



Pair the toy

The app will automatically detect the toy. If not, try restarting the toy or refreshing BT in the app.

4.



Start exploring

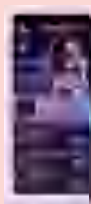
Once connected, enjoy multiple vibration modes, patterns, and remote control options.

Tips for successful connection:

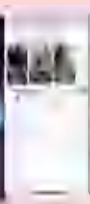
- Fully charge the device before pairing
- Close and reopen the app if BT fails
- Keep the toy powered ON during pairing
- Restart your phone if needed

App Features & Fun

Elevate your VibTrefoil experience with the JOYHUB app – your gateway to next-level pleasure.



Toy games and rankings



Recommended programs and videos



Share and connect in JOYHUB



Chat freely



Mutual control in the room





Pro Tips:

- Explore these features in a private, comfortable space.
- Use JOYHUB to unwind, discover new pleasures, and join the sweet time.
- Note: Features are regularly updated – stay tuned for enhancements!

Charging Instructions



Warnings

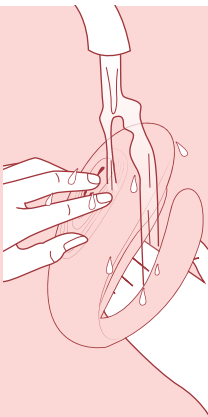
-  Do not use the product while charging
-  **Only use the included charging cable**
-  Ensure the charging port is dry before connecting
-  Recommend using a standard charger



Charging Instructions

- Connect the USB cable to the charging port on the device.
- Plug the USB end into a power adapter or USB port.
- Charging takes approximately 90 minutes.
- While charging, the indicator light will flash.
- When fully charged, the light will stay on.

Cleaning & Safety Tips



• Cleaning Instructions



Clean the product before and after each use



Use warm water and mild soap or a toy cleaner



Avoid prolonged submersion to preserve product lifespan



Dry thoroughly with a soft towel

• Safety Tips



Do not use the product while charging



Keep away from sharp objects or extreme temperatures



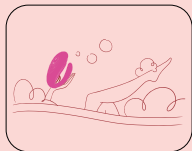
Store in a cool, dry place



This product is intended for personal use only

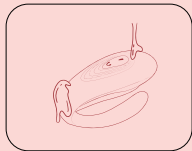
Usage Tips & Best Practices

To enjoy your product safely and comfortably, we recommend the following tips:



Set the mood

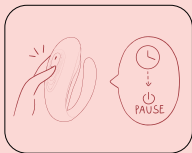
Create a relaxed, private environment.
Use soft lighting or calming music.



Start gently

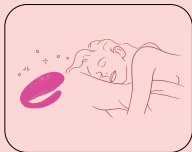
Begin with the lowest intensity settings.
Apply water-based lubricant if needed.

Usage Tips & Best Practices



Know your limits

Keep sessions to a comfortable duration.
Pause immediately if you feel discomfort.



Enjoy your playtime

Take time to rest and relax afterward.
This is your Playtime.

Troubleshooting & Customer Support

Troubleshooting

The toy won't turn on or won't charge

Ensure it's fully charged with the original cable and hold the power button for at least 3 seconds. If still unresponsive, contact support.

Cannot connect to the app

Verify that wireless connection is enabled and the toy is powered on.

If the connection fails, try uninstalling and reinstalling the app.

Weak vibration or stop working suddenly


Switch to a different mode or increase the intensity setting.

If there's still no response, the product may be defective. Contact us for assistance.

Customer Support

We're here for you!

**If you have any issues with the product,
our customer support is here to help — feel free to reach out anytime.**

 Toll-Free Support (US/CA): +1 (888) 868-2241

Service Hours: 9:00 AM-10:00 PM Monday to Friday (EST)

 support-us@bigshocked.com

Warranty & Support Commitment

We support everyone in discovering joy, releasing pressure, and embracing your own play time. Your comfort and satisfaction mean everything to us.

Our Commitment

If your toy has a manufacturing defect within 12 months of purchase, we'll provide a free replacement or full refund.

Warranty Period

12-month replacement warranty

Warranty Coverage

Excludes damage from misuse, improper cleaning, or storage

If you have any questions, please contact us:

 Toll-Free Support (US/CA): +1 (888) 868-2241

Service Hours: 9:00 AM-10:00 PM Monday to Friday (EST)

 support-us@bigshocked.com



FCC Warning:

This equipment has been tested and found to comply with the limits for a Class B digital device, pursuant to part 15 of the FCC Rules. These limits are designed to provide reasonable protection against harmful interference in a residential installation. This equipment generates, uses and can radiate radio frequency energy and, if not installed and used in accordance with the instructions, may cause harmful interference to radio communications. However, there is no guarantee that interference will not occur in a particular installation. If this equipment does cause harmful interference to radio or television reception, which can be determined by turning the equipment off and on, the user is encouraged to try to correct the interference by one or more of the following measures:

- Reorient or relocate the receiving antenna.
- Increase the separation between the equipment and receiver.
- Connect the equipment into an outlet on a circuit different from that to which the receiver is connected.
- Consult the dealer or an experienced radio/TV technician for help.

Caution: Any changes or modifications to this device not explicitly approved by manufacturer could void your authority to operate this equipment.

This device complies with part 15 of the FCC Rules. Operation is subject to the following two conditions:

(1) This device may not cause harmful interference, and (2) this device must accept any interference received, including interference that may cause undesired operation.

This equipment complies with FCC radiation exposure limits set forth for an uncontrolled environment. This equipment should be installed and operated with minimum distance 0cm between the radiator and your body.