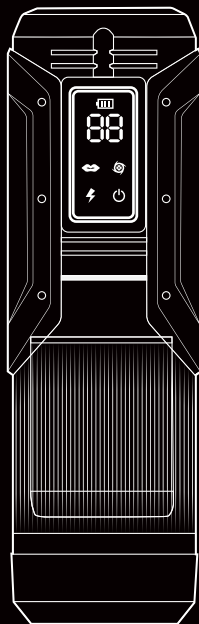


Gatling



Redefine Your Pleasure

Redefine Your Pleasure



Official Support Email:
support@einseo.com



Official Support Hotline:
+1 (888) 897 2005 (US/CA)

Hours: Monday-Friday, 9AM-10PM EST



1 Year Warranty



Premium Materials



Discreet Shipping



LGBTQ+ Friendly

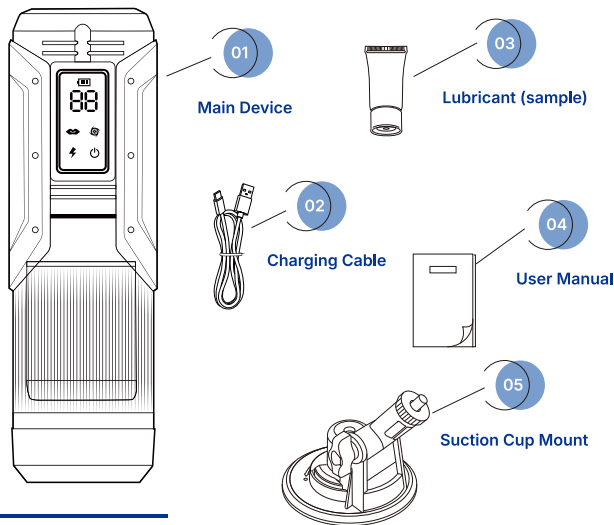


After-Sales Support



Easy to use

Product Packaging	01
First-Time Use Checklist	02
Introducing the JOYHUB App	03
How to Use	04
Pairing with the JOYHUB App	05
Smart Control via the JOYHUB App	06
Charging Instructions	07
Disassembly Guide & Lubricant Guide	08
Using Einseo Gatling	09
Cleaning Instructions	10
Troubleshooting Guide	11
After-Sales & Customer Support	12



Product Basic Parameters:

Color: Black

ABS+TPE : Thermoplastic Elastomer (TPE),
Acrylonitrile Butadiene Styrene (ABS)

Brand: EINSEO

Water Resistance Level: Waterproof

Product Care Instructions: Hand Wash

Package Dimensions: 13.11 x 5.24 x 3.94 inches 2.97 Pound

Batteries: 1 Lithium Ion batteries required. (included)

Modes: 7 Sucking Thrusting Rotating Licking

Base: Adjustable suction for stability



Before You Begin

Please review this checklist before first use to ensure optimal performance.

1. Personal Use Only

This device is intended for personal use only. Do not share with others to prevent cross-contamination.

2. Initial Charging

Fully charge the device for approximately 4 hours before first use. The indicator light flashes while charging and remains solid when fully charged. Use only the provided USB cable. Using third-party chargers may damage the device.

3. Assembly and Function Check

Ensure the inner sleeve and mouthpiece are correctly installed. Press and hold the power button for 2 seconds to turn the device on or off. Test all functions (e.g., thrusting, rotating, sucking) before use.

4. Lubrication

Always apply a water-based lubricant before use. Do not use silicone or oil-based lubricants, as they may damage internal materials. Never operate the device without lubrication.

5. Cleaning and Maintenance

Clean the removable sleeve with warm water and mild soap before and after each use. Do not immerse the main device body in water. Wipe the exterior with a soft, damp cloth only.

6. Safety Precautions

Do not use while charging. Stop if you feel discomfort or notice unusual sounds, smells, or malfunctions. Do not disassemble. Keep away from children and pets. Store in a cool, dry place away from sunlight.

7. App Features

To access additional features such as remote control, music sync, and interactive modes, download the JOYHUB App.

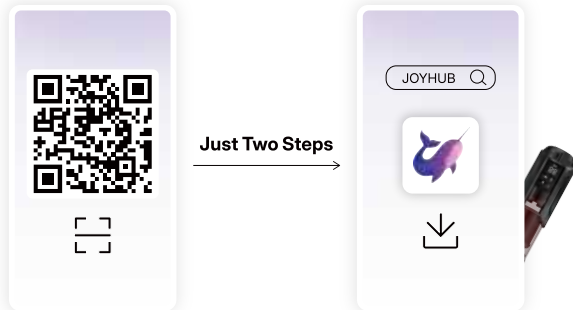


Unlock all the features of Gatling with the JOYHUB App.

Explore remote control, interactive play, and more.

Download now from the iOS App Store, or scan the QR code.

(Full connection guide on page 5)



support@joyhub.net

Connect with the JOYHUB app and discover more.
Let Einseo redefine your pleasure.



Suction Button

- In standby mode, short press to turn on/switch between 7 suction modes.
- press and hold for continuous suction, double press to pause, short press again to resume the previous mode.



Burst Button

When ON:

- Short press to enter/exit MAX mode
- Works in any mode for instant max frequency



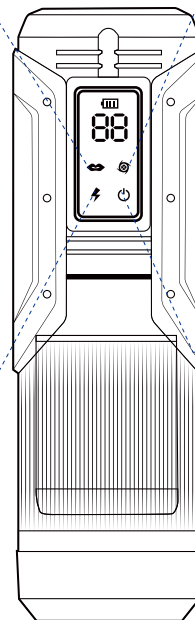
Thrusting & Rotating Button

- In standby mode, short press to turn on/switch between 7 thrusting and rotating modes.
- double press to pause, press and hold to turn off this mode.



Power Button

- Press and hold for 2 seconds to turn on the product and enter standby mode.
- In standby mode, short press to release air, press and hold for another 2 seconds to turn off the product.



Tips:

fully charge before use for best performance

05 Pairing with the JOYHUB App

EINSEO



Turn on the toy

Press and hold the power button for 2 seconds until the light turns on.



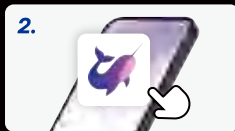
The app will automatically detect the toy.

If not, try restarting the toy or refreshing BT in the app.

💡 Tips:

Tips for successful connection:

- Fully charge the device before pairing.
- Keep the toy powered ON during pairing.
- Close and reopen the app if BT fails.
- Restart your phone if needed.



Open the JOYHUB App

Make sure BT is enabled on your phone.



Once connected

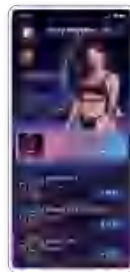
You can now explore multiple sucking modes, patterns, and remote control options.

06 Smart Control via the JOYHUB App

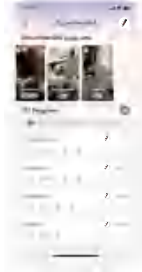
EINSEO

Enjoy more

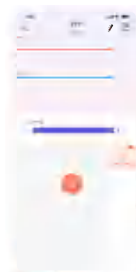
The Einseo Gatling, paired with the JOYHUB app, unlocks a new world of pleasure for you!



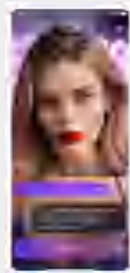
Toy Game and Ranking



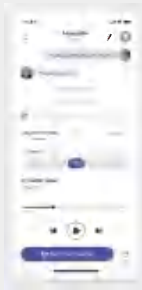
Video Play



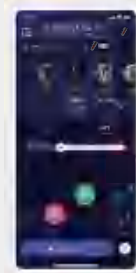
Customizable Modes



AI Visual Interaction



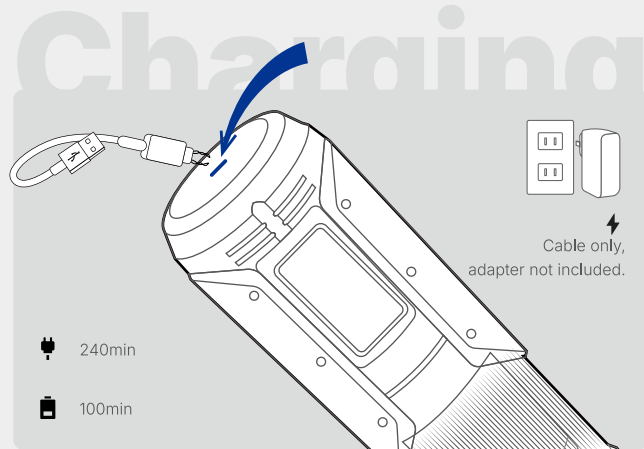
Remote Play



Multiplayer Rooms

Discover more with Joyhub.

Einseo is here to elevate your pleasure experience.



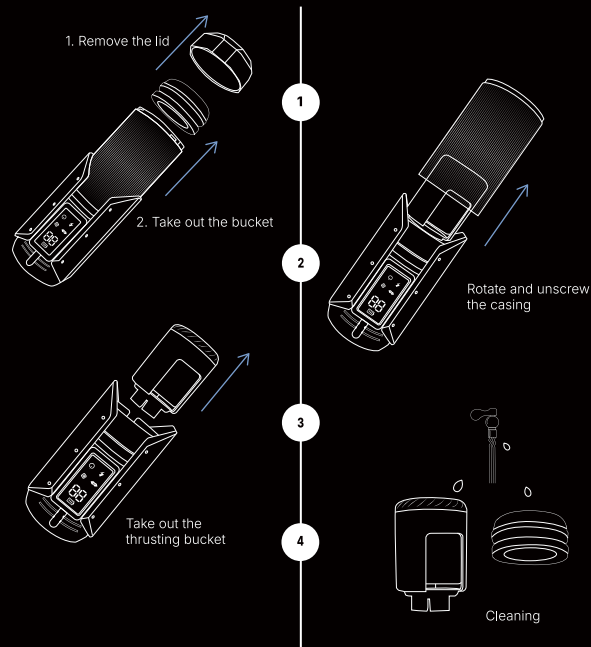
Charging Instructions

- Plug the DC charging cable into the port at the base of the device. Connect the USB end to a 5V power source (adapter or USB port).



Important:

- Do not use while charging.
- Charge at least once every 6 months to maintain battery health.
- If malfunction occurs, recharge fully before use.
- Use only the included cable.
- Ensure the port is dry before charging.

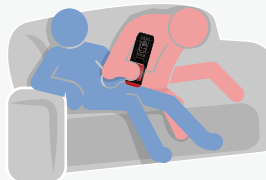


Lubrication Warning: Always use a water-based lubricant before use; Do not use the device dry or with silicone/oil-based lubricants.



Hands-Free

Sticks anywhere, stays steady.



Couple Play

Share intimate moments together.



Long-Distance Fun

Connect and play remotely.

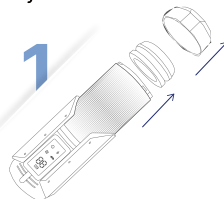


App-Connected Gaming

Interactive, app-powered experience.

Keep your Gatling device clean after each use to ensure hygiene and durability.

1



1. Power off & disassemble

Turn off the device. Remove all parts: outer shell, inner shell, sleeve shell, and soft sleeve.

2

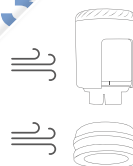


2. Clean the soft sleeve

Rinse with warm water and mild soap or toy cleaner.

Avoid hot water and harsh chemicals.

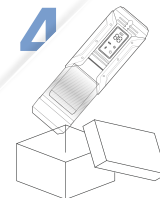
3



3. Dry thoroughly

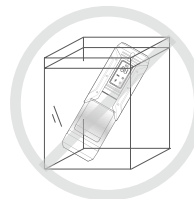
Pat dry with a soft towel and air-dry the soft sleeve completely.

4



4. Reassemble & store

Once dry, put the device back together and store in a cool, dry place away from sunlight.



Do not immerse the electronic unit in water.

Avoid alcohol, bleach, and corrosive cleaners.

Make sure all parts are fully dry to prevent mold and odor.



Won't Turn On or Charge Properly

1. "Make sure the device is charged for at least 30 minutes before first use. During charging, the LED will pulse; once fully charged, it turns solid green."
2. "Use the original USB cable and a 5V-2A adapter. Check that all connections are clean, dry, and secure."
3. "Press and hold the power button for 2-5 seconds to turn on."
4. "If the device still doesn't respond, try a different USB port or adapter. Still not working? Please contact us – we're here to help!"



Still Won't Turn On After Charging

Check that the USB port, cable, and adapter are clean, dry, and firmly connected.



Weak Motor or Low Power

Recharge the device fully before use to restore optimal function.



Program Error or Unresponsive Controls

Fully charge the device before use to ensure maximum performance.



We're here for you! If you have any issues with the product, our customer support is here to help — feel free to reach out anytime.

Limitless Pleasure:

Thank you for choosing Einseo Gatling. We hope this product brings you an unprecedented experience. At Einseo, we are committed to Redefining Your Pleasure, combining advanced technology and craftsmanship to unlock limitless possibilities with every touch.

Our Commitment:

We stand behind the quality of our products. If your toy is defective within 12 months of purchase, we offer a free replacement or full refund.

Warranty:

12-month replacement warranty.

Covers manufacturing defects only (not misuse or damage from improper cleaning or storage).

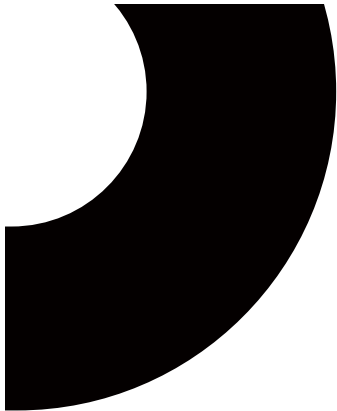


Official Support Email:
support@einseo.com



Official Support Hotline:
+1 (888) 897 2005 (US/CA)

Hours: Monday-Friday, 9AM-10PM EST



EINSEO

Redefine Your Pleasure

from one touch to infinite sensation, let's start it



FCC Warning:

This equipment has been tested and found to comply with the limits for a Class B digital device, pursuant to part 15 of the FCC Rules. These limits are designed to provide reasonable protection against harmful interference in a residential installation. This equipment generates, uses and can radiate radio frequency energy and, if not installed and used in accordance with the instructions, may cause harmful interference to radio communications. However, there is no guarantee that interference will not occur in a particular installation. If this equipment does cause harmful interference to radio or television reception, which can be determined by turning the equipment off and on, the user is encouraged to try to correct the interference by one or more of the following measures:

- Reorient or relocate the receiving antenna.
- Increase the separation between the equipment and receiver.
- Connect the equipment into an outlet on a circuit different from that to which the receiver is connected.
- Consult the dealer or an experienced radio/TV technician for help.

Caution: Any changes or modifications to this device not explicitly approved by manufacturer could void your authority to operate this equipment.

This device complies with part 15 of the FCC Rules. Operation is subject to the following two conditions:

(1) This device may not cause harmful interference, and (2) this device must accept any interference received, including interference that may cause undesired operation.

This equipment complies with FCC radiation exposure limits set forth for an uncontrolled environment. This equipment should be installed and operated with minimum distance 0cm between the radiator and your body.