

# GAME CUP

*Turn on Your Pleasure*

Customer Support:

US/CA: [support@cafatop.com](mailto:support@cafatop.com) +1 (888) 828 4981

UK: [Edenlusttoys@outlook.com](mailto:Edenlusttoys@outlook.com) +44-8085013649

# Turn on Your Pleasure

*GAME CUP*

US/CA:

✉ [support@cafatop.com](mailto:support@cafatop.com)

☎ +1 (888) 828 4981

Hours: Monday-Friday, 9 AM-10 PM EST

UK:

✉ [Edenlusttoys@outlook.com](mailto:Edenlusttoys@outlook.com)

☎ +44-8085013649

Hours: Monday-Friday 2 PM - 12 AM GMT



# GAME CUP

Turn on Your Pleasure

# Turn on Your Pleasure

*GAME CAMP*

US/CA:

✉ [support@cafatop.com](mailto:support@cafatop.com)

☎ +1 (888) 828 4981

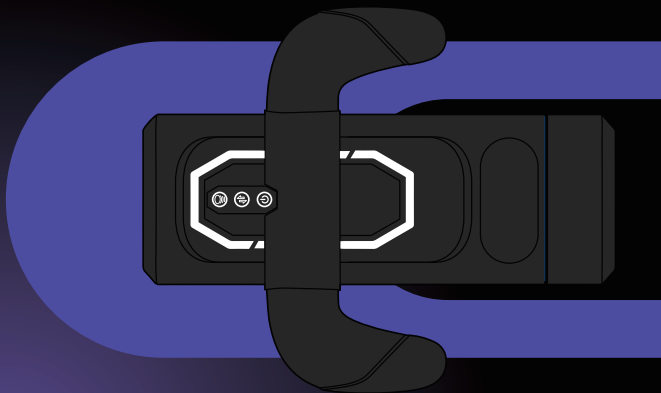
Hours: Monday-Friday, 9 AM-10 PM EST

UK:

✉ [Edenlusttoys@outlook.com](mailto:Edenlusttoys@outlook.com)

☎ +44-8085013649

Hours: Monday-Friday 2 PM - 12 AM GMT



**We guarantee your satisfaction. If there's any issue with your purchase (like can not charge, malfunction, missing accessories or anything else), please do not give negative review, reach out to us by email or phone for a refund or replacement.**



1 Year Warranty



LGBTQ+ Friendly



Premium Materials



After-Sales Support



Discreet Shipping



Easy to Use

## 01 Table of Contents



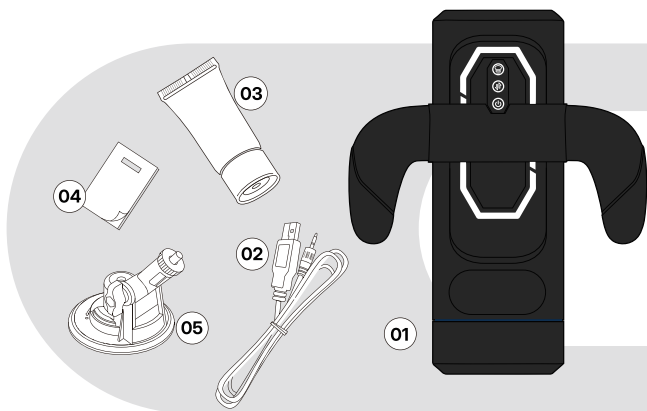
☛	First-Time Use Checklist	02
☛	Introducing the JOYHUB App	04
☛	Pairing with the JOYHUB App	05
☛	Smart Control via the JOYHUB App	06
☛	Using GAME CUP	07
☛	How to Use	08

☛	Charging Instructions	09
☛	Lubricant: Quick Guide	10
☛	Disassembly & Cleaning Guide	11
☛	Cleaning Instructions	12
☛	Specification & Safety Tips	13
☛	Customer Support	14

## 02 First-Time Use Checklist

*What's in the Box*

**Your GAME CUP package includes the following items:**



### **1. Main Device**

The core pleasure unit equipped with thrusting, vibrating and suction functions.

### **2. Charging Cable**

For powering up your device before use.

Cable only, adapter not included.

### **3. Lubricant (sample)**

For a smoother, more comfortable experience.

### **4. User Manual**

Includes setup instructions, usage tips, safety guidelines, and so on.

### **5. Suction Cup Mount**

Allows hands-free use by attaching the device to smooth surfaces.

Adjustable for different angles.

## 03 First-Time Use Checklist

### Before You Begin

To ensure the best experience with your device, please read the following checklist carefully before first use.

#### 1 Fully Charge the Device

Make sure your device is **fully** charged before use.

The indicator light flashes while charging and turns solid when **fully** charged (approximately 180 minutes). For more details, see Charging Instructions on page 9.

#### 2 Test the Power & Functions

Press and hold the power button for 3 seconds to turn the device on/off. A short press **will** not work. Once powered on, check if **all** function buttons (thrusting, vibrating and suction) are responding properly.

For a complete guide, refer to How to Use on page 8.

#### 3 Check Assembly

Ensure that the inner sleeve and mouthpiece are **correctly** installed and **fully** seated inside the device. Improper installation may affect performance or cause damage.

For step-by-step instructions, see Assembly Guide on page 11.

#### 4 Always Use Lubricant

Do not use the device dry.

Always apply a generous amount of water-based lubricant before use to ensure comfort and prevent injury.

For application tips, refer to Lubrication Tips on page 10.

#### 5 Read the Safety Warnings

Do not use while charging.

Do not submerge the device in water.

Review **all** safety precautions to ensure safe and responsible usage.

#### 6 Unlock Advanced Features

Want more fun? Download the JOYHUB App to unlock remote control, music-sync mode, game interaction, and more.

For pairing instructions, see App Features on page 5 and page 6.

## 04 Introducing the JOYHUB App

Unlock all the features of GAME CUP with the JOYHUB App.

# Enjoy remote control, custom patterns, and more.



Download now from the iOS App Store, or scan the QR code.

(Full connection guide on page 6)





## 05 Pairing with the JOYHUB App



1.



### Turn on the toy

Press and hold the power button for 3 seconds until the light turns on.

2.



### Open the JOYHUB App

Make sure BT is enabled on your phone.

3.



### The app will automatically detect the toy.

If not, try restarting the toy or refreshing BT in the app.

4.



### Once connected

You can now explore multiple vibration modes, patterns, and remote control options.

*GAME CHUP*



### Tips for successful connection:

- Fully charge the device before pairing.
- Keep the toy powered ON during pairing.
- Close and reopen the app if BT fails.
- Restart your phone if needed.

## 06 Smart Control via the JOYHUB App

Unlock all the features of GAME CUP with the JOYHUB App.

# Enjoy more GAME CUP with the JOYHUB unlocks a new world of pleasure for you!

Toy games  
and rankings

Share and  
connect in the  
JOYHUB

Mutual control  
in the room

Recommended  
programs and  
videos

Real-time  
interaction

AI Visual  
Interaction

### Tip:

- Explore these features in a private space, with full control.
- BT, AI, waves, games, community... pick your pleasure.

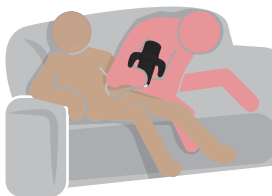
## 07 Using GAME CUP

To ensure the best experience with your device, please read the following checklist carefully before first use:



### Hands-Free

Sticks anywhere, stays steady.



### Couple Play

Share intimate moments together.



### Long-Distance Fun

Connect and play remotely.



### App-Connected Gaming

Interactive, app-powered experience.

## 08 How to Use



### Power/Vibration Button

- Press and hold for 3s to turn on or off
- Tap to turn on/switch between 9 vibration modes.



### Thrusting Button

- Tap to turn on/switch between 6 thrusting speeds.



### Suction Button

- Tap to turn on/switch between 3 suction modes.



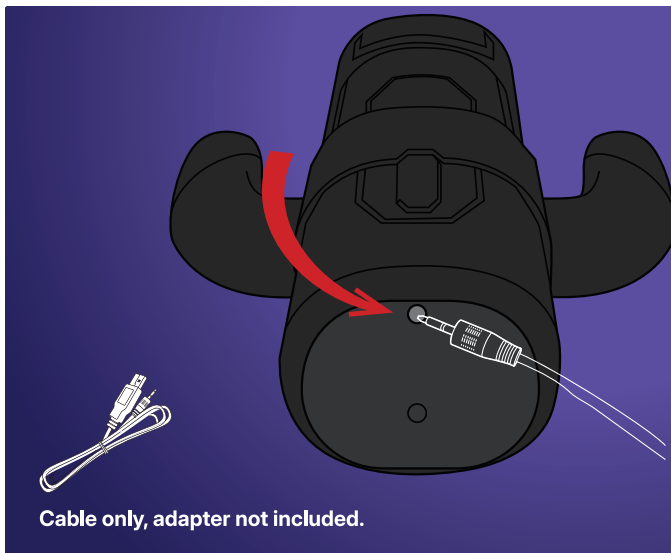
**Tips: fully charge before use for best performance.**

## 09 Charging Instructions



### Charging Instructions

Plug the DC charging cable into the port at the base of the device.  
Connect the USB end to a 5V power source (adapter or USB port).

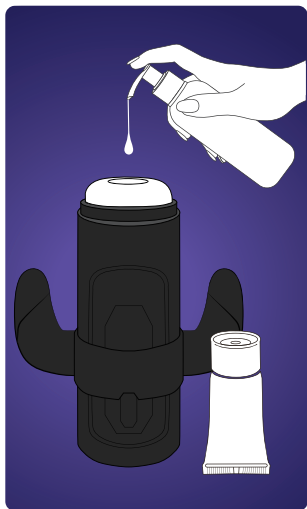


#### Important:

- Do not use while charging.
- Charge at least once every 6 months to maintain battery health.
- If malfunction occurs, recharge fully before use.
- Use only the included cable.
- Ensure the port is dry before charging.

## 10 Lubricant: Quick Guide

Before using your masturbator, always apply a generous amount of water-based lubricant to both the opening of the soft sleeve and the penis.



### Using the product without lubrication may result in:

- Increased friction.
- Discomfort or skin irritation.
- Damage to the soft sleeve.

### How to Apply:

- Squeeze lubricant directly into the opening of the inner sleeve.
- Apply lubricant evenly on the penis before insertion.
- Reapply as needed during use to maintain smooth operation.



The sample lubricant provided can be used approximately 2-3 times. For long-term use, we recommend purchasing additional water-based lubricant from trusted sources.



Do not use silicone-based or oil-based lubricants, as they may degrade the soft sleeve material.

## 11 Disassembly & Cleaning Guide



### Tips:

- Please remove the vibrating bullet before cleaning the inner sleeve.



#### Customer Support:

US/CA: [support@cafatop.com](mailto:support@cafatop.com) +1 (888) 828 4981

UK: [Edenlusttoys@outlook.com](mailto:Edenlusttoys@outlook.com) +44-8085013649

## 12 Cleaning Instructions

Keep your GAME CUP device clean after each use to ensure hygiene and durability.



### 1 Power off & disassemble

Turn off the device and separate all removable parts: outer shell, bullet vibrator, and soft sleeve.  
(Refer to page 11 for detailed disassembly.)

### 2 Clean the soft sleeve

Rinse with warm water and mild soap or toy cleaner.  
Avoid hot water and harsh chemicals.

### 3 Clean plastic parts

Wipe shells with a damp cloth or non-alcoholic wipe.

### 4 Dry thoroughly

Pat dry with a soft towel and air-dry the soft sleeve completely.

### 5 Reassemble & store

Once dry, put the device back together and store in a cool, dry place away from sunlight.  
Do not immerse the electronic unit in water.  
Avoid alcohol, bleach, and corrosive cleaners.  
Make sure all parts are fully dry to prevent mold and odor.



## 13 Specification & Safety Tips

### Product Basic Parameters:

Product Name	GAME CUP
Size / Weight	210x90x250mm/Approx.970g
Running Time	Approx. 90min (Full Power)
Charging Time	Approx.180min
USB Cable Length	81cm
Materials	ABS/TPE/Lithium-ion battery
Power Source	Rechargeable (Lithium-ion battery)
Country of Manufacture	PRC

### Precautions:

1. Please read all instructions carefully before use.
2. This device is for personal use only. Do not share with others to avoid cross-contamination.
3. Use only water-based lubricants. Avoid silicone or oil-based lubricants to prevent material damage.
4. Clean the removable sleeve thoroughly before and after each use with warm water and mild soap.
5. Avoid immersing the main device body in water. Clean with a damp cloth only.
6. Do not operate the device while charging.
7. Keep the device out of reach of children and pets.
8. Do not use the product if you experience discomfort, pain, or irritation.
9. Store in a cool, dry place away from direct sunlight and extreme temperatures.
10. If the device malfunctions or produces unusual noise or odor, discontinue use and contact customer service.
11. Do not disassemble or attempt to repair the device yourself.
12. Charge with the provided USB cable only. Use of incompatible chargers may damage the device.

## 14 Customer Support



### My toy won't turn on

Make sure it's fully charged. Press and hold the power button for at least 3 seconds. If still unresponsive, please contact support.



### Cannot connect to the app

Make sure Bluetooth is ON and the toy is powered on.

Restart the app and your phone.

If connection fails, try deleting and reinstalling the app.



### Functions not working

Confirm the device is powered on and charged. Try switching between the different modes to reset the motor functions.

If the device does not perform as expected, please reach out for assistance.



# After-Sales



## **After-Sales Service**

Thank you for choosing the GAME CUP. We hope this product brings you pleasure and satisfaction. We're here to turn on your pleasure — blending trend, fun, and innovation into the next generation of adult toys. So go ahead — play with it, and enjoy every moment.



## **Our Commitment:**

We stand behind the quality of our products. If your toy is defective within 12 months of purchase, we offer a free replacement or full refund.



## **Warranty:**

12-month replacement warranty.  
Covers manufacturing defects only (not misuse or damage from improper cleaning or storage).

**FCC Warning:**

This equipment has been tested and found to comply with the limits for a Class B digital device, pursuant to part 15 of the FCC Rules. These limits are designed to provide reasonable protection against harmful interference in a residential installation. This equipment generates, uses and can radiate radio frequency energy and, if not installed and used in accordance with the instructions, may cause harmful interference to radio communications. However, there is no guarantee that interference will not occur in a particular installation. If this equipment does cause harmful interference to radio or television reception, which can be determined by turning the equipment off and on, the user is encouraged to try to correct the interference by one or more of the following measures:

- Reorient or relocate the receiving antenna.
- Increase the separation between the equipment and receiver.
- Connect the equipment into an outlet on a circuit different from that to which the receiver is connected.
- Consult the dealer or an experienced radio/TV technician for help.

**Caution:** Any changes or modifications to this device not explicitly approved by manufacturer could void your authority to operate this equipment.

This device complies with part 15 of the FCC Rules. Operation is subject to the following two conditions:

(1) This device may not cause harmful interference, and (2) this device must accept any interference received, including interference that may cause undesired operation.

This equipment complies with FCC radiation exposure limits set forth for an uncontrolled environment. This equipment should be installed and operated with minimum distance 0cm between the radiator and your body.