

# **3D Smart Body Measurement Mirror**

**XK-H003**

**User Manual**



**Shenzhen Xianku Intelligent Co., Ltd.**

## Disclaimer

In order to protect the legitimate rights and interests of users, please carefully read the attached [Product Specification] and its disclaimer before using this product, and be sure to operate and use this product in accordance with the requirements of this [Product Specification].

This product can help you quickly obtain your personal physical data and status according to your needs. The personal data information about you obtained by the device is calculated and generated based on the hardware and software of the device. The final decision on whether it meets your demand is based on your personal understanding of the data application scenario and the relevant manuals and documents of the device.

Once you start to use this product, it is deemed that you have read, understood, recognized and accepted all the terms and contents of the [Product Specification] and the relevant disclaimer of this product. The user promises to be responsible for his/her own behavior and all consequences arising therefrom. The user promises to use this product only for the legitimate purpose, and agrees to any relevant policies or guidelines which may be formulated by Shenzhen Xianku Intelligent Co., Ltd. (hereinafter referred to as the "company") now and hereafter.

In the process of using this product, you must strictly comply with and implement the requirements, including but not limited to the [Product Specification]. For all personal injuries, accidents, property losses, legal disputes, and other adverse events causing conflicts of interest caused by the use behavior or irresistible factors in violation of the [Product Specification] and the disclaimer, the user shall bear the relevant responsibilities and losses, and the company shall not bear any responsibility.

The company will not bear any responsibility for any violation of the law directly or indirectly caused by the user's use of this product.

## Technical Statement

- ✧ The product data acquisition scheme is infrared structured light, which only collects the user's body surface shape data, and does not involve the user's face recognition and other image privacy.
- ✧ After testing, this product can establish 1:1 real data model for ideal models under normal environment. [Normal environment refers to indoor environment or semi-outdoor environment, without strong light, ultraviolet, infrared, other interference light sources, and high humidity, high temperature/low temperature conditions.]
- ✧ In order to ensure that the device can normally obtain the data of the collected person, the collected person shall avoid wearing clothes made from reflective and light absorbing materials and try to wear light colored clothes.
- ✧ In order to ensure the accuracy of the data, the collected person shall try to ensure that the body lines are in an unobstructed state (the collected person can wear close fitting clothes, such as yoga clothes, etc.), and avoid wearing puffy, special-shaped and other clothes that affect the body posture.
- ✧ Since this device only collects the data such as user's body surface, body fat and weight, and does not include color image related data, the obtained data shall not be the only data related to pathological analysis of human bones and muscles, etc.

## Safety Warning

This product is in non-waterproof design, so it shall be placed in a dry and ventilated environment; Do not use this product outdoors, or in harsh environments that may be exposed to rain, thunder, sand, fog, snow, hail, strong wind, and low temperature.

Do not splash water on this product, and be sure to effectively prevent water from entering the power plug of this product, the gap between the mirror surface and the frame, and avoid short circuit or other damage to this product.

Please pull out the power plug in thunderstorm weather to avoid damage to the device. In case of noise, odor or other abnormal use during use, please immediately turn off the power and pull out the plug, and contact our customer service personnel.

Please ensure that the socket used is a qualified product with national safety certification. Do not overload the power socket.

Please make sure to use the original power cord attached to this product, and do not use power equipment of other brands to supply power to this product.

When using this product, please keep away from the environment with high electromagnetic interference such as cell phone base stations and high-power transmitting equipment. Please install the product in strict accordance with the requirements of this [Product Specification], and place the product in a stable and fixed position to ensure the stability of the product.

Please ensure that there are no sundries, heavy objects, objects that may collapse and other objects that may affect the stable placement of the product or damage the mirror screen.

Please avoid any object or any external force from impacting, striking or pressing the mirror screen of this product, and do not scribe on the mirror screen of this product to prevent the mirror screen from being damaged or broken by force.

Please ensure that minors do not play, challenge, chase, play, run or jump around this product, or push, touch or hit this product in any way to avoid dumping or damage of this product.

Please ensure that your pets do not play, run or jump around this product, or push, touch or hit this product in any way to avoid dumping or damage of this product.

## Product Maintenance

Do not wipe the product surface with solutions containing chemical substances at will, for these solutions may cause permanent damage to the product surface.

Clean and maintain the product surface properly with a clean and soft dry cotton cloth after power-off when necessary, but do not repeatedly wipe hard.

If water enters this product carelessly, do not directly heat related parts with the hot air of the hair dryer.

Do not disassemble this product by yourself, which may cause product damage and human injury, and invalidate your product warranty.

Do not remove the back cover. The internal adjustment and inspection of the product shall be carried out by professionals. Do not use non-original accessories for maintenance and replacement without authorization.

Do not modify this product or use it for purposes other than its original design.

Do not decompile, modify or improperly upgrade the software of this product by any means without authorization. Do not cover or block the heat dissipation hole at the back of the product body to prevent the product body from heat dissipation.

Do not put sharp objects or metals into the heat sink to touch the signal connector, so as to avoid short circuit and damage to the product or electric shock.

Do not wash the floor mat by machine. Otherwise, it will shorten the service life of the floor mat. Just flush and dry it by air.

## Service Responsibility Exemption

In case of the following circumstances, we may not provide services as required (including but not limited to “three guarantee” services):

Accidents are caused by force majeure (including but not limited to fire, flood, earthquake, lightning, etc.). Service conditions are deteriorated due to social problems (including but not limited to turmoil, war, strike and government control, etc.).

The service cannot be implemented due to the interruption of energy supply (including but not limited to electricity, water supply and oil, etc.). The communication system of the operator is interrupted.

The device damage is caused by natural wear and tear.

Direct damage caused by failure of on-site equipment operation environment (such as humidity) or external factors (such as external electromagnetic interference and internal interconnection equipment failure, etc.) to meet the environmental requirements for normal operation as specified in writing.

Large-scale hardware or data damage is caused to this product due to the user's intention or negligence, improper use or deliberate sabotage.

Damage is caused by the user's failure to use this product according to the instructions in the [Product Specification] and the Disclaimer. The user (including the pets at home) causes the falling, sliding, overturning, breaking and/or other damages of the product artificially.

The system damage is caused by the user or any third party, including damage caused by unauthorized relocation, installation and upgrading of the system without complying with our requirements.

The system is damaged due to the user's infrastructure.

The device has been modified, disassembled or repaired without our authorization, and the hardware or software has been modified.

Purchased parts are not included in the scope of services contained in this service manual. The loss is caused by intentional act.

Appearance wear, scratches and other losses that do not affect normal use occur. Data loss and other non-hardware losses are caused.

The warranty service time limit has been exceeded. Indirect losses are caused.

The product is confirmed of having been lost or stolen.

System and software problems such as self-recovery, upgrading and software poisoning cause functional failures of terminal products. The use of digital accessories that have not passed the national 3C compulsory certification leads to the use function failure of the terminal products.

In any case, the maximum amount of compensation for user's losses caused by our responsibilities shall not be higher than the amount paid by the user for purchasing this product.

## Product Core Parameters

Product model	XK-H003
Nine functional applications	Infrared laser lattice technology, 360 ° non-contact rotation measurement 3D real digital person Intelligent volume, generating 128 precise data items of human body in one minute Body composition measurement, generating the body composition report Analysis of body posture defects Human body change tracking and suggestions Wear recommendations Size recommendation 3D cloud design
Body composition measurement principle	The high-precision human bioelectrical impedance (BIA) lipid chip is used to accurately detect 14 body data items such as body weight, BMI, body fat rate, visceral fat, body age, body score, obesity, basic metabolism and muscle content
Number of clouds at the original point	About 2 million pcs
Cloud density at the original point	About 28 pcs/ cm <sup>2</sup>
Measurement range	Optimal measurement distance: 0.75 m, applicable height 110 cm – 200 cm
CPU	AMD 5300U quad core/8-thread Basic/maximum frequency: 2.60-3.80 GHz
GPU	Integrated Radeon Vega 6 GPU
RAM	DDR4 SO-DIMM 3200MHz 8G
System	Win11 (Genuine version activation)
Storage	SATA 128G SSD
Sound	10W power amplifier dual channel box speaker
Power supply	AC 100-240V 50/60 Hz
Network	Supports the 1000M Ethernet 5G dual-frequency WIFI/BT 5.2 two-in-one module
I/O interface	1 * three-hole power interface, 2 * USB3.0, 1 * RJ45, 1 * special type-c for turntable
Display	32-inch high-definition full view LCD touch screen The screen brightness is about 350cd/m <sup>2</sup>
Measuring range	Weight: 10KG-200KG Accuracy: 0.1KG Body fat: Applicable to 10~70 years old
Device dimensions	Body measurement mirror: 1760 * 500 * 40 mm; Turntable: diameter 450 ± 2mm * 91 ± 2 (H) mm, and the minimum total usable area is only about 1.7 m <sup>2</sup> ; transportation volume: about 1880 * 650 * 288mm
Device material	Body measurement mirror: High transmittance mirror glass, aluminum profile RAL 7040 gray color frame with surface oxidation sandblasting. Turntable: ABS matte RAL 7040 grey
Device weight	Transportation weight: about 54KG Net weight of mirror body: about 40.5kg; turntable: net weight of turntable: about 7kg; gross weight: about 8.5kg.
Operating environment	Operating temperature: - 10 °C~50 °C Storage temperature: - 20 °C~70 °C Operating light intensity: indoor 100000lux Operating humidity: 5%~90% RH, non-condensing

## Special Turntable

Product model	H003-special turntable for body measurement mirror
Functions	Precise human body data scanning with the main device body based on with the controllable, uniform-speed and stable rotation function Weighing the user's weight Measuring user's body fat
Weighing range	10- 200.0 KG, accuracy 0.1KG
Using distance	The distance between the turntable and the mirror body is 750mm (the vertical distance between the front edge of the turntable and the mirror surface)
Operation decibel	No more than 60 db
Rated power and power supply specification	25W DC 19V 2A
Communication characteristic	Type-c interface: baud rate 9600 bit/s
Measurement characteristics	Weight: 10.0-200.0KG, accuracy: 0.1KG Impedance value: 200-1500 $\Omega$ , bioelectrical impedance measurement method, single frequency 50KHZ, 4-point contact 304 stainless steel electrode sheet Protein rate: 5.0-32.0% Muscle weight: 7.0-141.5KG Moisture content: 20.0-85.0% Bone mass: 1.0-4.0KG Basic metabolic rate: 400-3500/kcal Physical age: 15-80 Visceral fat grade: 1.0-59.0 BMI: 4.0-185.5 Skeletal muscle volume: 3.1-99.0KG Body fat rate: 5.0-45.0% Standard weight: 10.0-200.0KG, accuracy: 0.1KG Induction change weight: 3.0KG
Material	ABS, 304 stainless steel electrode sheet
Dimensions	Diameter $450 \pm 2$ mm, height $91 \pm 2$ mm
Appearance	Matte grey
Operating environment	Operating temperature: - 10 $^{\circ}\text{C}$ ~50 $^{\circ}\text{C}$ Storage temperature: - 20 $^{\circ}\text{C}$ ~70 $^{\circ}\text{C}$ Operating light intensity: indoor 100000lux Operating humidity: 5%~90% RH, non-condensing Data is transmitted with the device body through Type-C special data cable connection



## Instructions for Installation



Non-woven fabric

Warranty card

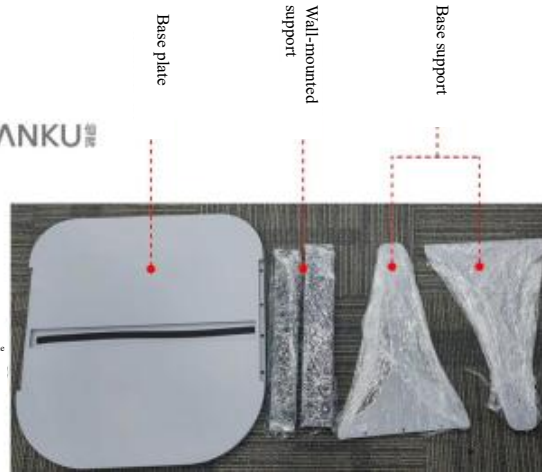
Power wire

Anti-slip mat

Mounting component



### Description of device accessories



Base plate

Wall-mounted support

Base support



Slot type screwdriver/Cross head screwdriver (1 pc): For tightening the turntable screws

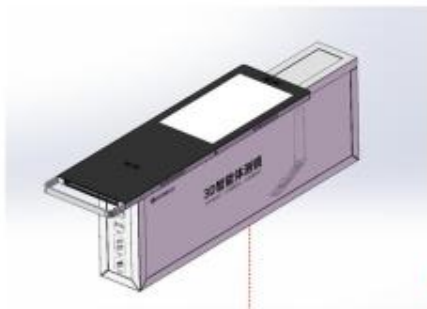
Phillips screws (8 pcs): For the auxiliary fixing of base plate and support

Internal hexagonal wrench (1 piece): Used for locking the hexagon socket screws during the base installation

Internal hexagonal wrench (14 pcs): For the base assembly and base and device fixing

**(The anti-slip mat has been installed to the base plate before delivery, and you can remove it as needed.)**

## Installation Preparation



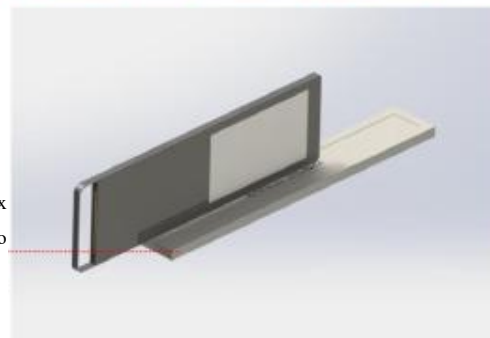
Installation preparation: A space of about 2.5 m x 1.5 m is required for the device installation in order to place the device for installation.

When using the instructions for installation, you can refer to the right figure and the following figure to place the device.

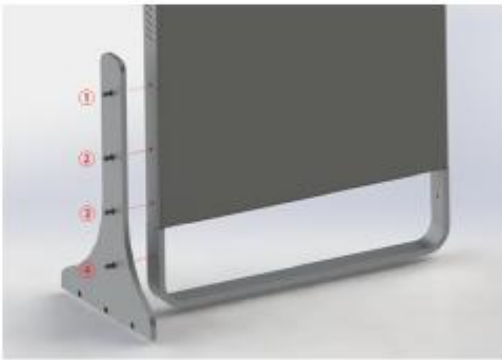
The main purpose is to pad the device for installation, and prevent the hard objects and sharp objects, etc. from scratching the device surface, causing unnecessary losses

Place the device on honeycomb box to facilitate installation, but the device falling and damage need to be prevented

If the above method is not applicable to the site, the honeycomb box cover can be placed flatly on the ground (or other soft materials) to protect the device and prevent the device from being scratched



Please prepare a suitable space for the installation of the device. If you have a platform that is more convenient for device installation, you can prepare soft materials to prevent the device from being scratched or damaged due to falling during installation.

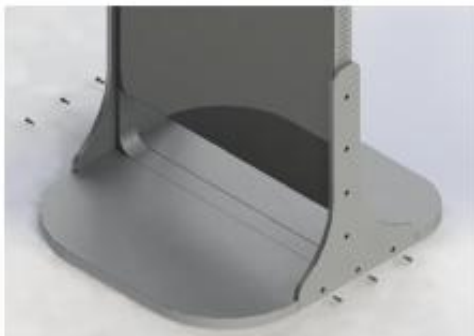


Install the hexagonal socket screws provided with the device in sequence as shown in the figure  
Please pay attention to the direction of the support. The shorter side of the support is placed in the mirror surface direction

The both-side installation method is symmetric method.  
During this step, do not tighten the screws. You only need to position the support



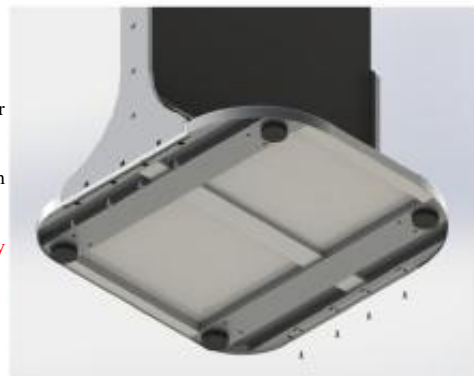
During this step, do not lock the mounting screws, and reserve a certain assembly clearance for the position adjustment during the subsequent installation.



- ① After the support is installed, place the base plate as shown in the left figure.  
Please note the direction of the base plate, and the rounded corner is large and advanced (mirror surface)
- ② Adjust the base plate and screw in the inner hexagon screws on both sides
- ③ Tighten the supports crews after positioning the bottom inner hexagon screws
- ④ After the support screws are tightened, tighten the screws on both sides of the base plate.

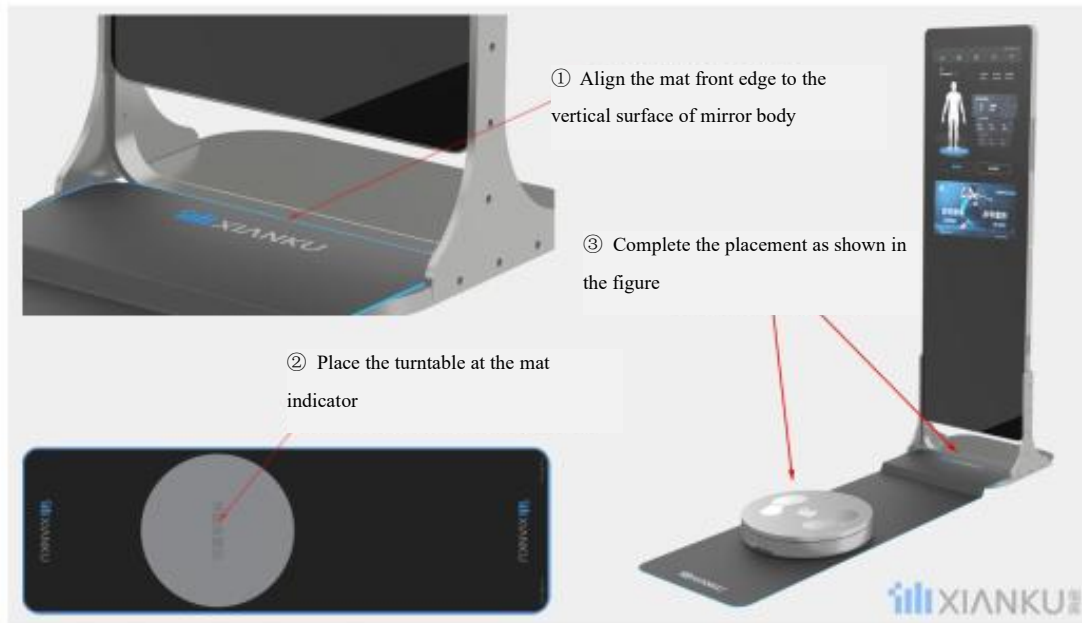
As shown in the right figure, the screws on the base plate can be fixed after the screws on both sides of the base plate are fixed.  
The bottom screws are cross cone head screws, which can be tightened in turn after corresponding hole position is aligned.

Note: If the floor is uneven, the device placement can be adjusted by adjusting the height of four black anti-skid mats



After the final device above is installed completely, you can place the device at an appropriate space to complete the device placement.

## Use and placement of device (base version)



When using the base experience device, please keep a usable area of at least 1850mm × 1050mm

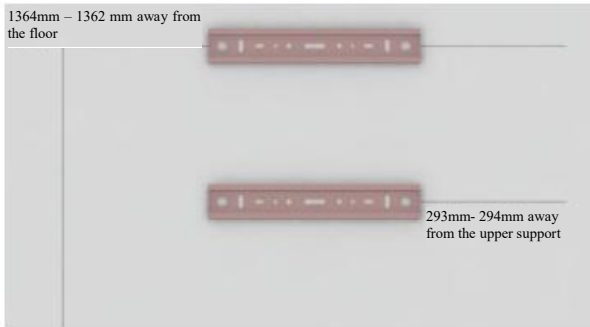
Please place the turntable at the indicated area of the floor mat in strict accordance with the figure above. (If it is not convenient to place the floor mat, please ensure that the turntable is 750mm away from the mirror body.)

The above is the text and graphic description. If necessary, you can scan the QR code below to obtain the video installation instructions through the official account.



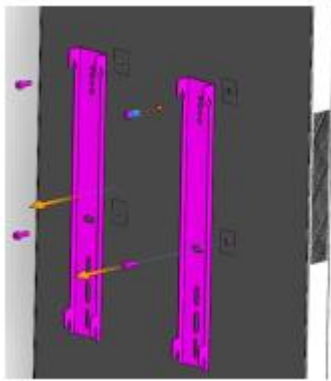
**Wall-mounted parts installation (The wall-mounted parts need to be installed by professionals, and a mount-mounted support needs to be purchased additionally. Please contact our sales personnel if needed. Do not install by yourself. We will not be responsible for product damage and human injury caused by personal incorrect installation)**

## 1. Wall



- ① Punch holes to install the upper support on the wall with the vertical distance of 1362mm~1364mm from the floor according to the actual conditions.
- ② Punch holes to install the lower support at the position 293~294mm under the upper support according to the actual conditions.

## 2. Device

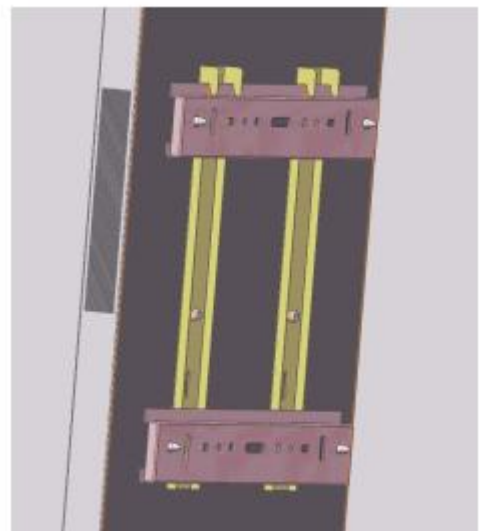


Install the wall-mounted parts of the device as shown in the left figure.

## 3. Installation Completion

Complete the assembly of wall-mounted parts as shown in the right figure. The main body of the device shall be parallel to the wall, and the bottom U-shaped support shall be located on the floor.

When the product is installed on the wall, there will be a minimum distance of 25mm between the theory and the wall.

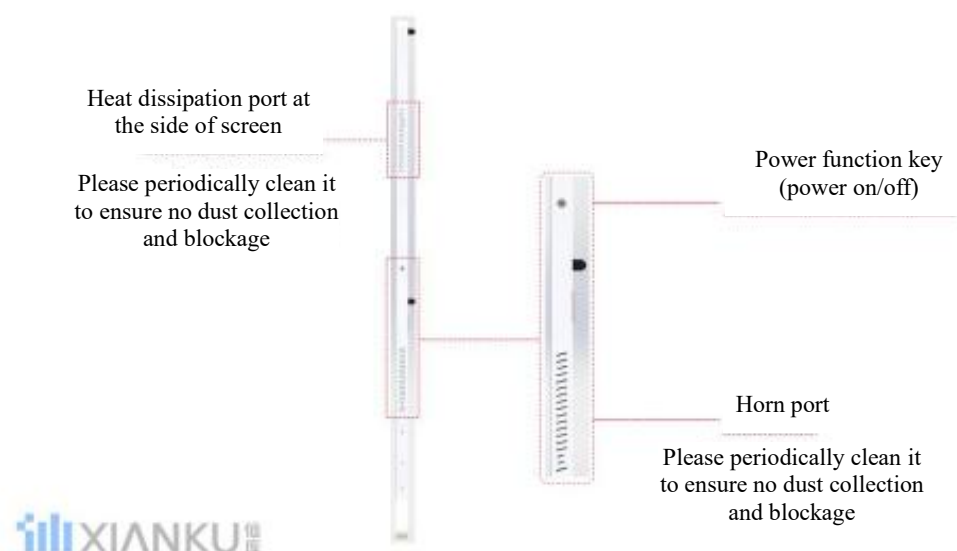
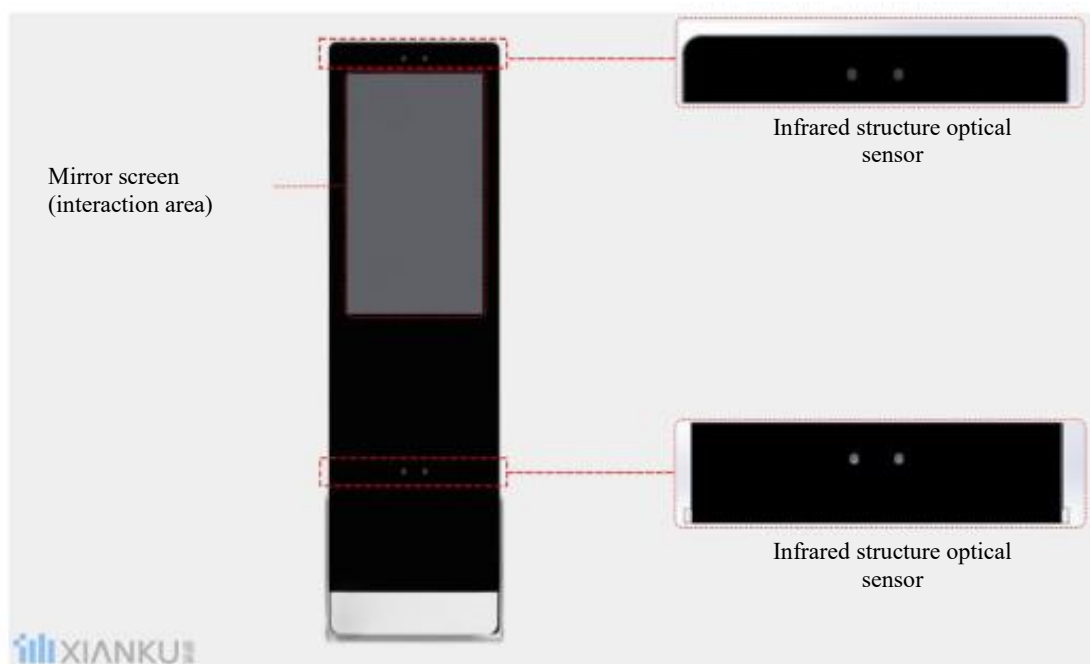


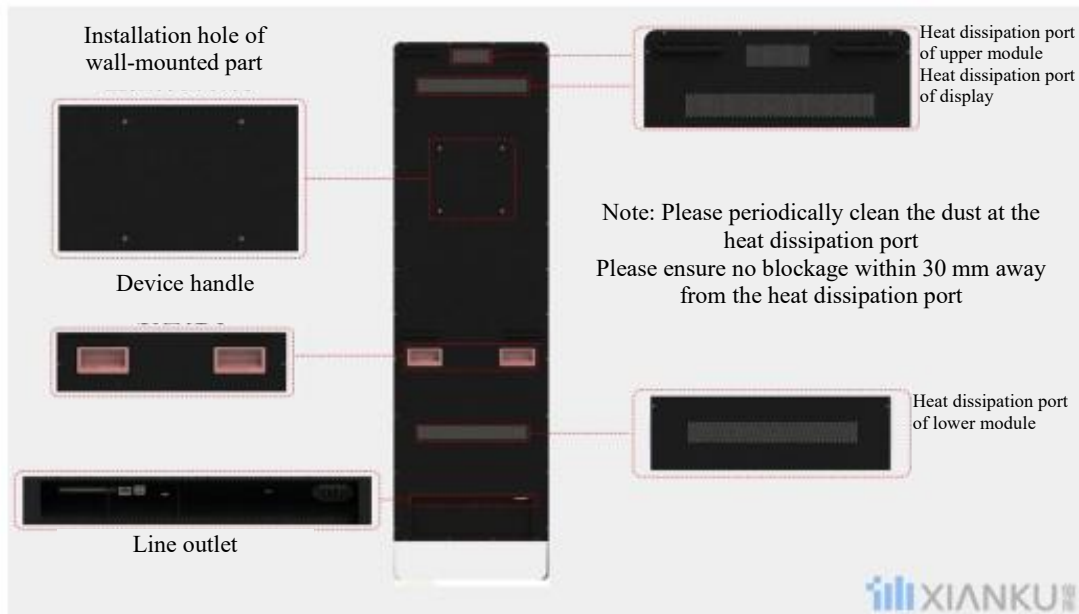
## Use

### Product Configuration List

SN	Part	Quantity
1	H003 body measurement mirror • main body	1
2	Body fat turntable	1
3	Mat	1
4	AC triplex power cord	1
5	Special data cable for turntable	1
6	Base (Wall-mounted)	1
7	Non-woven fabric	1
8	Cross head screwdriver (applicable to M3)/ Slot type screwdriver	1
9	Internal hexagonal wrench	1
10	Backup screws	Multiple

## Description of Main Parts





## Turntable Access Port (at the Turntable)



After the turntable cable is connected, please tighten the attached screws with the matching slot type screwdriver (straight-head data cable)



After the turntable cable is connected, please tighten the attached screws with the matching cross head screwdriver (bent-head data cable)



---

## Precautions for use:

- ✧ It is forbidden for people at the age of below 6 and over 70 to use the product. Minors and the elderly must use the product under the supervision of adults.
- ✧ It is forbidden to use the product when you feel unwell (drunk, diarrhea, fever).
- ✧ It is forbidden for vertigo patients to use it.
- ✧ It is forbidden for those with medical devices in vivo such as cardiac pacemaker to use it.
- ✧ It is forbidden to go up and down the turntable during rotation to avoid damage caused by slipping and falling.
- ✧ It is forbidden to go up and down the turntable at the edge or jump up and down the turntable to avoid injury caused by slipping and falling.
- ✧ For a better measurement experience, please wear close-fitting clothes, keep barefoot and tie up your long hair without blocking your neck.
- ✧ During the use, please stand upright and still without shaking and turning your head.

*Note: Please strictly follow the above instructions to avoid unnecessary damage.*

## Specifications for Use

Please ensure that you have understood the contents of Technical Statement and Precautions for Use of the product.

### 1. Body Measurement Specification

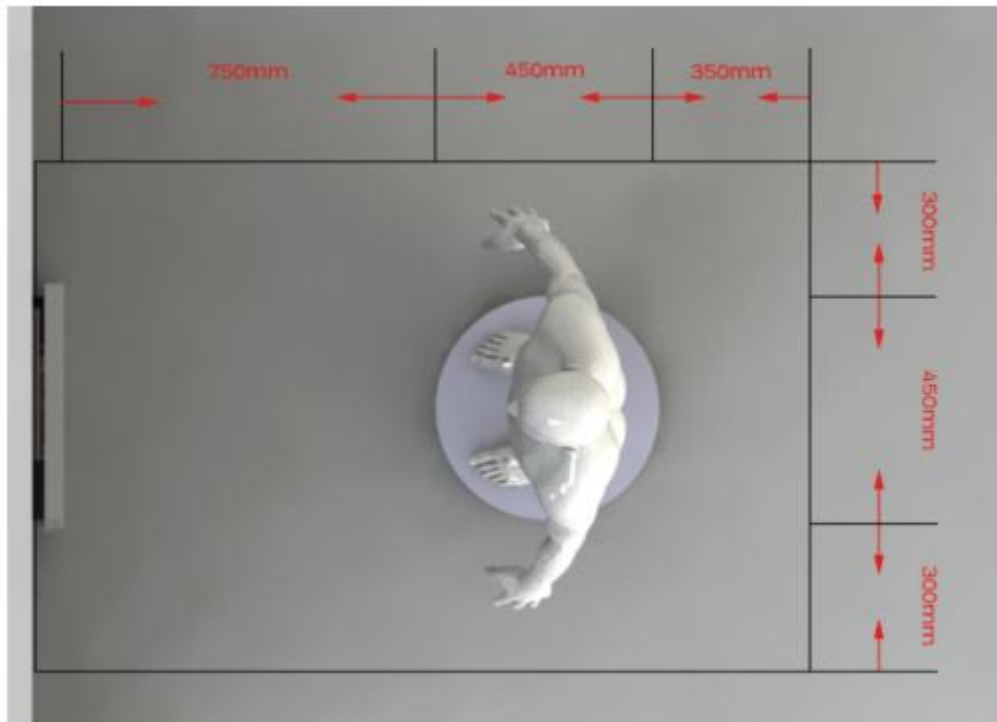
- (1) The collected person shall wear close fitting clothes, or only wear underwear and other clothes that do not affect the body posture. Try to avoid wearing loose, special-shape clothes or clothes that affect the body surface lines (such as fluffy dresses and loose jackets, etc.).
- (2) The collected person shall take down ornaments (especially reflective and light absorbing ornaments, such as black quartz watches, large jewelry, etc.) before collection.
- (3) Please perform gesture measurement according to the instructions of the device, keep the posture static after meeting the acquisition gesture, and keep the gesture static during the rotation acquisition process.
- (4) Please ensure that there is no person or object interfering with the collection range of the device during the collection process. Avoid abnormal data collection.
- (5) Please ensure that the lens module is clean and free of foreign matters before use.

### 2. Specification for Use of Turntable

- (1) When turning on the device, make sure that the turntable has no load bearing.
- (2) The tiptoes and heels shall uniformly contact the electrode plate.
- (3) The sole of the foot shall be measured after fully contacting the electrode plate. Poor contact will affect the measurement results.
- (4) The measurement must be carried out barefoot, and the sole of the foot must be cleaned before measurement.
- (5) The turntable must be placed at a flat and firm place for measurement.
- (6) Do not carry out measurement when thighs touch each other



## Description of Device Using Space



- The distance between the device and the turntable shall be at least 750mm. In case of wall mounting, the specification of the device itself shall be considered, and such distance shall be 813.5mm.
- A space of 350mm shall be reserved at the rear of the turntable to ensure accurate measurement.
- The turntable serves as the center of a circle, and there shall be no interference when it is used within the range of 300mm.
- A using space of 1613.5mm×1050mm shall be reserved under the condition of ensuring the stability of the device. (The minimum device space is about 1.7m<sup>2</sup>.)

**To ensure the normal operation of the device, please ensure that the device is placed in strict accordance with the above minimum space requirements during use.**

## Device Storage Space

Under normal conditions, the storage space of the device is about 0.3 m<sup>2</sup> (0.55 × 0.52) (In this case, please store the device at the storage position of the turntable at the bottom of the device)



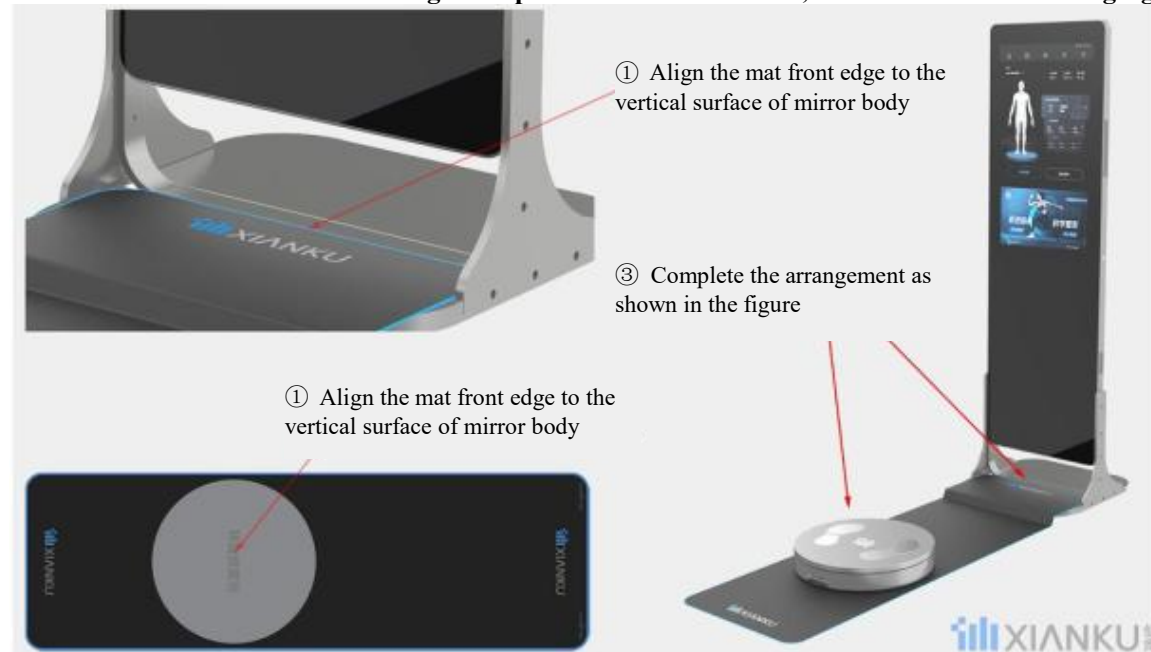
## Use (Hardware Part)

**Note:** Before use, please confirm that the device using space meets the device using space requirements. For the device using space requirements, please read the *Description of Device Using Space*.

- ✧ Place the device at the designated position.
- ✧ Connect the device power cord (Connect the AC power cord to the device power access port)
- ✧ Connect the special type-c data cable of the turntable to the special interface of the device turntable, and fasten the data cable with the strip clip as shown in the figure below:



- ✧ Check whether the sensor mirror surface is dirty (the device is equipped with non-woven fabric, which can be used to clean the dirty mirror surface. Please read the product maintenance section for device cleaning)
- ✧ Place the floor mat at the specified position according to the correct orientation, and ensure that the front edge of the floor mat is flush with the vertical surface of the mirror
- ✧ Place the turntable on the designated position of the floor mat, as shown in the following figure:



- ✧ Connect the special type-c data cable of the turntable to the turntable, and tighten the screws, as shown in the following figure:



- ✧ **Short press the power button to start the device (power button: Short press to start the device, and long press to turn off the device. Note: if it is not necessary, please select to turn off the device in the program. Please read the software using section for the operation instructions for turning off the device)**

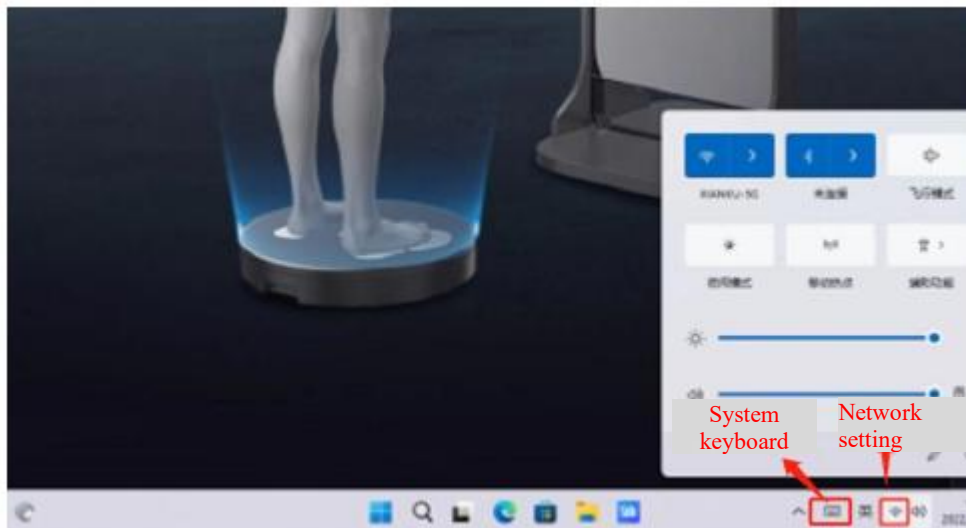
## Use (Software Part)

### Instructions for System Operation

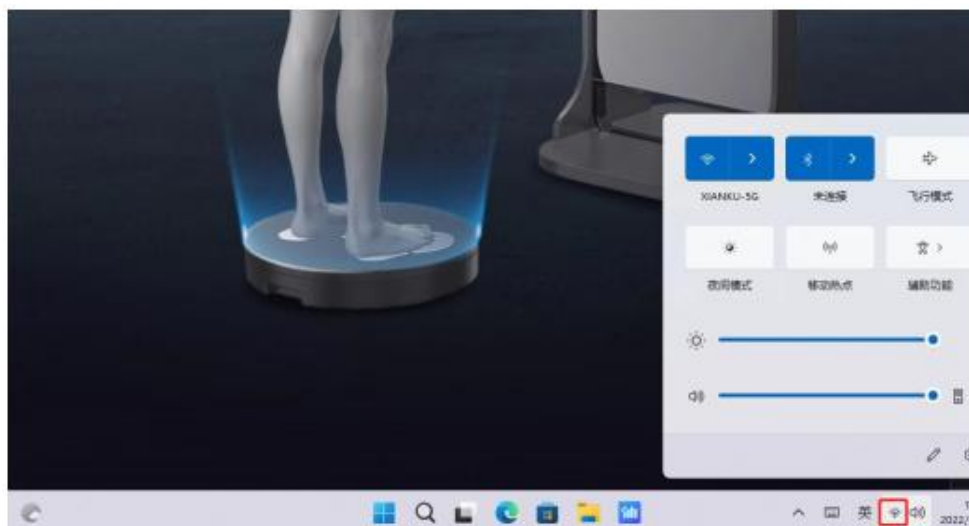
- Side downward with three fingers: Return to the desktop
- Slide upward along the screen bottom edge with one finger: Display the taskbar



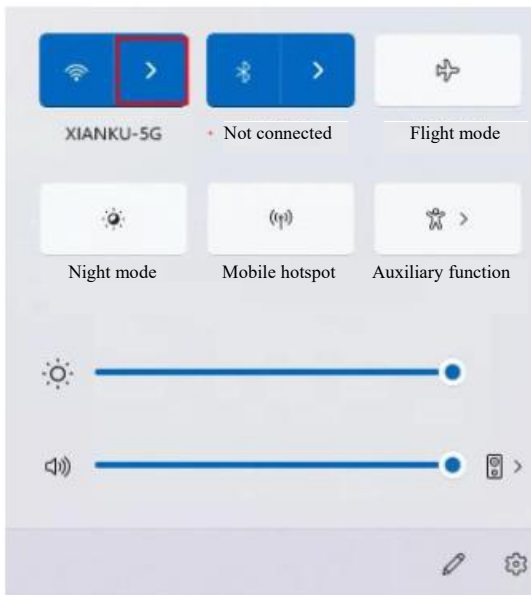
- Use the system keyboard: Click the keyboard icon on the taskbar



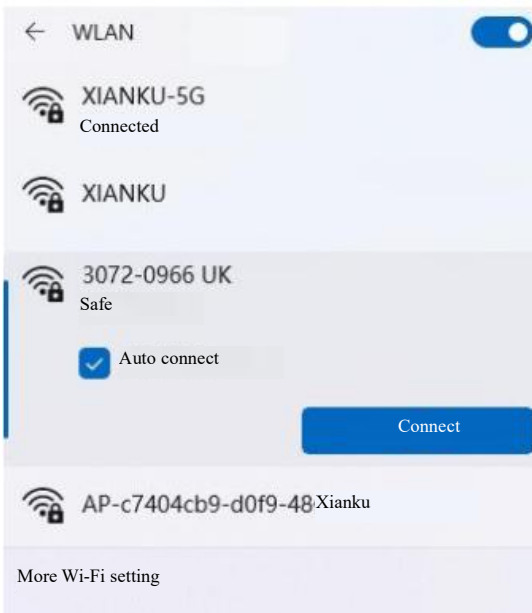
- Set the network:
  - Click the WiFi button of the task bar, and the setting window will then pop up



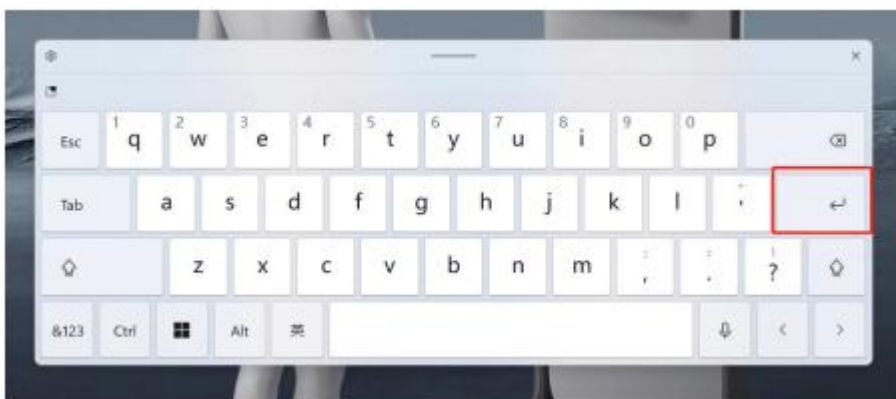
- Click the WiFi list arrow button



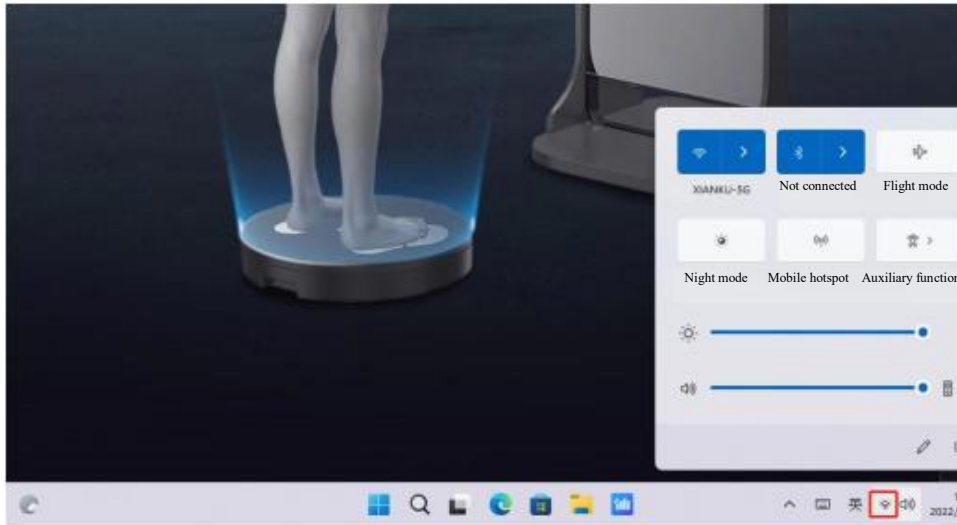
- Select the correct WiFi name, and select “Auto connect”. Click “Connect”



- Use the screen keyboard to input the WiFi password, and click the “Enter” button to start connecting



- After the connection is successful, click the WiFi button on the taskbar again to close the WiFi window. So far, the WiFi setting has been completed.

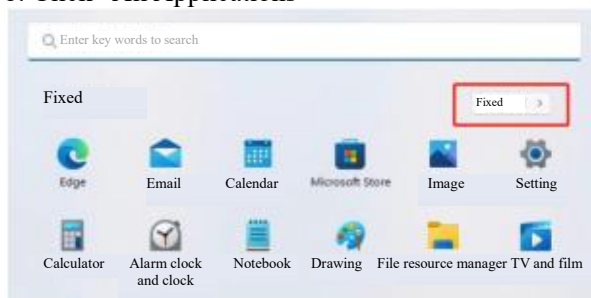


- System one key recovery function: Restore the factory settings by one key
  1. The device cannot normally enter the system:  
Connect an external USB keyboard, press and hold the keyboard F9 key and then press the power button to power on the device. Then, you can enter the one key recovery interface.
  2. The device can be normally powered on to enter the system desktop:

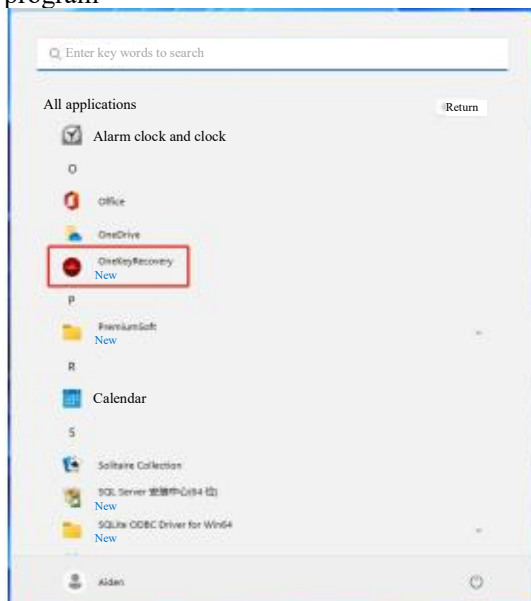
a. Click the “Start” button on the taskbar



b. Click “All Applications”



c. Find the OneKeyRecovery icon in the application list, and click the icon to open the system recovery program





d. Click the “Recovery OS” button



e. The device will be powered on automatically to enter the Recovery interface



f. Click the “Factory Reset” button to start recovering the system.

g. Please wait patiently and do not turn off the device during the system recovery.

h. Click the “Exit” button to return to the system.

## Instructions for Use of Body Measurement Terminal Interaction System

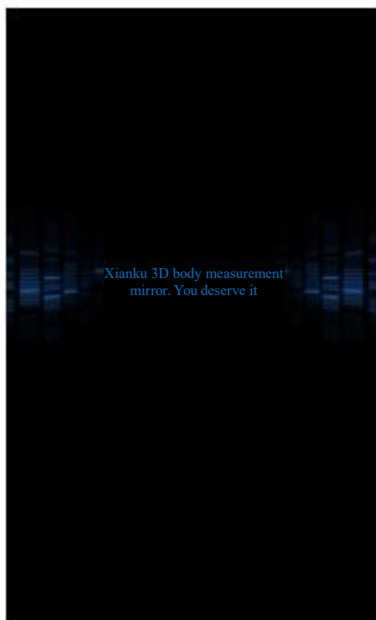
- ✧ The interaction system will vary with the upgrading and iteration. Please use the interaction system based on actual conditions.

### System startup

- ✧ After the device is started, the interaction system will be started automatically without any operation.
- ✧ The server is being connected.



- ✧ The server is connected successfully:



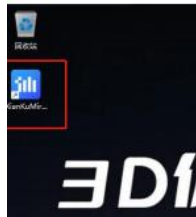
**A good network environment is required for the normal operation of the interaction system. Please ensure that the network connection is normal.**



## Version Update

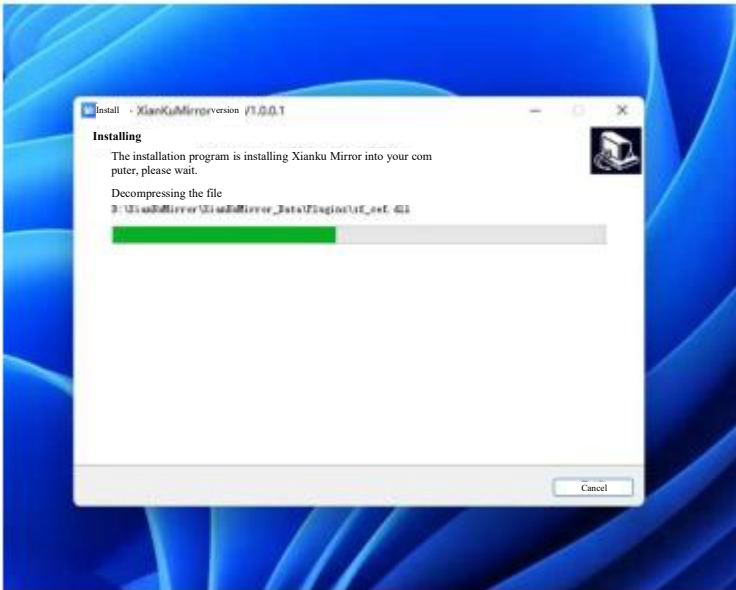


- ✧ The interaction system supports automatic version update.
- ✧ After downloading the new version of resources, it will automatically exit the program and enter the installation step without any operation.
- ✧ In the process of downloading resources, please do not turn off the device or system to keep the network unblocked
- ✧ During the download process, if you accidentally shut down the device or system, you can double-click the



program icon on the desktop to open the system, and the system will re-download the new version of resources.

## System Installation

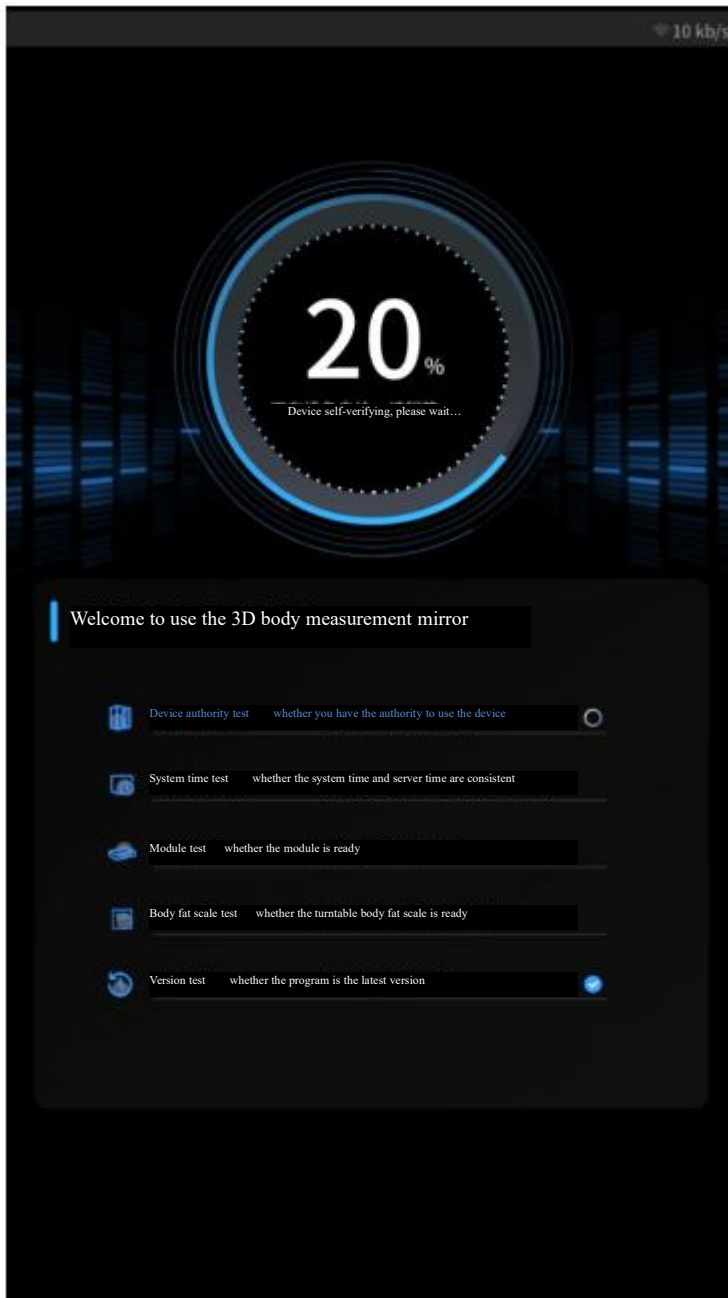


- ✧ The system is installed automatically without any operation.
- ✧ Do not shut down the device or stop the installation process during installation.
- ✧ If you carelessly shut down the device or stop the installation process, you may double-click the icon

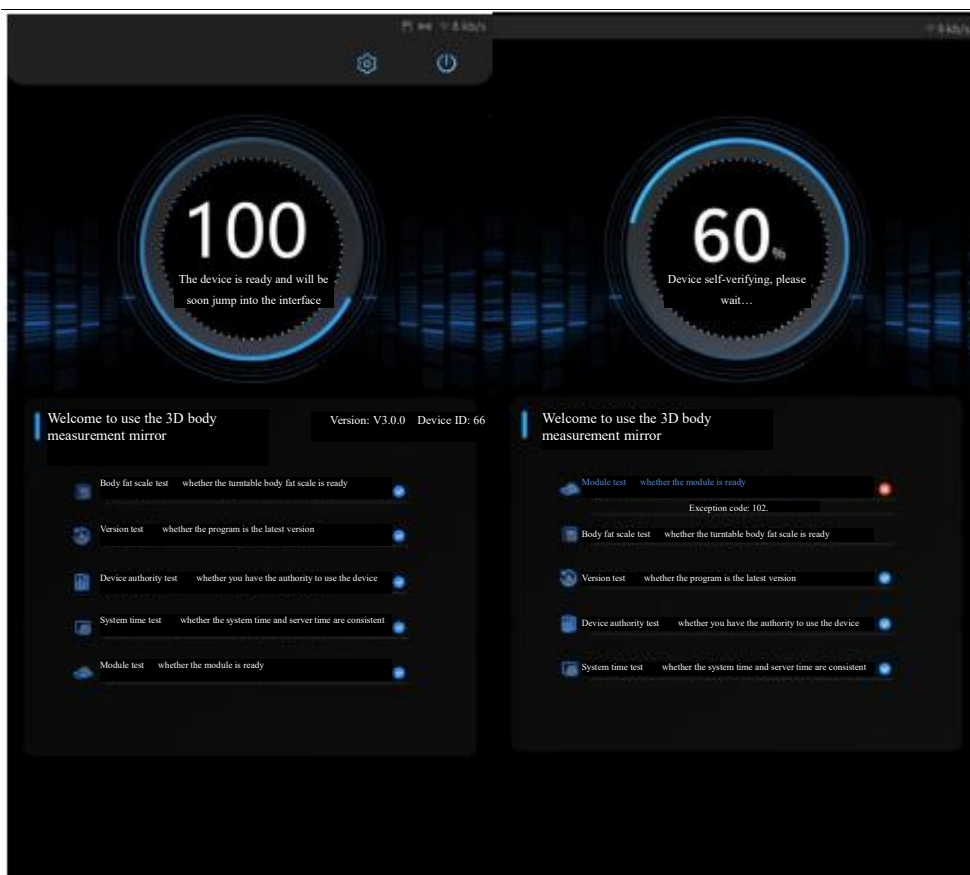


on the desktop to open the system. Then, the system will re-download the new version of resources.

## Device Self-verification



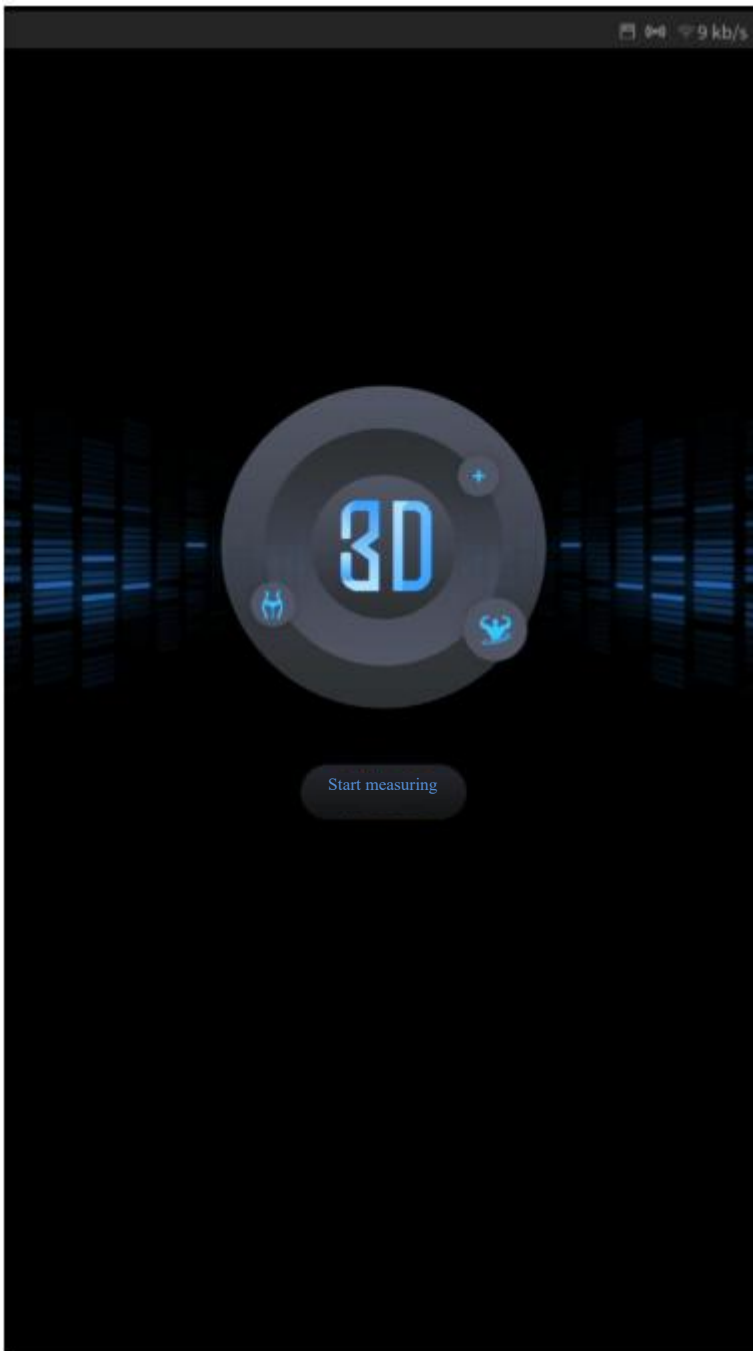
- ✧ The self-verification of device in four items enables the device to run more stably.
- ✧ When the device is abnormal, please operate according to the interface prompts.



Normal Device Example

Abnormal Device Example

## Welcome Interface



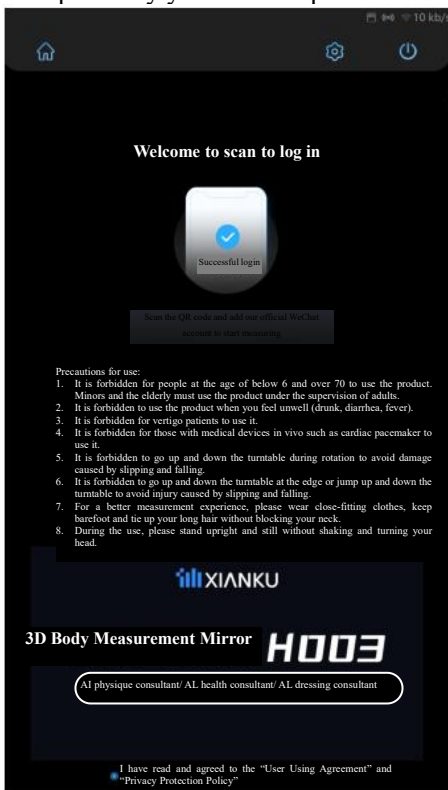
- ✧ If there is no operation within 10 seconds, the screensaver interface will pop up, and the contents of the screensaver interface can be configured
- ✧ Click "Start measuring" to jump to the login interface

## Login Interface

- ✧ Use your mobile phone to scan the QR code through We Chat to log in



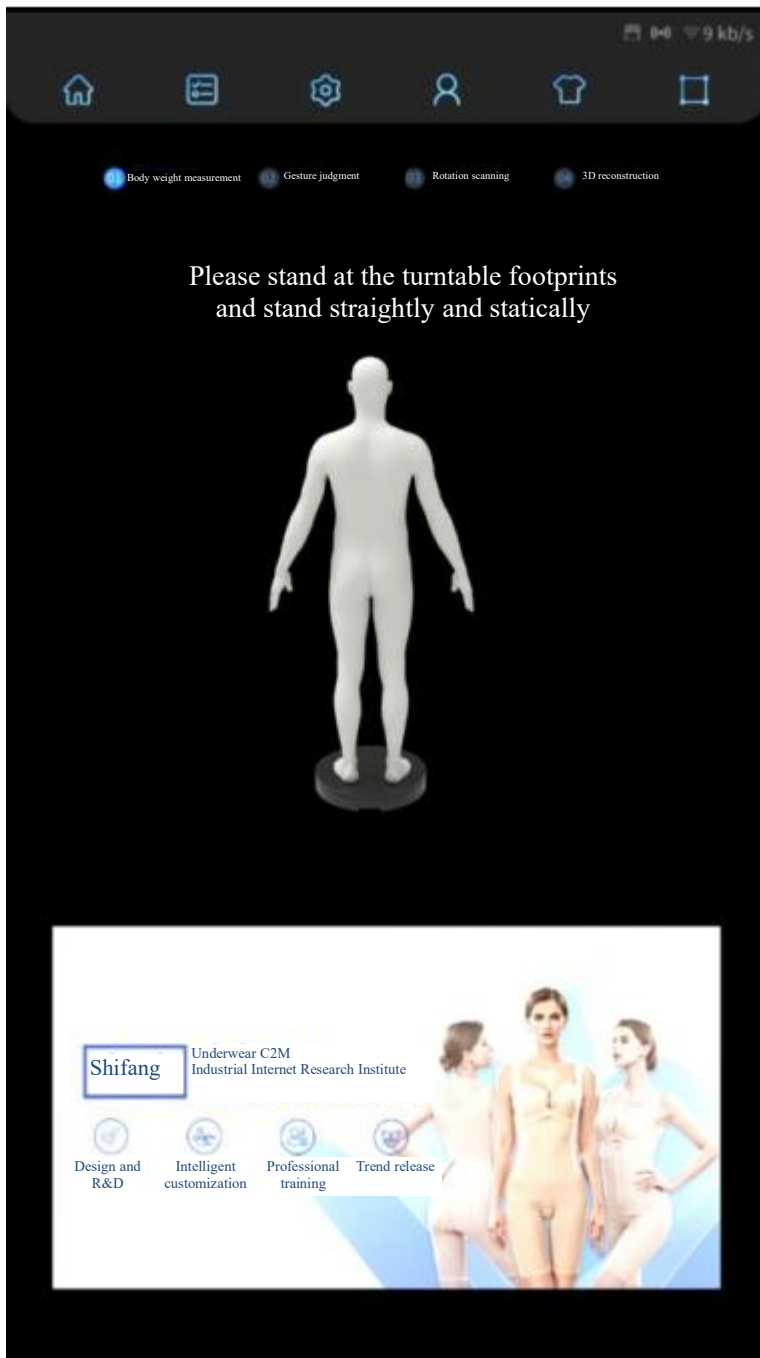
- ✧ After you added our WeChat official account, the system will prompt successful login. At this time you can put away your mobile phone



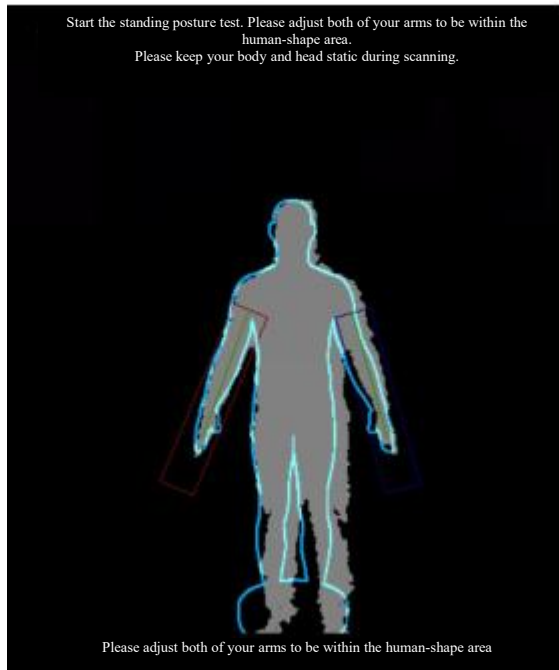
- ✧ We provide the third-party official account and mini-program configuration service.
- ✧ Please read “Precautions for Use”, “User Using Agreement” and “Privacy Protection Policy” before scanning the QR code to use the product.


## Scanning Interface

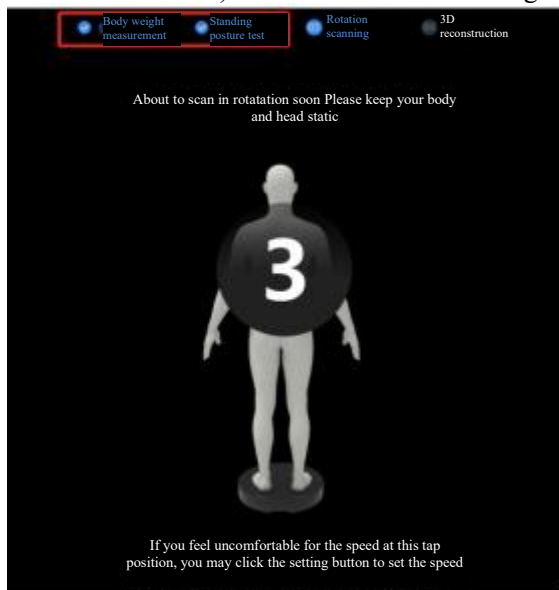
- ✧ Stand at the turntable footprints according to the interface prompts.
- ✧ Note: If you want to measure body composition data, you need to use the product barefoot.



- ✧ Standing posture test: Adjust your arms to the human-shape area, and the human-shape frame will become blue. Keep your body and head still during scanning

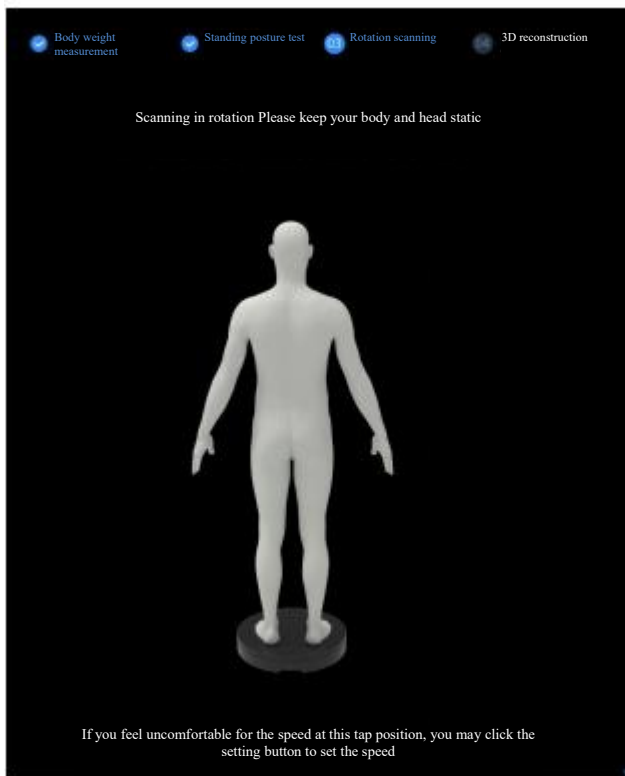


- ✧ After passing the weight measurement and standing posture test (the icon in front of the measurement item will become ). Start the rotation scanning after countdown of 3 seconds.

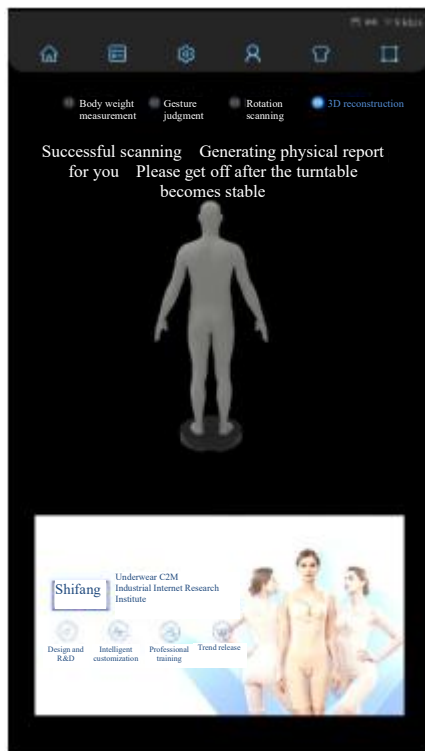


- ✧ Please keep the body and head static in the whole process of rotation

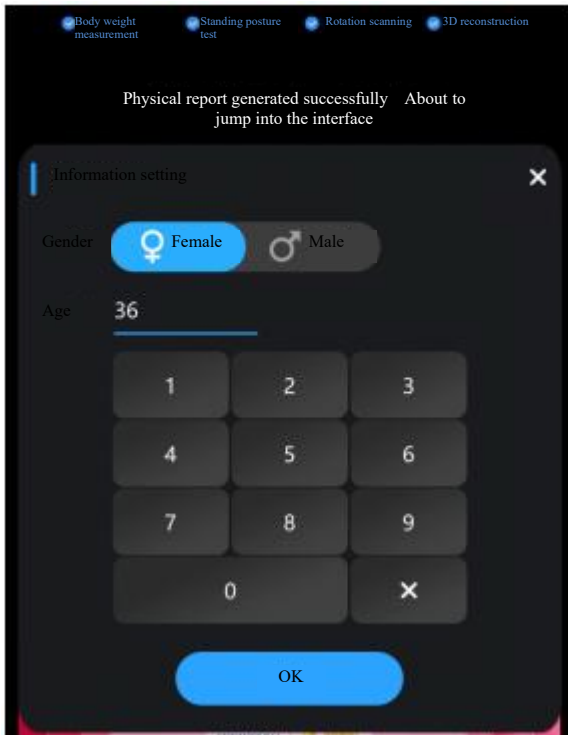




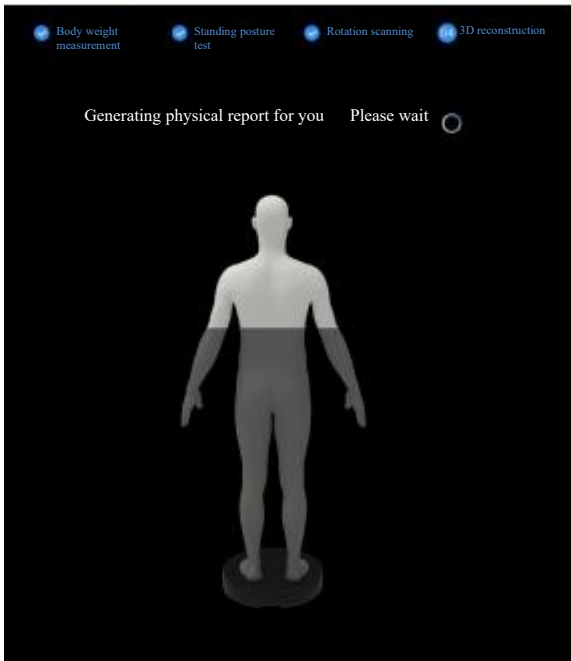
- ✧ After the rotation scanning is completed, please get off after the turntable becomes stable.
- ✧ Do not get on and off the turntable during rotation, to prevent the injury caused by falling.



- ✧ New users need to input gender and age information while old users do not need to input such information.
- ✧ Note: When the age of below 10 is inputted, there will be no body composition data.

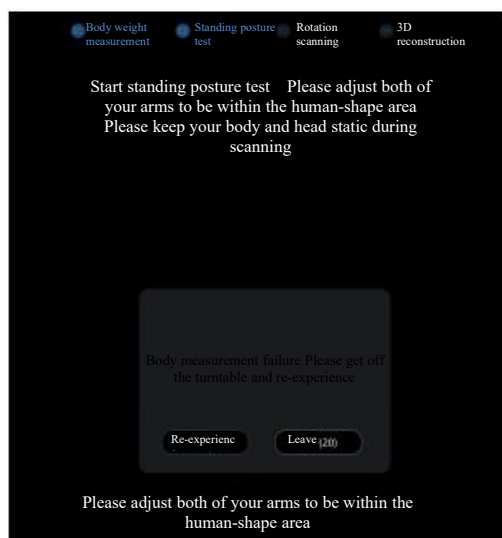


- ✧ It takes about 30 seconds to complete the reconstruction at the 3D reconstruction stage



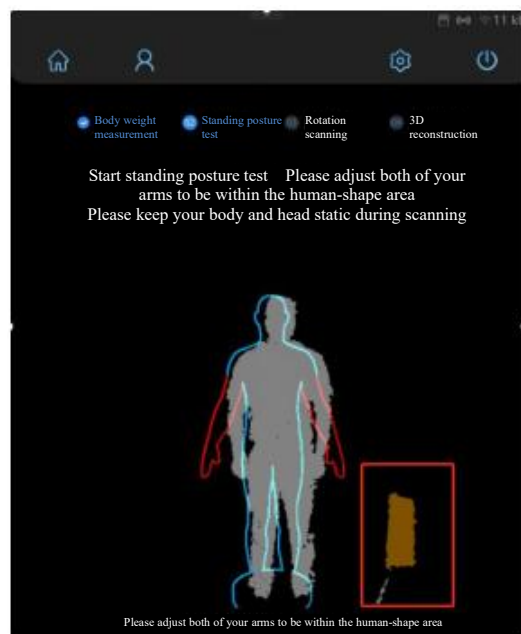
## ❖ Exception and Handling Process Flow

### ■ Body weight measurement failure



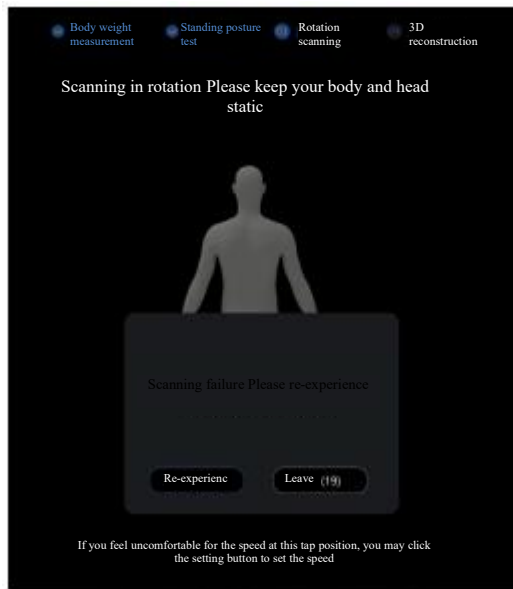
◆ Click “Re-experience”, get off the turntable and then stand on the turntable again to re-experience.

### ● Standing posture test failure



- Adjust both of your arms to be within the human-shape area and keep it for about 3 seconds.
- Make sure there are no other non-measured objects in the scanning area (yellow part as shown in the red box above).

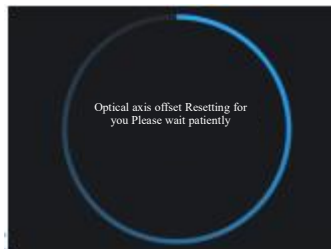
## ● Scanning failure



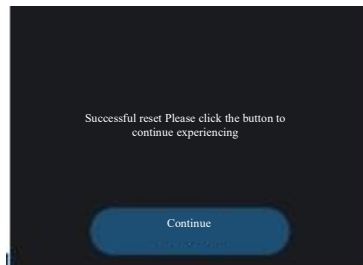
- Click “Re-experience”, get off the turntable and then stand on the turntable again to re-experience.

## ● Optical axis offset

### ■ System automatic reset



### ■ Successful reset



- Click “Continue” to continue experiencing the device.

✧ For the detailed device using specification, please read the “Precautions for Use” and “Specifications for Use” sections

## Data Display Interface

✧ In case of non-barefoot measurement, there will be no body composition data.



✧ You can obtain the body composition data through barefoot measurement (**Note: There is no body fat data for those under the age of 10**)



✧ It takes about 30 s to calculate the body measurement data. Please wait patiently.

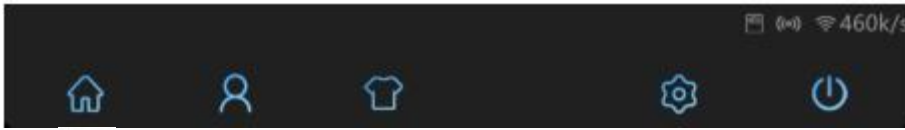


✧ The interface will automatically display the body measurement data after successful calculation.



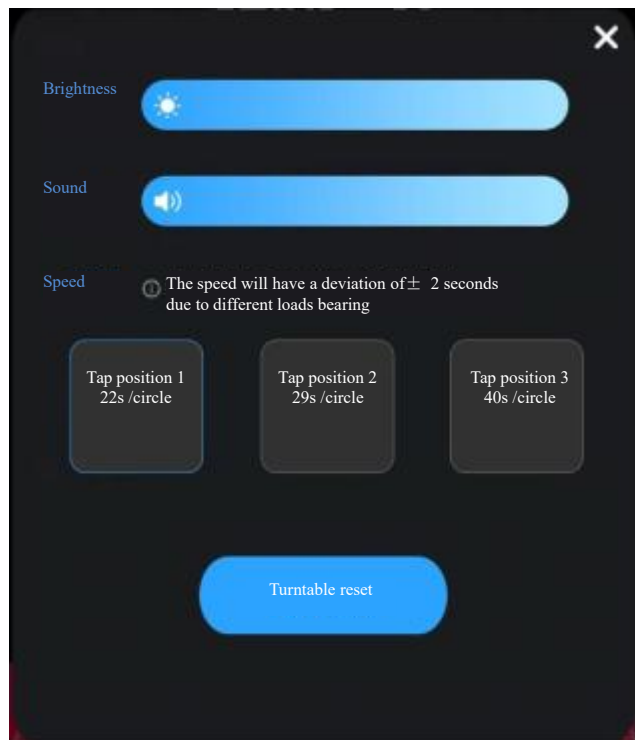
- ✧ You may scan the QR code on the screen to view more detailed body composition data and body measurement data on our WeChat official account.


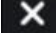
### Status Bar and Function Bar



- ✧ : Turntable connecting status
- ✧ : Sensor connecting status
- ✧ : Network status
- ✧ : Return to the welcome interface
- ✧ : System setting pop-up window button
- ✧ : Information setting pop-up window button
- ✧ : 3D clothing DIY service button
- ✧ : Power-off button

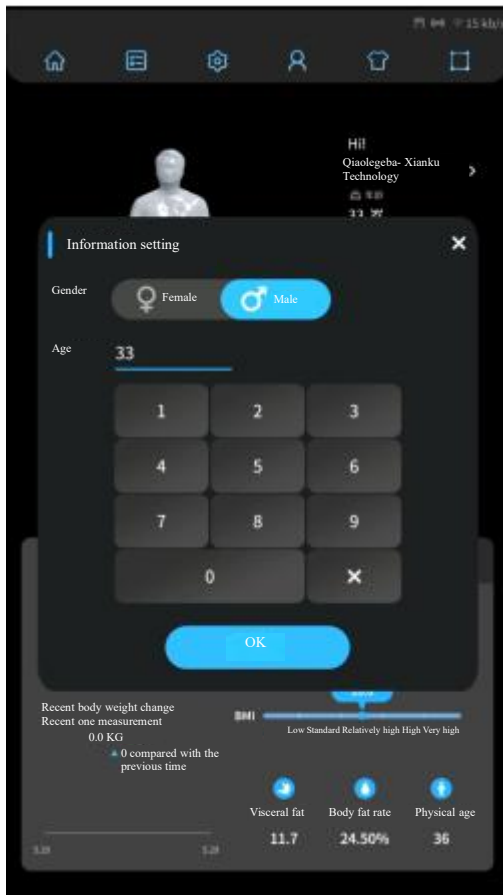
## System Setting

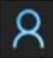



- ✧ Click the  button and a window will pop up. Click the  button to close the window.
- ✧ The system brightness, volume, turntable speed and reset turntable can be set.
- ✧ There are multiple tap positions of seed available for selection, and you can set flexibly according to the user's age group.
- ✧ If most users are the middle-aged and elderly, you may reduce the speed appropriately. Please select the tap position according to the actual conditions.
- ✧ **For the detailed use specifications, please read “Precautions for Use” section.**




## Information Setting



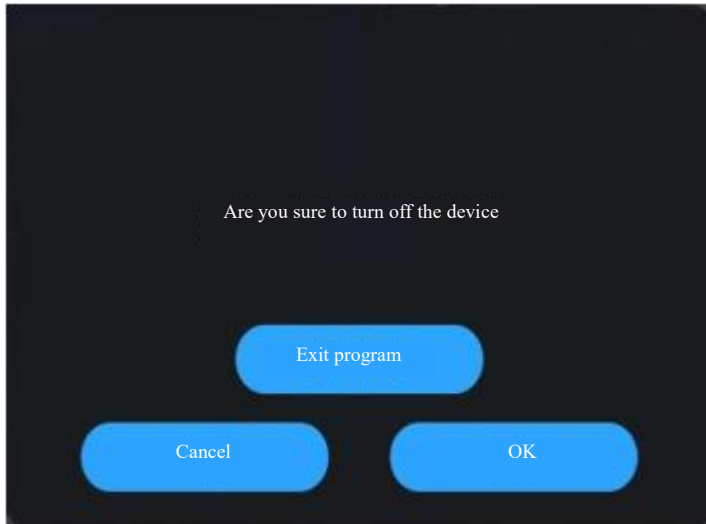
- ✧ Click  in the function bar to open the information modification pop-up window.
- ✧ You may also click  on the data interface to open it.
- ✧ **Note: In case of age of below 10, the body composition data cannot be obtained.**


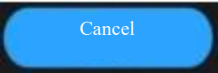


## 3D Clothing Visual Order Placing System



- ✧ Click  to open the 3D clothing visual order placing system for experiencing
- ✧ Return to the system interface. Please close the 3D clothing visual order placing system.
- ✧ **When the 3D clothing visual order placing system is used to place an order, please check whether you have logged in your own account.**

## OFF Button



- ✧ Click  to open the power-off popup window.
- ✧ Click “” to return to the interaction system, and click “” to power off the device.
- ✧ Click “” to shut down the system.
- ✧ When the device or system is shut down, please note whether it prompts that a uploading task is being performed. If so, it is recommended to shut down the device or system later, to avoid data loss.
- ✧ **Note: Please shut down the device with the OFF button. Try to avoid shutting down the device forcibly by long pressing the power-on button. Otherwise, the damage may be caused to the device.**

## FAQ

**1. Are there any other attached accessories in addition to the device main body, turntable and mat after I have received the product?**



Non-woven fabric  
Warranty card  
Power wire  
Anti-slip mat  
Mounting component



Slot type screwdriver/Cross head screwdriver (1 pc): For tightening the turntable screws  
Phillips screws (8 pcs): For the auxiliary fixing of base plate and support  
Internal hexagonal wrench (1 piece): Used for locking the hexagon socket screws during the base installation  
Internal hexagonal wrench (14 pcs): For the base assembly and base and device fixing

XIANKU 仙庫

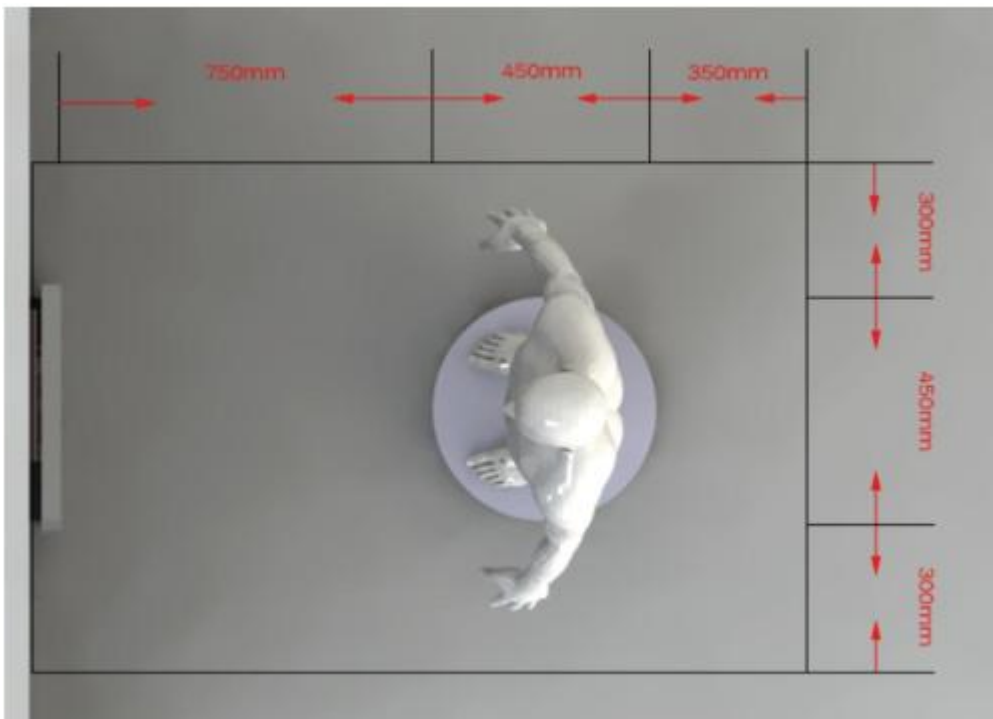
Description of device accessories

Base plate  
Wall-mounted support  
Base support



(The anti-slip mat has been installed to the base plate before delivery, and you can remove it as needed.)

**2. How large space is required for the normal use of the device?**



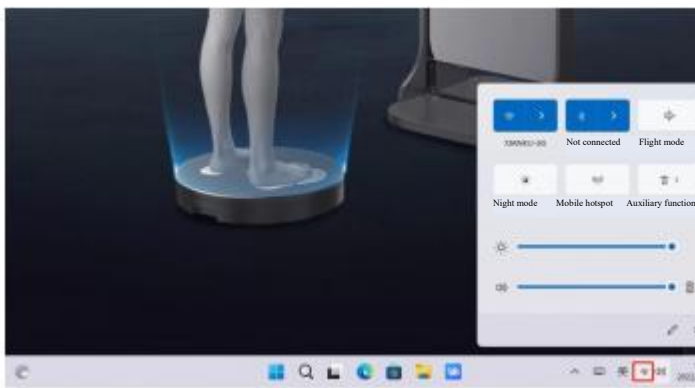
- The distance between the device and the turntable shall be at least 750mm. In case of wall mounting, the specification of the device itself shall be considered, and such distance shall be 813.5mm.

- A space of 350mm shall be reserved at the rear of the turntable and there shall be no interference in such space to ensure accurate measurement.
- The turntable shall serve as the core of a circle, and there shall be no interference in the range of 300 m when the product is used.
- A using space of 1613.5mm×1050mm shall be reserved under the condition of ensuring the stability of the device. (The minimum device space is about 1.7m<sup>2</sup>.)

### 3. What do I need to do when the device is started for the first time?

#### ● Set the network

- ✧ After entering the system, the interaction system will be started automatically
- ✧ A network needs to be set when the device is used in a new network environment. Slide upwards with a single finger along the screen bottom edge to display the taskbar
- ✧ Click the WiFi button of the taskbar, and the setting window will pop up



- ✧ Click the WiFi list arrow button



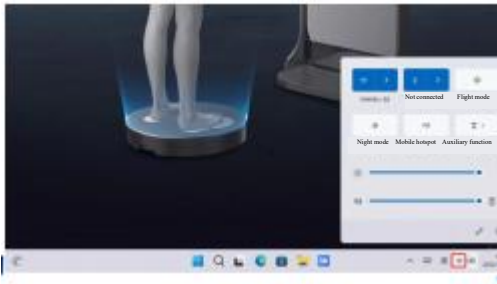
- ✧ Select the correct WiFi name, and select “Auto connect”. Click “Connect”



- ✧ Input the WiFi password through the screen keyboard. Click the “Enter” button to start connecting



- ✧ After the connection is successful, click the WiFi button on the taskbar again to close the WiFi window. So far, the WiFi setting is completed.



#### 4. How to return to the system desktop?

Touch the screen with three fingers, and slide downwards at the same time to return to the system desktop.

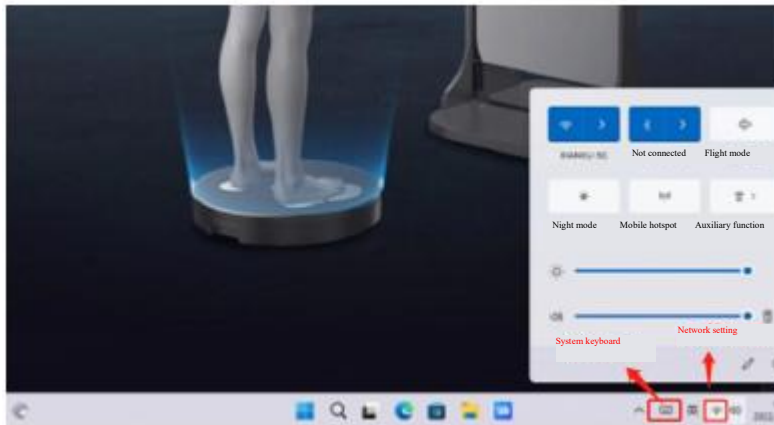
#### 5. How is the taskbar displayed and hided?

- Display: Slide upwards with the single finger along the screen bottom edge
- Hide: Click the taskbar to hide it.



## 6. How to use the system keyboard?

- Use the system keyboard: Click the keyboard icon on the taskbar



## 7. What if I delete the system files carelessly, causing the device unavailable for use?

The device provides the one-key recovery setting function

### 3. The device cannot normally enter the system:

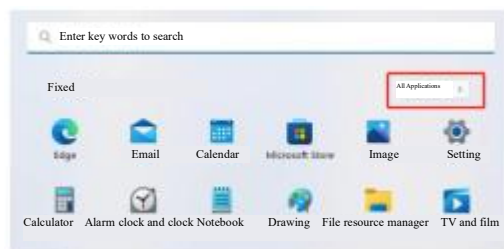
Connect an external USB keyboard, press and hold the keyboard F9 key and then press the power button to power on the device. Then, you can enter the one key recovery interface.

### 4. The device can be normally powered on to enter the system desktop:

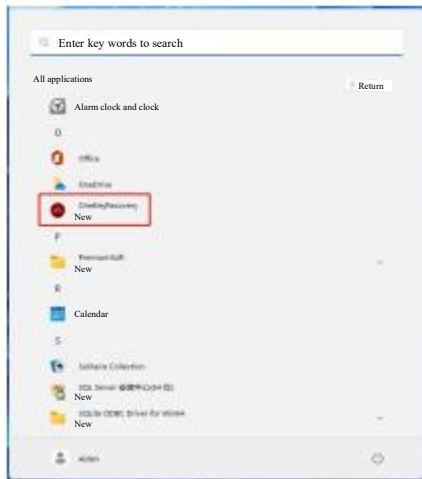
- Click the “Start” button on the taskbar



- Click “All Applications”



- Find the OneKeyRecovery icon in the application list, and click the icon to open the system recovery program



I. Click the “Recovery OS” button



m. The device will be powered on automatically to enter the Recovery interface



n. Click the “Factory Reset” button to start recovering the system.

o. Please wait patiently and do not turn off the device during the system recovery.

p. Click the “Exit” button to return to the system.

8. Is the infrared laser of the body sensor camera harmful to human body?

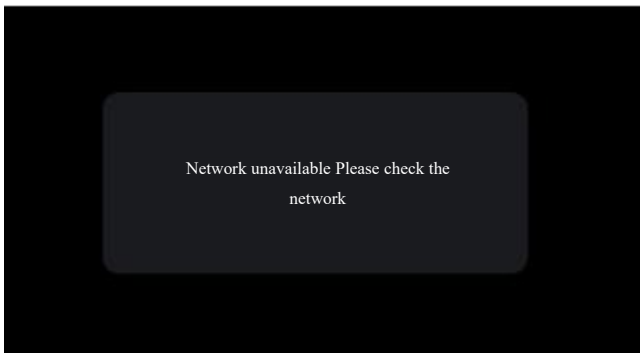
✧ Our infrared depth camera complies with the national class 1 laser requirements and is safe.

9. Will the 3D body measurement mirror expose my body information, my naked model?

✧ The 3D smart depth camera only acquires the depth information rather than the color information. The user's facial features are blurred, and it is impossible to identify the real person according to the depth model.

**10. What shall I do if the interaction terminal system prompts network failure?**





- ✧ A stable network connection is required for the measurement of the body measurement mirror. Please ensure that the device is connected to the network.

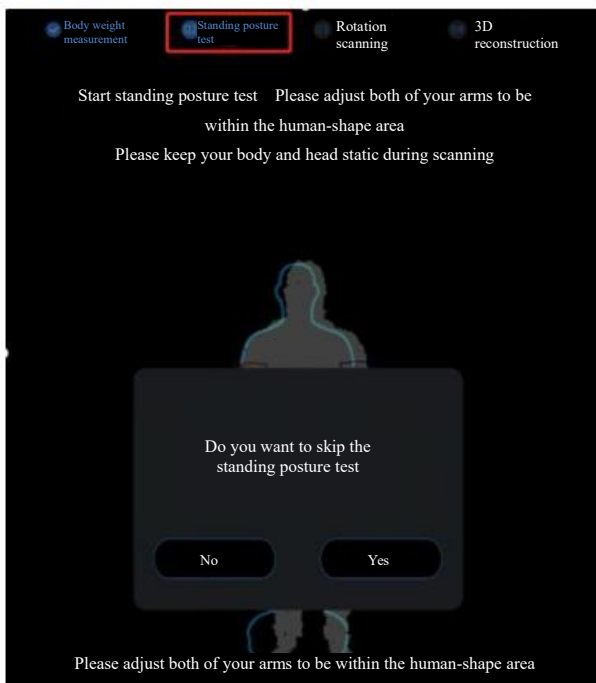
#### 11. What should I do if the body weight measurement is abnormal?

**Precautions for starting the device:** Please do not stand on the turntable when starting the device. At this time, the turntable needs to be powered on and reset to zero. If the turntable bears weight when it is powered on, it will fail to return to zero, resulting in inaccurate weight measurement.

**For other precautions, please read the Specifications for Use of the turntable. If they are not listed in the specifications, please contact the after-sales service personnel.**

#### 12. What should I do if I fail to pass the standing posture test due to wearing fluffy clothes or other reasons?

- ✧ For your better measurement experience, we recommend wearing close fitting clothes during use. If the standing posture test still fails, you may click the red box area below to skip the standing posture test.
- ✧ Please read the Body Measurement Specification for other precautions. If not listed in the specification, please contact the after-sales service personnel.



#### 13. Why does the model look abnormal

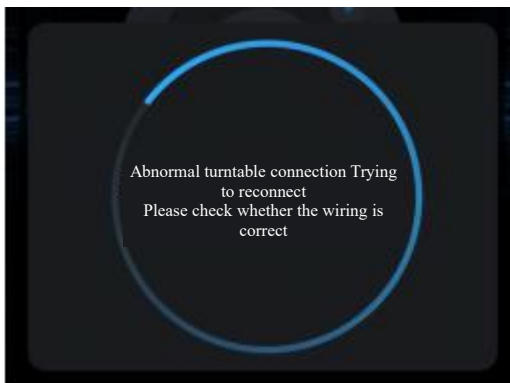
- ✧ The reason why the model is abnormal is that the experimenter moves in the process of rotation. For a better model effect, please keep your body and head still throughout the whole process.

**For other precautions, please read the Body Measurement Specification. If not listed in the specification, please contact the after-sales personnel.**

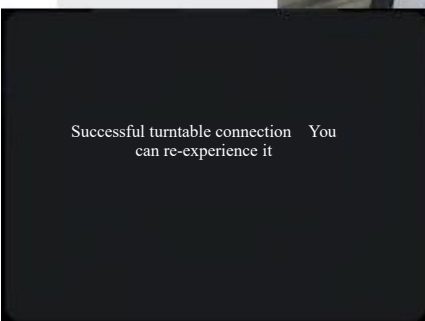
#### 14. Why does the wrist of the model look smaller

- ✧ The wrist of the model looks smaller, mostly because the experimenter wears black smooth-surface ornaments such as black watch. It is recommended to remove the black smooth-surface ornaments during use. Pay attention to take care of your belongings removed.
- ✧ For other precautions, please read the Body Measurement Specification section. If not listed in the specification, please contact our after-sales personnel.

#### 15. What should I do if it prompts abnormal connection of turntable during use?



- ✧ The turntable connection is abnormal, mostly because the turntable data cable connection is loose. Please check the cable connection.



- ✧ After the cable is re-connected tightly, the system will prompt successful turntable connection
- ✧ **Note: Please tighten the attached screws on the data cable with the screwdriver**

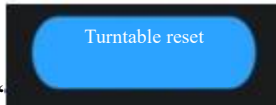
#### 16. What should I do if the abnormal sound of turntable is caused by the user's illegal operations such as getting on and off the turntable during rotation?

- ✧ Do not panic when the turntable is caused to stop operating and emit abnormal sound due to the user's illegal

operations such as getting on and off the turntable during rotation. This is the response made by the turntable due to the illegal operations for protecting the device



- ✧ You only need to click in the event of circumstances above

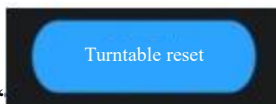


- ✧ Click “”
- ✧ At this point, the abnormal sound will stop, and the turntable will rotate to the origin.
- ✧ After the turntable rotates to the origin, you can use it normally.
- ✧ **Do not get on and off the turntable during rotation.**

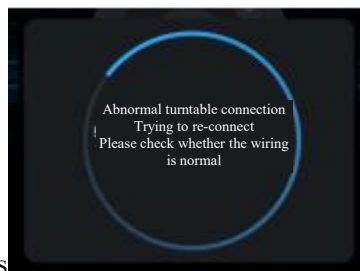
#### 17. What should I do if the turntable stops rotating due to sudden power failure or connection problem during rotation and fails to return to the original position?



- ✧ Click



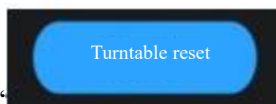
- ✧ Click “”



- ✧ At this point, the system prompts



- ✧ Re-connect the turntable data cable tightly until the green indicator light is on




- ✧ Re-click“” and wait until the turntable rotates by one circle
- ✧ **Do not get on and off the turntable during rotation.**
- ✧ **Note: Please tighten the screws attached with the data cable with the screwdriver before use.**

#### 18. Why does it take so long to collect my body measurement data

- ✧ **The calculation speed of body measurement data depends on two points**
  - Is the current network environment good
  - Is the model quality good? If you move during measurement or wear non-close fitting clothes, the calculation time may be extended or the calculation may fail

## 19. What should I do if the system shows that the body composition data is being calculated during barefoot measurement?

Click  to open the information setting page. Set the gender and age. Click the “OK” button to recalculate



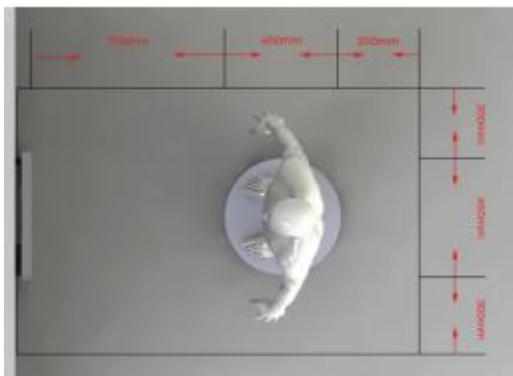
the body composition data.

## 20. What should I do if the system indicates body weight measurement failure?

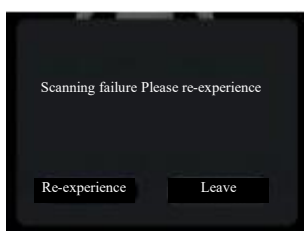


- ✧ Click “Re-experience”
- ✧ Guide the customer to re-stand on the turntable, and stand straightly and still

## 21. What should I do if the system prompts scanning failure?



- ✧ Check whether non-measurement personnel enter the area indicated by the figure above.



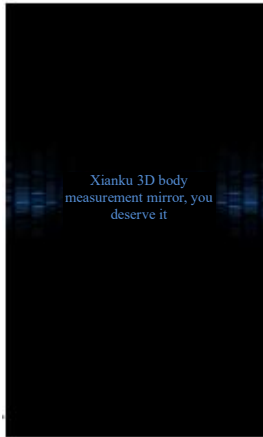
- ✧ Click to re-experience
- ✧ Guide the customer to stand still during rotation.

## 22. What should I do if the body weight measurement always fails?

- ✧ Try to re-connect the turntable data cable
- ✧ When the interface prompts “please stand at the footprints of the turntable”, stand on the turntable again for measurement

**23. What should I provide when the device provides power-on file customization, program home page interface screensaver customization, log-in page and banner customization at the bottom of scanning page?**

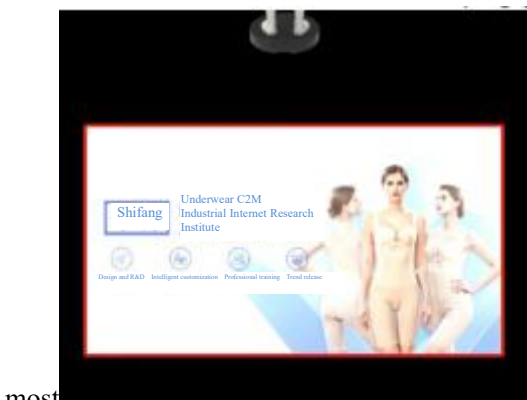
- ✧ Customize the power-on file, and provide the files to be displayed to our working staff



- ✧ For the program home page interface screen customization, please provide our working staff with the image in the format of png/jpg with the resolution of 1080\*1920. Three-image carousel is supported at most



- ✧ For the banner customization of log-in page and scanning page, please provide our working staff with the image in the format of png/jpg with the resolution of 946\*500. Three-image carousel is supported at



most

---

**Letter of Commitment for Three Guarantees of the Product**

The commitment is only applicable to the regular products purchased from us and our authorized agents and dealers through legal means in the People's Republic of China.

We provide after-sales service for our products in strict accordance with the *Consumer Protection Law of the People's Republic of China*, the *Product Quality Law of the People's Republic of China* and other regulations formulated by relevant industries.

**Three-Guarantee Period**

The warranty period for the whole device is 1 year.

**Commitment for Three-Guarantee Service**

The consumer can handle the three-guarantee certificate with the invoice and three-guarantee vouchers. The validity period of three guarantees shall be calculated as of the invoice issuing date, and the time occupied for repair and time waiting for repair due to lack of parts shall be deducted.

1. In case of performance fault within 7 days from the date of sale, the consumer can choose to return, exchange or repair the product.

1. In case of performance fault within 15 days from the date of sale, the consumer can choose to exchange or repair the product.

3. In case the product cannot be used normally after being repaired twice within one year, the seller shall replace the product with the same model and specification free of charge or the customer may return the product according to relevant regulations based on the repair records and certificates provided by the repair personnel.

The depreciation expense shall be calculated from the date of issuance of the invoice to the date of return, and the time occupied for repair and the time waiting for repair shall be deducted. In case the damage is caused by improper use, maintenance and storage by the consumer, the damage is caused by disassembly by a person who is not the repairer undertaking the three-guarantee repair, there are no three-guarantee vouchers and valid invoices, the model and specification of the three-guarantee voucher is not consistent with that of the repaired product or the three-guarantee voucher is altered, or the damage is caused by force majeure factors, three guarantees will be implemented, and the charged repair will be performed.

Please note that the following circumstances are not within the range of three guarantees:

The three-guarantee validity period of one year is exceeded.

The damage is caused by the use and maintenance in violation of the requirements in the *Product Specification*.

The product is repaired by the unauthorized maintenance personnel and manufacturer without permission.

Artificial damage occurs, including but not limited to short circuit caused by water ingress into the product, and damage caused by violent use of hard objects.

The damage is caused by force majeure factors, such as earthquake.

It cannot be verified that such product is purchased from regular channels because there is no purchase invoice, three-guarantee voucher, the three-guarantee voucher is altered, and the model on the voucher is not consistent with the actual product.

The purchased product has a fault due to the product quality under the normal using conditions.

---

**Executive Standards and Reliability Test Items of the Device**

---

**Executive standards**

Such series of XK-H003 shall comply with the following standards:

**Quality related standards:** GB/T 2828.1-2012 Sampling procedures for inspection by attributes- Part 1: Sampling schemes indexed by acceptance quality limit ( AQL) for lot-by-lot inspection

GB4943.1-2011 Information technology equipment- Safety- Part 1: General Requirements

GB/T9254.1-2021 Information technology equipment, multimedia equipment and receivers- Electromagnetic compatibility- Part 1: Emission requirements

Announcement [2014] No.1 of Ministry of Industry and Information Technology for radio products

**Device related standards:** Product features of GB4706.1 Household and similar electrical appliances- Safety- Part 1: General requirements; GB4343 Limits and methods of measurement of radio disturbance characteristics of electrical motor-operated and thermal appliances for household and similar purposes, electric tools and similar electric apparatus; GB 17625.1 Electromagnetic compatibility- Limits- Limits for harmonic current emissions.

## Statement

Xianku • 3D smart body measurement mirror is a high-precision smart device. The product pictures and screen contents above are only for illustration. The effect of physical products (including but not limited to appearance, color and size) and screen display contents (including but not limited to background, UI and illustration) may be slightly different. Please refer to the physical product.

The values above are theoretical values and are all from the laboratory of Shenzhen Xianku Intelligent Co., Ltd. Such values are obtained in the specific test environment. In actual use, they may be slightly different due to individual differences of products, software versions, use conditions and environmental factors. Please refer to the actual use.

Due to the real-time changes of product batch and production supply factors, in order to provide the accurate product information, specification parameters and product characteristics as far as possible, Shenzhen Xianku Intelligent Co., Ltd. may adjust and revise the text expression, picture effect and other contents above in real time, so as to match the actual product performance, specification, indexes, parts and other information.

If the above modifications and adjustments need to be made indeed, no special notice will be given.

## FCC STATEMENT:

This device complies with part 15 of the FCC Rules. Operation is subject to the following two conditions:

(1) This device may not cause harmful interference, and (2) this device must accept any interference received, including interference that may cause undesired operation.

Any Changes or modifications not expressly approved by the party responsible for compliance could void the user's authority to operate the equipment.

**Note:** This equipment has been tested and found to comply with the limits for a Class B digital device, pursuant to part 15 of the FCC Rules. These limits are designed to provide reasonable protection against harmful interference in a residential installation. This equipment generates uses and can radiate radio frequency energy and, if not installed and used in accordance with the instructions, may cause harmful interference to radio communications. However, there is no guarantee that interference will not occur in a particular installation. If this equipment does cause harmful interference to radio or television reception, which can be determined by turning the equipment off and on, the user is encouraged to try to correct the interference by one or more of the following measures:

- Reorient or relocate the receiving antenna.
- Increase the separation between the equipment and receiver.
- Connect the equipment into an outlet on a circuit different from that to which the receiver is connected.
- Consult the dealer or an experienced radio/TV technician for help.

This equipment complies with FCC radiation exposure limits set forth for an uncontrolled environment.

This equipment should be installed and operated with minimum distance 20cm between the radiator & your body